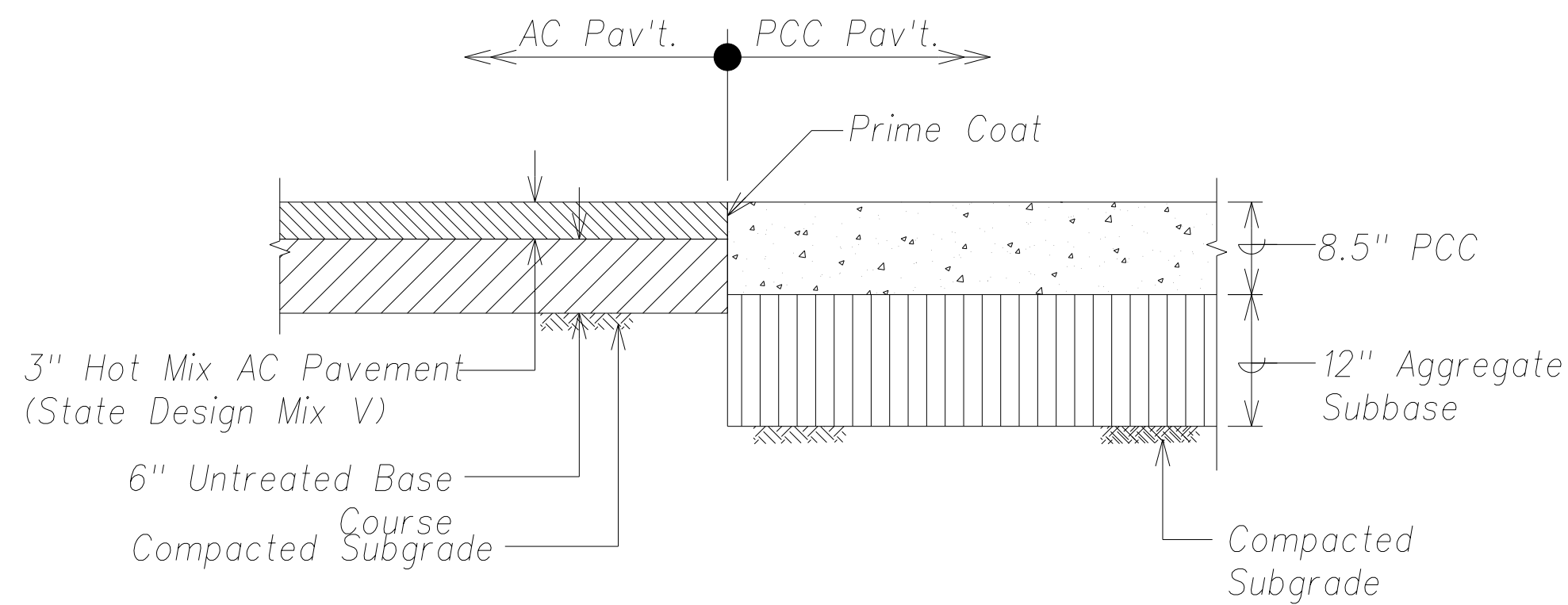
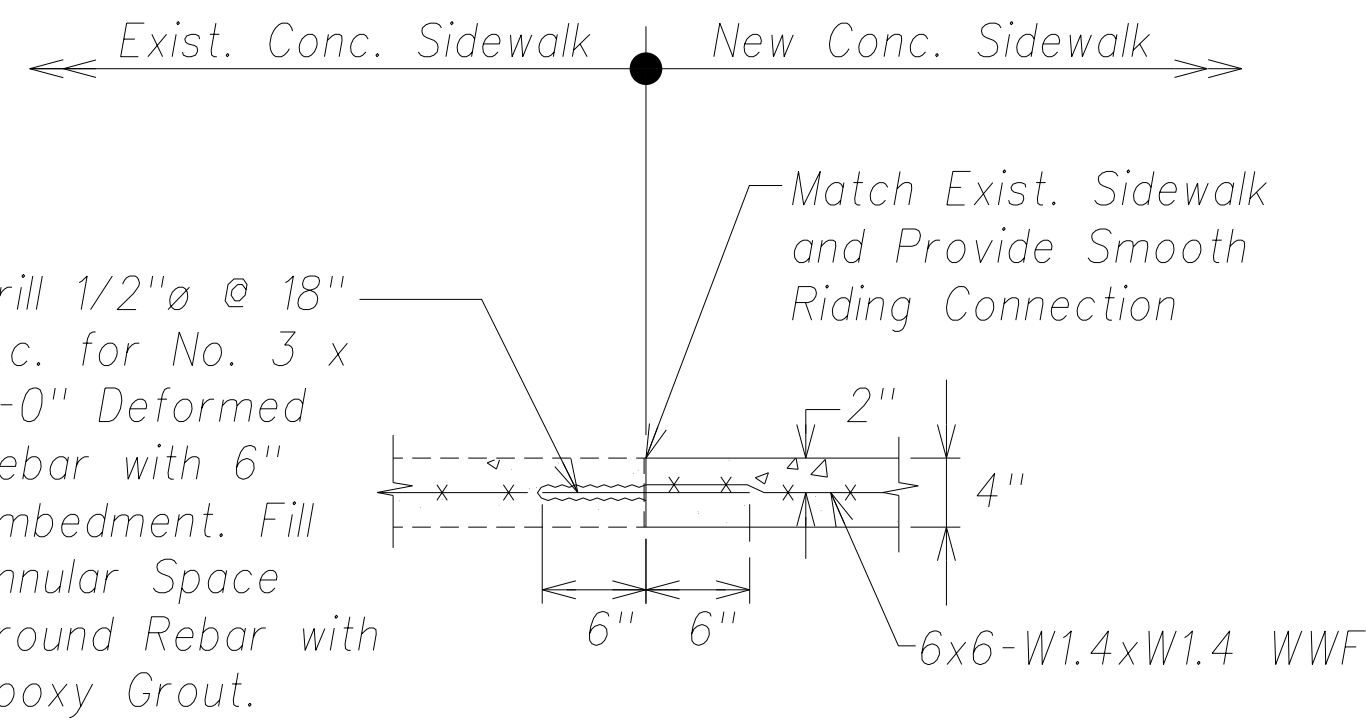


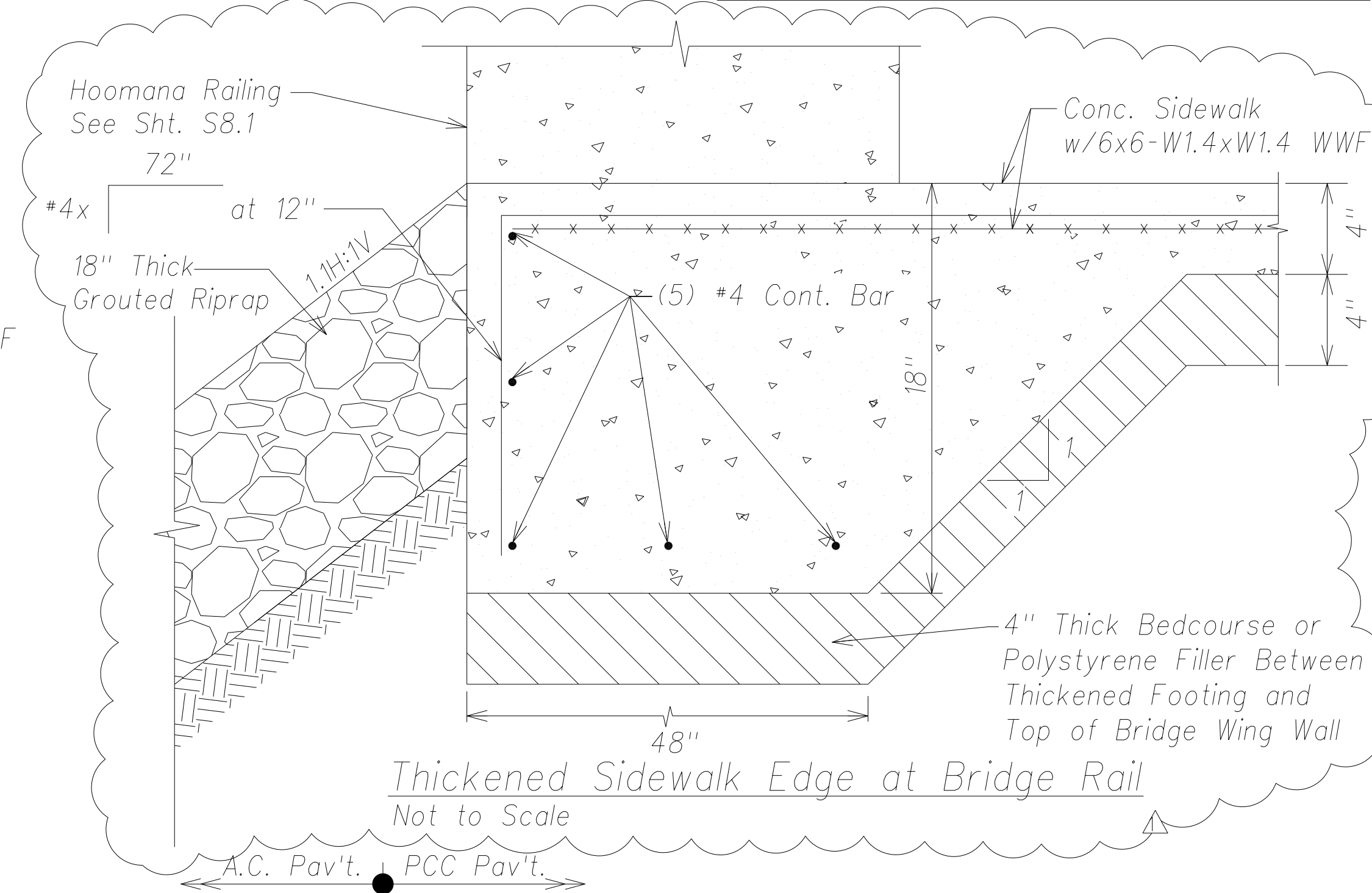
FED. ROAD DIST. NO.	STATE	FED. AID PROJ. NO.	FISCAL YEAR	SHEET NO.	TOTAL SHEETS
HAWAII	HAW.	ARR-050-1(036)	FY13/14	Model	131



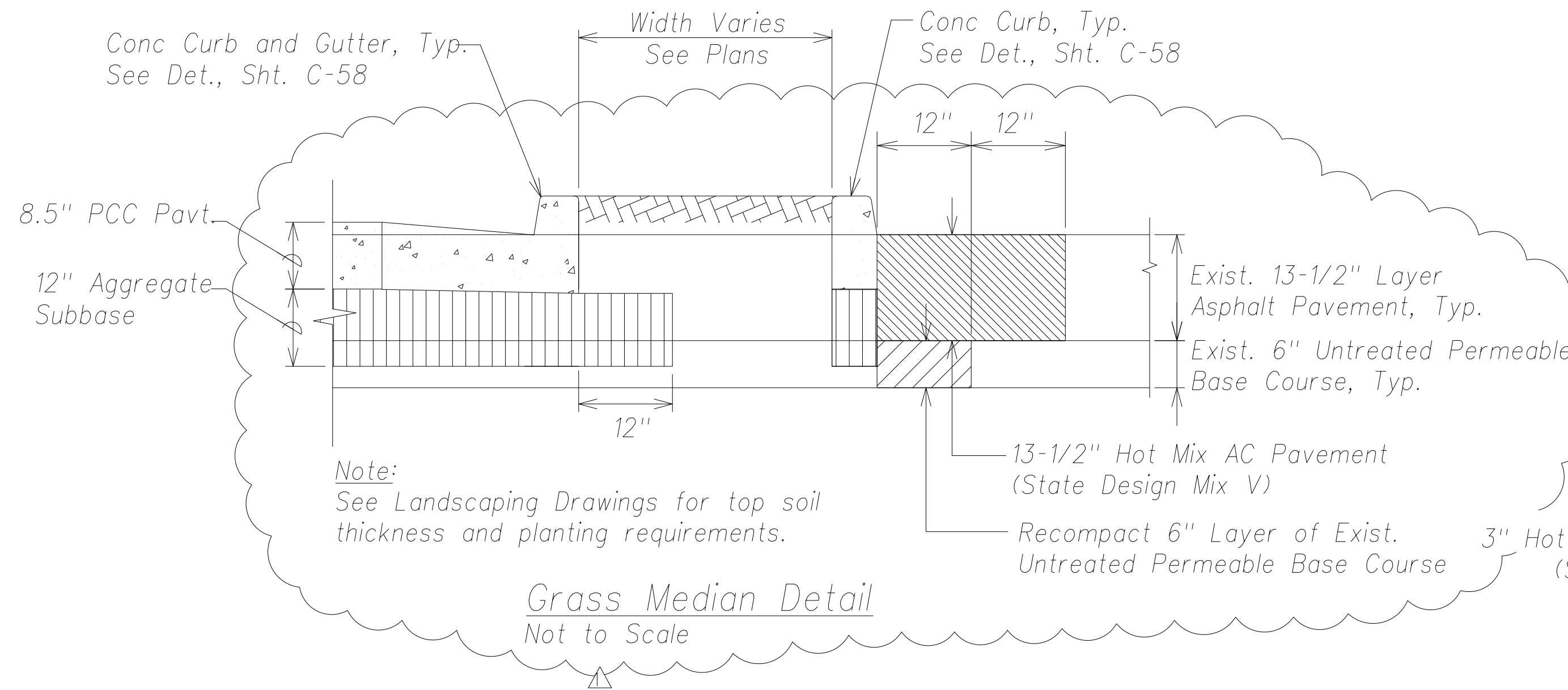
PCC-AC Shoulder Transition Detail
Not To Scale



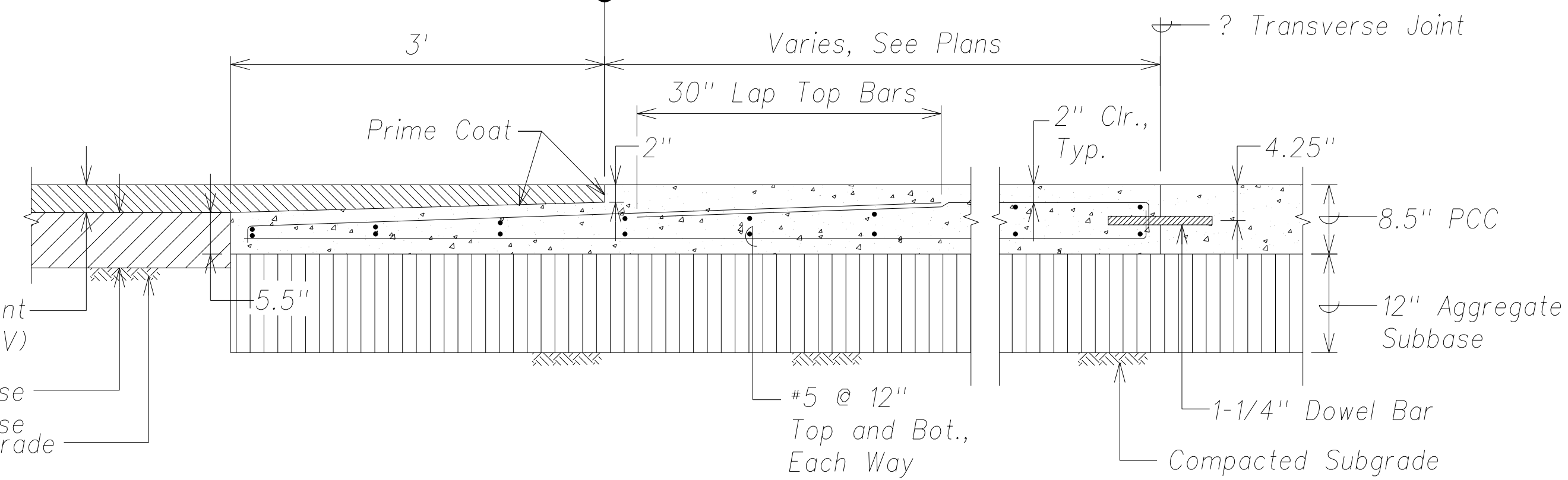
Typical Sidewalk Connection Detail
Not to Scale



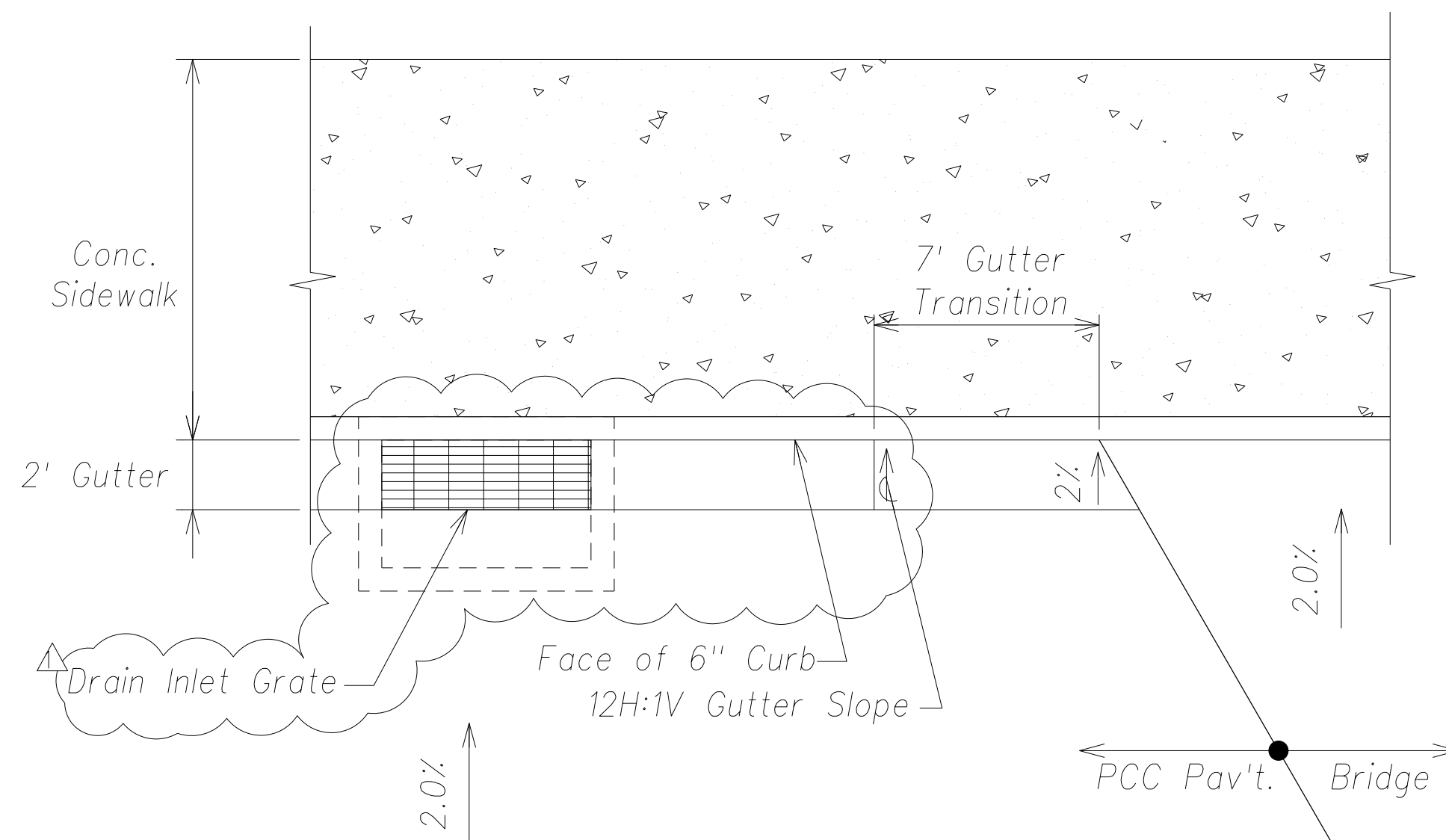
Thickened Sidewalk Edge at Bridge Rail
Not to Scale



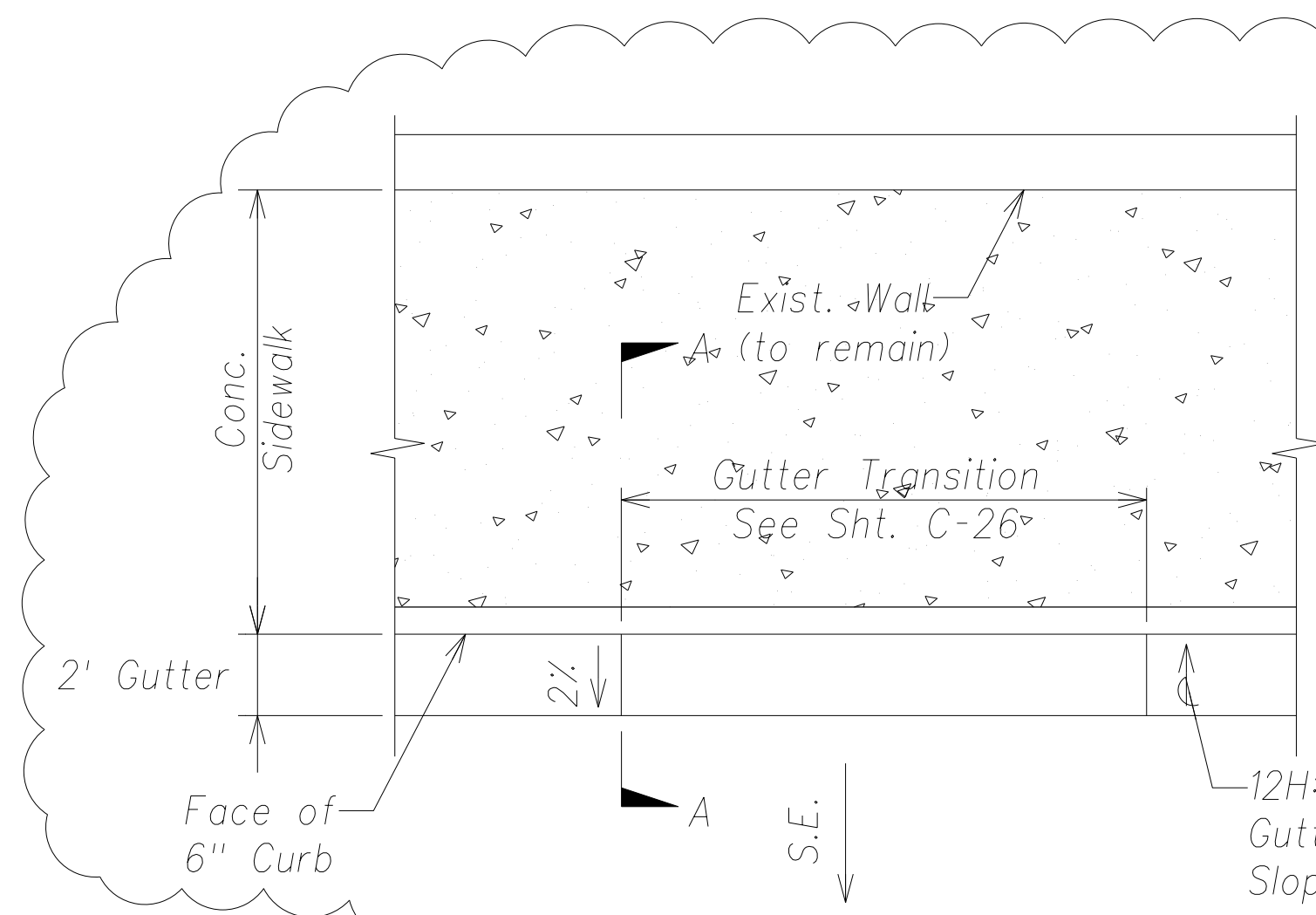
Grass Median Detail
Not to Scale



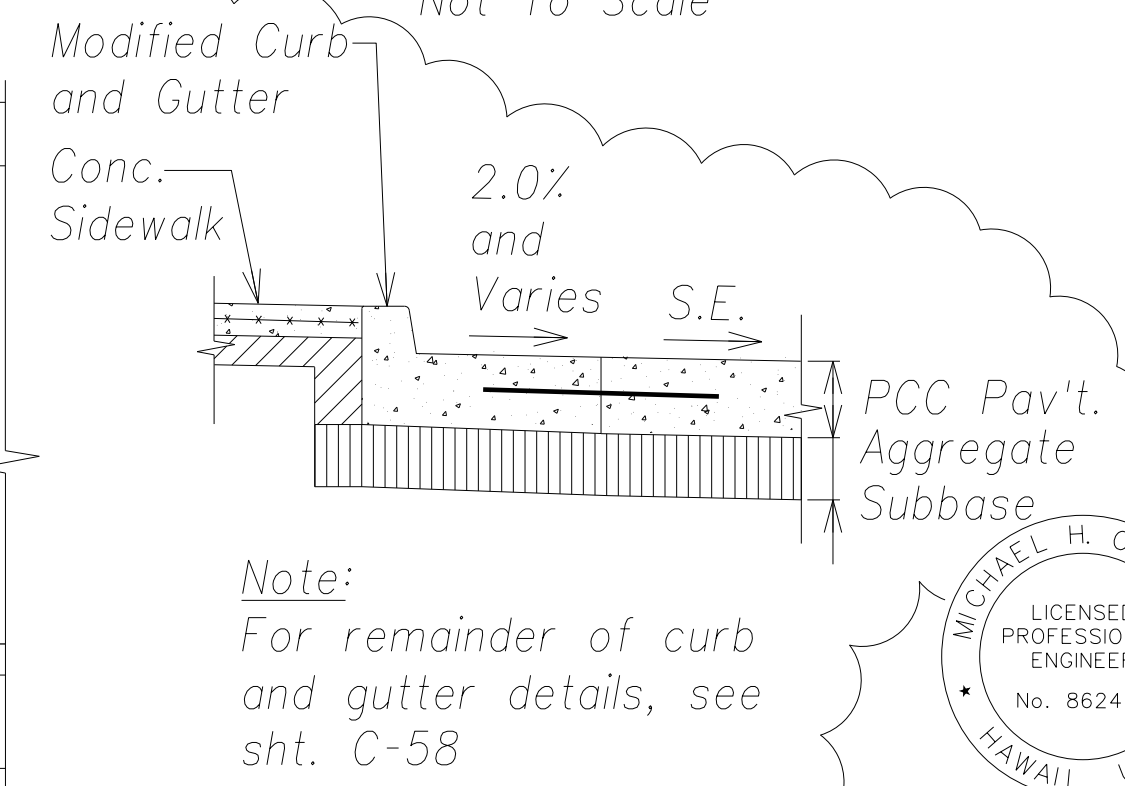
PCC-A.C. Travelway Transition Detail
Not To Scale



Gutter Transition Detail "A"
Not to Scale

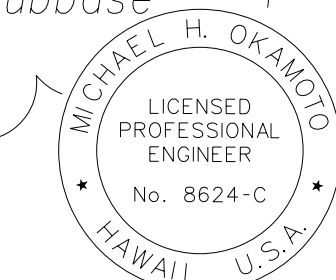


Gutter Transition Detail "B"
Not to Scale



Note:
For remainder of curb
and gutter details, see
sht. C-58

Section A-A
Not to Scale



THIS WORK WAS PREPARED BY ME
OR UNDER MY SUPERVISION AND
CONSTRUCTION OF THIS PROJECT
WILL BE UNDER MY OBSERVATION.

Signature
April 30, 2016
Expiration Date of the License

07/30/14	Revise grass median, gutter, and sidewalk detail.
Date	Revision
STATE OF HAWAII DEPARTMENT OF TRANSPORTATION HIGHWAYS DIVISION	
ROADWAY DETAILS	
PHASE 1 - KAUMUALII HIGHWAY LIHUE MILL BRIDGE TO RICE STREET	
PHASE 2 - NAWILIWILI STREAM BRIDGE AND MAUKA WIDENING	
Scale: As Shown	Date: March 25, 2013

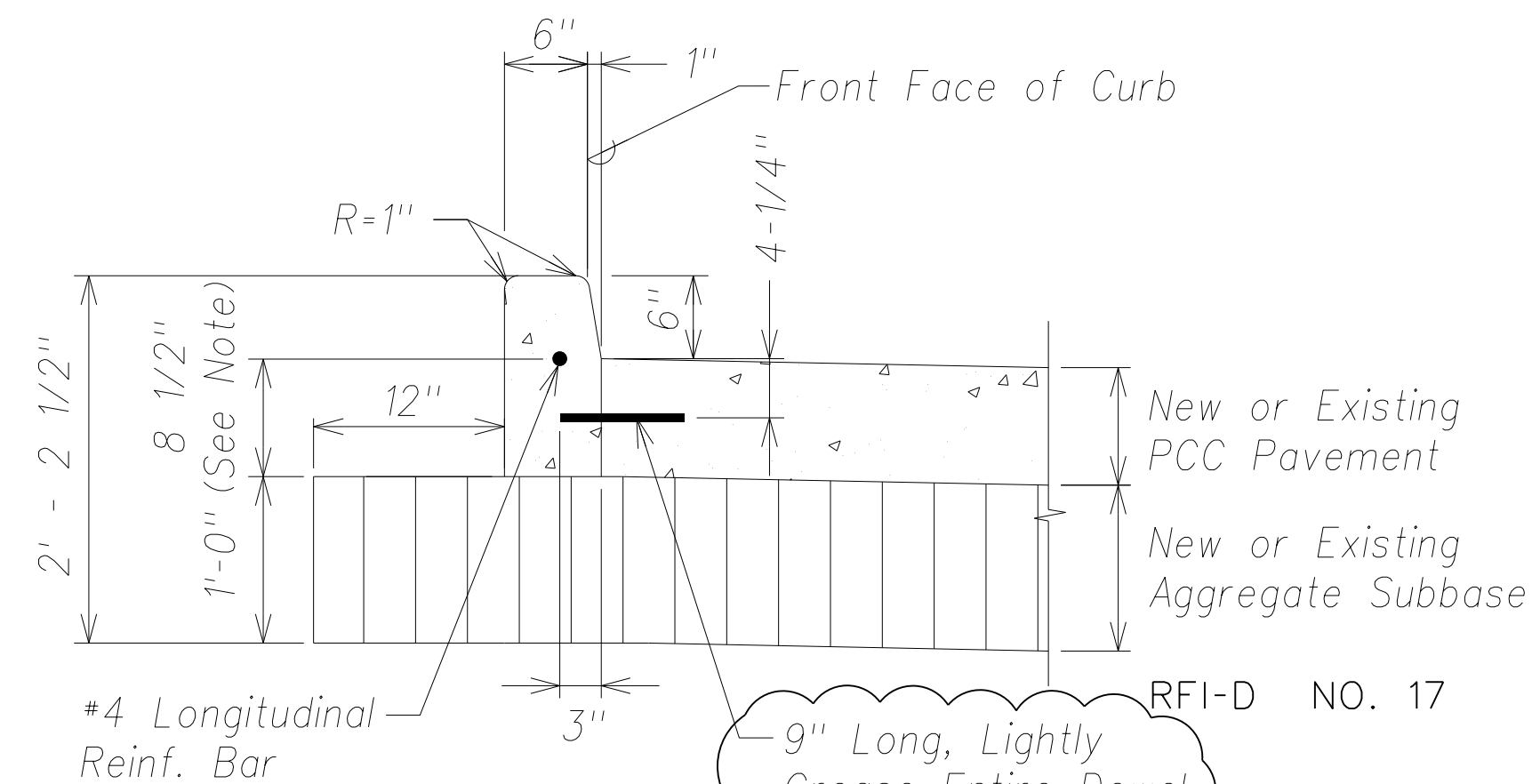
SHEET No. C-57 OF 84 SHEETS

SURVEY PLOTTED BY	DATE
DRAWN BY	
DESIGNED BY	
QUANTITIES BY	
CHECKED BY	
ORIGINAL PLAN	
NOTE BOOK	
No.	

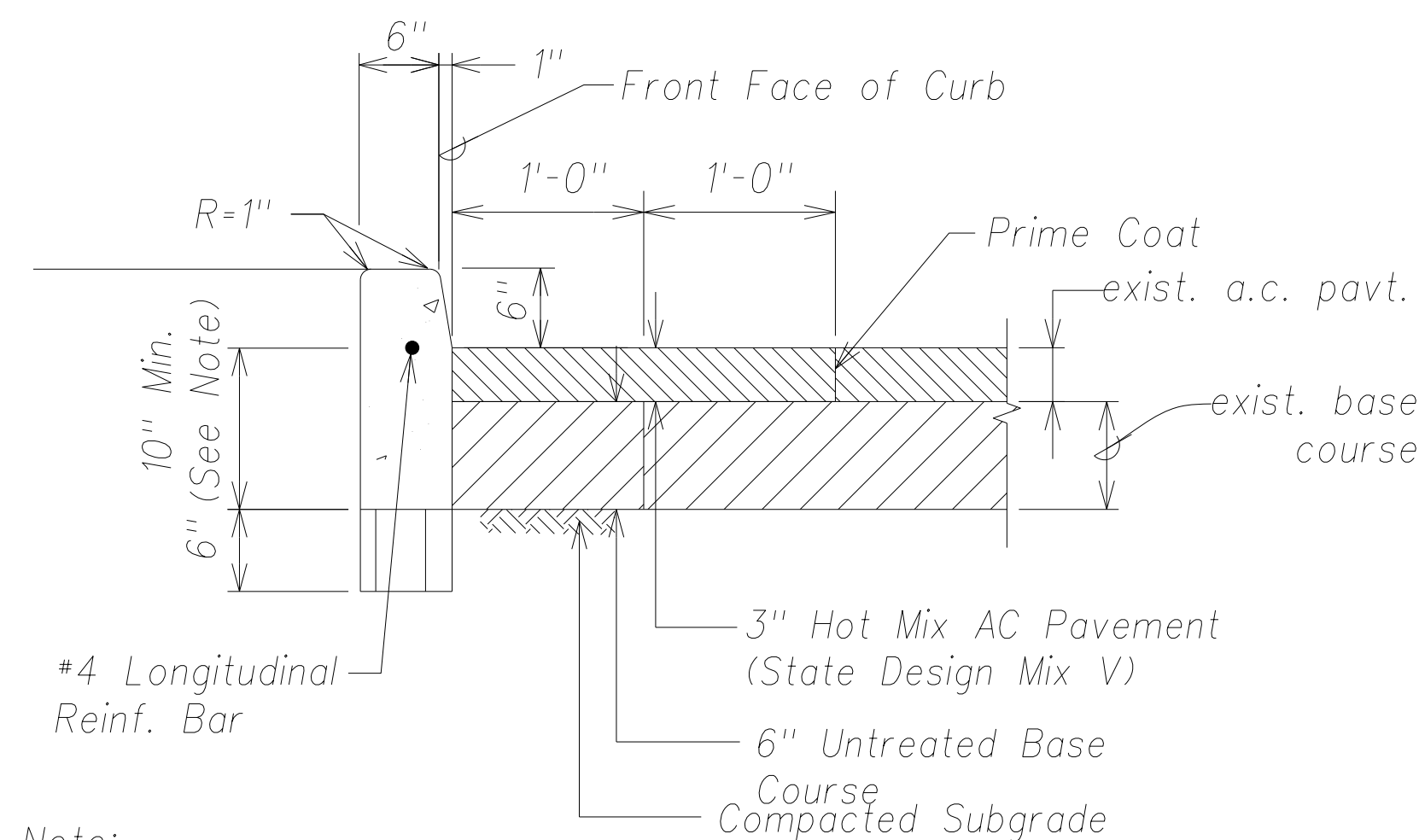
"AS-BUILT"

C. Model S1

FED. ROAD DIST. NO.	STATE	FED. AID PROJ. NO.	FISCAL YEAR	SHEET NO.	TOTAL SHEETS
HAWAII	HAW.	ARR-050-1(036)	FY13/14	Model	131



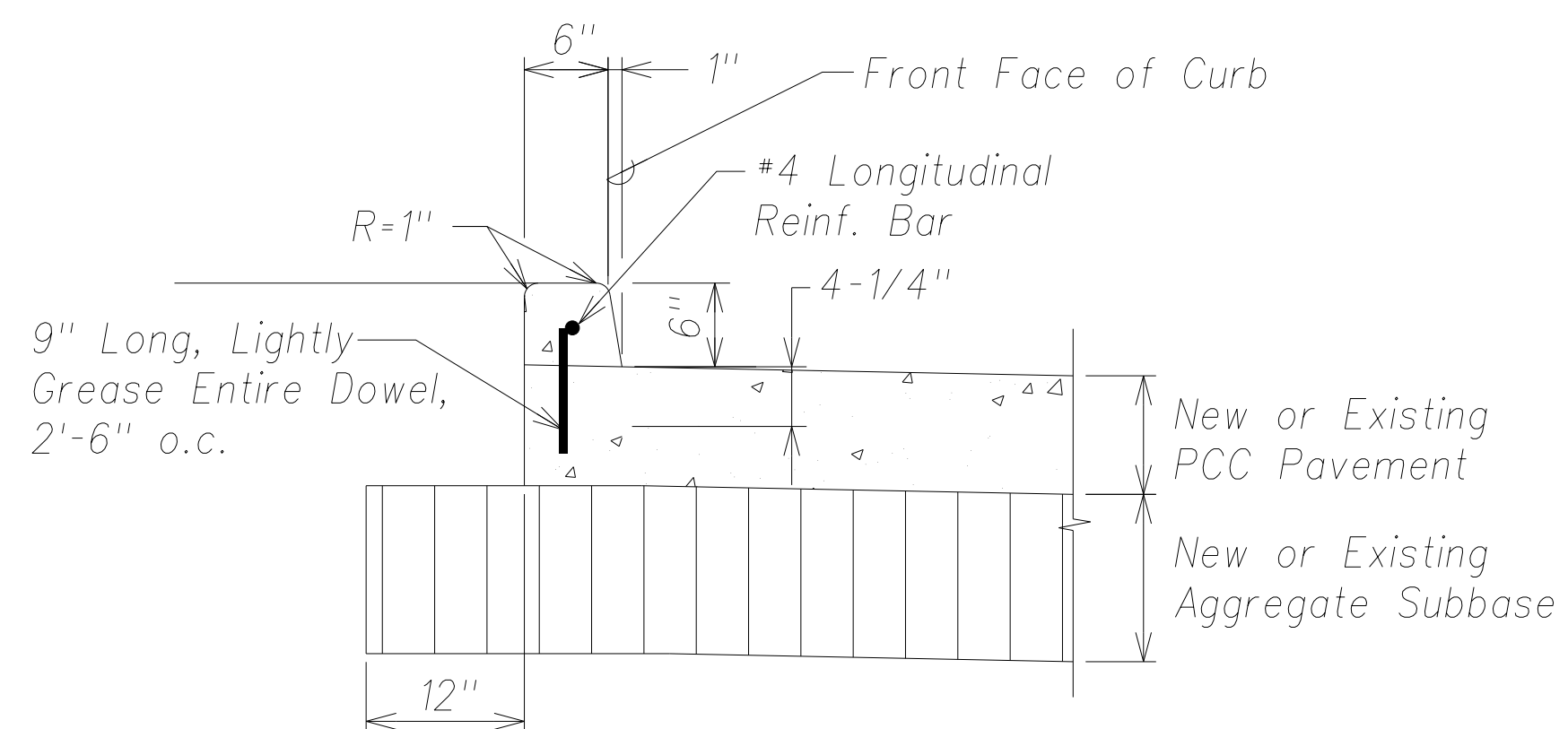
Concrete Curb Against New or
Existing PCC Pavement
Not to Scale



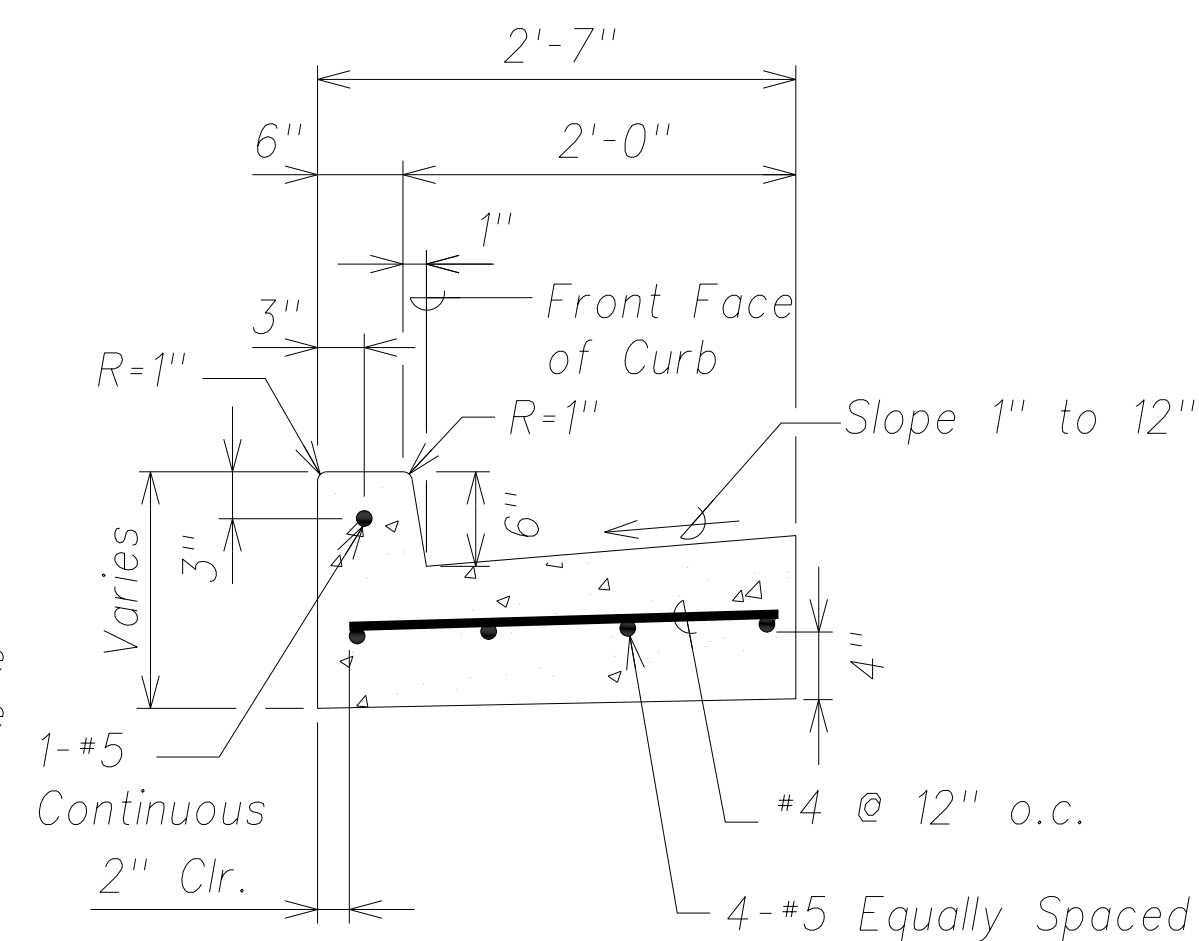
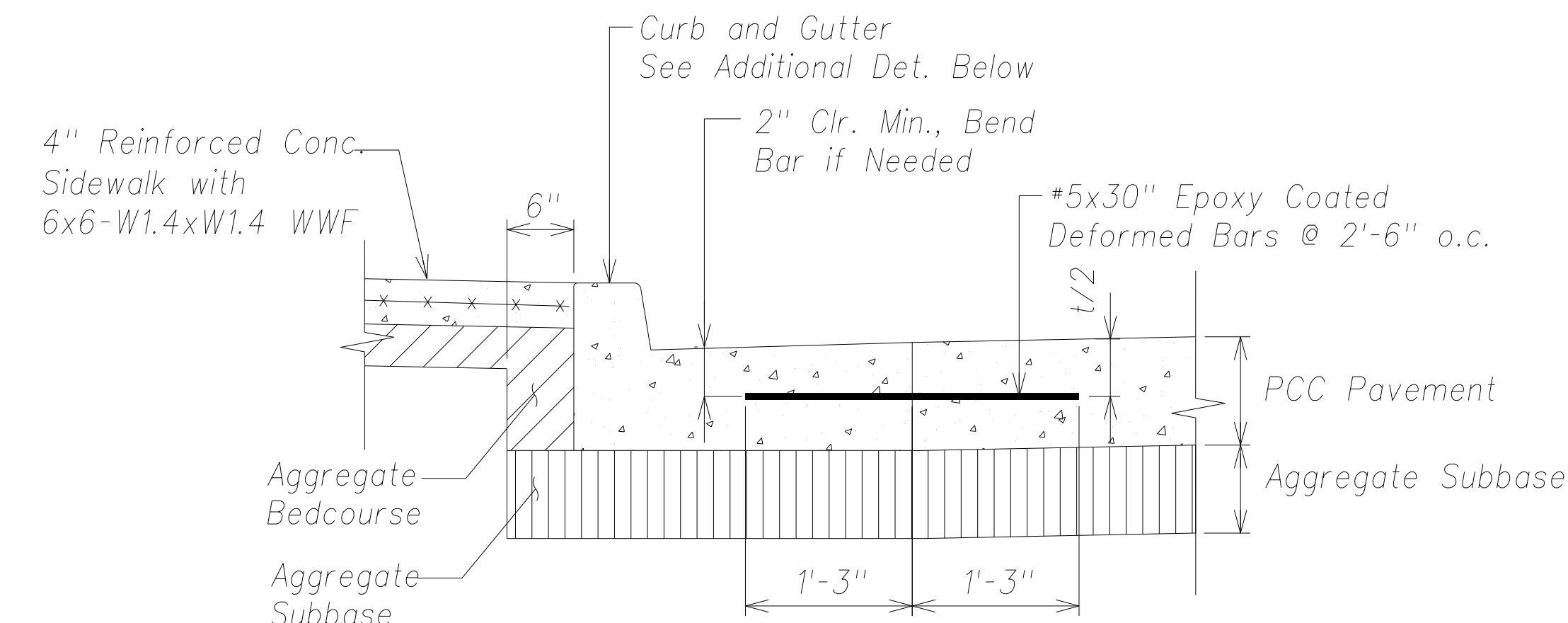
Note:

Curb depth shall be equal to the thickness of the existing AC pavement plus the AC base, but not less than 10".

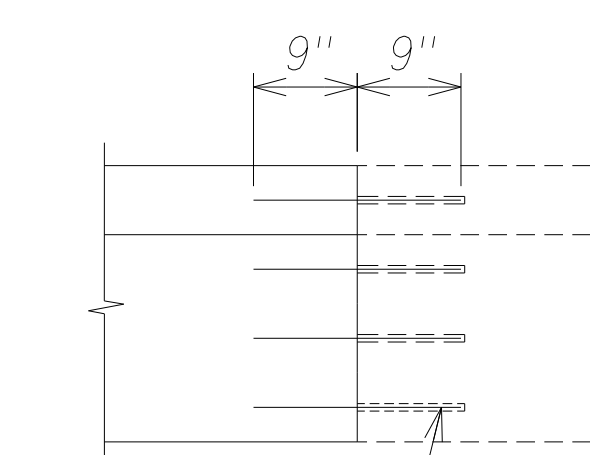
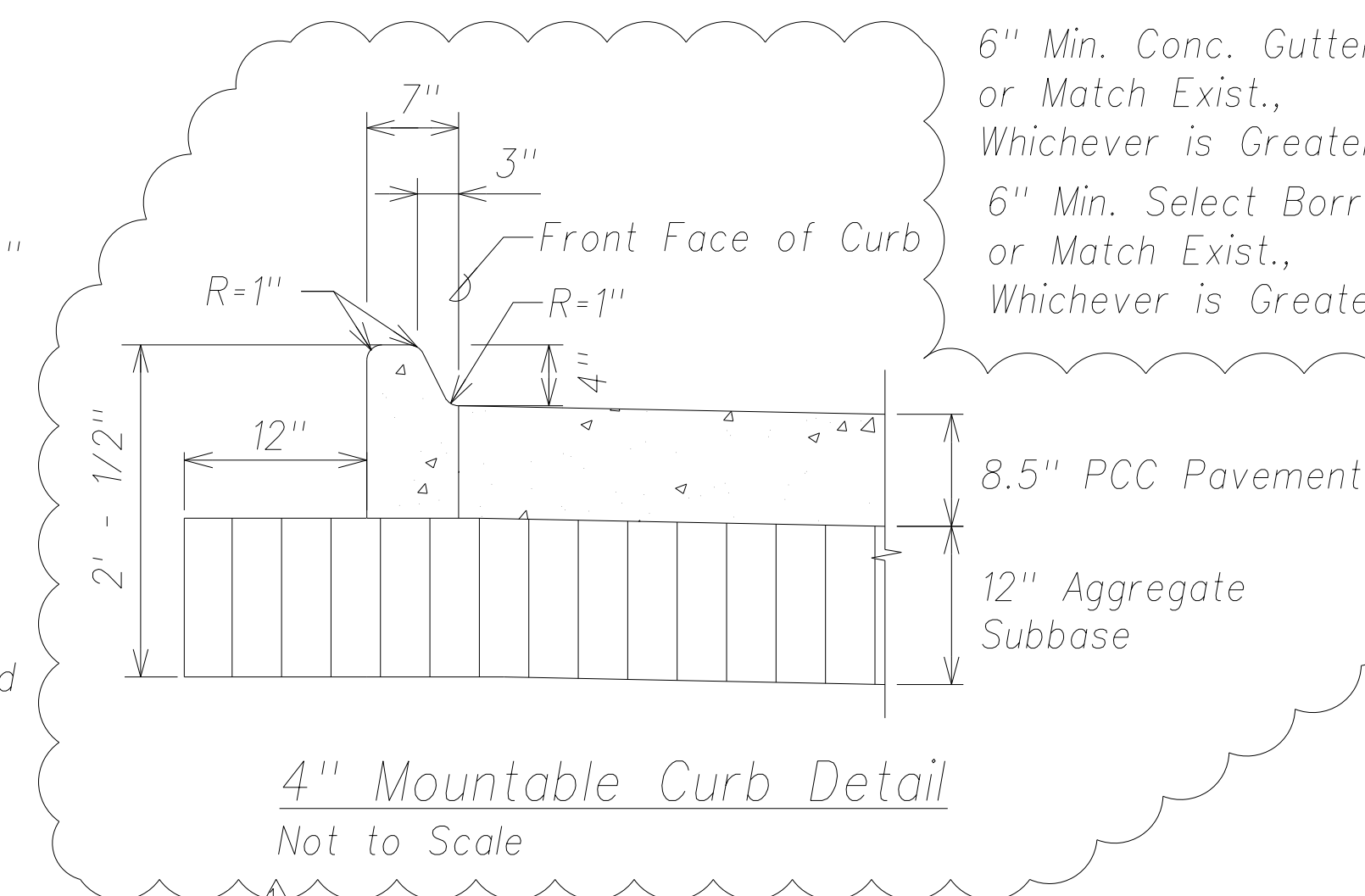
Concrete Curb Against Existing AC Pavement
Not to Scale



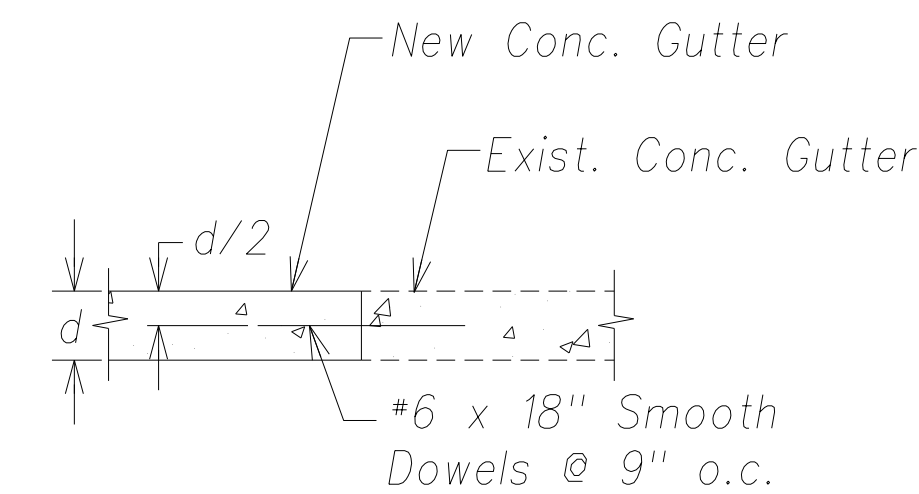
Concrete Curb On New PCC
Not to Scale
Pavement



Concrete Curb and Gutter Detail
Not to Scale



Plan

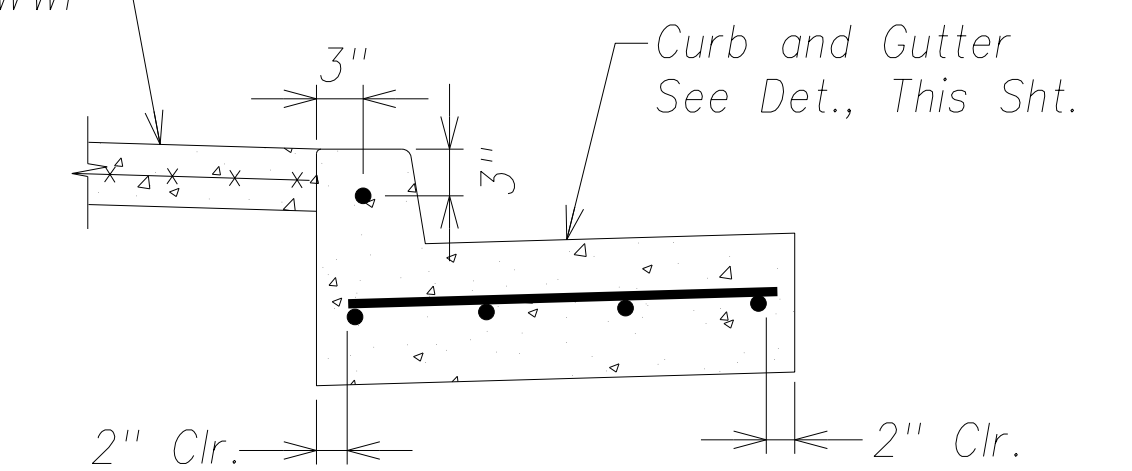


Section Through Gutter

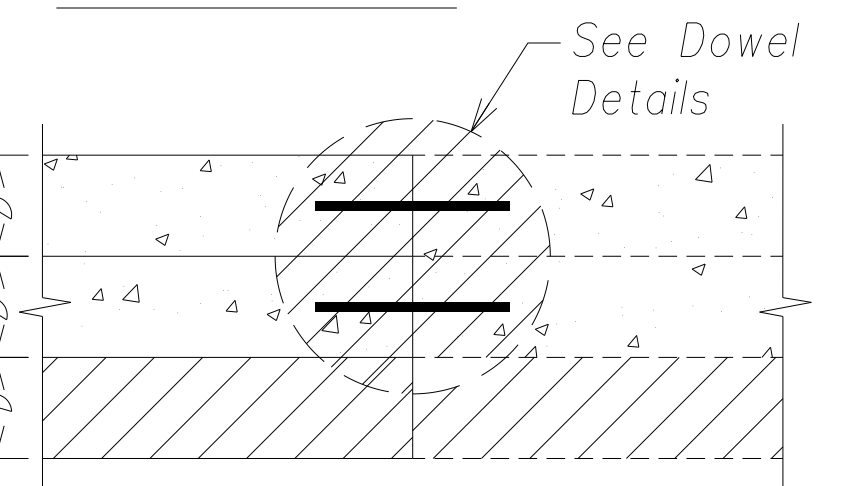
Doweling Notes:

1. Provide Dowels as shown.
2. Drill holes as shown, in the existing curb and gutter and/or sidewalk. Clean hole of dust and debris. Fill hole completely with epoxy grout, and install dowel.
3. Epoxy grout shall be two-component, epoxy-resin system and shall comply with the requirements of AASHTO M 235 (ASTM C-881).
4. Contractor shall have the option to wet set dowels instead of drilling and epoxy filling.

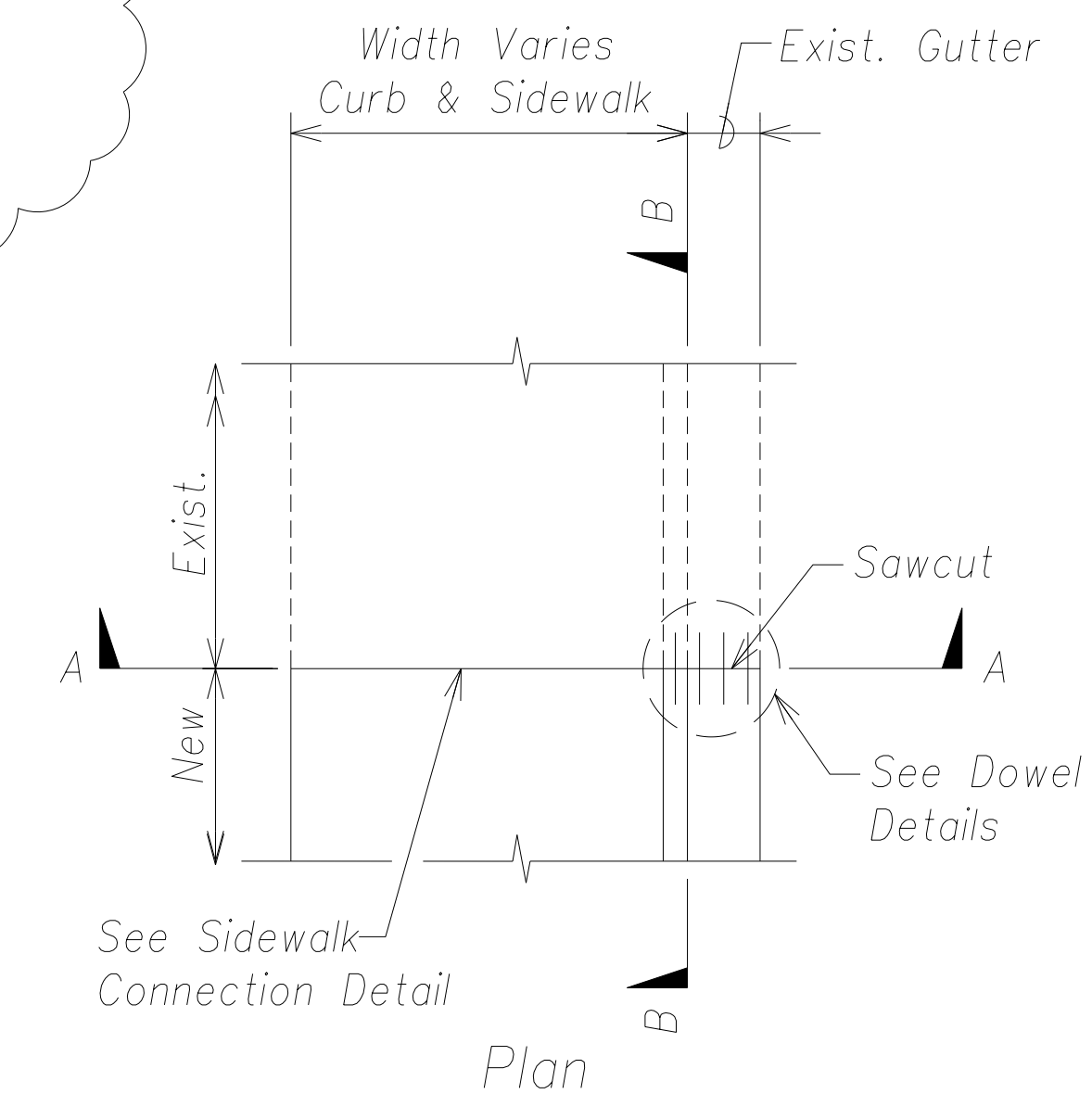
Dowel Detail
Not to Scale



Section "A-A"



Section "B-B"



Curb and Gutter Connection Detail
Not to Scale



THIS WORK WAS PREPARED BY ME
OR UNDER MY SUPERVISION AND
CONSTRUCTION OF THIS PROJECT
WILL BE UNDER MY OBSERVATION.

SIGNATURE	April 30, 2016 EXPIRATION DATE OF THE LICENSE
-----------	---

07/30/14	1	Add detail.
Date		Revision
STATE OF HAWAII DEPARTMENT OF TRANSPORTATION HIGHWAYS DIVISION		
ROADWAY DETAILS		
<u>PHASE 1 - KAUMUALII HIGHWAY</u> <u>LIHUE MILL BRIDGE TO RICE STREET</u>		
<u>PHASE 2 - NAWILIWILI STREAM BRIDGE</u> <u>AND MAUKA WIDENING</u>		
Scale: As Shown		Date: March 25, 2013
SHEET No. C-58 OF 84 SHEETS		