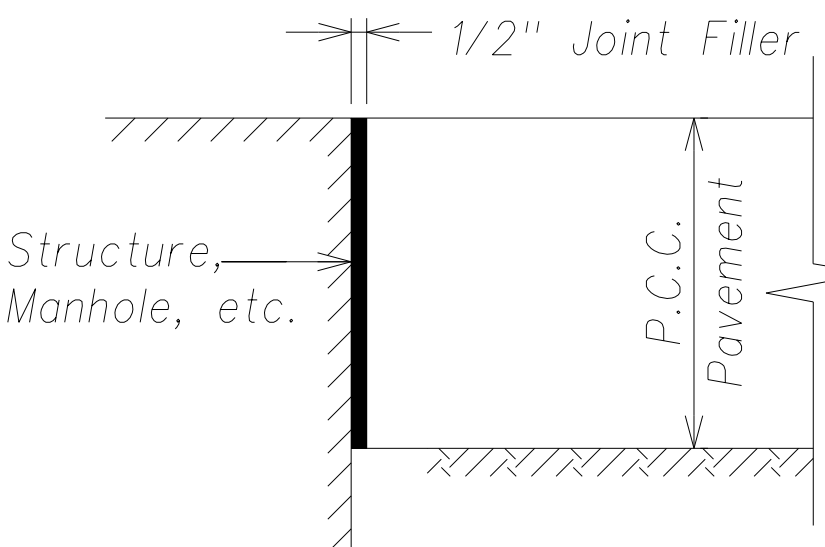


FED. ROAD DIST. NO.	STATE	FED. AID PROJ. NO.	FISCAL YEAR	SHEET NO.	TOTAL SHEETS
HAWAII	HAW.	ARR-050-1(036)	FY13/14	Model	131

Notes:

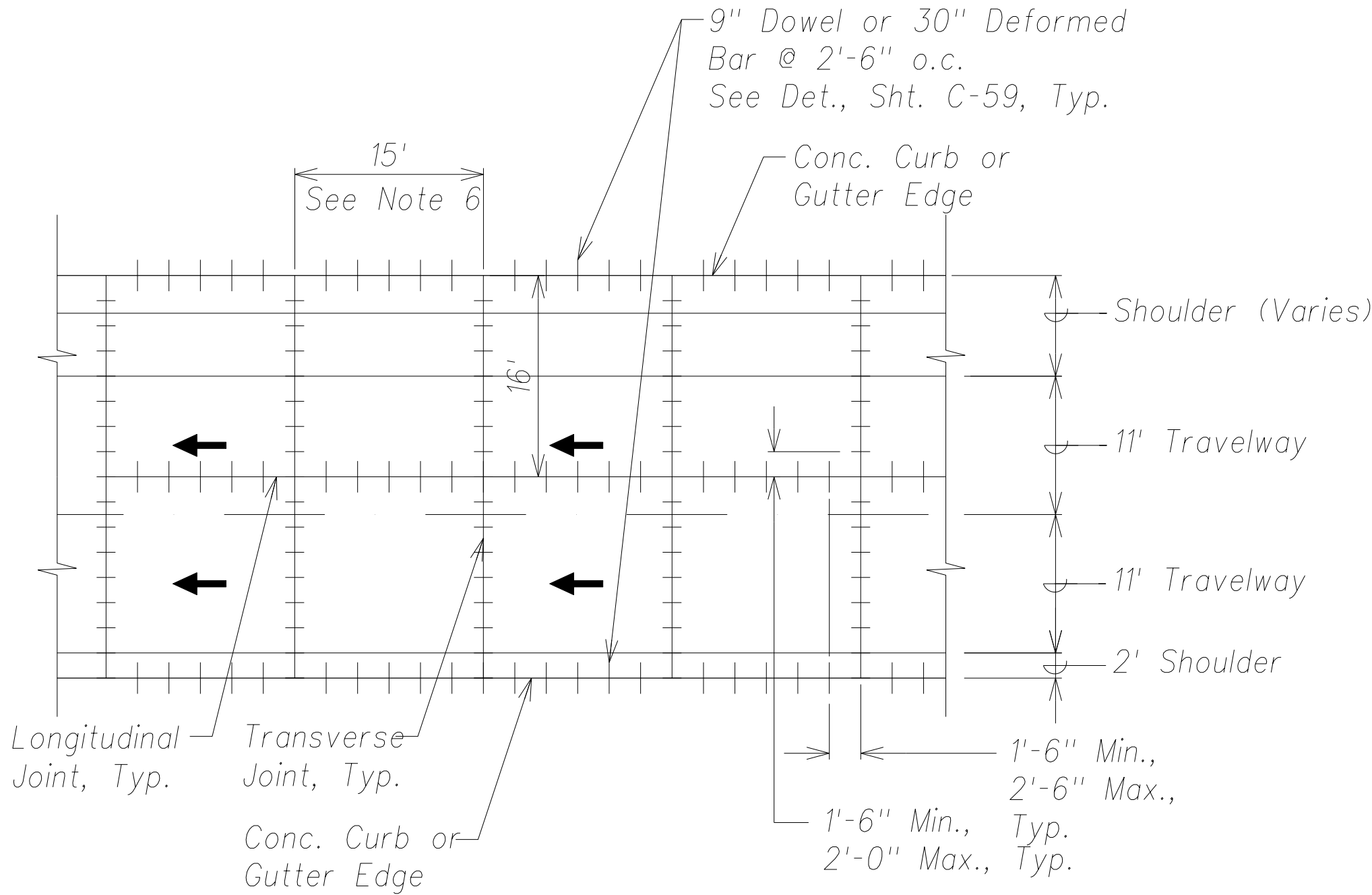
- Isolation joints shall be 1/2" wide, unless otherwise noted, and filled with joint filler.
- Boxouts shall be large enough to provide 12" clearance between the structure and surrounding isolation joint.
- Boxout details for rectangular inlets, pullboxes, or other structures shall be similar.



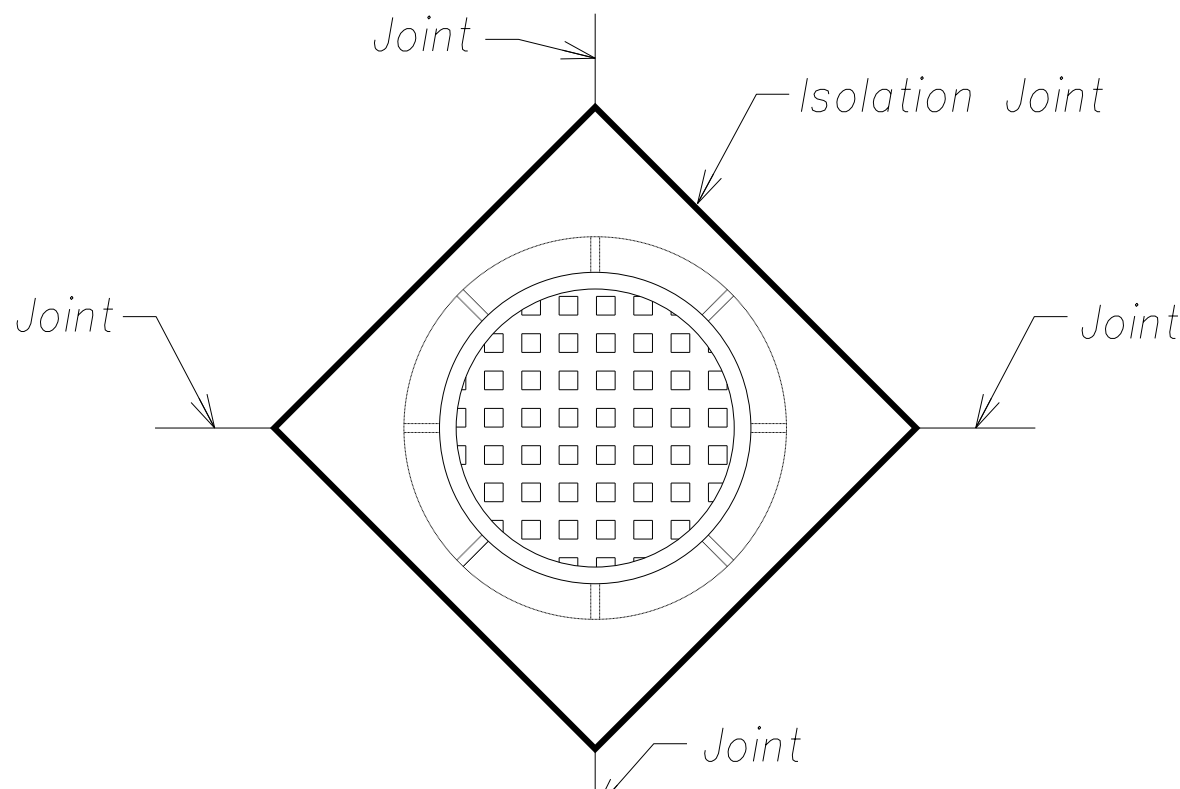
Isolation Joint Detail  
Not to Scale

Notes:

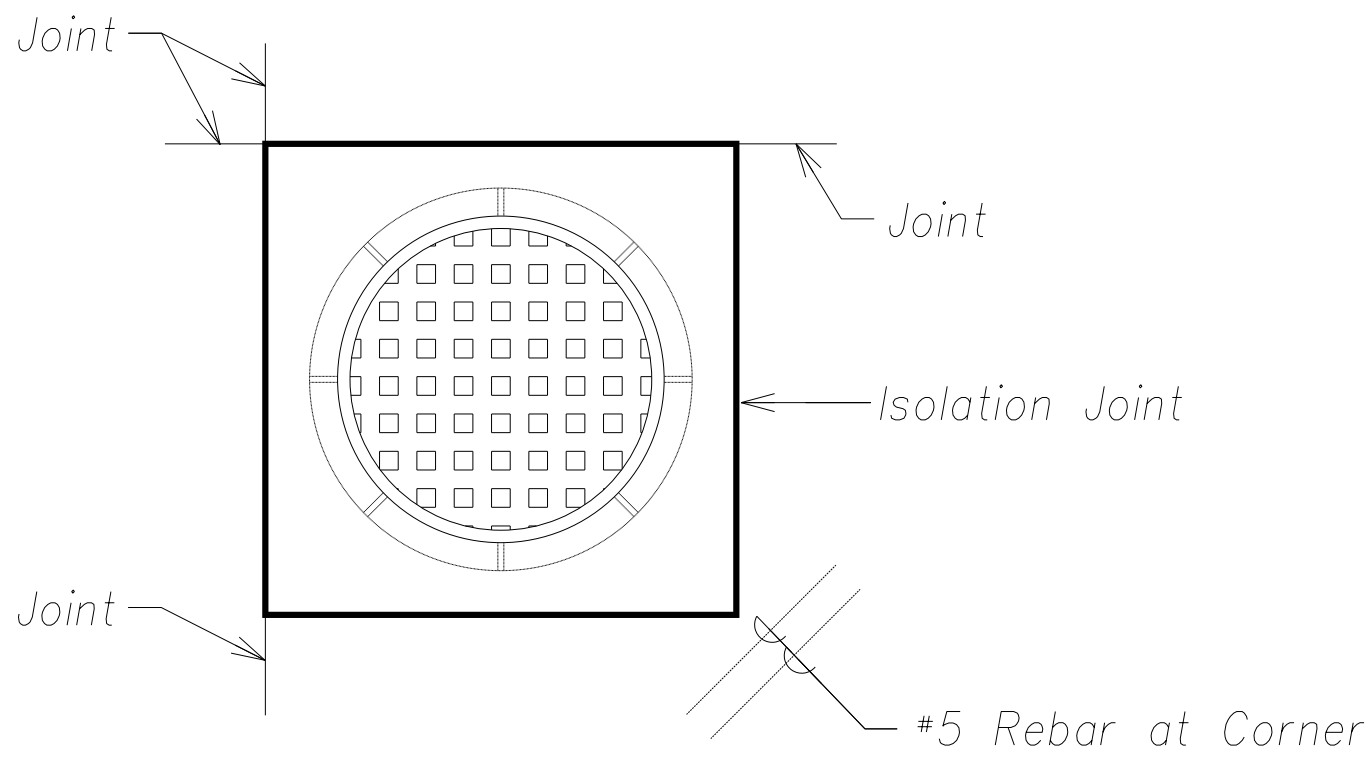
- Space transverse joint as shown on the Jointing Plans.
- Reinforce odd shaped slabs and slabs with mismatched joints shown on the Jointing Plans. See State Std. Det. D-20 and Sht. C-60. Deformed Bars shall be 30" Long.
- Provide shop drawings for review by the engineer for joint layout where obstructions such as manholes are encountered, and at intersections with other streets.
- Portland cement concrete pavement shall attain a minimum 14-day flexural strength,  $f_r=650\text{psi}$ .
- For Transverse Joint and Longitudinal Joint details, see State Standard Details D-19 and D-21. Deformed Bars shall be 30" Long.
- See Jointing Plans for Transverse Joint spacing.



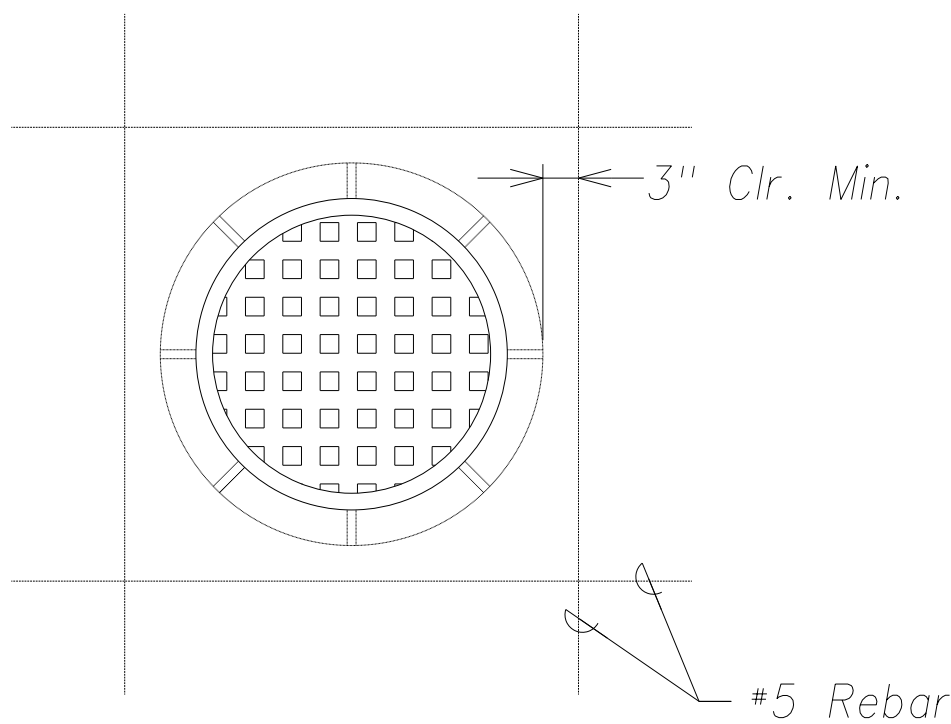
Typical PCC Pavement Joint  
Location and Layout Plan  
Not to Scale



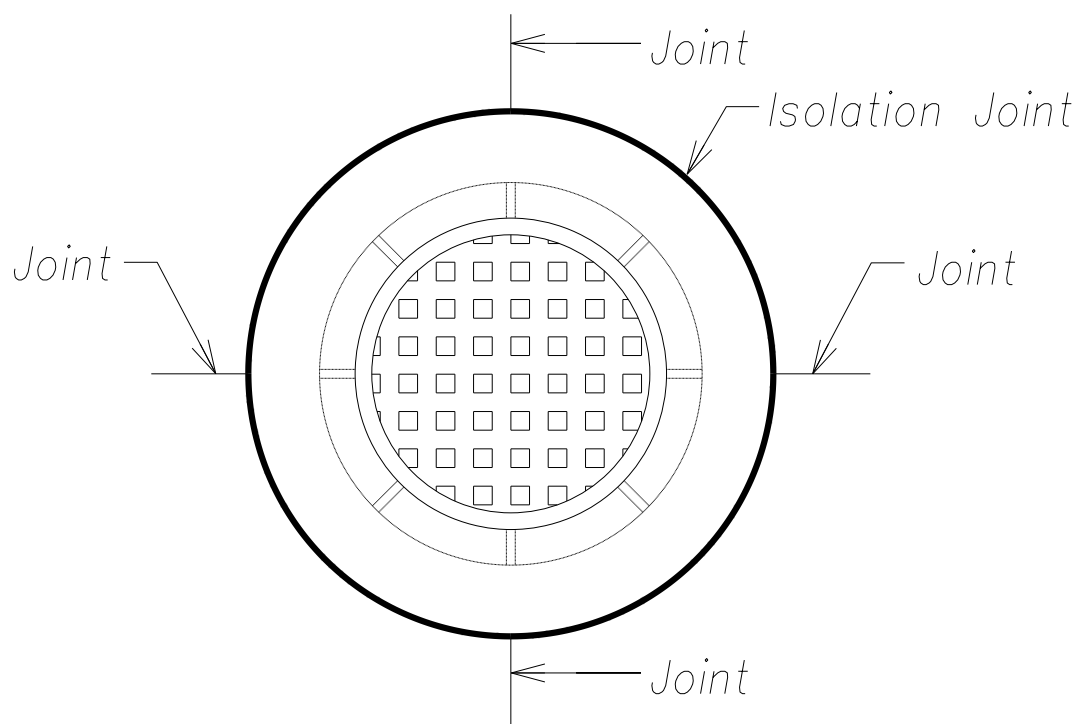
Diamond Boxout



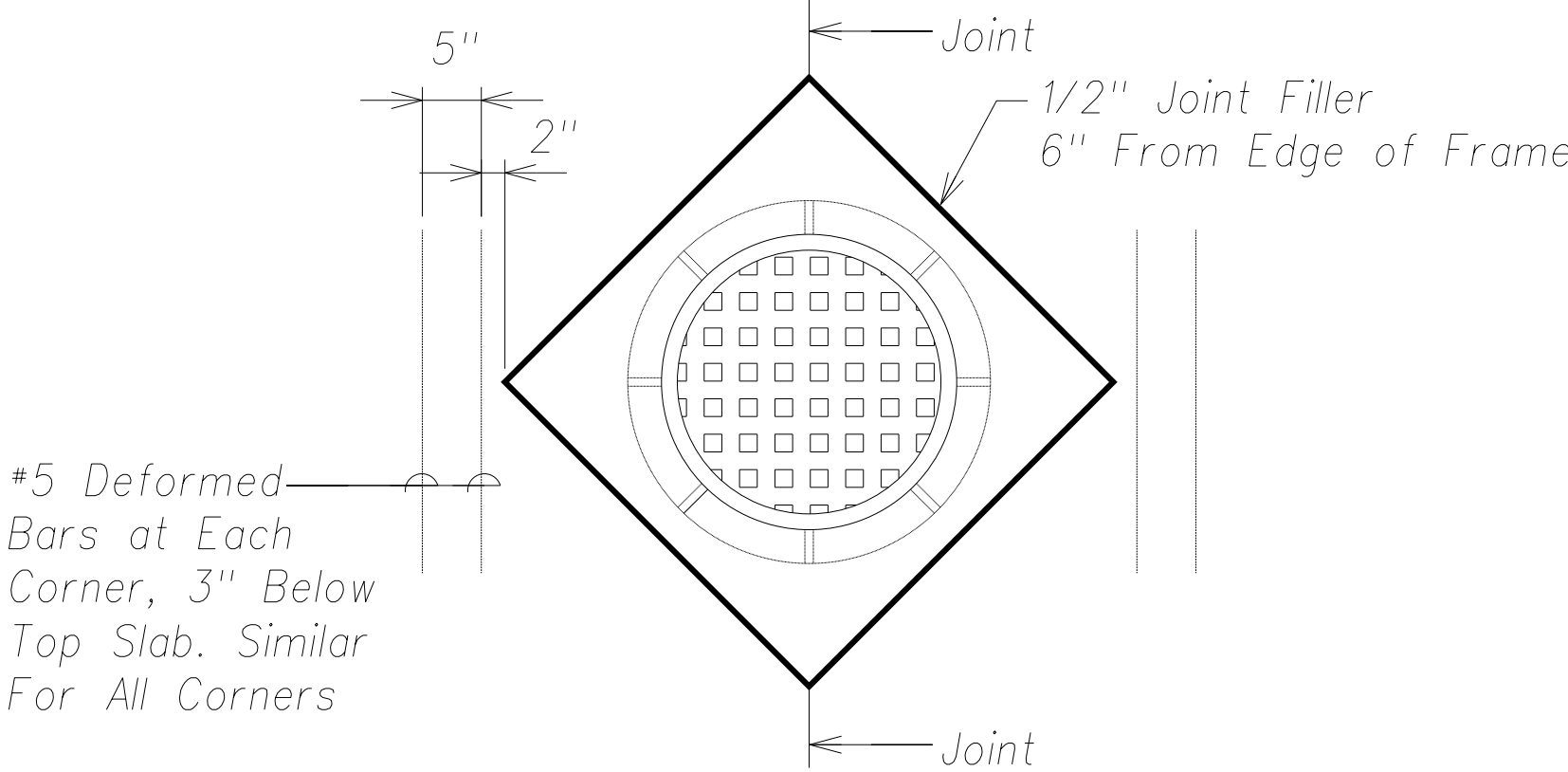
Square Boxout  
Not to Scale



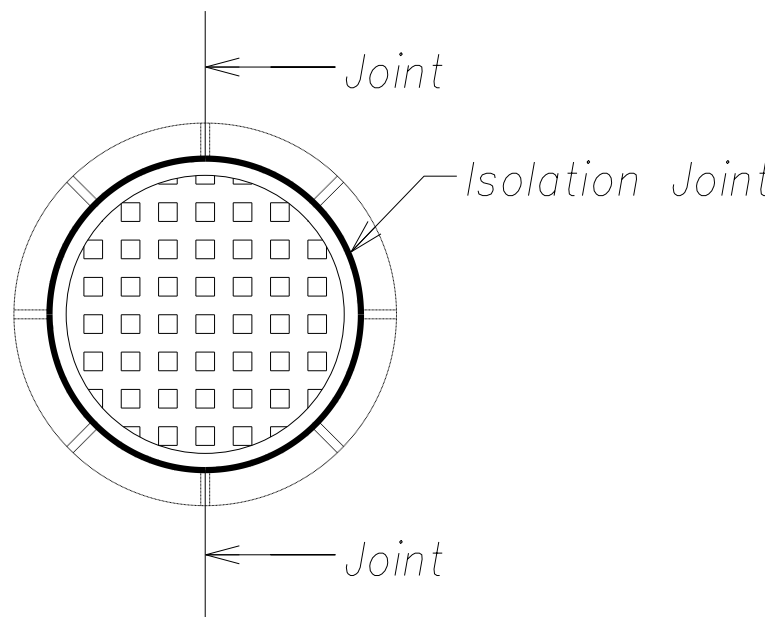
Reinforced Panel  
Not to Scale



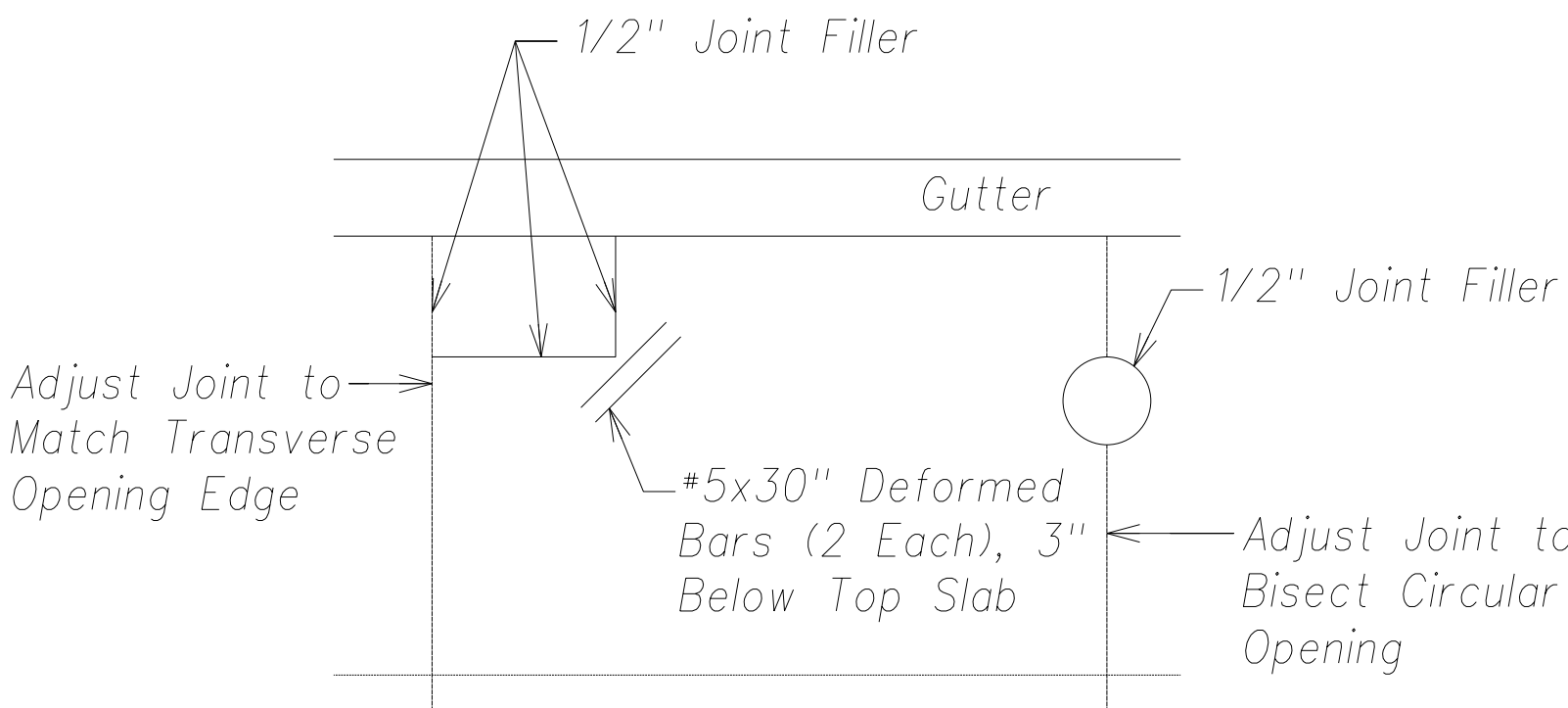
Circular Boxout



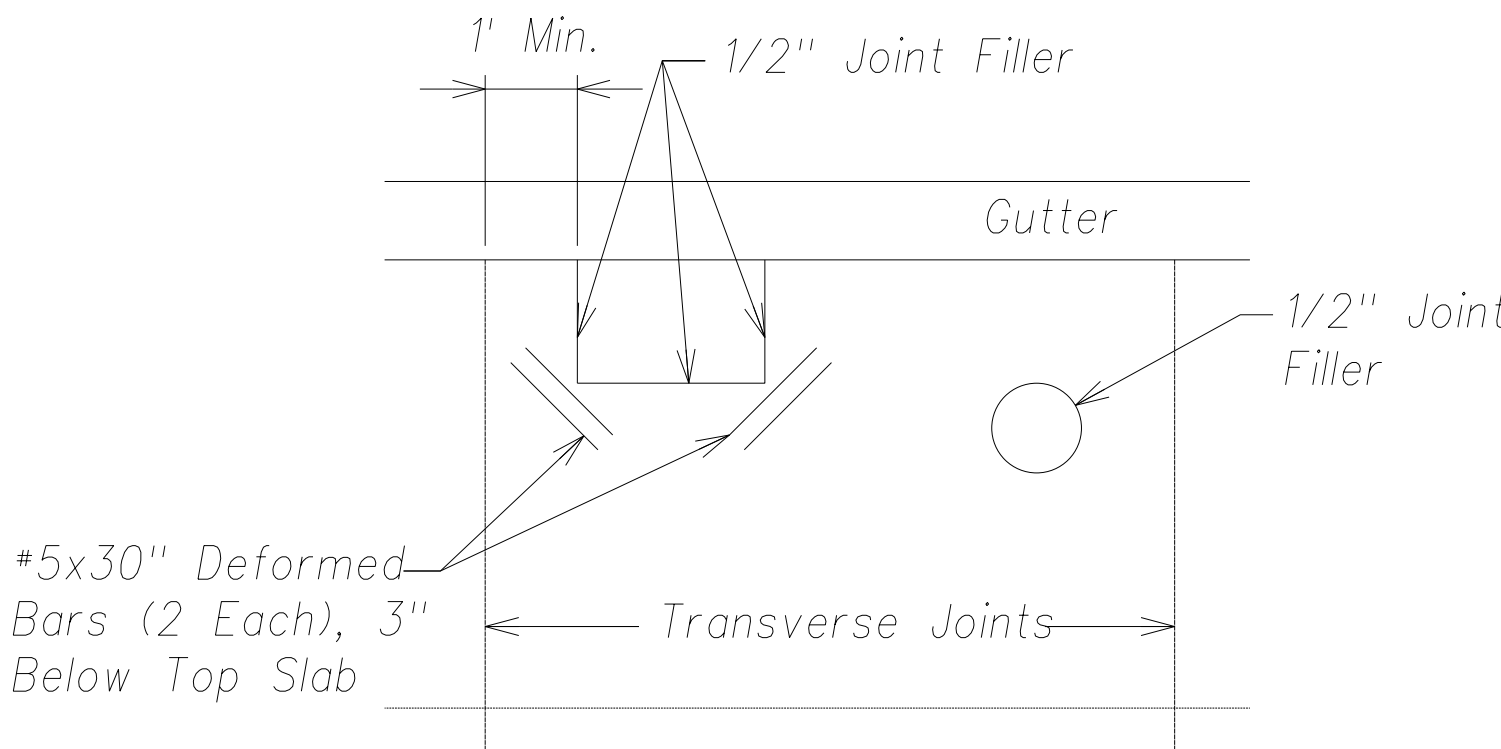
Openings with Corners -  
Corners at a Joint Detail  
Not to Scale



No Boxout  
(Isolation Around Manhole)  
Not to Scale



Openings Near Joints Detail  
Not to Scale



Openings Away From Joints Detail  
Not to Scale



THIS WORK WAS PREPARED BY ME  
OR UNDER MY SUPERVISION AND  
CONSTRUCTION OF THIS PROJECT  
WILL BE UNDER MY OBSERVATION.

Signature: \_\_\_\_\_  
April 30, 2016  
EXPIRATION DATE  
OF THE LICENSE

STATE OF HAWAII  
DEPARTMENT OF TRANSPORTATION  
HIGHWAYS DIVISION

PAVEMENT JOINT DETAILS

PHASE 1 - KAUMUALII HIGHWAY  
LIHUE MILL BRIDGE TO RICE STREET  
PHASE 2 - NAWILIWILI STREAM BRIDGE  
AND MAUKA WIDENING

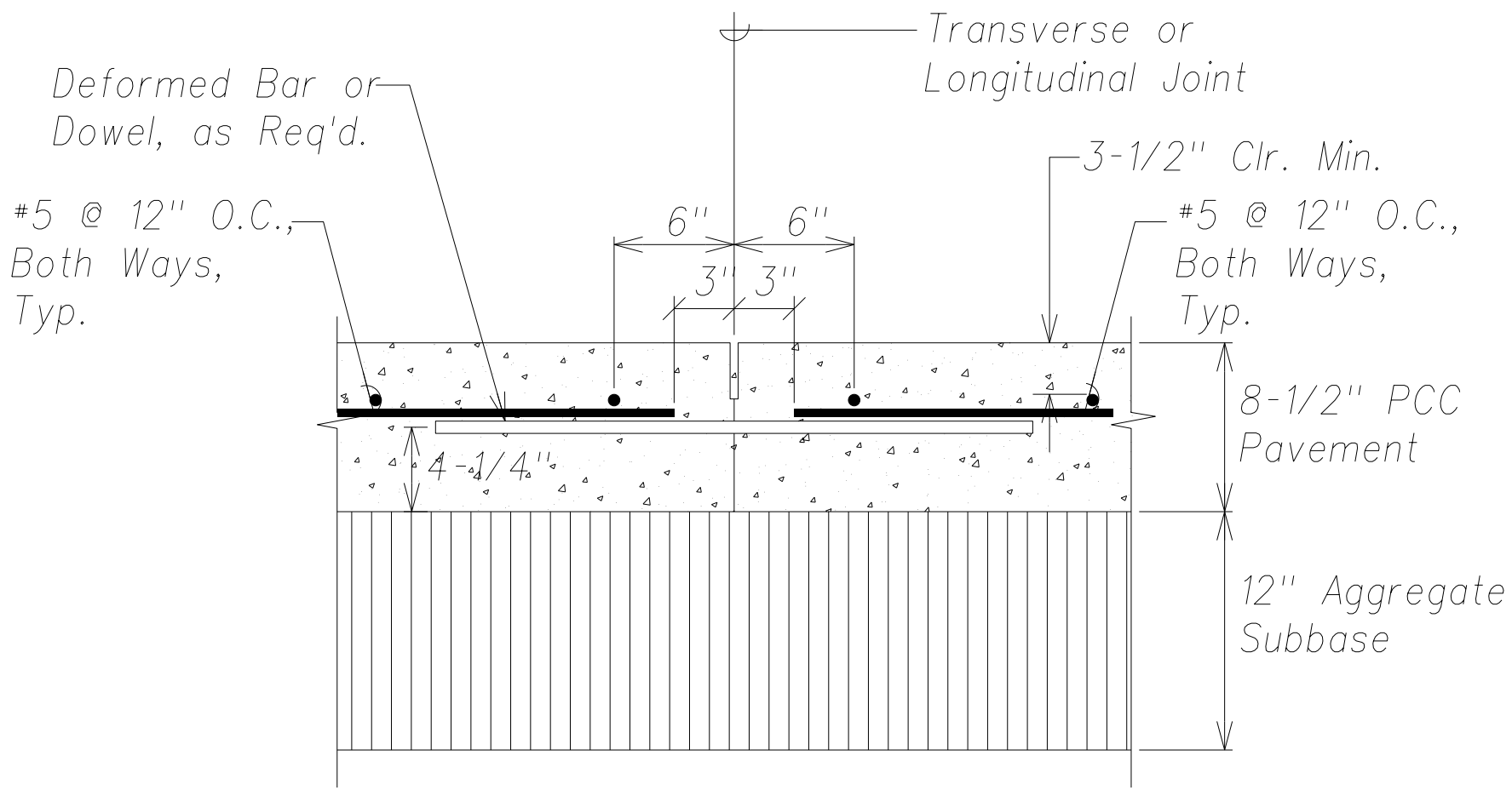
Scale: As Shown Date: March 25, 2013  
SHEET No. C-59 OF 84 SHEETS

ORIGINAL PLAN	NO. _____	SURVEY PLOTTED BY _____	DATE _____
		DRAWN BY _____	_____
		DESIGNED BY _____	_____
		CHECKED BY _____	_____

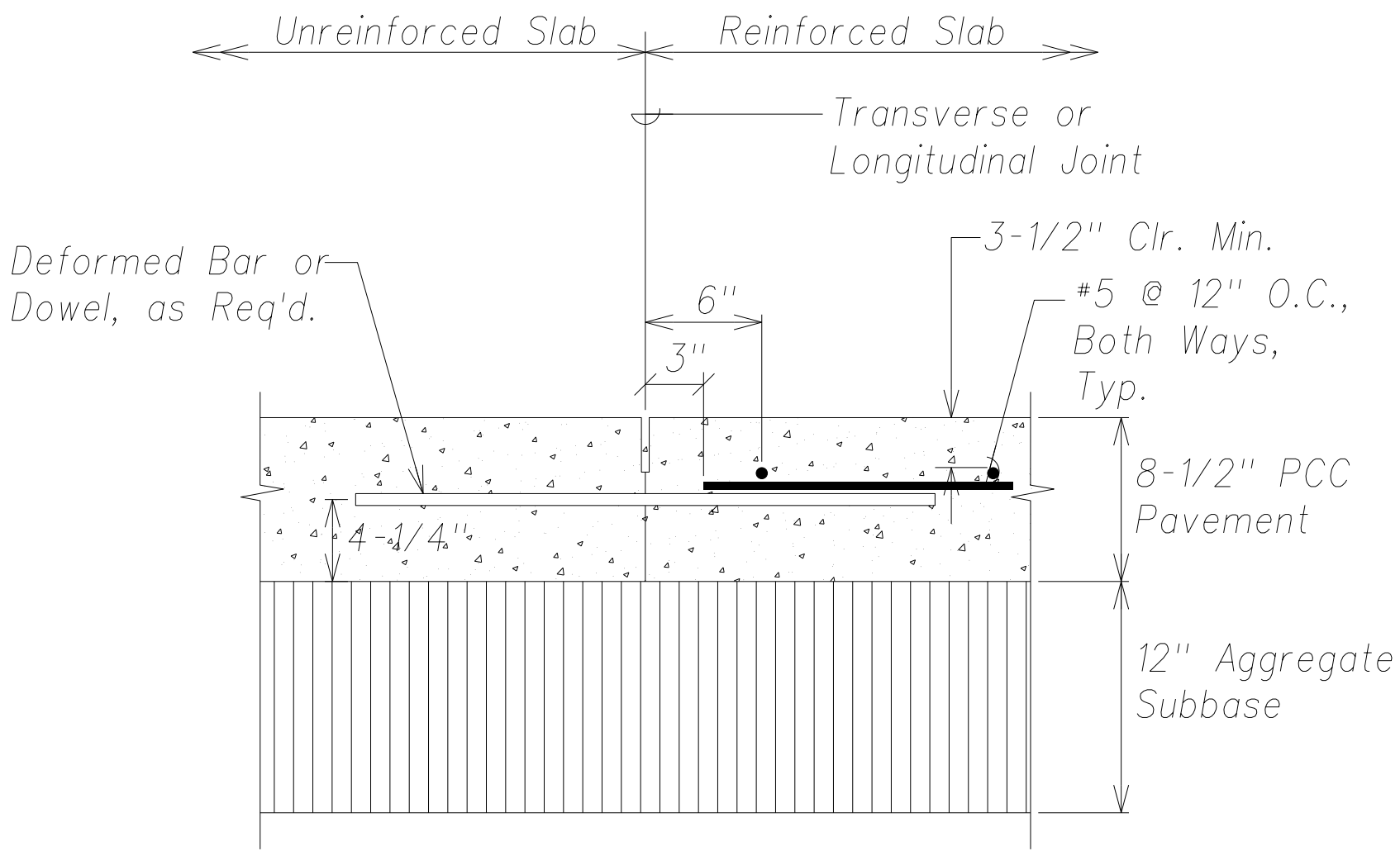
"AS-BUILT"

Model

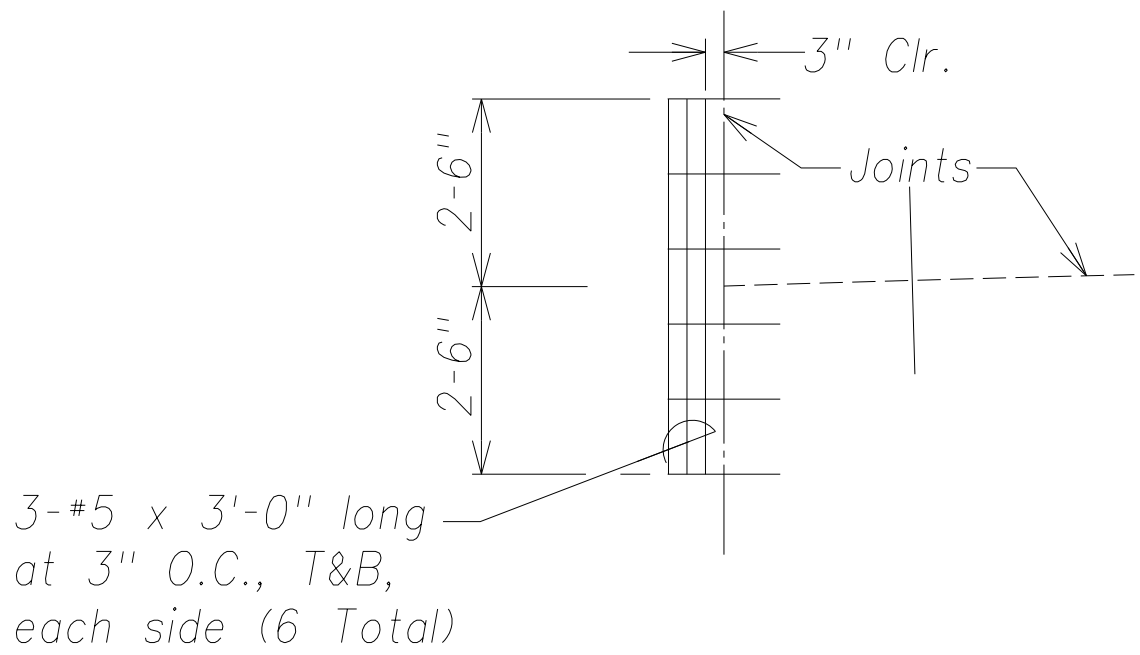
FED. ROAD DIST. NO.	STATE	FED. AID PROJ. NO.	FISCAL YEAR	SHEET NO.	TOTAL SHEETS
HAWAII	HAW.	ARR-050-1(036)	FY13/14	Model	131



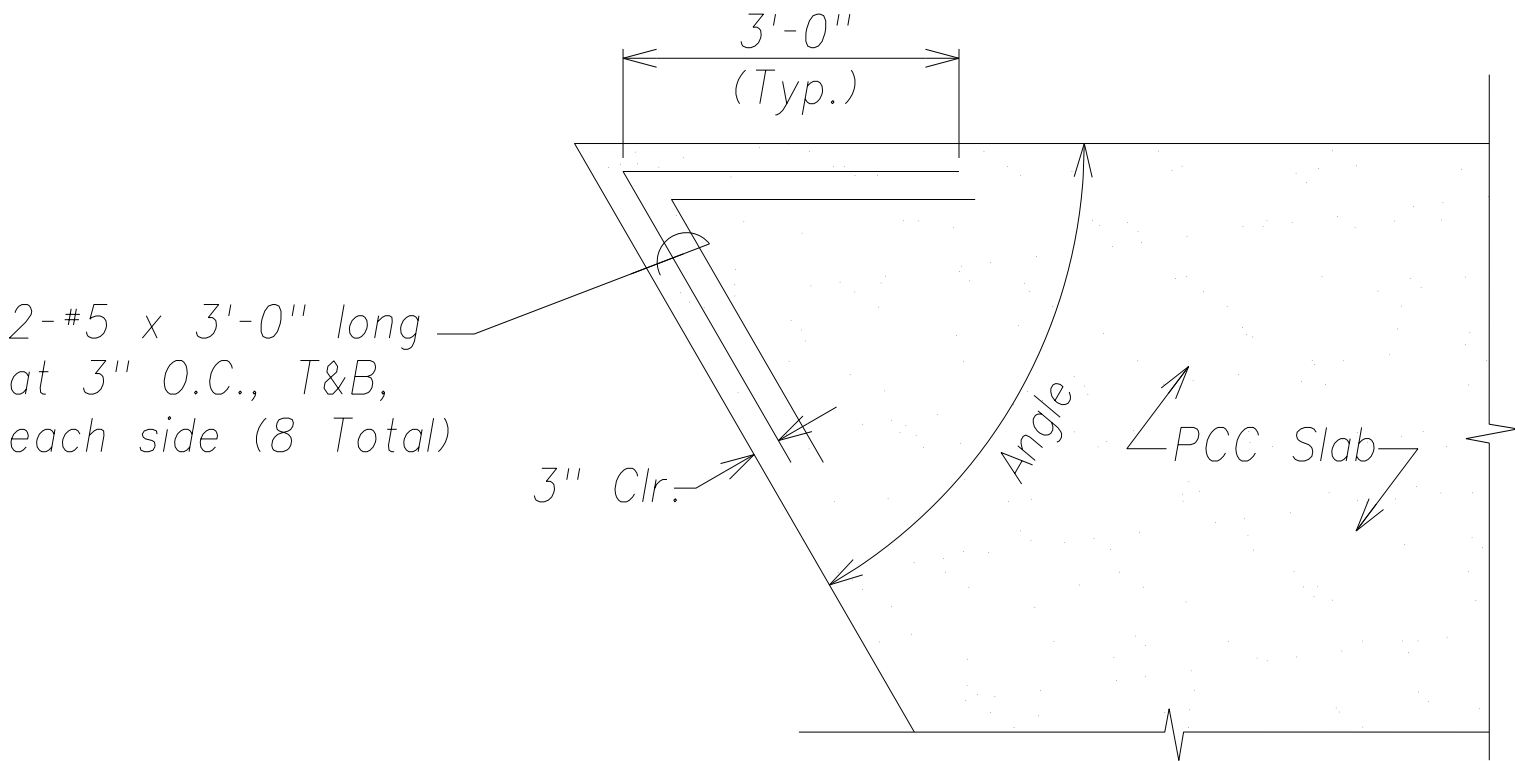
Typical Odd-Shaped PCC Pavement Reinforcing (At Reinforced Slab)  
Not to Scale



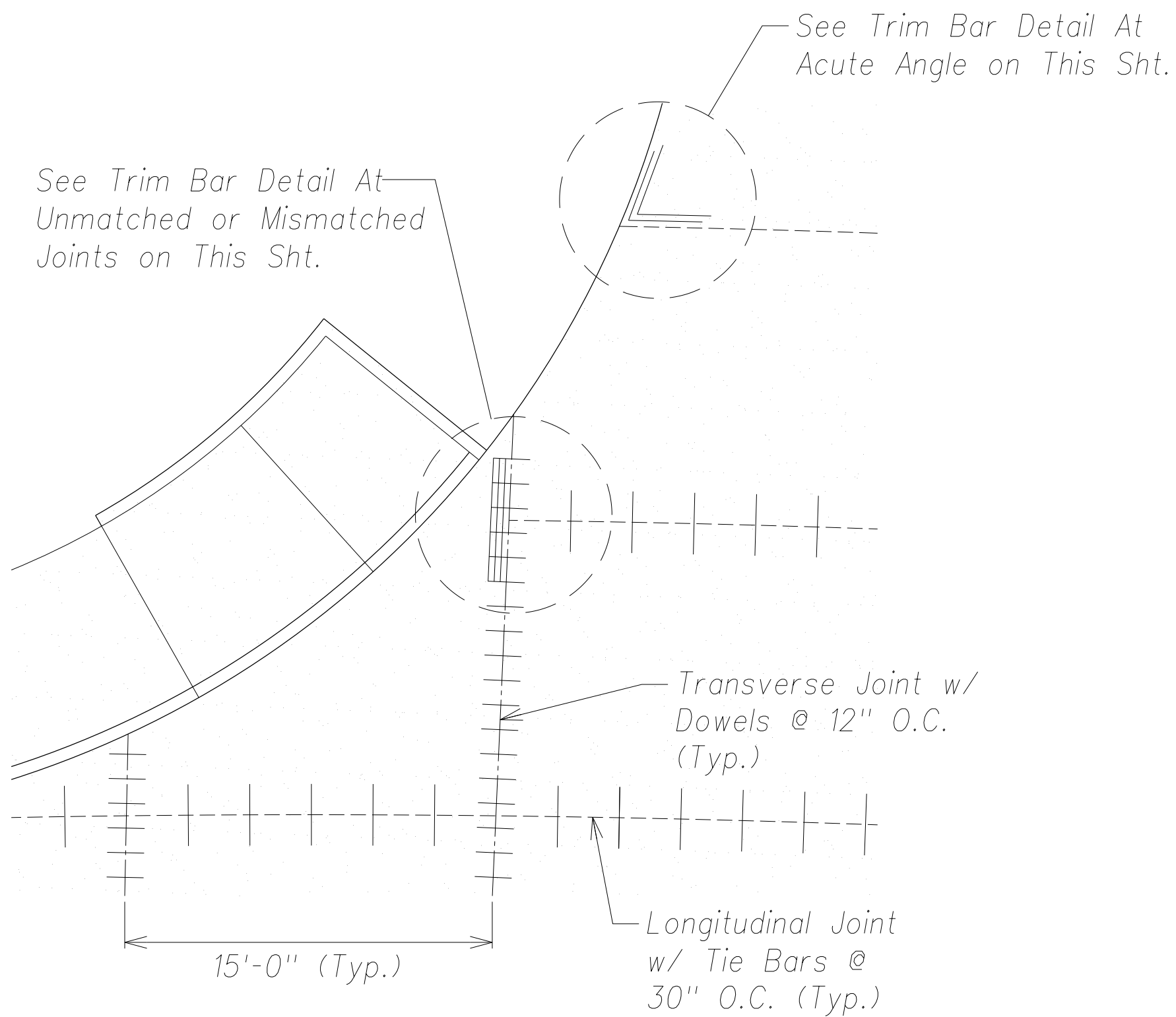
Typical Odd-Shaped PCC Pavement Reinforcing (At Reinforced Slab)  
Not to Scale



Typical Trim Bar Detail At Unmatched or Mismatched Joints  
Not to Scale



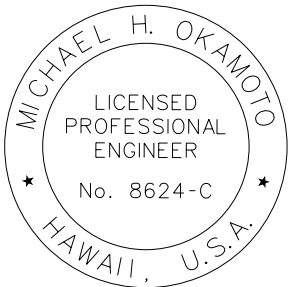
Typical Trim Bar Detail At Acute Angle (Less than 70°)  
Not to Scale



Typical Added Trim Bar Detail  
Not to Scale

Odd-Shaped Slab Reinforcing Notes:

1. For dowel or deformed bar details and joint construction details, see State Standard Plans D-18, D-19 and D-21.
2. Reinforce odd shaped slabs: Slabs with ratio of length of one side to other side greater than 1.25 or less than 0.8; slabs with unmatched (or mismatched) joints; triangular shaped slabs; or slabs with at least one side larger than 15 feet.
3. Slabs requiring reinforcing shall be reinforced with #5 deformed bars at 12" o.c., each way (transversely and longitudinally).



THIS WORK WAS PREPARED BY ME  
OR UNDER MY SUPERVISION AND  
CONSTRUCTION OF THIS PROJECT  
WILL BE UNDER MY OBSERVATION.

SIGNATURE \_\_\_\_\_  
EXPIRATION DATE  
OF THE LICENSE

STATE OF HAWAII  
DEPARTMENT OF TRANSPORTATION  
HIGHWAYS DIVISION

PAVEMENT JOINT DETAILS

PHASE 1 - KAUMUALII HIGHWAY  
LIHUE MILL BRIDGE TO RICE STREET  
PHASE 2 - NAWILIWILI STREAM BRIDGE  
AND MAUKA WIDENING

Scale: As Shown Date: March 25, 2013  
SHEET No. C-60 OF 84 SHEETS

ORIGINAL PLAN	NOTE BOOK	No.	DATE	SURVEY PLOTTED BY
				DRAWN BY
				DESIGNED BY
				CHECKED BY

"AS-BUILT"

Model