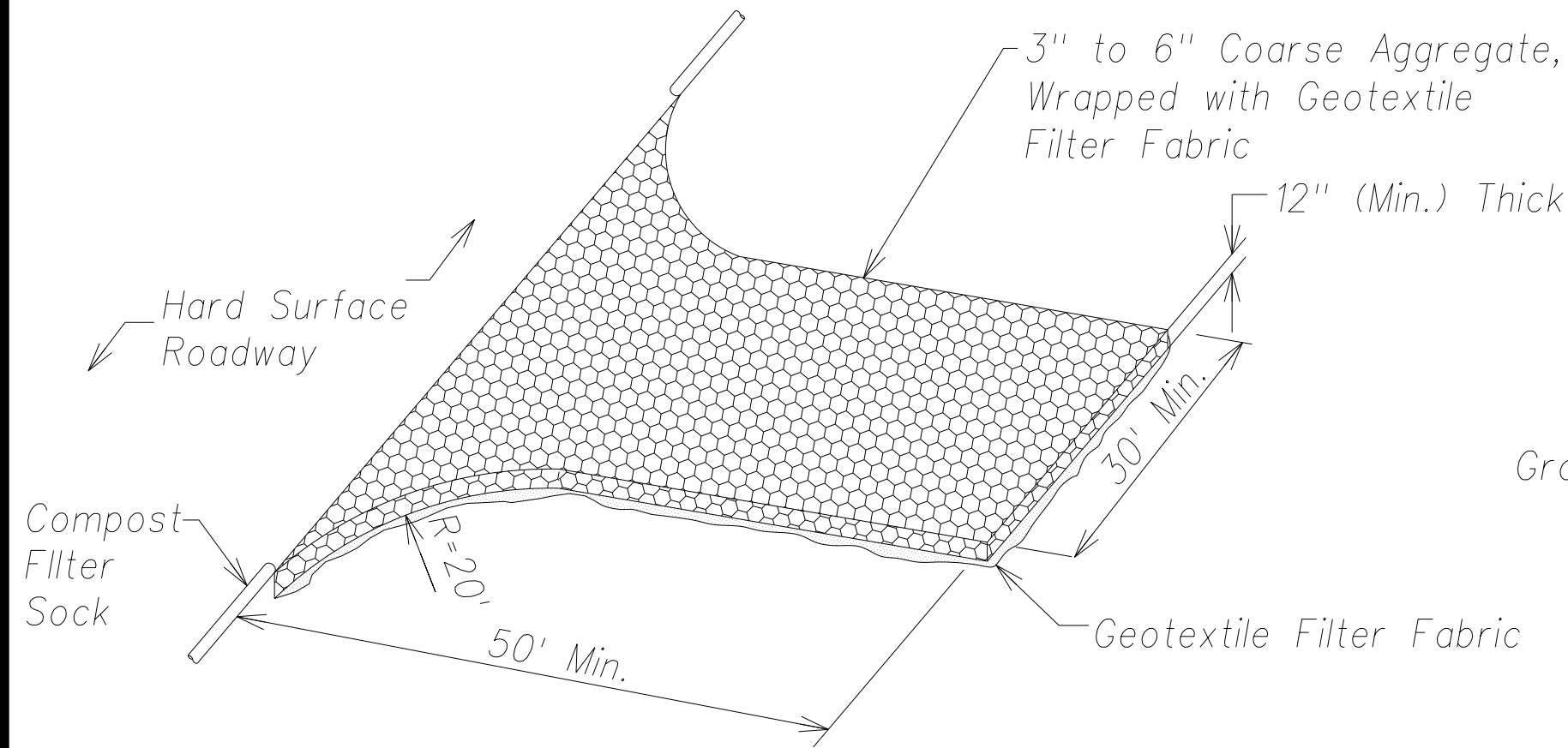
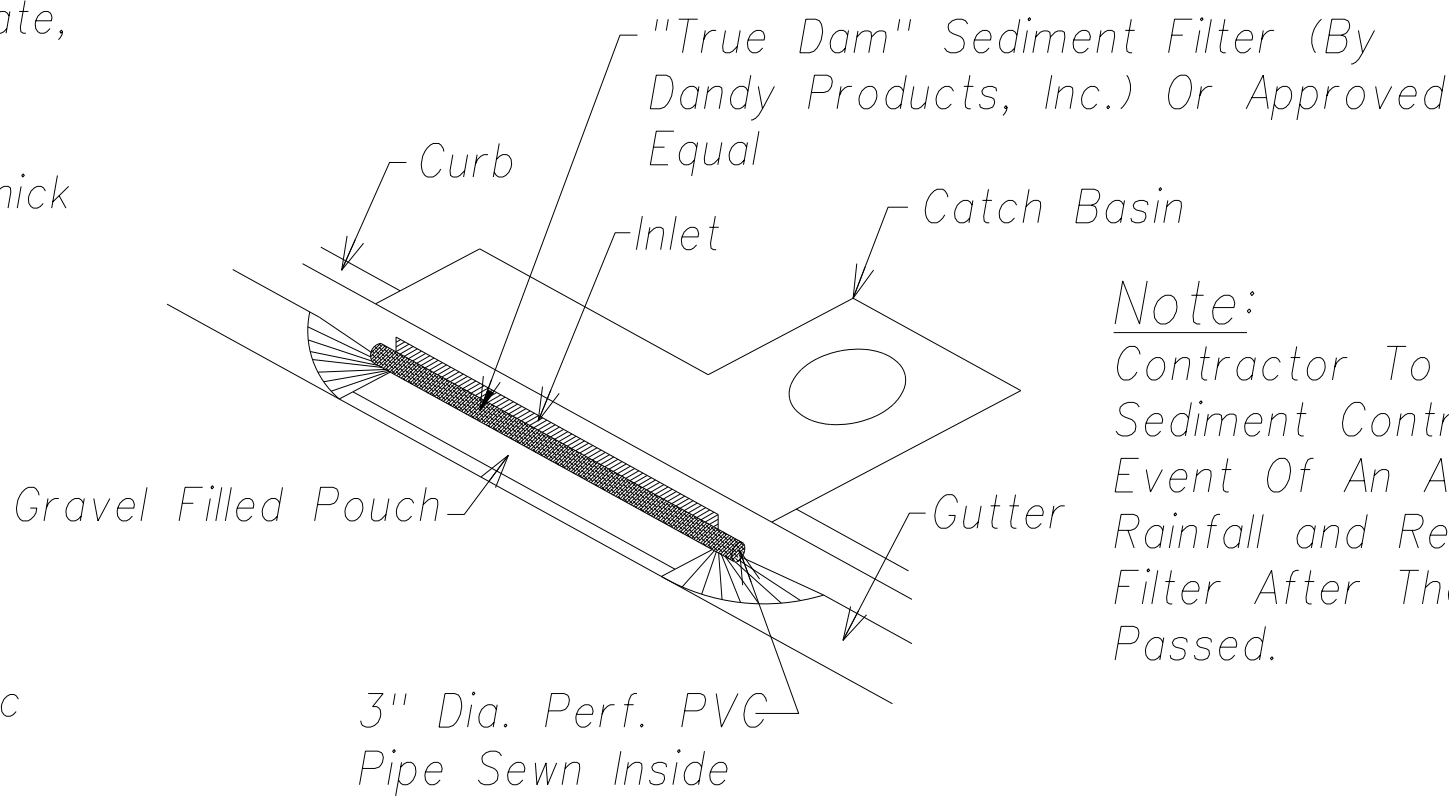


FED. ROAD DIST. NO.	STATE	FED. AID PROJ. NO.	FISCAL YEAR	SHEET NO.	TOTAL SHEETS
HAWAII	HAW.	ARR-050-1(036)	FY13/14	Model	50



Stabilized Construction Access
Not To Scale



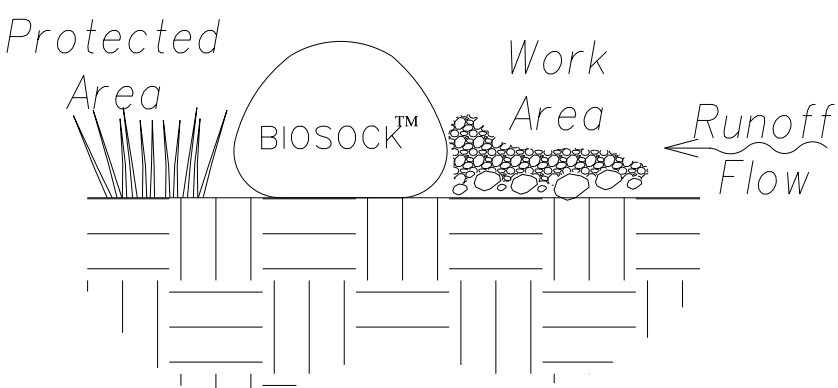
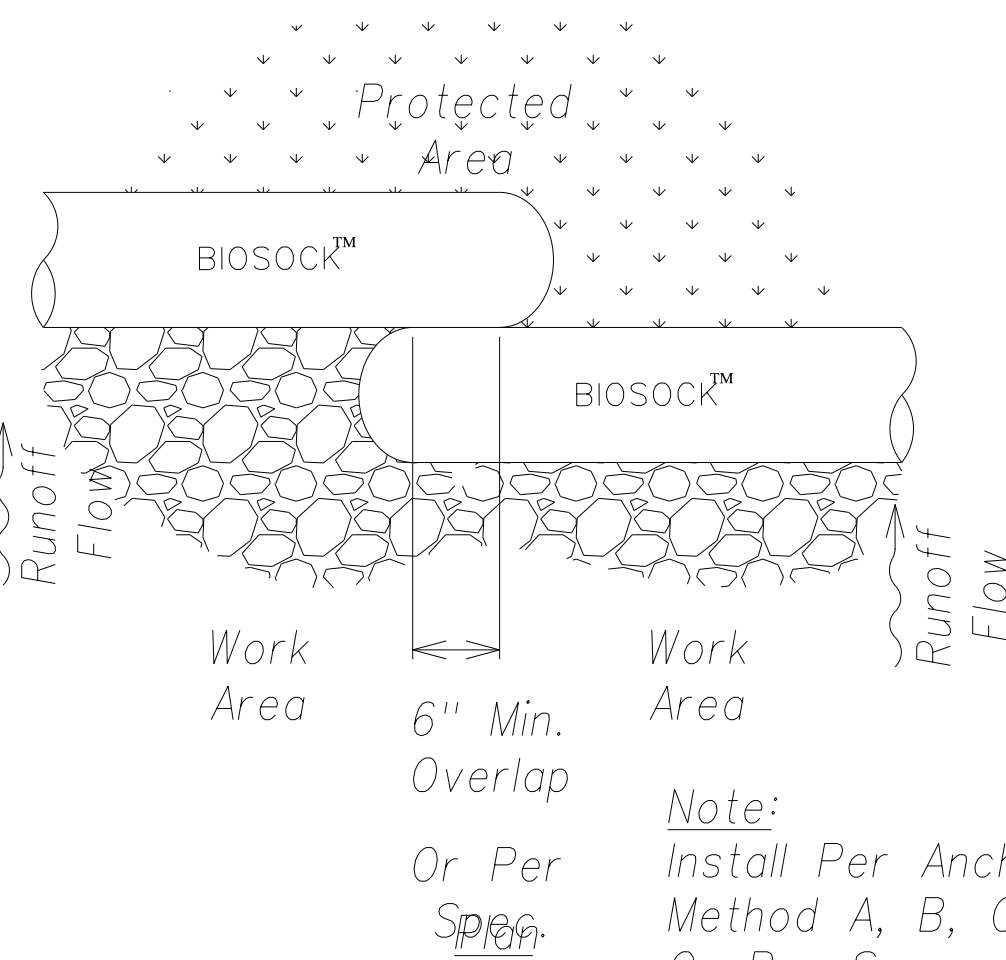
Inlet Protection At Catch Basin
Not To Scale

Note:
Contractor To Remove
Sediment Control Filter In The
Event Of An Above Average
Rainfall and Replace The
Filter After The Storm Has
Passed.

Compost Filter Sock Notes:

1. Compost filter sock shall utilize an outer layer of filtration mesh, and an inner layer

of containment netting. All layers shall collectively enclose the compost filtration media.

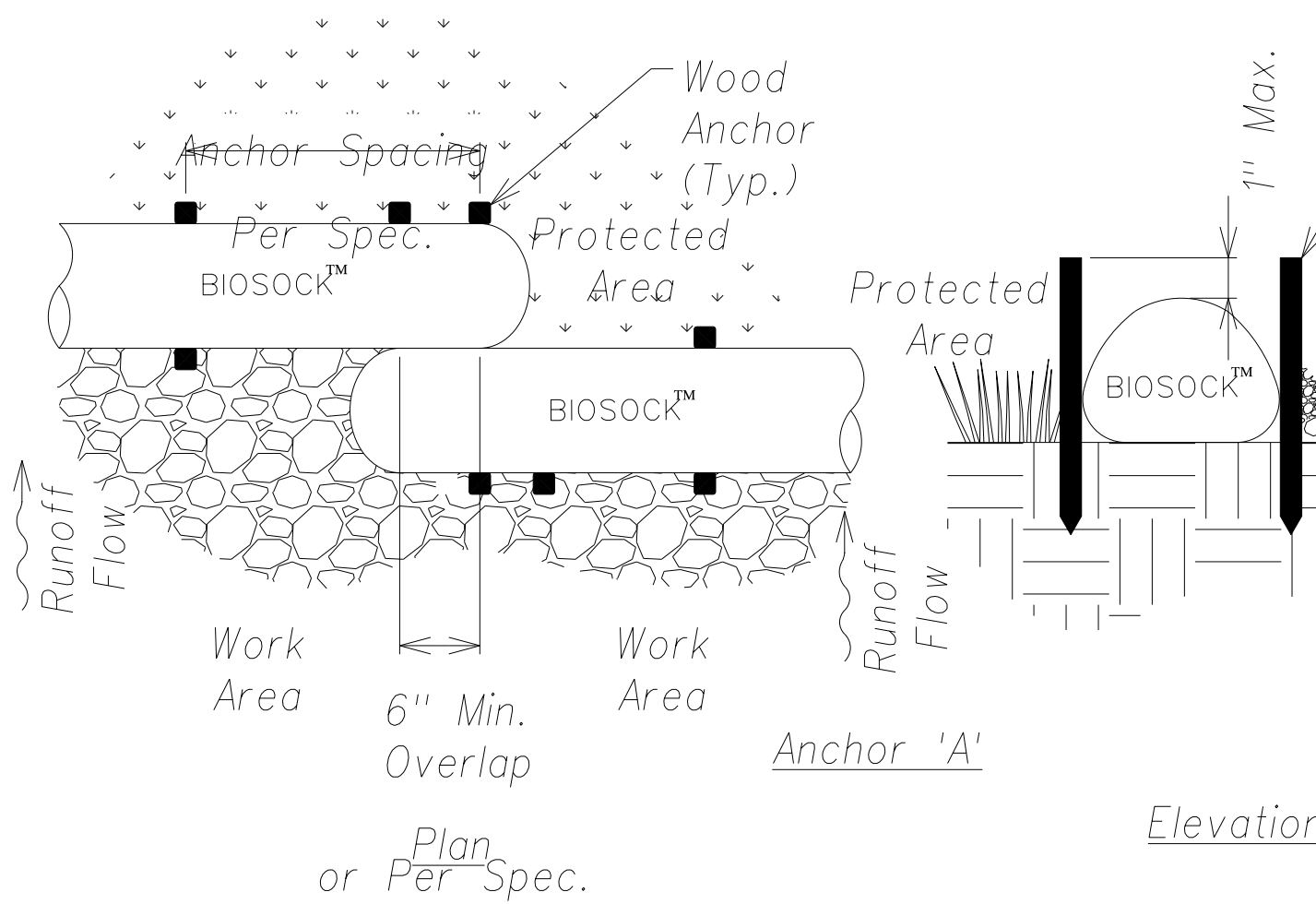


Elevation

Slope Gradient	Anchor Method	Anchor Spacing
< 4:1	Not Required	Not Required
4:1 TO 3:1	'A' OR 'B'	10'
3:1 TO 2:1	'A'	5' TO 10'
> 2:1	'C'	5'

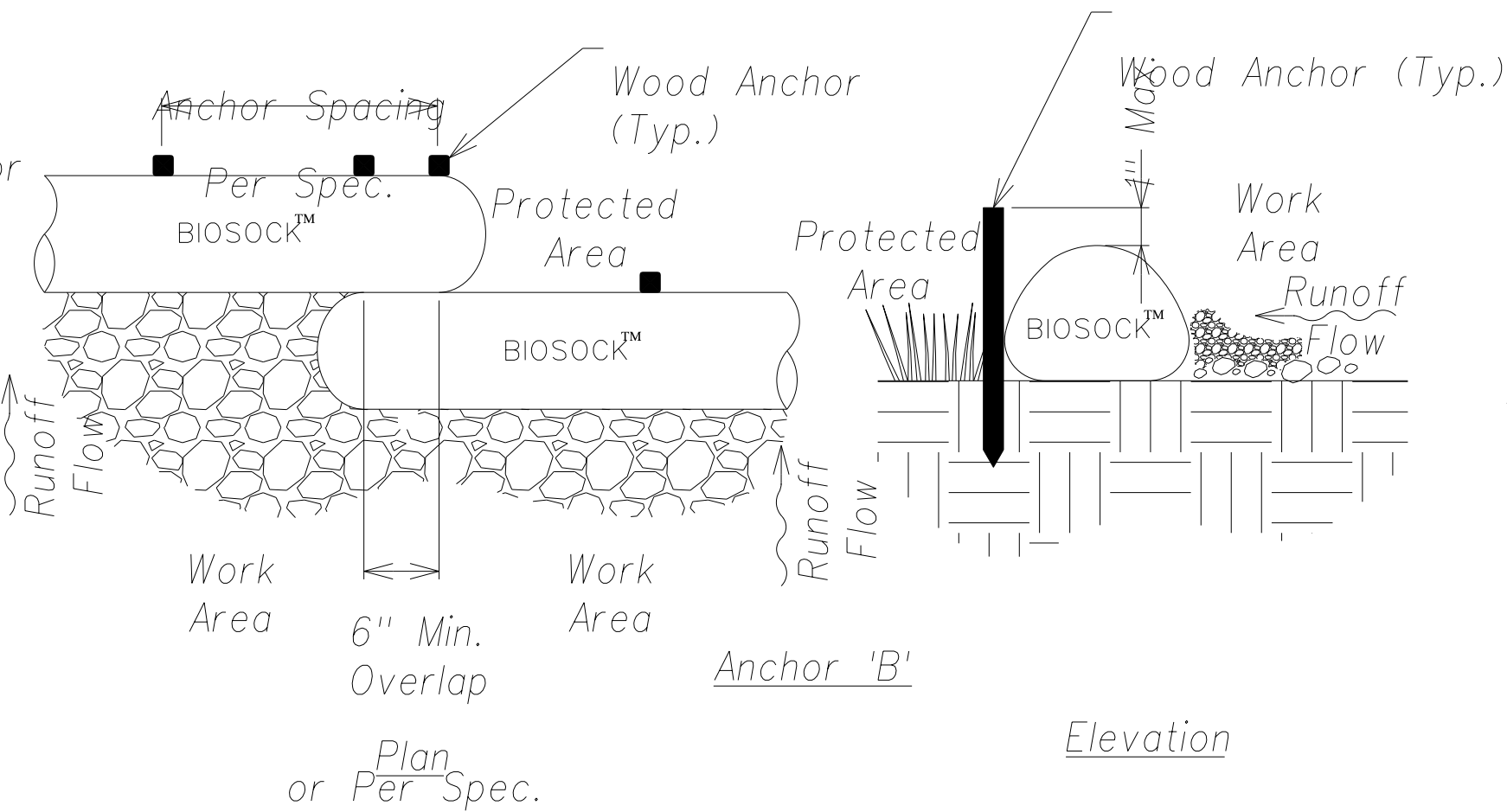
Note:
Install Per Anchor
Method A, B, C
Or Per Spec.

Biosock Compost Filter Sock (12 Inch Dia.)
Not To Scale



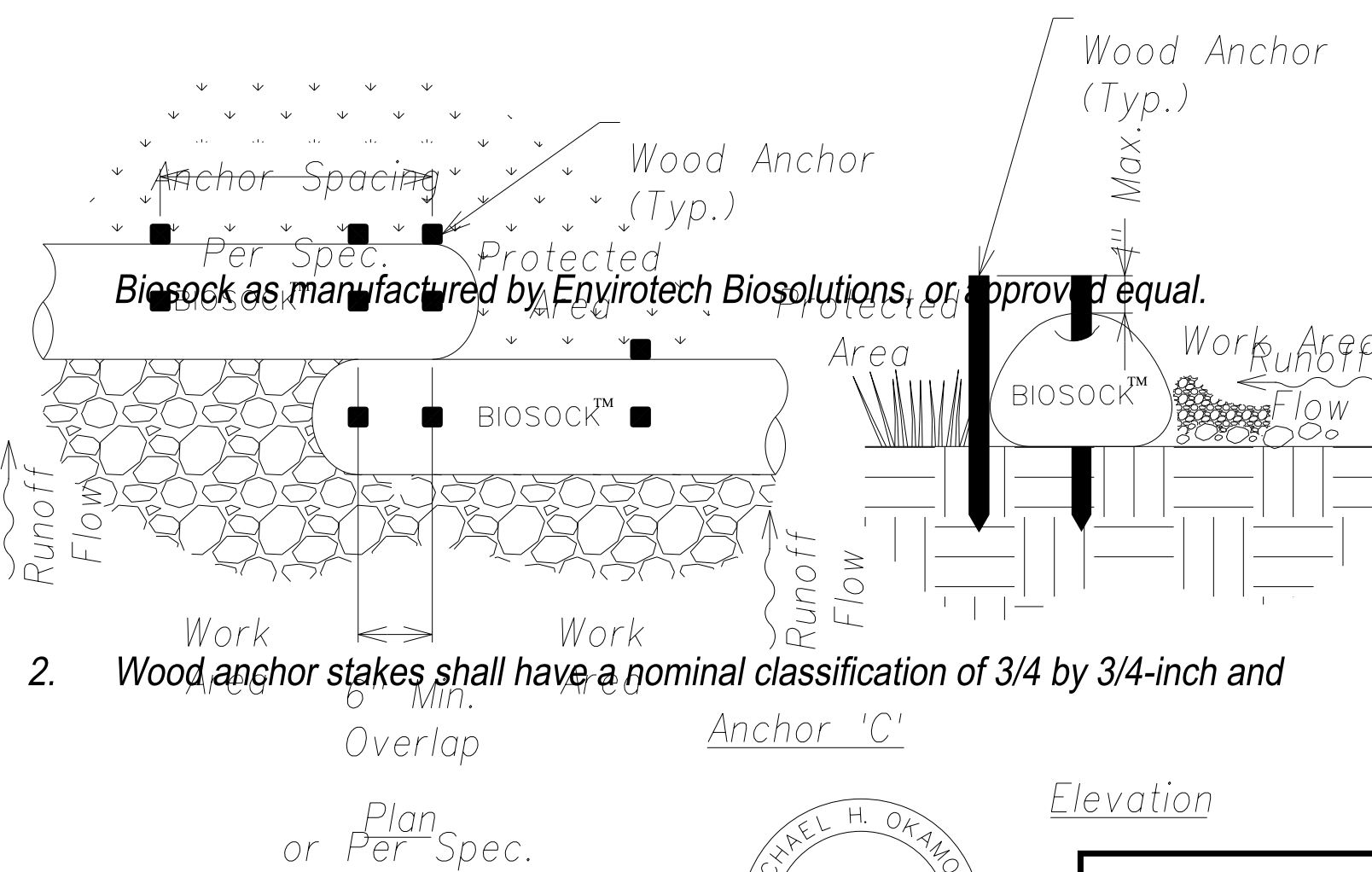
Anchor 'A'

Elevation



Anchor 'B'

Elevation



Anchor 'C'

Elevation

project drawings, or as specified by the Engineer. Compost filter socks shall be

2. Wood anchor stakes shall have a nominal classification of 3/4 by 3/4-inch and

minimum length of 16 inches. Larger sized wood anchor stakes may be installed at

SURVEY PLOTTED BY	DATE
DRAWN BY	
DESIGNED BY	
QUANTITIES BY	
CHECKED BY	
ORIGINAL PLAN	
NOTE BOOK	
No.	

Biosock Compost Filter Sock Anchor Methods
Not To Scale



THIS WORK WAS PREPARED BY ME
IN CONNECTION WITH THE
CONSTRUCTION OF THIS PROJECT
AND WILL BE UNDER MY OBSERVATION.

Signature
April 30, 2014
Expiration Date
Of The License

STATE OF HAWAII
DEPARTMENT OF TRANSPORTATION
HIGHWAYS DIVISION

EROSION CONTROL DETAILS

PHASE 1 - KAUMUALI'I HIGHWAY
LIHU'E MILL BRIDGE TO RICE STREET
PHASE 1 - HO'OMANA ROAD

Scale: As Shown
Date: December 4, 2012

SHEET No. C-18 OF 50 SHEETS