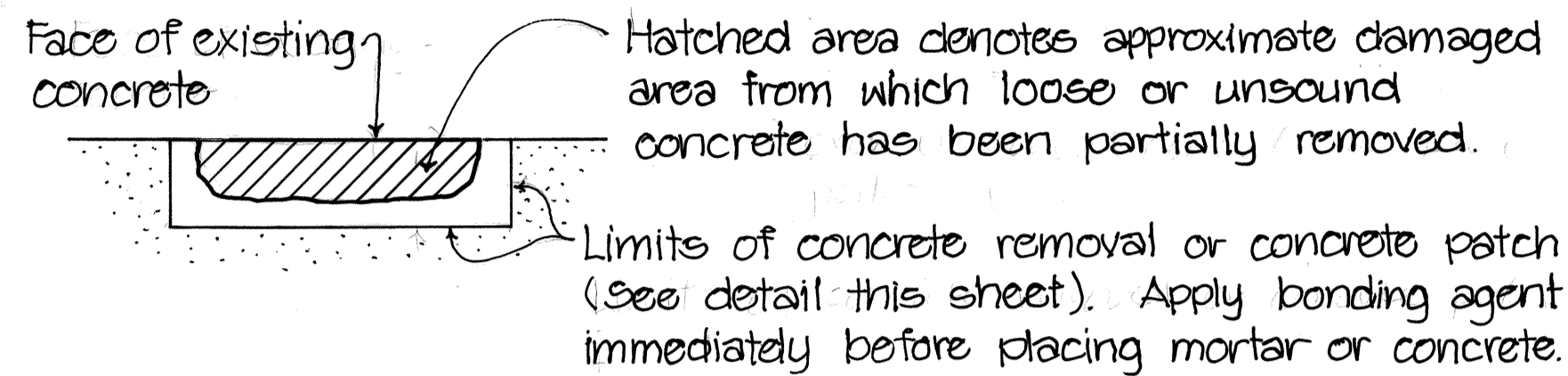


# GENERAL NOTES:

## REPAIR NOTES:

- 1 - All deteriorated, damaged, cracked, spalled, honeycombed concrete or concrete over rusted reinforcing bars shall be removed as shown and repaired with hand-placed mortar or shotcrete.
- 2 - Provide min. 2" conc. over reinforcement or welded wire fabric. See specifications for welded wire fabric requirements.
- 3 - Reinforcing bars that have rusted more than 25% of their original cross sectional area shall be strengthened as shown on the "Repair Splice Detail," this sheet.
- 4 - Efflorescence shall be inspected and repaired as directed by the Engineer.
- 5 - The Engineer shall determine all areas to be repaired and the limits of repair at each area.
- 6 - Apply Hydrozo Clear 16 Waterproofing or equivalent to repaired areas as approved by the Engineer. Application shall be according to the Manufacturer's recommendations.



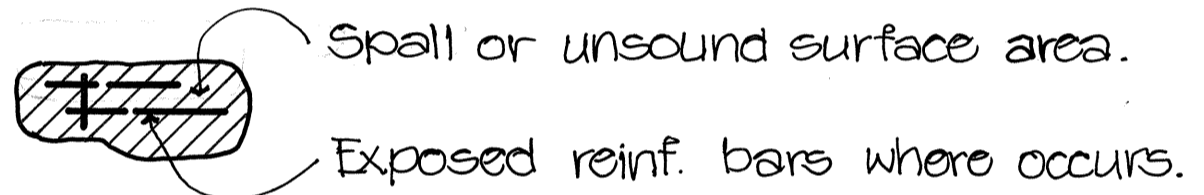
## GENERAL:

- 1 - All reinforcing steel to be ASTM A615 Grade 40.
- 2 - All welding shall be done in accordance with the current edition of the Reinforcing Steel Welding Code AWS D1.4.

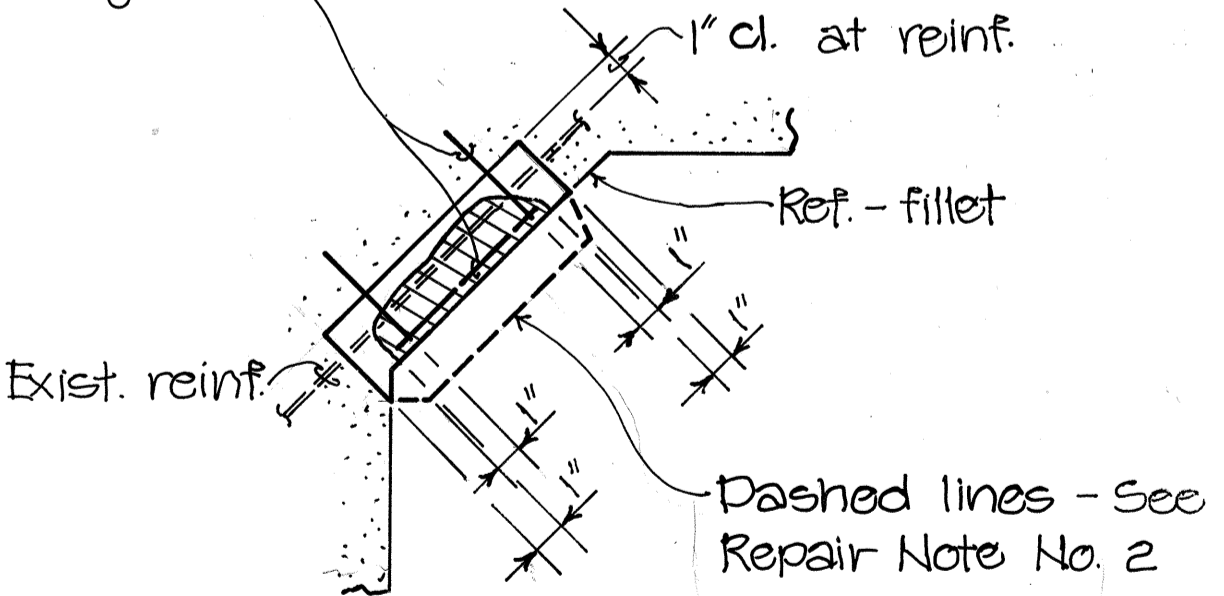
**INCIDENTAL ITEMS:** The following items shall be considered incidental to the various pay items of repair and will not be paid for separately.

- 1 - Bolts and other miscellaneous hardware including hot-dipped zinc-coating and welded wire fabric.
- 2 - Cleaning of all exposed, corroded reinforcing steel to sound metal.
- 3 - Reinforcing bars of repair splice for strengthening corroded bars.
- 4 - Furnishing and application of Hydrozo Clear 16 Waterproofing Material.

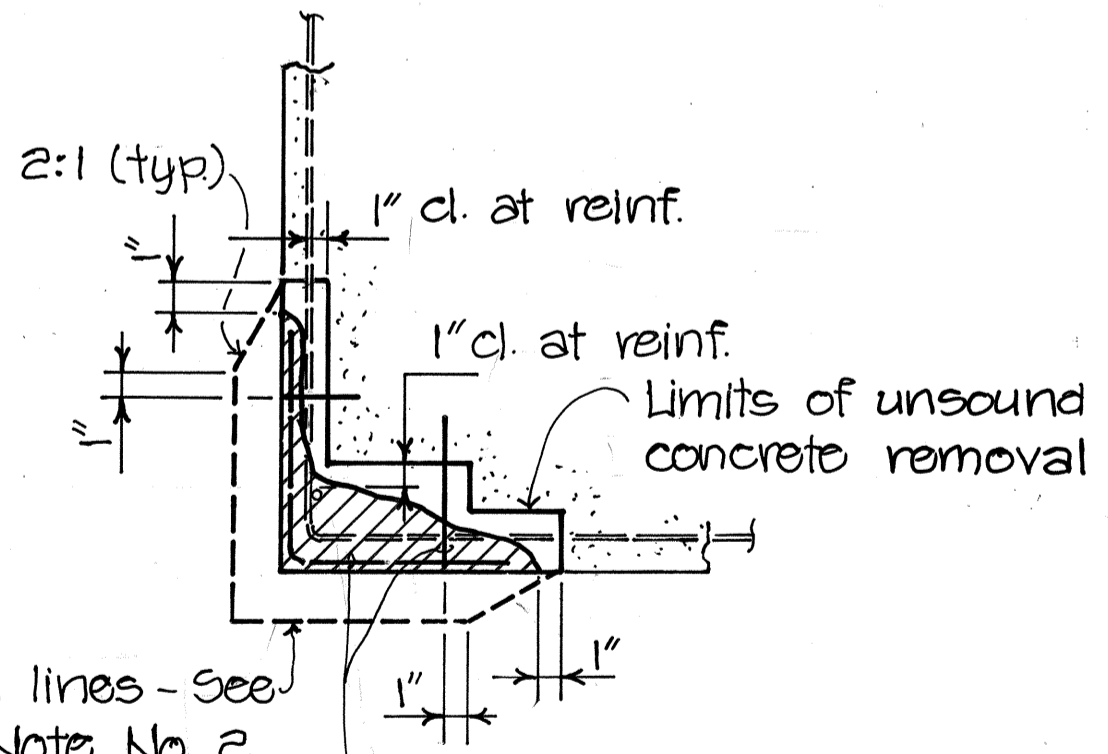
## SYMBOLS:



Welded wire fabric, 2x2-W1.4 x W1.4 and 1/4"  $\phi$  hooked expansion bolts 12" o.c. max. ea. direction, for areas 1 sq. ft. or greater and as directed by the Engineer.

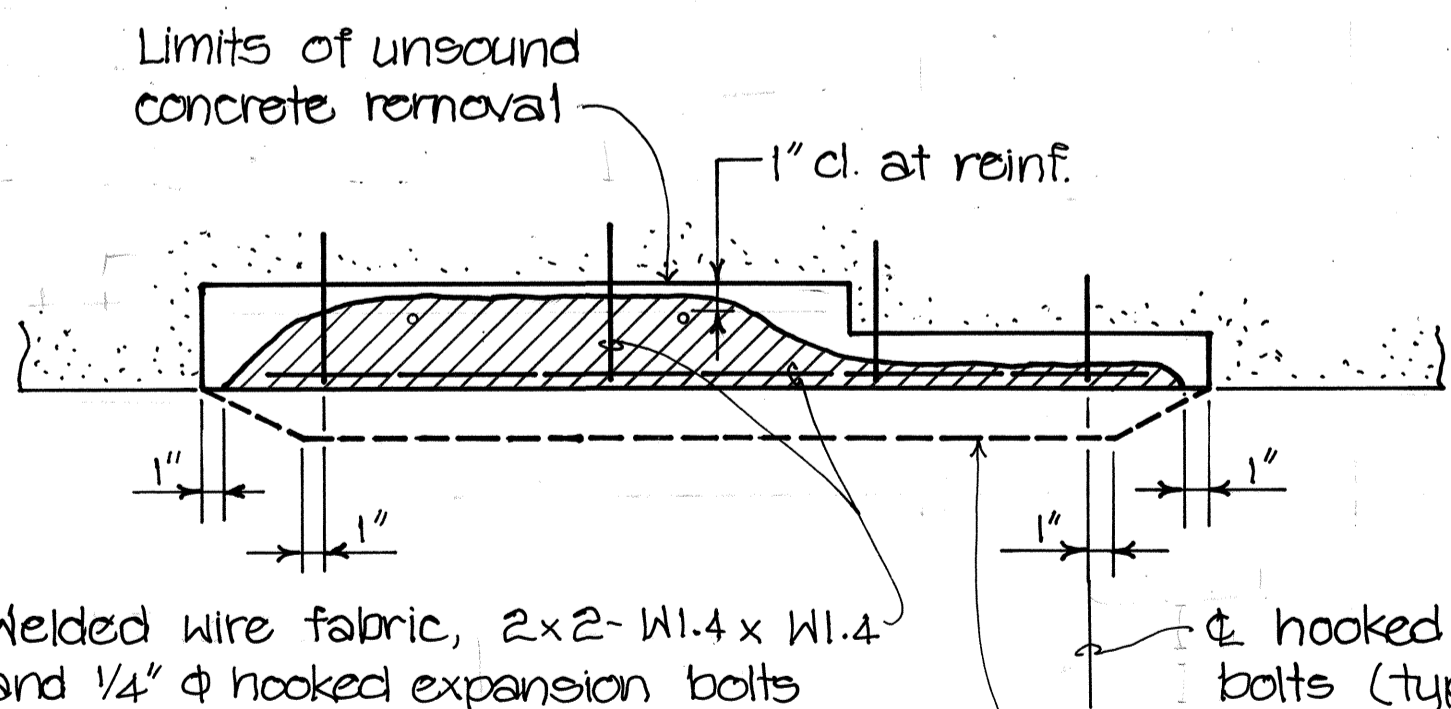


AT FILLET



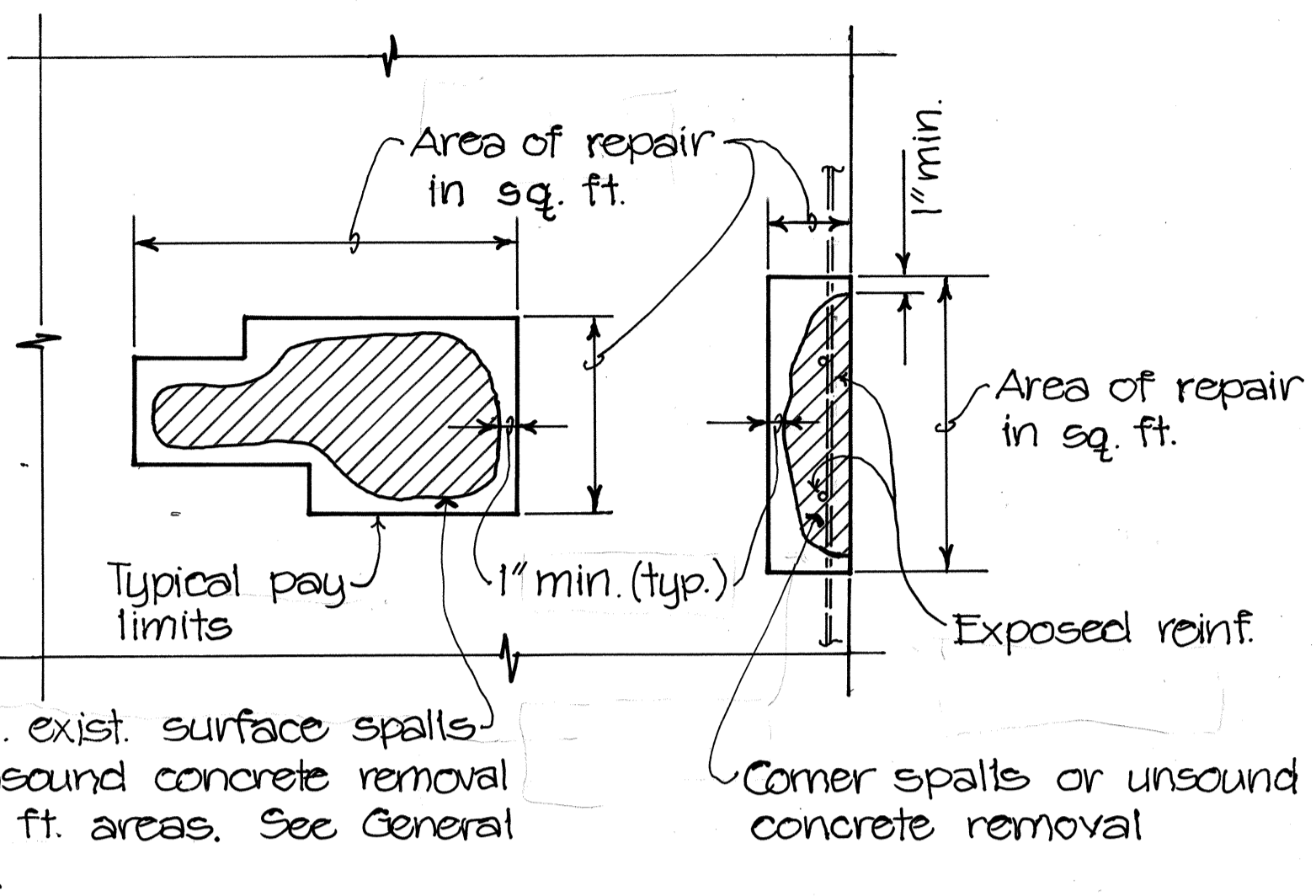
Welded wire fabric, 2x2-W1.4 x W1.4 and 1/4"  $\phi$  hooked expansion bolts 12" o.c. max. ea. direction, for areas 1 sq. ft. or greater and as directed by the Engineer.

AT CORNER



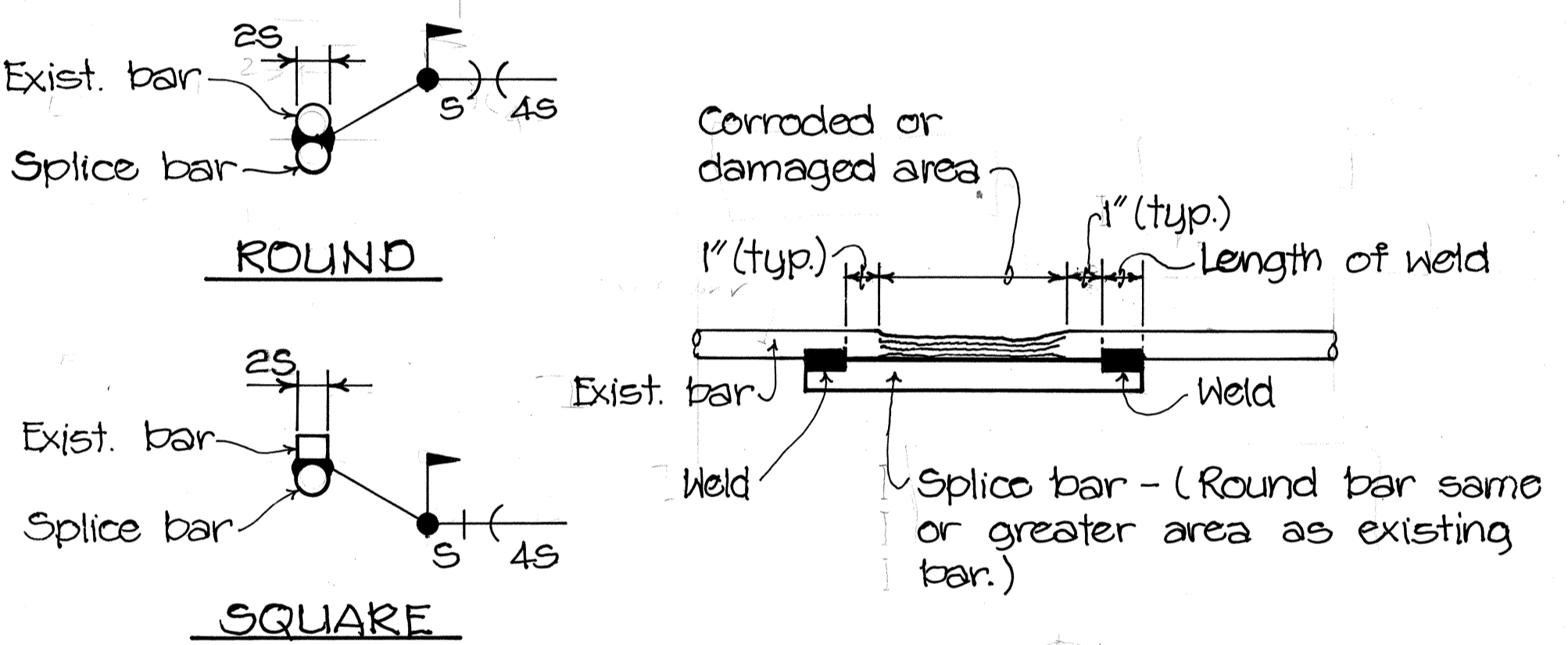
Welded wire fabric, 2x2-W1.4 x W1.4 and 1/4"  $\phi$  hooked expansion bolts 12" o.c. max. ea. direction, for areas 1 sq. ft. or greater and as directed by the Engineer.

AT SURFACE



## PLAN OR ELEVATION

Not to Scale



## TYPICAL REINFORCING BAR

### REPAIR SPLICE DETAIL

Not to Scale

## TYPICAL REPAIRS AT CONCRETE SPALLS

Not to Scale

STATE OF HAWAII  
DEPARTMENT OF TRANSPORTATION  
HIGHWAYS DIVISION

GENERAL NOTES  
AND DETAILS

KAUIMUALII HIGHWAY REPAIR SPALLS  
Waimea, Hanalei, and Lihue Bridges  
PROJECT NO. 50BC-01-92M

Scale: None Date: April 1992

SHEET No. 1 OF 1 SHEETS