

FED. ROAD DIST. NO.	STATE	PROJ. NO.	FISCAL YEAR	SHEET NO.	TOTAL SHEETS
HAWAII	HAW.	5080186M	1986	6	8



CW20-1a 48" x 48"



CW20-2d 48" x 48"



CW20-3b 48" x 48"



CW20-4d 48" x 48"



CW20-5d(L) 48" x 48"



CW20-7c 48" x 48"



CW21-1 30" x 30"



CW21-2 30" x 30"



CW21-3 36" x 36"



CW21-4 36" x 36"



CW21-5 30" x 30"



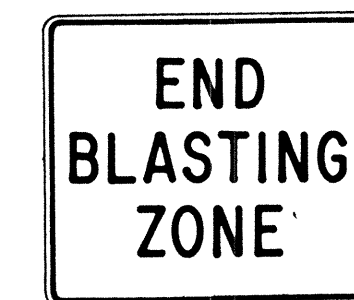
CW21-6 30" x 30"



CW22-1b 48" x 48"



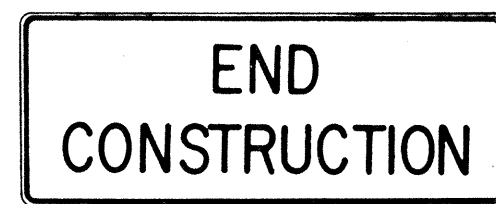
CW22-2 42" x 36"



CW22-3 42" x 36"



CG20-1(5) 60" x 36"



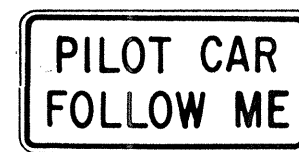
CG20-2 60" x 24"



CM4-9(R) 30" x 24"



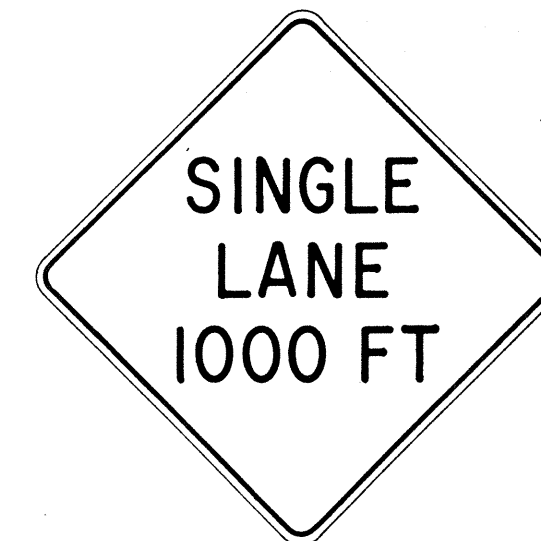
CM4-10(R) 48" x 18"



CG20-4 36" x 18"



CW23-1 36" x 36"



CW23-2b 48" x 48"



CW23-3(R) 48" x 48"

GENERAL NOTES

- Sign details shall conform to the FHWA publications "Manual on Uniform Traffic Control Devices for Streets and Highways," 1971, and "Standard Highway Signs," 1972, and as amended.
- All construction signs shall be reflectorized.
- All construction signs shall have 3/8" bolt holes drilled at appropriate locations.
- Numerals in () indicates numerals to be inserted for sign message. (R) or (L) indicates right or left.
- For "CW" series signs, suffixes a,b,c and d are as follows:
a-1500 FT, b-1000 FT,
c-500 FT and d-AHEAD.

NO.	REVISION	APPROVED BY	DATE
1	Supersedes Sht. DT 104 Approved 12-30-69	H.T.	3/23/72
2	Revised General Note 1	H.T.	10/16/74
3	Revised General Note 2	M.H.	9-16-75
4	Revised General Note 2 and sign CG20-1(5)	H.T.	9-14-76

APPROVAL RECOMMENDED:
Erich Tanaka 3/21/72
TRAFFIC ENGINEER DATE

APPROVED:
Shirley S. S. S. 3/23/72
ASSISTANT CHIEF, ENGINEERING DATE

STATE OF HAWAII
DEPARTMENT OF TRANSPORTATION
HIGHWAYS DIVISION

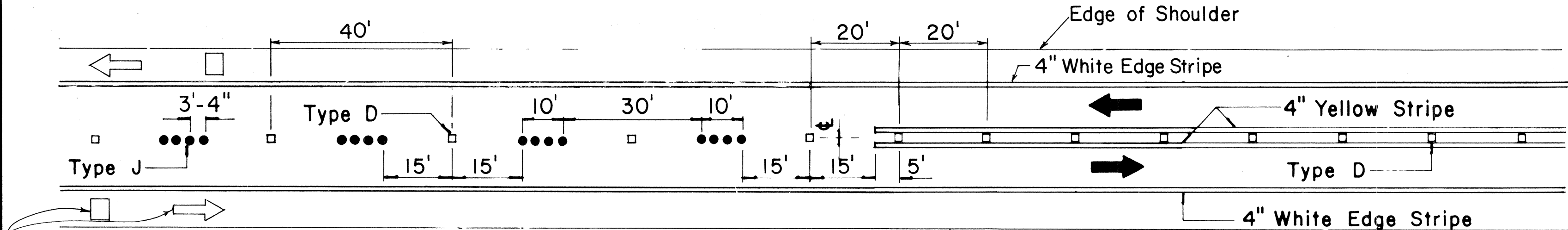
STANDARD DETAILS CONSTRUCTION SIGNS

NOT TO SCALE

SHEET No. 1 OF 3 SHEETS DT 104

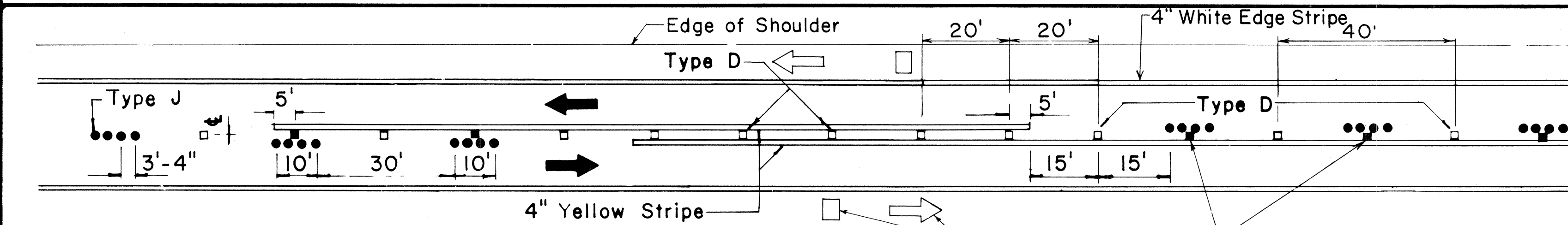
ORIGINAL PLAN	SURVEY PLOTTED BY	DATE
NOTE BOOK	DRAWN BY	
	DESIGNED BY	
	QUANTITIES BY	
	CHECKED BY	

FED. ROAD DIST. NO.	STATE	PROJ. NO.	FISCAL YEAR	SHEET NO.	TOTAL SHEETS
HAWAII	HAW.	50B-0186M	1986	7	8



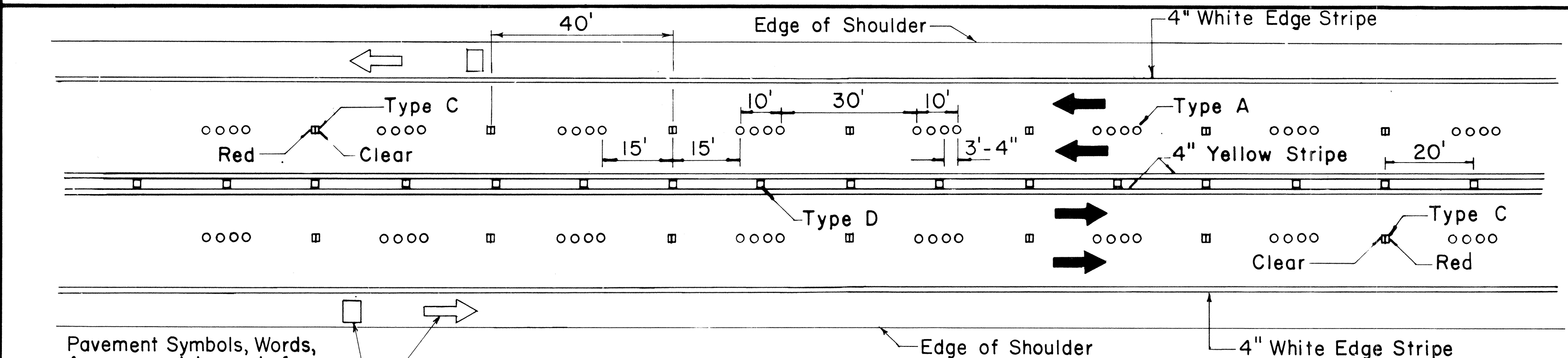
Pavement Symbols, Words, Arrows, and Legends for Bike Route as Required on Plans.

PASSING PERMITTED AND PASSING PROHIBITED

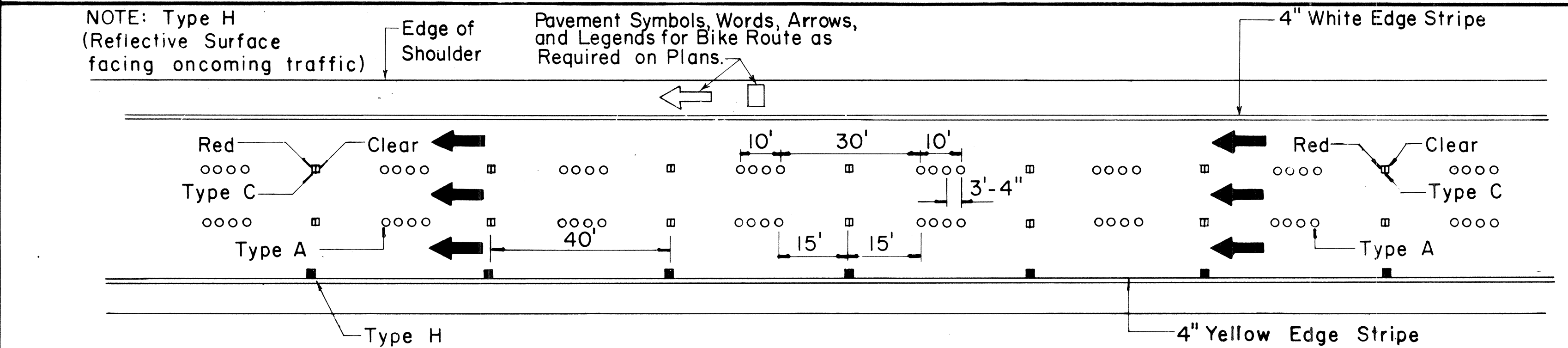


Pavement Symbols, Words, Arrows, and Legends for Bike Route as Required on Plans.

PASSING PROHIBITED ZONES

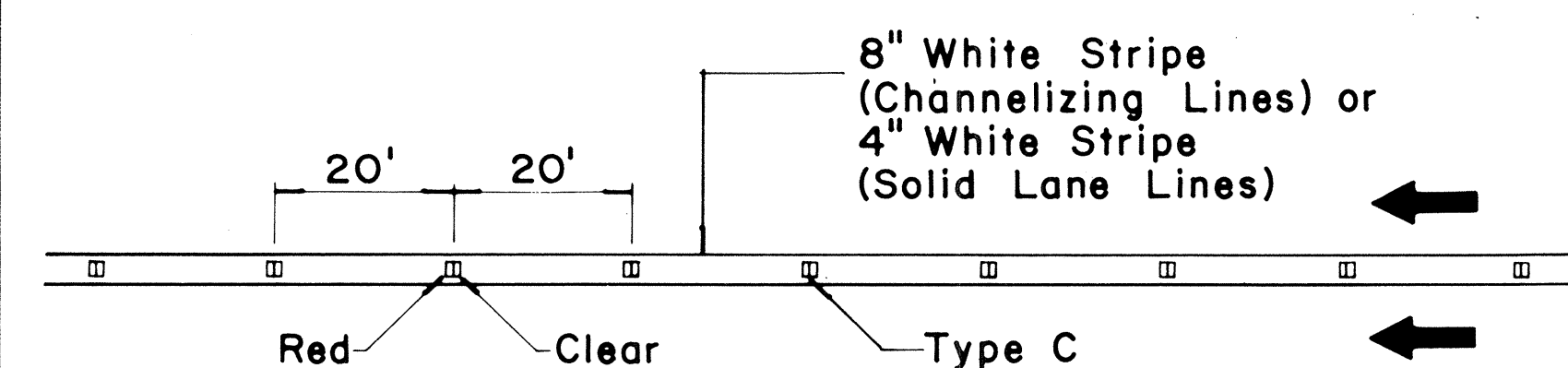


Pavement Symbols, Words, Arrows, and Legends for Bike Route as Required on Plans.

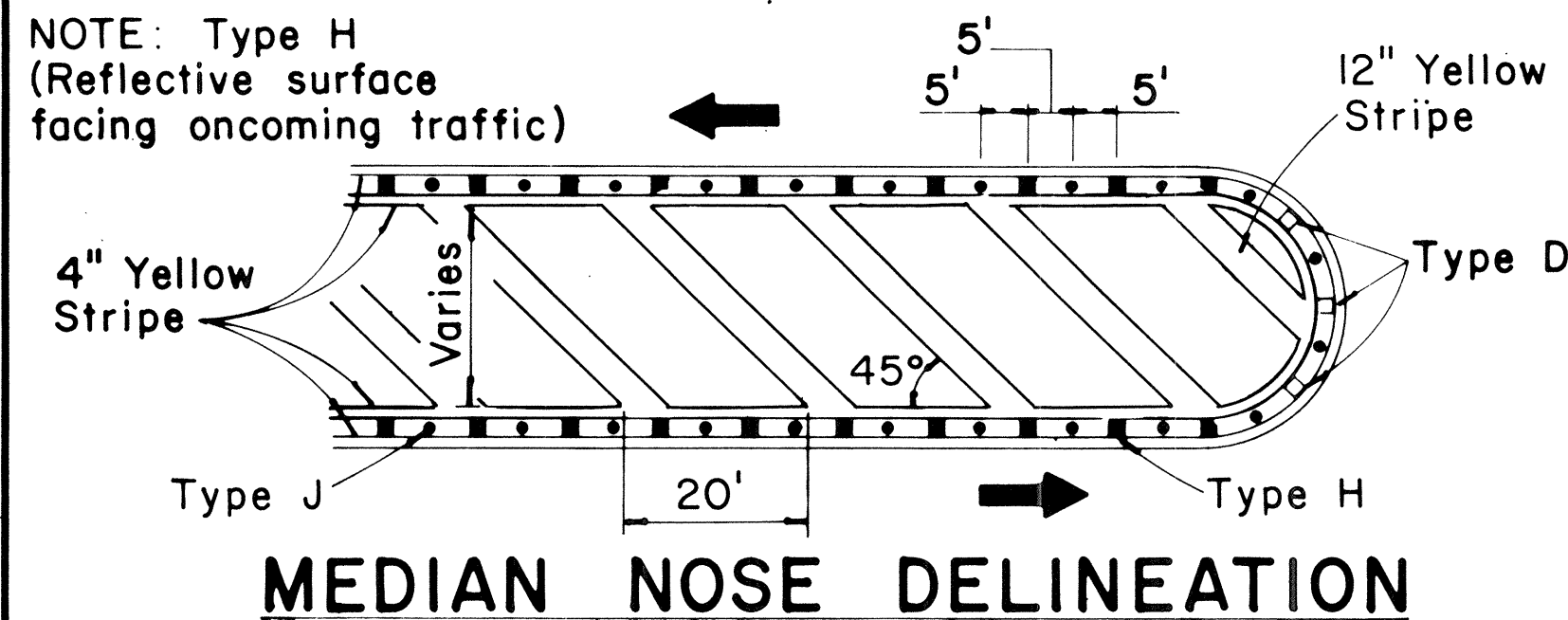


NOTE: Type H (Reflective Surface facing oncoming traffic)

Pavement Symbols, Words, Arrows, and Legends for Bike Route as Required on Plans.



CHANNELIZING LINES OR SOLID LANE LINES



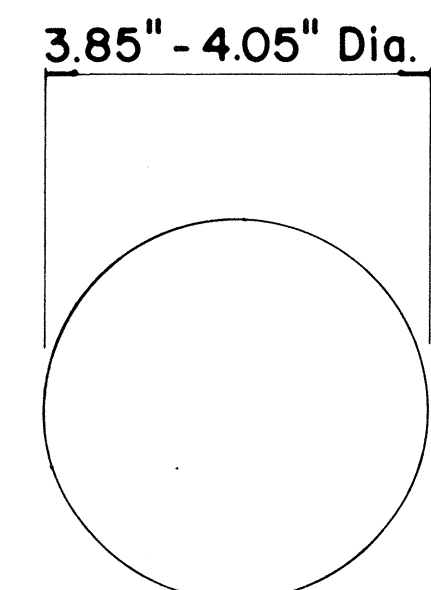
NOTE: Type H (Reflective surface facing oncoming traffic)

TWO - LANE

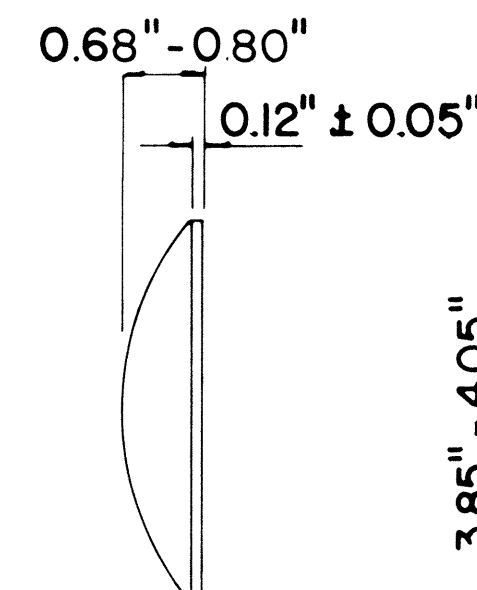
MULTI - LANE

DIVIDED HIGHWAY AND FREEWAY

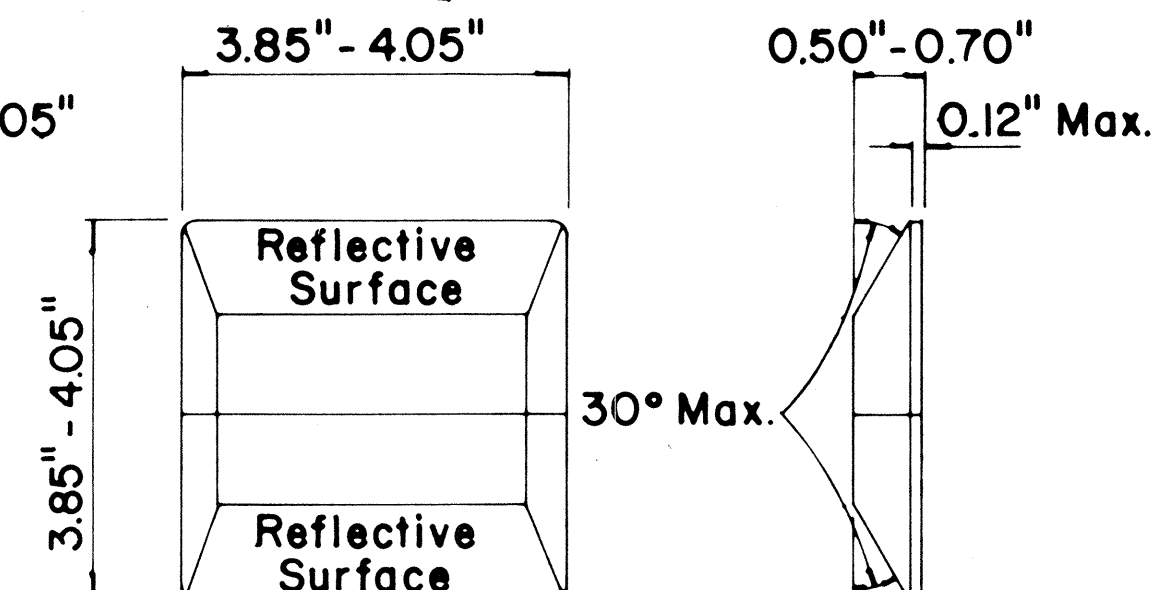
MISCELLANEOUS



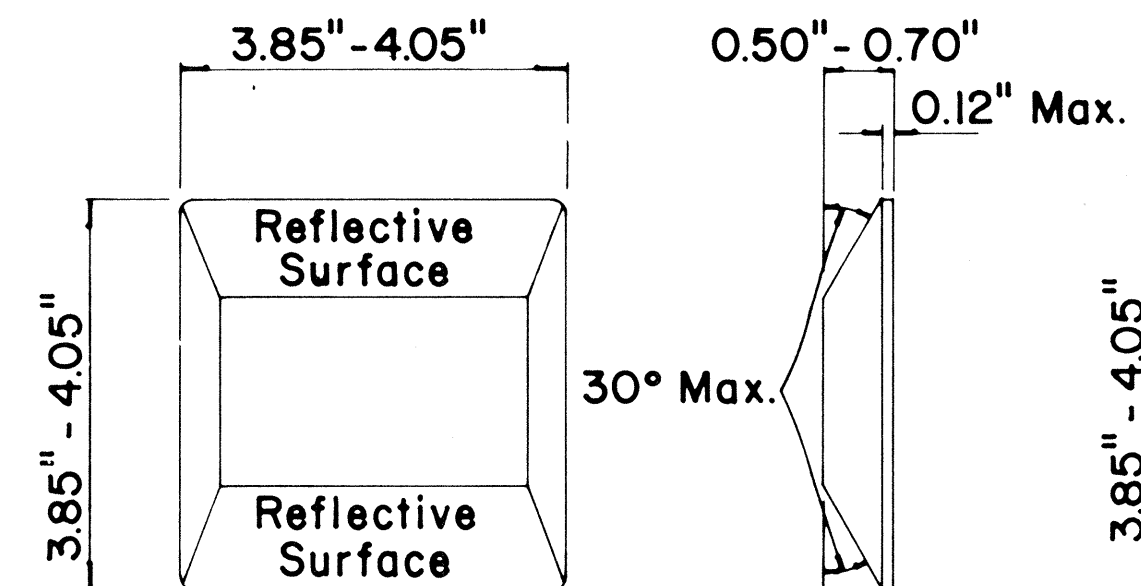
TYPE A
NON - REFLECTIVE WHITE MARKER



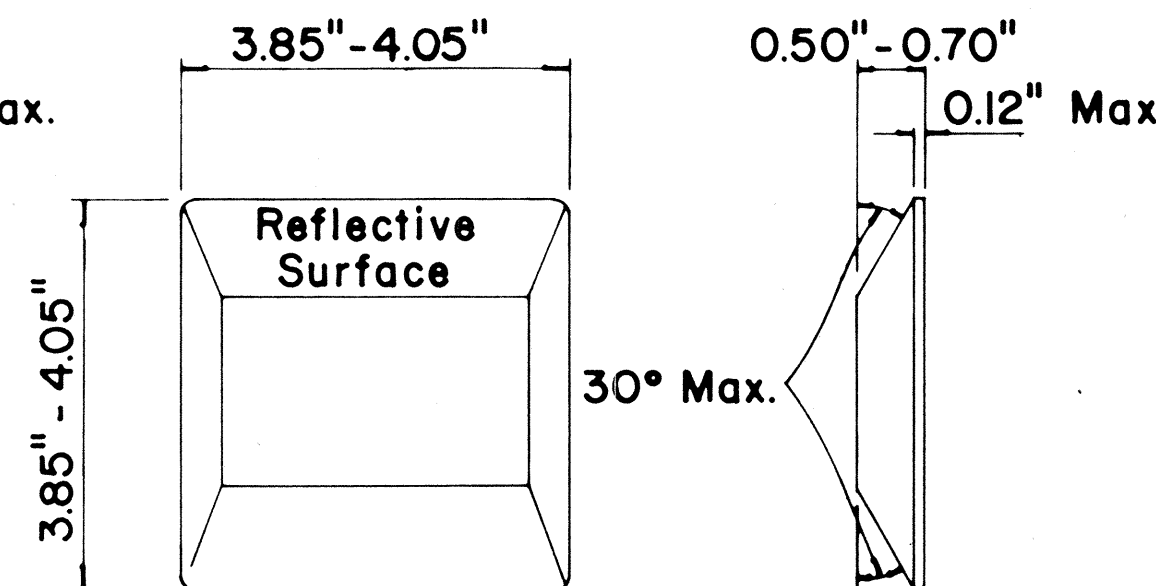
TYPE J
NON - REFLECTIVE YELLOW MARKER



TYPE C
RED - CLEAR REFLECTIVE MARKER



TYPE D
TWO - WAY YELLOW REFLECTIVE MARKER



TYPE H
ONE - WAY YELLOW REFLECTIVE MARKER

GENERAL NOTES

- Pavement marking and striping shall conform to the latest "Manual on Uniform Traffic Control Devices for Streets and Highways," and as amended.
- Layout and installation of pavement marking and striping shall be done by the Contractor. The Contractor shall check the layouts with the Engineer prior to performing work.
- Edge lines shall not be continued through intersections and shall not be broken for driveways unless otherwise shown or directed.

LEGEND

- Type A
- ◻ Type C
- ◻ Type D
- Type H
- Type J

APPROVAL RECOMMENDED:

Erich Tanaka 1/21/78
TRAFFIC ENGINEER DATE

APPROVED:

Herbert J. Zelenka 1/24/78
ASSISTANT CHIEF, ENGINEERING DATE

No.	REVISION	APPROVED BY	DATE
1	Supersedes DT 300 approved 11/18/71.	H.T.	1/24/78
2	Delete Type A Markers from Bike Route Delineation.	H.T.	10/15/79
3	Added General Note 3. Revised left edge stripe.	J.D.	9-28-83

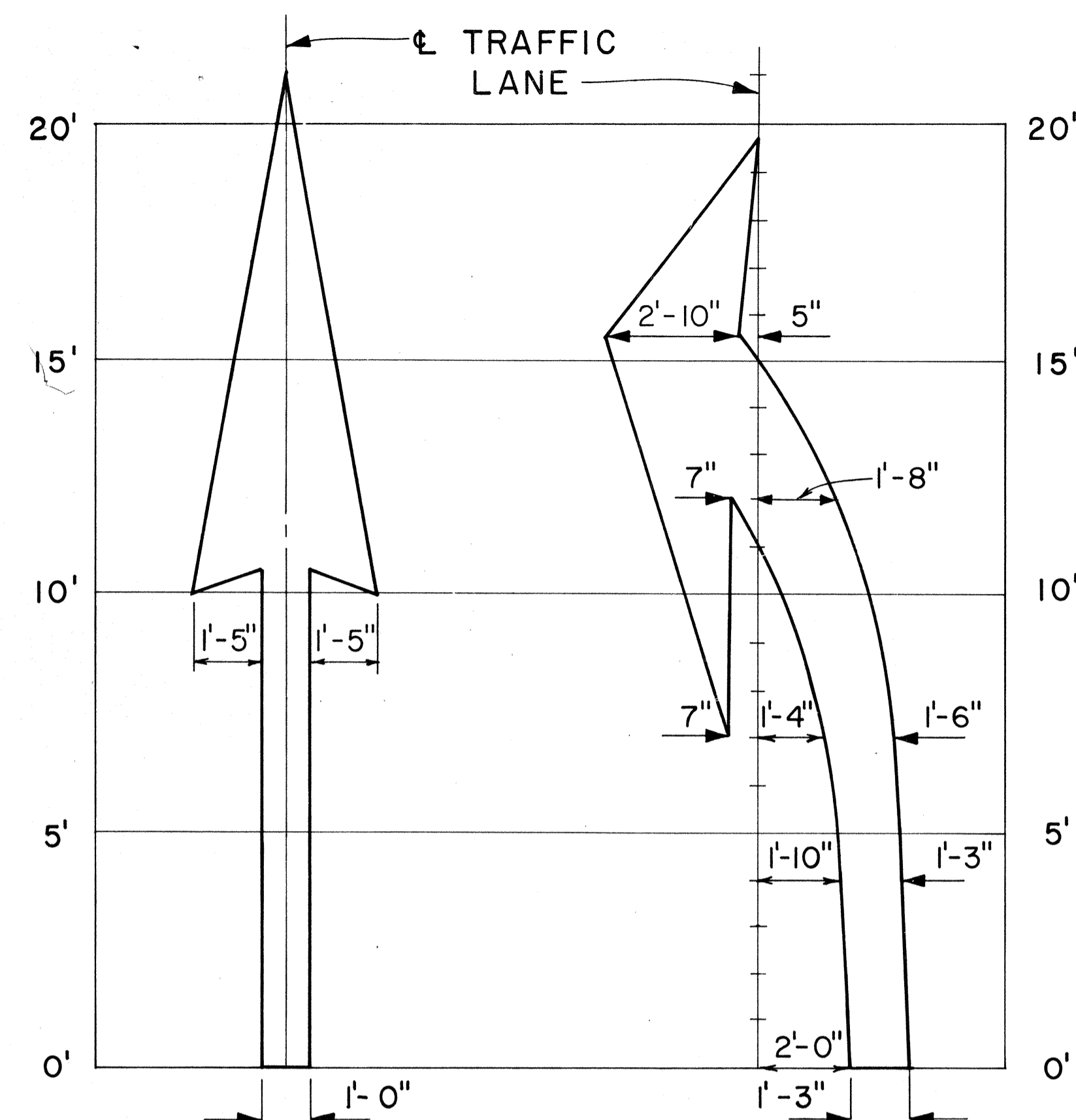
STATE OF HAWAII DEPARTMENT OF TRANSPORTATION HIGHWAYS DIVISION
STANDARD DETAILS RAISED PAVEMENT MARKERS AND STRIPING
Not to Scale July 1978
SHEET No. 2 OF 3 SHEETS DT 300

SURVEY PLOTTED BY	DATE
DRAWN BY	
DESIGNED BY	
NOTED BY	
CHECKED BY	
ORIGINAL PLAN	
NOTE BOOK	
No.	

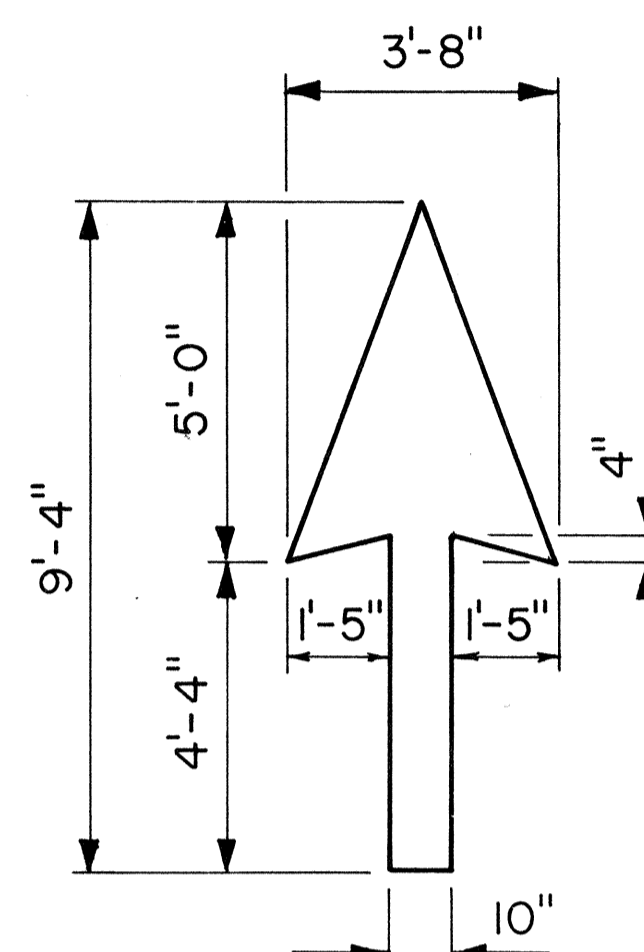
FED. ROAD DIST. NO.	STATE	PROJ. NO.	FISCAL YEAR	SHEET NO.	TOTAL SHEETS
HAWAII	HAW.	50B0186M	1986	8	8

GENERAL NOTES:

1. Pavement marking and striping shall conform to the latest edition of the "Manual on Uniform Traffic Control Devices for Streets and Highways," by the FHWA, and as amended.
2. Layout of pavement markings and striping shall be done by the Contractor. The Contractor shall check layout of markings and striping with the Engineer prior to performing work.
3. For additional pavement marking details, see sheet DT 300.



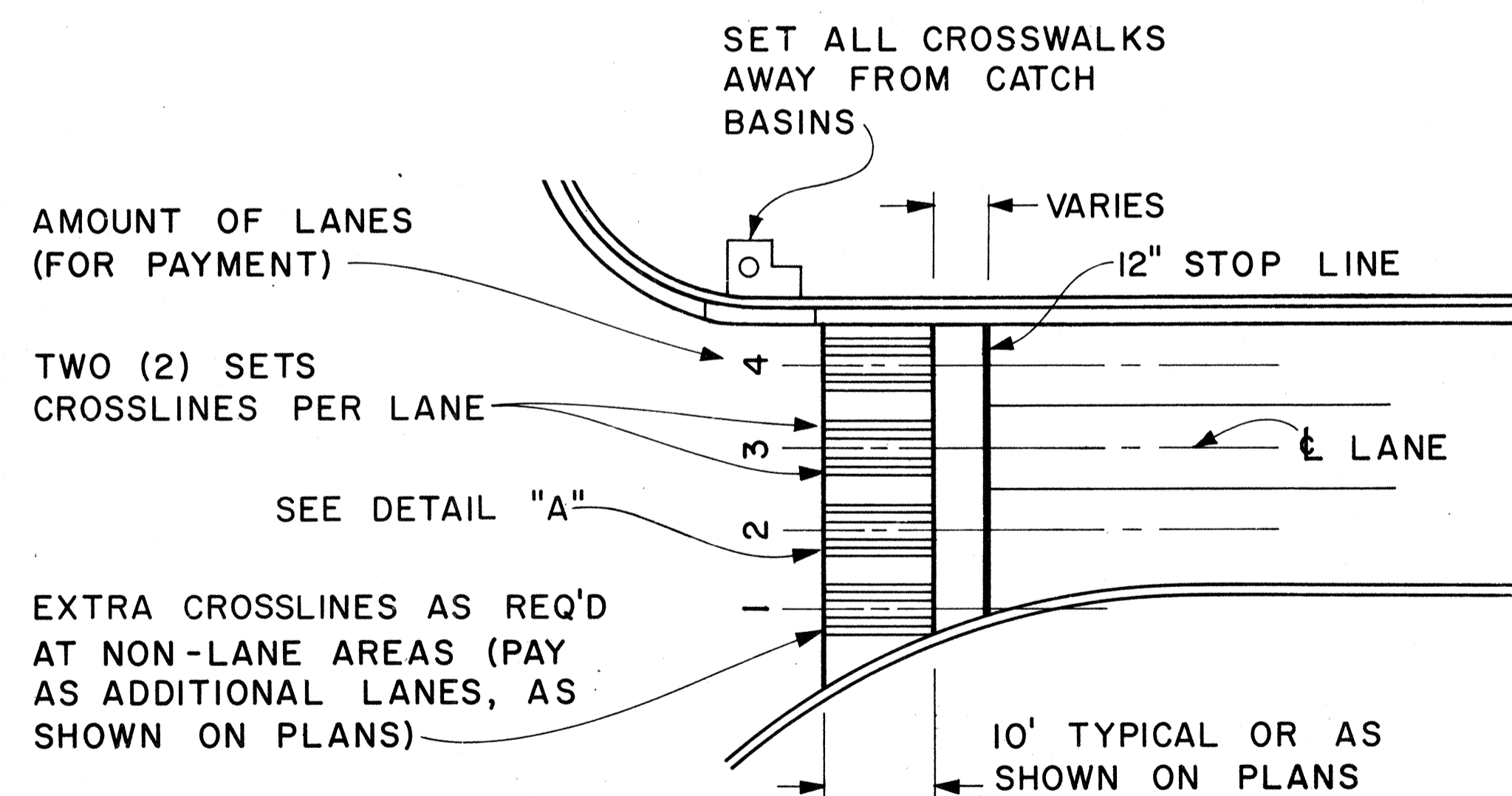
ELONGATED



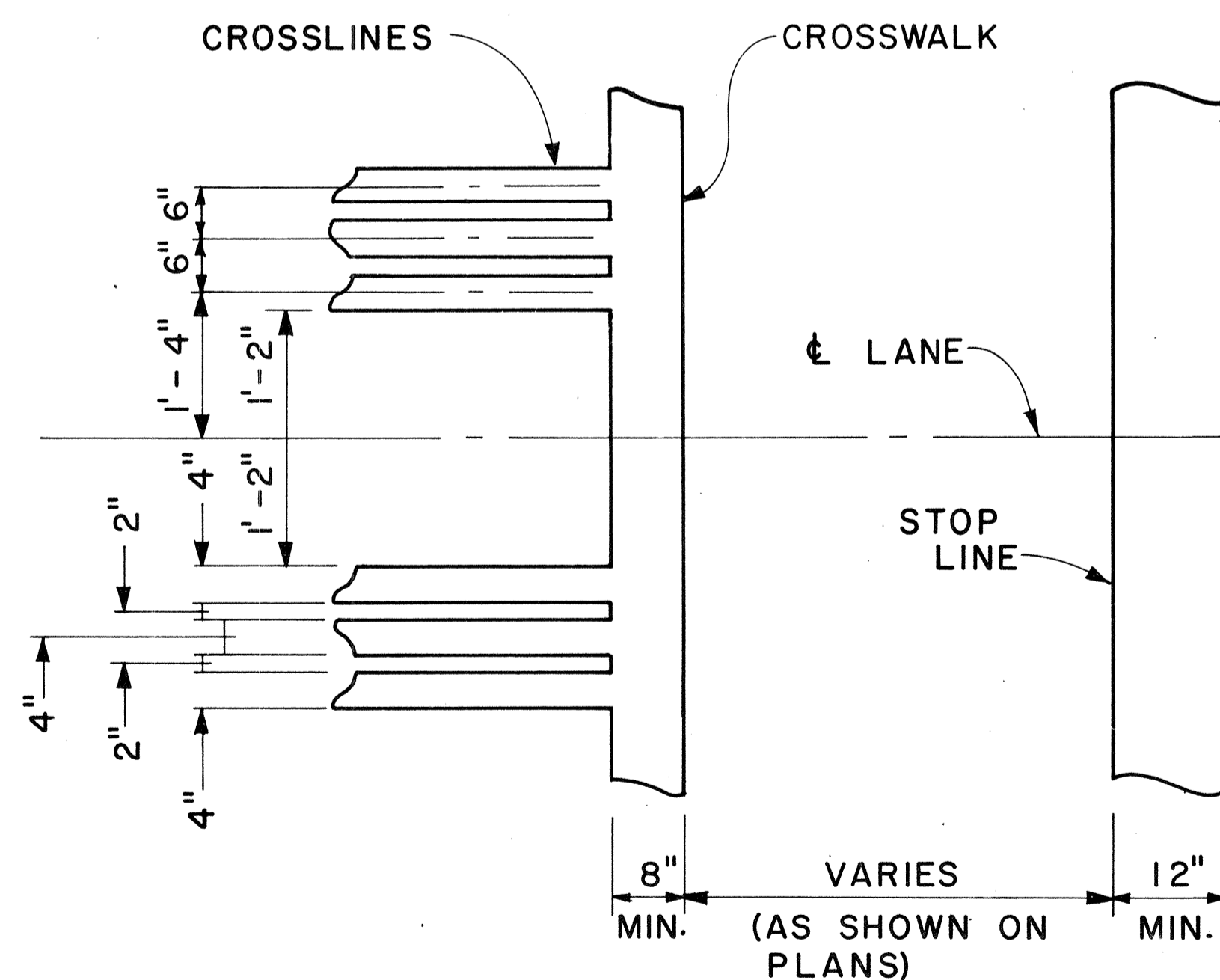
STANDARD

PAVEMENT ARROWS

Scale: 3/8" = 1'



PLAN



DETAIL "A"

CROSSWALK & STOP LINE

Scale: Not to Scale

NO.	REVISION	APPROVED BY	DATE

APPROVAL RECOMMENDED:
E. Ichi Tanaka 5/2/78
 TRAFFIC ENGINEER DATE

APPROVED:
Harold S. Zaksch 5/2/78
 ASSISTANT CHIEF, ENGINEERING DATE

NO.	REVISION	APPROVED BY	DATE

STATE OF HAWAII
 DEPARTMENT OF TRANSPORTATION
 LAND TRANSPORTATION FACILITIES DIVISION

STANDARD DETAILS

MISCELLANEOUS
 PAVEMENT MARKINGS

Scale: As Shown Date: March, 1978
 SHEET No. 3 OF 3 SHEETS DT 306