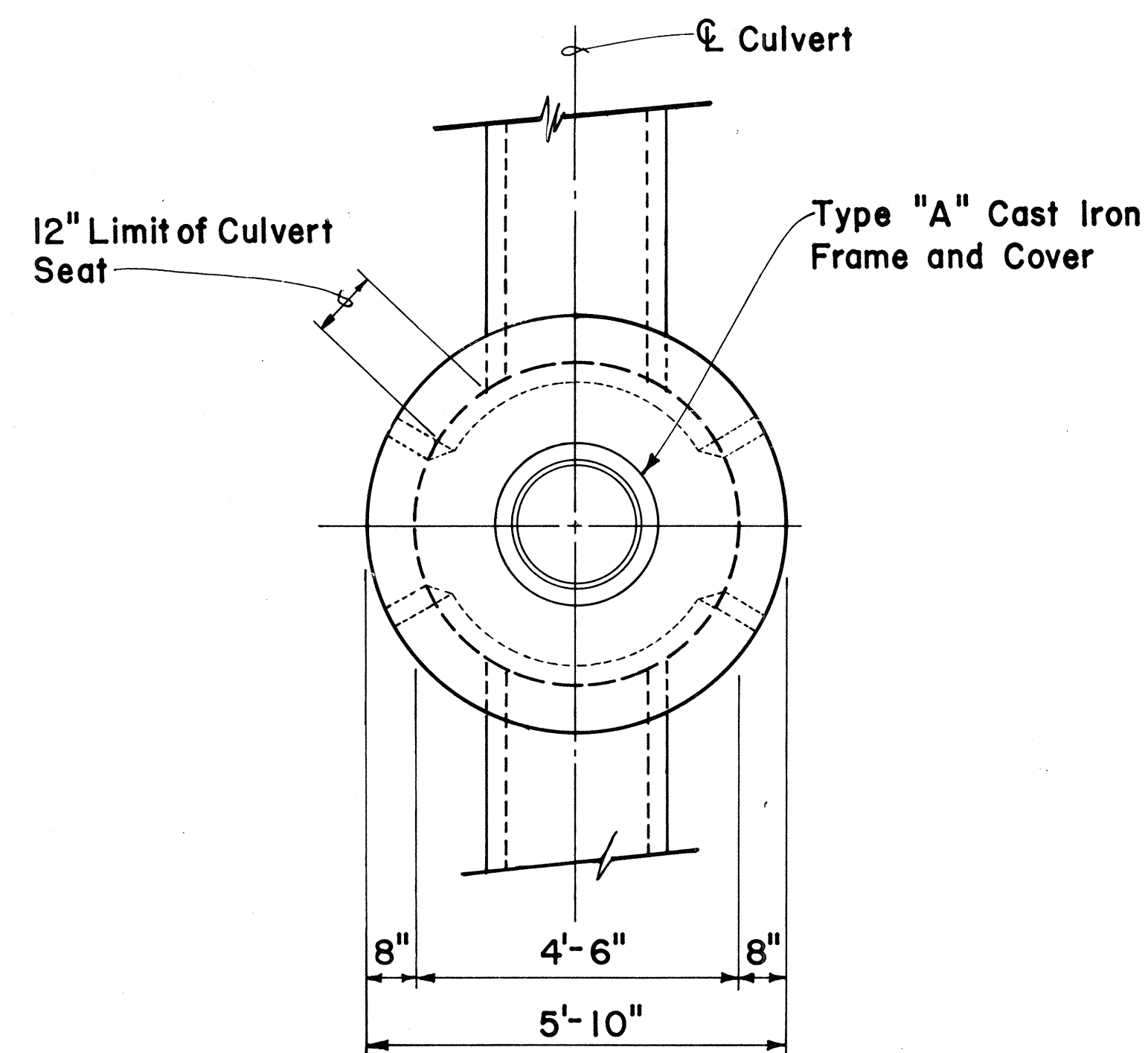
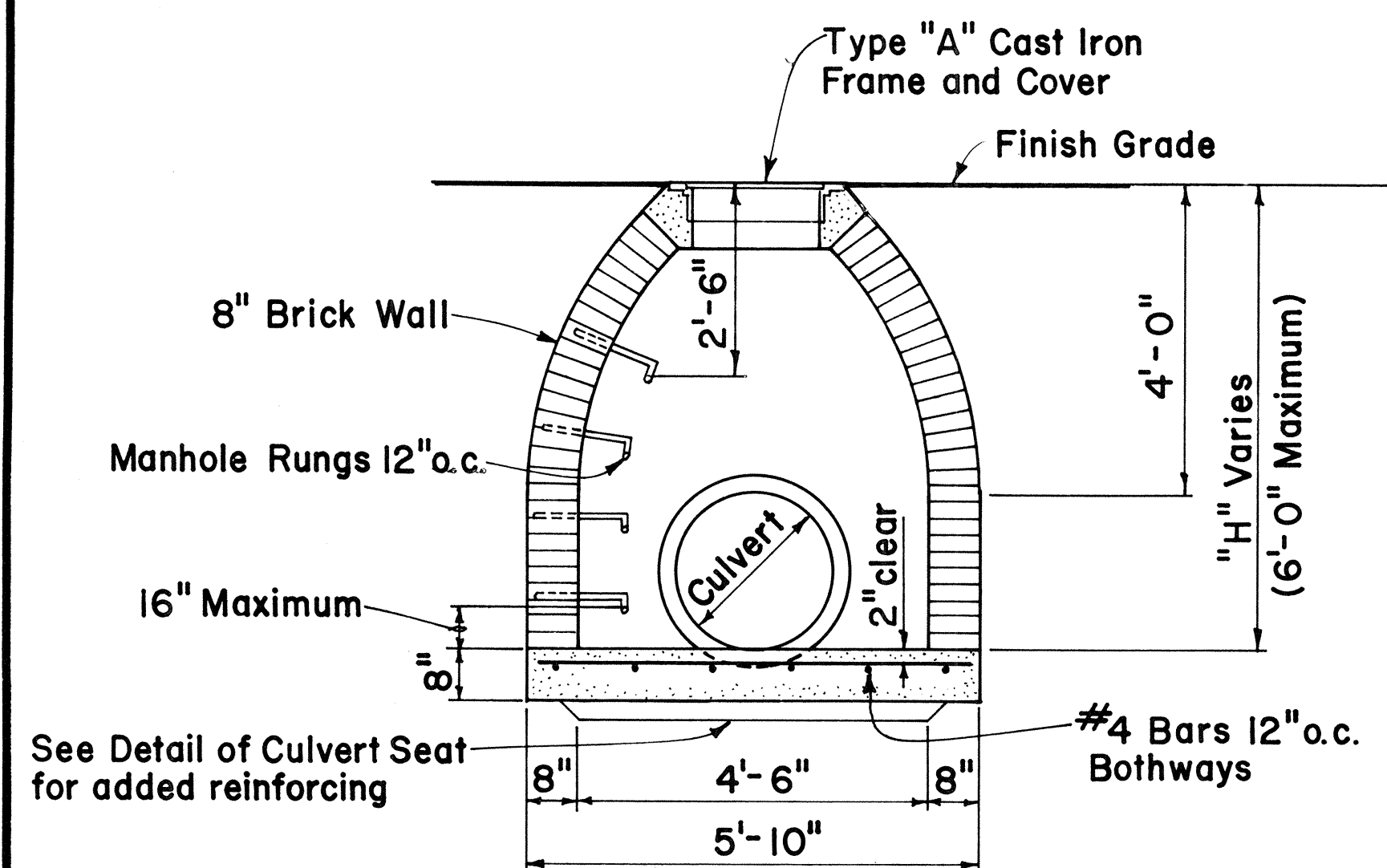


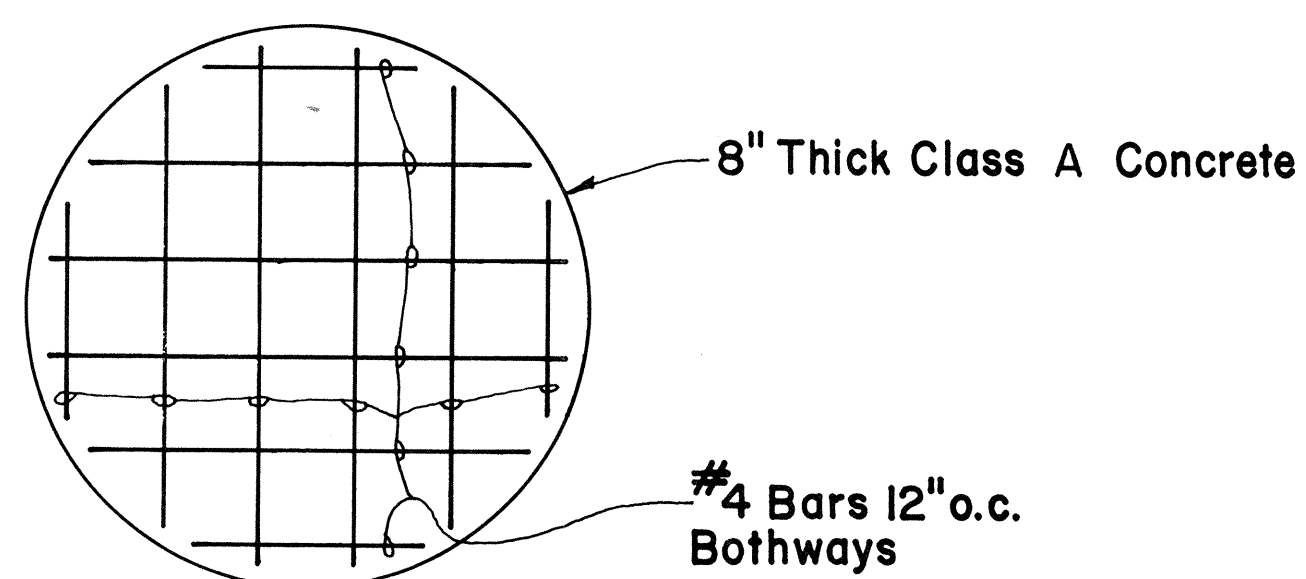
FED. ROAD DIST. NO.	STATE	FED. AID PROJ. NO.	FISCAL YEAR	SHEET NO.	TOTAL SHEETS
HAWAII	HAW.	DP-050-115	1982	4	5



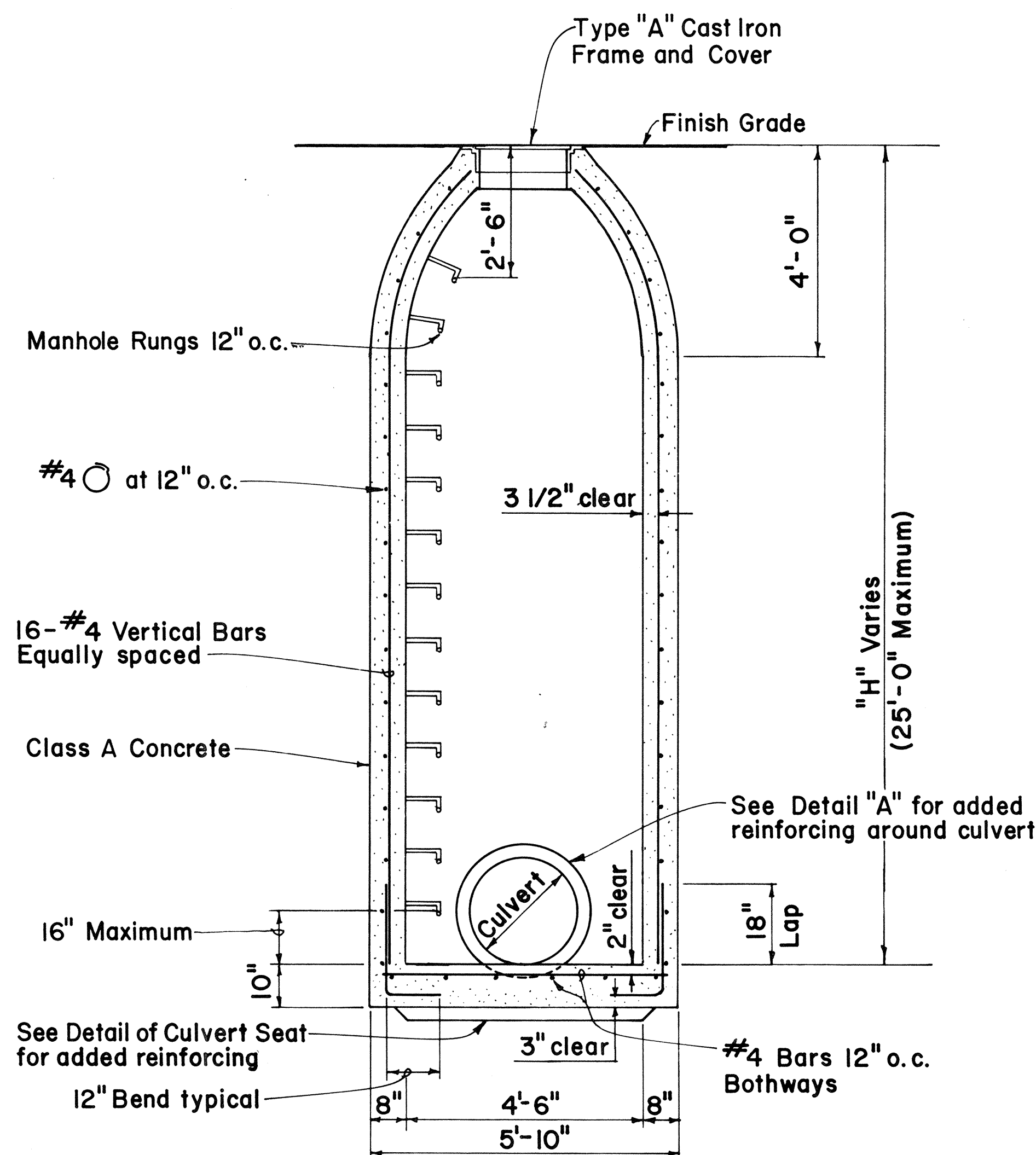
**PLAN TYPE "D" OR "E"
STORM DRAIN MANHOLE**



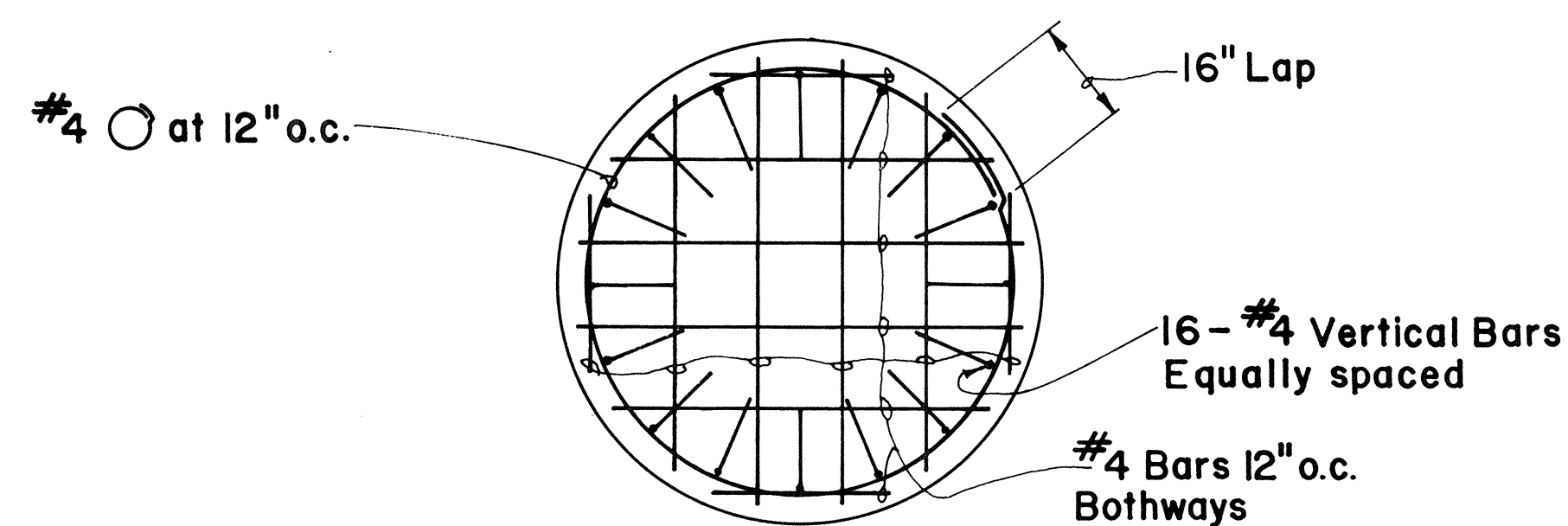
ELEVATION



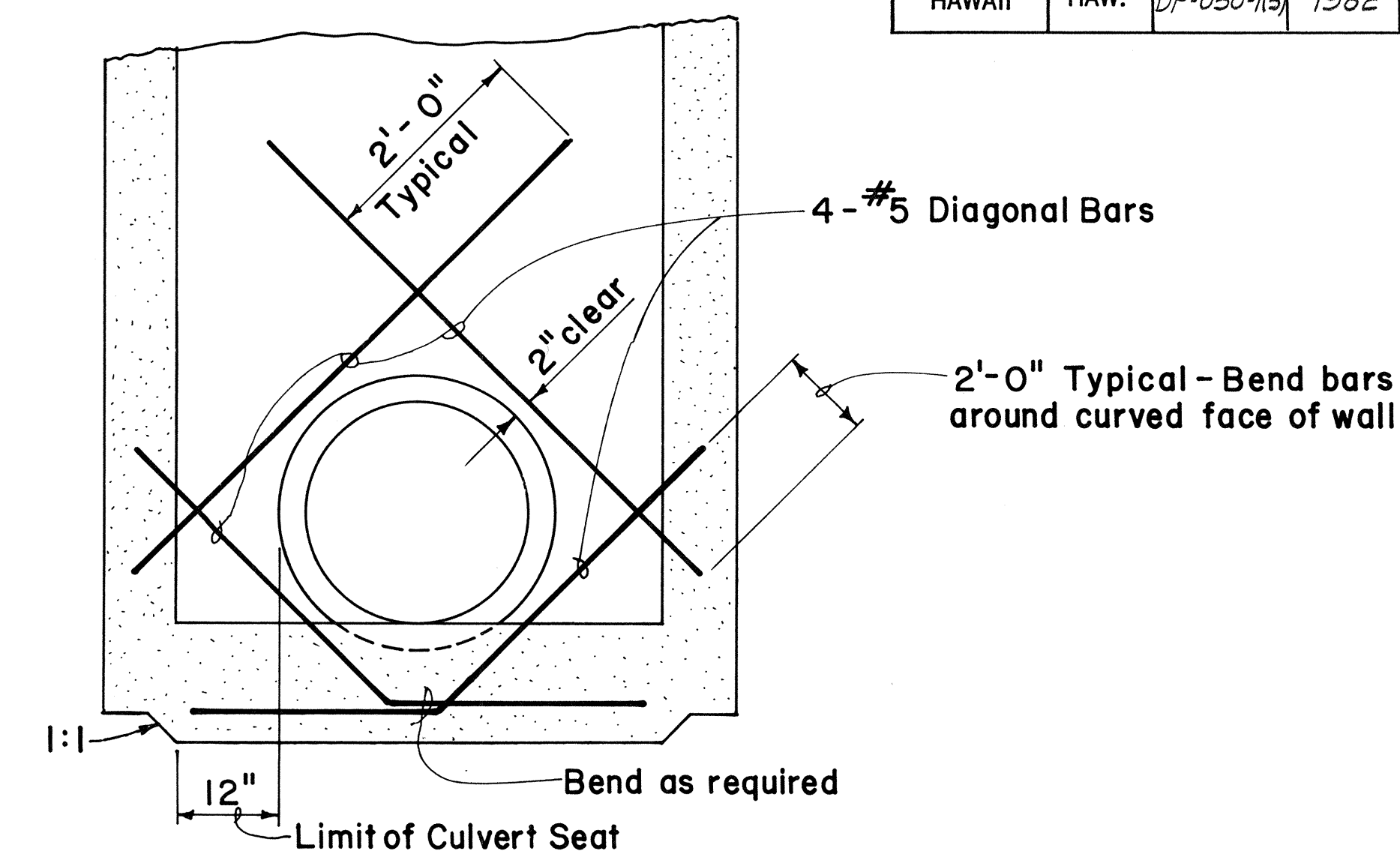
**PLAN - CONCRETE BASE
TYPE "D" STORM DRAIN MANHOLE**



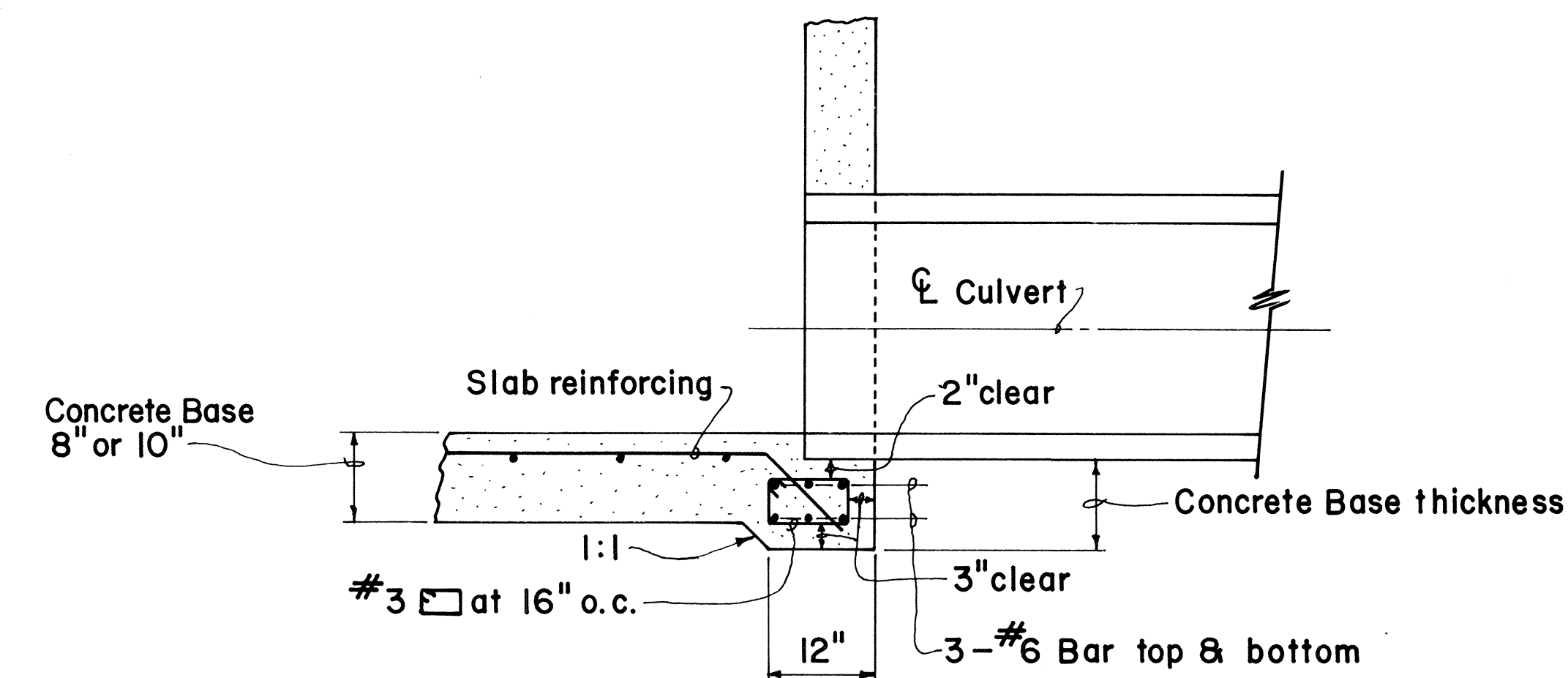
ELEVATION



**PLAN - CONCRETE BASE
TYPE "E" STORM DRAIN MANHOLE**



DETAIL "A"



DETAIL OF CULVERT SEAT

APPROVAL RECOMMENDED:
[Signature] 8-20-80
 HYDRAULIC DESIGN ENGINEER DATE
 APPROVED:
[Signature] 8-20-80
 ASSISTANT CHIEF, ENGINEERING DATE

NO.	REVISION	APPROVED BY	DATE
1	Supersedes Sht. DH 5 approved 12-17-69	H.T.	8/20/80
2	Change Class of concrete	H.T.	12/4/80

STATE OF HAWAII DEPARTMENT OF TRANSPORTATION HIGHWAYS DIVISION
STANDARD DETAILS TYPE D AND E STORM DRAIN MANHOLE
Not To Scale Date: August 1980

SHEET NO. 1 OF 2 SHEETS DH5A

