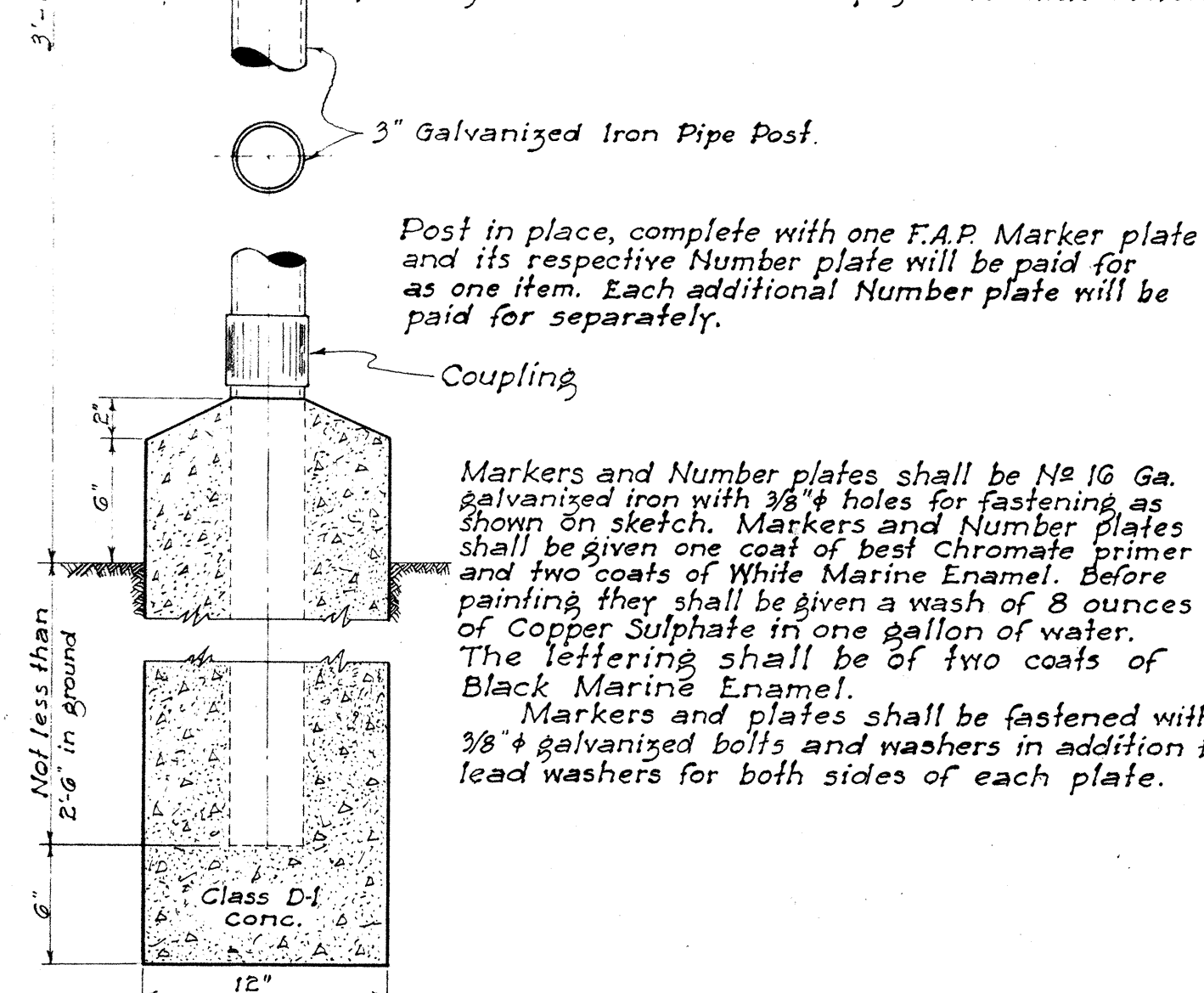
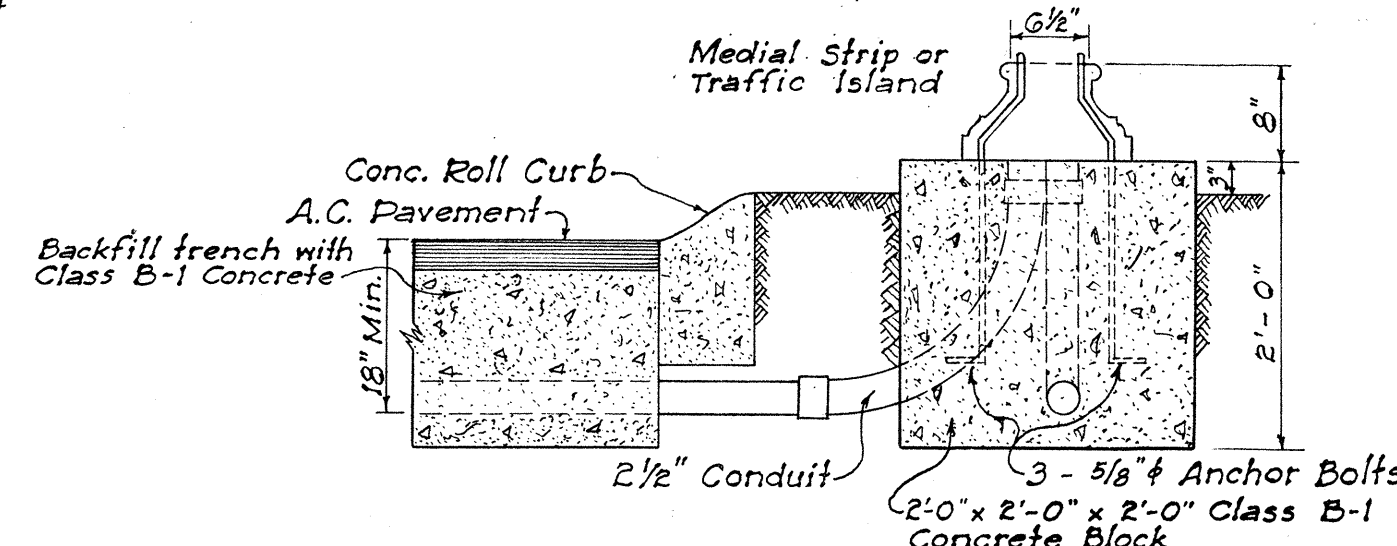
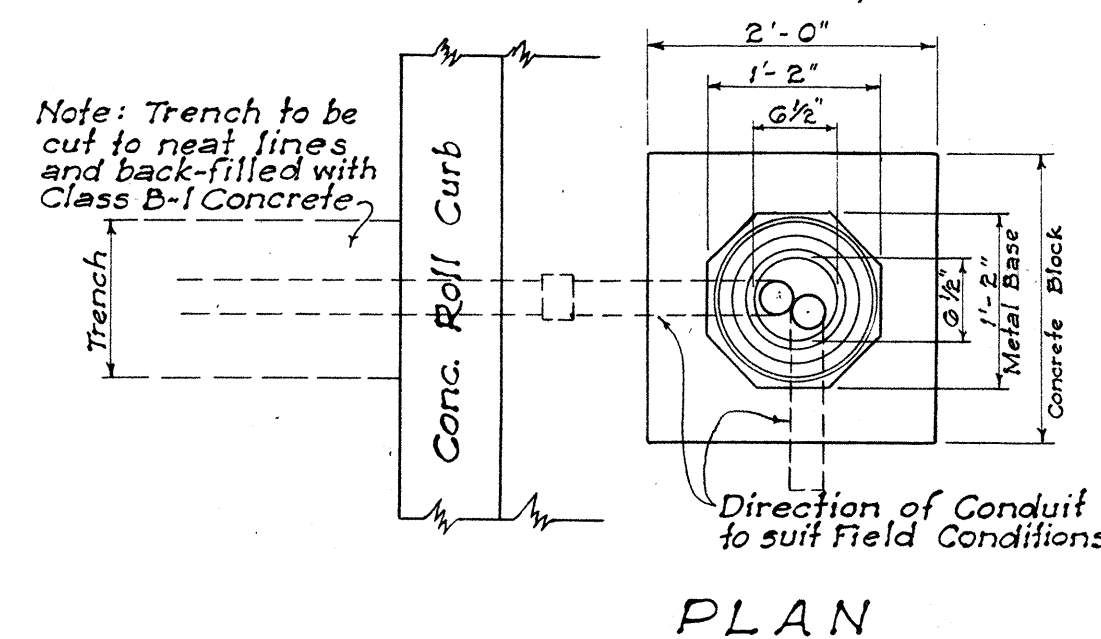


ARRANGEMENT OF MARKERS

One F.A.P. Marker and one plate shall be placed at the beginning and end of each isolated F.A. Project. Where two F.A. Projects adjoin, a single marker and two Number plates shall be placed, each Number plate pointing in the direction of the project to which it refers.

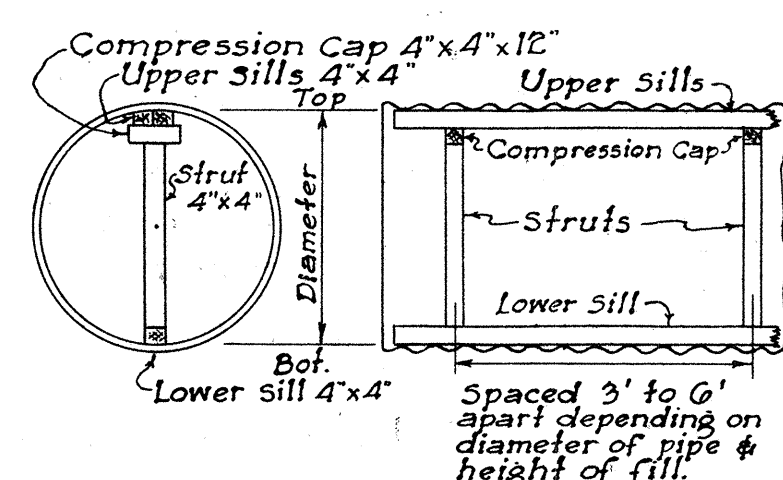


FEDERAL AID MARKER
Scale: 1 1/2" = 1'-0"



NOTE: Unless otherwise specified, all concrete for base for Traffic Standards, Pull Boxes, Concrete Jackets for Transite Ducts shall be Class B-1 Concrete.

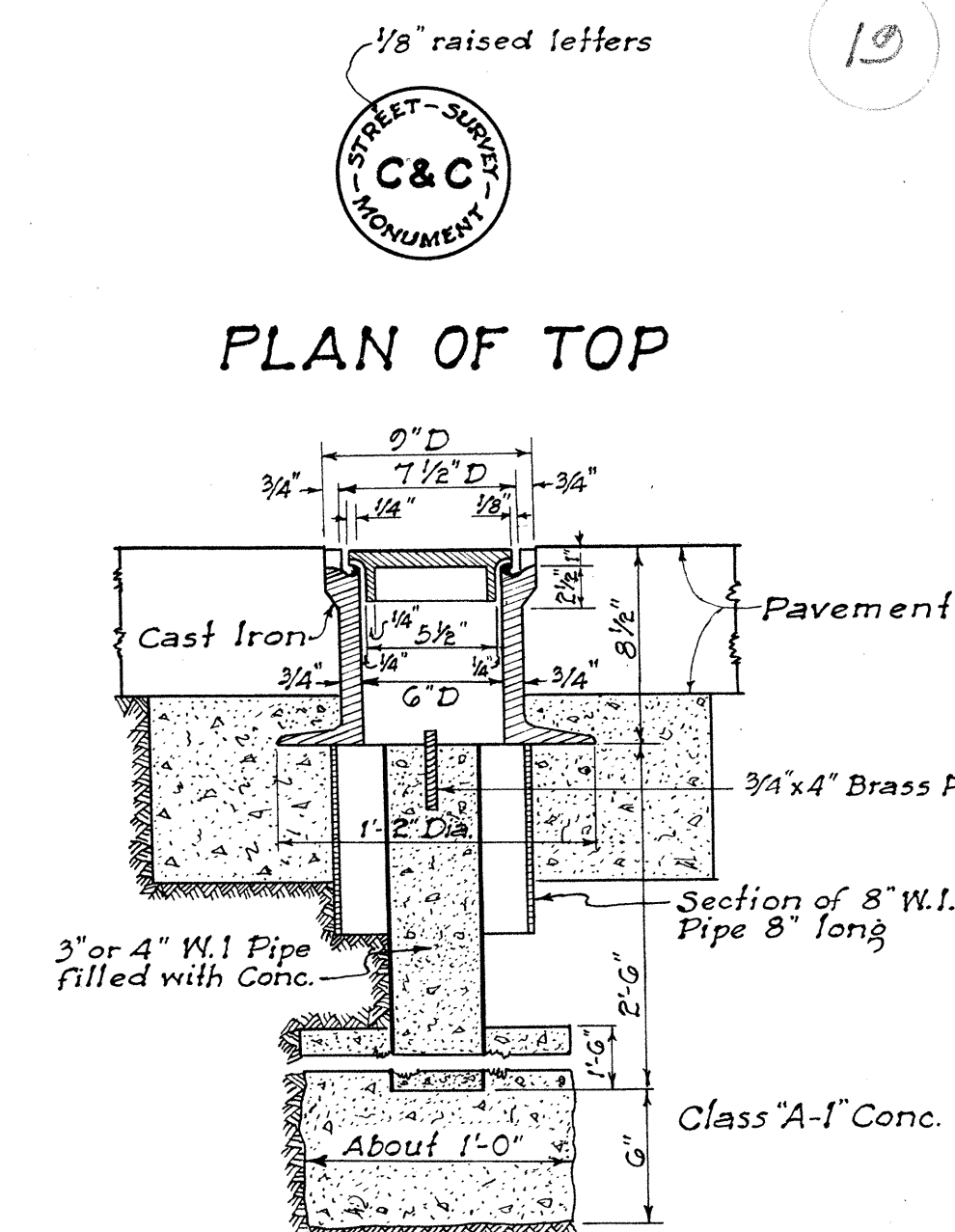
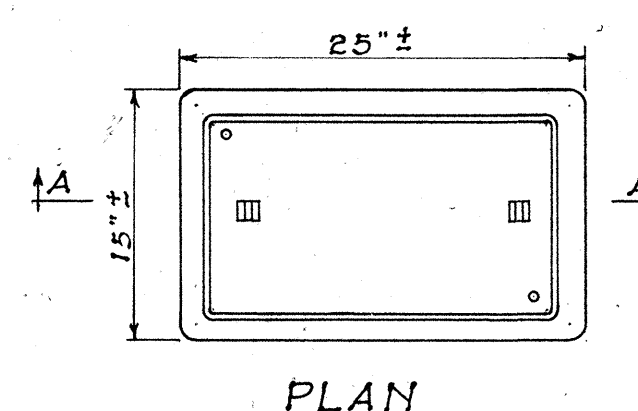
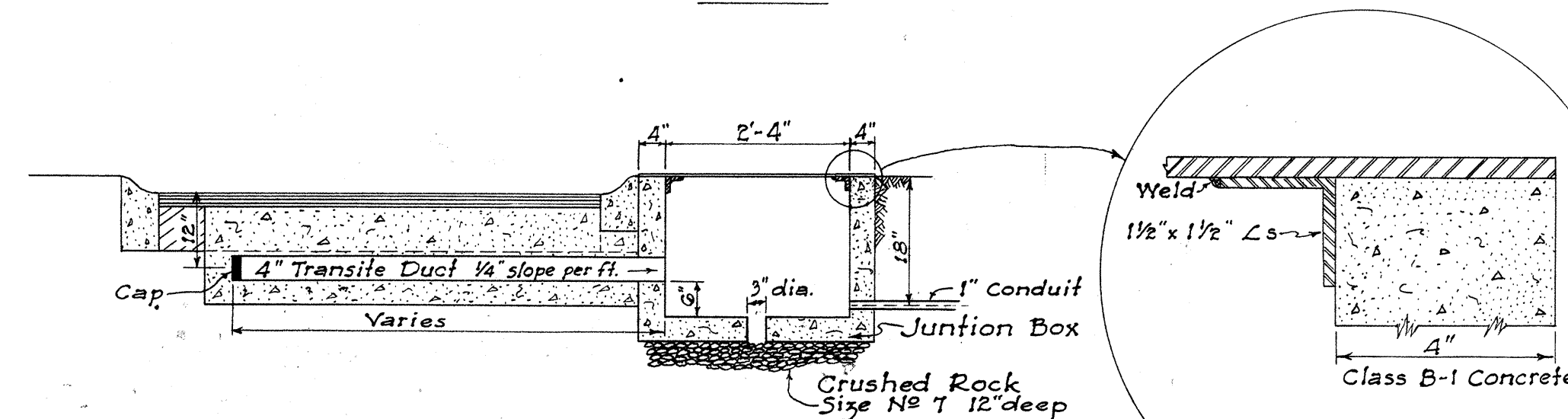
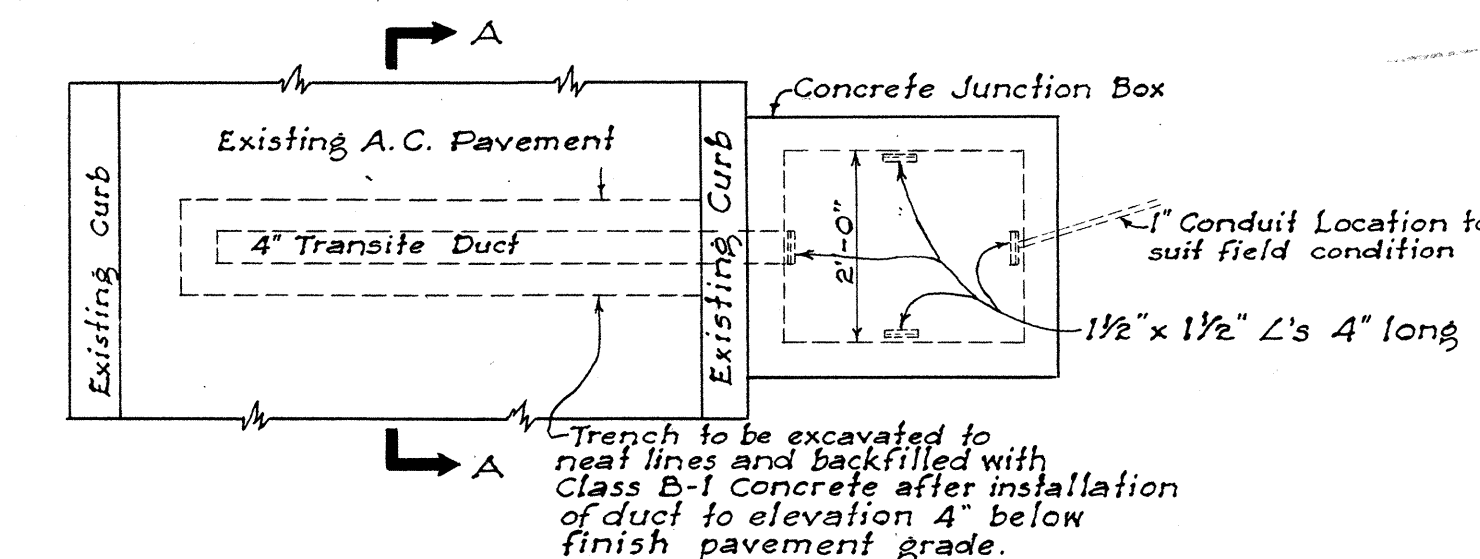
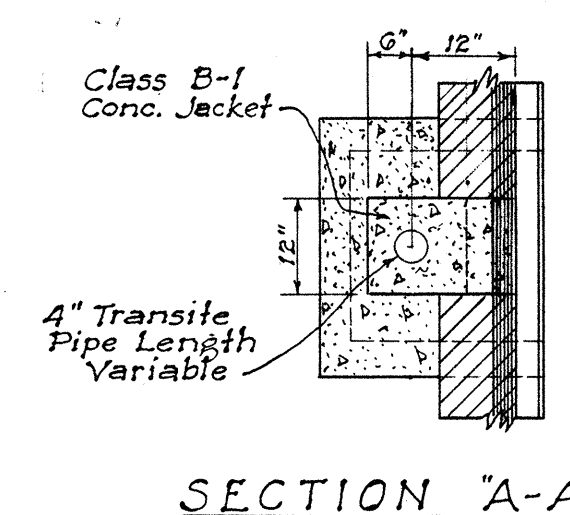
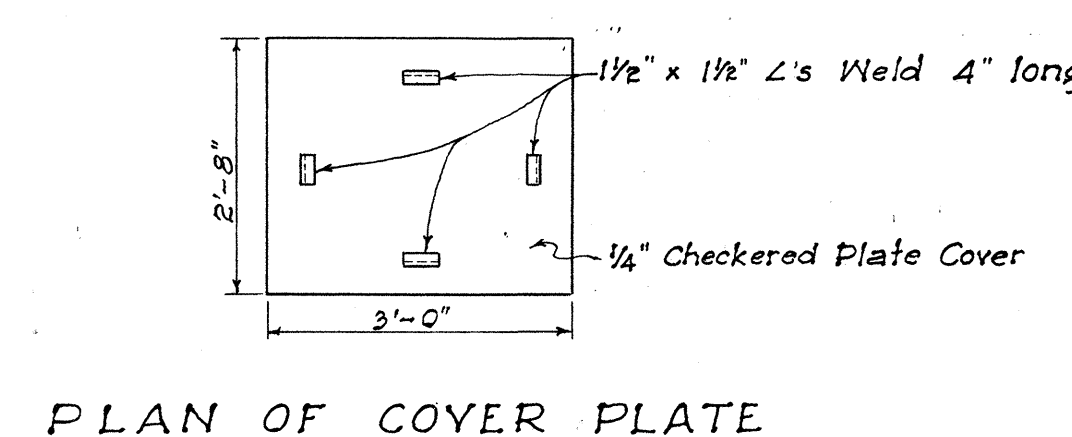
DETAIL OF BASE FOR TRAFFIC STANDARD AND DISPATCHER PEDESTAL



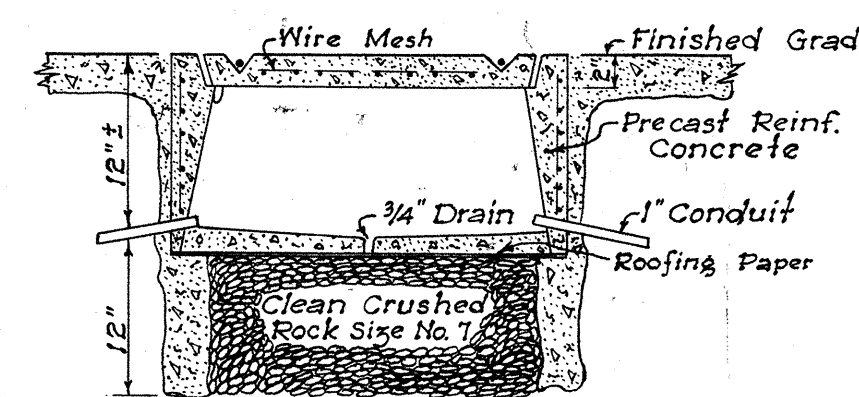
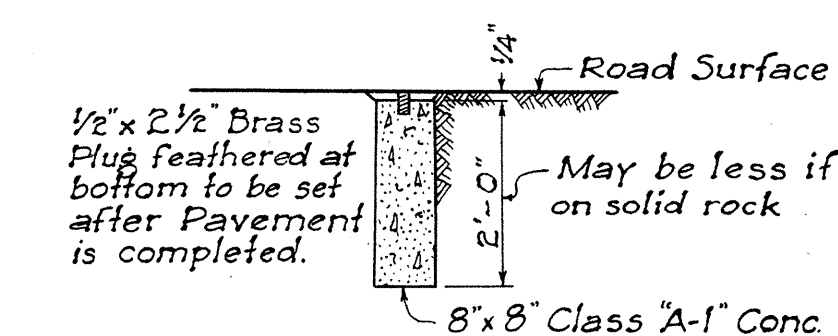
Diameter of Pipe in inches	Length of Struts in inches	Spacing of Struts in ft. for Various Heights				
		FILL 1' to 5'	FILL 5' to 10'	FILL 10' to 20'	FILL 20' to 30'	FILL Over 30'
48	38 3/8	—	—	—	6	4
54	44 3/8	6	6	6	6	4
60	51	6	6	6	6	4
66	57 1/4	6	6	6	6	4
72	63 3/8	6	6	6	5	3.5
78	69 1/8	6	6	6	4.5	3.5
84	75 1/4	6	6	6	4	3

NOTE: Length of Struts are based on 4" x 4" timbers which is the minimum size recommended. If larger sills or compression caps are used, length of struts should be changed accordingly.

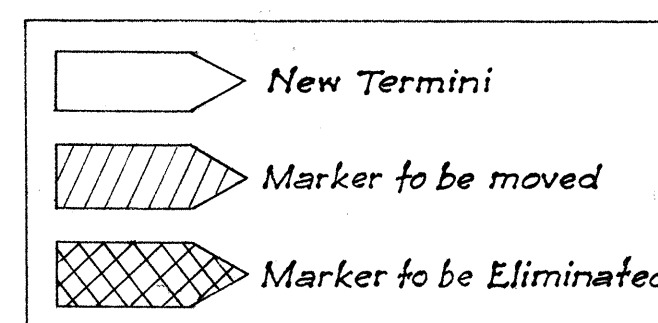
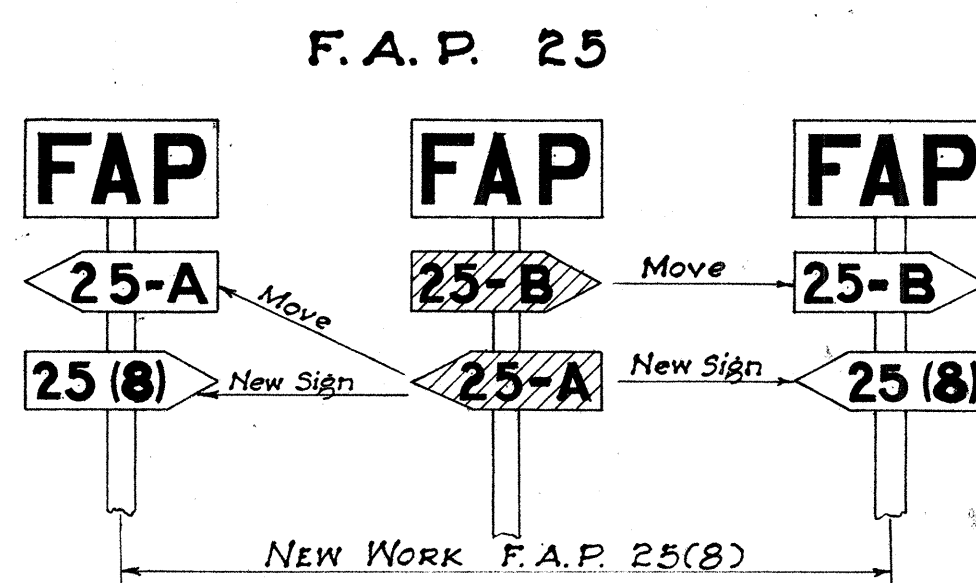
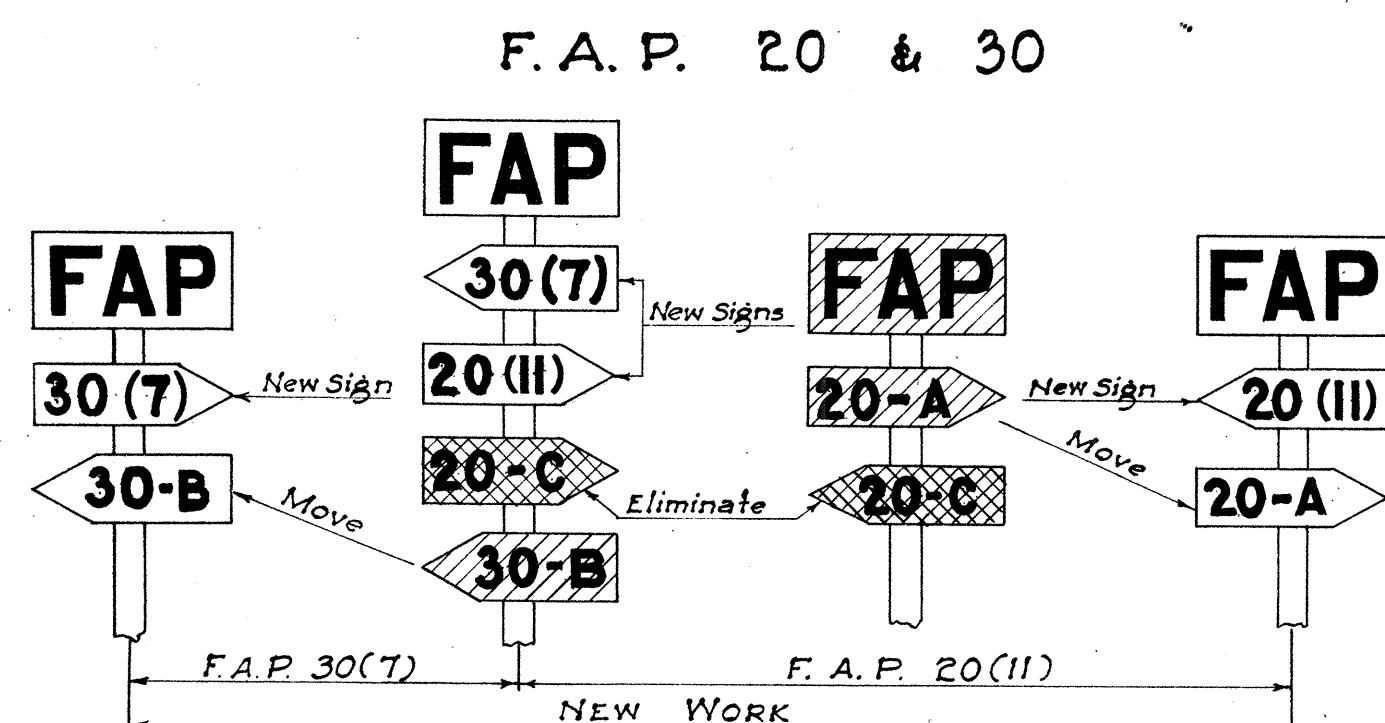
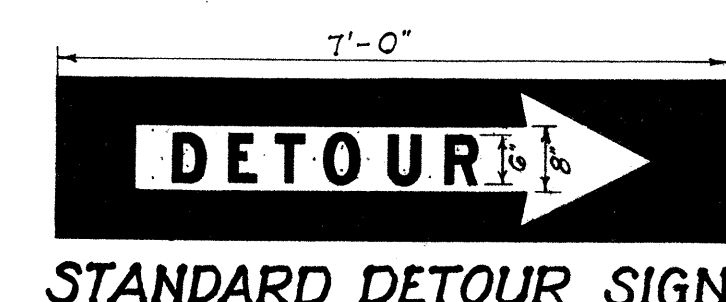
STRUTTING DIAGRAM & TABLE FOR CORRUGATED METAL PIPE CULVERT



STANDARD C&C STREET SURVEY MONUMENT



DETAIL OF PULL BOX
Scale: 1" = 1'-0"



NOTE: Federal Aid Markers should be placed at the termini of suffix designated sections. Intermediate letter designated markers

of adjacent sections located within the limits of new improvements should be moved to the termini of the new work.

The same procedure would be followed on each successive improvement until all markers for letter designated sections are eventually eliminated.

METHOD OF MARKING F.A. PROJECTS AT OVERLAPS (USING NUMBER SUFFIX ON NEW WORK)

TERRITORIAL HIGHWAY DEPARTMENT
TERRITORY OF HAWAII
STANDARD DETAILS
SCALES AS NOTED
APPROVED: *[Signature]*
Territorial Highway Engineer
May 31, 1949

SHEET NO. OF SHEETS