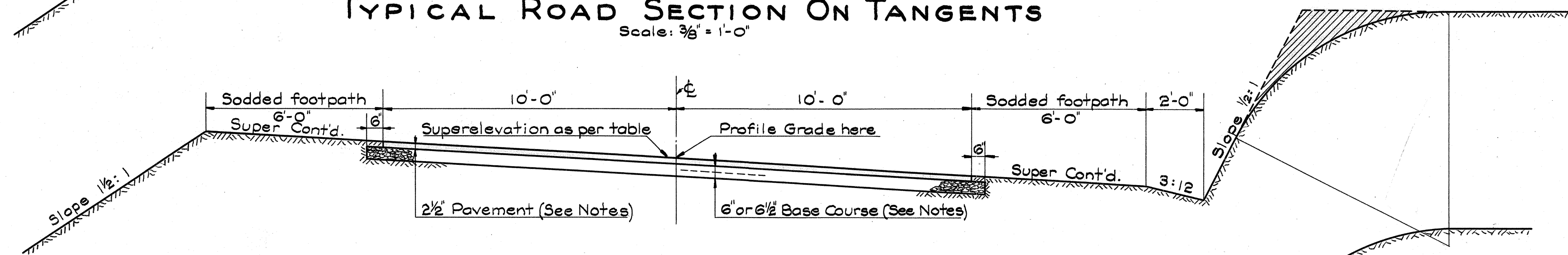


TYPICAL ROAD SECTION ON TANGENTS
Scale: $\frac{3}{8}$ " = 1'-0"



TYPICAL ROAD SECTIONS ON CURVES
Scale: $\frac{3}{8}$ " = 1'-0"

BASE COURSE & PAVEMENT NOTES

BASE COURSE: Type used shall be that required by the plans or ordered by the Engineer. The two types are described below.

6 1/2" BASE COURSE: Total compacted thickness consisting of a 3 1/2" course of salvaged old surface material covered by a 3" broken stone base course.

6" BASE COURSE: Broken stone base course having 6" compacted thickness of mineral aggregate (12% Wear).

2 1/2" PAVEMENT: Bituminous macadam pavement: 2 1/2" compacted thickness as follows: 2 1/2" (Compacted) coarse rock (2 1/4"-1 1/4"); 12 lbs. per sq. yd. of bituminous binder; approx. 0.012 cu. yd. per sq. yd. of Keystone (1" to 1/2"); between 3 to 4 lbs. per sq. yd. of bituminous binder; approx. 0.005 cu. yd. per sq. yd. of Pea gravel (1/2" to #8).

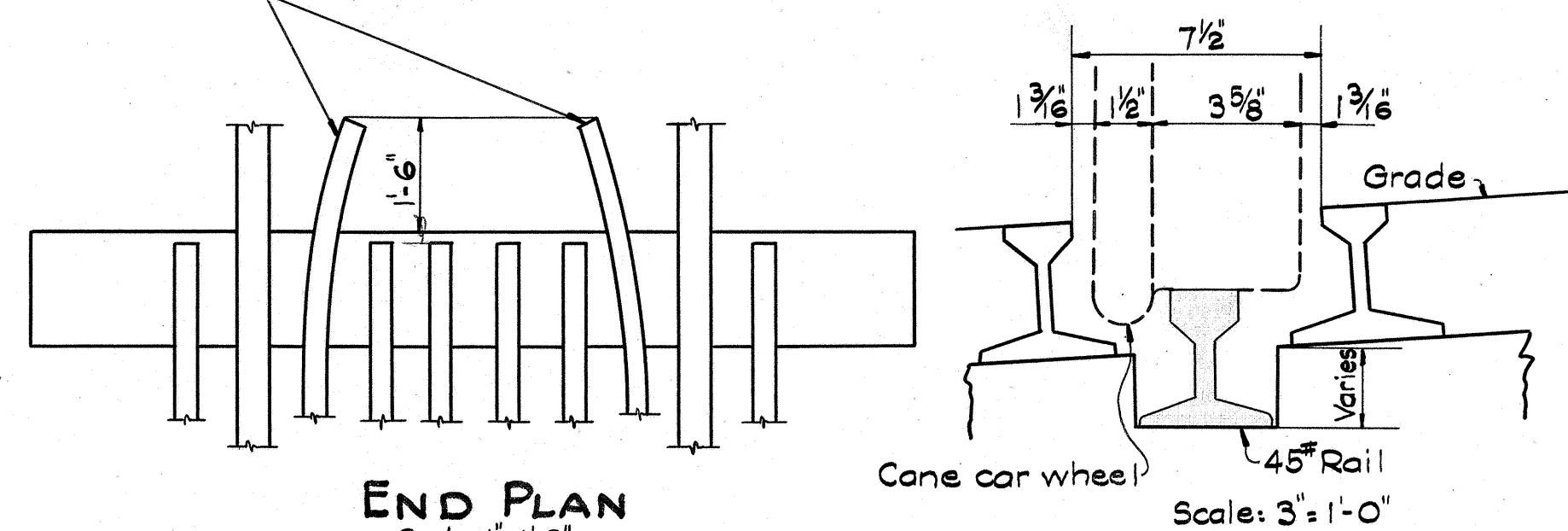
SODDED FOOTPATH SURFACE: Sodded footpath shall be planted with maniania grass.

GENERAL NOTES: Particular reference is made to the specification covering these items of work.

NOTE-RE USE OF BASE COURSE

Salvaged material available on existing road between points A & B on the title sheet map shall be used to construct as much of the 6 1/2" base course as available material permits; balance of base course is to be 6" base course; see Special Provisions.

Bend these 2 rails as shown on both sides of road



END PLAN
Scale: 1" = 1'-0"

SECTION
Scale: 1" = 1'-0"

DETAILS OF INDUSTRIAL TRACK CROSSING

ORIGINAL PLAN
DESIGNED BY
NOTED BY
CHECKED BY
DATE
Nov. 1935
H.H.C.
E.J.S. & E.H.H.
R.H.