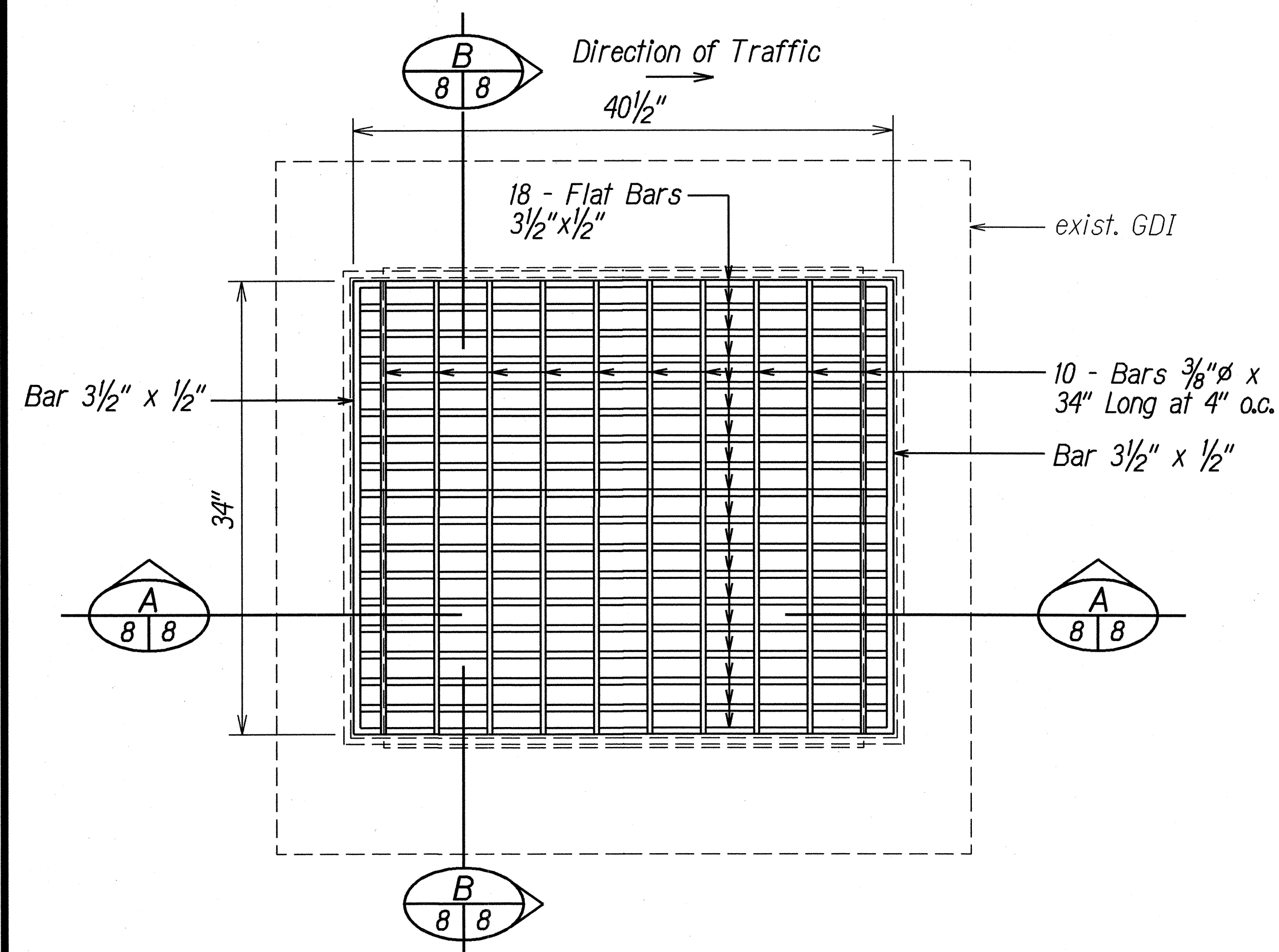
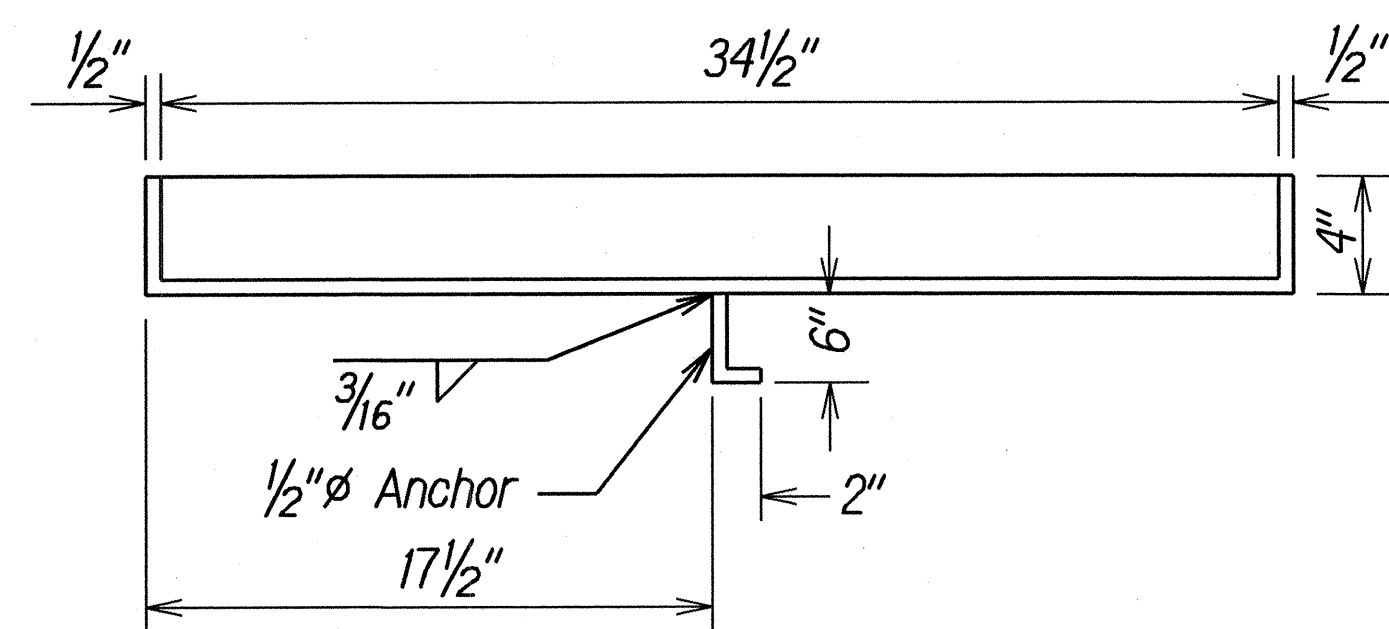


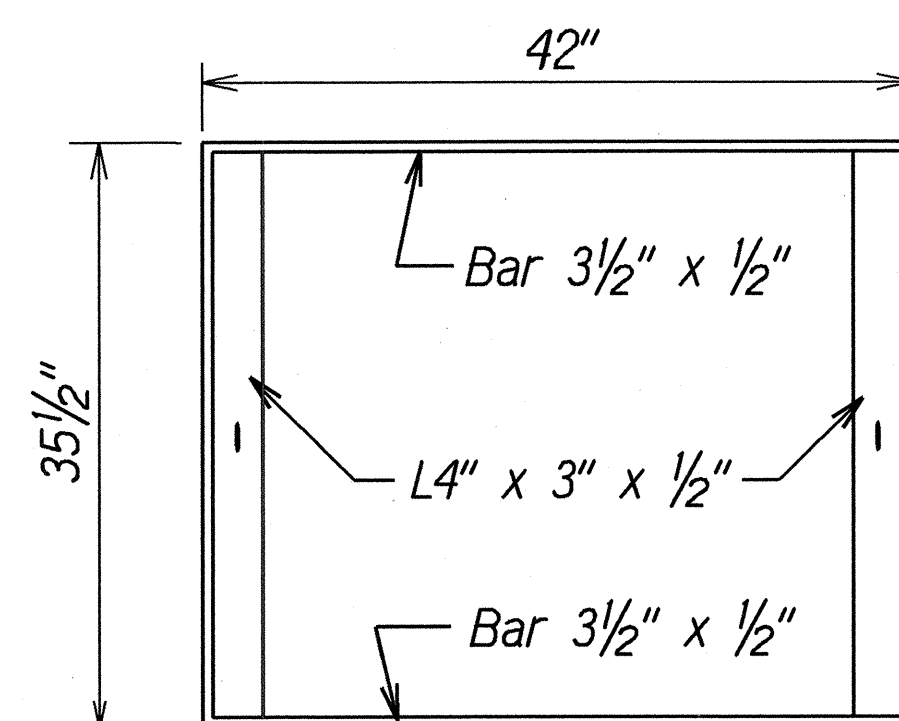
FED. ROAD DIST. NO.	STATE	PROJ. NO.	FISCAL YEAR	SHEET NO.	TOTAL SHEETS
HAWAII	HAW.	HWY-K-03-04M	2004	8	20



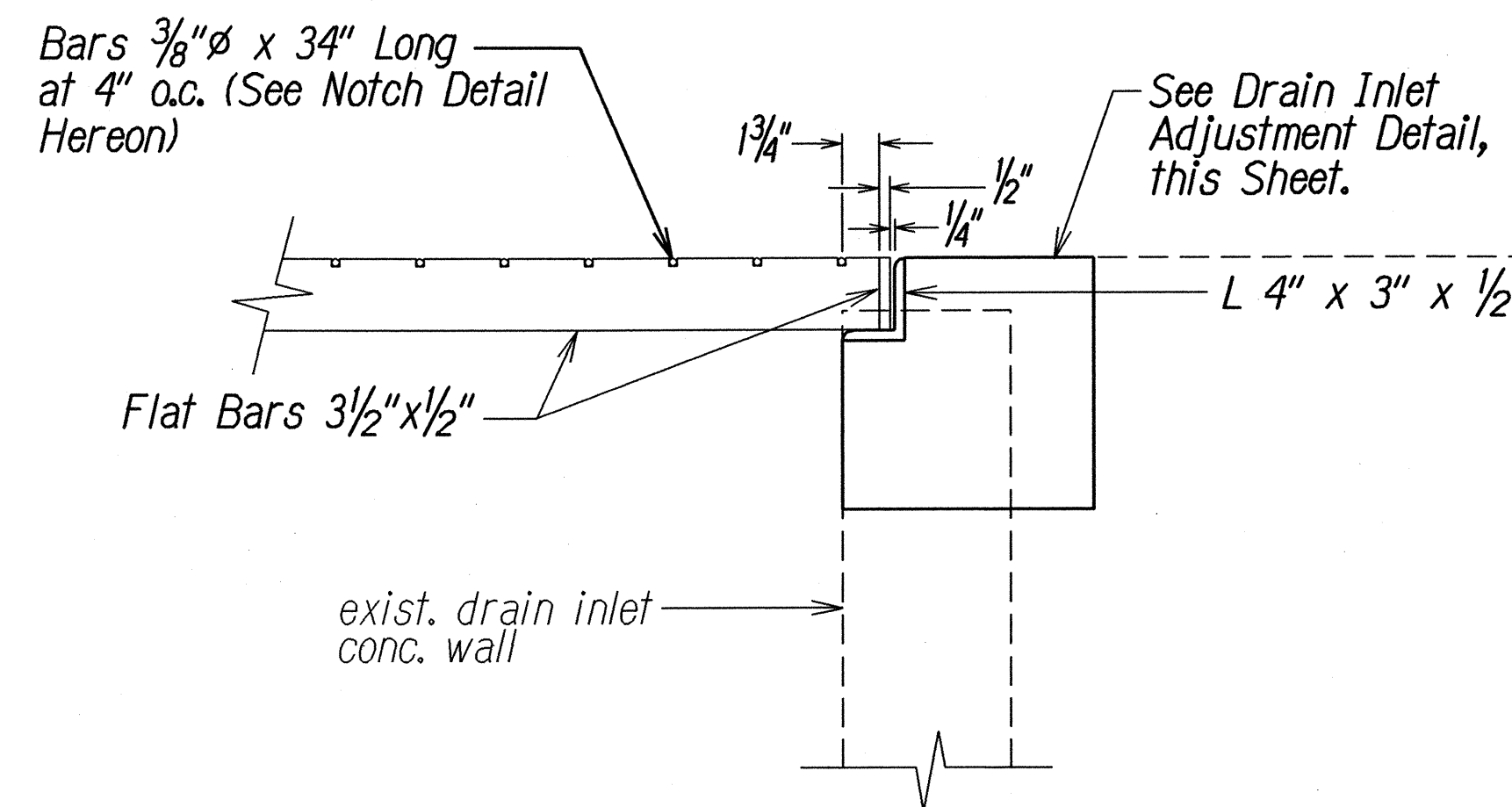
PLAN - DRAIN INLET ADJUSTMENT
AT KUHIO HWY. STA. 474+90± O/S RT.
Not to Scale



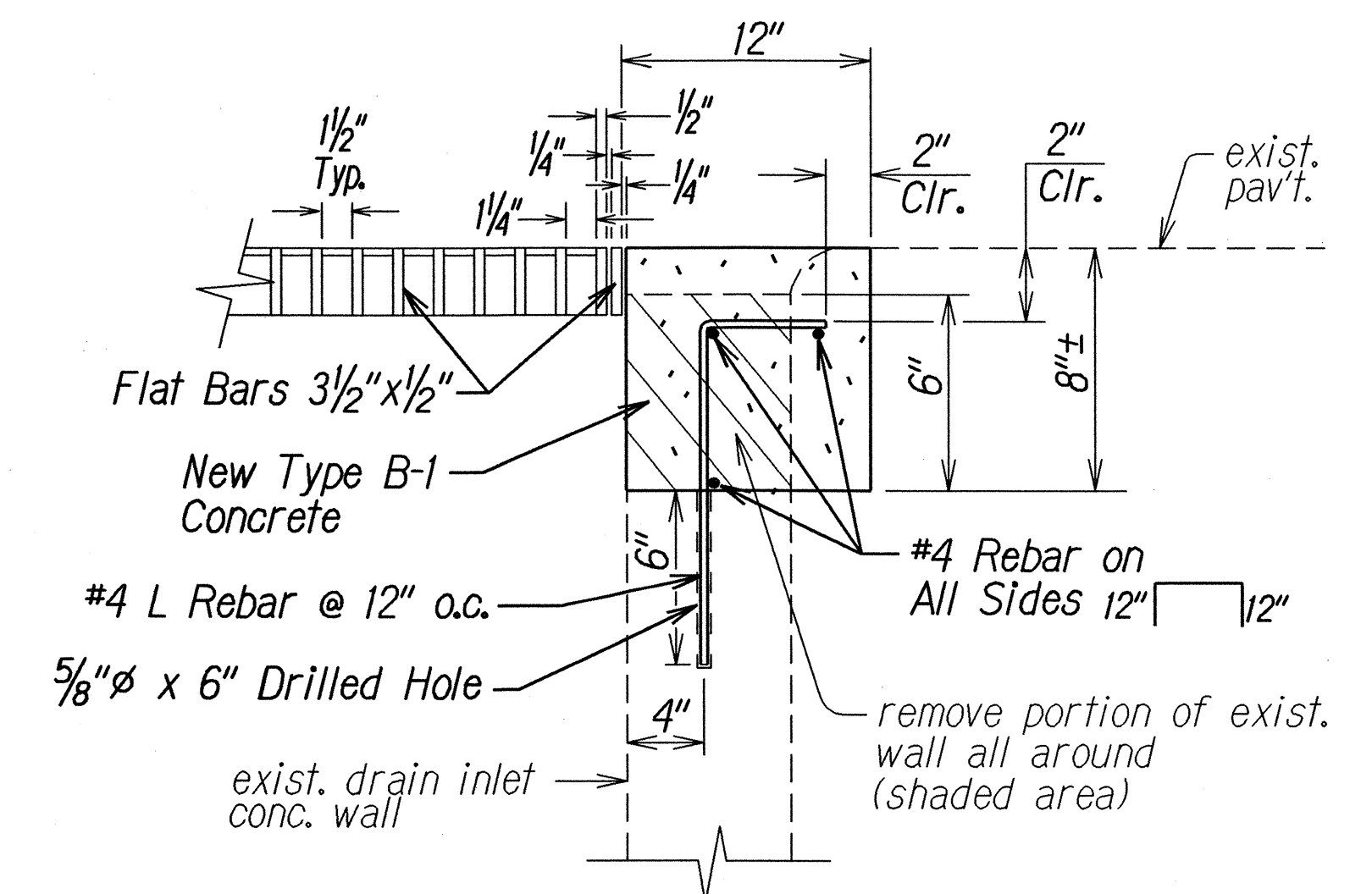
SECTION - FRAME
Not to Scale



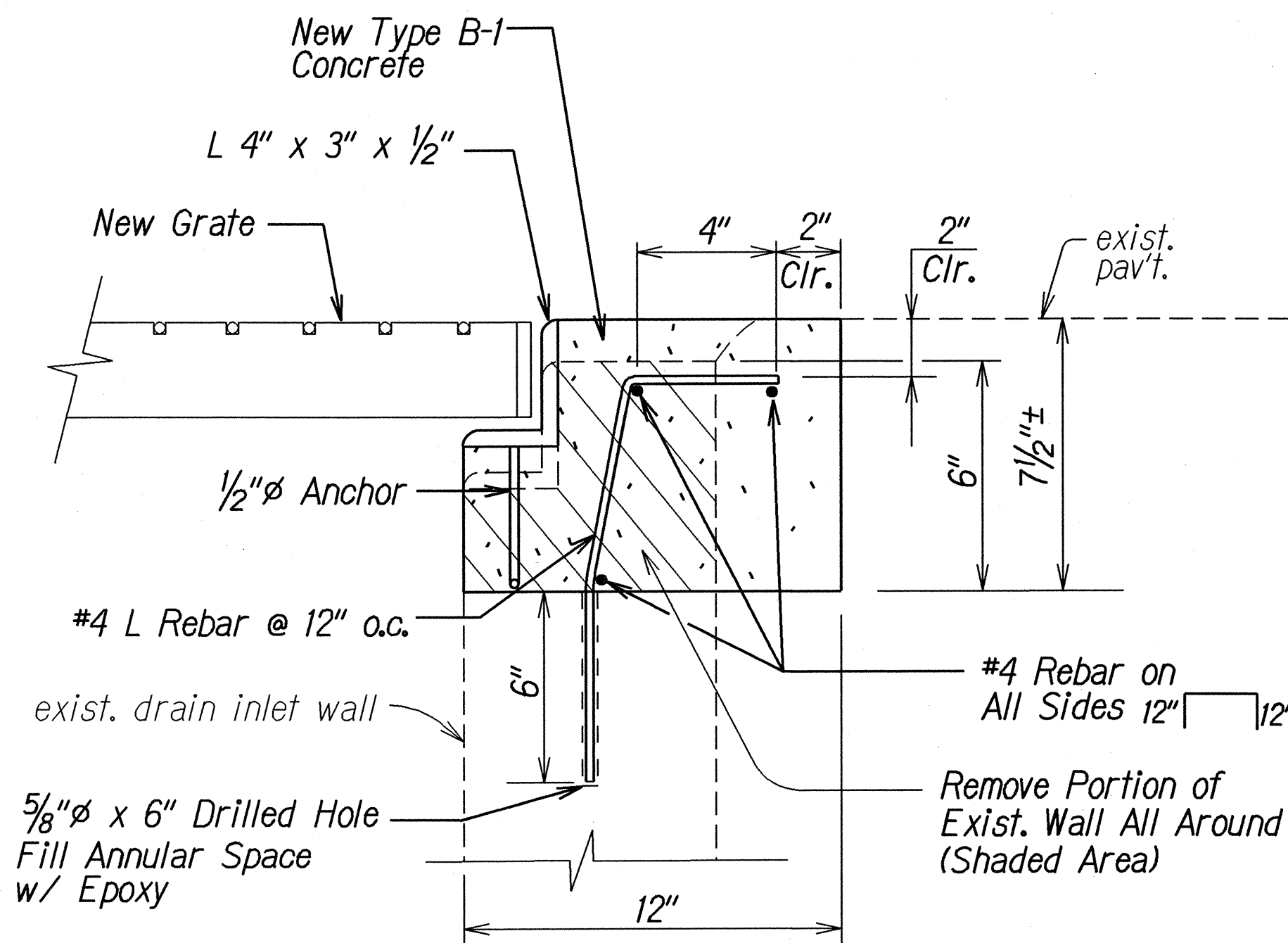
PLAN - FRAME
Not to Scale



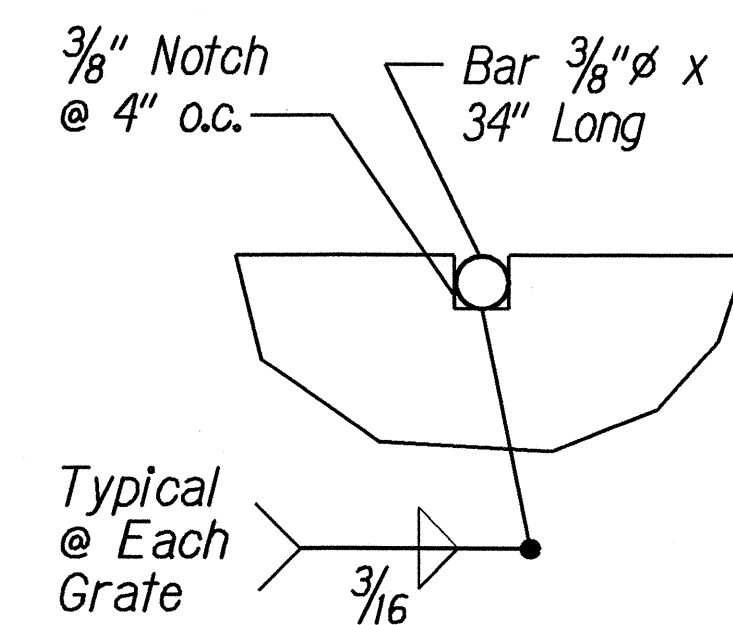
SECTION - GRATE A-A
Not to Scale



SECTION - GRATE B-B
Not to Scale



ADJUSTMENT DETAIL FOR DRAIN INLET
AT KUHIO HWY. STA. 474+90± O/S RT.
Not to Scale



NOTCH DETAIL
Not to Scale

SURVEY PLOTTED BY	DATE
DESIGNED BY	2/25/04
QUANTITIES BY	
CHECKED BY	
ORIGINAL PLAN	
NOTE BOOK	
DESIGNED BY	
QUANTITIES BY	
CHECKED BY	

STATE OF HAWAII DEPARTMENT OF TRANSPORTATION HIGHWAYS DIVISION
DRAIN INLET ADJUSTMENT DETAILS
KAUMUALII HIGHWAY & KUHIO HIGHWAY Miscellaneous Pavement Reconstruction/ Resurfacing at Various Locations Project No. HWY-K-03-04M
Not to Scale Date: April 2004
SHEET No. 1 OF 2 SHEETS