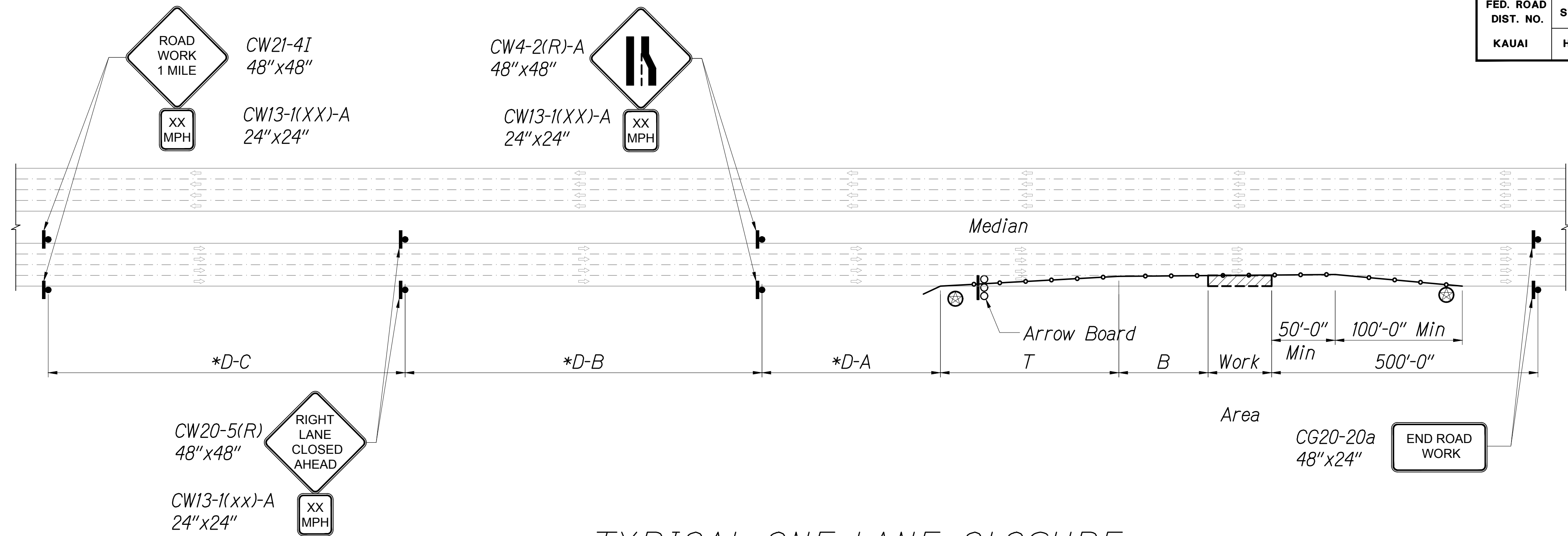


P:\Drafting\2023-04-25\_5135-40\_Kauai\25\_5135-40\_TCP-2.dwg, 5/23/2023 5:55:54 PM, temanaha

FED. ROAD DIST. NO.	STATE	FED. AID PROJ. NO.	FISCAL YEAR	SHEET NO.	TOTAL SHEETS
KAUAI	HAW.	HWY-K-02-23M	2023	25	41



## TYPICAL ONE-LANE CLOSURE

### Notes for Typical One-Lane Closure:

- For work being performed in the left center lane, use mirror image of above with appropriate left lane closure signs and taper.
- For undivided highways, delete advance warning signs shown posted in median area.
- The advisory speed (XX) to be approved by the Engineer.
- See TABLE 1 for additional dimensions.
- Use sign spacing and taper lengths from TABLE 1 and change signs CW21-4-A and CW20-8(R) to CW20-1A(3D) and CW20-8(2D)(R) respectively.

Table 645-I For Traffic Control Plan

Posted Speed Limit (M.P.H.)	Sign Spacing (D) (Feet)			Taper Length (T) (Feet)		Longitudinal Buffer Space (B) (Feet)	Spacing of Cones or Delineators (Feet)		
	A	B	C	W=12' or Less*	W=Greater Than 12'		Taper	Tangent	Work Area
20	250	250	250	200	W x 17	35	20	20	10
25	250	250	250	200	W x 17	55	25	25	10
30	250	250	250	250	W x 20	85	30	30	10
35	250	250	250	250	W x 20	120	35	35	10
40	500	500	500	350	W x 30	170	40	40	10
45	500	500	500	550	W x 45	220	45	45	10
50	1000	1500	2640	600	W x 50	280	50	50	10

W = Width of lane or shoulder

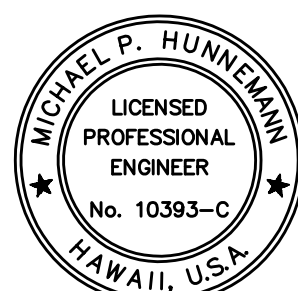
- A - From begin of taper to first sign  
B - Between 1st sign and 2nd sign  
C - Between 2nd sign and 3rd sign

### TYPICAL NOTES FOR TRAFFIC CONTROL PLAN (TCP)

- Sheet TCP-2 - Typical One-Lane Closure may be used for minor construction activities along with Section 645 of the Special Provisions.
- For the Nawiliwili Stream (Lihue Mill) and Waimea River Plantation bridges, if the contractor proposes any significant revisions to the enclosed traffic control plans, the contractor shall be responsible for preparing new traffic control plans and submitting them to HDOT Kauai District for their review and approval. Such revisions may include closing down one of the two bridges at night and shifting traffic to the opposite direction bridge. Other revisions will also be considered. Also see Note 2 on Sheet TCP-1.
- As required by the Department of Transportation, the Contractor shall provide at least two (2) Flagger/off-duty police officers to control the flow of traffic.
- The temporary signs shall be done in accordance with the "Manual on Uniform Traffic Control Devices for Streets and Highways", 2003 edition.
- Contractor to make repair/improvements to existing pavement as required to provide a level, smooth and safe riding surface for all existing traffic. All costs associated with the repairs and improvements shall be incidental to the various contract items.
- Driveways shall be kept open unless the owners of the properties using these rights-of-way are otherwise provided for satisfactorily.
- For the portable Changeable Message Sign, Contractor shall also provide the day of the week in addition to the date xx/xx/xx when the space of the sign allows.

### Legend:

- Designates Work Area
- Retro Reflective Cone
- Direction of Traffic
- Arrow Board
- Sign (Shown Facing Left)
- Flagger/Police Officer
- Type III Barricade
- High Level Warning Device (Flag Tree)



Michael P. Hunneman  
EXPIRATION DATE OF THE LICENSE 4/30/2024  
THIS WORK WAS PREPARED BY ME OR UNDER MY SUPERVISION

### STATE OF HAWAII DEPARTMENT OF TRANSPORTATION HIGHWAYS DIVISION TYPICAL TRAFFIC CONTROL DETAILS & LEGEND

MINOR BRIDGE REPAIRS AT  
VARIOUS LOCATIONS, PART 1  
KAUAI, HAWAII  
PROJECT NO. HWY-K-02-23M

Scale: As Shown Date: May 2023

ORIGINAL PLAN	SURVEY PLOTTED BY	DATE
NOTE BOOK	DRAWN BY	
	CHECKED BY	
No.		