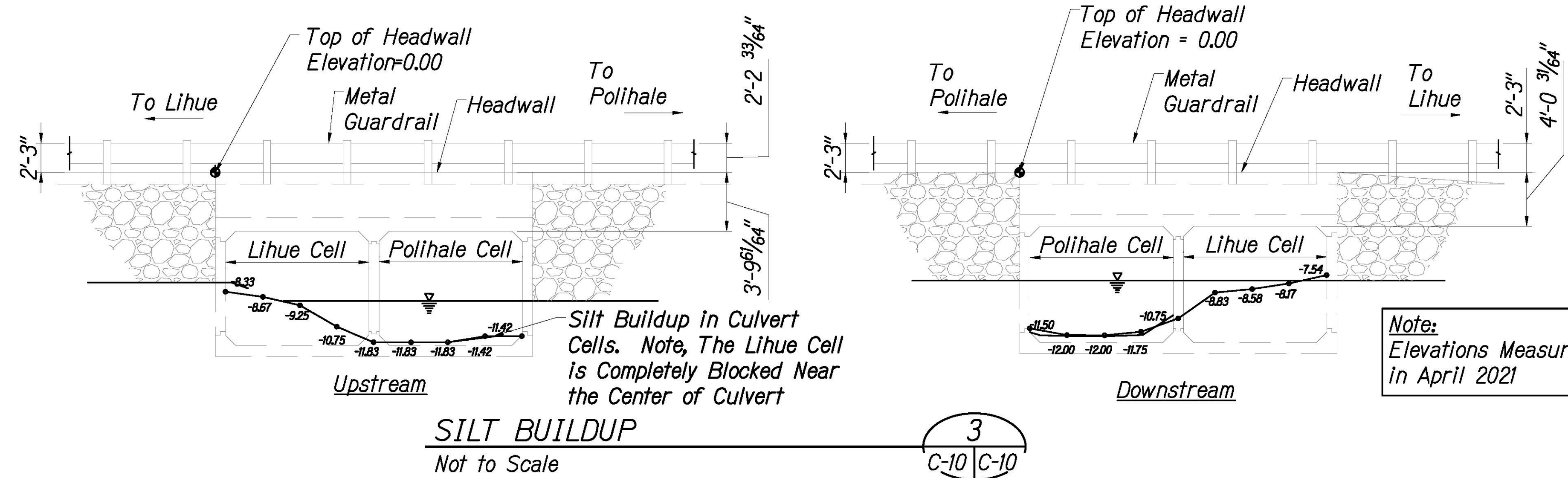
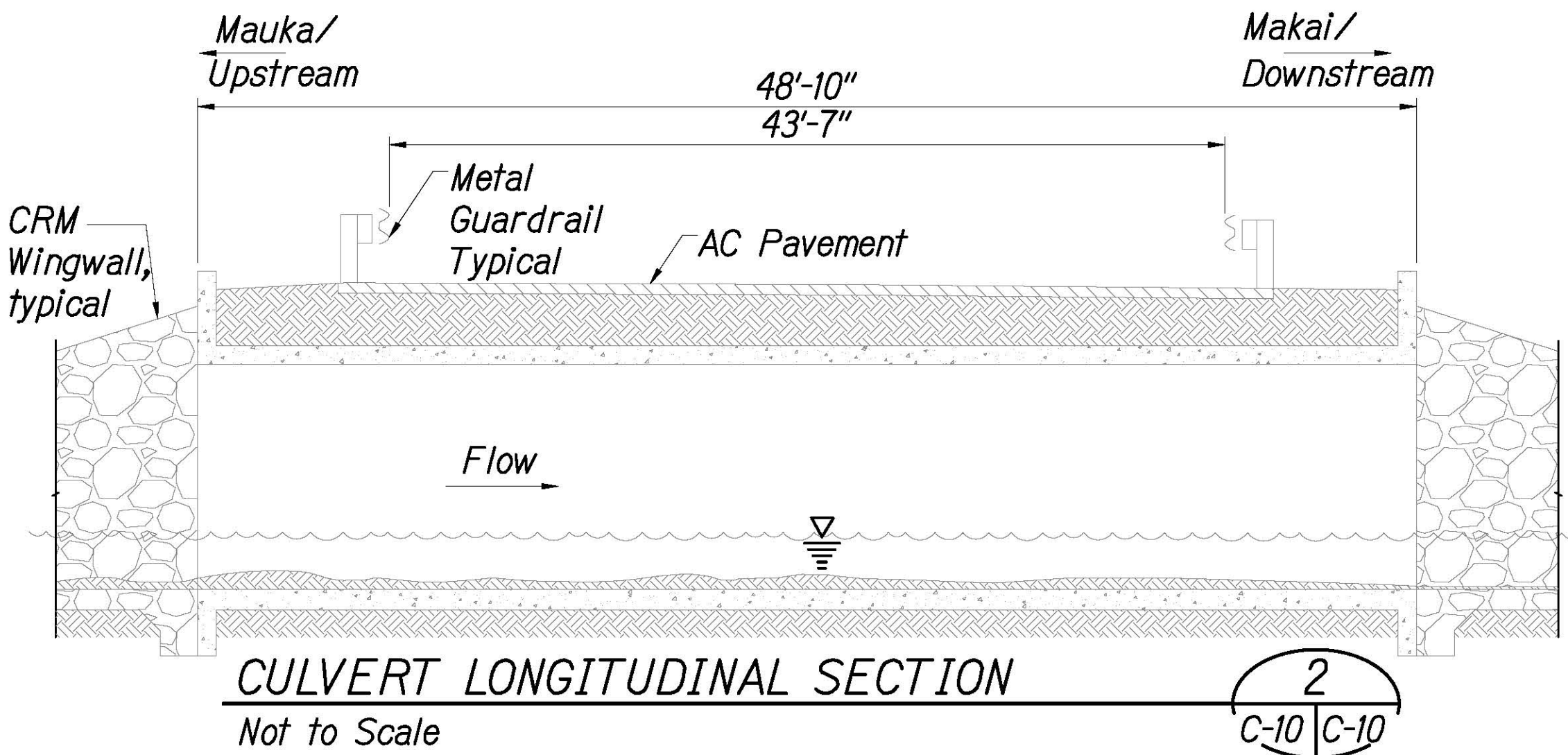
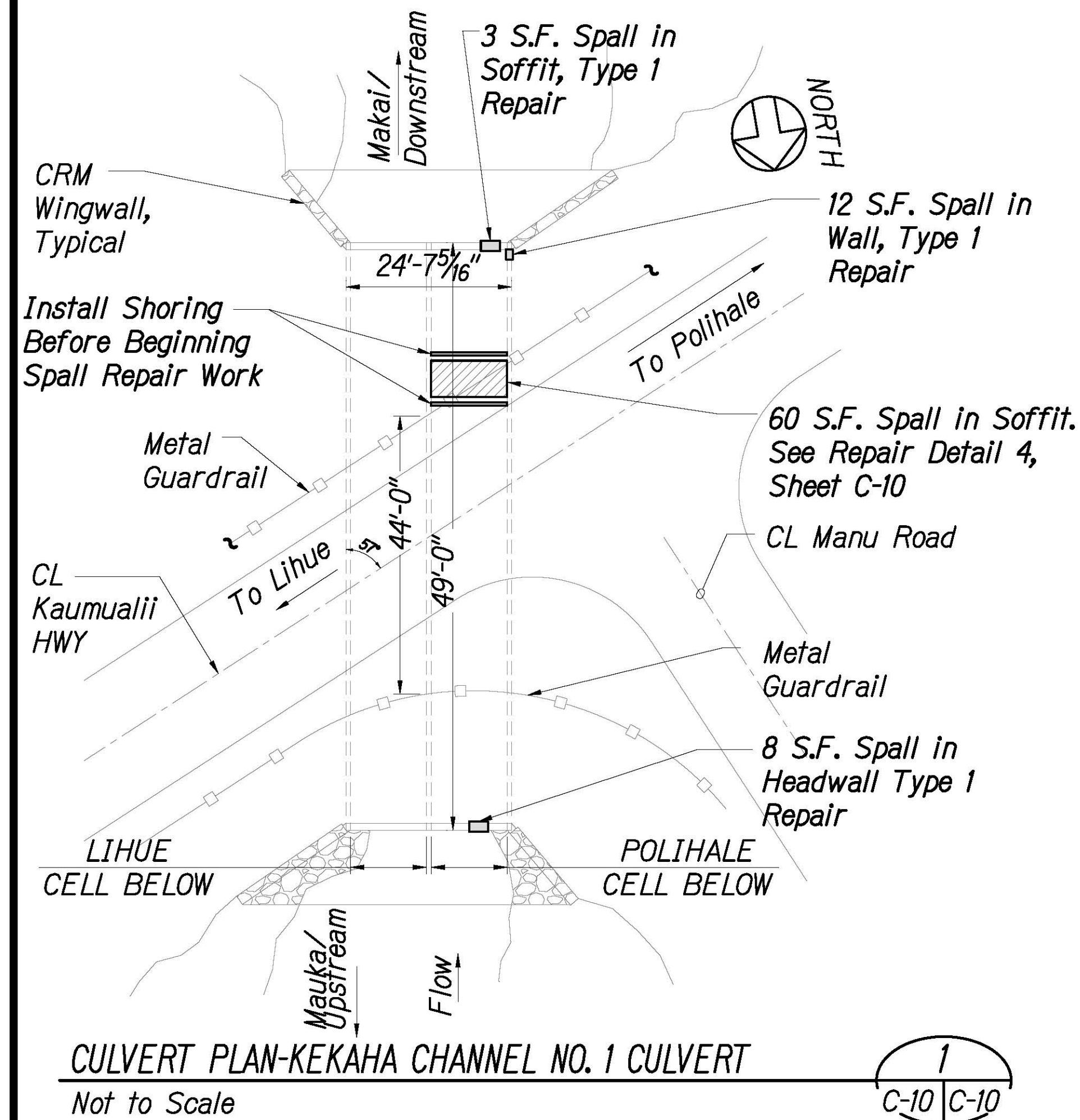


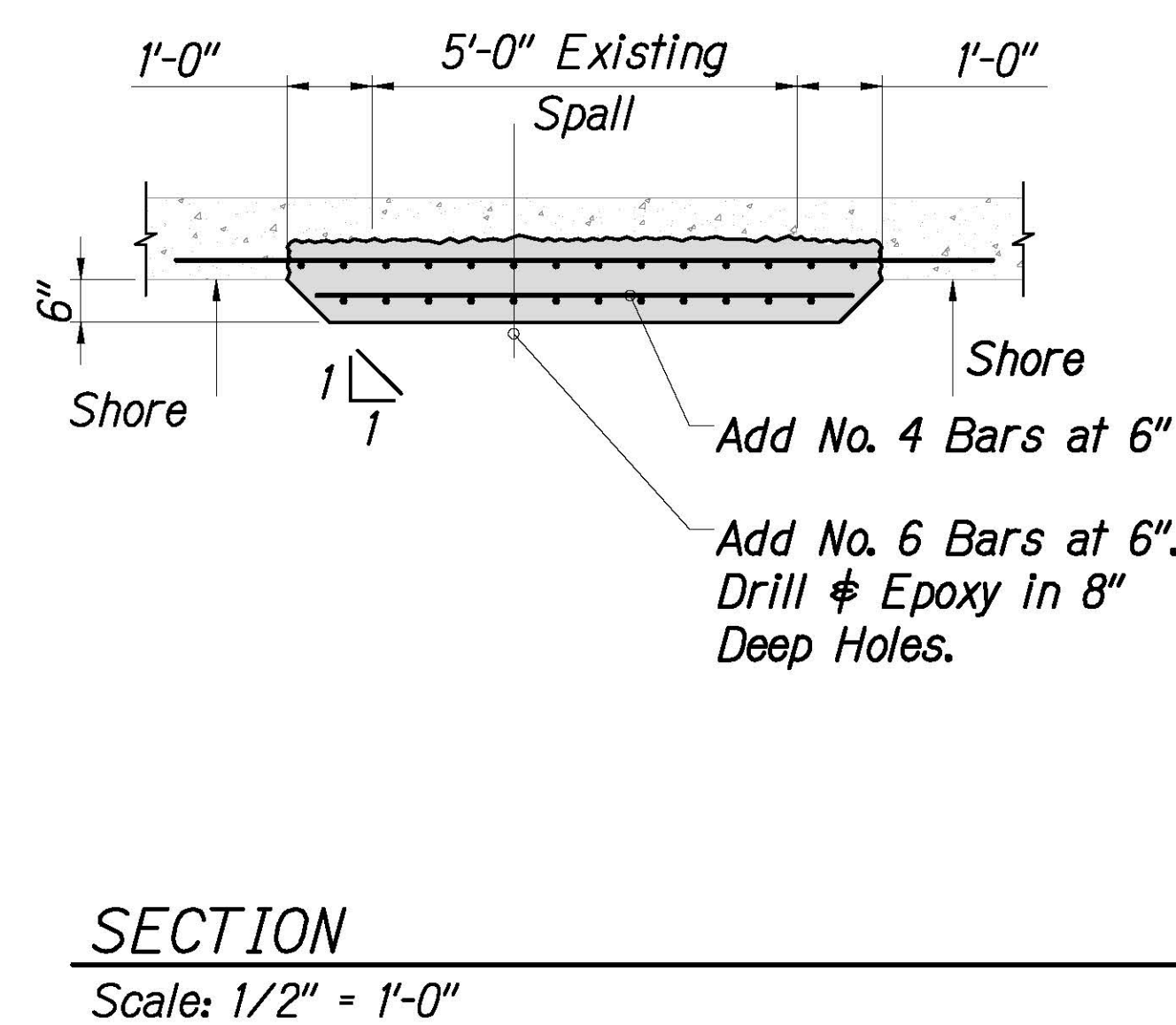
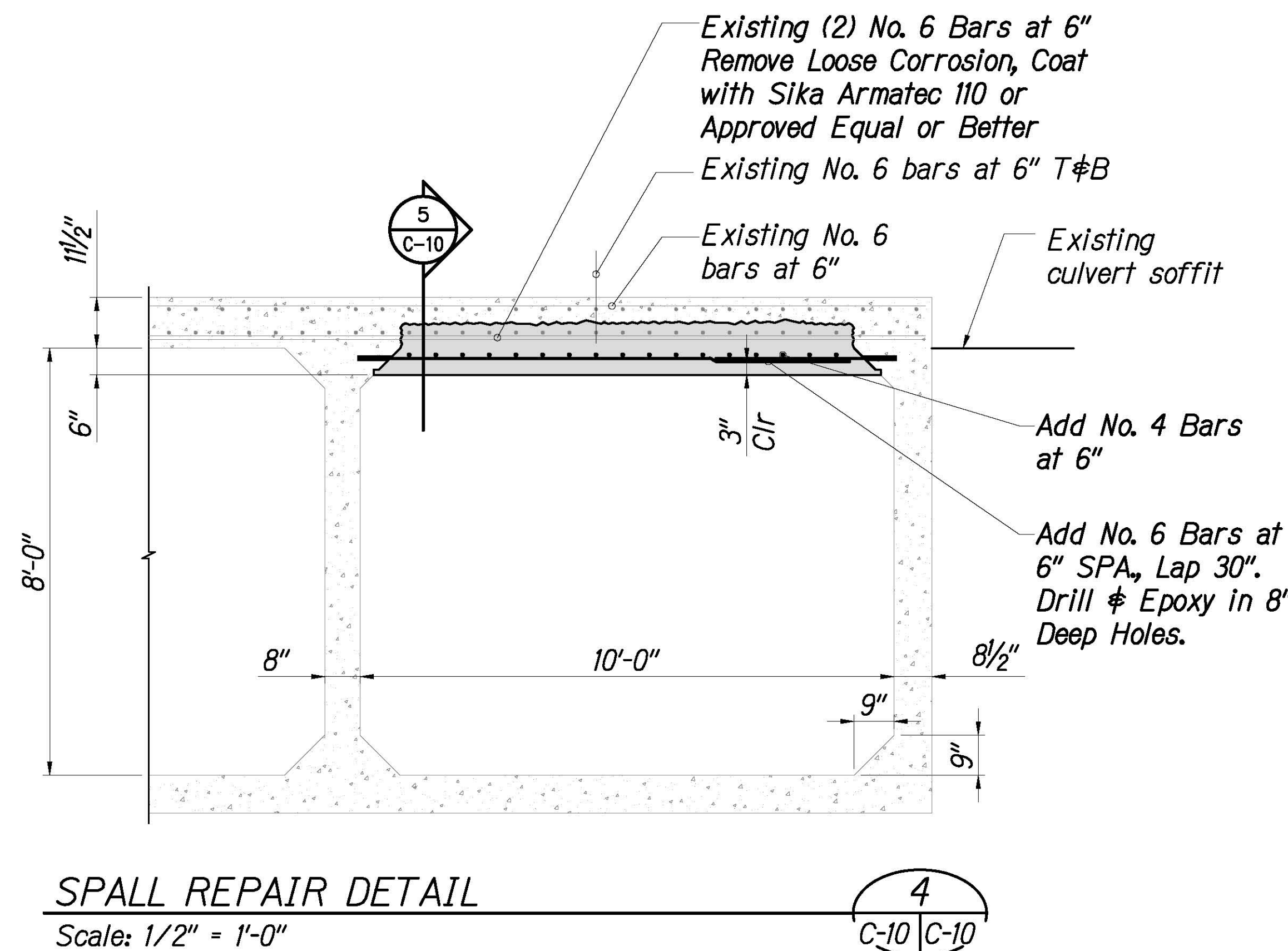
FED. ROAD DIST. NO.	STATE	FED. AID PROJ. NO.	FISCAL YEAR	SHEET NO.	TOTAL SHEETS
KAUAI	HAW.	HWY-K-02-23M	2023	ADD.20	41

**Traffic Control:**  
No Work on the 60 S.F. Spall in the Culvert Soffit shall Occur with Traffic Passing Overhead. Shift Traffic in the Mauka Direction. Refer to HDOT Standard Specification Section 645 for Applicable Traffic Control Plan.

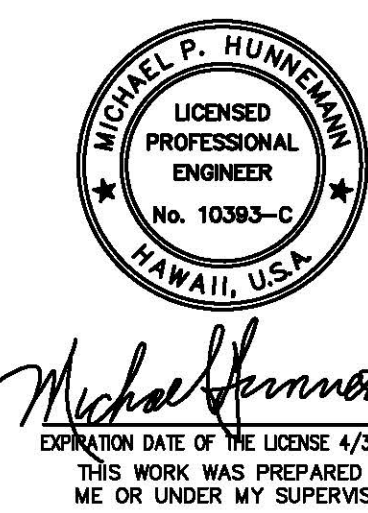
**Clearing and Grubbing:**  
The Contractor Shall Remove All Vegetation Along the Upstream and Downstream Embankment. See Specification Section 201 for Limits of Clearing and Grubbing.



**Note:**  
Elevations Measured in April 2021



- Notes:** 1
- See Repair Notes, Sht. C-1.
  - For Epoxy Adhesive Specification, See Existing Concrete, Note F, Sht. C-1.
  - For Patching Material Specifications, See Sht. C-1.
  - Contractor shall not place fill, including sandbags, below the Mean Higher High Water Line. If the Contractor elects to do so the Contractor shall be responsible for obtaining an Army Corps Section 404 permit reviewed by the Engineer.
  - For Spall Repair Notes, See Sht. C-1E.
  - For Spall Repair Details, See Sht. C-1F.



6/9/23	1 - Added Notes
DATE	REVISION
STATE OF HAWAII HIGHWAYS DIVISION <b>KEHAHA CHANNEL NO. 1 CULVERT</b> MINOR BRIDGE REPAIRS AT VARIOUS LOCATIONS, PART 1 KAUAI, HAWAII PROJECT NO. HWY-K-02-23M Scale: As Shown Date: May 2023	
C-10	SHEET No. 20 OF 41 SHEETS



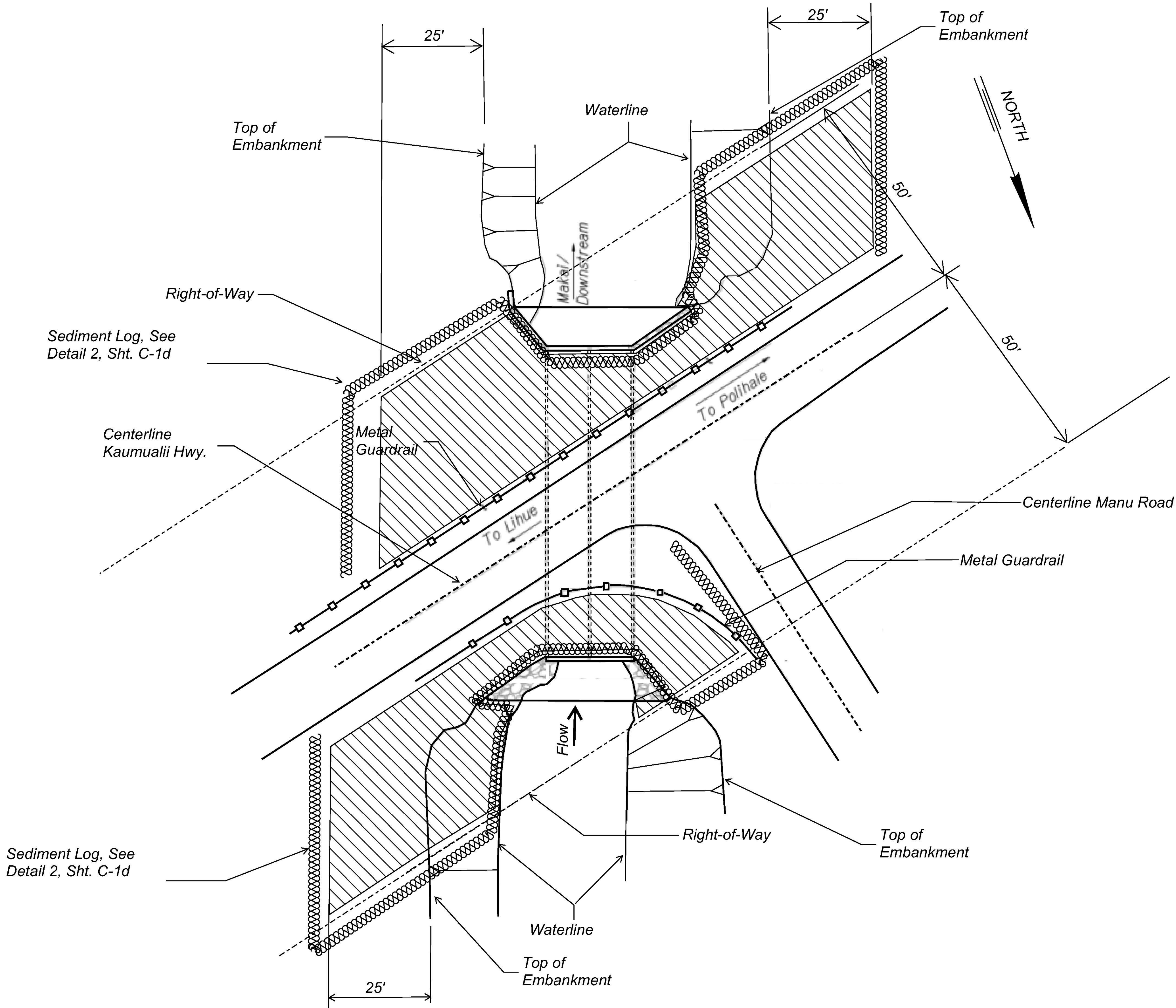
FED. ROAD DIST. NO.	STATE	FED. AID PROJ. NO.	FISCAL YEAR	SHEET NO.	TOTAL SHEETS
KAUAI	HAW.	HWY-K-02-23M	2023	ADD.20S1	41

Clearing and Grubbing:  
The Contractor Shall Remove All Vegetation Down to Existing Ground. Seeding or Planting of New Vegetation is Not Required. See Specification Section 201 Clearing and Grubbing for Additional Information.

LEGEND:

 Limits of Clearing and Grubbing

 Sediment Log



**LIMITS OF CLEARING AND GRUBBING AND BMP PLAN**

Not to Scale



*Michael P. Hunneman*  
EXPIRATION DATE OF THE LICENSE 4/30/2024  
THIS WORK WAS PREPARED BY  
ME OR UNDER MY SUPERVISION

STATE OF HAWAII  
DEPARTMENT OF TRANSPORTATION  
HIGHWAYS DIVISION

**KEHAHA CHANNEL NO. 1  
CULVERT**

MINOR BRIDGE REPAIRS AT  
VARIOUS LOCATIONS, PART 1  
KAUAI, HAWAII  
PROJECT NO. HWY-K-02-23M

Scale: As Shown Date: May 2023

C-10 SHEET No. 20 OF 41 SHEETS