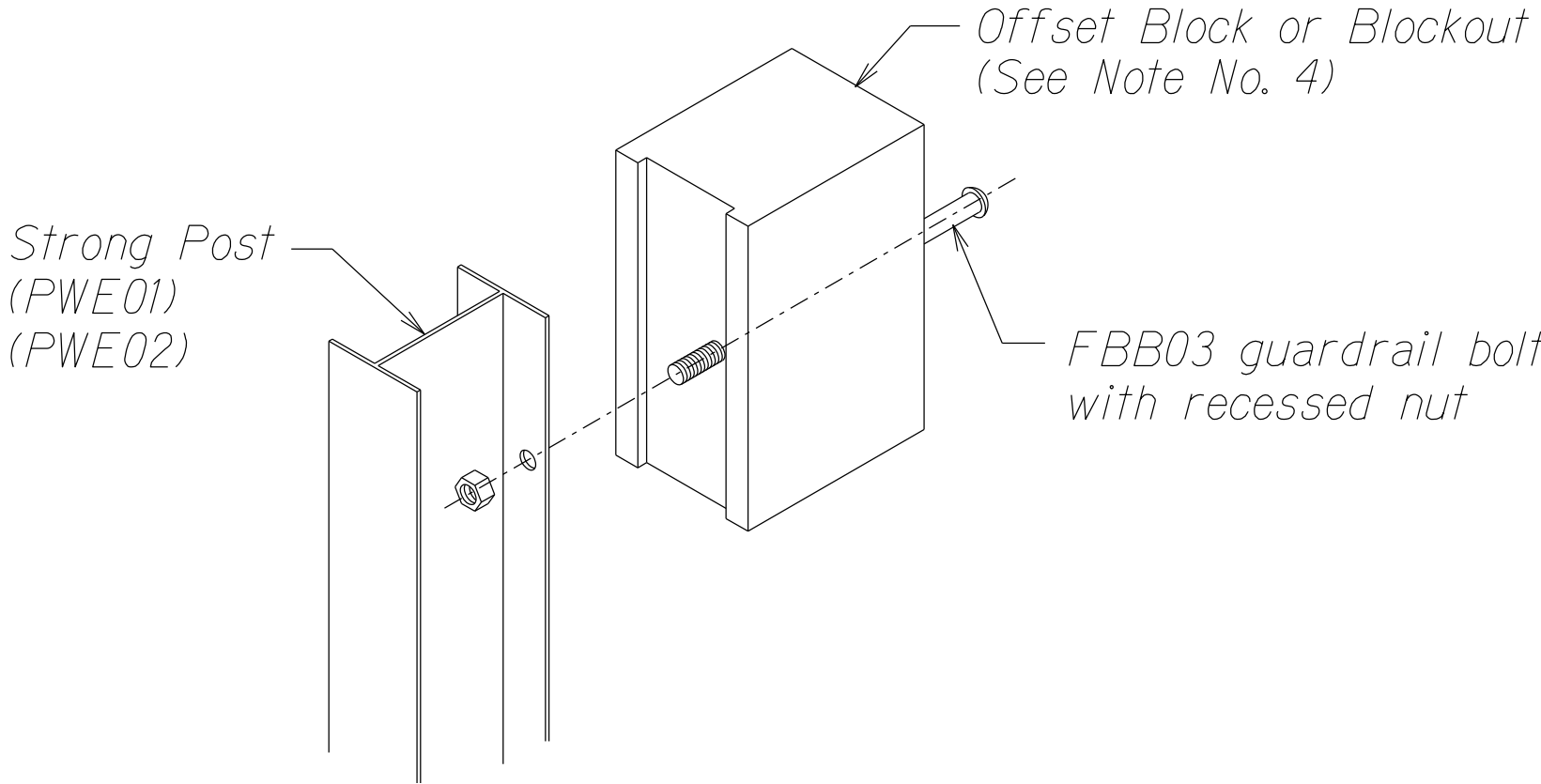


FED. ROAD DIST. NO.	STATE	FED. AID PROJ. NO.	FISCAL YEAR	SHEET NO.	TOTAL SHEETS
HAWAII	HAW.	STP-0700(086)	2021	10	17

GENERAL NOTES

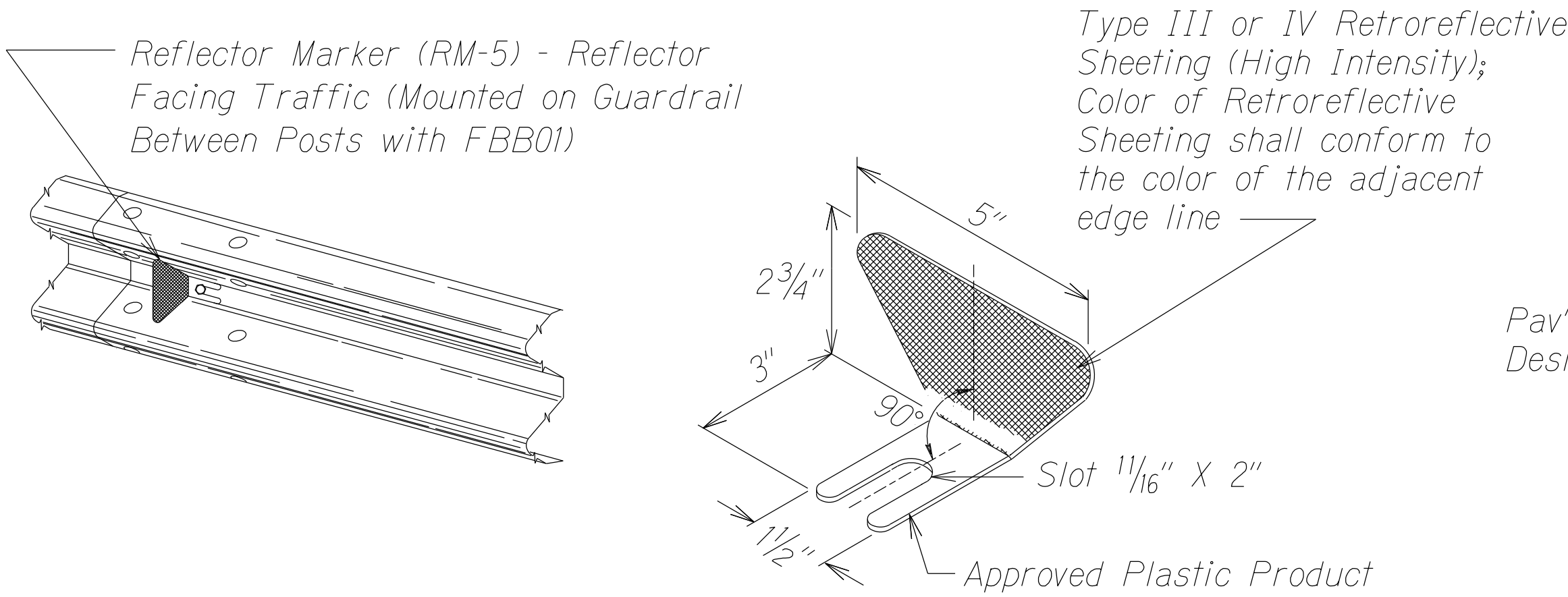
1. All hardware, posts and fasteners shall be hot-dip zinc coated galvanized after fabrication. No punching, drilling or cutting will be permitted after galvanizing.
2. Where conditions require, special post lengths in increments of 6 inches may be specified by the Engineer.
3. All fasteners, posts, and rail elements (i.e. FBB03, PWE01, RWM04b, etc.) shall conform to the latest edition and amendments of "A Guide to Standardized Highway Barrier Rail Hardware", a report prepared and approved by the AASHTO-AGC-ARTBA Joint Cooperative Committee, Subcommittee On New Highway Materials, Task Force 13 Report. Dimensions of fastners, posts and rail elements have been converted from metric units into their present form.
4. The Blockout or Offset Block shall be approved by the State.
5. All new guardrail systems (system consists of total length of guardrail including both end treatments) shall include the Additional Paved Area.
6. After the guardrail posts are installed in the paved area, the Contractor shall fill/seal around each guardrail post and all cracks in the paved area caused during the guardrail post installation. If required by the inspector/engineer, the Contractor shall tamper the paved area around the guardrail post prior to filling/sealing. All costs associated with this work shall not be paid for separately, but shall be considered incidental to the various guardrail items.
7. When standards for the fill slope area cannot be met, a site specific, engineer approved design may be used.
8. Minimum working width (clear distance) between back of MGS post to any fixed object is 4'-1" (49").
9. New Hot Mix Asphalt (HMA) pavement at guardrails shall extend 6 feet longitudinally beyond terminal ends.
10. Reflector Markers (RM-5) mounted on guardrails shall be spaced every 25 feet. RM-5's shall not be installed on Terminal Sections. Furnishing and installing of each RM-5 shall be considered incidental to the guardrail system.

GUARDRAIL TYPE	DIMENSION	
	H	A
MGS w/ Standard 8" Offset Block	2'-1"	1'-6"
MGS w/ No Blockout	2'-7/8"	9/4"

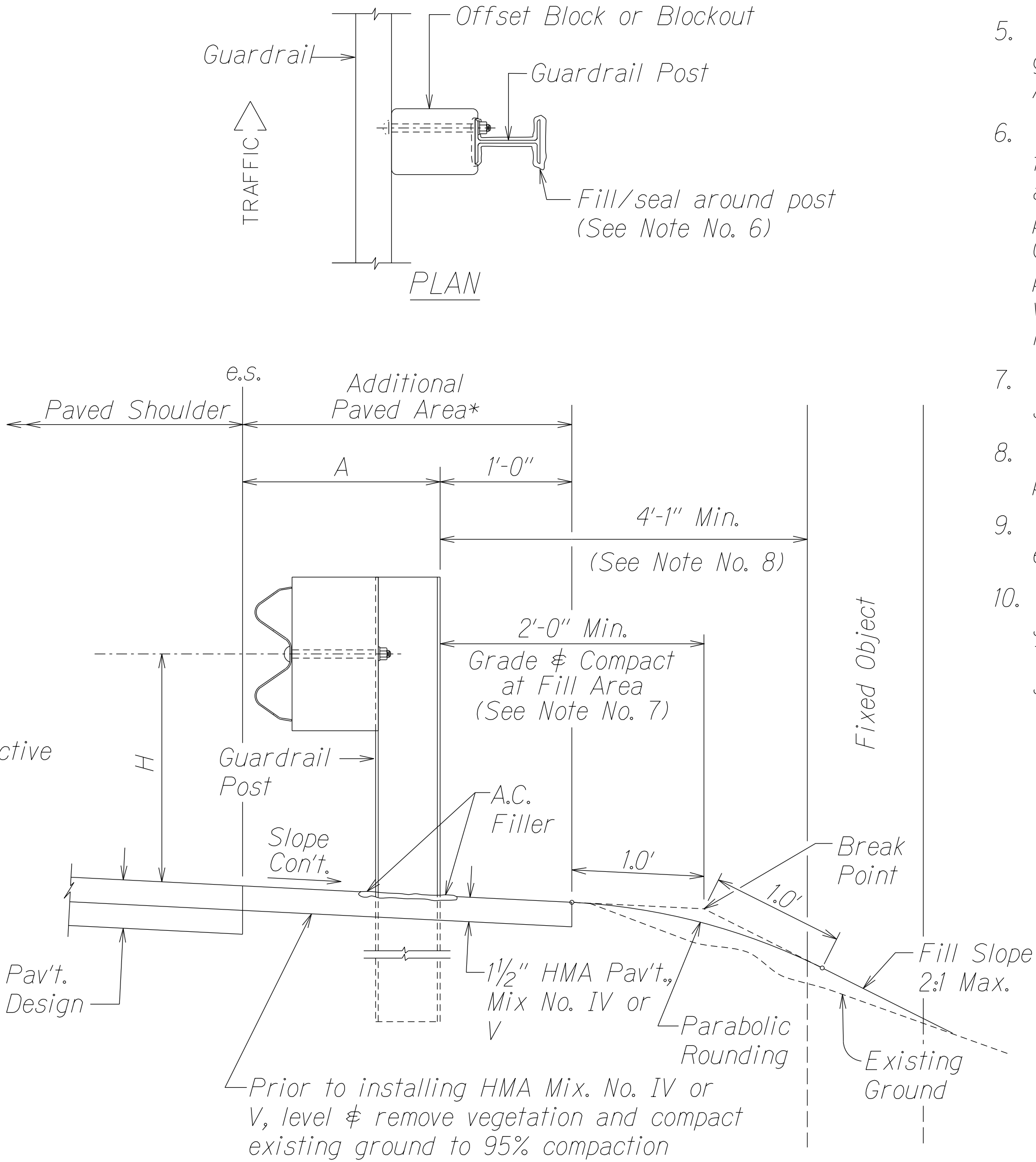


Exploded View
(Rail and washer not shown)

STEEL POST AND BLOCK DETAIL



REFLECTOR MARKER (RM-5) DETAIL AND TYPICAL INSTALLATION



ELEVATION

TYPICAL GUARDRAIL INSTALLATION



STATE OF HAWAII
DEPARTMENT OF TRANSPORTATION
HIGHWAYS DIVISION

GUARDRAIL DETAILS & NOTES

GUARDRAIL & SHOULDER IMPROVEMENTS
AT VARIOUS LOCATIONS, PART 6
Federal-Aid Project No. STP-0700(086)

Scale: NTS
Date: May 2021

SHEET No. 1 OF 5 SHEETS