

FED. ROAD DIST. NO.	STATE	FED-AID PROJ. NO.	FISCAL YEAR	SHEET NO.	TOTAL SHEETS
HAWAII	HAW.	STP-0700(063)	2013	14	21

GENERAL NOTES

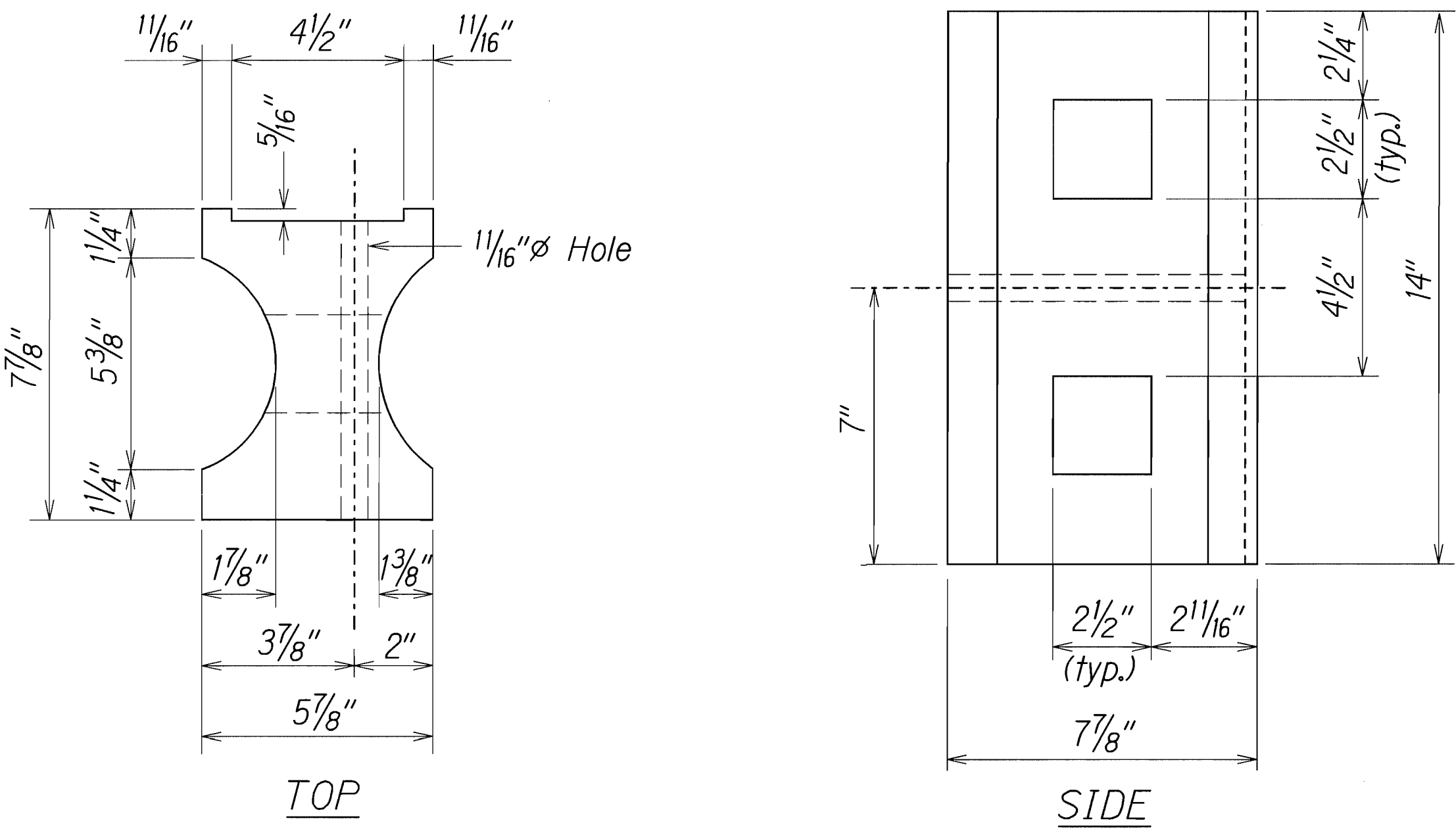
1. All hardware, posts and fasteners shall be hot-dip zinc coated galvanized after fabrication. No punching, drilling or cutting will be permitted after galvanizing.
2. Where conditions require, special post lengths in increments of 6 inches may be specified.
3. All fasteners, posts, and rail elements (i.e. FBB03, PWE01, RWM02b, etc.) shall conform to the latest edition and amendments of "A Guide to Standardized Highway Barrier Rail Hardware", a report prepared and approved by the AASHTO-AGC-ARTBA Joint Cooperative Committee, Subcommittee On New Highway Materials, Task Force 13 Report. Dimensions of fastners, posts and rail elements have been converted from metric units into their present form.
4. The Recycled Plastic Block or Offset Block shall be approved by the State.
5. All new guardrail systems (system consists of total length of guardrail including both end treatments) shall include the Additional Paved Area.
6. After the guardrail posts are installed in the paved area, the Contractor shall fill/seal around each guardrail post and all cracks in the paved area caused during the guardrail post installation. The Contractor shall compact the paved area around the guardrail post prior to filling/sealing. All costs associated with this work shall not be paid for separately, but shall be considered incidental to the various guardrail items.
7. When standards for the fill slope area cannot be met, a site specific, engineer approved design may be used.
8. New A.C. pavement at guardrails shall extend 6 feet longitudinally beyond terminal ends.
9. Reflector Markers (RM-5) mounted on guardrails shall be spaced every 25 feet. RM-5's shall not be installed on Terminal Sections. Furnishing and installing of each RM-5 shall be considered incidental to the adjacent guardrail system. RM-5 shall be either galvanized steel or plastic.
10. Asphalt concrete pavement shall be constructed prior to installation of guardrail.
11. Dress and hydro-mulch fill/cut areas and shall be considered incidental to the various contract items.

GUARDRAIL TYPE	DIMENSION
	H
Strong Post W-Beam	1'-9 ⁵ / ₈ "
Strong Post Rubrail (W-Beam)	2'-0"
Modified or Strong Post Thrie Beam	2'-0"

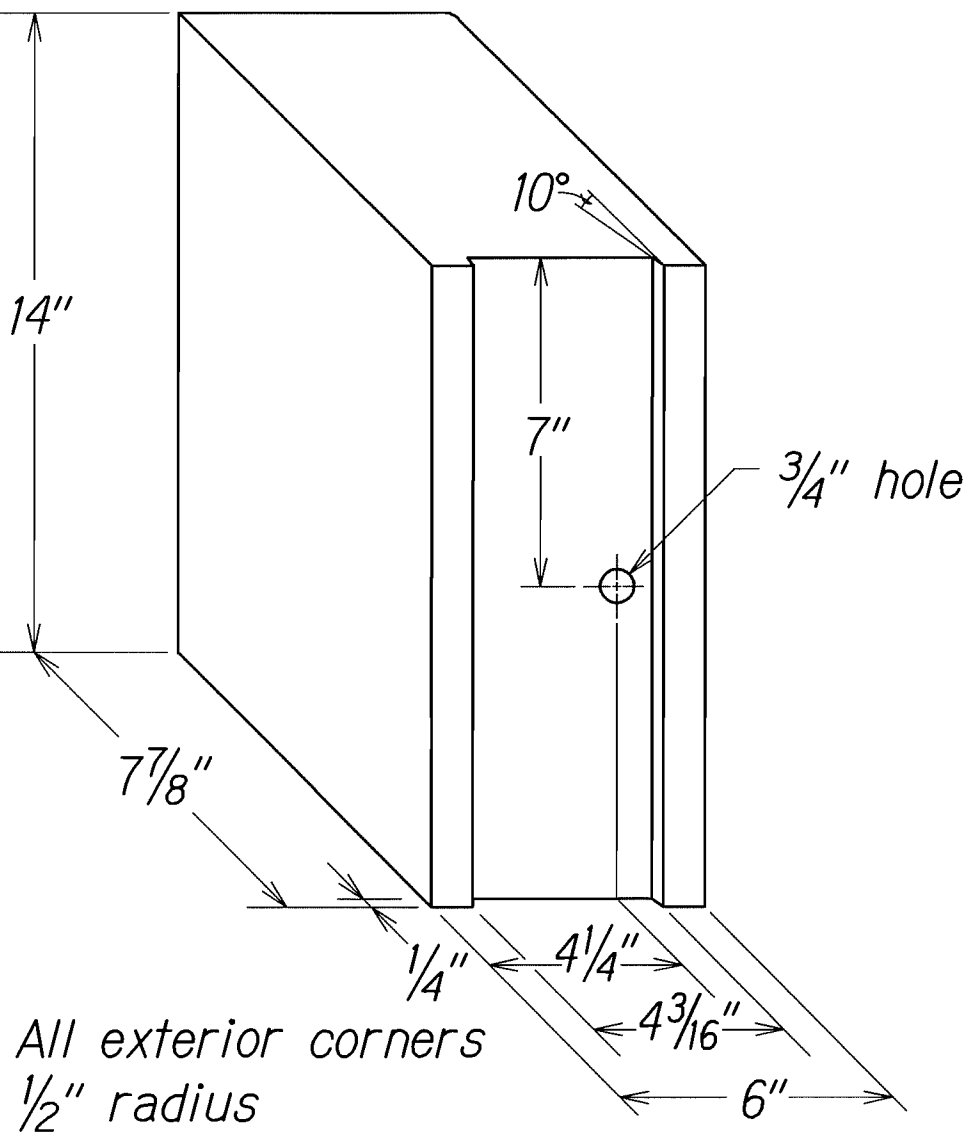
STATE OF HAWAII
DEPARTMENT OF TRANSPORTATION
HIGHWAYS DIVISION

GUARDRAIL DETAILS & NOTES
GUARDRAIL AND SHOULDER IMPROVEMENTS
AT VARIOUS LOCATIONS
Kaunualii Highway and Kuamoo Road
Fed-Aid Project No. STP-0700(063)
Scale: Not to scale Date: July 2012

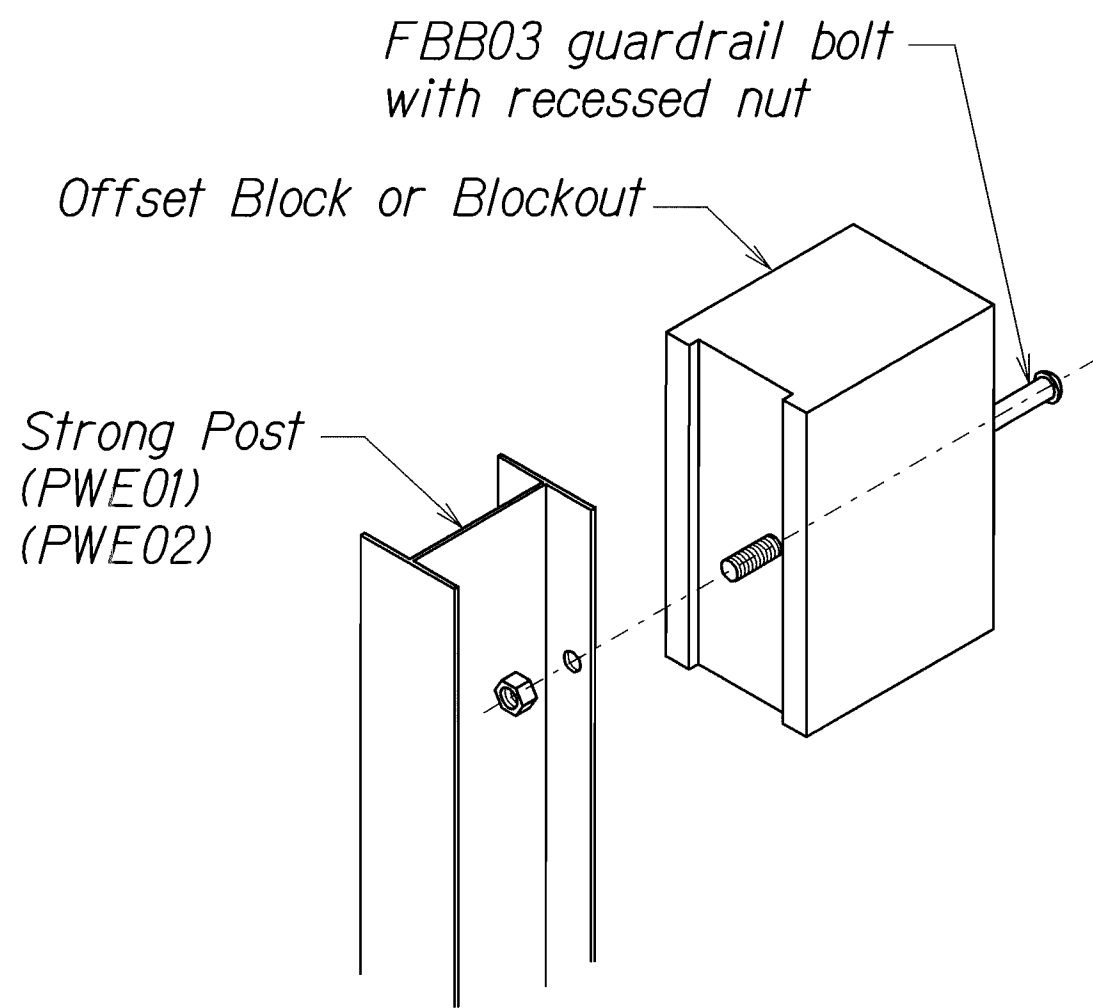
SHEET No. 1 OF 6 SHEETS



RECYCLED PLASTIC BLOCKOUT (TYPE I)

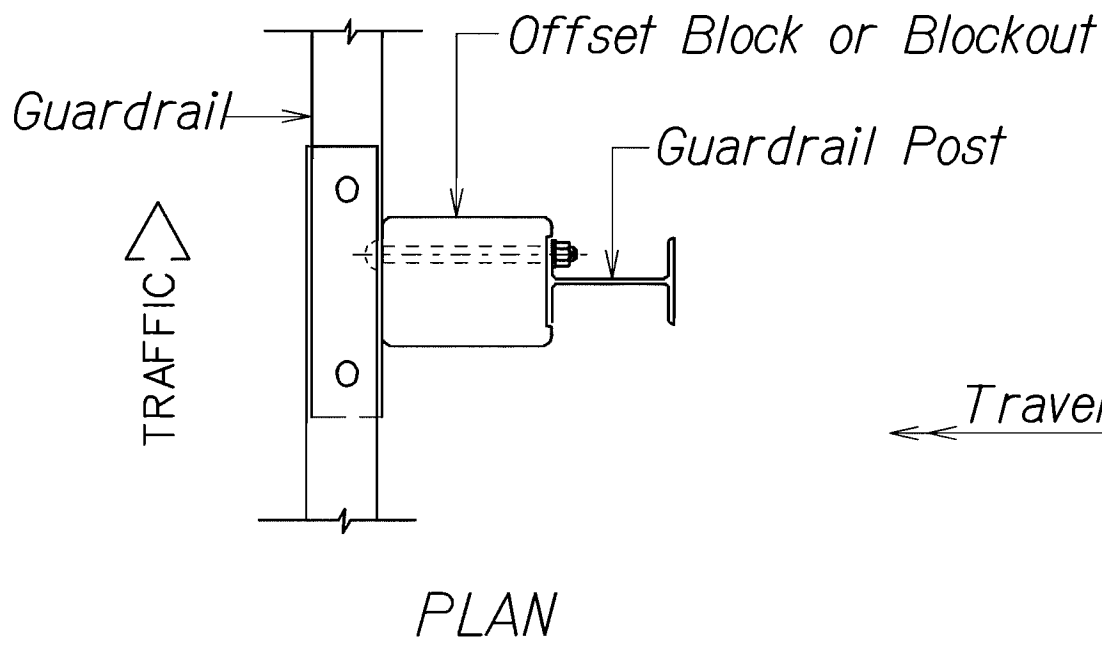


RECYCLED POLYETHYLENE
OFFSET BLOCK (TYPE II)

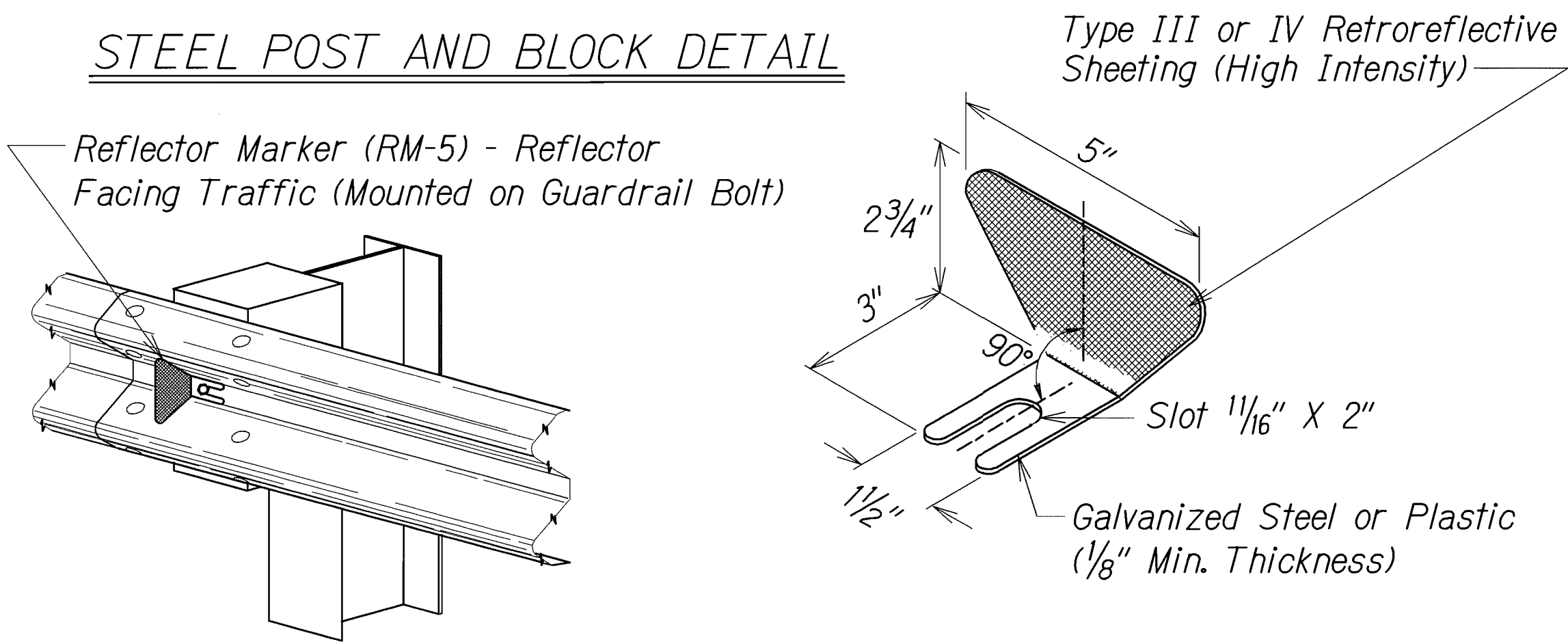


Exploded View
(Rail and washer not shown)

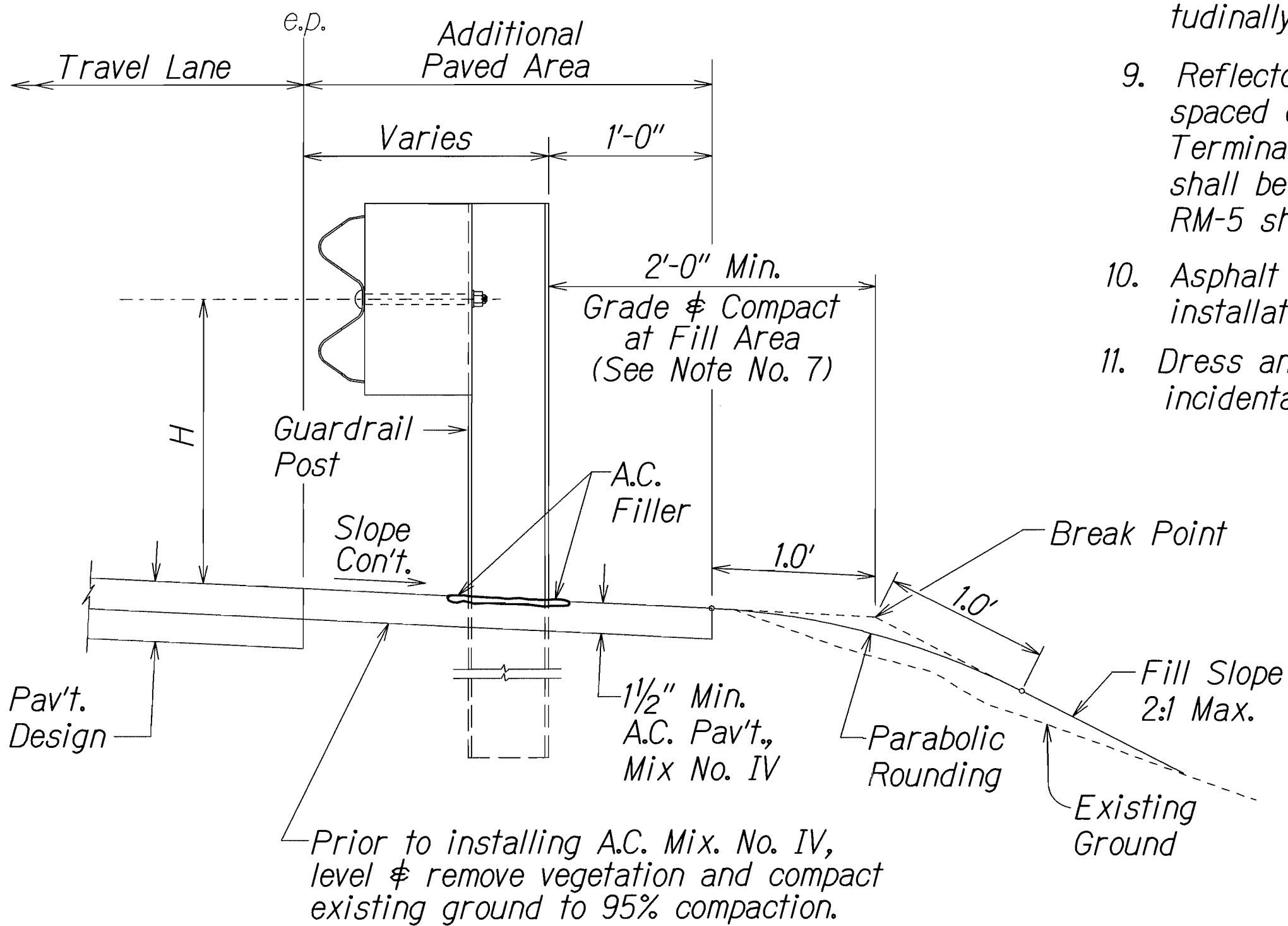
STEEL POST AND BLOCK DETAIL



PLAN



REFLECTOR MARKER (RM-5) DETAIL AND TYPICAL INSTALLATION



ELEVATION

TYPICAL GUARDRAIL INSTALLATION

DESIGNED BY	DATE
TRACED BY	11/11
NOTED BY	
QUANTITIES BY	
CHECKED BY	
ORIGINAL PLAN	