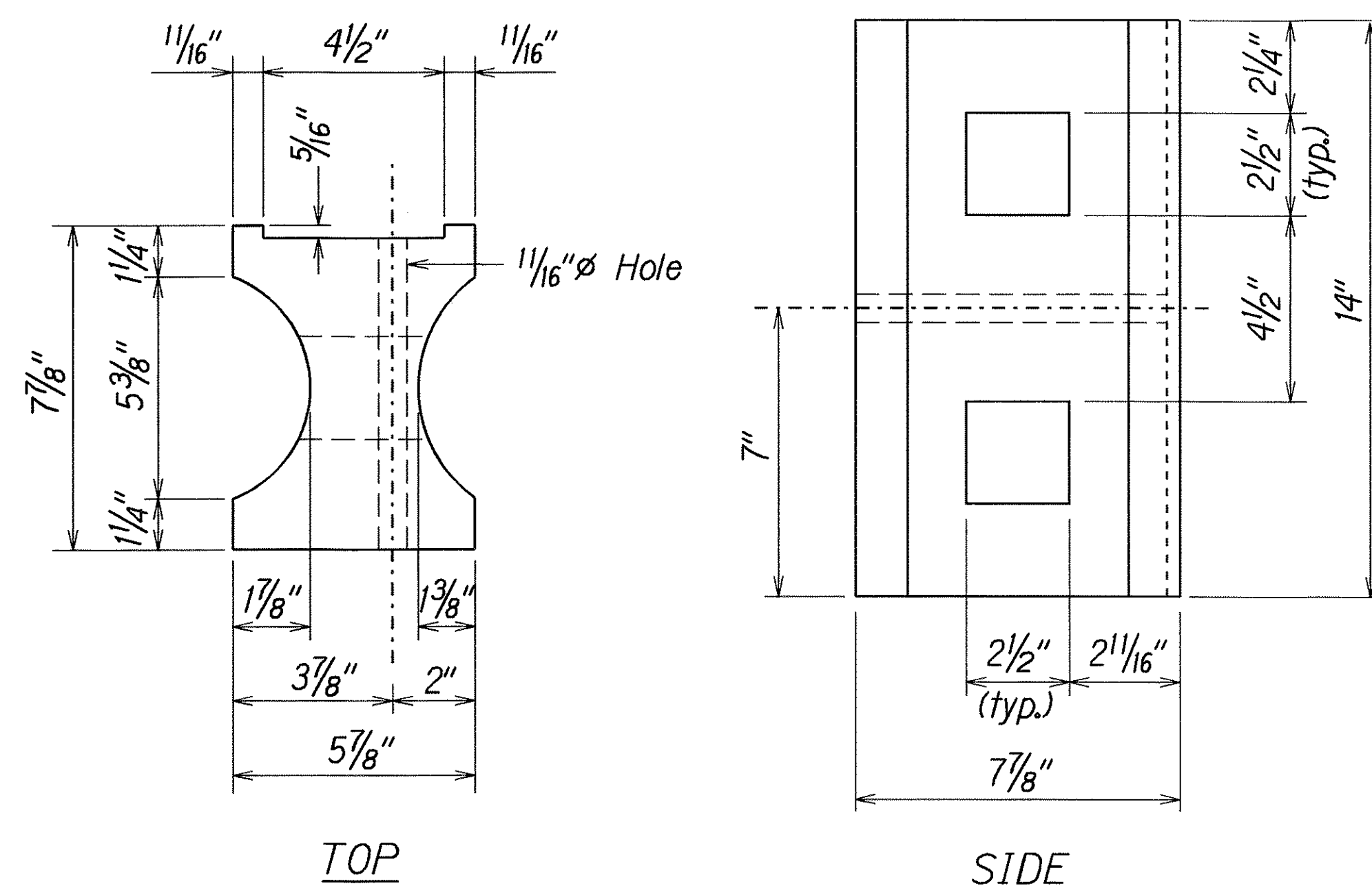


FED. ROAD DIST. NO.	STATE	FED. AID PROJ. NO.	FISCAL YEAR	SHEET NO.	TOTAL SHEETS
HAWAII	HAW.	STP-0700(58)	2006	21	32

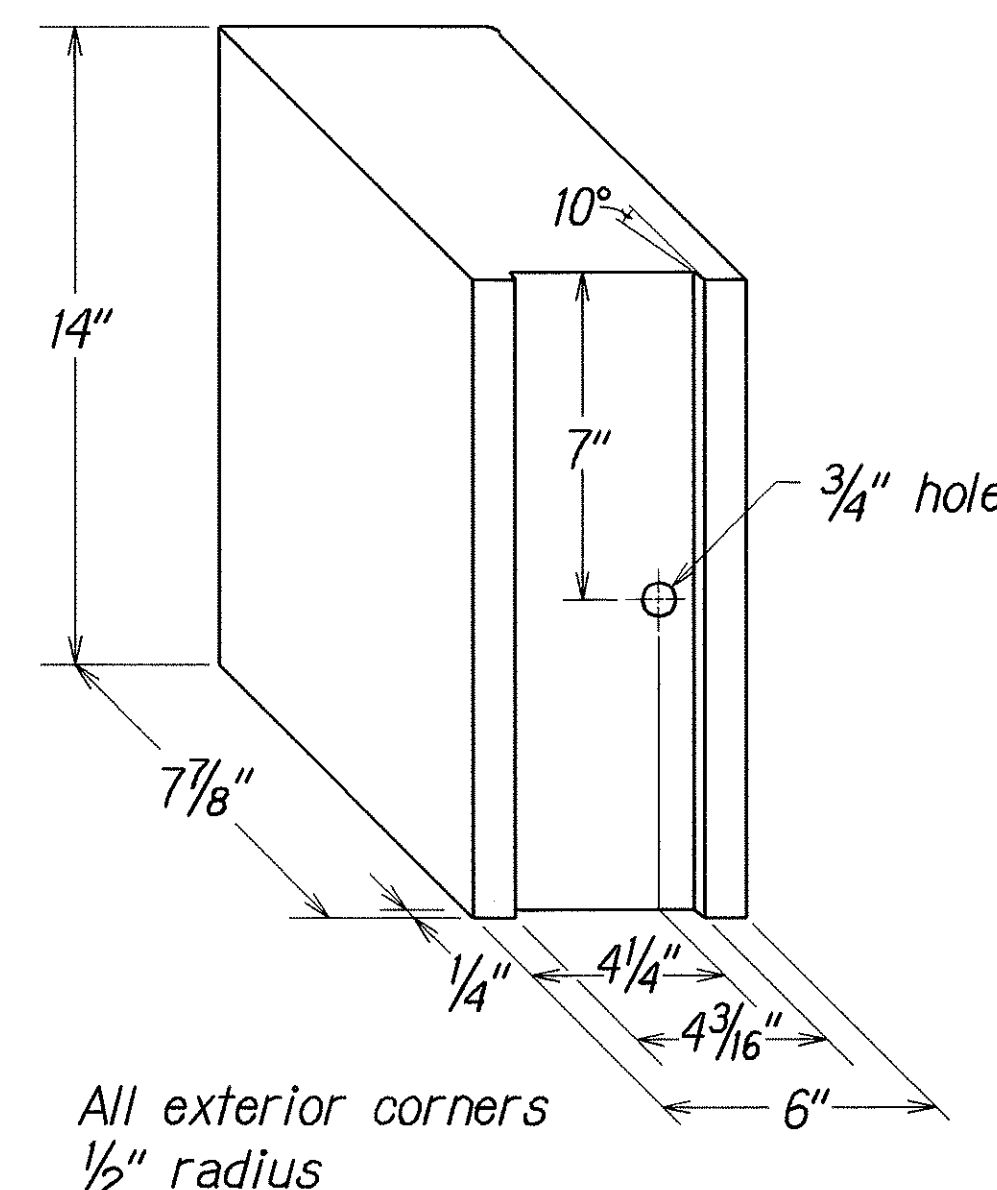
GENERAL NOTES

- All hardware, posts and fasteners shall be hot-dip zinc coated galvanized after fabrication. No punching, drilling or cutting will be permitted after galvanizing.
- Where conditions require, special post lengths in increments of 6 inches may be specified.
- All fasteners, posts, and rail elements (i.e. FBB03, PWE01, RWM02b, etc.) shall conform to the latest edition and amendments of "A Guide to Standardized Highway Barrier Rail Hardware", a report prepared and approved by the AASHTO-AGC-ARTBA Joint Cooperative Committee, Subcommittee On New Highway Materials, Task Force 13 Report. Dimensions of fastners, posts and rail elements have been converted from metric units into their present form.
- The Recycled Plastic Block or Offset Block shall be approved by the State.
- All new guardrail systems (system consists of total length of guardrail including both end treatments) shall include the Additional Paved Area.
- After the guardrail posts are installed in the paved area, the Contractor shall fill/seal around each guardrail post and all cracks in the paved area caused during the guardrail post installation. If required by the inspector/engineer, the Contractor shall tamper the paved area around the guardrail post prior to filling/sealing. All costs associated with this work shall not be paid for separately, but shall be considered incidental to the various guardrail items.
- When standards for the fill slope area cannot be met, a site specific, engineer approved design may be used.
- New A.C. pavement at guardrails shall extend 6 feet longitudinally beyond terminal ends.
- Reflector Markers (RM-5) mounted on guardrails shall be spaced every 25 feet. RM-5's shall not be installed on Terminal Sections. Furnishing and installing of each RM-5 shall be considered incidental to the adjacent guardrail system.
- At the Contractor's option, AC paving under guardrail can be placed after installation of guardrail.

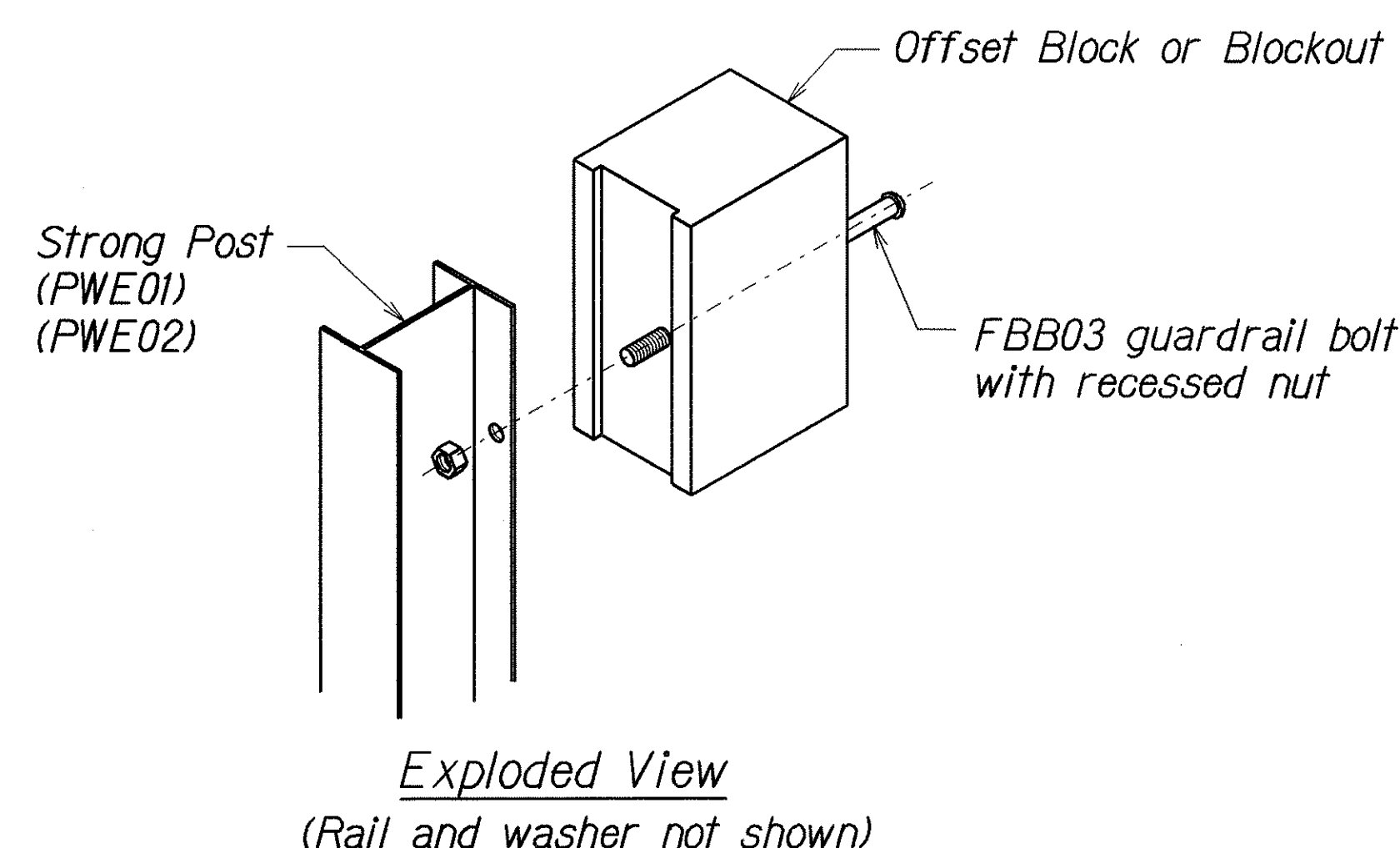
GUARDRAIL TYPE	DIMENSION	
	H	A
Strong Post W-Beam	1'-9 ⁵ / ₈ "	1'-6"
Strong Post Rubrail (W-Beam)	2'-0"	1'-6"
Modified or Strong Post Thrie Beam	2'-0"	2'-0"



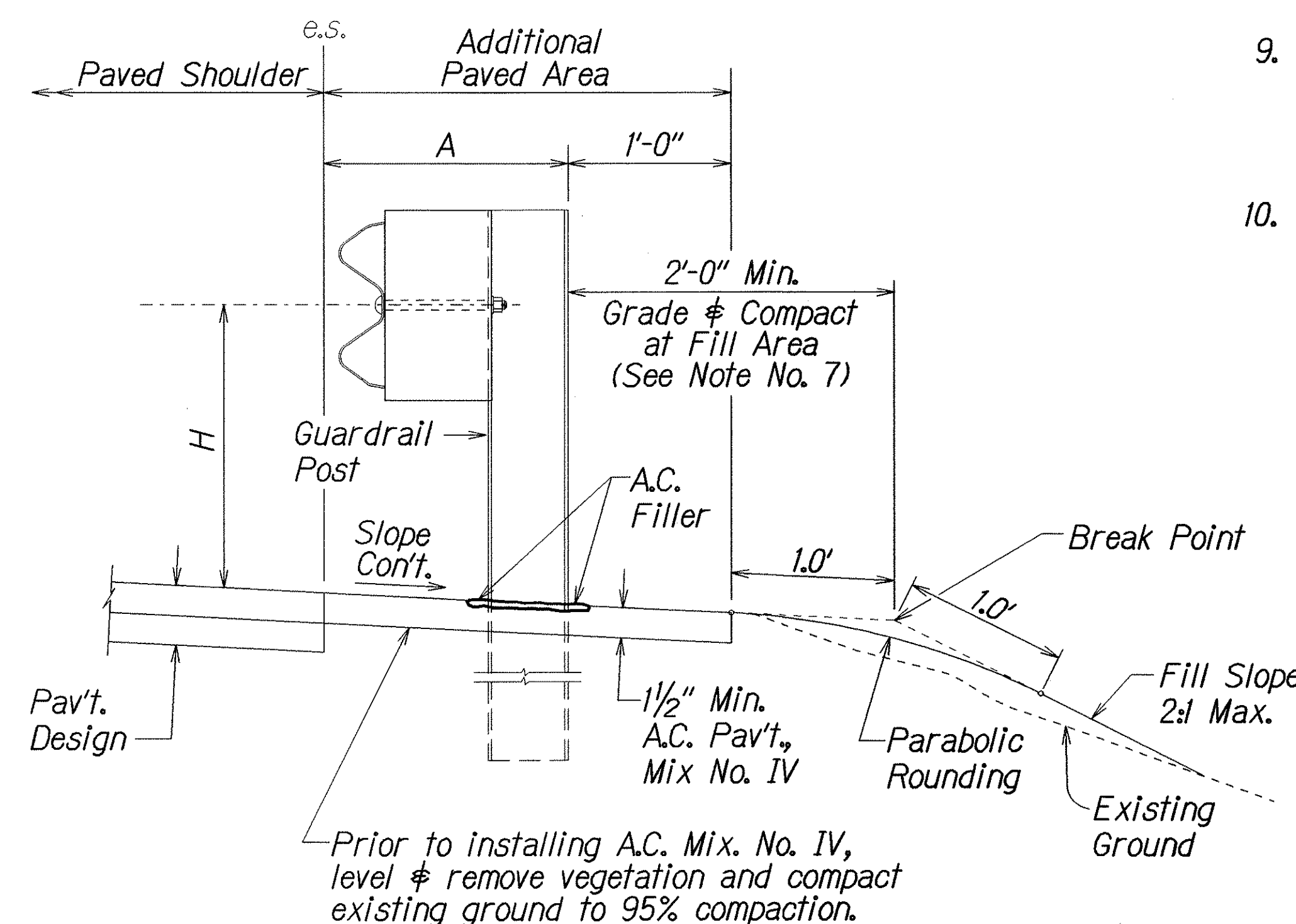
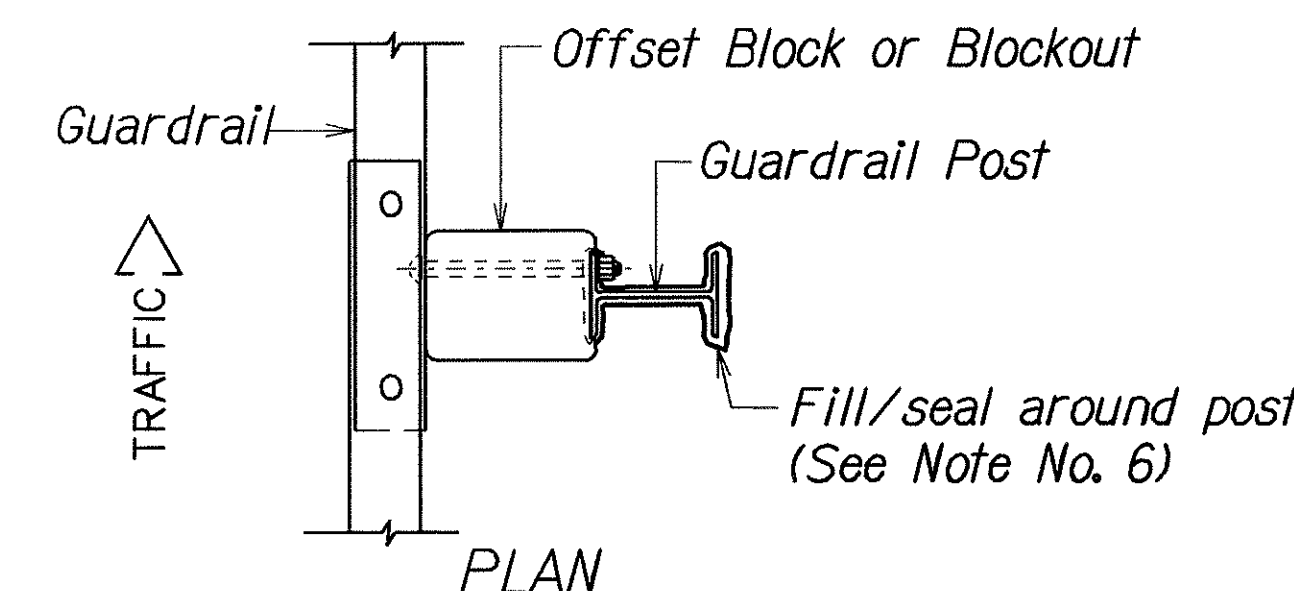
TOP
SIDE
RECYCLED PLASTIC BLOCKOUT (TYPE I)



All exterior corners
1/2" radius
RECYCLED POLYETHYLENE
OFFSET BLOCK (TYPE II)

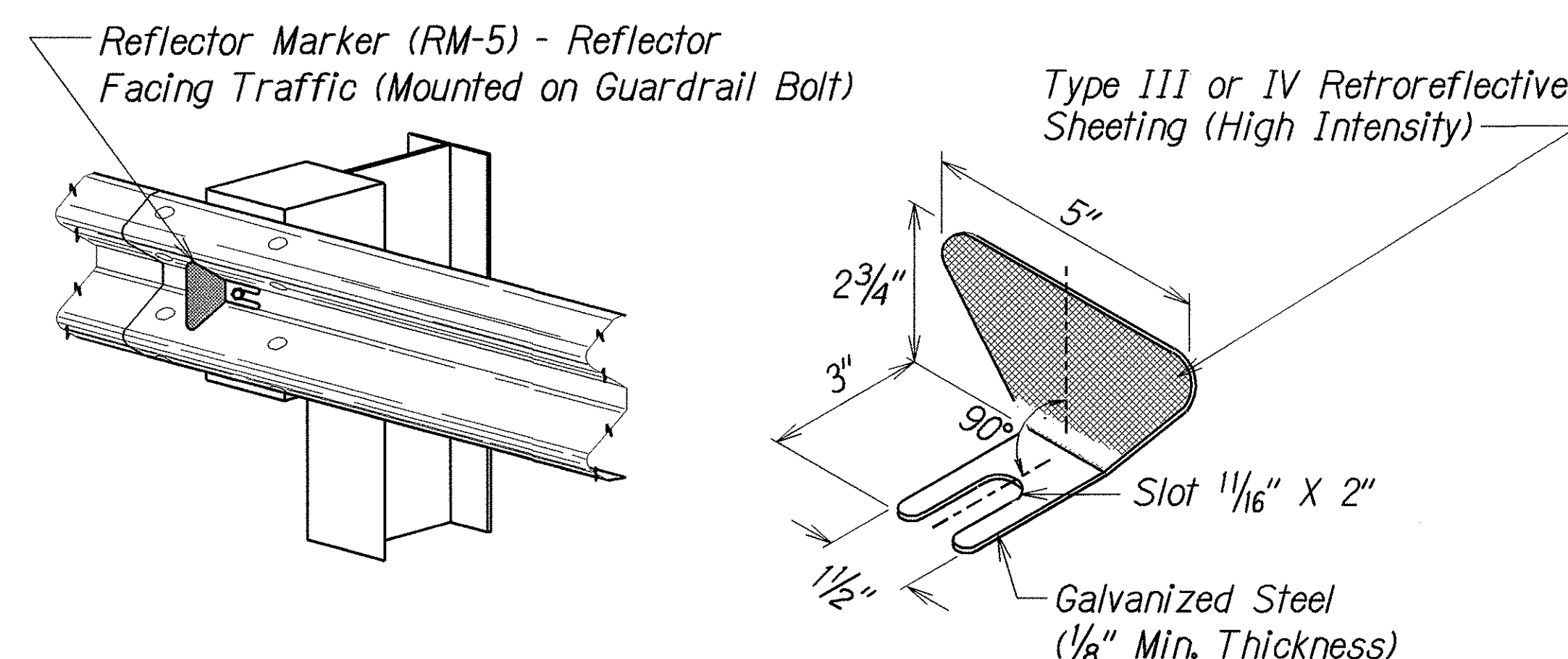


STEEL POST AND BLOCK DETAIL



ELEVATION

TYPICAL GUARDRAIL INSTALLATION



REFLECTOR MARKER (RM-5) DETAIL AND TYPICAL INSTALLATION

SURVEY PLOTTED BY	DATE
DRAWN BY	1/10
TRACED BY	
CHECKED BY	
ORIGINAL PLAN	
NOTE BOOK	
REVISION	
CHECKED BY	

STATE OF HAWAII
DEPARTMENT OF TRANSPORTATION
HIGHWAYS DIVISION

GUARDRAIL DETAILS & NOTES

KUHIO HIGHWAY, KUAMOO ROAD & KOKEE ROAD
Guardrail and Shoulder Improvements
at Various Locations
Federal-Aid Project No. STP-0700(58)

Scale: Not to Scale Date: July 2006

SHEET No. 1 OF 11 SHEETS