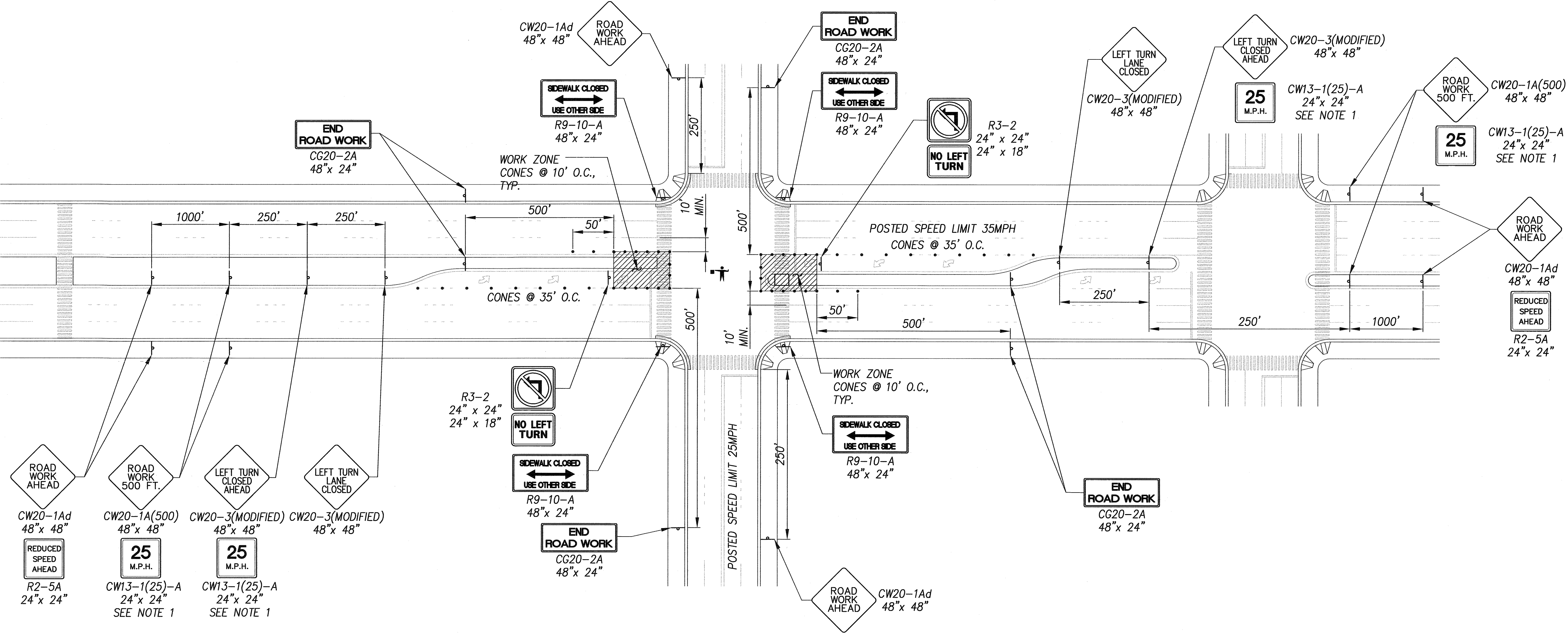


FED. ROAD DIST. NO.	STATE	FED. AID PROJ. NO.	FISCAL YEAR	SHEET NO.	TOTAL SHEETS
HAWAII	HAW.	CMAQ-0700(50)R	2004	76	100



LEGEND

CONSTRUCTION SIGN

POLICE OFFICER

CONES

FLASHING ARROW SIGN

TRAFFIC CONTROL PLAN – CROSS INTERSECTION, DIVIDED HWY. – PHASE 3

SCALE: NTS

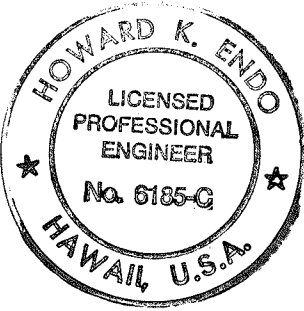
NOTES:

1. FOR POSTED SPEED OF 35MPH ONLY. FOR AREAS W/ POSTED SPEED OF 45MPH, USE CW13-1(35)-A (35MPH CONSTRUCTION ZONE SPEED LIMIT)

2. SIGN SPACING, TAPER AND BUFFER LENGTHS SHALL BE IN ACCORDANCE TO EITHER THE STD. SPEC. SECTION 645, STATE OF HAWAII DEPT. OF TRANSPORTATION, HIGHWAYS DIVISION OR THE MANUAL ON UNIFORM TRAFFIC CONTROL DEVICES (MUTCD), 2000 ED. THE CONTRACTOR SHALL APPLY THE STRICTER OF THE TWO.

ORIGINAL PLAN	SURVEY PLOTTED BY	DATE
NOTE BOOK	DRAWN BY	
	DESIGNED BY	
	CHECKED BY	

0351-TCP-03.dwg



EXPIRATION DATE: 4/30/06

THIS WORK WAS PREPARED BY ME OR UNDER MY SUPERVISION AND CONSTRUCTION OF THIS PROJECT WILL BE UNDER MY OBSERVATION.

Signature

DATE

"OBSERVATION OF CONSTRUCTION" IS DEFINED IN CHAPTER 16-115, HAWAII ADMINISTRATIVE RULES ENTITLED "PROFESSIONAL ENGINEERS, ARCHITECTS, SURVEYORS AND LANDSCAPE ARCHITECTS".

STATE OF HAWAII
DEPARTMENT OF TRANSPORTATION
HIGHWAYS DIVISION

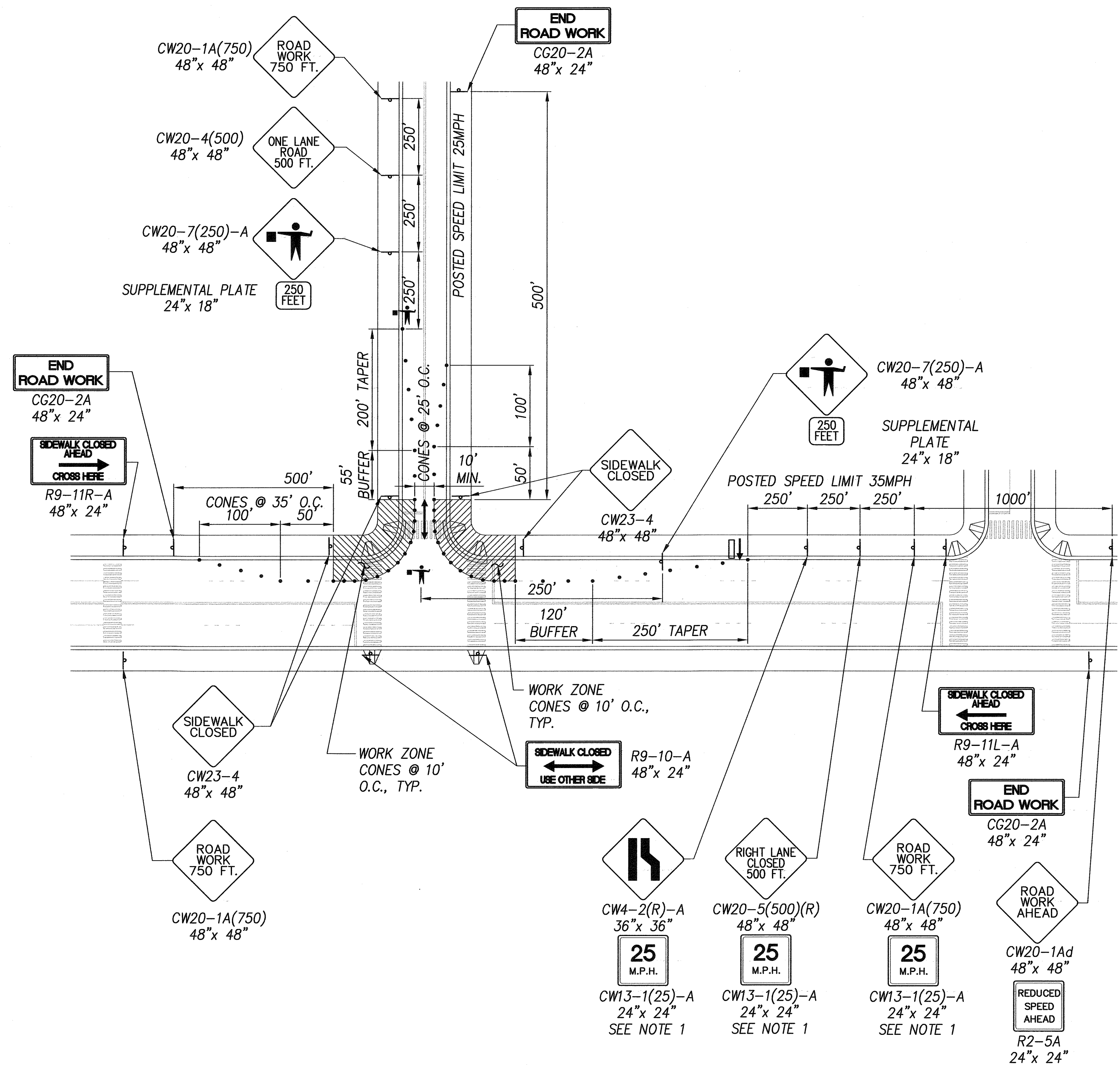
TYPICAL TRAFFIC
CONTROL PLAN – 3

Pedestrian Facilities & ADA Compliance
at Various Locations on Kaua'i
Fed. Aid Proj. No. CMAQ-0700(50)R

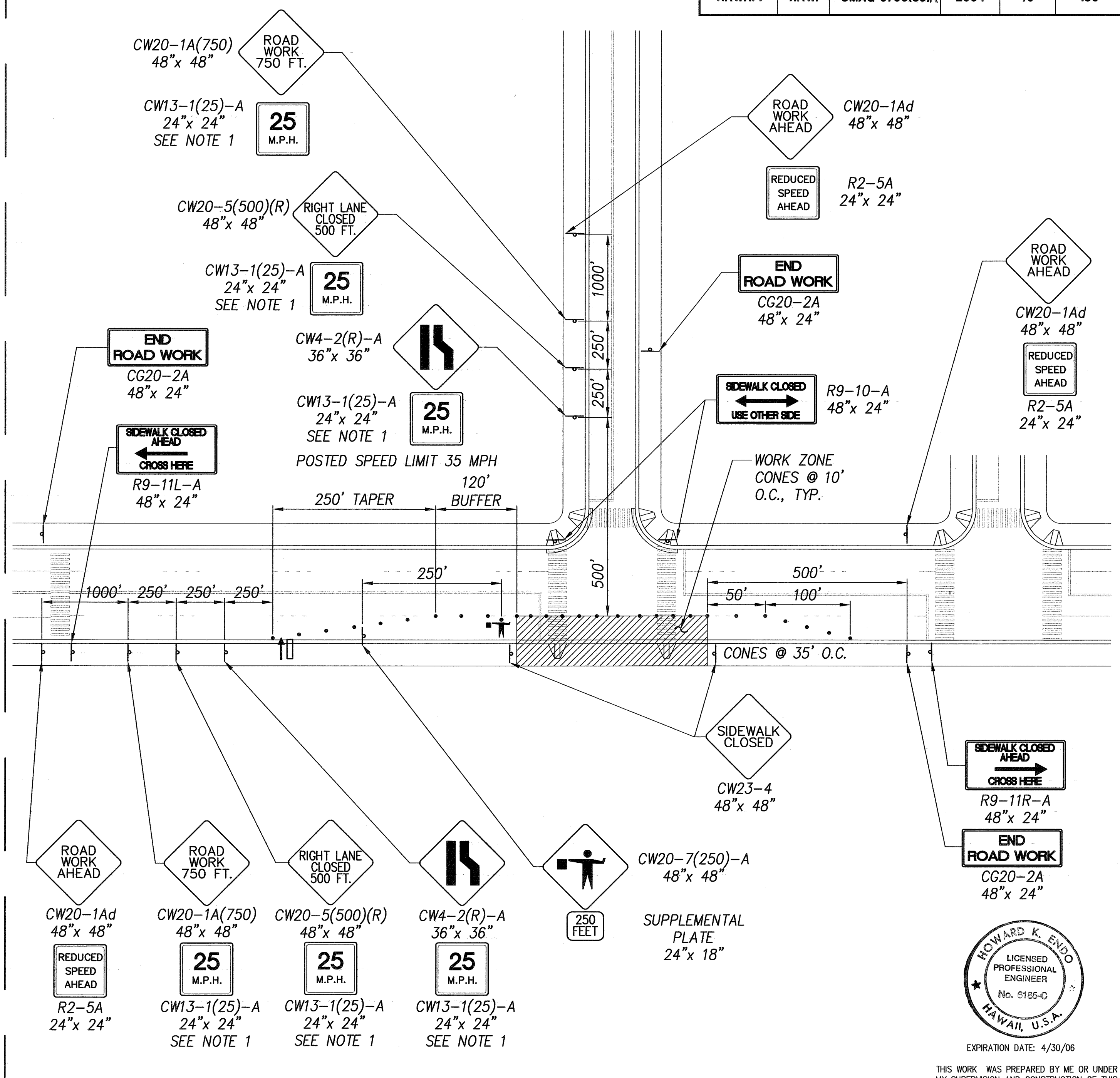
Scale: AS NOTED Date: AUG. 13, 2004

SHEET No. 3 OF 6 SHEETS

FED. ROAD DIST. NO.	STATE	FED. AID PROJ. NO.	FISCAL YEAR	SHEET NO.	TOTAL SHEETS
HAWAII	HAW.	CMAQ-0700(50)R	2004	79	100



TRAFFIC CONTROL PLAN –
TEE INTERSECTION, UNDIVIDED HWY. – PHASE 1
SCALE: NTS



TRAFFIC CONTROL PLAN –
TEE INTERSECTION, UNDIVIDED HWY. – PHASE 2
SCALE: NTS

- LEGEND
- CONSTRUCTION SIGN
 - POLICE OFFICER
 - CONES
 - FLASHING ARROW SIGN

- NOTES:
- FOR POSTED SPEED OF 35MPH ONLY. FOR AREAS W/ POSTED SPEED OF 45MPH, USE CW13-1(35)-A (35MPH CONSTRUCTION ZONE SPEED LIMIT)
 - SIGN SPACING, TAPER AND BUFFER LENGTHS SHALL BE IN ACCORDANCE TO EITHER THE STD. SPEC. SECTION 645, STATE OF HAWAII DEPT. OF TRANSPORTATION, HIGHWAYS DIVISION OR THE MANUAL ON UNIFORM TRAFFIC CONTROL DEVICES (MUTCD), 2000 ED. THE CONTRACTOR SHALL APPLY THE STRICTER OF THE TWO.

HOWARD K. ENDO
LICENSED PROFESSIONAL ENGINEER
No. 6185-C
HAWAII, U.S.A.
EXPIRATION DATE: 4/30/06

THIS WORK WAS PREPARED BY ME OR UNDER MY SUPERVISION AND CONSTRUCTION OF THIS PROJECT WILL BE UNDER MY OBSERVATION.
Signature: Howard K. Endo
Date: 9/22/04
"OBSERVATION OF CONSTRUCTION" IS DEFINED IN CHAPTER 16-115, HAWAII ADMINISTRATIVE RULES ENTITLED "PROFESSIONAL ENGINEERS, ARCHITECTS, SURVEYORS AND LANDSCAPE ARCHITECTS".

STATE OF HAWAII
DEPARTMENT OF TRANSPORTATION
HIGHWAYS DIVISION
TYPICAL TRAFFIC CONTROL PLAN – 6
Pedestrian Facilities & ADA Compliance
at Various Locations on Kaa'i
Fed. Aid Proj. No. CMAQ-0700(50) R
Scale: AS NOTED Date: AUG. 13, 2004
SHEET No. 6 OF 6 SHEETS

DATE	_____
SURVEY PLOTTED BY	_____
DRAWN BY	_____
DESIGNED BY	_____
CHECKED BY	_____
ORIGINAL PLAN	_____
NOTE BOOK	_____
No.	_____

0351-TCP-06.dwg