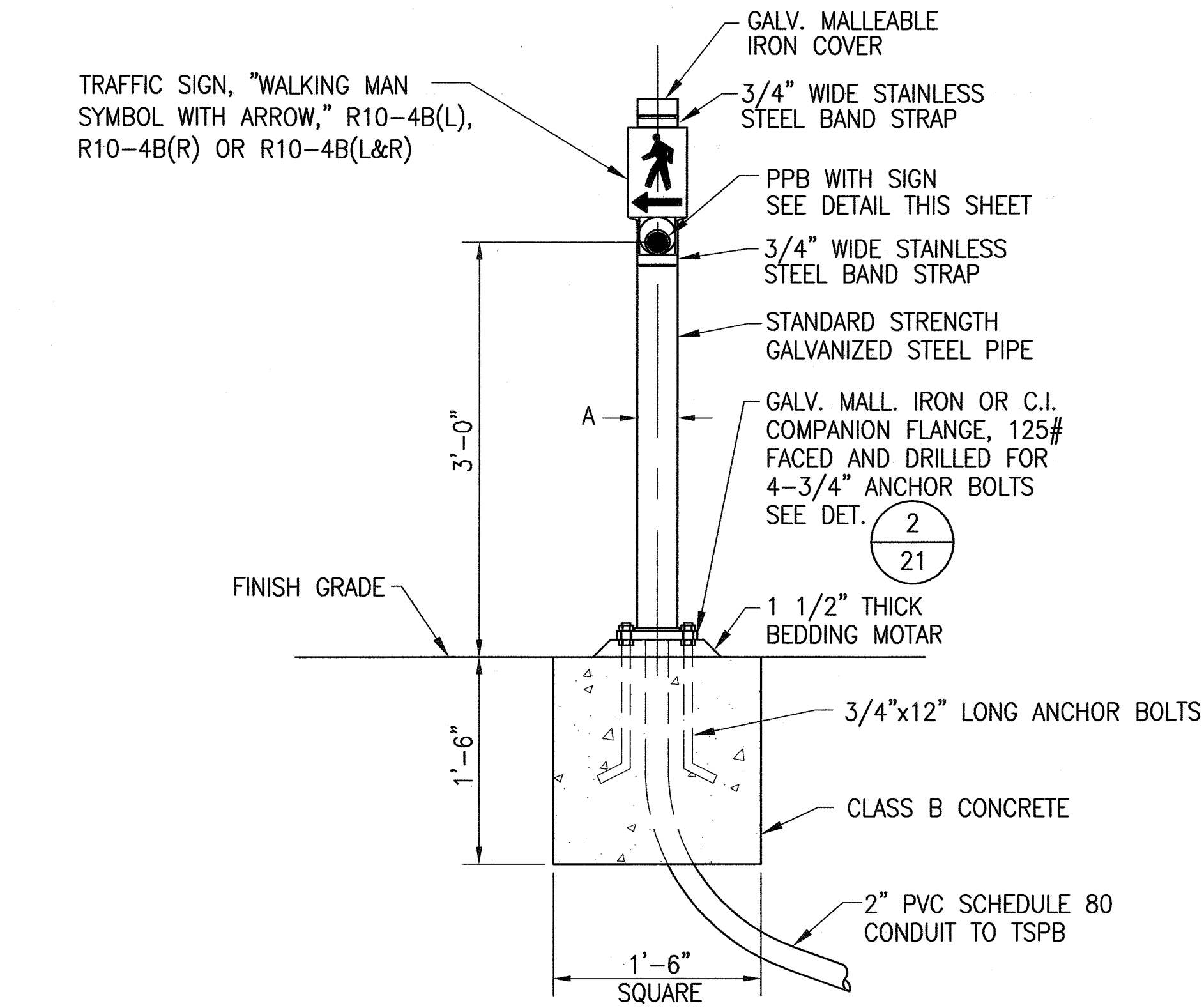
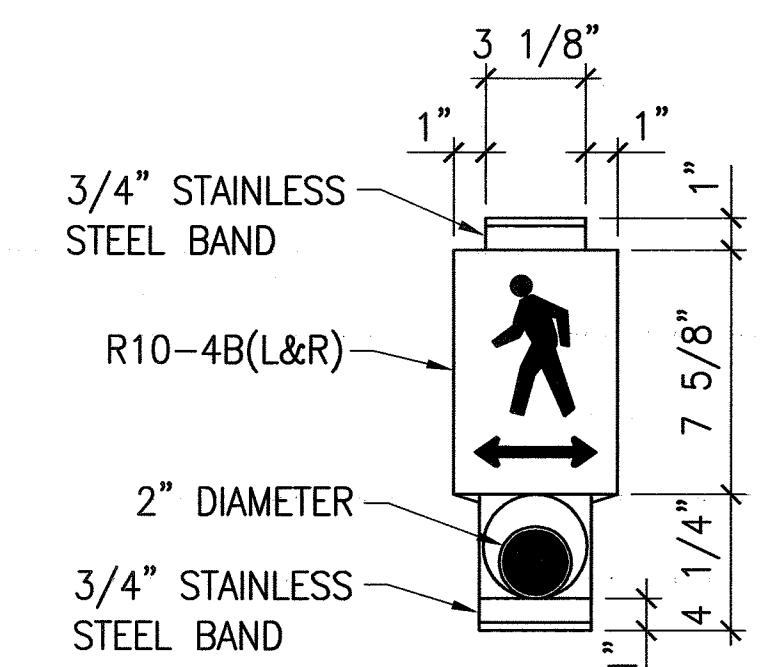
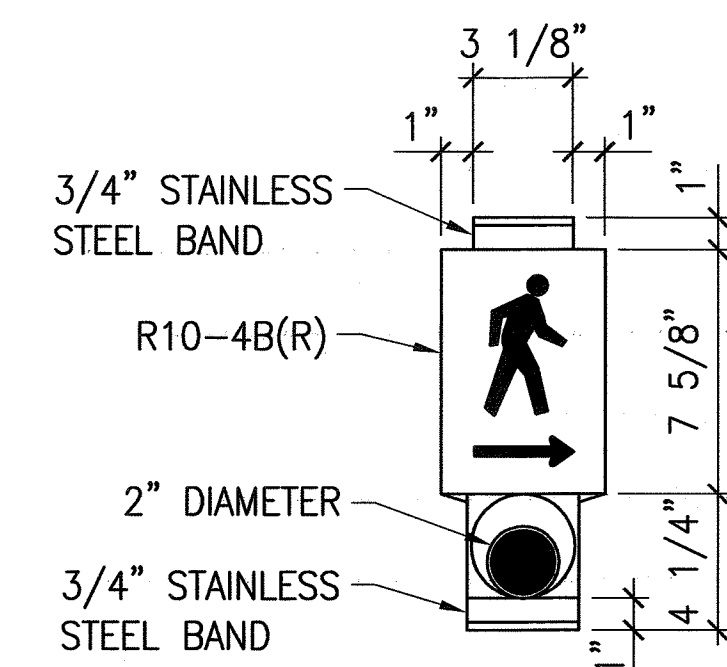
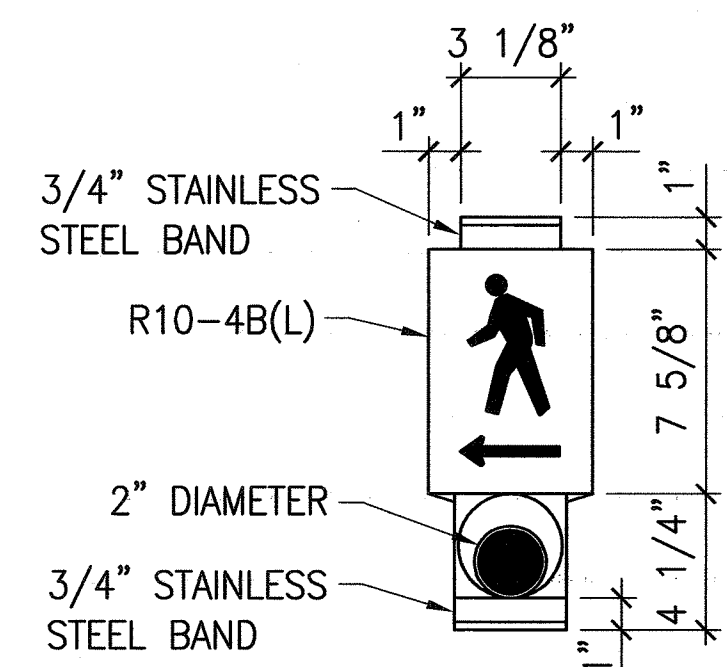
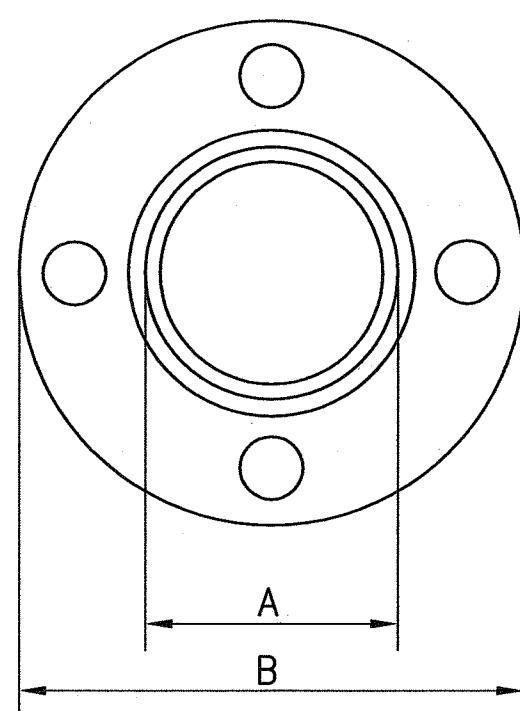
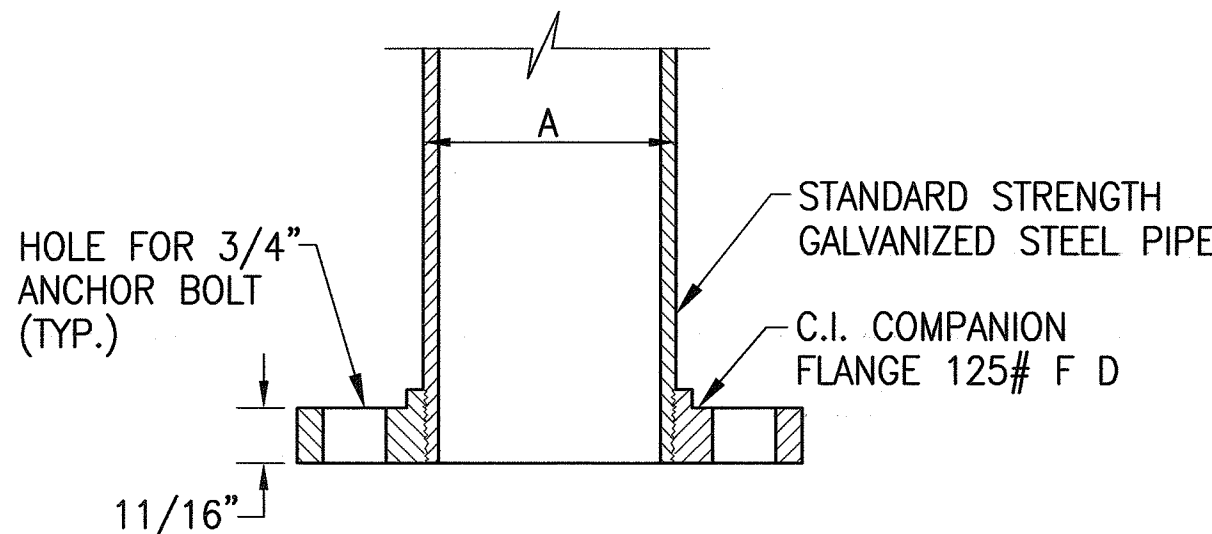


FED. ROAD DIST. NO.	STATE	FED. AID PROJ. NO.	FISCAL YEAR	SHEET NO.	TOTAL SHEETS
HAWAII	HAW.	CMAQ-0700(50)R	2004	21	100



DATA TABLE FOR PPB POST		
AMOUNT OF PPB	DIMENSIONS	
	A	B
1	3 1/2"	8"
2 OR 3	4 1/2"	9"

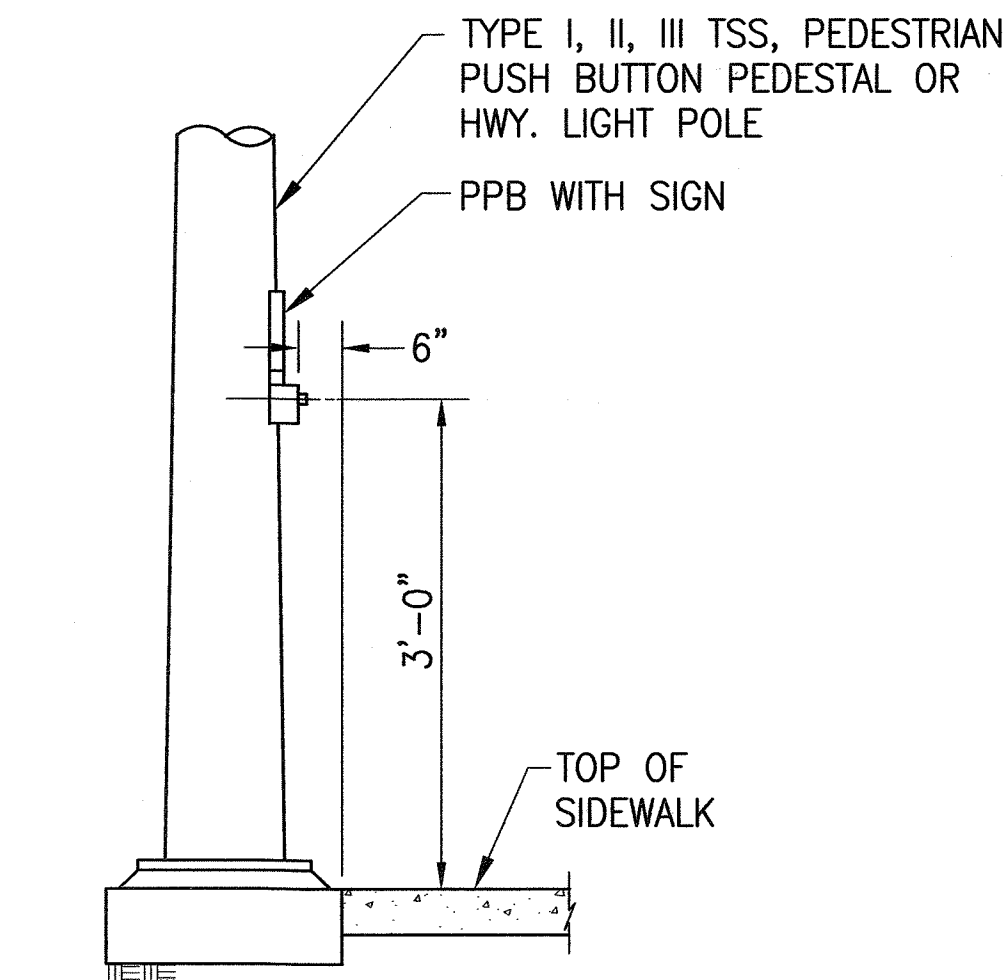
- NOTE:
1. CONDUITS SHALL PROTRUDE 2" MAX. ABOVE FINISHED SURFACE OF FOUNDATION.
 2. CONDUITS SHALL SLOPE AWAY FROM POST FOUNDATION.



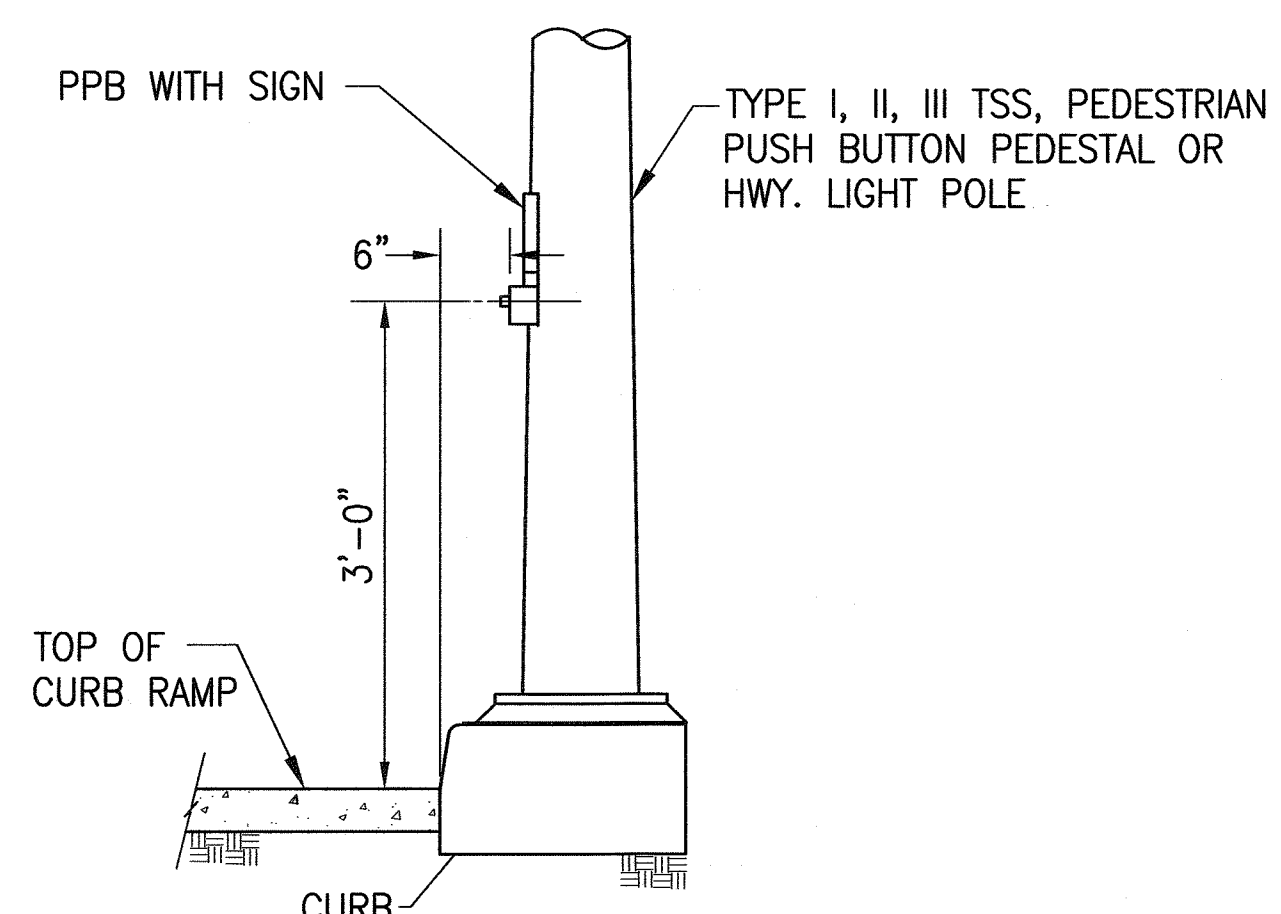
PEDESTRIAN PUSH BUTTON NOTES:

1. THE PEDESTRIAN PUSH BUTTON UNIT SHALL CONSIST OF A ONE PIECE ASSEMBLY WITH A RAISED WALKING MAN, ARROW INDICATION AND PUSH BUTTON.
2. THE PUSH BUTTON ACTIVATOR SHALL BE OF THE MUSHROOM PLUNGER TYPE, ADA ACCEPTABLE, 2-INCHES IN DIAMETER THAT REQUIRES LESS THAN 5 LBS. OF PRESSURE TO ACTIVATE.
3. THE RAISED MAN AND ARROWS SHALL BE DIRECTIONAL AND MATCH THE DIRECTIONAL INDICATION AS SHOWN ON THE PLANS.
4. THE PUSH BUTTON SHALL BE TAMPER PROOF, WEATHERPROOF AND CONSTRUCTED SO THAT ELECTRICAL SHOCKS ARE IMPOSSIBLE.
5. THE COLOR SCHEME SHALL BE:
WHITE - MAN, ARROW AND PUSH BUTTON
BLACK - BACKGROUND
6. THE PEDESTRIAN PUSH BUTTON SHALL BE INSTALLED SO THAT THE CENTER OF THE PUSH BUTTON ACTIVATOR IS 3'-6" ABOVE THE FINISH GRADE OF THE SIDEWALK OR CURB RAMP DIRECTLY FRONTING THE PUSH BUTTON WITH SIGN.
7. THERE SHALL BE A 30"x48" LEVEL GROUND SURFACE (2% MAX. CROSS SLOPE, BOTH DIRECTIONS) FOR A FORWARD OR SIDE APPROACH, AS APPROPRIATE, TO A PEDESTRIAN PUSH BUTTON. LOCATION OF PEDESTRIAN PUSH BUTTON SHALL BE SHOWN ON CIVIL PLANS IN ADDITION TO ELECTRICAL PLANS.

PEDESTRIAN PUSH BUTTON DETAILS



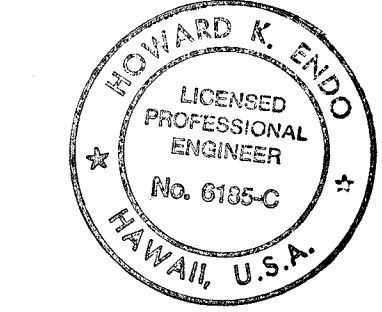
PUSH BUTTON FOR TYPE "A" AND TYPE "D" RAMPS



PUSH BUTTON FOR TYPE "B", TYPE "C" AND COMBINATION RAMPS

PEDESTRIAN PUSH BUTTON ON TRAFFIC SIGNAL STANDARD

SURVEY PLOTTED BY	DATE
DRAWN BY	
TRACED BY	
DESIGNED BY	
CHECKED BY	
ORIGINAL PLAN	
NOTE BOOK	
No.	



EXPIRATION DATE: 4/30/06
THIS WORK WAS PREPARED BY ME OR UNDER MY SUPERVISION AND CONSTRUCTION OF THIS PROJECT WILL BE UNDER MY OBSERVATION.

Signature: Howard K. Endo
Date: 9/22/04

"OBSERVATION OF CONSTRUCTION" IS DEFINED IN CHAPTER 16-115, HAWAII ADMINISTRATIVE RULES ENTITLED "PROFESSIONAL ENGINEERS, ARCHITECTS, SURVEYORS AND LANDSCAPE ARCHITECTS".

STATE OF HAWAII
DEPARTMENT OF TRANSPORTATION
HIGHWAYS DIVISION
**PEDESTRIAN PUSH BUTTON
DETAILS**
*Pedestrian Facilities & ADA Compliance
at Various Locations on Kaua'i
Fed. Aid Proj. No. CMAQ-0700(50)R*
Scale: AS NOTED Date: AUG. 13, 2004
SHEET No. 1 OF 1 SHEETS