

CURB RAMP AND SIDEWALK NOTES:

- 0351-CR-DET-01.dwg

ORIGINAL PLAN

NOTE BOOK

No. \_\_\_\_\_

SURVEY PLOTTED BY \_\_\_\_\_

DRAWN BY \_\_\_\_\_

TRACED BY \_\_\_\_\_

DESIGNED BY \_\_\_\_\_

QUANTITIES BY \_\_\_\_\_

CHECKED BY \_\_\_\_\_

DATE \_\_\_\_\_

\_\_\_\_\_

\_\_\_\_\_

\_\_\_\_\_

\_\_\_\_\_

\_\_\_\_\_
1. THESE TYPICAL DETAILS ARE INTENDED AS CURB RAMP GUIDELINES FOR DESIGN AND CONSTRUCTION.

2. A 2% MAXIMUM CROSS SLOPE SHALL BE MAINTAINED IN THE DIRECTION OF PEDESTRIAN TRAFFIC.

3. SUBJECT TO FIELD CONDITIONS, THE ENGINEER SHALL DETERMINE THE FINAL LOCATION OF CURB RAMPS.

4. ALL PULLBOXES SHALL BE INSTALLED AWAY FROM THE CURB RAMP AND WITHIN THE SIDEWALK/UNPAVED AREA TO THE MAXIMUM EXTENT FEASIBLE.

5. WHERE NECESSARY, EXISTING PULLBOXES, HANDHOLES, MANHOLES, ETC. SHALL BE ADJUSTED TO MATCH CURB RAMP GRADE. UTILITY BOXES WITHIN CURB RAMPS SHALL BE REINFORCED PER DPW STANDARD DETAIL R-16, SIDEWALK REINFORCEMENT DETAILS AT UTILITY BOXES OR OPENINGS. ADJUSTMENTS SHALL NOT BE PAID FOR SEPARATELY BUT SHALL BE CONSIDERED INCIDENTAL TO THE VARIOUS CURB RAMP ITEMS UNLESS INDICATED OTHERWISE. UTILITY BOXES WITHIN CURB RAMPS SHALL BE REINFORCED PER STANDARD DETAIL R-16, SIDEWALK REINFORCEMENT DETAILS AT UTILITY BOXES OR OPENINGS. THIS WORK SHALL BE CONSIDERED INCIDENTAL TO THE VARIOUS CONTRACT ITEMS FOR ADJUSTMENT OF EXISTING UTILITIES TO NEW GRADES.

6. TRANSITIONS FROM RAMPS TO GUTTERS AND ROADWAYS SHALL BE FLUSH.

7. CURB RAMPS AND SIDEWALKS SHALL BE CONSTRUCTED TO ELIMINATE PONDING TO THE MAXIMUM EXTENT FEASIBLE.

8. THE PEDESTRIAN PUSH BUTTON SHALL MEET OPERATIONAL AND REACH REQUIREMENTS OF THE AMERICAN WITH DISABILITIES ACT ACCESSIBILITY GUIDELINES (ADAAG):

A) FORWARD REACH. THE MAXIMUM HEIGHT FOR FORWARD REACH SHALL BE 48".

B) SIDE REACH. THE MAXIMUM HEIGHT FOR SIDE REACH SHALL BE 54".

C) OPERATION. CONTROLS AND OPERATING MECHANISMS SHALL BE OPERABLE WITH ONE HAND AND SHALL NOT REQUIRE TIGHT GRASPING, PINCHING, OR TWISTING OF THE WRIST. THE FORCE REQUIRED TO ACTIVATE CONTROLS SHALL BE NO GREATER THAN 5 LBF.

9. THE MAXIMUM SLOPES OF ADJOINING GUTTERS OR ROAD SURFACE IMMEDIATELY FRONTING THE CURB RAMP SHALL NOT EXCEED 5% FOR TYPE A, D, AND COMBINATION RAMPS AND 8.33% FOR TYPE B AND C.

10. THERE SHALL BE A 30"x48" LEVEL GROUND SURFACE (2% MAX. CROSS SLOPE, BOTH DIRECTIONS) FOR A FORWARD OR SIDE APPROACH, AS APPROPRIATE, TO A PEDESTRIAN PUSH BUTTON.

11. CONSTRUCTION JOINTS ARE REQUIRED TO JOIN CURB RAMPS WITH SIDEWALKS.

12. UNLESS OTHERWISE NOTED, NEW GUTTERS ARE REQUIRED AS SHOWN.

13. ALL CURB RAMPS SHALL BE REINFORCED WITH 6x6-W1.4/W1.4 WELDED WIRE FABRIC.

14. SURFACE OF SIDEWALKS AND CURB RAMPS SHALL BE FIRM, STABLE, AND SLIP-RESISTANT. THIS INCLUDES THE SURFACES OF PULLBOXES, VALVE COVERS, MANHOLE COVERS, ETC.

15. BED COURSE MATERIAL IS REQUIRED FOR CURB RAMPS, SIDEWALKS, AND GUTTERS.

16. ALL SIDEWALKS SHALL PROVIDE A MINIMUM CLEAR WIDTH OF 3'-0" (EXCLUDING CURB) FOR PEDESTRIAN CIRCULATION. IF THIS CANNOT BE MET, A MINIMUM 32-INCH CLEAR WIDTH IS ALLOWED FOR A DISTANCE OF 24-INCHES.

17. PASSING SPACES ALONG NEW SIDEWALKS WITH 5' CLEAR WIDTH OR LESS SHALL BE PROVIDED AT MAXIMUM 200' INTERVALS AS REQUIRED BY ADA GUIDELINES. THE PASSING AREA SHALL BE A MINIMUM 5' WIDE BY 5' LONG AS FEASIBLE.

18. IF POSSIBLE, INSTALL UTILITY POLES, FIRE HYDRANTS, LIGHT POLES, SIGN POSTS, PULLBOXES, ETC. OFF OF SIDEWALK BUT WITHIN THE RIGHT-OF-WAY.

19. OBJECTS PROTRUDING FROM UTILITY POLES AND WALLS ADJACENT TO THE SIDEWALKS (I.E. WALL MOUNTED FIRE HYDRANTS, TELEPHONES, METERS ON POLES, ETC.) SHALL BE MOUNTED TO MEET THE CURRENT AMERICAN WITH DISABILITIES ACT ACCESSIBILITY GUIDELINES (ADAAG) AND WILL BE SUBJECT TO ENGINEER'S APPROVAL.
20. IF A CURB RAMP IS NOT CONSTRUCTED ACCORDING TO THE PLANS, THE CONTRACTOR SHALL RECONSTRUCT THE CURB RAMP AT NO COST TO THE STATE. CONSTRUCTION TOLERANCE FOR PORTLAND CEMENT CONCRETE SHALL BE BASED ON 1/4 INCH PER 10 FT. (±0.2%). REMEDIAL MEASURES WILL NOT BE ACCEPTED.

21. ADDITIONAL INFORMATION IS AVAILABLE FROM:

A) AMERICAN WITH DISABILITIES ACT ACCESSIBILITY GUIDELINES (ADAAG), JAN. 1998, THE ACCESS BOARD.

B) ACCESSIBLE RIGHTS-OF-WAY: A DESIGN GUIDE, NOV. 1999, THE ACCESS BOARD.

C) DESIGNING SIDEWALKS AND TRAILS FOR ACCESS, PART 1, JULY 1999, FHWA.

D) DESIGNING SIDEWALKS AND TRAILS FOR ACCESS, PART 2, SEPT. 2001, FHWA.

22. PAY LIMITS FOR THE VARIOUS TYPES OF CURB RAMPS ARE AS SHOWN ON THESE TYPICAL DETAILS.

23. WHEN DIRECTED BY THE ENGINEER, SIDEWALK TRANSITION AREA SHALL BE EXTENDED BEYOND SHOWN PLAN LIMITS TO MATCH THE NEAREST SCORELINE. PAYMENT FOR THIS WORK WILL BE MADE ACCORDING TO SPECIFICATION SECTION 608-SIDEWALKS FOR ADDITIONAL WORK.

24. FOR ADA CURB RAMP COMPLIANCE, THE MAXIMUM CURB RAMP/TRANSITION SLOPES SHOWN ON THE CURB RAMP TYPICAL DETAILS SHALL GOVERN OVER THE CURB RAMP CALCULATED SLOPES SHOWN ON THE PLANS, UNLESS A TECHNICAL INFESIBILITY (TI) STATEMENT HAS BEEN FILED. IF A TI STATEMENT HAS BEEN FILED, THOSE RAMP SLOPES REFLECTED ON THE TI SHALL GOVERN. THE CONSTRUCTION TOLERANCES FOR ADA CURB RAMP SLOPES PROVIDED IN THE SP SECTION FOR CURB RAMPS, WILL BE APPLIED, AS APPLICABLE, TO THE MAXIMUM SLOPE REQUIREMENTS REFLECTED ON THIS PROJECT'S CURB RAMP TYPICAL DETAIL(S) OR THE SLOPES REFLECTED IN THE TI, WHICHEVER IS GREATER.

25. PAY LIMITS FOR THE VARIOUS TYPES OF CURB RAMPS ARE AS SHOWN ON THESE TYPICAL DETAILS, AND AS DESCRIBED IN THE SPECIFICATION SECTION FOR CURB RAMPS.

26. H:V SLOPE (10:1) REFERS TO H(10) HORIZONTAL (LEVEL PLANE) TO V(1) VERTICAL RATIO IN GRADES.

27. CONTROL POINTS ARE POINTS ON THE RAMP USED TO TIE THE RAMP TO A KNOWN REFERENCE POINT.

28. PROVIDE SIDEWALK TRANSITION WHEN EXIST SIDEWALK CROSS SLOPE AT END OF RAMP EXCEEDS 50:1. CROSS SLOPE OF RAMP SHALL BE 50:1 MAX. SIDEWALK TRANSITION SHALL BE 2'-0" LONG IF RUNNING SLOPE OF EXISITING SIDEWALK AT END OF RAMP IS 5 PERCENT OR LESS, UNLESS NOTED OTHERWISE. SIDEWALK TRANSITION SHALL BE LONGER THAN 2 FEET TO MAINTAIN A RUNNING SLOPE OF THE TRANSITION NOT EXCEEDING 5 PERCENT FOR A MAXIMUM LENGTH OF 5 FEET UNLESS OTHERWISE NOTED.

29. SEE DETAILS 3/68 FOR CURB DETAIL & 5/68 FOR PAVEMENT TRANSITION AND RAMP APPROACH FOR RAMPS WITH NO GUTTER.

30. CURB RAMP DIMENSIONS ARE GENERALLY REFERENCED FROM THE FRONT CURB FACE. FOR PERPENDICULAR, MEDIAN AND THRU CURB RAMPS, CURB RAMP DIMENSIONS ARE GENERALLY REFERENCED TO THE FRONT FACE NEXT NEXT TO THE ROADWAY. FOR PARALLEL AND COMBINATION CURB RAMPS, CURB RAMP DIMENSIONS CAN BE REFERENCED TO THE FRONT CURB FACE ON EITHER THE ROADWAY SIDE OR THE BACK EDGE OF THE CURB RAMP. THE CONTROLLING SIDE OF REFERENCE IS BASED ON THE SIDE CLOSEST TO THE LABELED DIMENSIONS.

31. TRANSITION FROM RAMPS TO WALKS, GUTTERS AND STREETS, APPROACHES TO STREETS AND SIDEWALKS TRANSITION TO WALKS SHALL BE FLUSH AND FREE OF ABRUPT CHANGES. WHEN NECESSARY AND APPROVED BY THE STATE, ABRUPT VERTICAL CHANGES IN GRADE NOT EXCEEDING 1/4 INCH FOR ALL RAMPS, LANDINGS, APPROACHES AND TRANSITIONS MAY BE ALLOWED.
- | FED. ROAD DIST. NO. | STATE | FED. AID PROJ. NO. | FISCAL YEAR | SHEET NO. | TOTAL SHEETS |
|---------------------|-------|--------------------|-------------|-----------|--------------|
| HAWAI'I             | HAW.  | CMAQ-0700(50)R     | 2004        | 11        | 100          |
- 
- EXPIRATION DATE: 4/30/06

THIS WORK WAS PREPARED BY ME OR UNDER MY SUPERVISION AND CONSTRUCTION OF THIS PROJECT WILL BE UNDER MY OBSERVATION.

Howard K. Endo

SIGNATURE

9/26/04

DATE

"OBSERVATION OF CONSTRUCTION" IS DEFINED IN CHAPTER 16-115, HAWAII ADMINISTRATIVE RULES ENTITLED "PROFESSIONAL ENGINEERS, ARCHITECTS, SURVEYORS AND LANDSCAPE ARCHITECTS".
- STATE OF HAWAII

DEPARTMENT OF TRANSPORTATION

HIGHWAYS DIVISION

CURB RAMP NOTES

Pedestrian Facilities & ADA Compliance

at Various Locations on Kaua'i

Fed. Aid Proj. No. CMAQ-0700(50)R

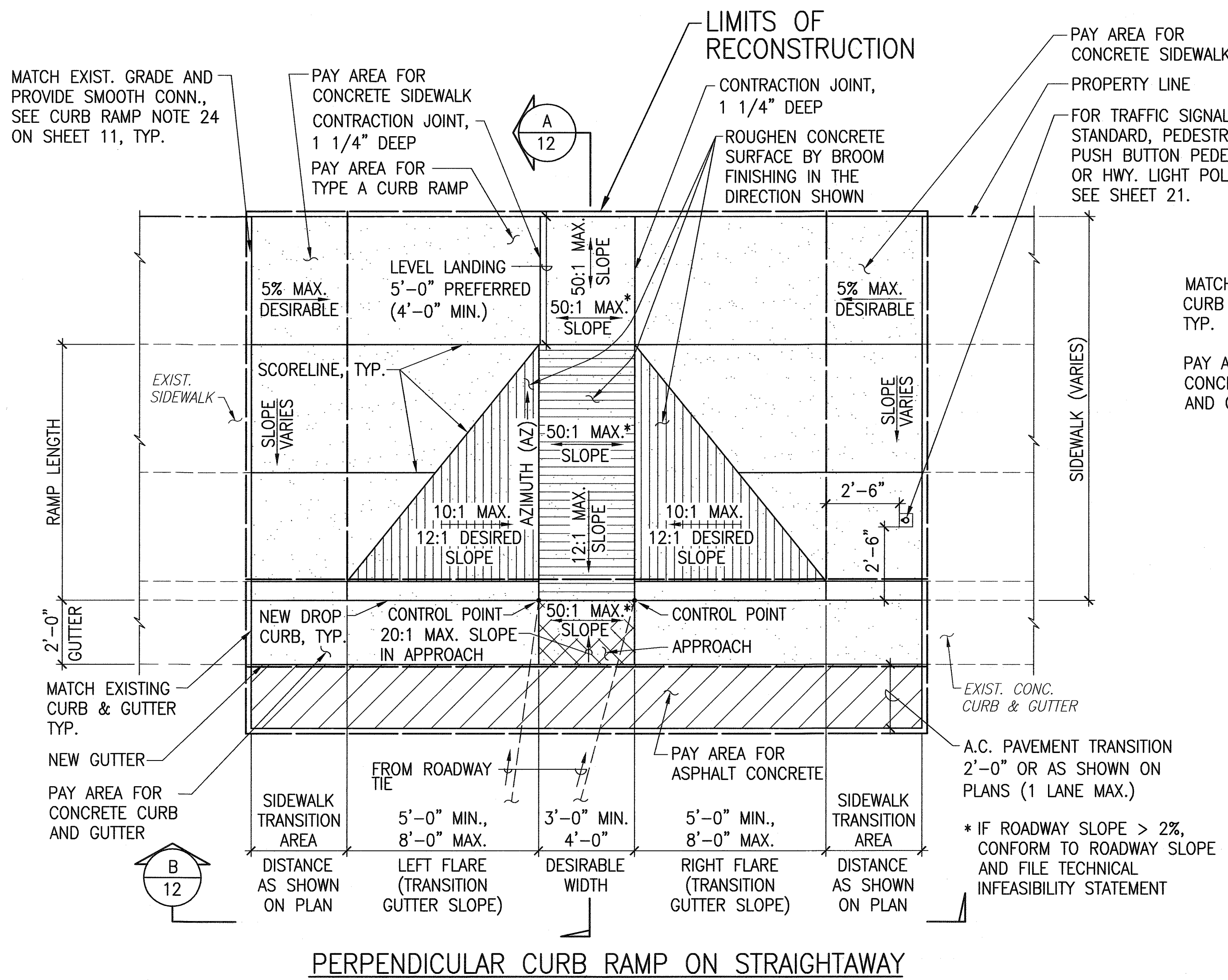
Scale: AS NOTED

Date: AUG. 13, 2004

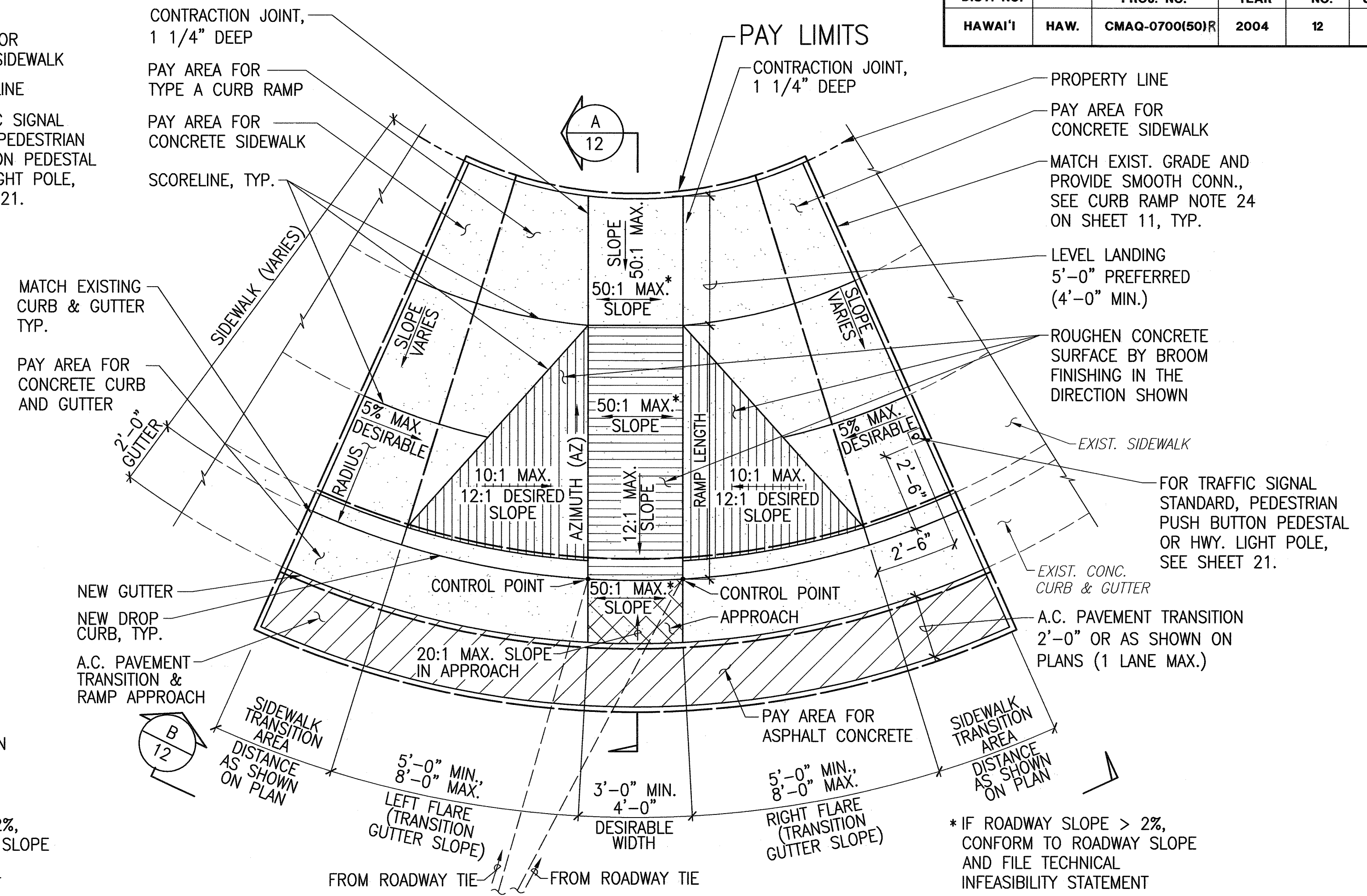
SHEET No. 1 OF 6 SHEETS
- 11



FED. ROAD DIST. NO.	STATE	FED. AID PROJ. NO.	FISCAL YEAR	SHEET NO.	TOTAL SHEETS
HAWAII	HAW.	CMAQ-0700(50)R	2004	12	100



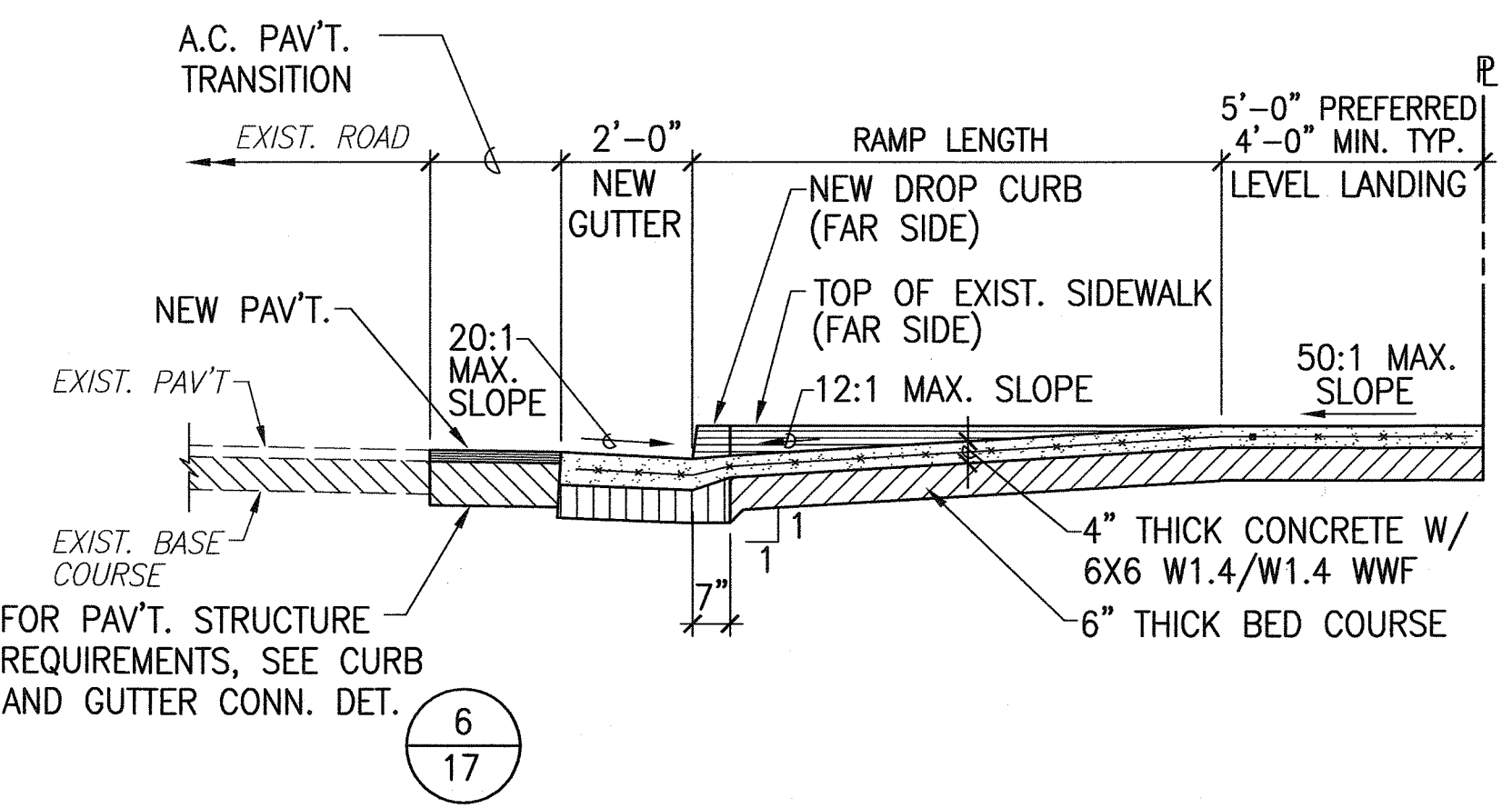
PERPENDICULAR CURB RAMP ON STRAIGHTAWAY



PERPENDICULAR CURB RAMP ON CURVE

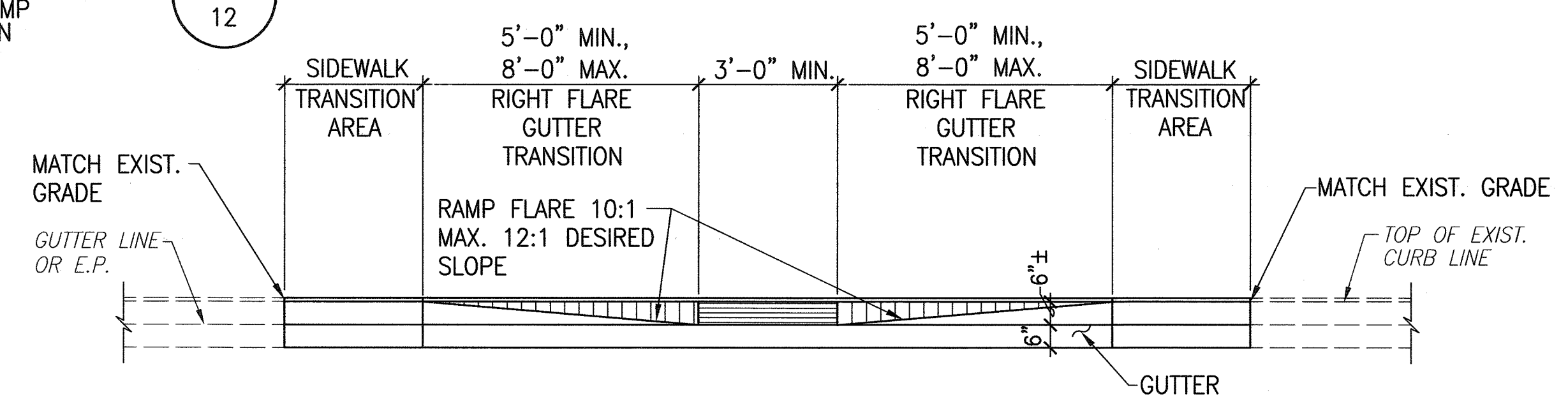
### TYPE A CURB RAMP 1

PERPENDICULAR CURB RAMP  
MONOLITHIC CONSTRUCTION



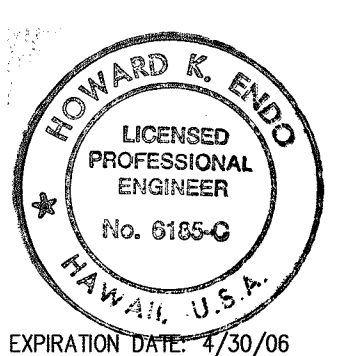
TYPE A CURB RAMP SECTION A

SCALE: 3/8"=1'-0"



TYPE A CURB RAMP ELEVATION B

SCALE: 3/8"=1'-0"



THIS WORK WAS PREPARED BY ME OR UNDER MY SUPERVISION AND CONSTRUCTION OF THIS PROJECT WILL BE UNDER MY OBSERVATION.

Signature: *Howard K. Endo* Date: *9/20/04*

"OBSERVATION OF CONSTRUCTION" IS DEFINED IN CHAPTER 16-115, HAWAII ADMINISTRATIVE RULES ENTITLED "PROFESSIONAL ENGINEERS, ARCHITECTS, SURVEYORS AND LANDSCAPE ARCHITECTS".

### STATE OF HAWAII DEPARTMENT OF TRANSPORTATION HIGHWAYS DIVISION

### CURB RAMP DETAILS - 1

Pedestrian Facilities & ADA Compliance  
at Various Locations on Kaua'i  
Fed. Aid Proj. No. CMAQ-0700(50)R

Scale: AS NOTED Date: AUG. 13, 2004

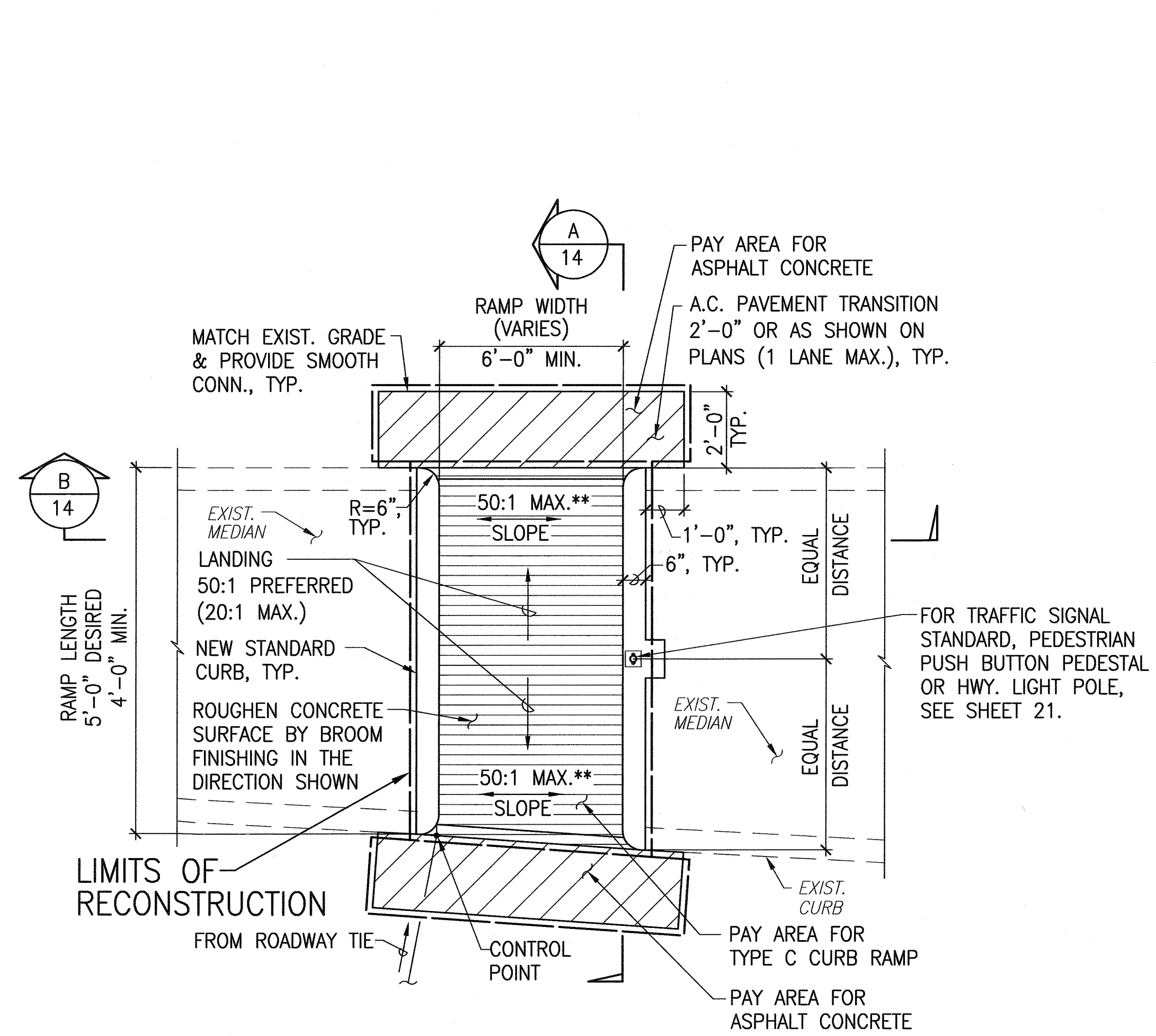
SHEET No. 2 OF 6 SHEETS







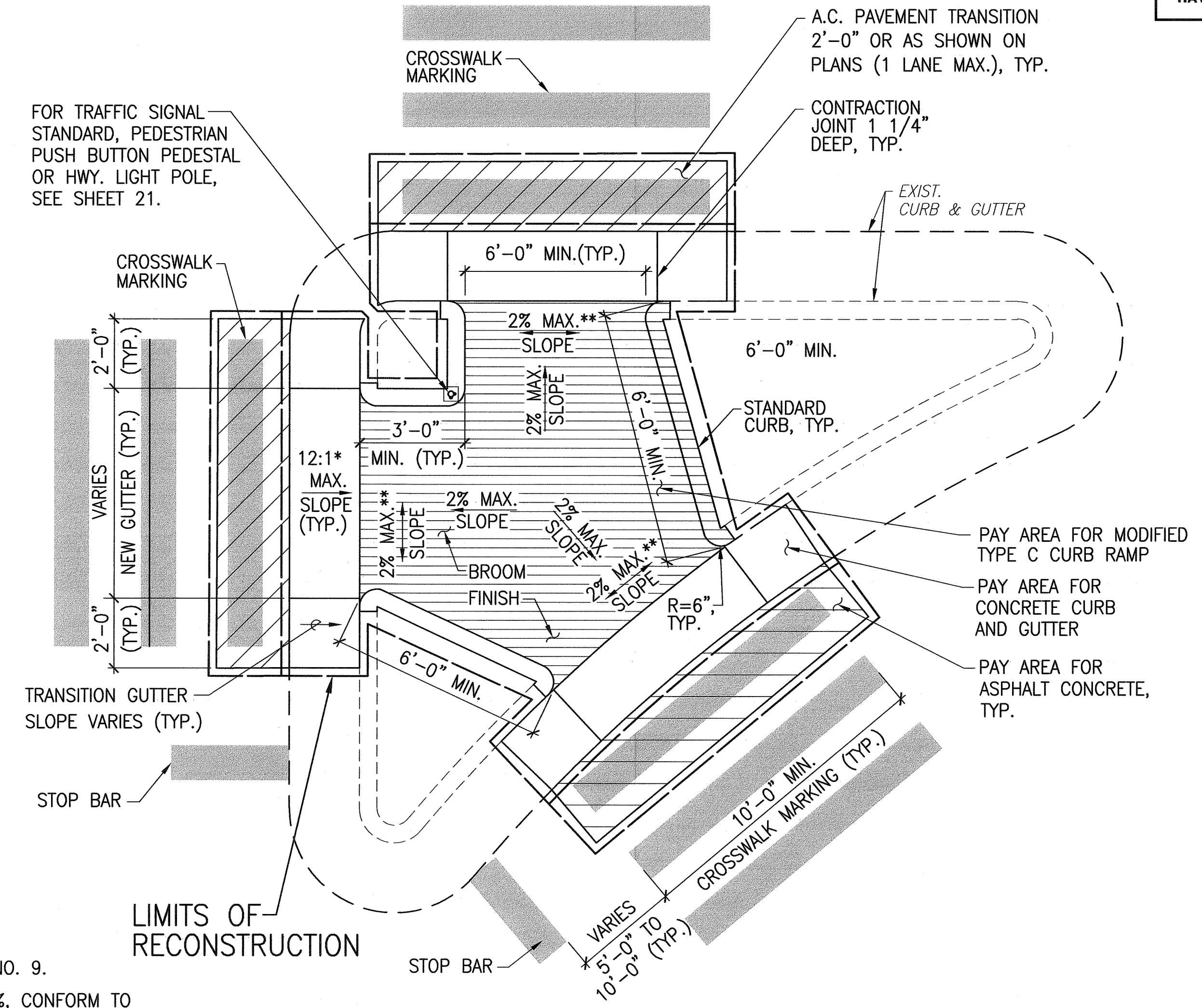
FED. ROAD DIST. NO.	STATE	FED. AID PROJ. NO.	FISCAL YEAR	SHEET NO.	TOTAL SHEETS
HAWAII	HAW.	CMAQ-0700(50)R	2004	14	100



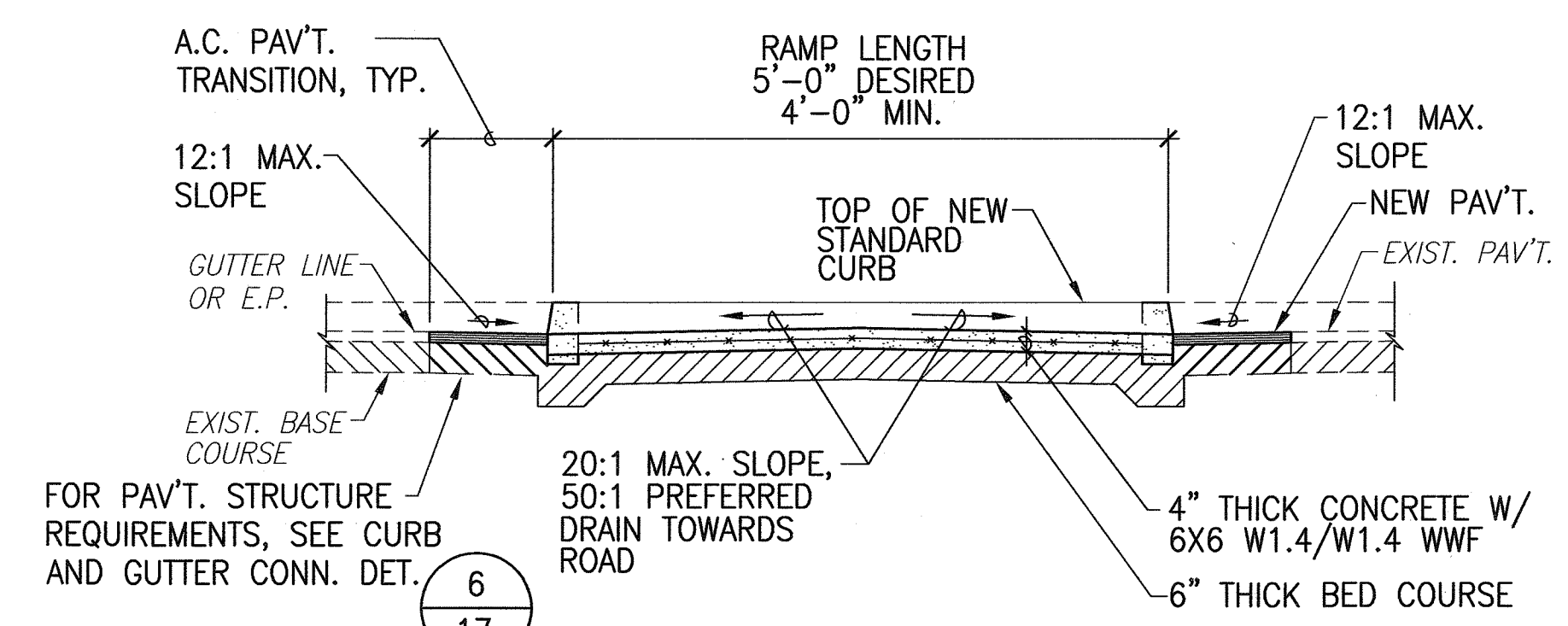
TYPE C CURB RAMP

\* SEE CURB RAMP NOTE NO. 9.  
 \*\* IF ROADWAY SLOPE > 2%, CONFORM TO ROADWAY SLOPE AND FILE TECHNICAL INFEASIBILITY STATEMENT

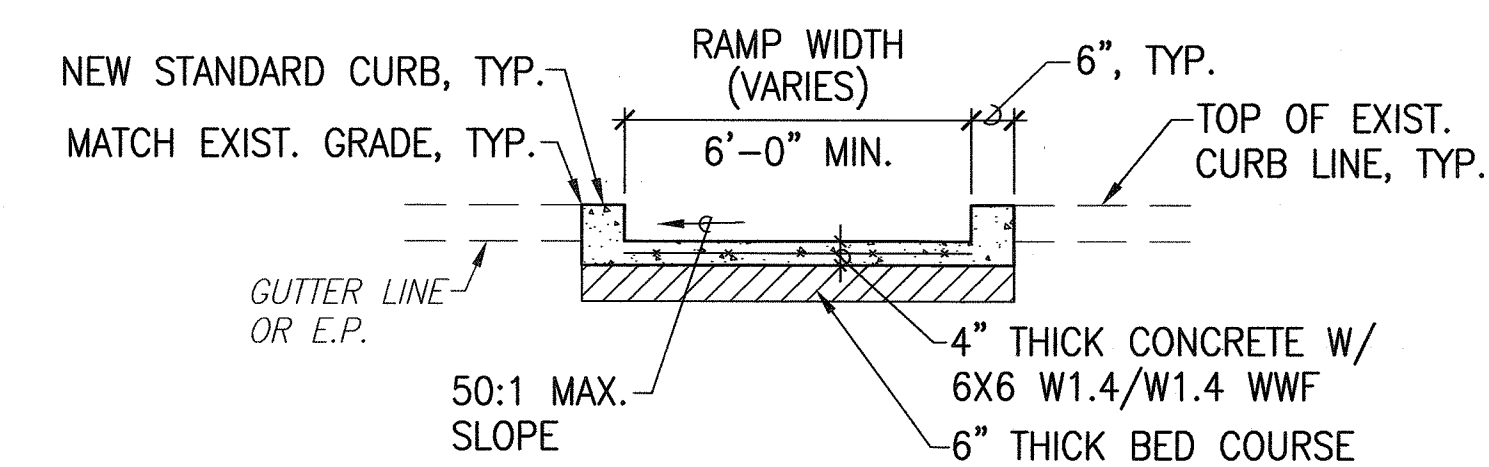
TYPE C CURB RAMP 1  
 MEDIAN CURB RAMP  
 MONOLITHIC CONSTRUCTION  
 SCALE: 3/8"=1'-0"



MODIFIED TYPE C CURB RAMP



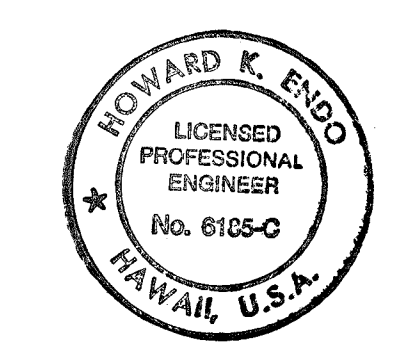
TYPE C CURB RAMP SECTION A  
 SCALE: 3/8"=1'-0"



TYPE C CURB RAMP ELEVATION B  
 SCALE: 3/8"=1'-0"

SURVEY PLOTTED BY	DATE
DRAWN BY	
TRACED BY	
QUANTITIES BY	
CHECKED BY	
ORIGINAL PLAN	
NOTE BOOK	
No.	

0351-CR-DET-04.dwg



EXPIRATION DATE: 4/30/06  
 THIS WORK WAS PREPARED BY ME OR UNDER MY SUPERVISION AND CONSTRUCTION OF THIS PROJECT WILL BE UNDER MY OBSERVATION.  
 Signature: *Howard K. Endo* Date: *9/22/04*  
 "OBSERVATION OF CONSTRUCTION" IS DEFINED IN CHAPTER 16-115, HAWAII ADMINISTRATIVE RULES ENTITLED "PROFESSIONAL ENGINEERS, ARCHITECTS, SURVEYORS AND LANDSCAPE ARCHITECTS."

STATE OF HAWAII

DEPARTMENT OF TRANSPORTATION

HIGHWAYS DIVISION

CURB RAMP DETAILS - 3

Pedestrian Facilities & ADA Compliance  
at Various Locations on Kaua'i

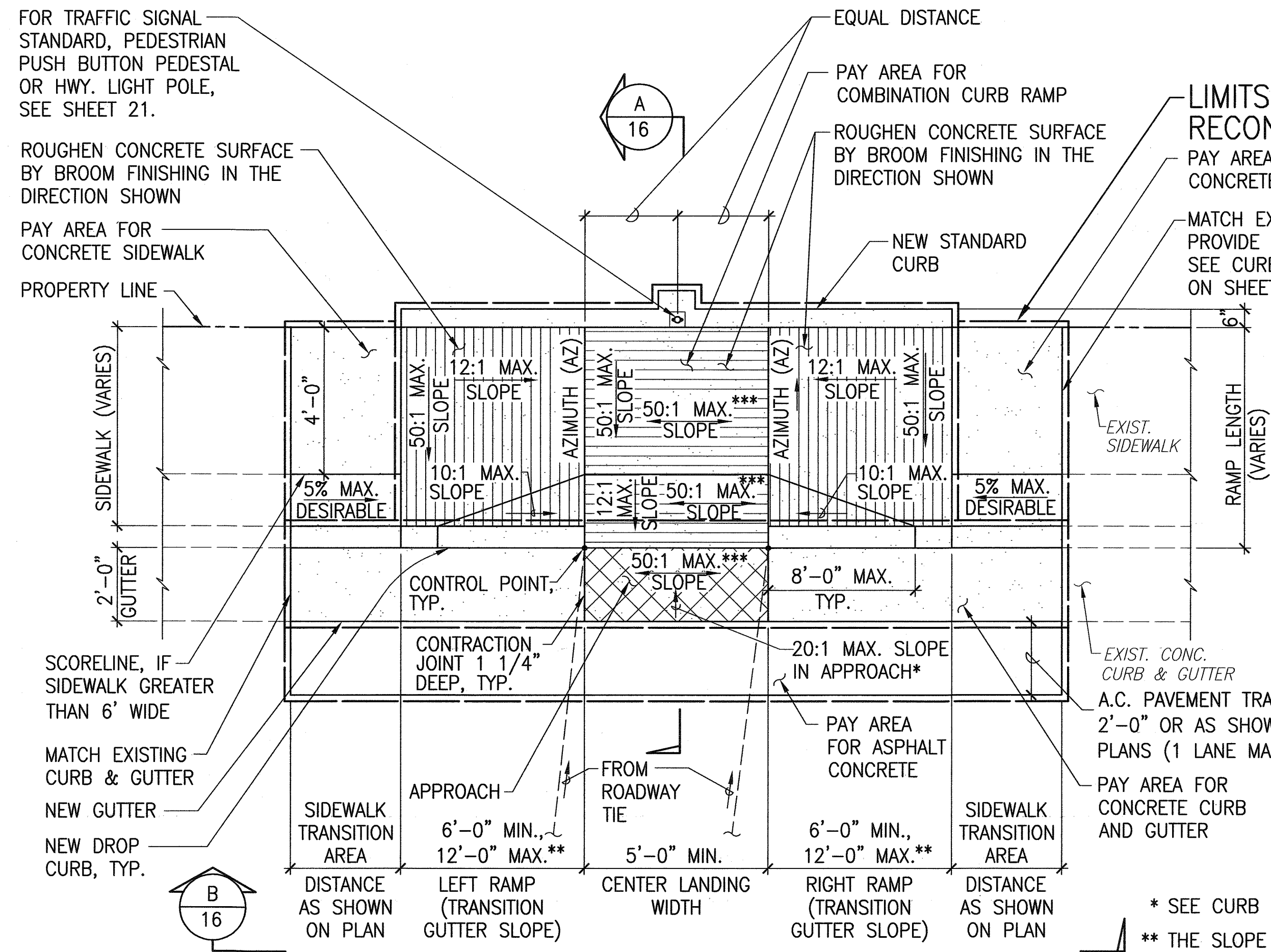
Fed. Aid Proj. No. CMAQ-0700(50)R

Scale: AS NOTED Date: AUG. 13, 2004

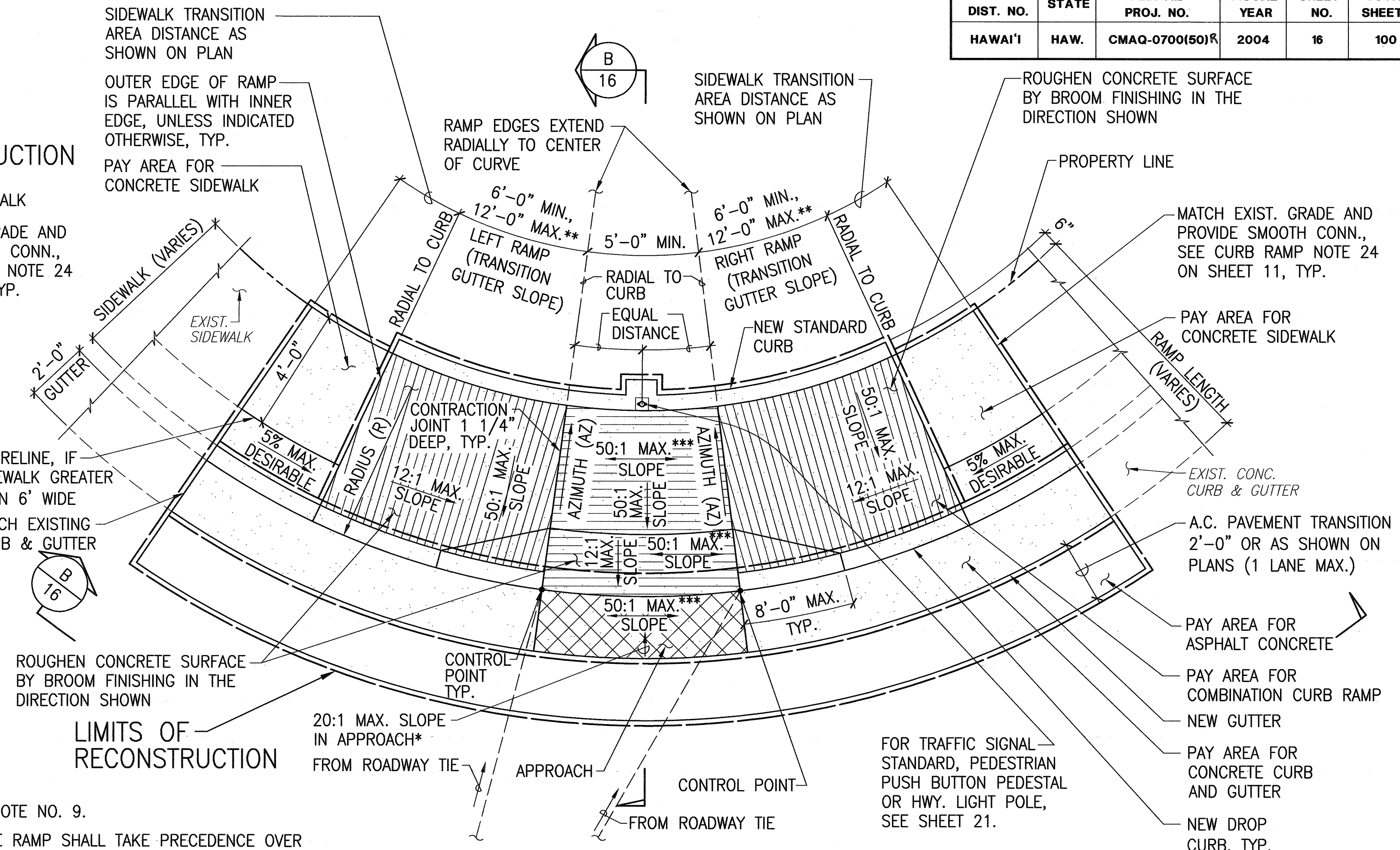




FED. ROAD DIST. NO.	STATE	FED. AID PROJ. NO.	FISCAL YEAR	SHEET NO.	TOTAL SHEETS
HAWAII	HAW.	CMAQ-0700(50)R	2004	16	100



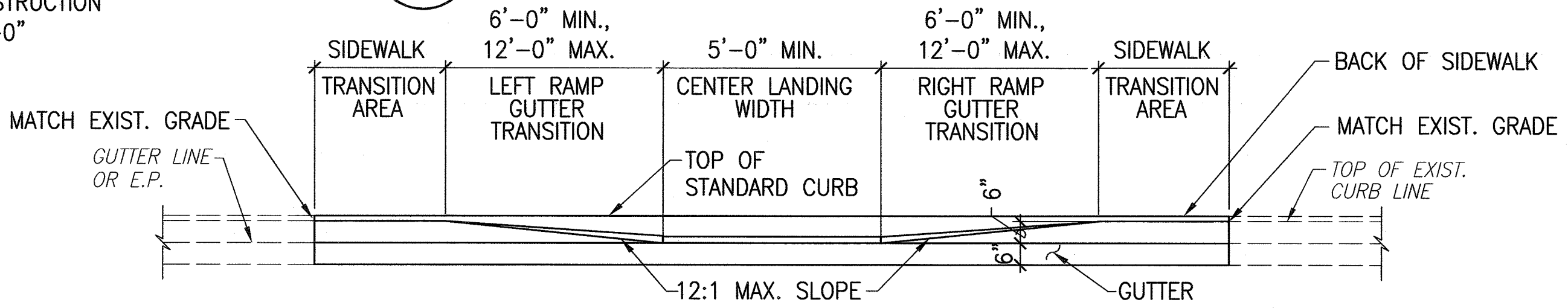
COMBINATION CURB RAMP ON STRAIGHTAWAY



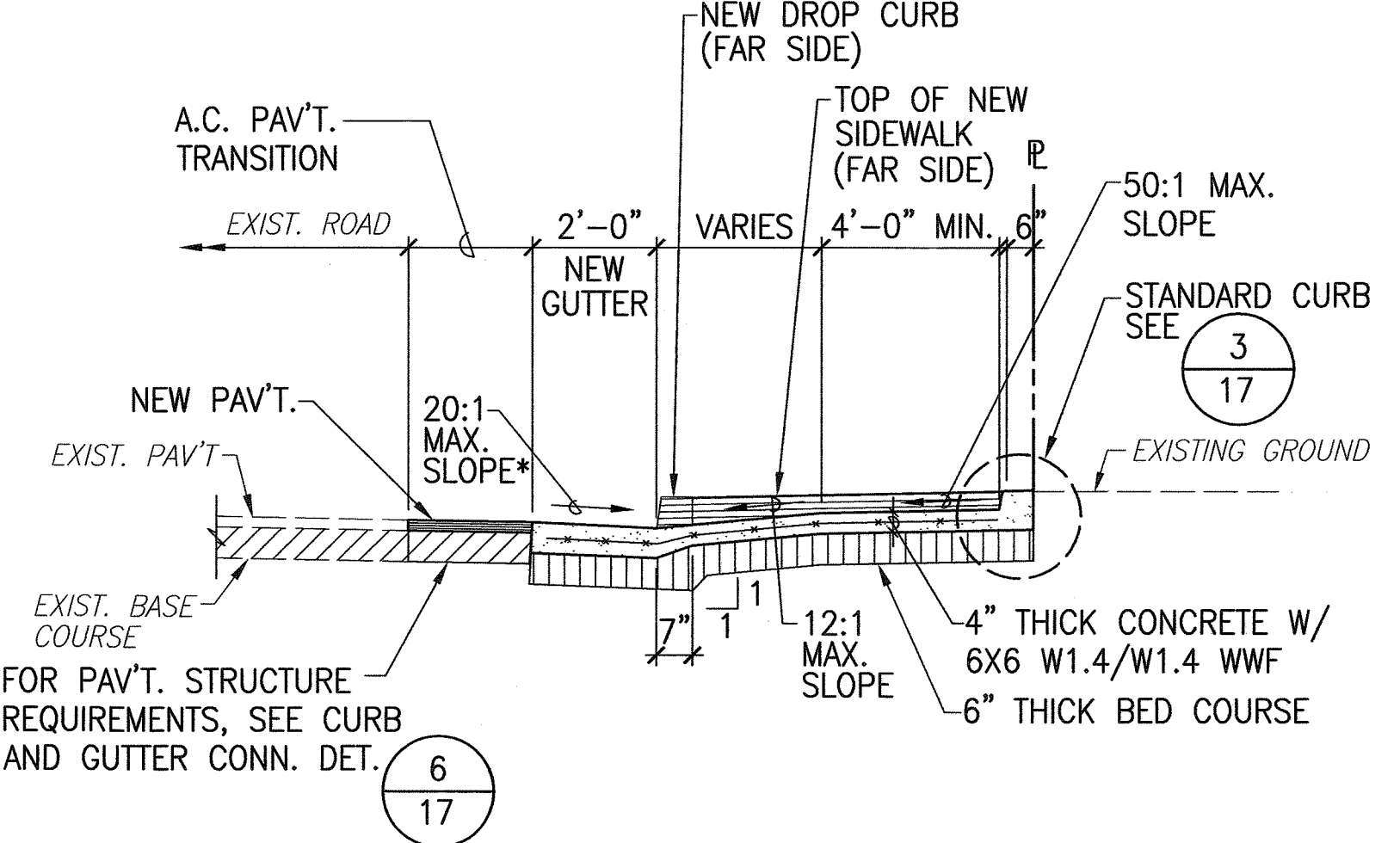
COMBINATION CURB RAMP ON CURVE

\* SEE CURB RAMP NOTE NO. 9.  
\*\* THE SLOPE OF THE RAMP SHALL TAKE PRECEDENCE OVER THE LENGTH OF THE RAMP. IF THE MAXIMUM SLOPE OF A RAMP CANNOT BE MET WITHIN A LENGTH OF 12 FEET, THEN THE SLOPE OF THE RAMP SHALL BE SET WHEN THE LENGTH OF THE RAMP IS SET AT THE MAXIMUM OF 12 FEET.  
\*\*\* IF ROADWAY SLOPE > 2%, CONFORM TO ROADWAY SLOPE AND FILE TECHNICAL INFEASIBILITY STATEMENT

COMBINATION CURB RAMP 1  
COMBINATION CURB RAMP  
MONOLITHIC CONSTRUCTION  
SCALE: 3/8"=1'-0"



TYPE COMBINATION CURB RAMP ELEVATION B  
SCALE: 3/8"=1'-0"



TYPE COMBINATION CURB RAMP SECTION A  
SCALE: 3/8"=1'-0"

NOTE:  
FOR INDIVIDUAL CONSTRUCTION  
OF RAMP AND GUTTER  
SEE DETAIL 4 17

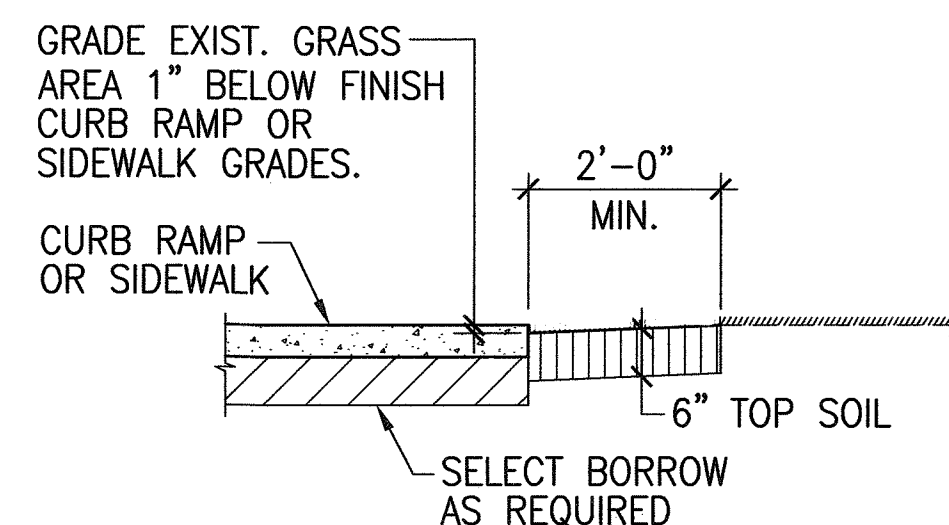
SURVEY PLOTTED BY	DATE
DRAWN BY	
DESIGNED BY	
CHECKED BY	
ORIGINAL PLAN	
NOTE BOOK	
No.	

HOWARD K. ENO  
LICENSED PROFESSIONAL ENGINEER  
No. 6125-Q  
HAWAII, U.S.A.  
EXPIRATION DATE: 4/30/06  
THIS WORK WAS PREPARED BY ME OR UNDER MY SUPERVISION AND CONSTRUCTION OF THIS PROJECT WILL BE UNDER MY OBSERVATION.  
Signature: Howard K. Eno  
Date: 9/26/04  
"OBSERVATION OF CONSTRUCTION" IS DEFINED IN CHAPTER 16-115, HAWAII ADMINISTRATIVE RULES ENTITLED "PROFESSIONAL ENGINEERS, ARCHITECTS, SURVEYORS AND LANDSCAPE ARCHITECTS".

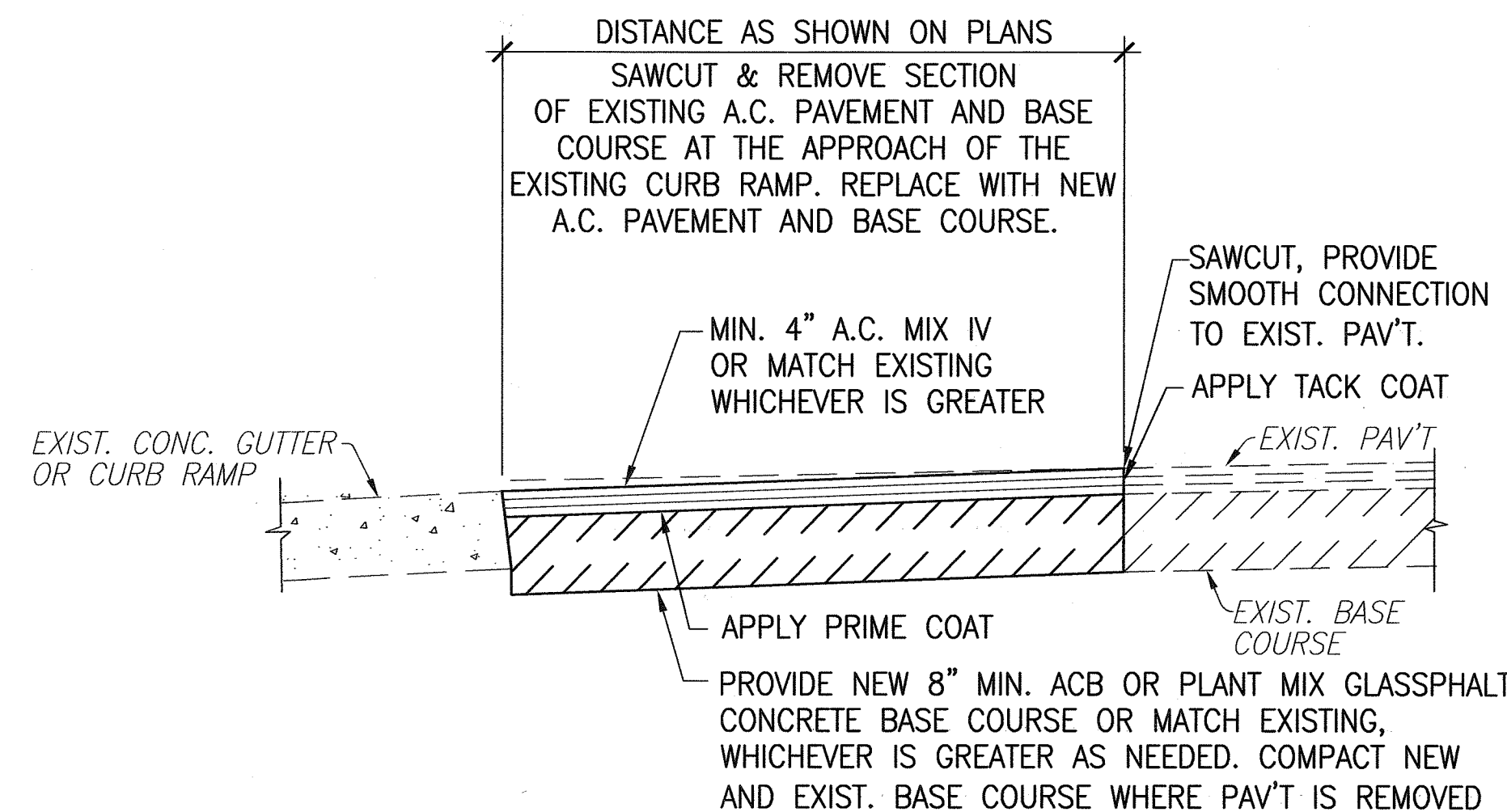
STATE OF HAWAII  
DEPARTMENT OF TRANSPORTATION  
HIGHWAYS DIVISION  
**CURB RAMP DETAILS - 5**  
*Pedestrian Facilities & ADA Compliance  
at Various Locations on Kaua'i*  
Fed. Aid Proj. No. CMAQ-0700(50)R  
Scale: AS NOTED Date: AUG. 13, 2004  
SHEET No. 6 OF 6 SHEETS



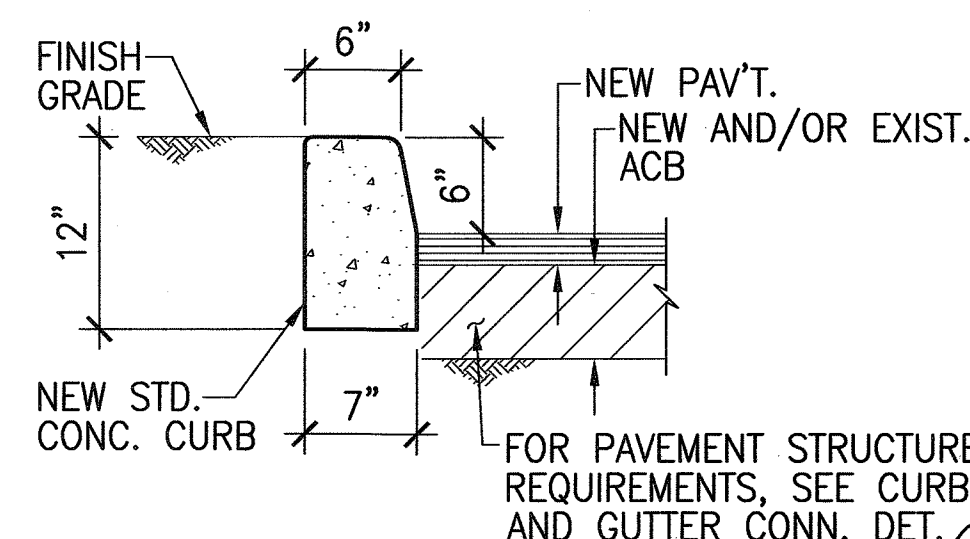
FED. ROAD DIST. NO.	STATE	FED. AID PROJ. NO.	FISCAL YEAR	SHEET NO.	TOTAL SHEETS
HAWAII	HAW.	CMAQ-0700(50)R	2004	17	100



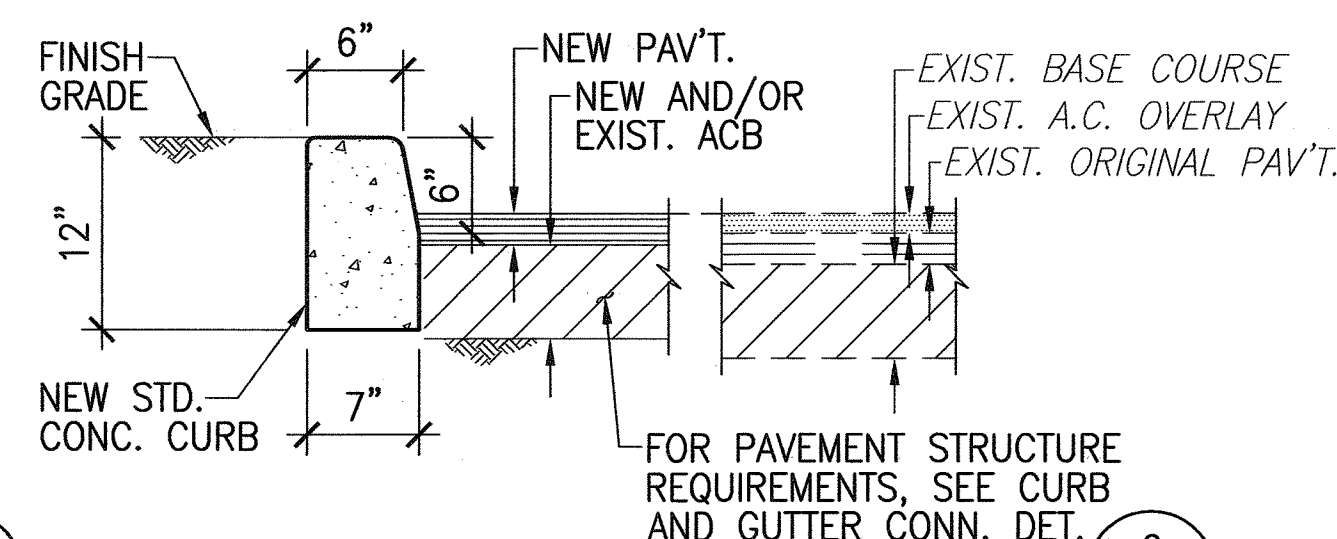
**TYP. GRADED TOPSOIL RESTORATION DETAIL 1**  
SCALE: 1/2"=1'-0"



**SAWCUT AND REPLACE A.C. PAVEMENT DET. 2**  
SCALE: 1"=1'-0"

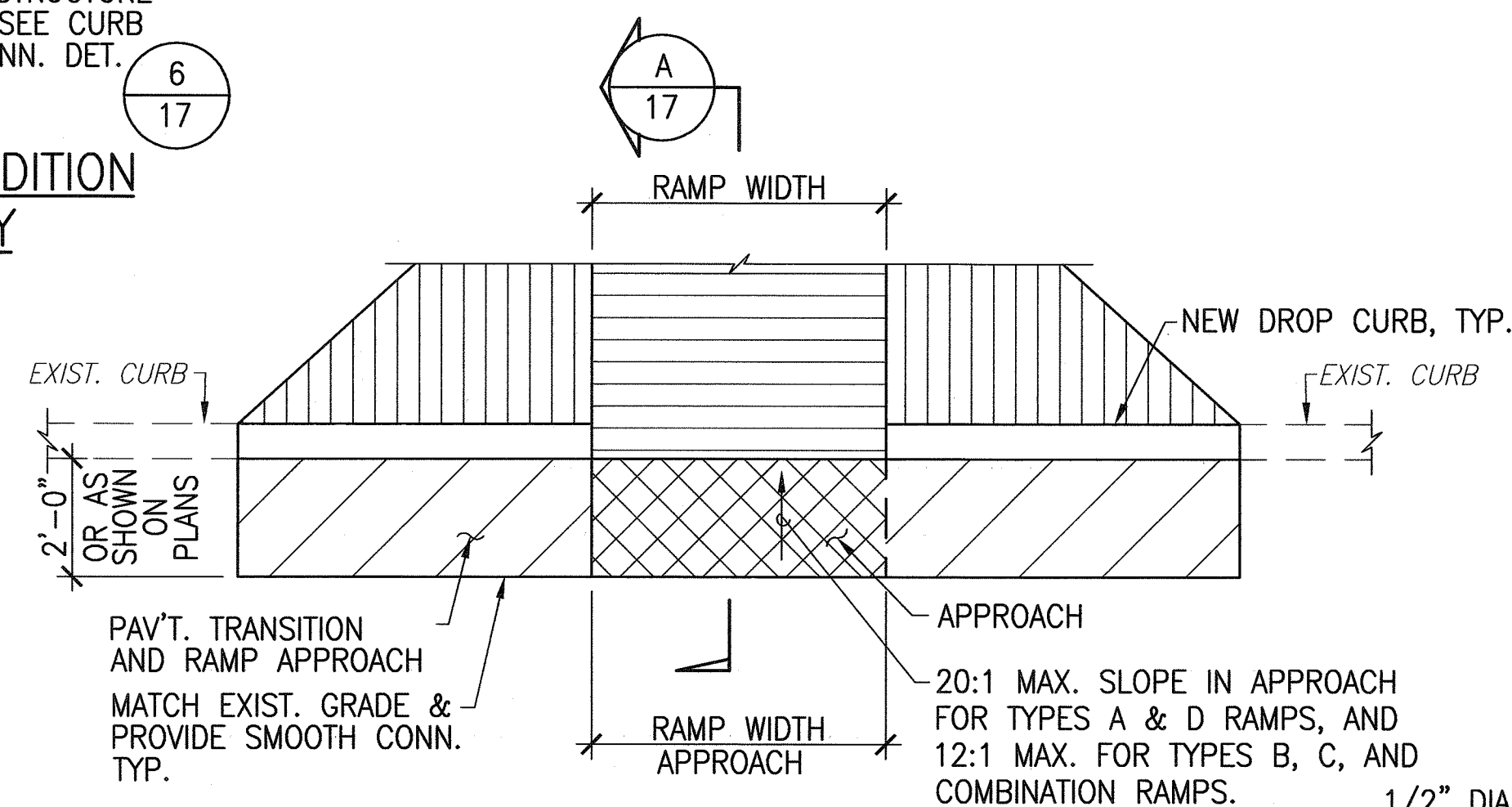


**TYPICAL CURB AND PAVEMENT CONDITION**

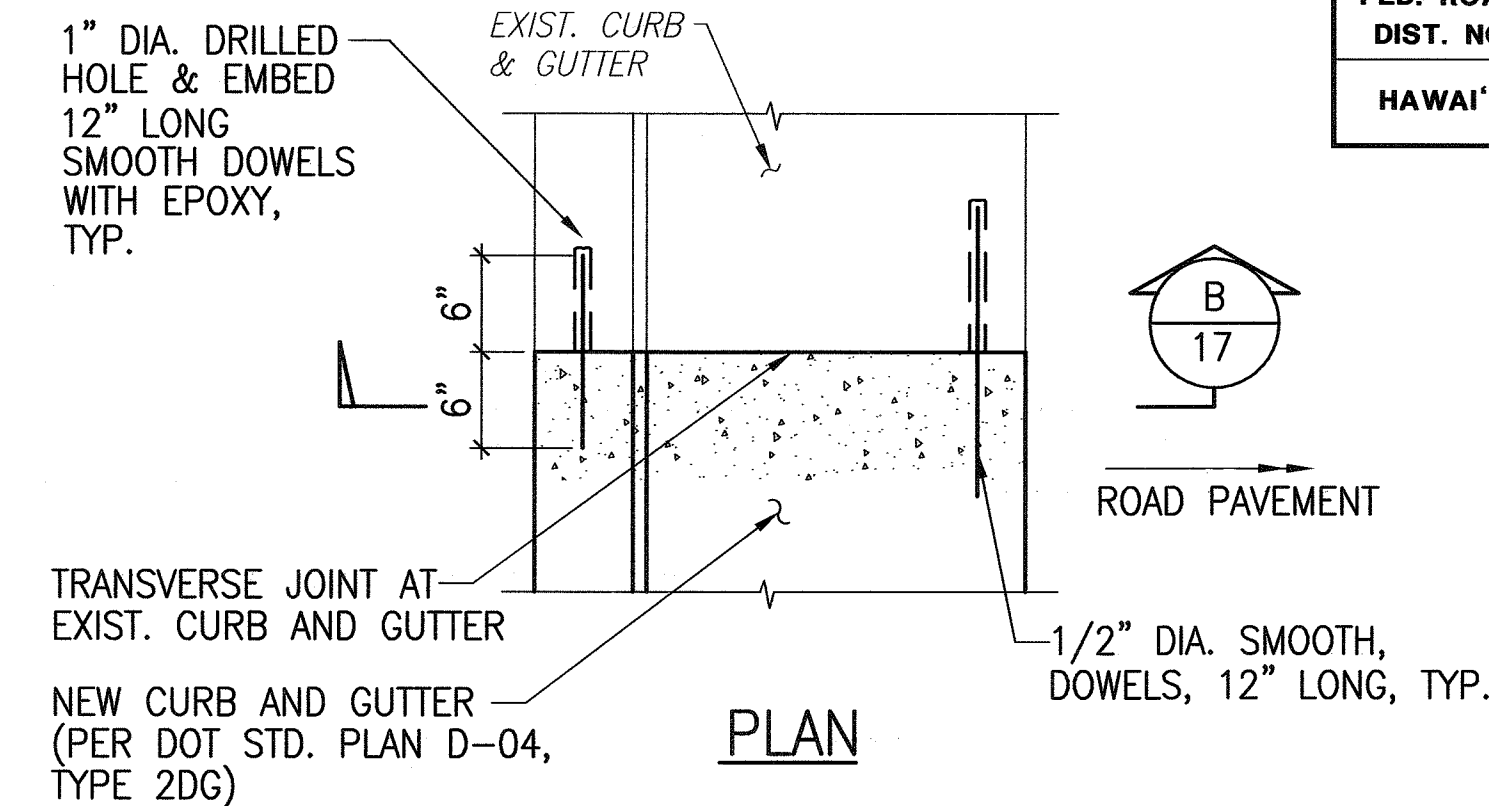


**CURB AND PAVEMENT CONDITION FOR ROADS W/ OVERLAY**

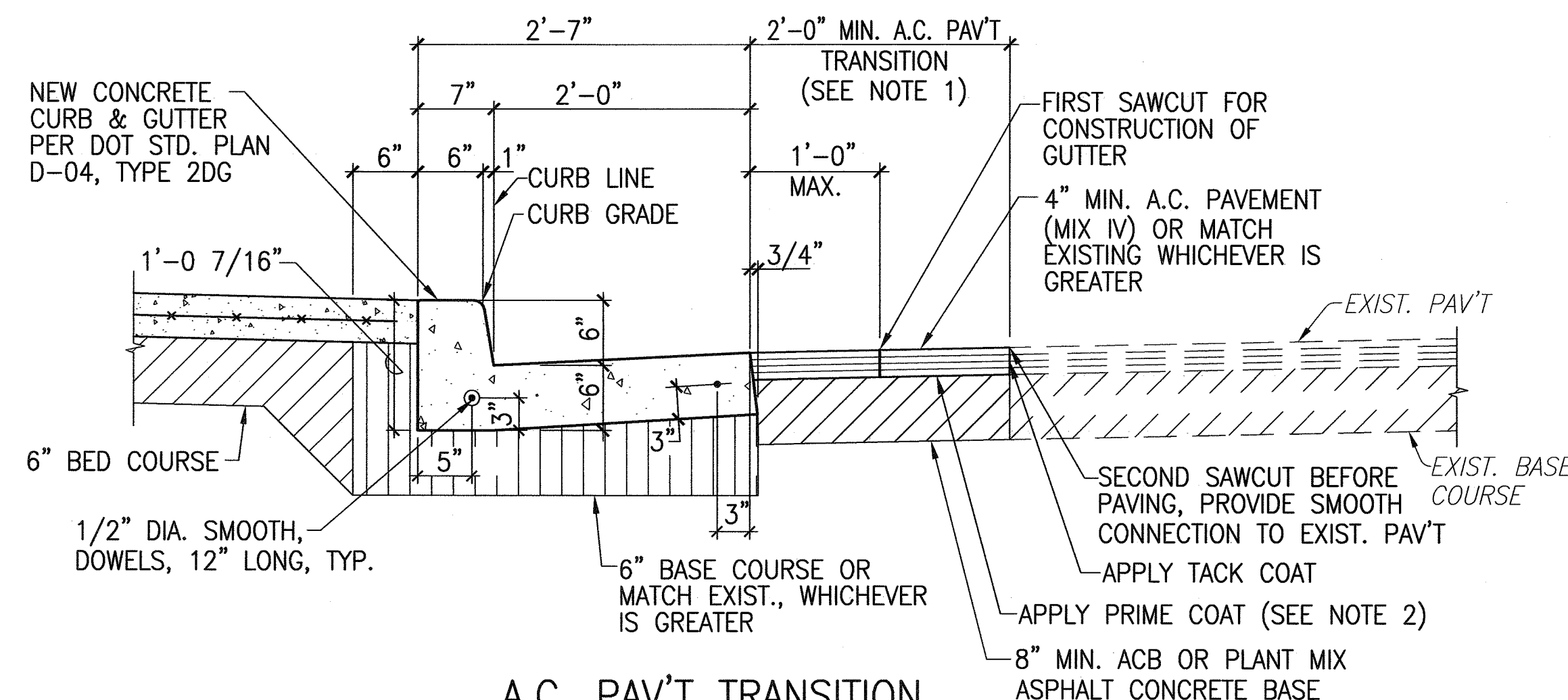
**CONCRETE CURB & PAVEMENT DETAIL 3**  
SCALE: 1"=1'-0"



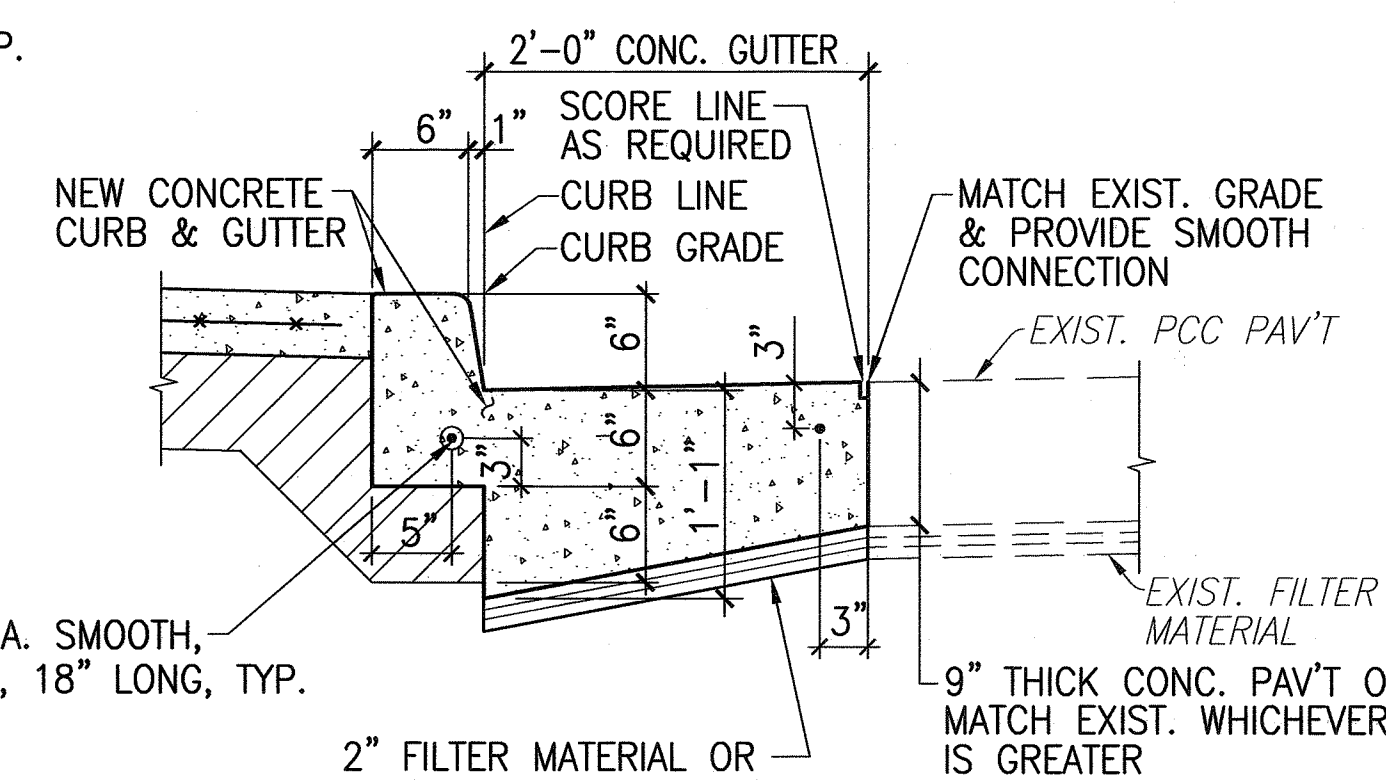
**PAV'T TRANSITION AND RAMP APPROACH FOR RAMPS WITH NO GUTTER 5**  
SCALE: 3/8"=1'-0"



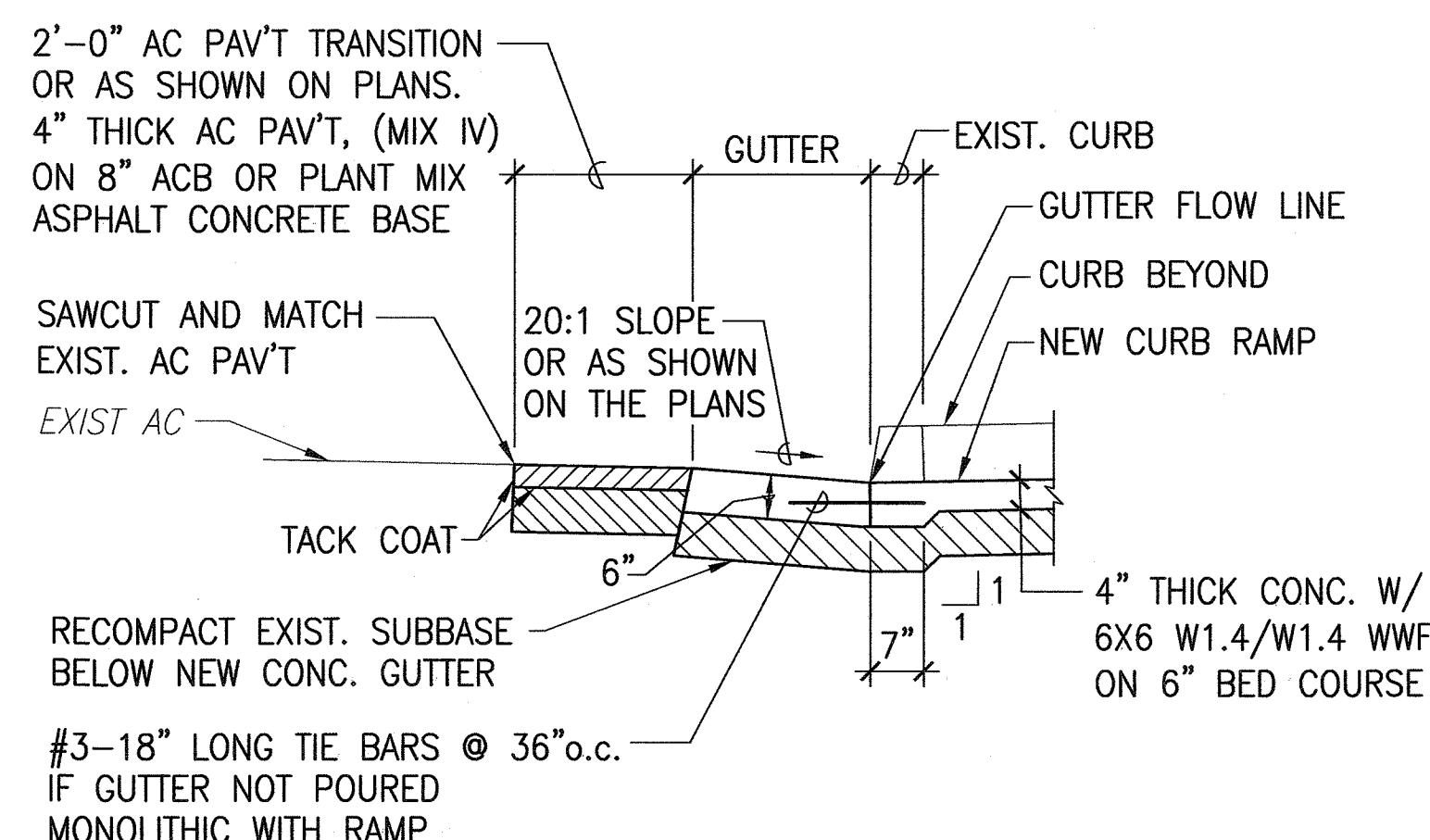
**PLAN**



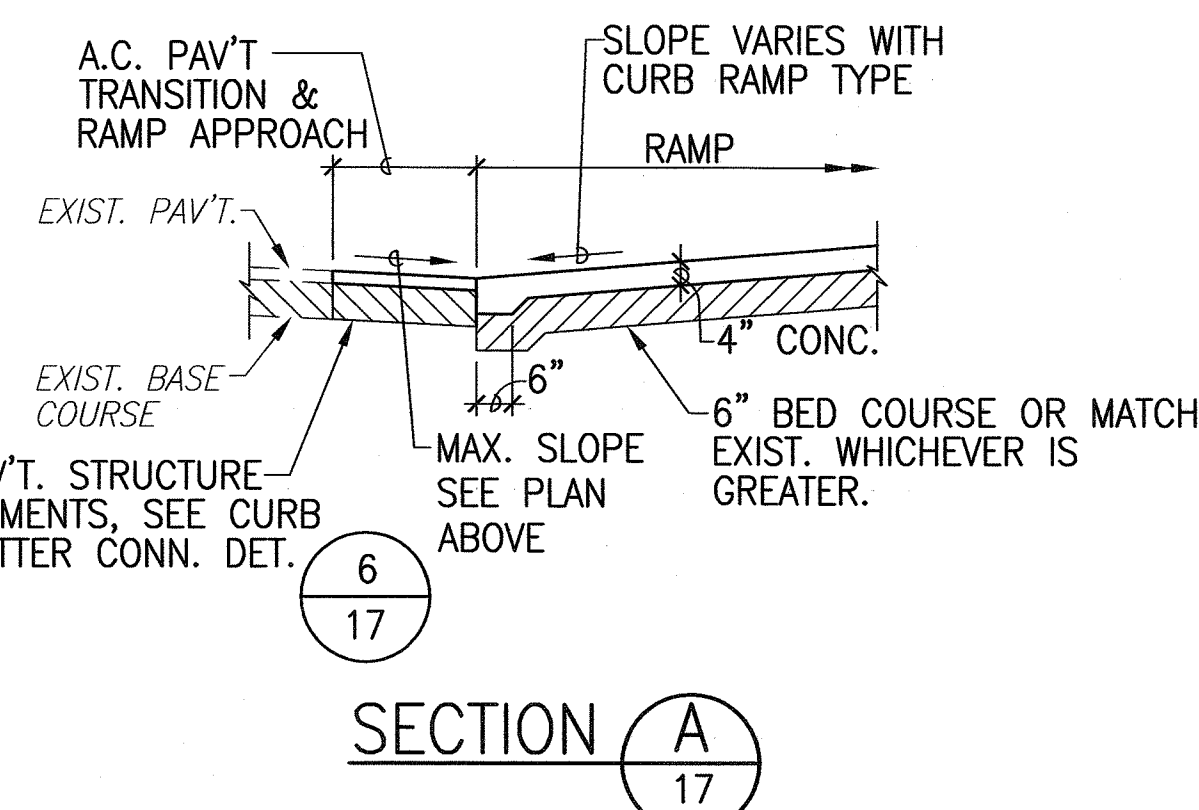
**A.C. PAV'T TRANSITION SECTION B 17**



**CONC. PAV'T TRANSITION CURB & GUTTER CONNECTION DET. 6**  
SCALE: 1"=1'-0"



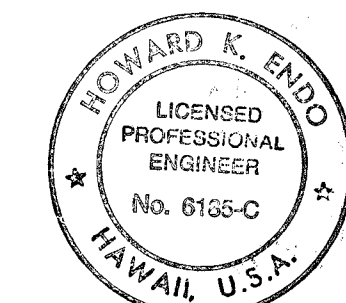
**INDIVIDUAL CONSTRUCTION OF RAMP AND GUTTER DETAIL 4**  
SCALE: 1/2"=1'-0"



**SECTION A 17**

DATE	_____
SURVEY PLOTTED BY	_____
DRAWN BY	_____
TRACED BY	_____
QUANTITIES BY	_____
CHECKED BY	_____
ORIGINAL PLAN	_____
NOTE BOOK	_____
No.	_____

0351-CR-TYP DET.dwg



EXPIRATION DATE: 4/30/06

THIS WORK WAS PREPARED BY ME OR UNDER MY SUPERVISION AND CONSTRUCTION OF THIS PROJECT WILL BE UNDER MY OBSERVATION.

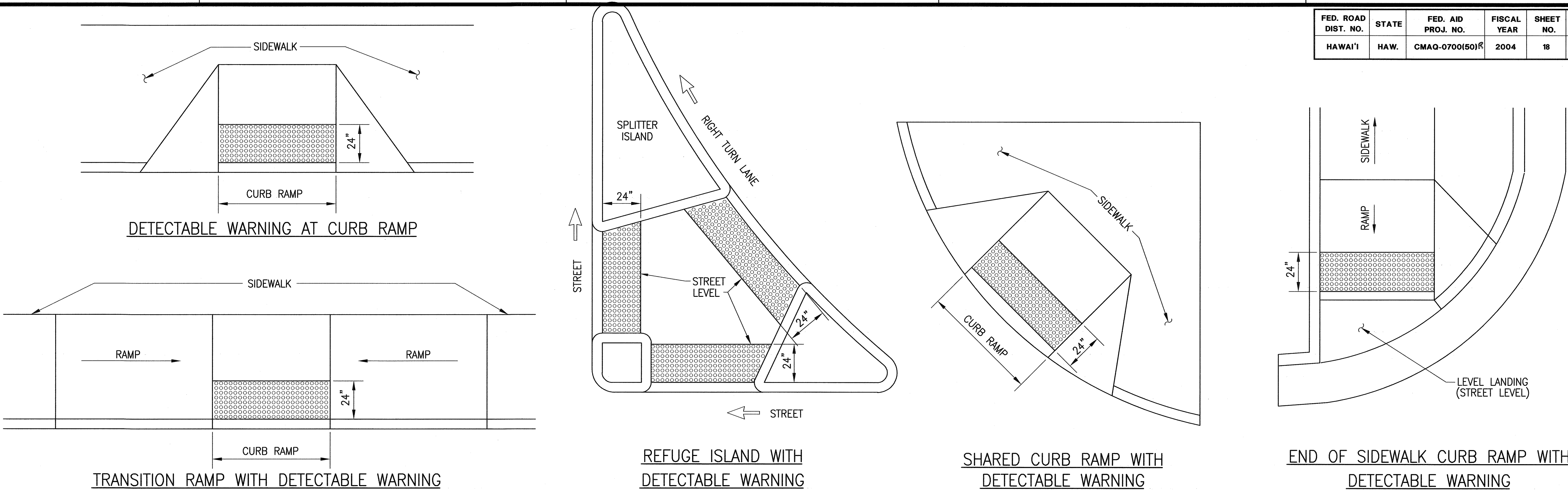
*Howard K. Endo* 9/26/04  
SIGNATURE DATE

"OBSERVATION OF CONSTRUCTION" IS DEFINED IN CHAPTER 16-115, HAWAII ADMINISTRATIVE RULES ENTITLED "PROFESSIONAL ENGINEERS, ARCHITECTS, SURVEYORS AND LANDSCAPE ARCHITECTS".

STATE OF HAWAII  
DEPARTMENT OF TRANSPORTATION  
HIGHWAYS DIVISION

TYPICAL DETAILS  
Pedestrian Facilities & ADA Compliance  
at Various Locations on Kaua'i  
Fed. Aid Proj. No. CMAQ-0700(50)R  
Scale: AS NOTED Date: AUG. 13, 2004  
SHEET No. 1 OF 1 SHEETS

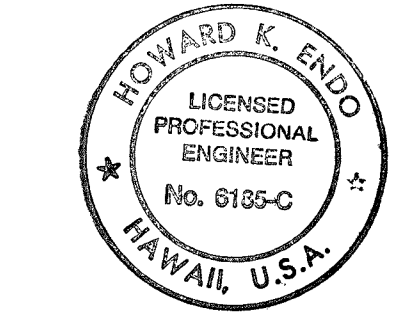
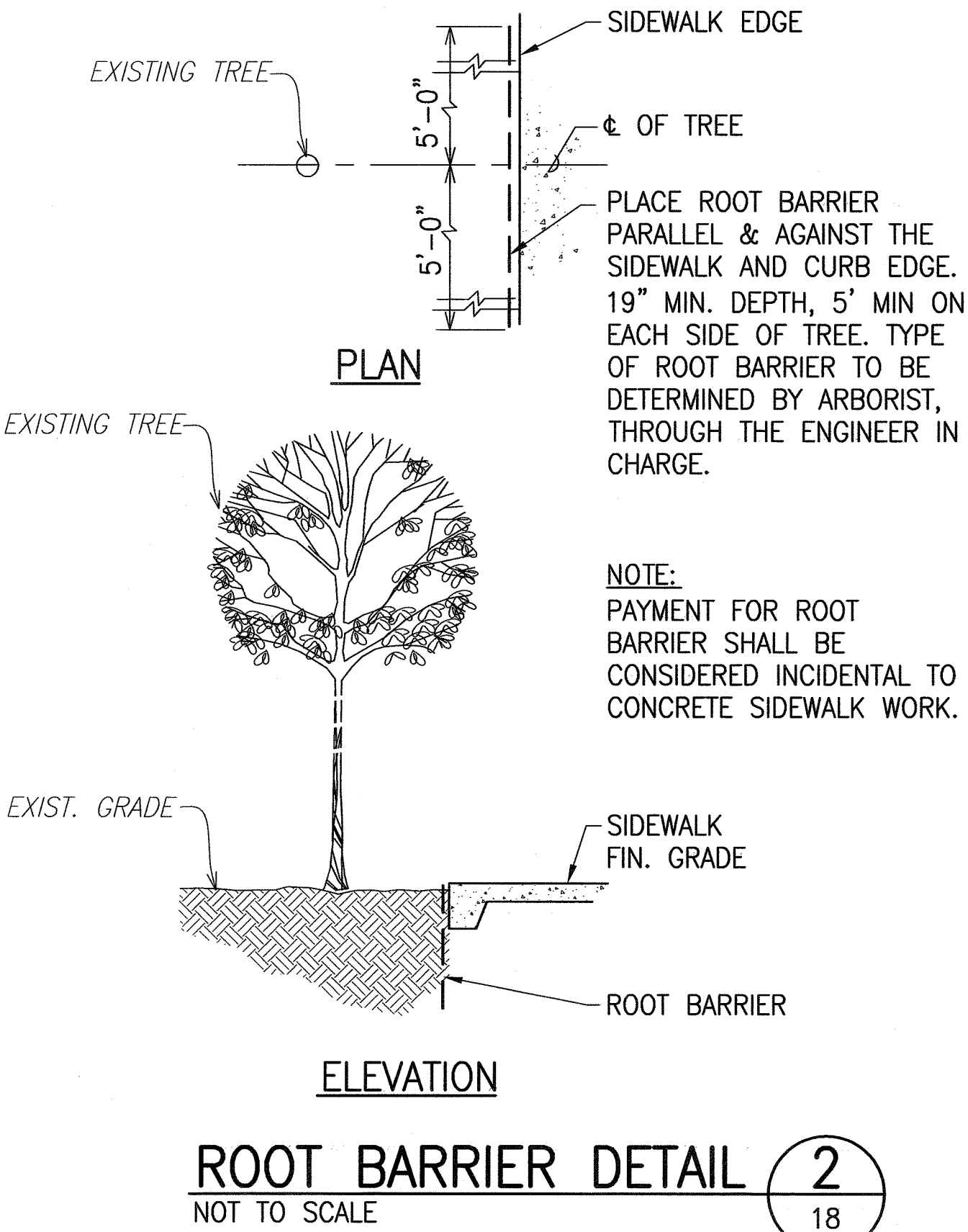
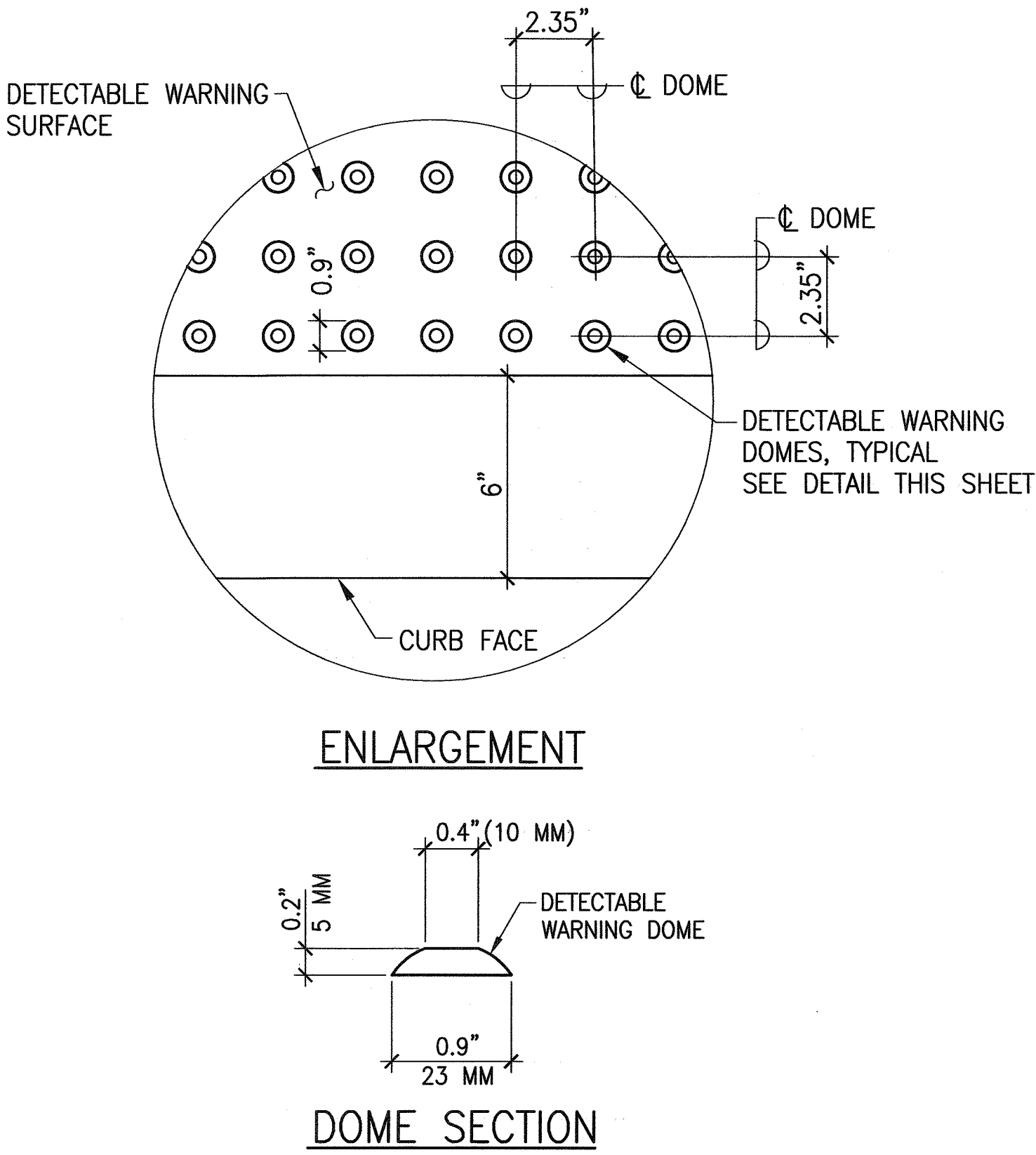
FED. ROAD DIST. NO.	STATE	FED. AID PROJ. NO.	FISCAL YEAR	SHEET NO.	TOTAL SHEETS
HAWAI'I	HAW.	CMAQ-0700(50)R	2004	18	100



TYPICAL INSTALLATION OF DETECTABLE WARNINGS 1  
NOT TO SCALE 18

NOTES:

1. DETECTABLE WARNINGS SHALL BE 24 INCHES IN THE DIRECTION OF TRAVEL AND EXTEND THE FULL WIDTH OF THE CURB RAMP OR FLUSH SURFACE (DOES NOT INCLUDE FLARES).
2. TRUNCATED DOMES SHALL HAVE A DIAMETER OF 0.9 INCH AT THE BOTTOM, A DIAMETER OF 0.4 INCH AT THE TOP, A HEIGHT OF 0.2 INCH AND A CENTER-TO-CENTER SPACING OF 2.35 INCHES MEASURED ALONG ONE SIDE OF A SQUARE ARRANGEMENT.
3. DOMES SHALL BE ALIGNED ON A SQUARE GRID IN THE PREDOMINANT DIRECTION OF TRAVEL TO PERMIT WHEELS TO ROLL BETWEEN THE DOMES.
4. THE DETECTABLE WARNING SHALL BE "SAFETY YELLOW".
5. THE MATERIAL USED TO PROVIDE VISUAL CONTRAST SHALL BE AN INTEGRAL PART OF THE DETECTABLE WARNING SURFACE.
6. THE DETECTABLE WARNING SHALL BE LOCATED SO THAT THE EDGE NEAREST THE CURB LINE OR OTHER POTENTIAL HAZARD IS 6 TO 8 INCHES FROM THE CURB LINE.
7. ALL COSTS ASSOCIATED WITH THE DETECTABLE WARNING SURFACE SHALL BE CONSIDERED INCIDENTAL TO THE COST FOR THE CURB RAMP CONSTRUCTION. NO ADDITIONAL COMPENSATION SHALL BE MADE TO THE CONTRACTOR FOR INSTALLATION OF THE DETECTABLE WARNING SURFACE.



EXPIRATION DATE: 4/30/06  
THIS WORK WAS PREPARED BY ME OR UNDER MY SUPERVISION AND CONSTRUCTION OF THIS PROJECT WILL BE UNDER MY OBSERVATION.  
*Howard K. Endo* 9/22/04  
SIGNATURE DATE  
"OBSERVATION OF CONSTRUCTION" IS DEFINED IN CHAPTER 16-115, HAWAII ADMINISTRATIVE RULES ENTITLED "PROFESSIONAL ENGINEERS, ARCHITECTS, SURVEYORS AND LANDSCAPE ARCHITECTS".

STATE OF HAWAII

DEPARTMENT OF TRANSPORTATION

HIGHWAYS DIVISION

SIDEWALK DETAILS – 1

Pedestrian Facilities & ADA Compliance

at Various Locations on Kaua'i

Fed. Aid Proj. No. CMAQ-0700(50)R

Scale: AS NOTED

Date: AUG. 13, 2004

SHEET No. 1 OF 2 SHEETS

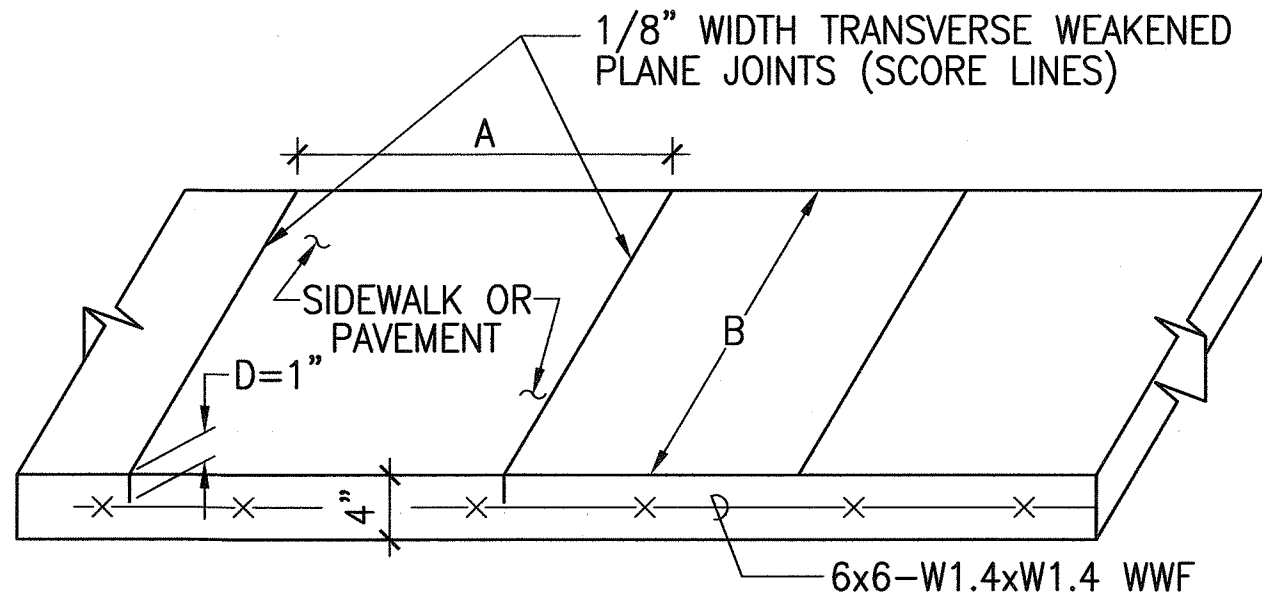
18

SURVEY PLOTTED BY	DATE
DRAWN BY	
CHECKED BY	
DESIGNED BY	
QUANTITIES BY	
CHECKED BY	
No.	

0351-SW-DET-01.dwg

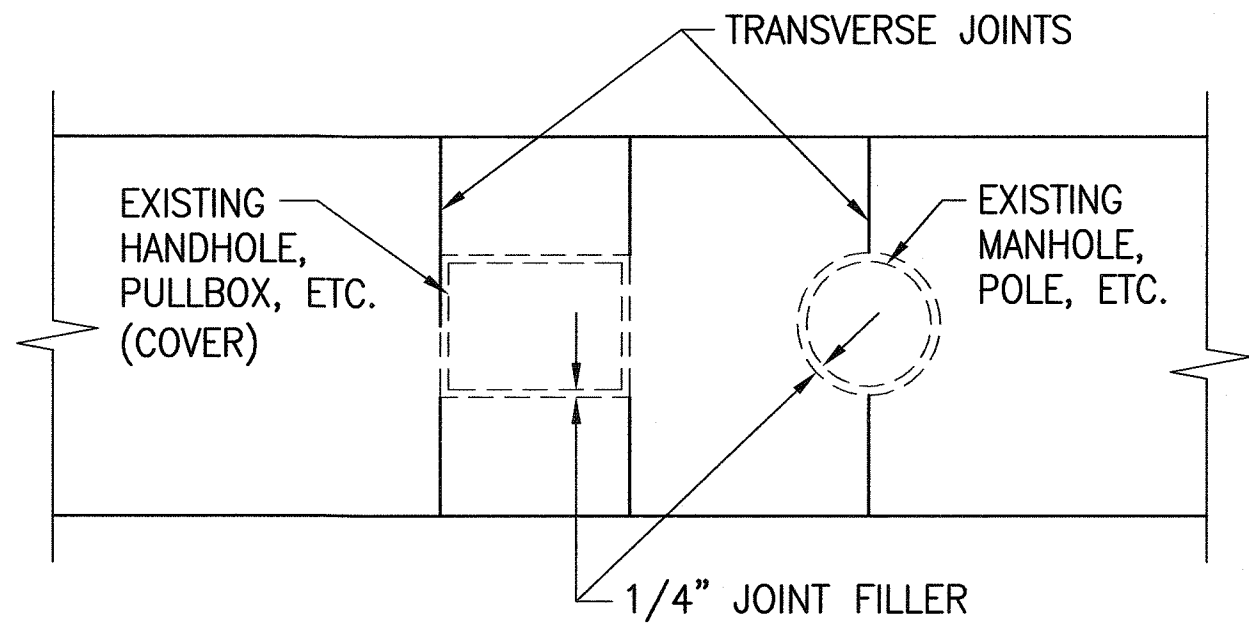


FED. ROAD DIST. NO.	STATE	FED. AID PROJ. NO.	FISCAL YEAR	SHEET NO.	TOTAL SHEETS
HAWAII	HAW.	CMAQ-0700(50)R	2004	19	100

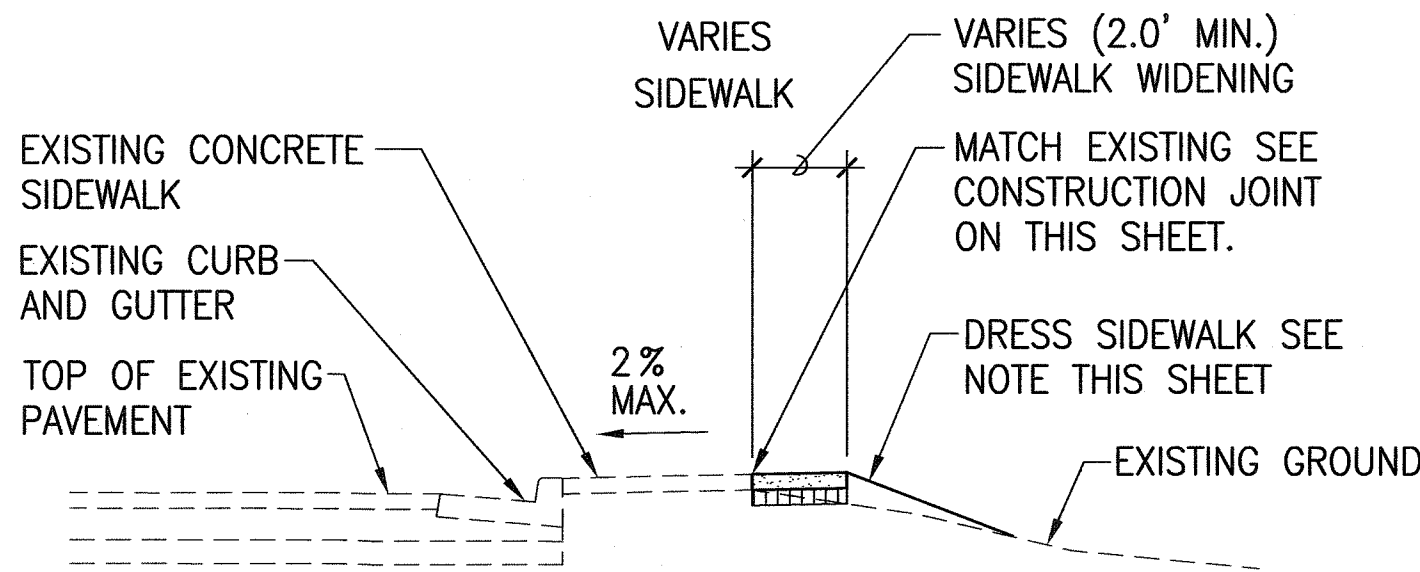


NOTE:  
A = 6' IF B ≤ 8', IF B > 8', ADD LONGITUDINAL JOINT

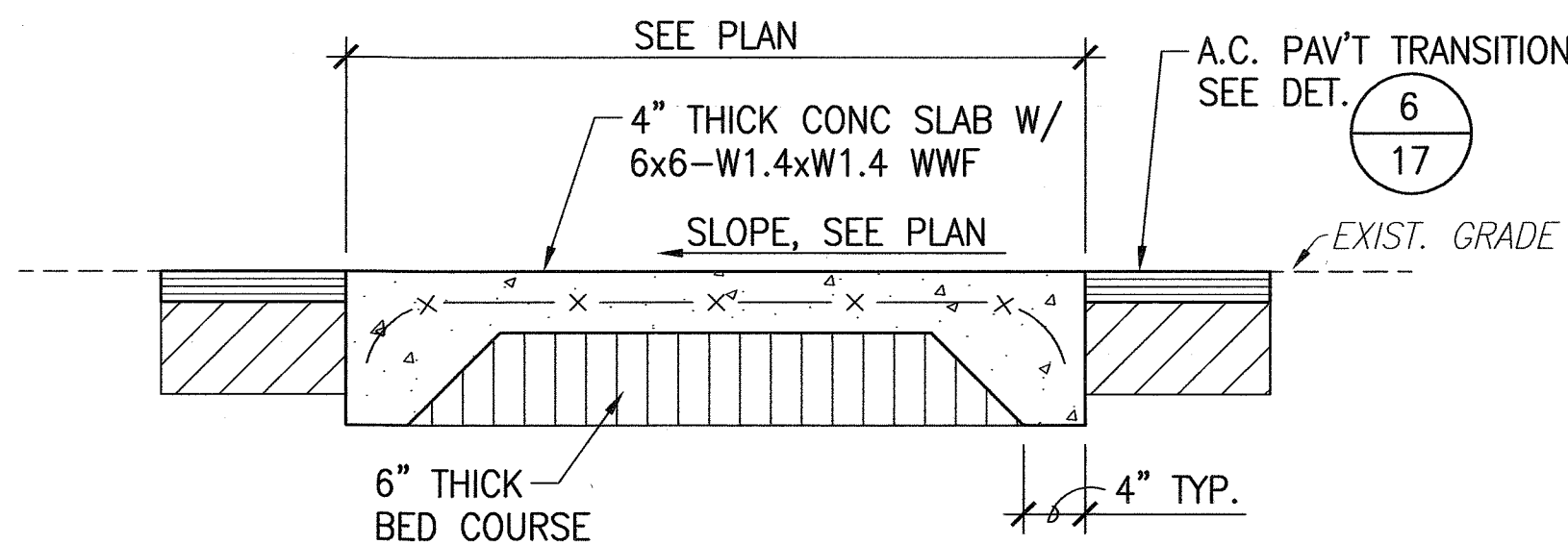
**SIDEWALK SCORE LINE DETAIL 1**  
NOT TO SCALE



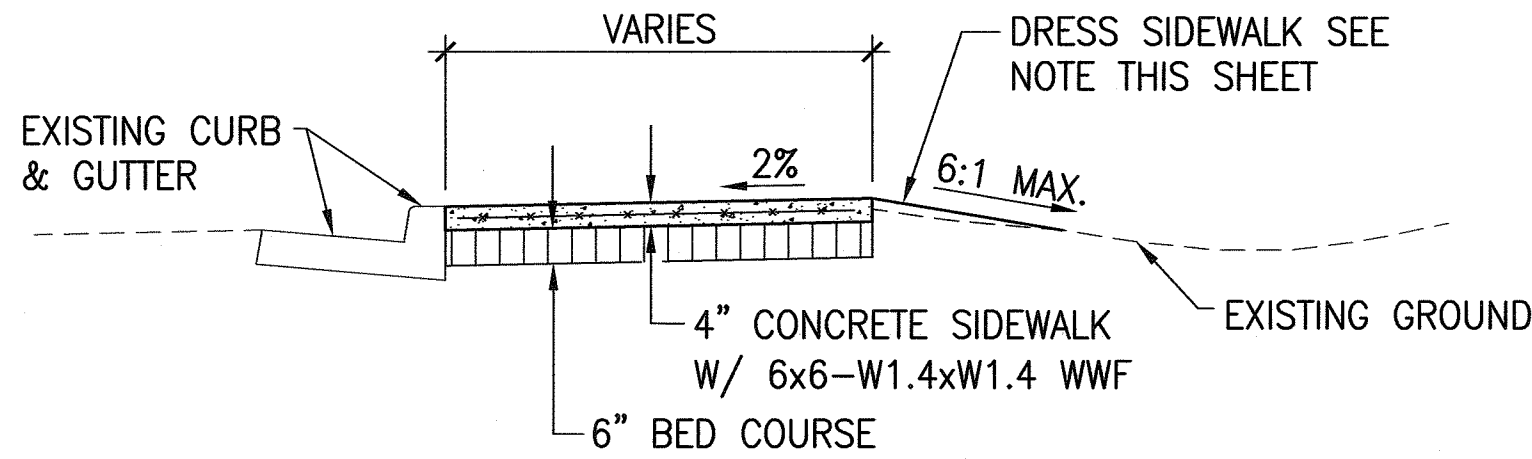
**SIDEWALK ISOLATION JOINT DETAIL 4**  
NOT TO SCALE



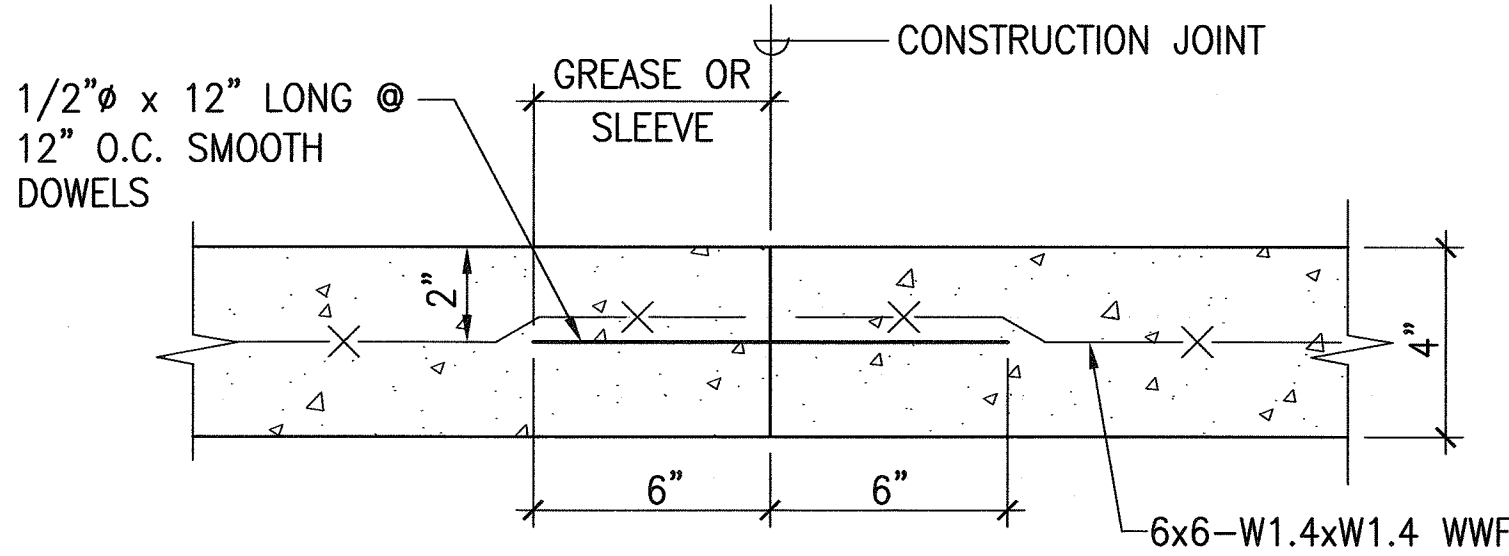
**SIDEWALK WIDENING SECTION 6**  
NOT TO SCALE



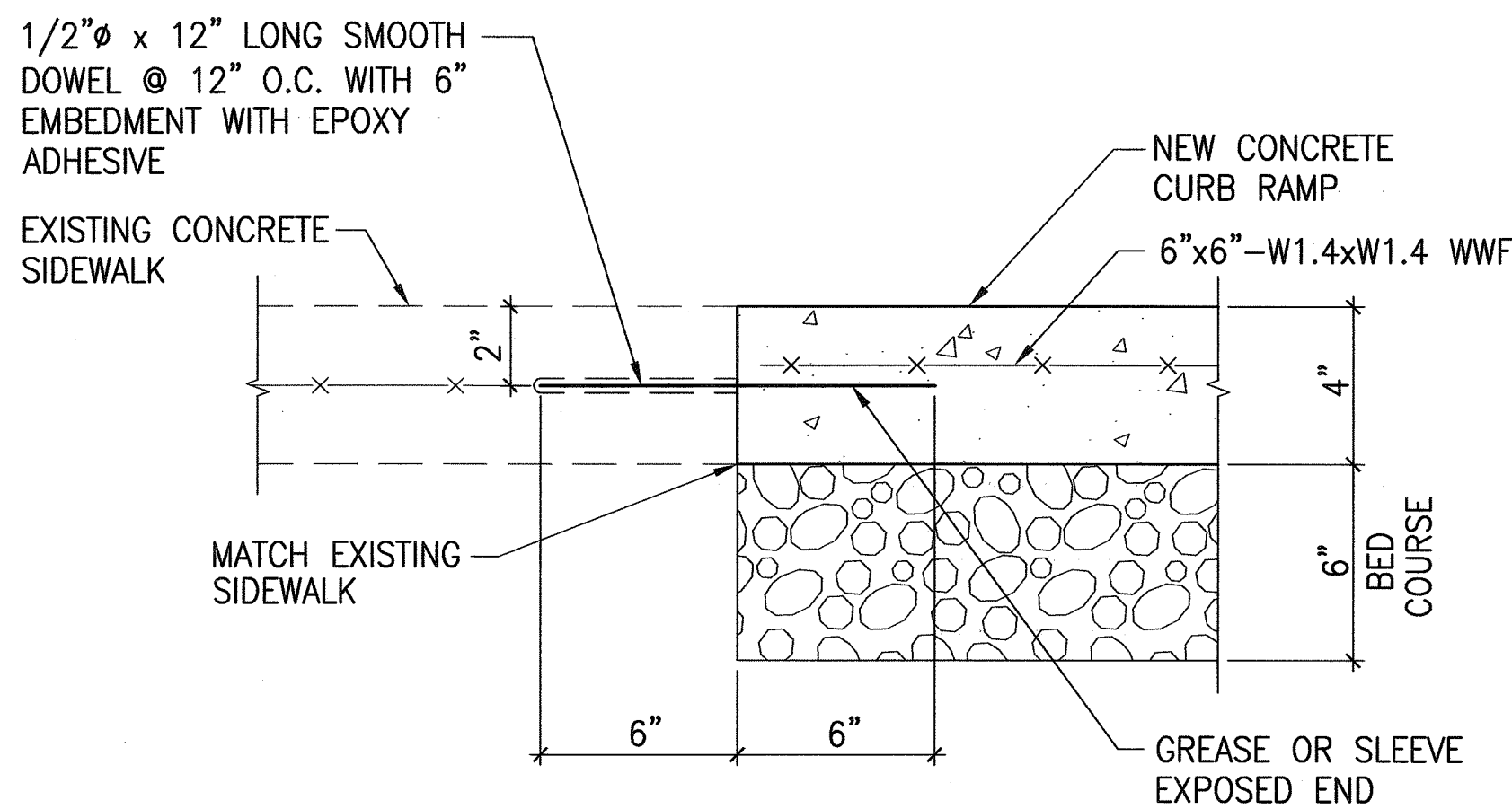
**CONCRETE PAD DETAIL 9**  
NOT TO SCALE



**SIDEWALK DETAIL 2**  
NOT TO SCALE



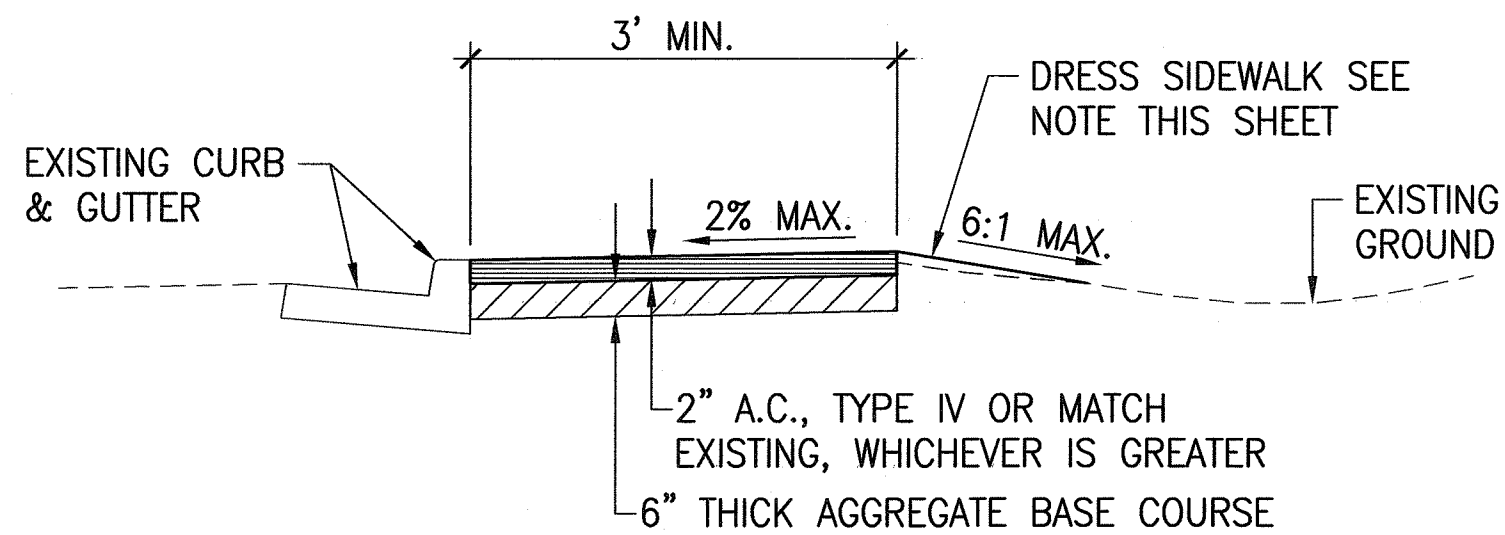
**TRANSVERSE CONSTRUCTION JOINT DETAIL 5**  
NOT TO SCALE



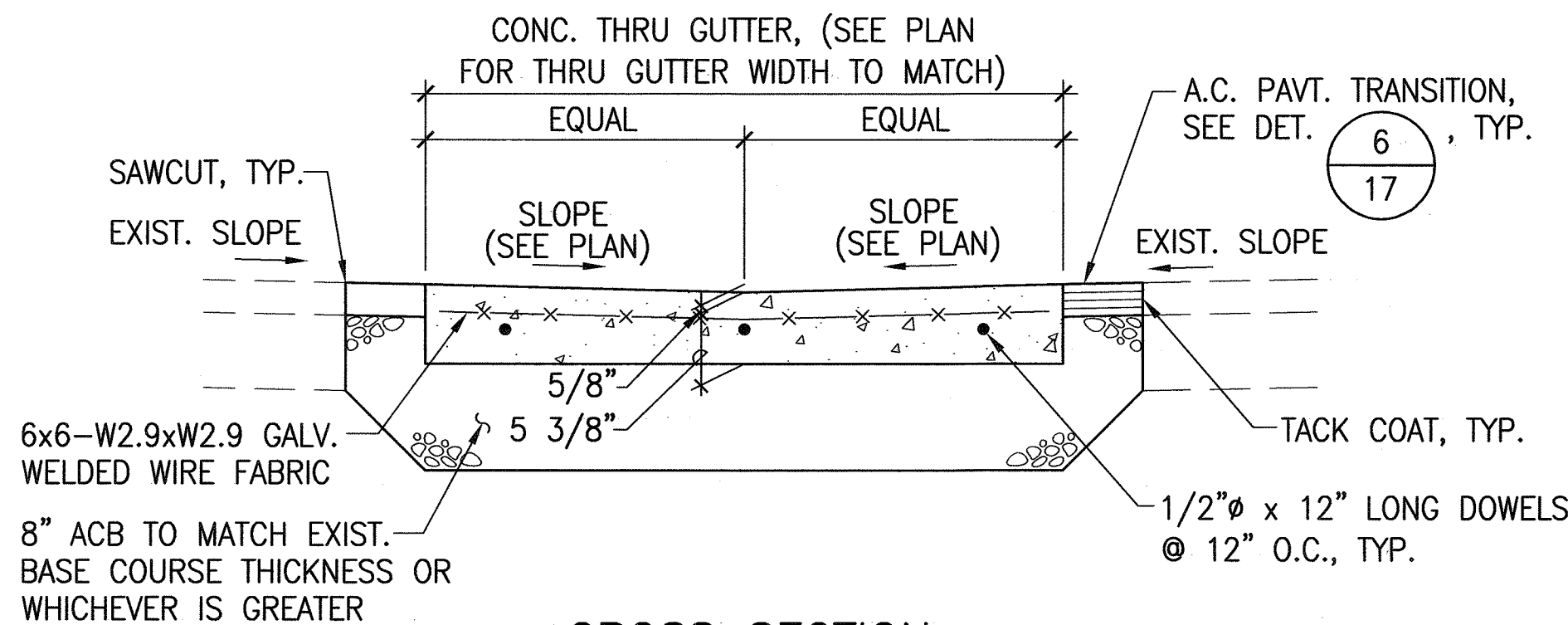
**TYPICAL CONSTRUCTION JOINT AT EXISTING SIDEWALK 7**  
NOT TO SCALE

NOTES:

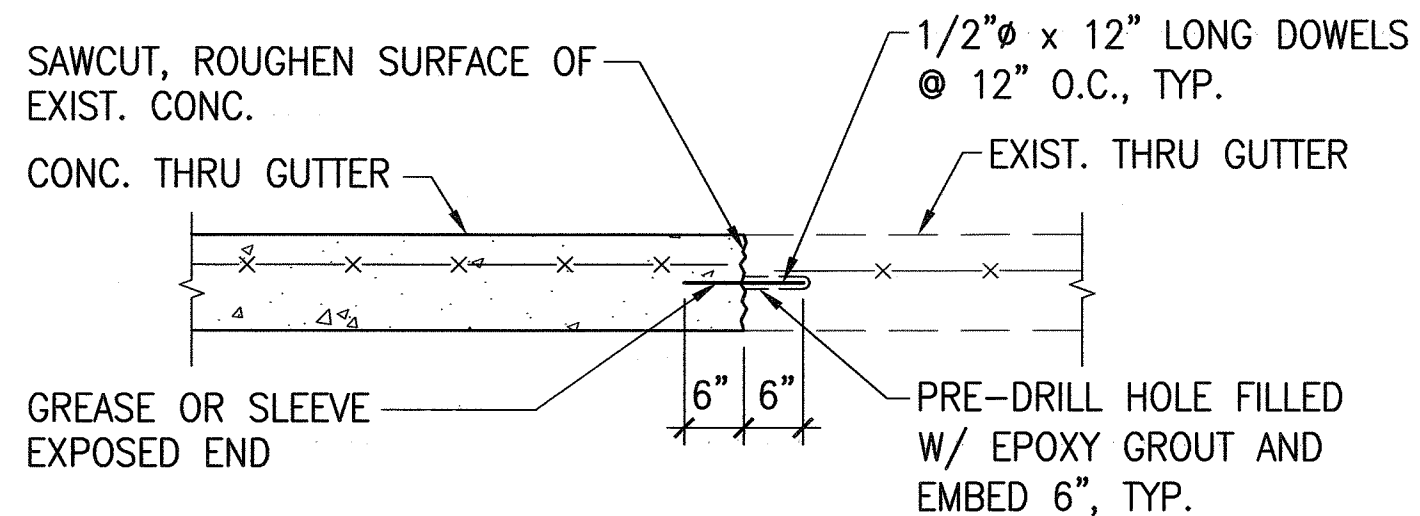
1. DRESSING OF SIDEWALK SHALL CONSIST OF CLEARING, GRUBBING, GRADING, RESHAPING AND COMPACTING THE AREA ADJACENT TO THE IMPROVEMENT WITH SUITABLE MATERIAL AS SHOWN ON THE PLANS AND/OR AS DIRECTED BY THE ENGINEER. IF EXISTING GROUND IS ASPHALT OR CONCRETE SURFACE, DRESS SIDEWALK WITH A.C. PAVEMENT, MIX NO. V. THIS WORK SHALL BE CONSIDERED INCIDENTAL TO THE NEW SIDEWALK.
2. TRANSVERSE AND LONGITUDINAL WEAKENED PLANE JOINTS FOR SIDEWALK SHALL BE CONSIDERED INCIDENTAL TO THE NEW SIDEWALK.
3. INSTALLATION OF DOWELS AND TIE BARS INCLUDING DRILLING, AND EPOXY GROUT SHALL BE INCIDENTAL TO SIDEWALK.



**A.C. SIDEWALK DETAIL 3**  
NOT TO SCALE

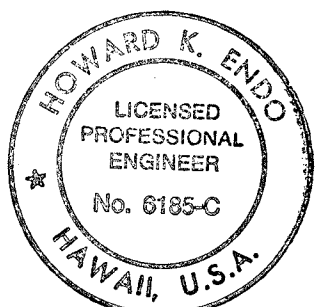


CROSS SECTION



LONGITUDINAL SECTION

**CONCRETE THRU GUTTER CONNECTION DETAIL 8**  
NOT TO SCALE



EXPIRATION DATE: 4/30/06

THIS WORK WAS PREPARED BY ME OR UNDER MY SUPERVISION AND CONSTRUCTION OF THIS PROJECT WILL BE UNDER MY OBSERVATION.

Signature: *Howard K. Endo* Date: *9/26/04*

"OBSERVATION OF CONSTRUCTION" IS DEFINED IN CHAPTER 16-115, HAWAII ADMINISTRATIVE RULES ENTITLED "PROFESSIONAL ENGINEERS, ARCHITECTS, SURVEYORS AND LANDSCAPE ARCHITECTS".

STATE OF HAWAII  
DEPARTMENT OF TRANSPORTATION  
HIGHWAYS DIVISION

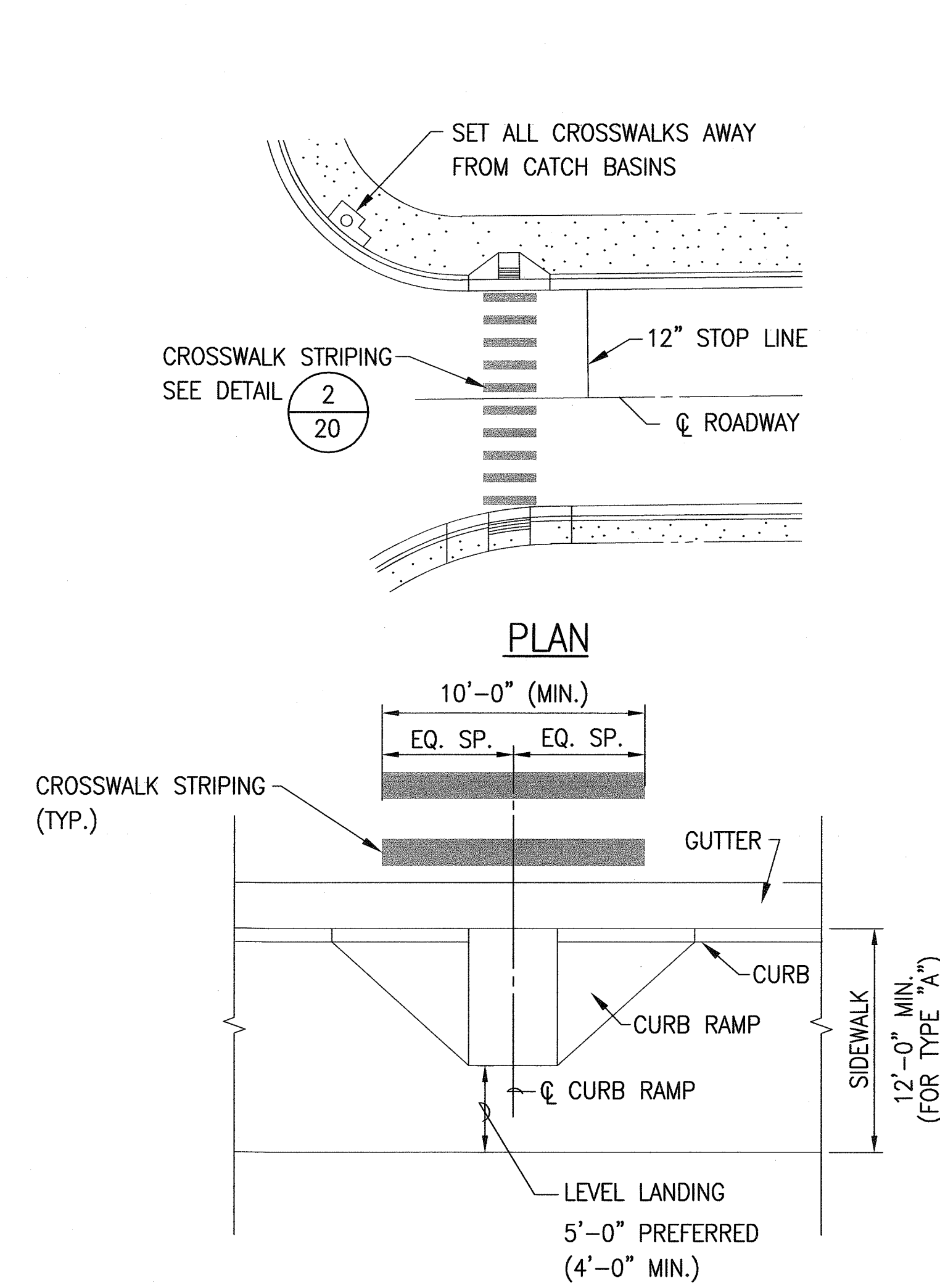
**SIDEWALK DETAILS - 2**

*Pedestrian Facilities & ADA Compliance  
at Various Locations on Kaua'i  
Fed. Aid Proj. No. CMAQ-0700(50)R*

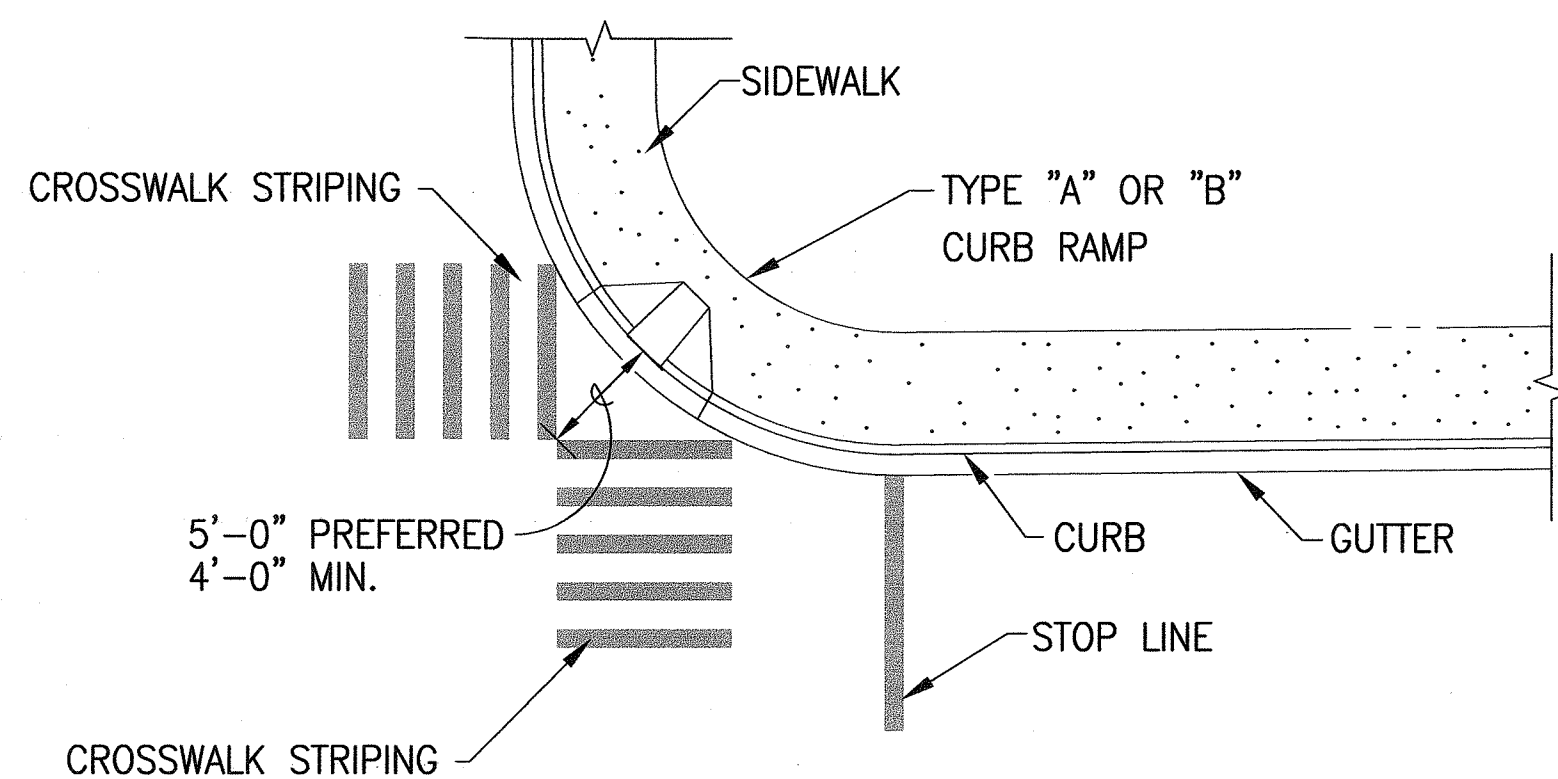
Scale: AS NOTED Date: AUG. 13, 2004

SHEET No. 2 OF 2 SHEETS

FED. ROAD DIST. NO.	STATE	FED. AID PROJ. NO.	FISCAL YEAR	SHEET NO.	TOTAL SHEETS
HAWAII	HAW.	CMAQ-0700(50)R	2004	20	100

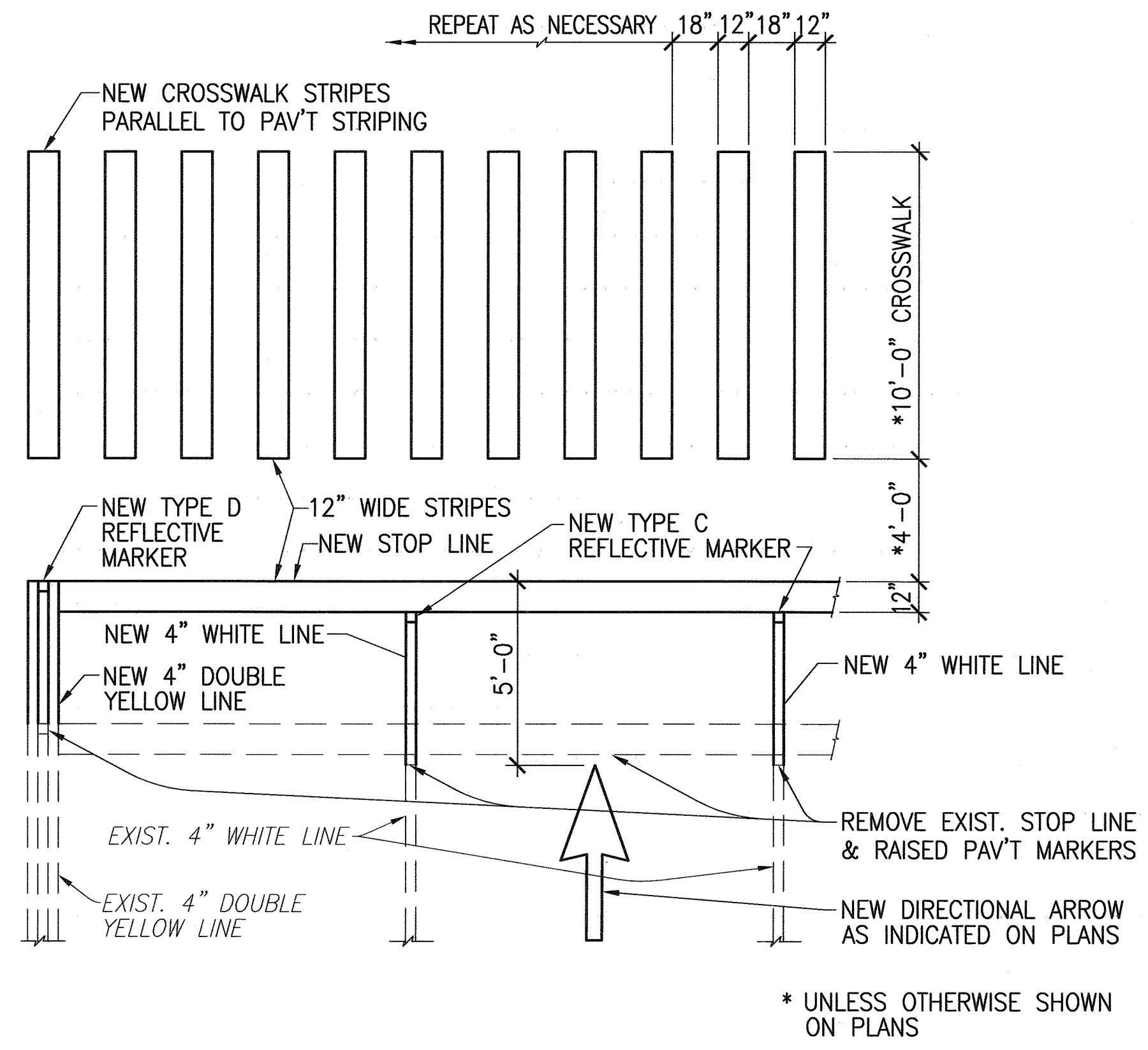


TYPICAL CROSSWALK STRIPING  
AT CURB RAMP



TYPICAL CROSSWALK STRIPING  
AT DIAGONAL CURB RAMP

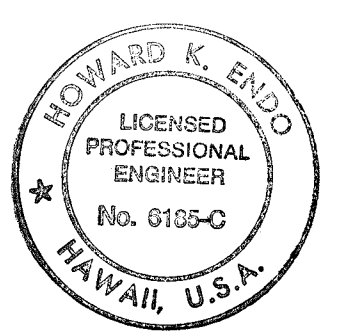
TYPICAL CROSSWALK STRIPING FOR CURB RAMPS 1  
NOT TO SCALE 20



TYPICAL CROSSWALK, STOP BAR AND  
PAV'T MARKING & STRIPING MODIFICATION 2  
SCALE: 1/4"=1'-0" 20

DATE	_____
SURVEY PLOTTED BY	_____
DRAWN BY	_____
DESIGNED BY	_____
CHECKED BY	_____
ORIGINAL PLAN	_____
NOTE BOOK	_____
No.	_____

0351-CR-STRIPING.dwg



EXPIRATION DATE: 4/30/06  
THIS WORK WAS PREPARED BY ME OR UNDER MY SUPERVISION AND CONSTRUCTION OF THIS PROJECT WILL BE UNDER MY OBSERVATION.  
Signature: *Howard K. Endo* Date: 9/24/04  
"OBSERVATION OF CONSTRUCTION" IS DEFINED IN CHAPTER 16-115, HAWAII ADMINISTRATIVE RULES ENTITLED "PROFESSIONAL ENGINEERS, ARCHITECTS, SURVEYORS AND LANDSCAPE ARCHITECTS".

STATE OF HAWAII  
DEPARTMENT OF TRANSPORTATION  
HIGHWAYS DIVISION

CURB RAMP STRIPING DETAILS  
  
Pedestrian Facilities & ADA Compliance  
at Various Locations on Kaua'i  
Fed. Aid Proj. No. CMAQ-0700(50)R  
Scale: AS NOTED Date: AUG. 13, 2004  
SHEET No. 1 OF 1 SHEETS