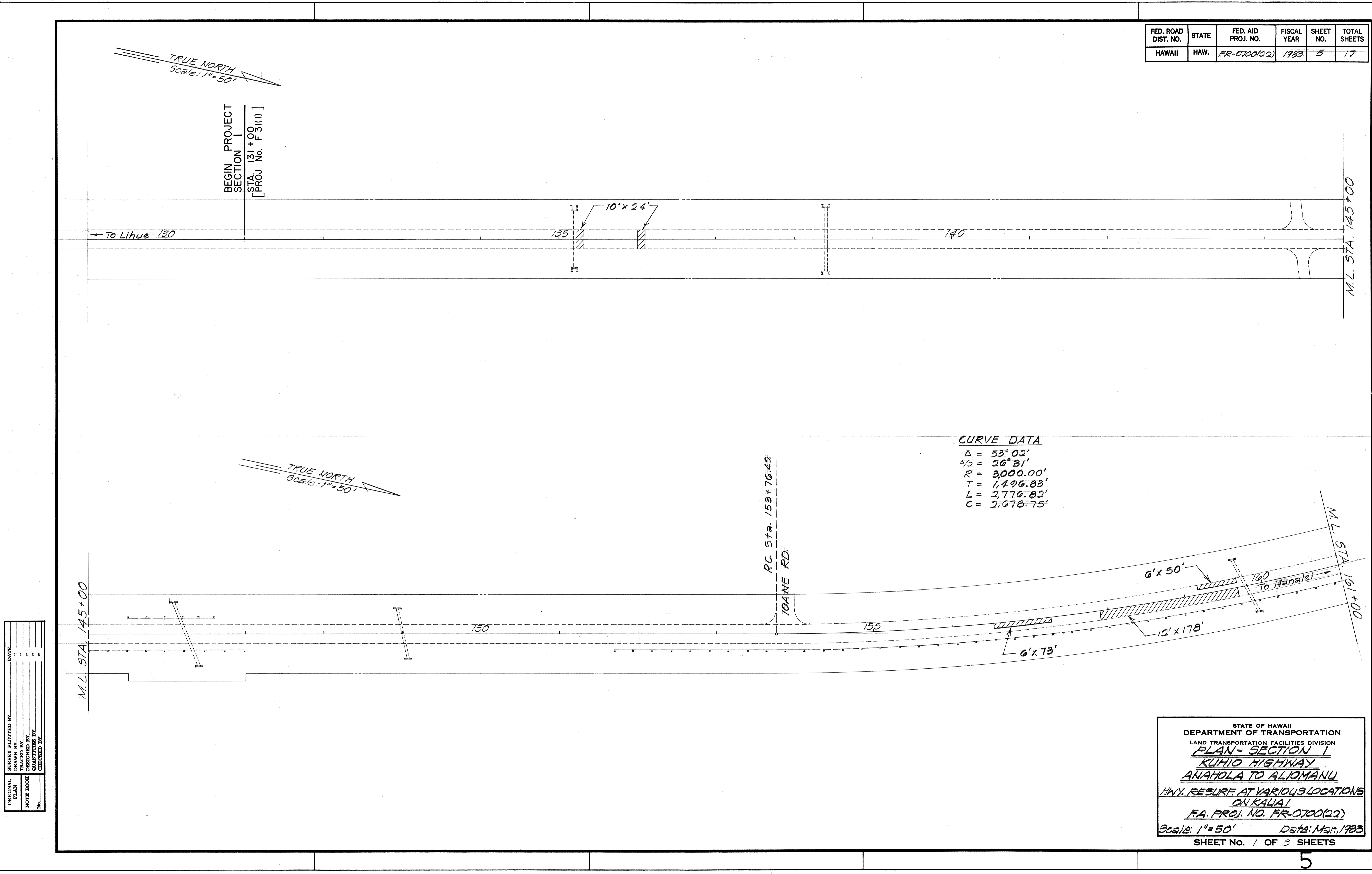


FED. ROAD DIST. NO.	STATE	FED. AID PROJ. NO.	FISCAL YEAR	SHEET NO.	TOTAL SHEETS
HAWAII	HAW.	FR-0700(22)	1983	5	17

ORIGINAL PLAN	SURVEY PLOTTED BY	DATE
NOTE BOOK	DRAWN BY	
	DESIGNED BY	
	CHECKED BY	

CURVE DATA

$\Delta = 53^{\circ}02'$
 $\frac{\Delta}{2} = 26^{\circ}31'$
 $R = 3,000.00'$
 $T = 1,496.83'$
 $L = 2,776.82'$
 $C = 2,678.75'$

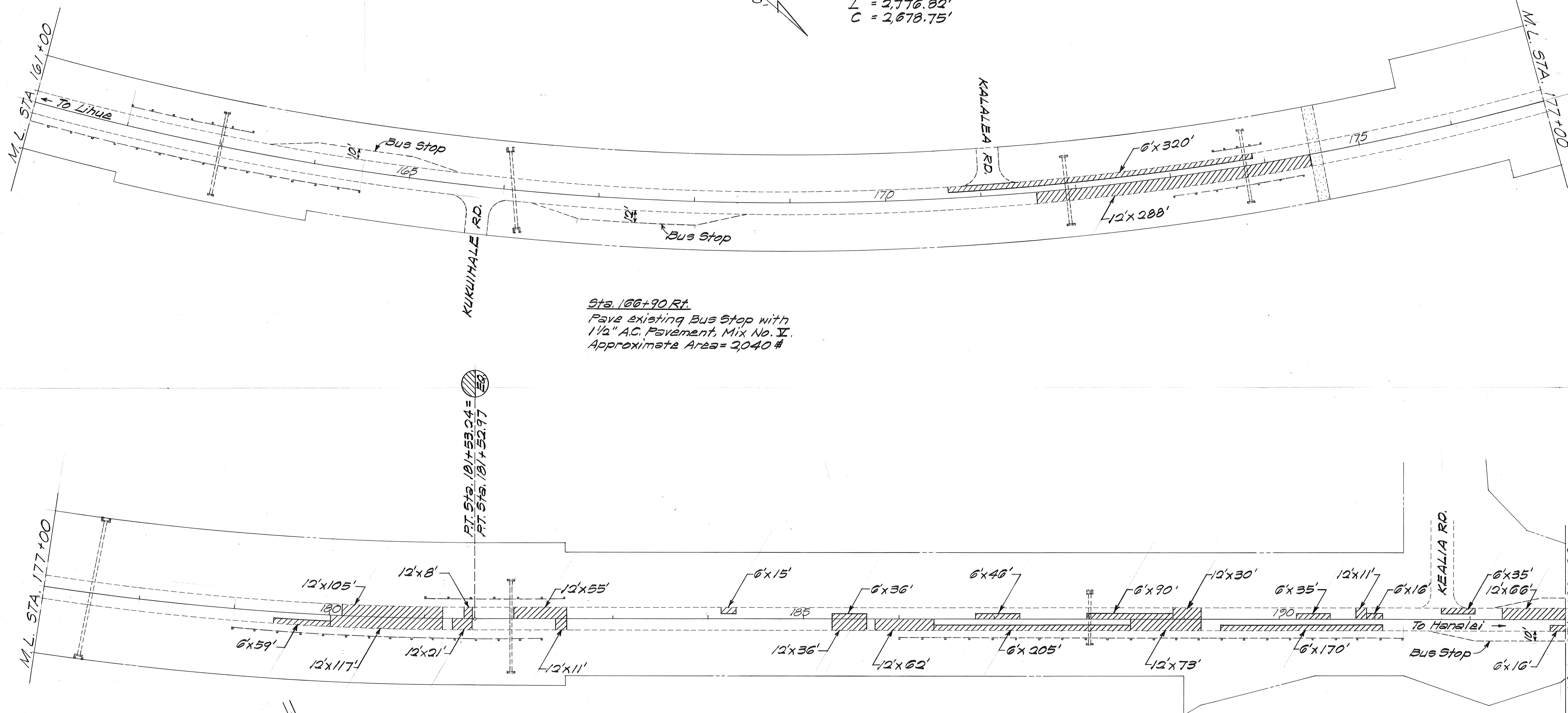


FED. ROAD DIST. NO.	STATE	FED. AID PROJ. NO.	FISCAL YEAR	SHEET NO.	TOTAL SHEET
HAWAII	HAW.	FR-0700(92)	1983	6	17

Sta. 164+50 Lt.

Pave existing Bus Stop with
1 1/2" A.C. Pavement, Mix No. I.
Approximate Area = 1,500 #

CURVE DATA

$$\begin{aligned}\Delta &= 53^{\circ} 02' \\ 4/2 &= 26^{\circ} 31' \\ R &= 3,000' \\ T &= 1,496.83' \\ L &= 2,776.82' \\ C &= 2,678.75'\end{aligned}$$


Sta. 166+90 Rf.

Pave existing Bus Stop with
1 1/2" A.C. Pavement, Mix No. V.
Approximate Area = 3040 #

$$\frac{P.T. Sta. 101+53.24}{P.T. Sta. 101+52.97} = \frac{\text{Shaded Circle}}{\text{Circle with EQ}}$$

Sta. 192+50 Rt.

Paye existing Bus Stop
with 1 1/2" A.C. Pavement,
Mix No. I
Approximate Area = 1,500 sq

STATE OF HAWAII
DEPARTMENT OF TRANSPORTATION
LAND TRANSPORTATION FACILITIES DIVISION
PLAN - SECTION 1
KUHIO HIGHWAY
ANAHOLA TO ALIOMANU
HWY. RESUME AT VARIOUS LOCATIONS
ON KAUAI
F.A. PROJ. NO. PR-OTD(32)
Scale: 1" = 50' Date: Mar, 1983
SHEET NO. 2 OF 3 SHEETS

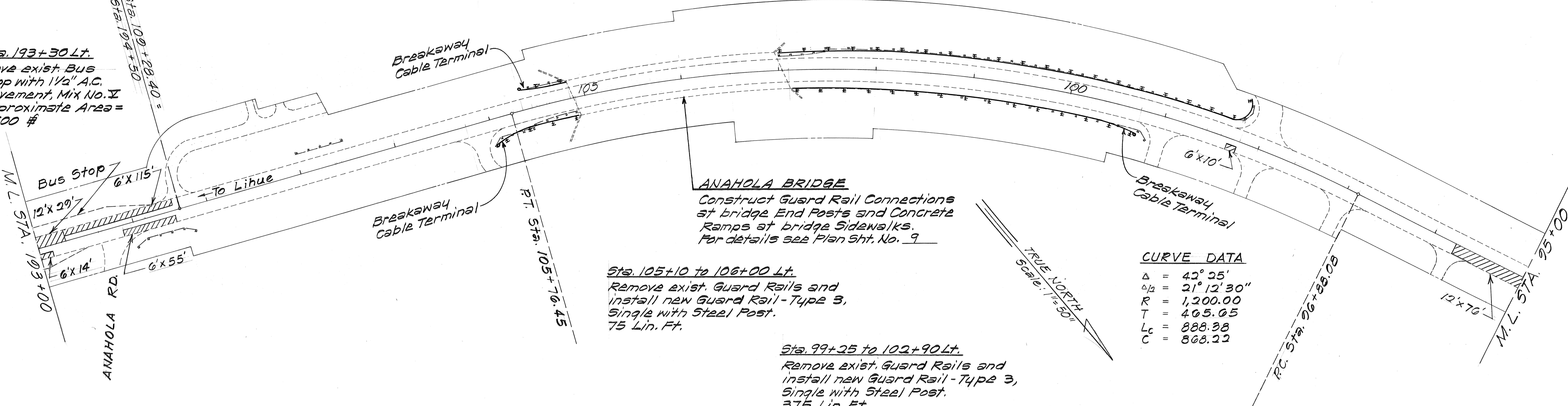
FED. ROAD DIST. NO.	STATE	FED. AID PROJ. NO.	FISCAL YEAR	SHEET NO.	TOTAL SHEETS
HAWAII	HAW.	FR-0700(22)	1983	J	17

Sta. 106+00 to 107+35 Rt.
Pave exist. Paved Shoulders
with 1 1/2" A.C. Pavement, Mix No. I
Approximate Area = 1,350 #

Sta. 105+15 to 105+65 Rt.
Remove exist. Guard Rails and
install new Guard Rail - Type 3,
Single with Steel Post.
25 Lin. Ft.

Sta. 98+20 to 103+00 Rt.
Remove exist. Guard Rails and
install new Guard Rail - Type 3,
Single with Steel Post.
500 Lin. Ft.

Sta. 193+30 Lt.
Pave exist. Bus
Stop with 1 1/2" A.C.
Pavement, Mix No. I
Approximate Area =
1,500 #



ANAHOLA BRIDGE
Construct Guard Rail Connections
at bridge End Posts and Concrete
Ramps at bridge Sidewalks.
For details see Plan Sht. No. 9

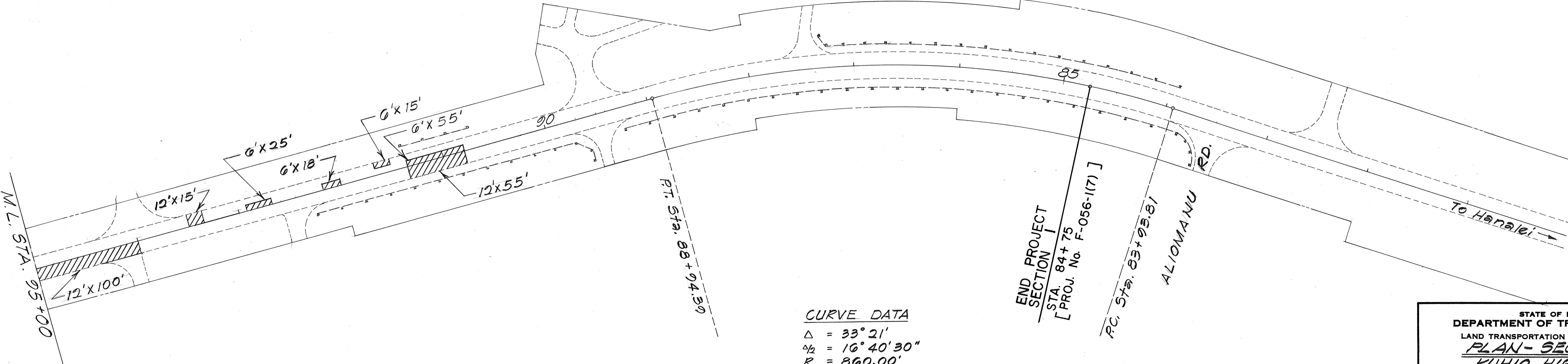
CURVE DATA

$\Delta = 42^{\circ} 25'$
 $\Delta P = 21^{\circ} 12' 30''$
 $R = 1,200.00$
 $T = 405.05$
 $L_c = 888.38$
 $C = 868.22$

Sta. 105+10 to 106+00 Lt.
Remove exist. Guard Rails and
install new Guard Rail - Type 3,
Single with Steel Post.
75 Lin. Ft.

Sta. 99+25 to 102+90 Lt.
Remove exist. Guard Rails and
install new Guard Rail - Type 3,
Single with Steel Post.
375 Lin. Ft.

TRUE NORTH
Scale: 1"=50'



CURVE DATA

$\Delta = 33^{\circ} 21'$
 $\Delta P = 16^{\circ} 40' 30''$
 $R = 860.00'$
 $T = 257.60'$
 $L_c = 500.58'$
 $C = 493.54'$

END PROJECT
SECTION 1
STA. 84+75
[PROJ. No. F-056-(17)]
RC Sta. 83+93.81
ALIOMANU RD.
To Hanalei

STATE OF HAWAII

DEPARTMENT OF TRANSPORTATION

LAND TRANSPORTATION FACILITIES DIVISION

PLAN - SECTION 1

KUHIO HIGHWAY

ANAHOLA TO ALIOMANU

HWY. RESURF AT VARIOUS LOCATIONS

ON KAUAI

F.A. PROJ. NO. FR-0700(22)

Scale: 1"=50' Date: Mar. 1983

SHEET NO. 3 OF 3 SHEETS

SURVEY PLOTTED BY	DATE
DRAWN BY	
TRACED BY	
CHECKED BY	
NOTE BOOK	
No.	