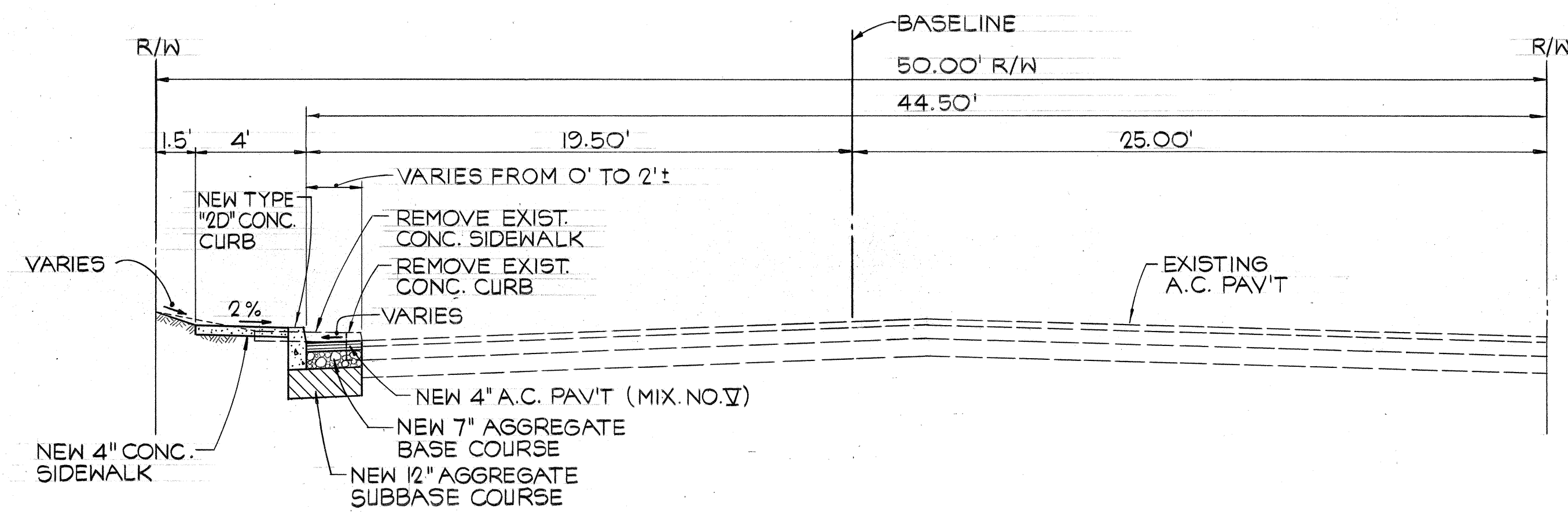
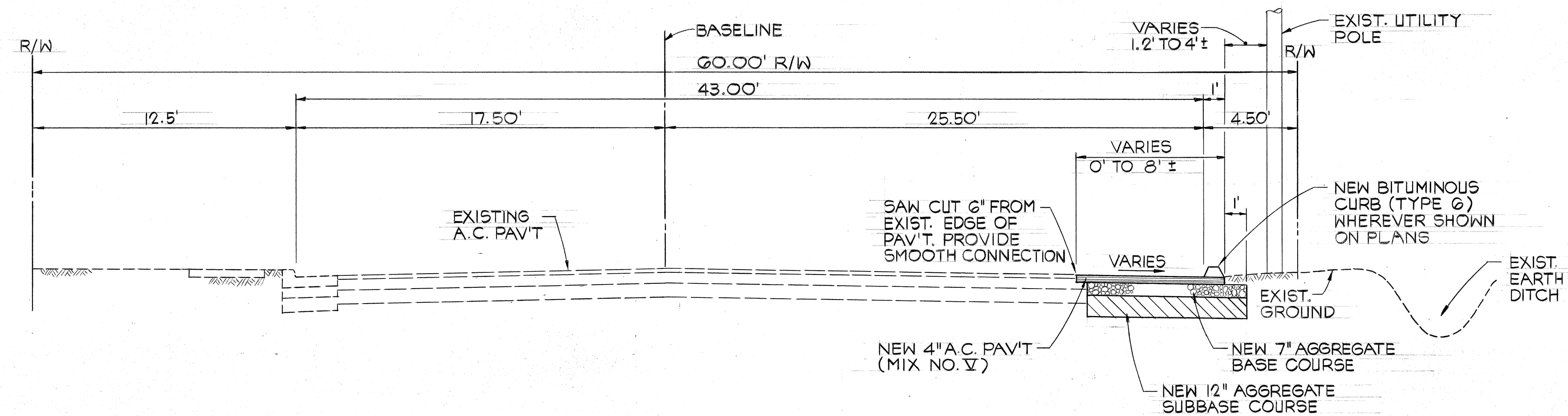


FED. ROAD DIST. NO.	STATE	FED. AID PROJ. NO.	FISCAL YEAR	SHEET NO.	TOTAL SHEETS
HAWAII	HAW.	R56-0570(2)	1980	2	37



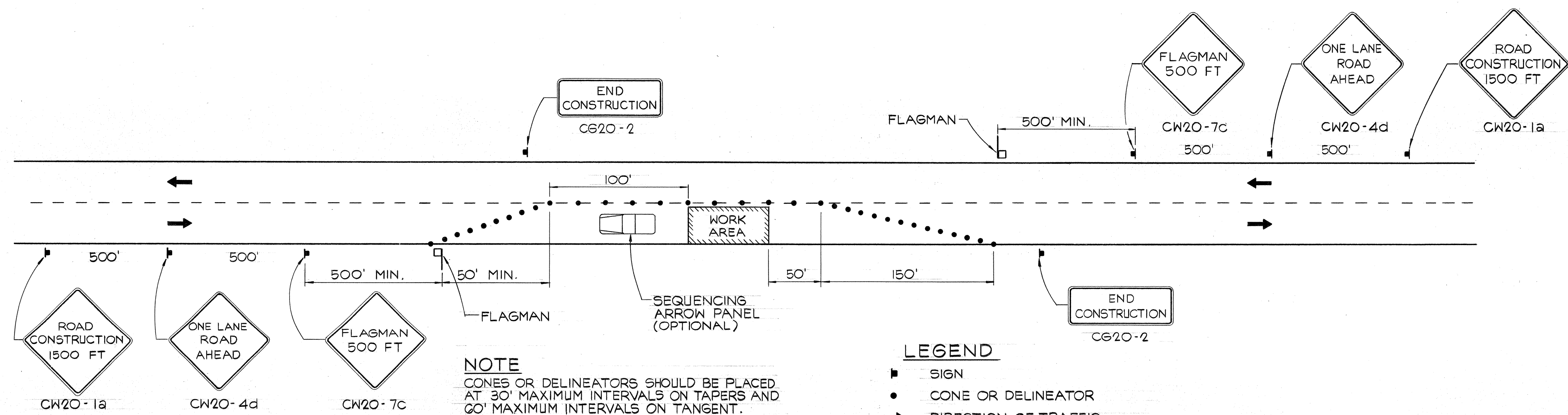
TYPICAL SECTION ~ STA. 110+75 TO STA. 113+02
SCALE: 1/4"=1'-0"



TYPICAL SECTION ~ STA. 115+72 TO STA. 124+40
SCALE: 1/4"=1'-0"

CONSTRUCTION NOTES

- LOCATIONS OF EXISTING UNDERGROUND STRUCTURES AND UTILITIES, SUCH AS PIPELINES, CONDUITS, CABLES, ETC., AS SHOWN ON PLANS ARE APPROXIMATE ONLY. IT IS NOT THE INTENT OF THESE PLANS TO SHOW THE EXACT LOCATION OF ALL UNDERGROUND UTILITIES AND STRUCTURES. IT IS THE RESPONSIBILITY OF THE CONTRACTOR TO VERIFY THE LOCATIONS OF ALL EXISTING UTILITIES WITH THE RESPECTIVE OWNERS. EXISTING UTILITIES DAMAGED BY THE CONTRACTOR SHALL BE REPAIRED BY THE CONTRACTOR AT HIS OWN COST.
- THE LOCATIONS OF THE TRAFFIC SIGNAL STANDARDS, TRAFFIC SIGNAL STANDARDS WITH MAST-ARM, PEDESTRIAN PUSH BUTTONS, TRAFFIC CONTROLLERS, PULL BOXES, CONDUITS AND DETECTORS SHALL BE STAKED OUT IN THE FIELD BY THE CONTRACTOR AND APPROVAL OF THE LOCATIONS OBTAINED FROM THE ENGINEER PRIOR TO CONSTRUCTION AND INSTALLATION.
- ALL TRAFFIC SIGNAL WORK SHALL CONFORM TO THE REQUIREMENTS OF THE "MANUAL ON UNIFORM TRAFFIC CONTROL DEVICES FOR STREETS AND HIGHWAYS", FEDERAL HIGHWAY ADMINISTRATION (1978) AND AMENDMENTS.
- REMOVAL OF EXISTING SIGNS SHALL ALSO INCLUDE THE REMOVAL OF POSTS AND FOUNDATIONS UNLESS OTHERWISE NOTED. ALL SUCH MATERIALS SHALL BECOME THE PROPERTY OF THE CONTRACTOR. COSTS SHALL BE INCIDENTAL TO OTHER ITEMS OF WORK.
- LOCATIONS OF TRAFFIC MARKINGS AND MARKERS (LANE LINES, STOP LINES, CROSS WALKS, ETC.) SHOWN ON THE PLANS SHALL BE VERIFIED BY THE CONTRACTOR WITH THE ENGINEER PRIOR TO THE INSTALLATION OF THE TRAFFIC SIGNAL SYSTEM.
- REMOVAL OF PAVEMENT MARKINGS AND STRIPINGS SHALL BE DONE BY THE CONTRACTOR.
- A SOLID # 8 BARE COPPER WIRE SHALL BE PULLED WITH THE TRAFFIC SIGNAL CONTROL CABLE FOR EQUIPMENT GROUND. COST SHALL BE INCIDENTAL TO THE INSTALLATION OF THE CONTROL CABLE.
- STOP SIGN OR YIELD SIGN INDICATED TO BE REMOVED SHALL BE REMOVED AFTER THE TRAFFIC SIGNAL SYSTEM IS OPERATIONAL.
- MAINTENANCE OF TRAFFIC THROUGH THE CONSTRUCTION AREA SHALL BE IN ACCORDANCE WITH PART VII OF THE "MANUAL ON UNIFORM TRAFFIC CONTROL DEVICES FOR STREETS AND HIGHWAYS", FEDERAL HIGHWAY ADMINISTRATION (1978). THE CONTRACTOR SHALL FURNISH AND MAINTAIN ADEQUATE BARRICADES, BLINKERS, CONSTRUCTION SIGNS, ETC. FOR THE SAFETY OF THE MOTORING PUBLIC.



TRAFFIC CONTROL PLAN



THIS WORK WAS PREPARED BY ME
OR UNDER MY SUPERVISION
Theodore S. Kawahigashi
Signature

STATE OF HAWAII
DEPARTMENT OF TRANSPORTATION

AHUKINI ROAD AND KUHIO
HIGHWAY IMPROVEMENTS
FED. AID PROJECT NO. R56-0570(2)

TYPICAL SECTIONS
AND NOTES

SCALE: AS SHOWN DATE: 5-6-80
SHEET NO. 1 OF 1 SHEETS

SURVEY PLOTTED BY	DATE
DRAWN BY	
TRACED BY	
QUANTITIES BY	
CHECKED BY	
ORIGINAL PLAN	
NOTE BOOK	
No.	