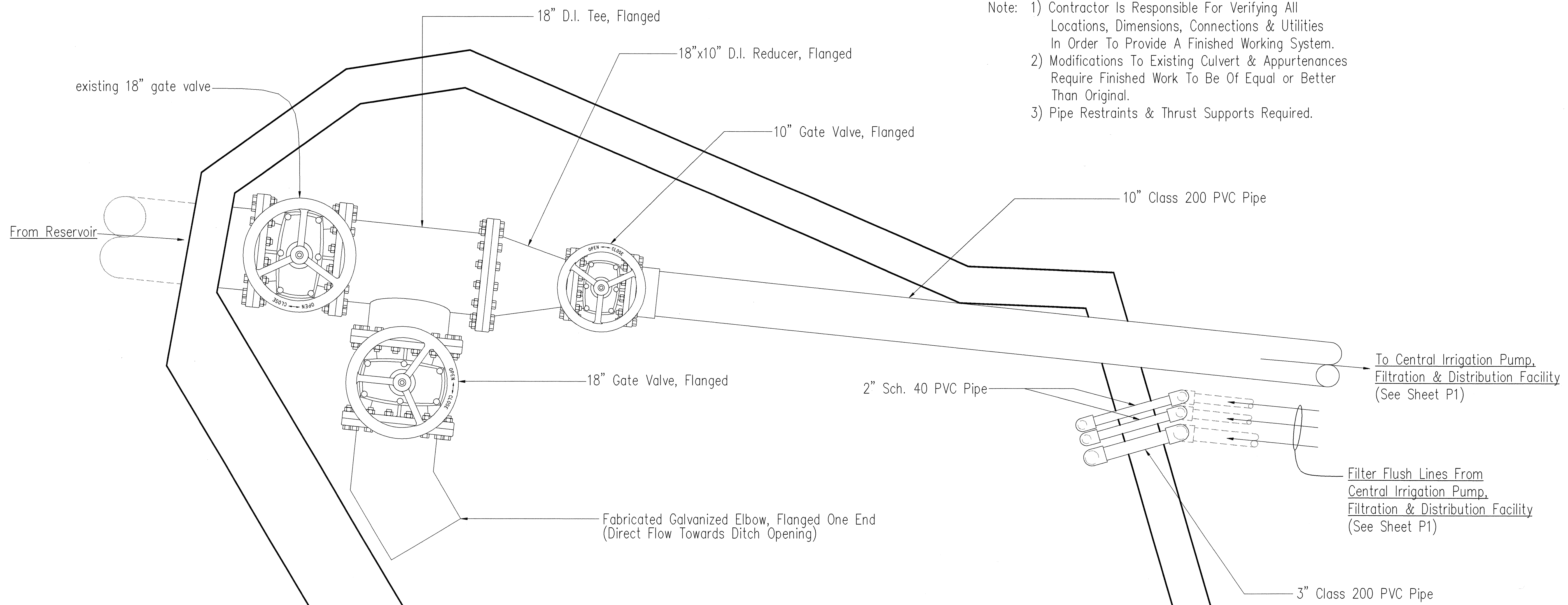


FED. ROAD DIST. NO.	STATE	FED. AID PROJ. NO.	FISCAL YEAR	SHEET NO.	TOTAL SHEETS
HAWAII	HAW.	STP-0700(43)	1998	40	141



- Note: 1) Contractor Is Responsible For Verifying All Locations, Dimensions, Connections & Utilities In Order To Provide A Finished Working System.
 2) Modifications To Existing Culvert & Appurtenances Require Finished Work To Be Of Equal or Better Than Original.
 3) Pipe Restraints & Thrust Supports Required.

PLAN VIEW
NTS

ORIGINAL PLAN	SURVEY PLOTTED BY	DATE
NOTE BOOK	DRAWN BY	
No.	DESIGNED BY	
	CHECKED BY	

YOSHIAKI TANABE
REGISTERED PROFESSIONAL ENGINEER
No. 6415-M
HAWAII, U.S.A.

THIS WORK WAS PREPARED BY ME OR UNDER MY SUPERVISION

[Signature]

STATE OF HAWAII
DEPARTMENT OF TRANSPORTATION
HIGHWAYS DIVISION

RESERVOIR CONNECTION DETAILS

LIHUE GATEWAY LANDSCAPE BEAUTIFICATION PROJECT

SCALE: NTS DATE: July 31, 1998

SHEET No. R1 OF 1 SHEETS