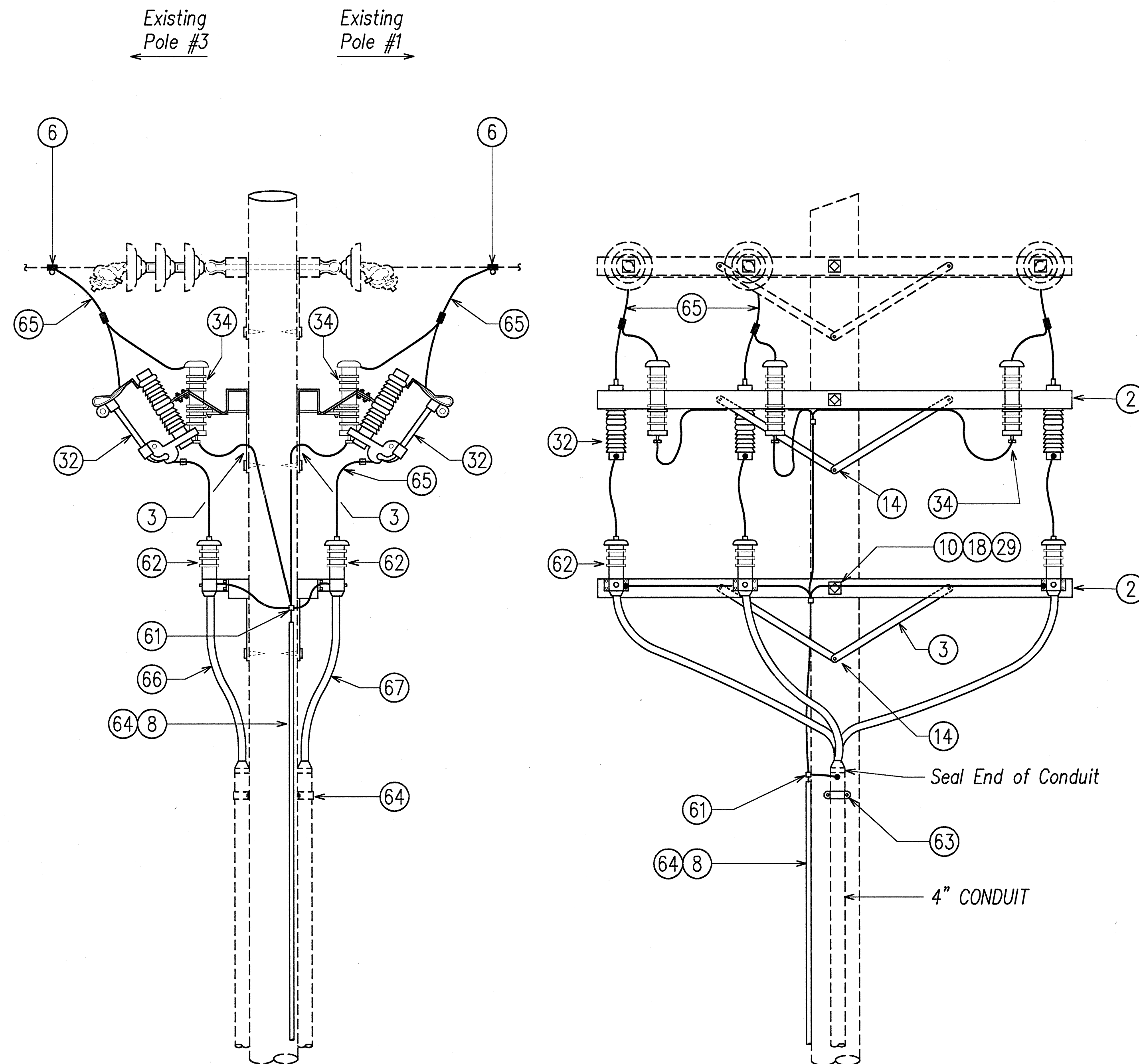
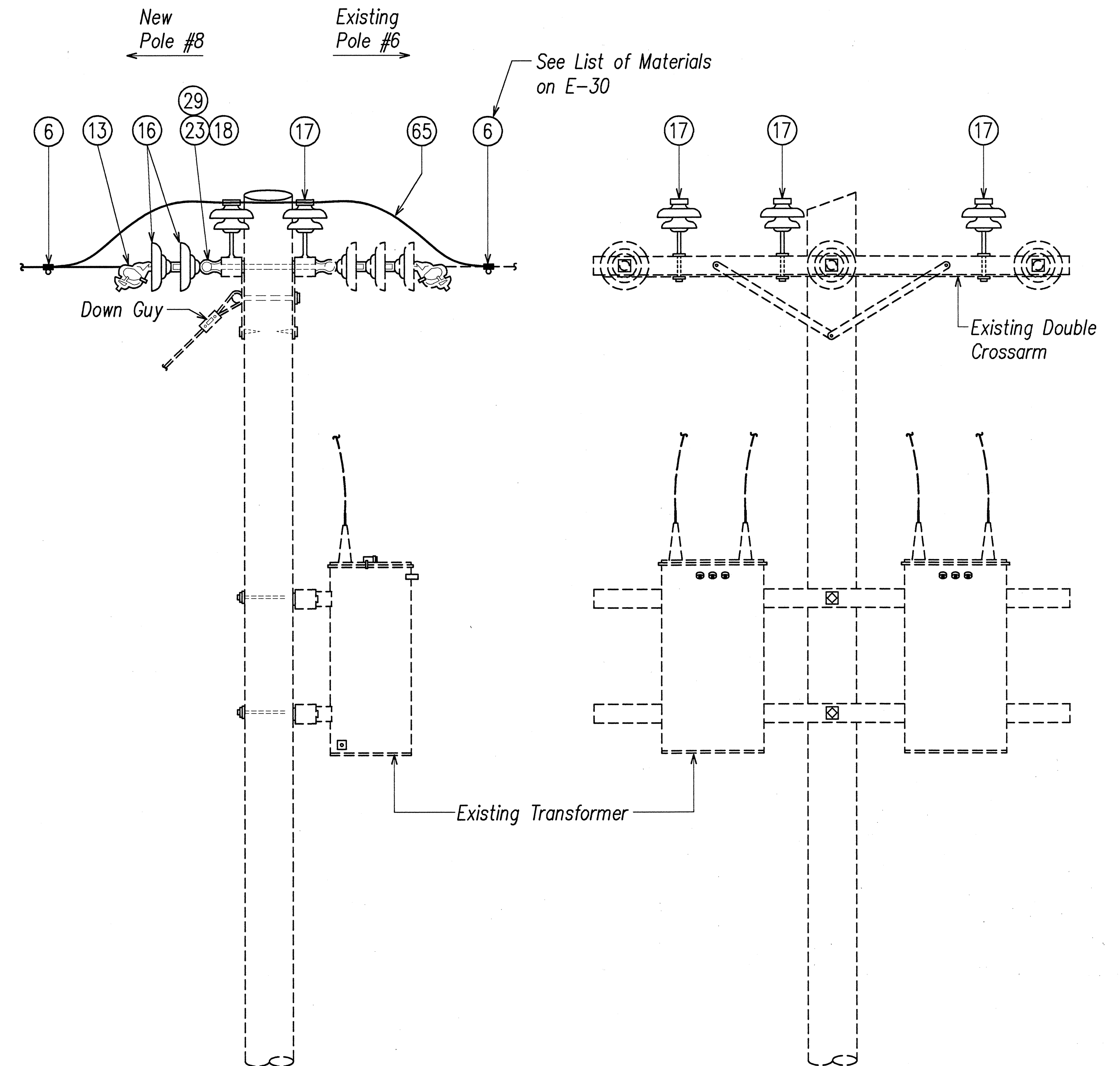


FED. ROAD DIST. NO.	STATE	FED. AID PROJ. NO.	FISCAL YEAR	SHEET NO.	TOTAL SHEETS
HAWAII	HAW.	STP-0700 (43)	1998	139	141



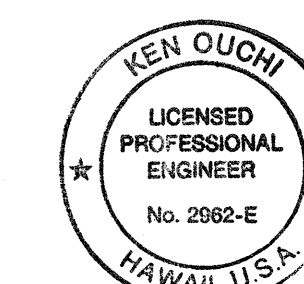
A EXIST POLE #2
E-28 Not to Scale



B EXIST POLE #7
E-28 Not to Scale

SURVEY PLOTTED BY	DATE
DRAWN BY	
DESIGNED BY	
QUANTITIES BY	
CHECKED BY	
ORIGINAL PLAN	
NOTE BOOK	
No.	

DATE: 10/15/98 11:25 AM BY: K. OUCHI
PROJECT: LIHUE GATEWAY LANDSCAPE BEAUTIFICATION



K. Ouchi
THIS WORK WAS PREPARED BY
ME OR UNDER MY SUPERVISION.

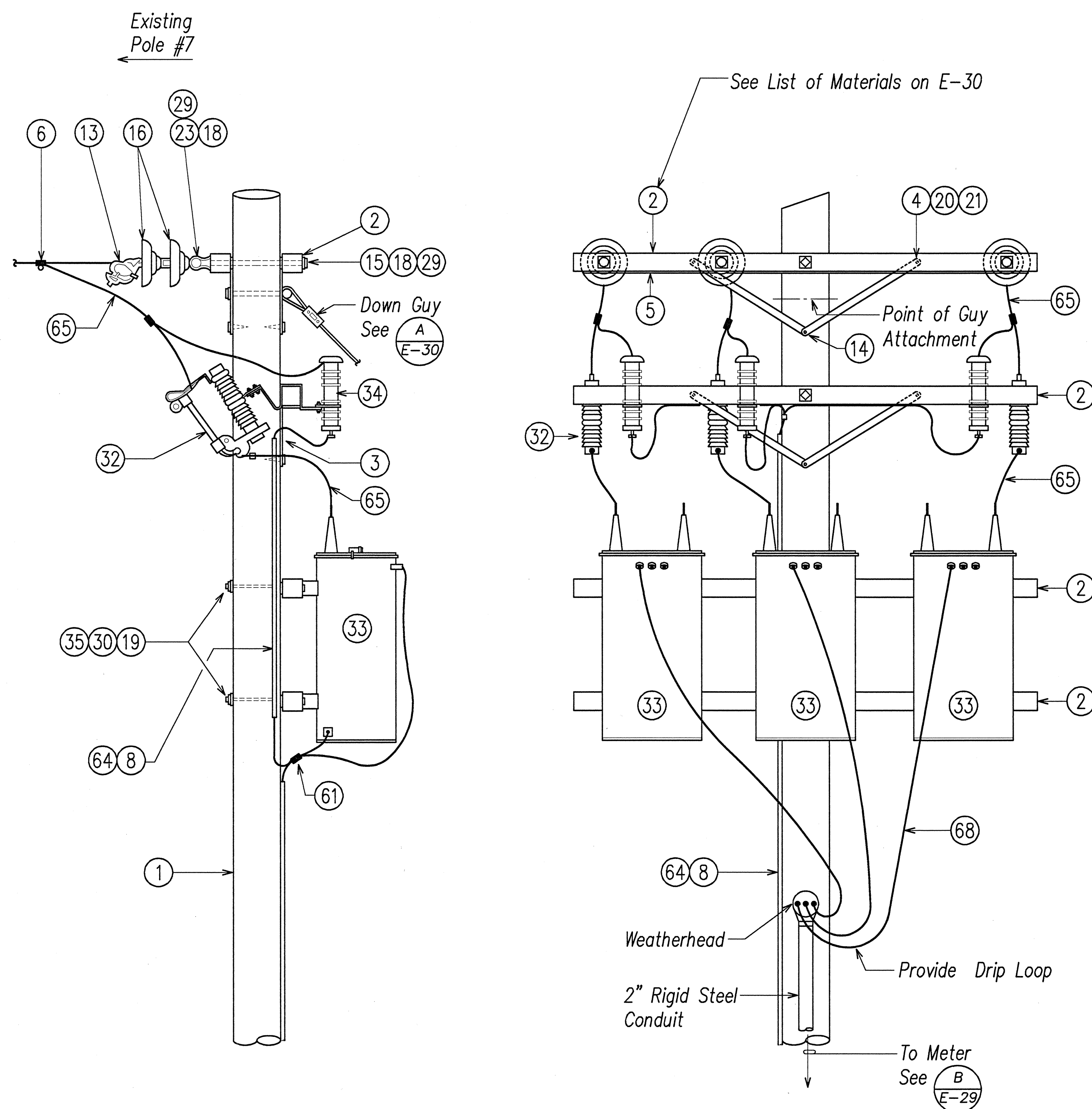
STATE OF HAWAII
DEPARTMENT OF TRANSPORTATION
HIGHWAYS DIVISION
POLE DETAILS

LIHUE GATEWAY LANDSCAPE
BEAUTIFICATION PROJECT

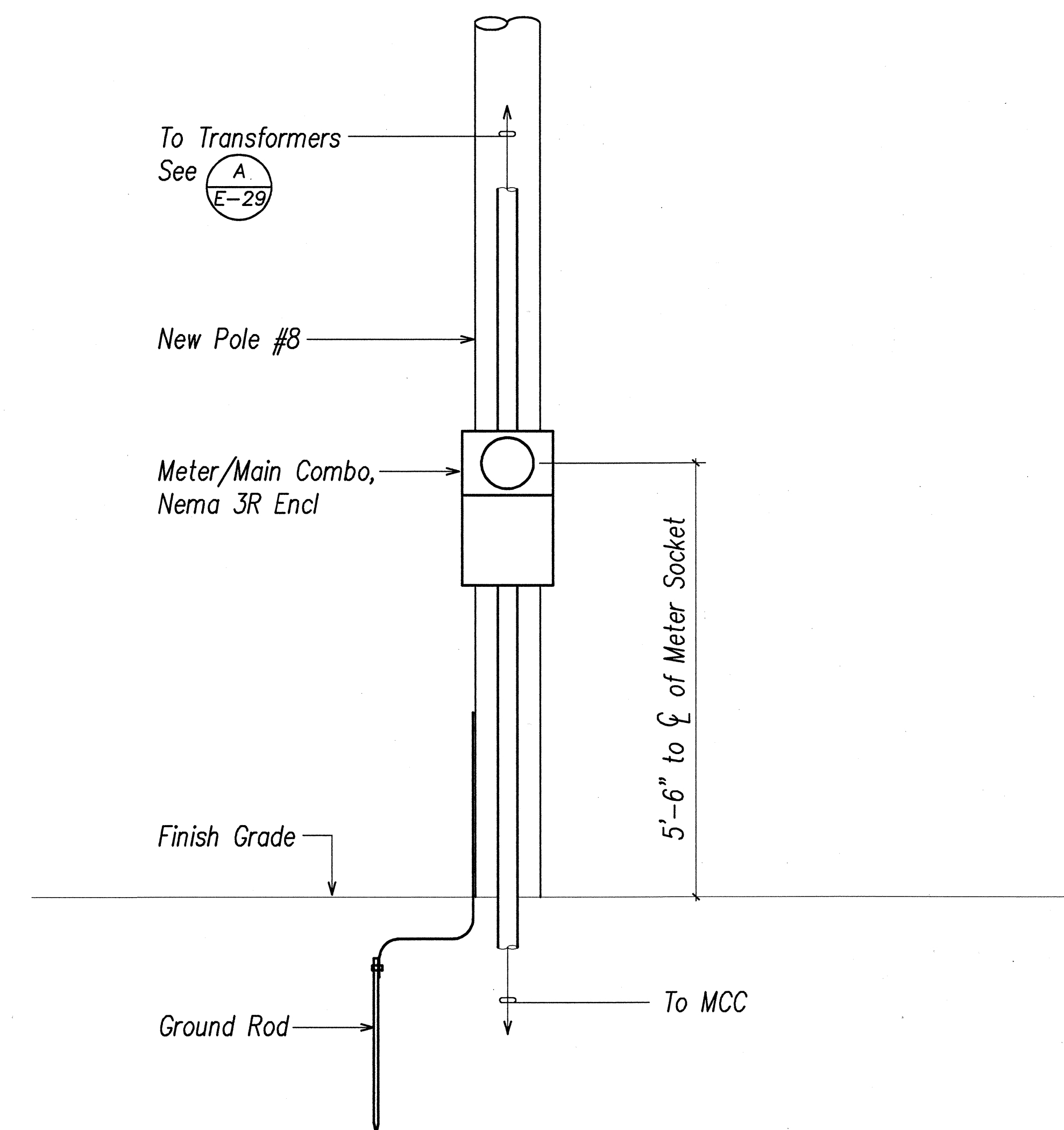
Scale: AS NOTED Date: OCTOBER 1998

SHEET No. E-28 OF 30 SHEETS

FED. ROAD DIST. NO.	STATE	FED. AID PROJ. NO.	FISCAL YEAR	SHEET NO.	TOTAL SHEETS
HAWAII	HAW.	STP-0700 (43)	1998	140	141



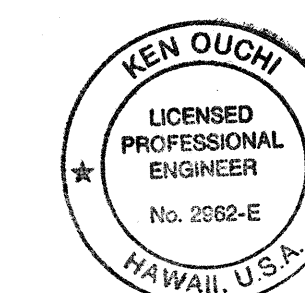
A NEW POLE #8
E-29 Not to Scale



B METERING EQUIPMENT ELEVATION
E-29 Not to Scale

DATE	_____
SURVEY PLOTTED BY	_____
DRAWN BY	_____
DESIGNED BY	_____
QUANTITIES BY	_____
CHECKED BY	_____
ORIGINAL PLAN	_____
NOTE BOOK	_____
No.	_____

LAST SAVE: 10/12/98 @ 11:30:11 BY: K. OUCHI
K:\PROJECTS\1998\140\140.DWG



K. Ouchi
THIS WORK WAS PREPARED BY
ME OR UNDER MY SUPERVISION.

STATE OF HAWAII
DEPARTMENT OF TRANSPORTATION
HIGHWAYS DIVISION
POLE DETAILS

LIHUE GATEWAY LANDSCAPE
BEAUTIFICATION PROJECT

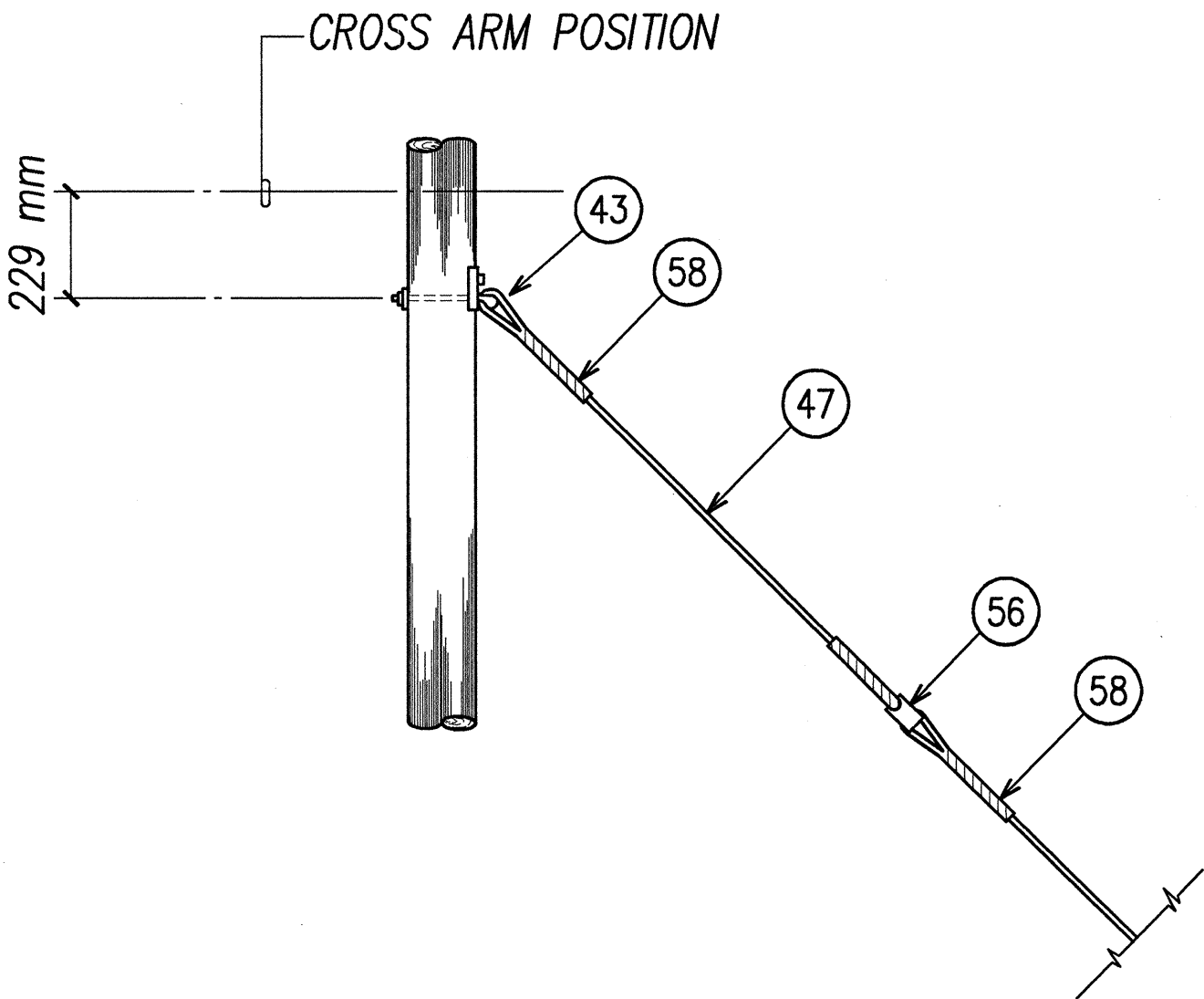
Scale: AS NOTED

Date: OCTOBER 1998

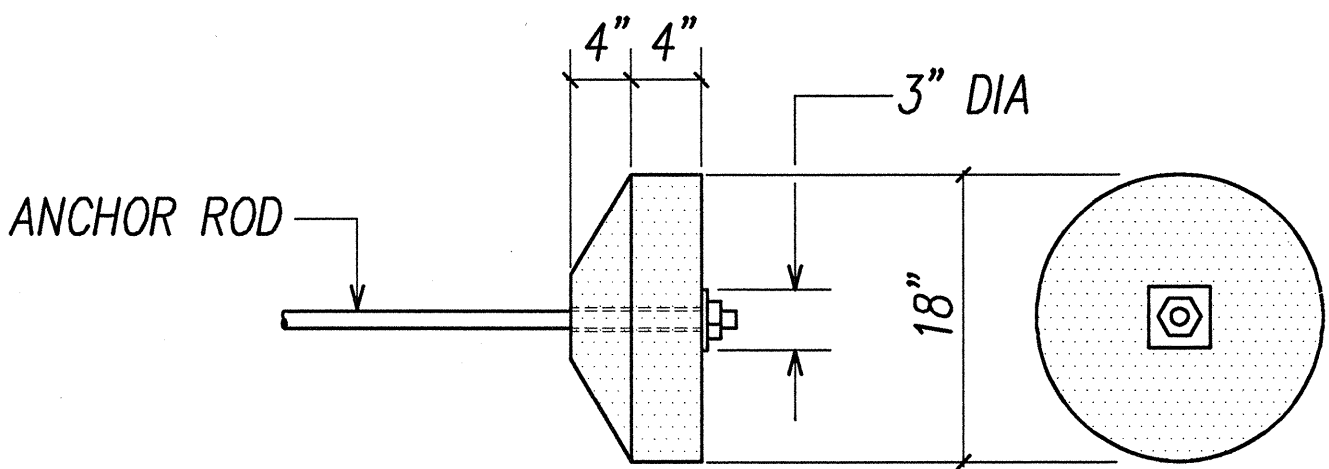
SHEET No. E-29 OF 30 SHEETS

FED. ROAD DIST. NO.	STATE	FED. AID PROJ. NO.	FISCAL YEAR	SHEET NO.	TOTAL SHEETS
HAWAII	HAW.	STP-0700 (43)	1998	141	141

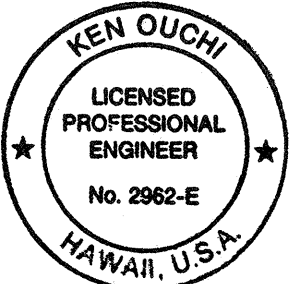
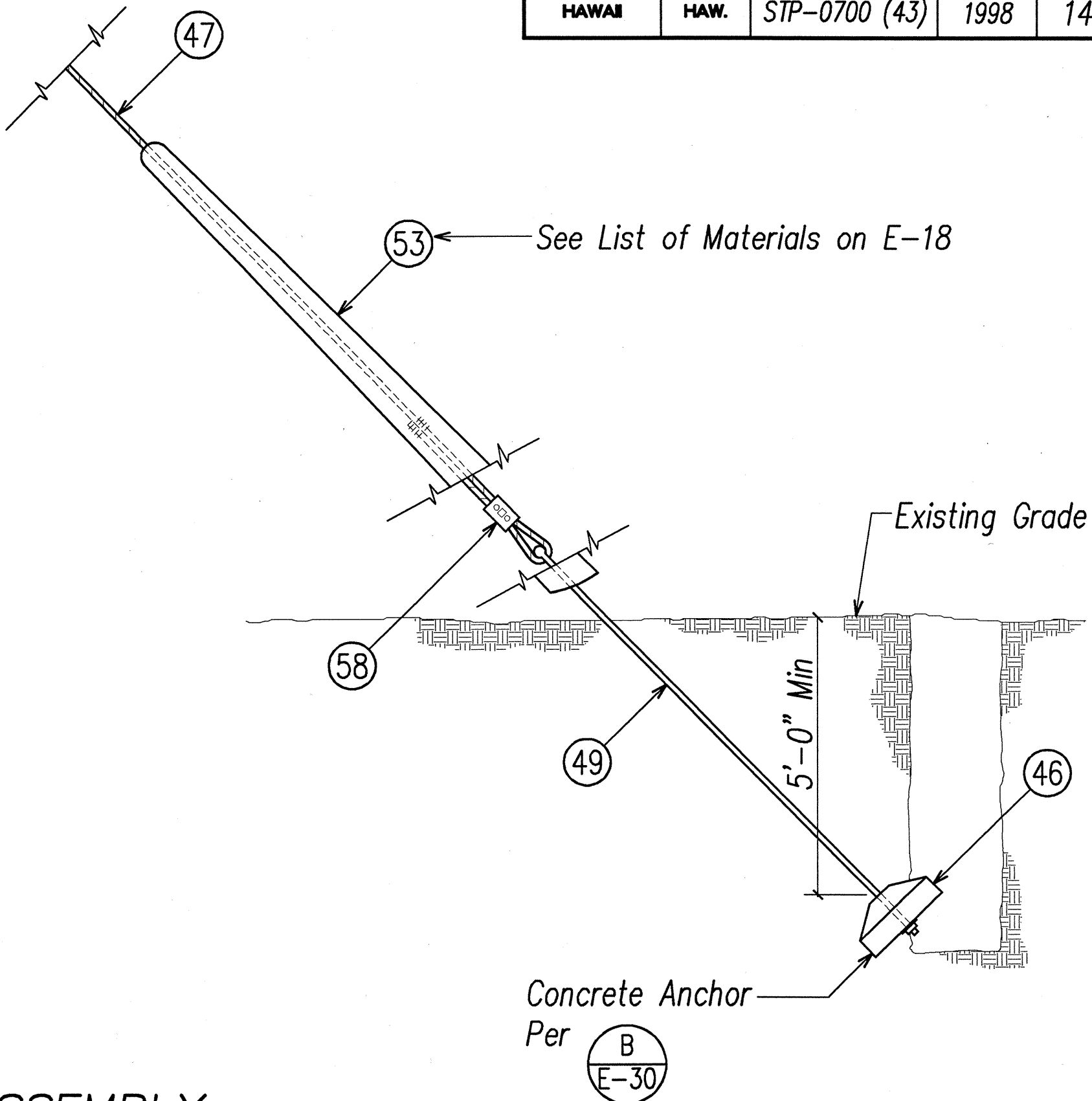
LIST OF MATERIALS	
PART NO.	DESCRIPTION
1	Wood Pole, Class III, 40'-0" Unless Otherwise Indicated
2	Crossarm, Douglas Fir, 3 1/2" x 4 1/2" x 8'-0".
3	Brace, Flat Crossarm, 1 1/4" x 1/4 " x 34" Structural Grade Steel, 10,000 lbs. Breaking Strength.
4	Carriage Bolt, 3/8" x 4 1/2". EEI Spec Td-1.
5	#8 MHD Copper, Bond to Insulator Pins or Bolts.
6	Clamp, Hot Line Tap Assembly
7	Insulator Pin, Forged Stl High Tension.
8	#4 Soft Drawn Copper Ground Wire.
10	Machine Bolt, 5/8" x 14"
12	Machine Bolt, 5/8" x 18"
13	Strain Clamp, Envelope Type, Ultimate Strength 8,000 lbs.
14	Lag Screw, 1 /2" x 4", Fetter Drive
15	Double Arming Bolt 5/8" x 18" with 4 Nuts
16	Suspension Insulator, 10" Dia. Clevis Type, EEI-Nema Class 52-2
17	Pin Type Insulator, 1 3/8" Dia. Pinhole, EEI-Nema Class 55-5
18	Square Washer, 2 1/4" x 2 1/4" x 3/16" , 11/16" Dia. Hole
19	Square Washer, 2 1/4" x 2 1/4" x 3/16" , 3/16" Dia. Hole
20	Round Washer, 1" Dia. 7 /16" Dia. Hole
21	Round Washer, 1 1/4" Dia., 9/16" Dia. Hole, use under Head of Carriage Bolt.
23	Eyenu, 5/8" Bolt Size
29	M-F Locknut, Square 5/8" Bolt Size
30	M-F Locknut, Square 3/4" Bolt Size
32	Fuse Cutout, Open Type. Current Ratings per Diagram on E-23.
33	Transformer, Oil Filled, See Specs
34	Surge Arrester, Zinc Oxide, 9KV
35	Machine Bolt, 3/4" x 10"
36	Shackle, Ultimate Strength - 18,000 Lbs.
37	Extension Link, 1 3/4" x 3/8" x 24"
43	Thimbleye Bolt, 5/8" x 10"
44	Lag Screw, 1/2" x 4" (Fetter Drive)
45	Washers, Square, 2 1/4" x 2 1/4" x 3/16", 11/16 " Dia. Hole
46	Concrete Anchor
47	Galvanized Guy Wire, 7 Strand Utilities, Grade, 7/16" Size.
49	Anchor Rod, Threaded Thimbleye 5/8" x 8'-0", Twineye 3/4" x 8'-0"
52	Square M-F Locknut, for 5/8" Dia. Bolt
53	Guy Protector, 8 Feet, 16 Gage Steel
55	Lift Plate, 3-Hole, 1/4" Steel Plate
56	Guy Strain Insulator
58	Formed Wire Guy Grip
61	Connector, Split Bolt, Copper Alloy
62	Terminator, Single Conductor, Slip-on Type, 15KV.
63	Conduit Strap, Two Hole Type
64	Wood Molding, Half Round, Staple Every 12" with Copperclad Staples
65	#4 HD Bare Copper Conductor
66	15KV XLP Cable
67	5KV XLP Cable
68	600V Cable, Weatherproof



A GUY AND ANCHOR ASSEMBLY
E-30 Not to Scale



B CONCRETE ANCHOR
E-30 Not to Scale



K. Ouchi
THIS WORK WAS PREPARED BY
ME OR UNDER MY SUPERVISION.

STATE OF HAWAII
DEPARTMENT OF TRANSPORTATION
HIGHWAYS DIVISION
POLE DETAILS

LIHUE GATEWAY LANDSCAPE
BEAUTIFICATION PROJECT
Scale: AS NOTED Date: OCTOBER 1998
SHEET No. E-30 OF 30 SHEETS

141