

INDEX TO DRAWINGS	
SHEET NO.	DESCRIPTION
1	TITLE SHEET
2	STANDARD PLANS SUMMARY
3	GENERAL NOTES AND LEGEND
4	TYPICAL SECTIONS
5 - 6	ROADWAY PLAN - RICE STREET
7 - 8	ROADWAY PLAN - KUHIO HIGHWAY
9 - 18	ROADWAY PLAN - KUAMOO ROAD
19	SRT-350 SLOTTED RAIL TERMINAL
20	MISCELLANEOUS DETAILS
21	GUARDRAIL INSTALLATION
22 - 24	END CONNECTIONS
25	ET-2000 - OPTION "A"
26	ET-2000 - OPTION "B"
27	QUANTITY SUMMARIES
28	TRAFFIC LEGEND, DETAILS & NOTES
29	TRAFFIC SUMMARIES

STATE OF HAWAII

DEPARTMENT OF TRANSPORTATION

HIGHWAYS DIVISION

HONOLULU, HAWAII

"AS-BUILT"

PLANS FOR

RICE STREET, KUHIO HIGHWAY, AND KUAMOO ROAD

GUARDRAIL AND SHOULDER IMPROVEMENTS

AT VARIOUS LOCATIONS

FEDERAL AID PROJECT NO. STP-0700(38)

DISTRICTS OF LIHUE AND KAWAIHAU

ISLAND OF KAUAI

NOV. 1997

DATE

587-2250

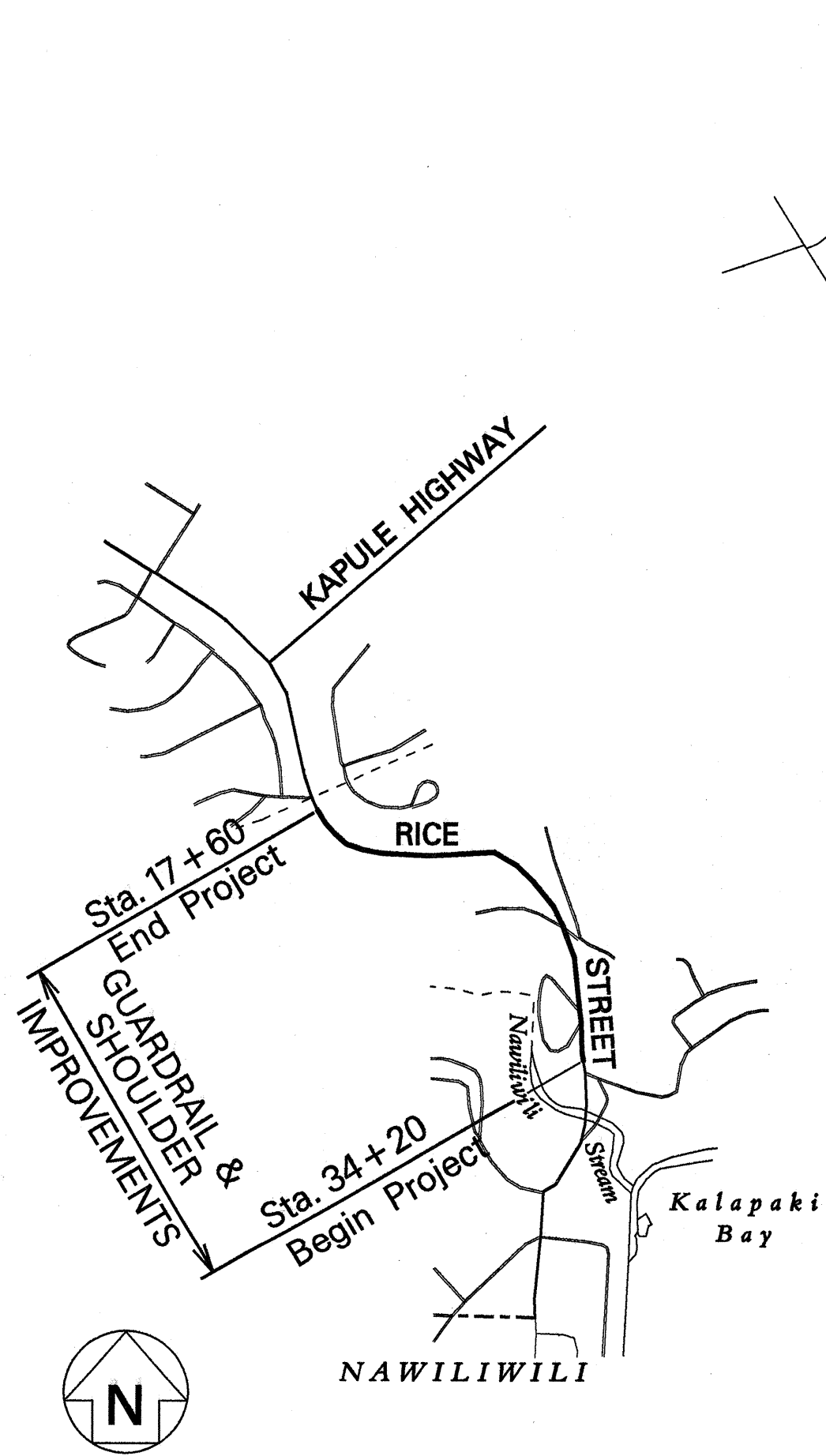
PHONE

R. HIRONAKA

P. S. & E. BY

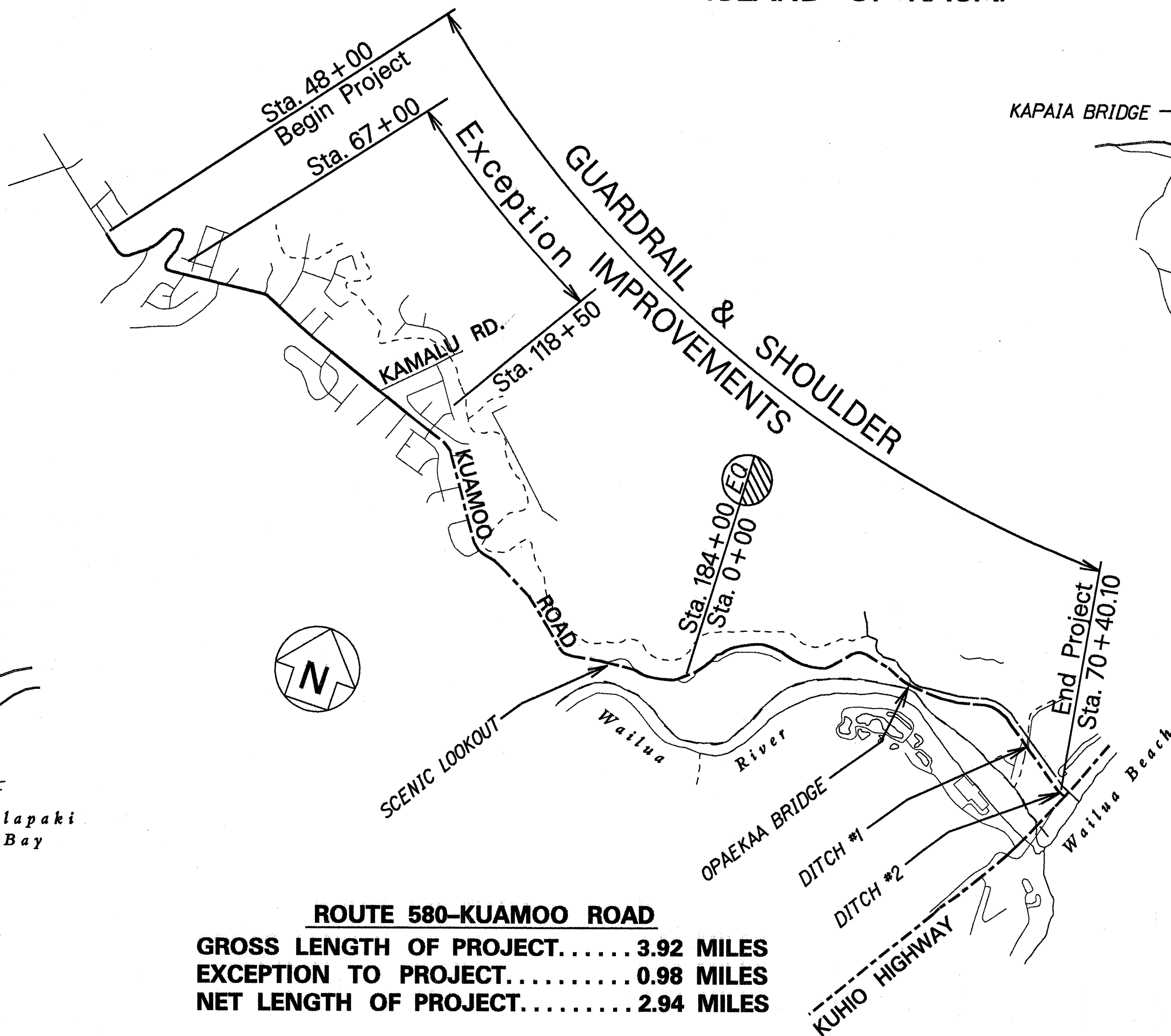
DESIGNED BY

HWY-K



ROUTE 51-RICE STREET

GROSS LENGTH OF PROJECT.....0.32 MILES



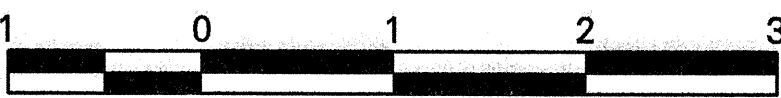
ROUTE 580-KUAMOO ROAD

GROSS LENGTH OF PROJECT.....3.92 MILES

EXCEPTION TO PROJECT.....0.98 MILES

NET LENGTH OF PROJECT.....2.94 MILES

LAYOUT PLAN



SCALE IN THOUSAND FEET

STATE OF HAWAII

DEPARTMENT OF TRANSPORTATION

HIGHWAYS DIVISION

HONOLULU, HAWAII

"AS-BUILT"

PLANS FOR

RICE STREET, KUHIO HIGHWAY, AND KUAMOO ROAD

GUARDRAIL AND SHOULDER IMPROVEMENTS

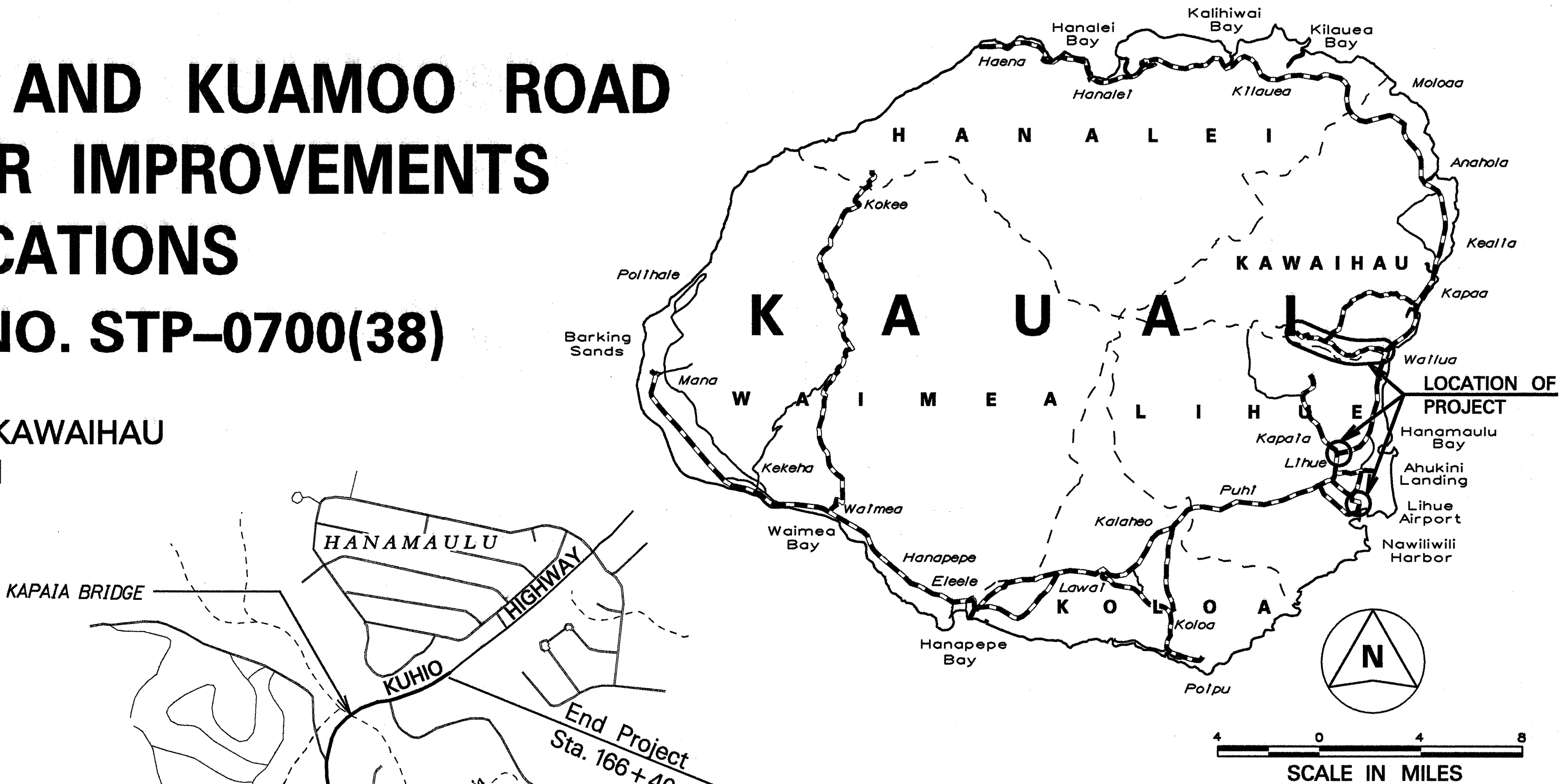
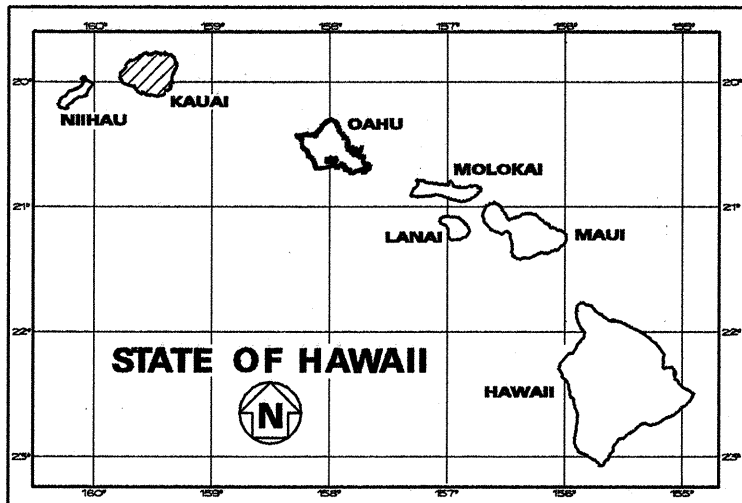
AT VARIOUS LOCATIONS

FEDERAL AID PROJECT NO. STP-0700(38)

DISTRICTS OF LIHUE AND KAWAIHAU

ISLAND OF KAUAI

FED. ROAD DIST. NO.	STATE	FED. AID PROJ. NO.	FISCAL YEAR	SHEET NO.	TOTAL SHEETS
HAWAII	HAW.	STP-0700(38)	1998	1	29



FEDERAL AID PROJECTS PREVIOUSLY CONSTRUCTED OR UNDER CONSTRUCTION

RICE STREET MILE POST 0.36 TO MILE POST 0.68

KUHIO HIGHWAY MILE POST 0.90 TO MILE POST 1.51

KUAMOO ROAD MILE POST 0.00 TO MILE POST 3.92

DESIGN DESIGNATIONS

	RICE STREET	KUHIO HIGHWAY	KUAMOO ROAD BEGIN PROJECT TO KAMALU ROAD	KAMALU ROAD TO SCENIC LOOKOUT	SCENIC LOOKOUT EXIT TO KUHIO HWY
ADT (1997)	13,800	18,100	2,400	7,300	9,100
ADT (2020)	24,200	21,000	4,500	8,100	10,600
DHV	-	-	-	-	-
D	55/45	60/40	55/45	70/30	65/35
T	4.0	2.0	0.5	0.5	0.5
T 24	6.0	3.0	2.0	2.0	2.0

CHANGES MADE DURING CONSTRUCTION HAVE BEEN INCORPORATED ON THESE PLANS EXCEPT CHANGES IN THE ORIGINAL THEORETICAL QUANTITIES. FOR ACTUAL QUANTITIES, REFER TO PROJECT LEDGER AND/OR COMPUTATION BOOK.

4/15/99

DEPARTMENT OF TRANSPORTATION

STATE OF HAWAII

APPROVED:

11/28/97

DATE