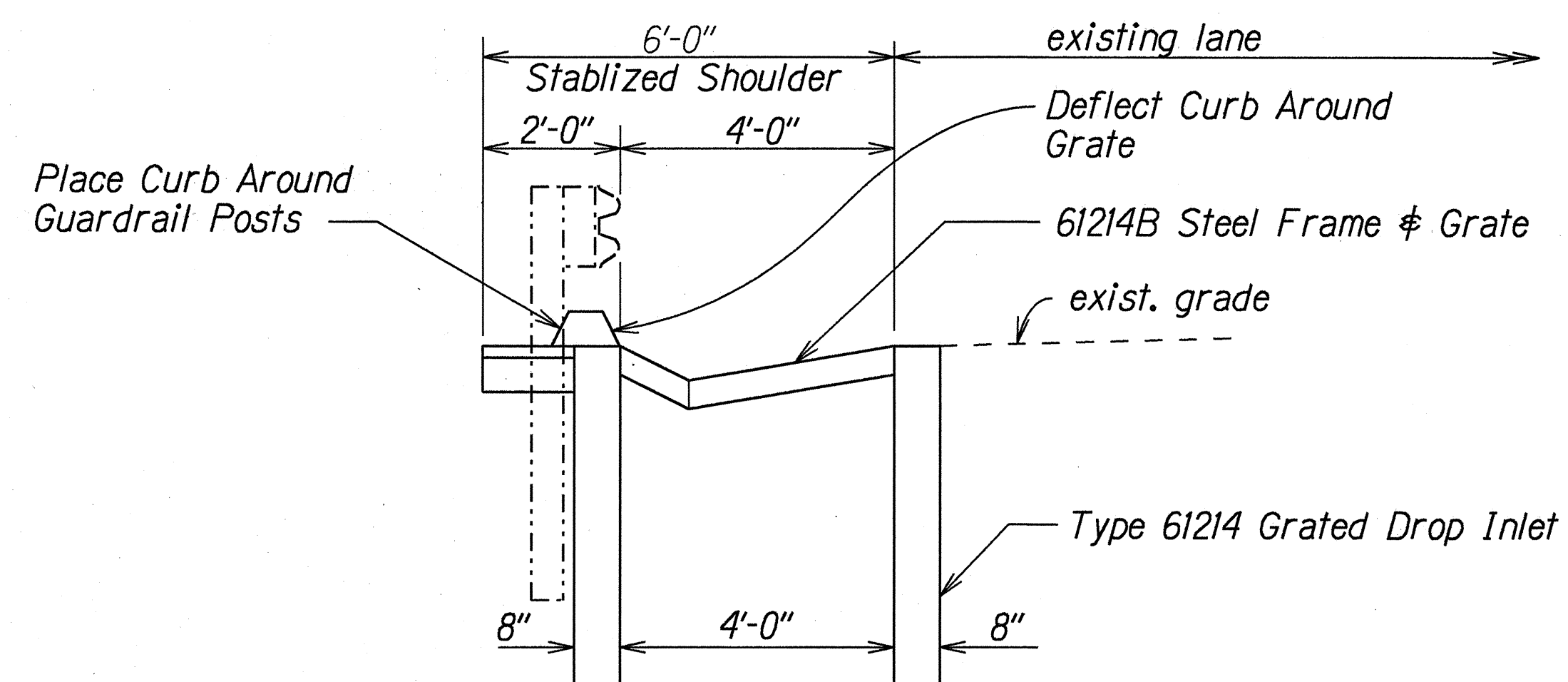
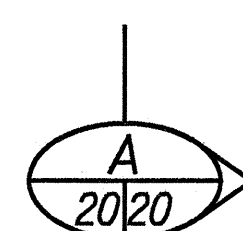
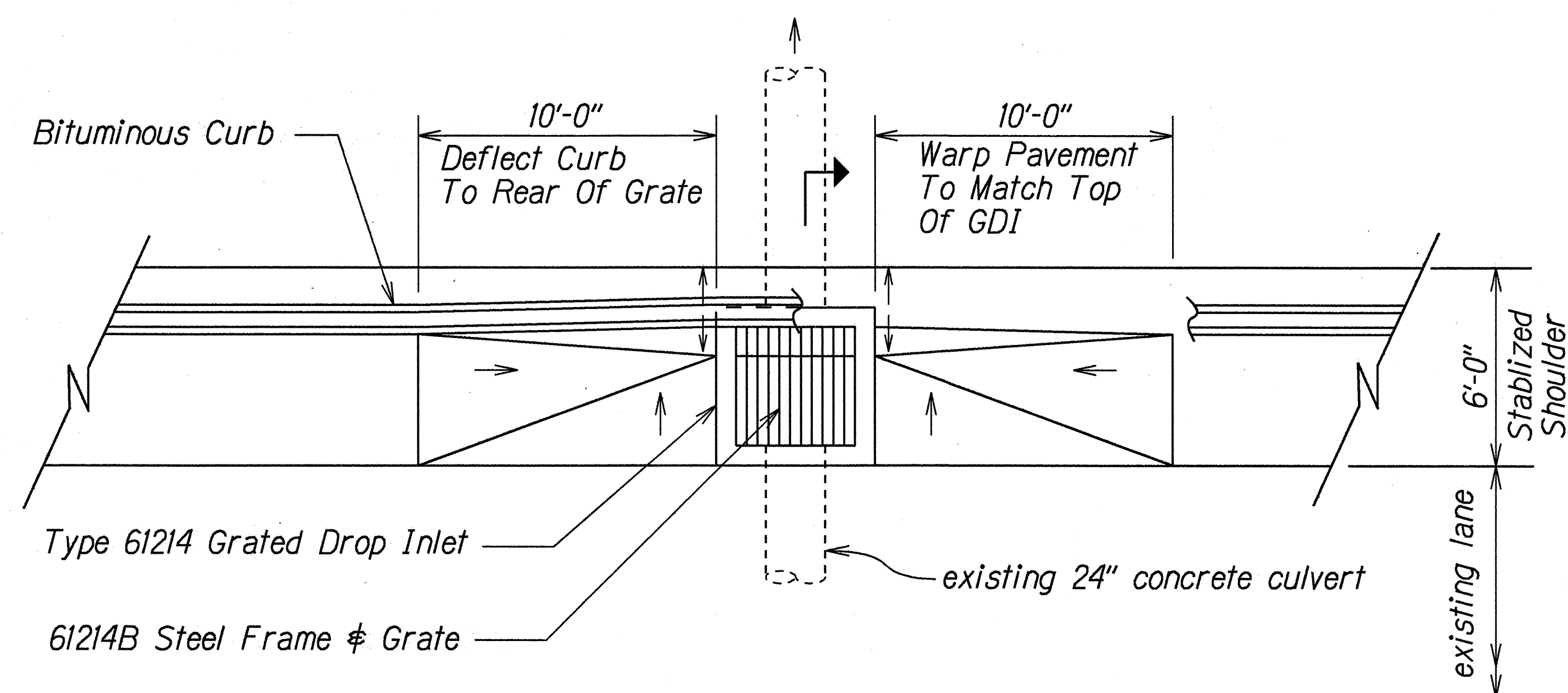


FED. ROAD DIST. NO.	STATE	FED. AID PROJ. NO.	FISCAL YEAR	SHEET NO.	TOTAL SHEETS
HAWAII	HAW.	STP-0700(38)	1998	20	29

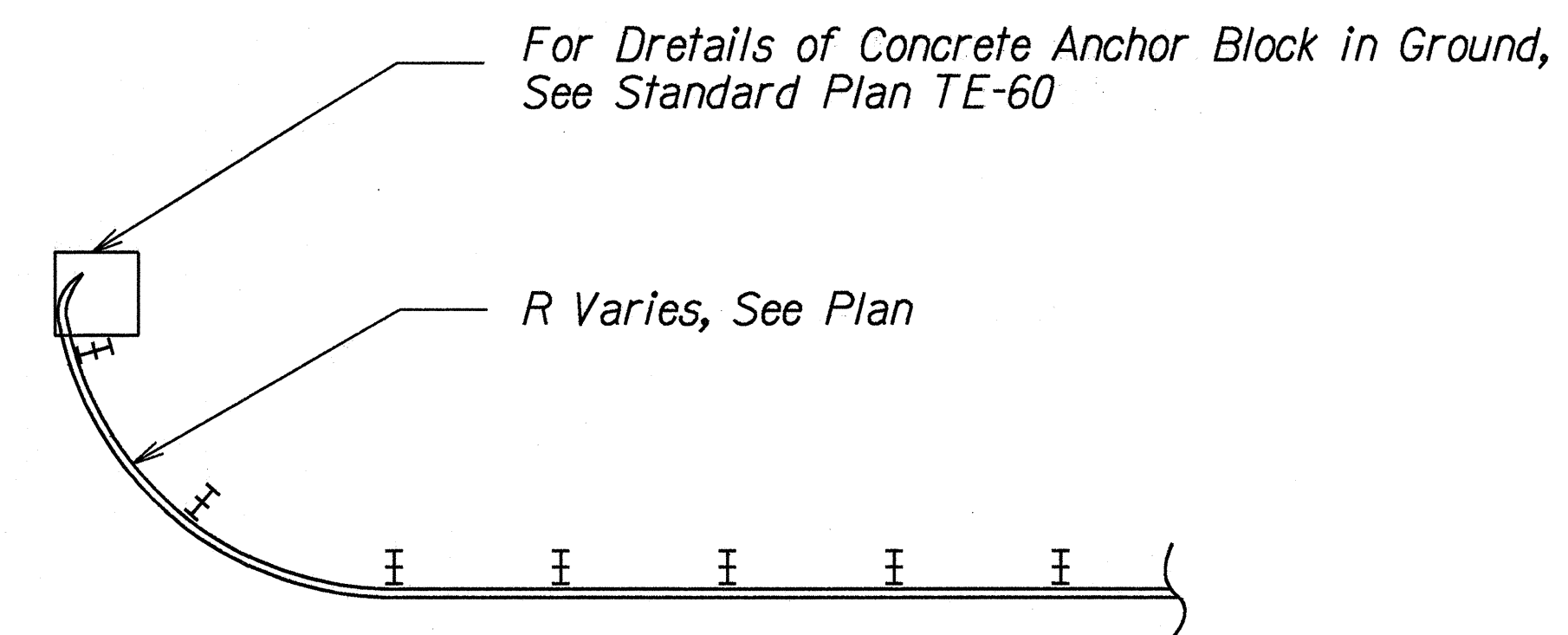


SECTION
Scale: 1/2" = 1'-0"

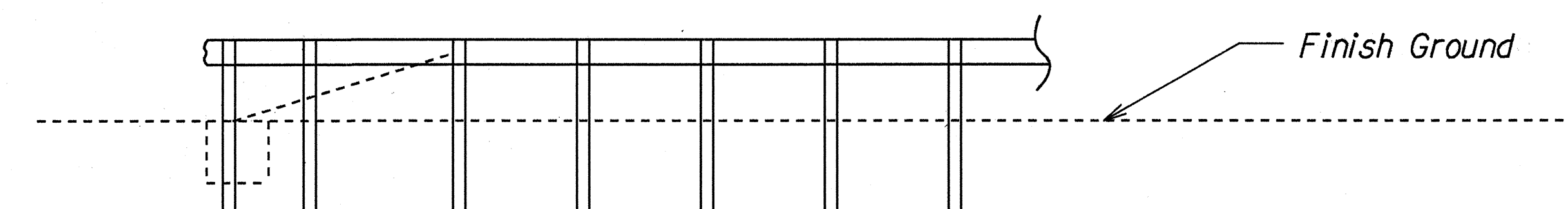


PLAN
Scale: 1/4" = 1'-0"

TYPE 61214 GRATED DROP INLET
RICE STREET
@ STA. 23+50± (o/s Lt.)



PLAN
Not To Scale



ELEVATION
Not To Scale

NOTE:
See Standard Plan TE-59
For Details of Standard Type "G" Not Shown.

MODIFIED TYPE "G" FLARE

ORIGINAL PLAN	DATE	10/95
SURVEY PLOTTED BY		
DRAWN BY	J. Hurlbird	
DESIGNED BY	J. Hurlbird	
CHECKED BY		
NOTED BY		
APPROVED BY		

STATE OF HAWAII DEPARTMENT OF TRANSPORTATION HIGHWAYS DIVISION
MISCELLANEOUS DETAILS
RICE STREET, KUHIO HIGHWAY AND KUAMOO ROAD
GUARDRAIL AND SHOULDER IMPROVEMENTS
AT VARIOUS LOCATIONS
FEDERAL AID PROJECT NO. STP-0700(38)
Scale: As Shown Date: Sept, 1996
SHEET No. 1 OF 1 SHEETS