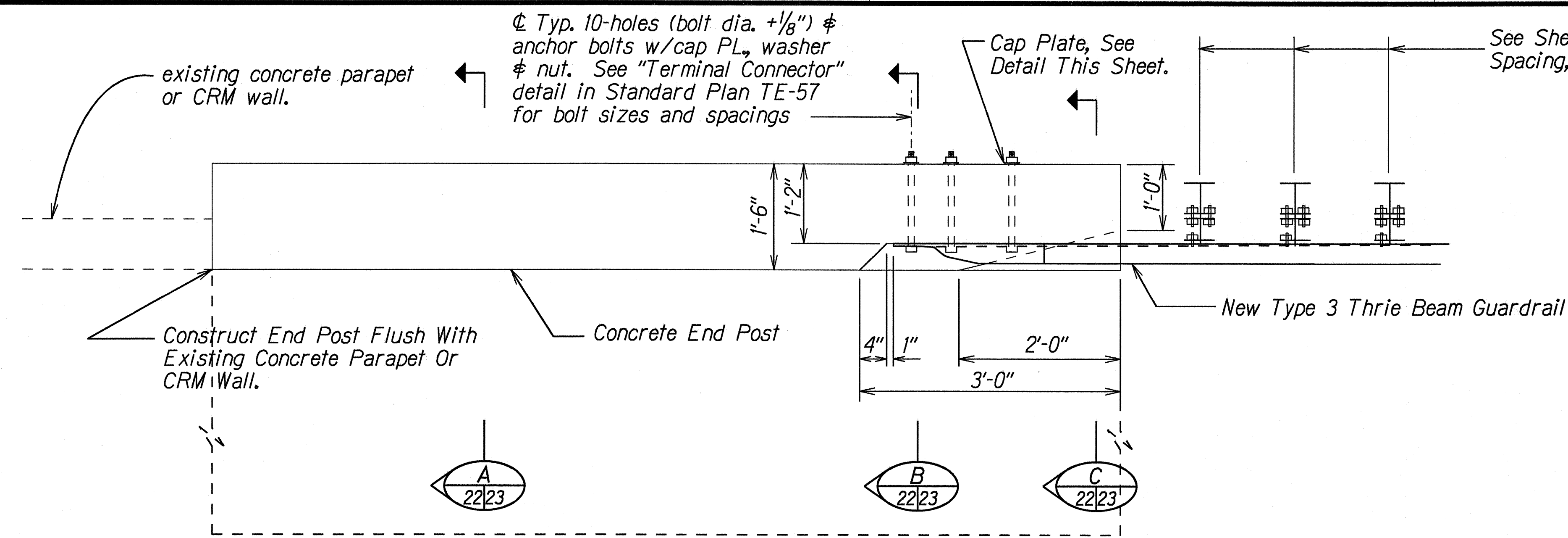
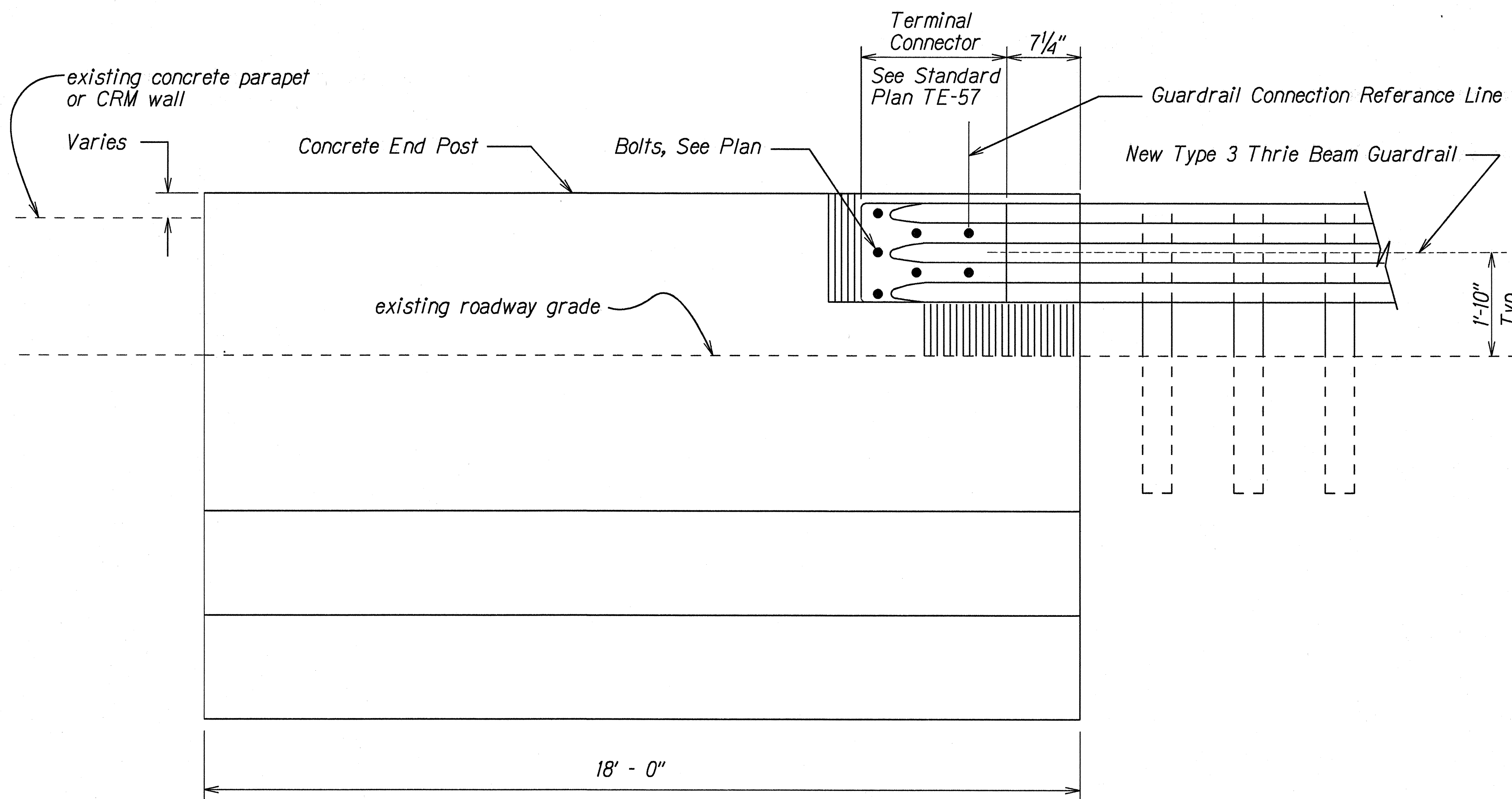


FED. ROAD DIST. NO.	STATE	FED. AID PROJ. NO.	FISCAL YEAR	SHEET NO.	TOTAL SHEETS
HAWAII	HAW.	STP-0700(38)	1998	22	29



PLAN
Scale: 3/4" = 1'-0"

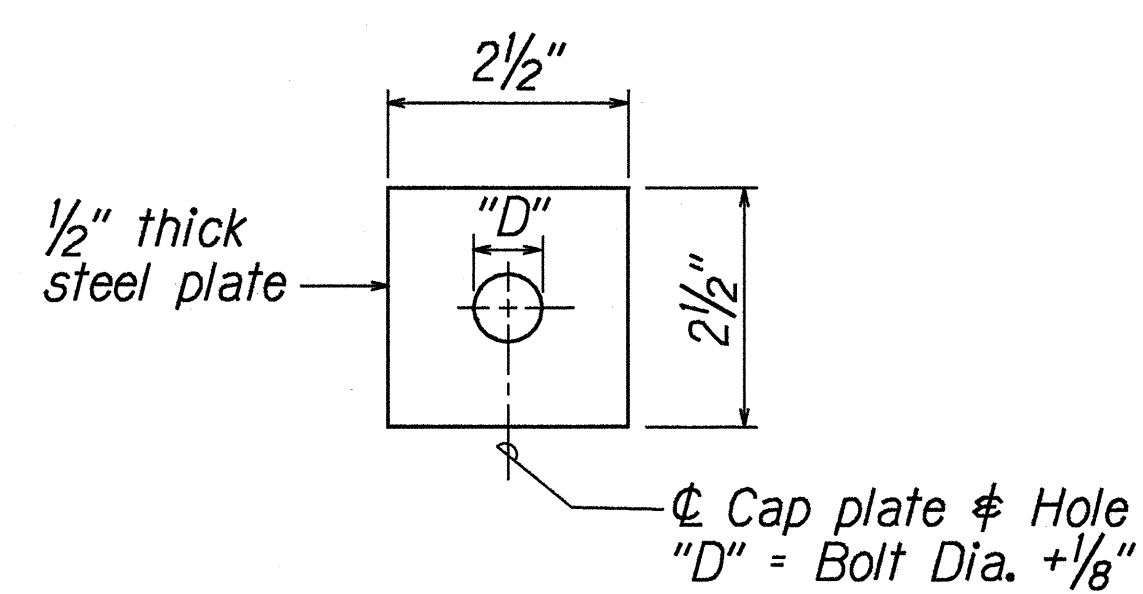


ELEVATION
Scale: 3/4" = 1'-0"

CONCRETE END POST & TYPE 3 THRIE BEAM CONNECTION

NOTES

- See plan for location of connections.
- All anchor bolts shall be high strength bolts conforming to requirements of ASTM A-325.
- "Terminal Connector" shall be fabricated from 10 gauge steel conforming to the requirement of AASHTO M 180.
- Anchor bolt length shall be such that a snug fit of the elements and full thread engagement plus 1/4" is attained.
- Terminal Connector and standard spacer, including all anchor bolts, cap plate, nuts and washers, shall be hot-dip galvanized after fabrication.
- The contractor shall be solely responsible for the protection of utilities and existing and new structures from damages due to construction. Any damage shall be repaired at the Contractor's expense to the satisfaction of the Engineer.
- Construction of the new End Post, including excavation and backfill, shall be paid for under 507.7501 - CONCRETE END POST.
- AC pavement and Aggregate Base on top of footing shall be paid for under 304.1110 - AGGREGATE BASE and 401.0400 ASPHALT CONCRETE PAVEMENT MIX NO. IV
- Connection of guardrail to end post shall be paid for under 606.9000 - CONNECT GUARDRAIL TO BRIDGE PARAPET OR CONCRETE END POST.
- CONCRETE $f'_c = 3000$ psi
REBAR $f_s = 40$ ksi

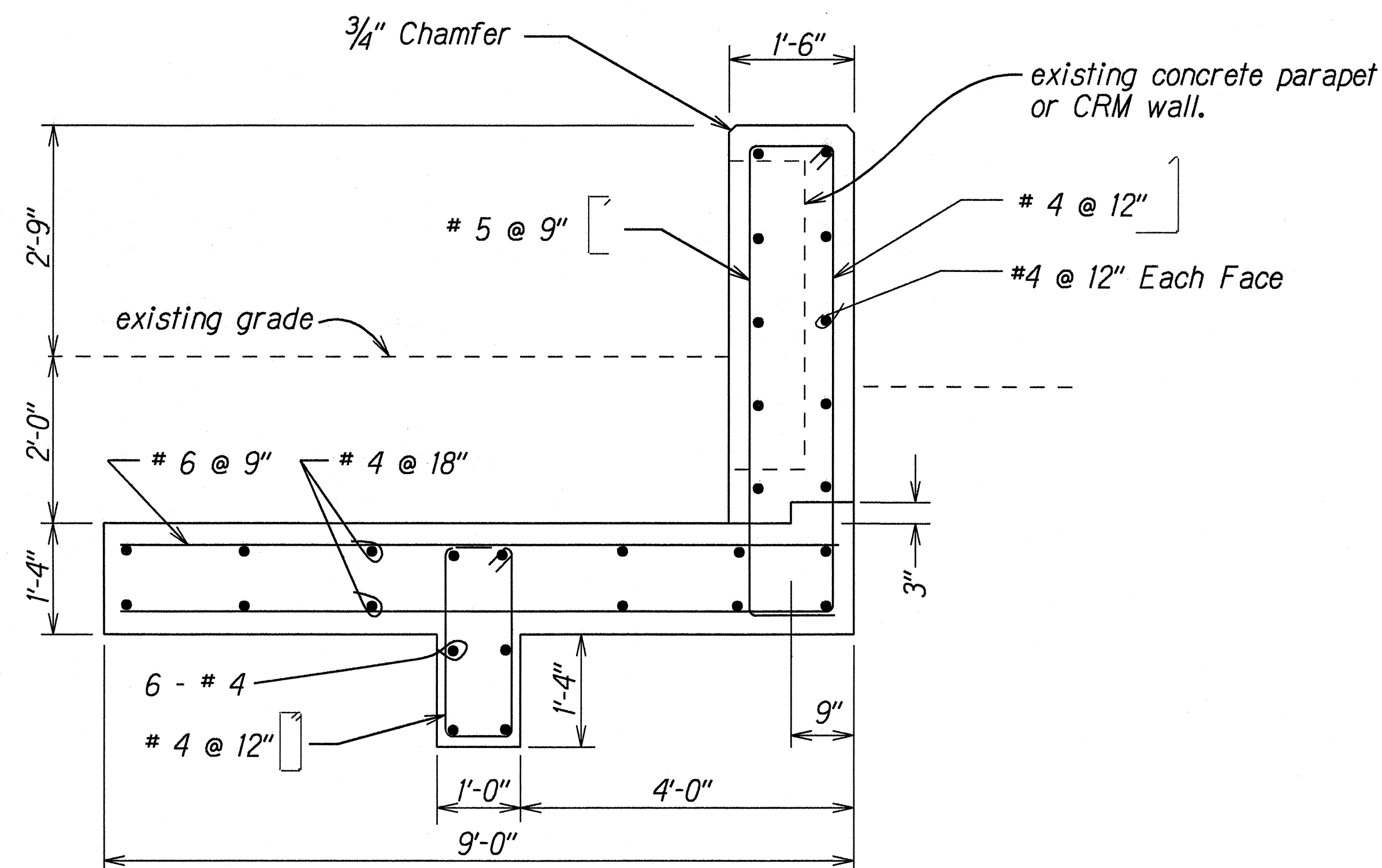


CAP PLATE DETAIL
Half Scale

DESIGNED BY	DATE
DRAWN BY	9/96
CHECKED BY	
NOTED BY	
QUANTITIES BY	
CHECKED BY	

STATE OF HAWAII
DEPARTMENT OF TRANSPORTATION
HIGHWAYS DIVISION
END CONNECTIONS
RICE STREET, KUHIO HIGHWAY
AND KUAMOO ROAD
GUARDRAIL AND SHOULDER IMPROVEMENTS
AT VARIOUS LOCATIONS
FEDERAL AID PROJECT NO. STP-0700(38)
Scale: As Shown Date: Sept, 1996
SHEET No. 1 OF 3 SHEETS

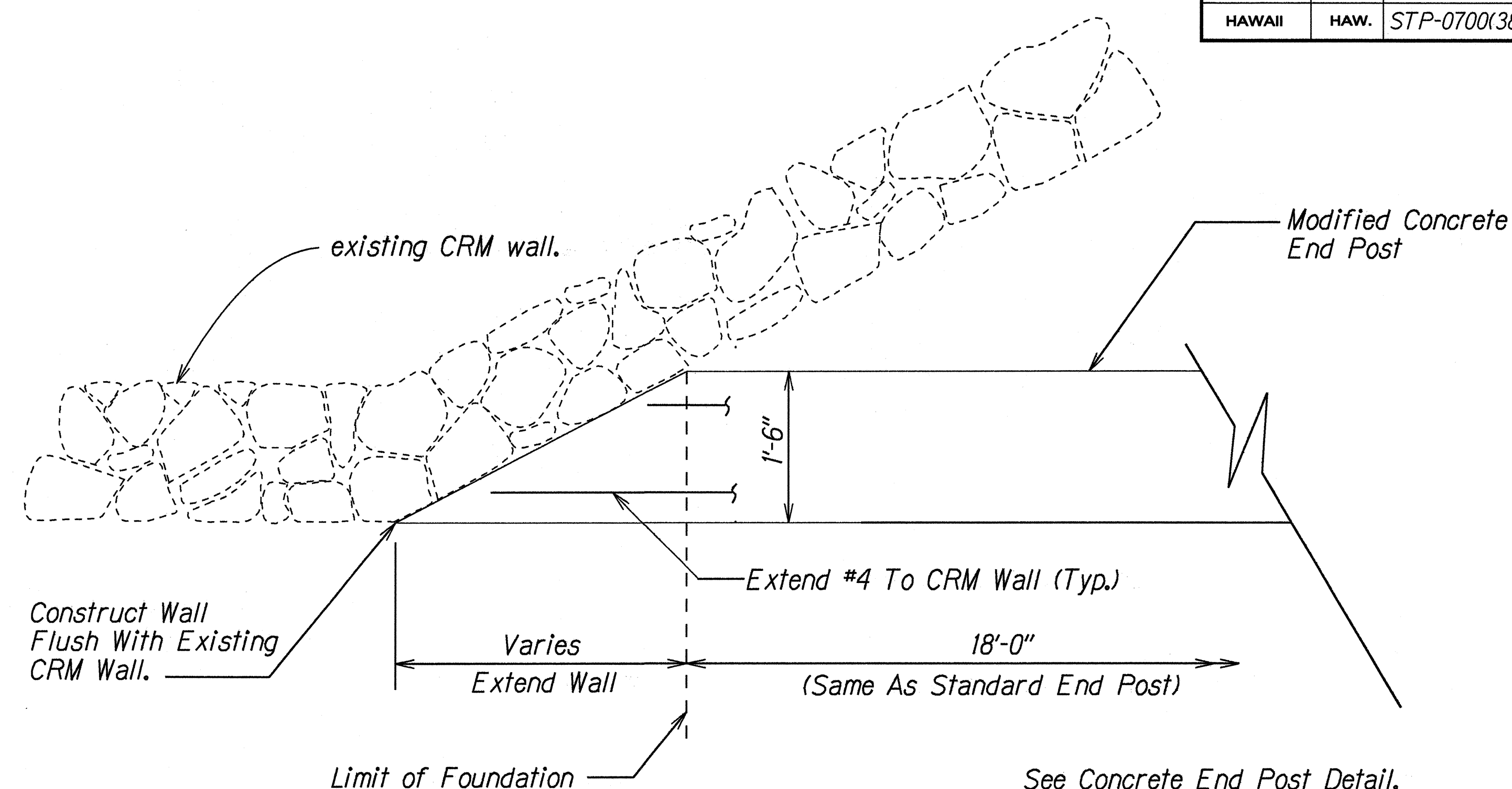
FED. ROAD DIST. NO.	STATE	FED. AID PROJ. NO.	FISCAL YEAR	SHEET NO.	TOTAL SHEETS
HAWAII	HAW.	STP-0700(38)	1998	23	29



SECTION

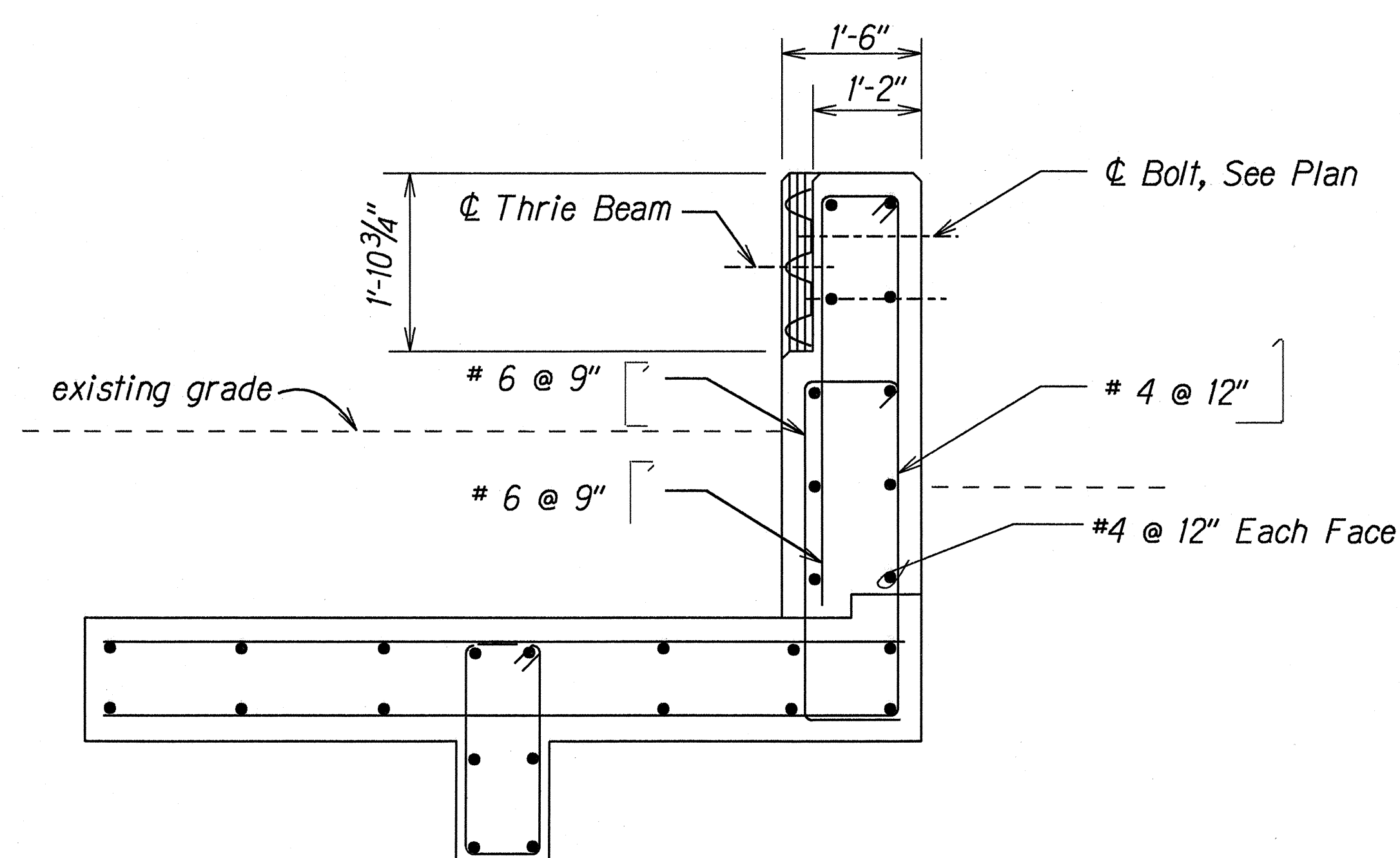
Scale: 3/4" = 1'-0"

A
22/23



PLAN - MODIFIED CONCRETE END POST

Scale: 1" = 1'-0"

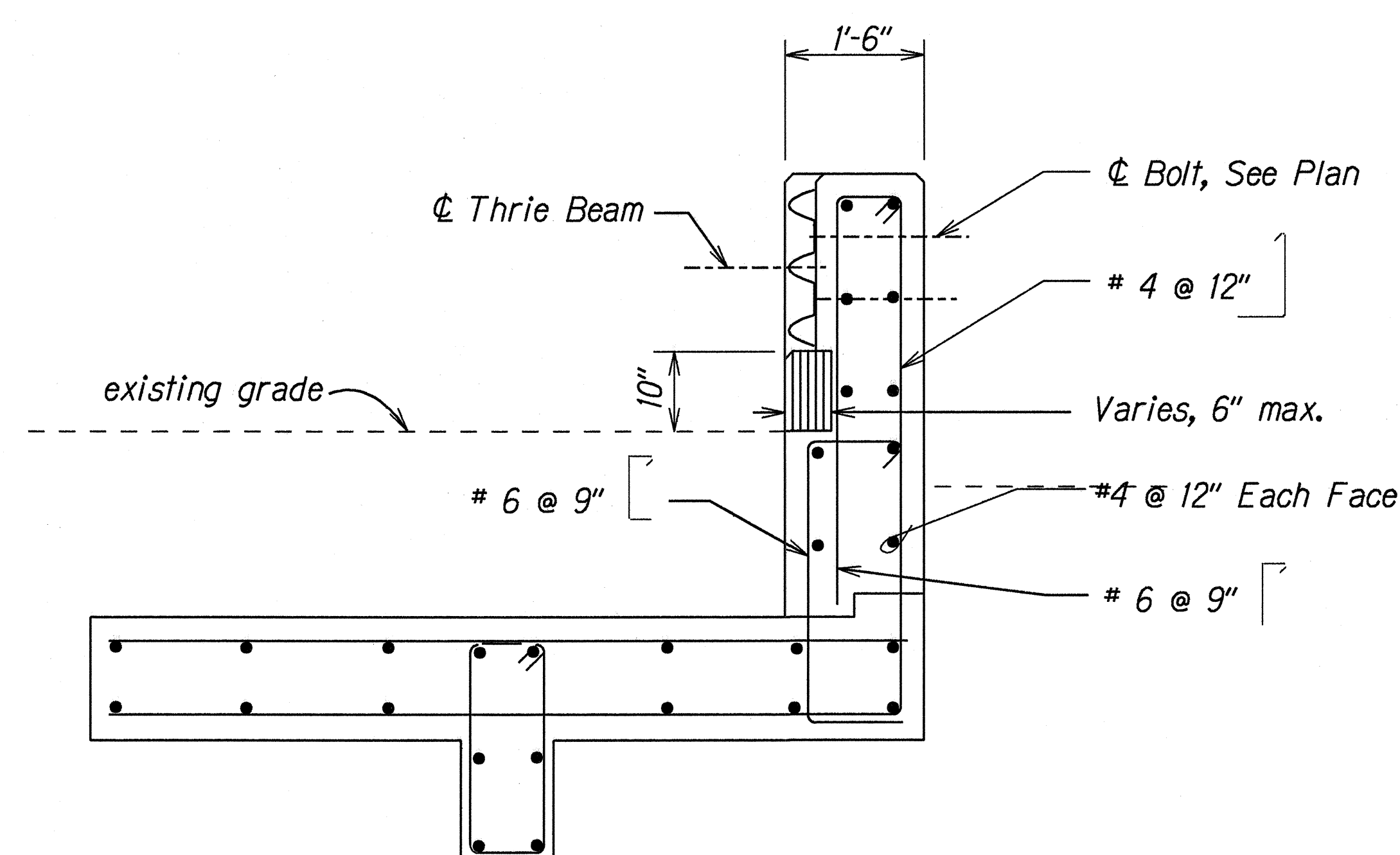


Note:
See Section A For Details And
Dimensions Not Shown.

SECTION

Scale: 3/4" = 1'-0"

B
22/23



Note:
See Section A For Details And
Dimensions Not Shown.

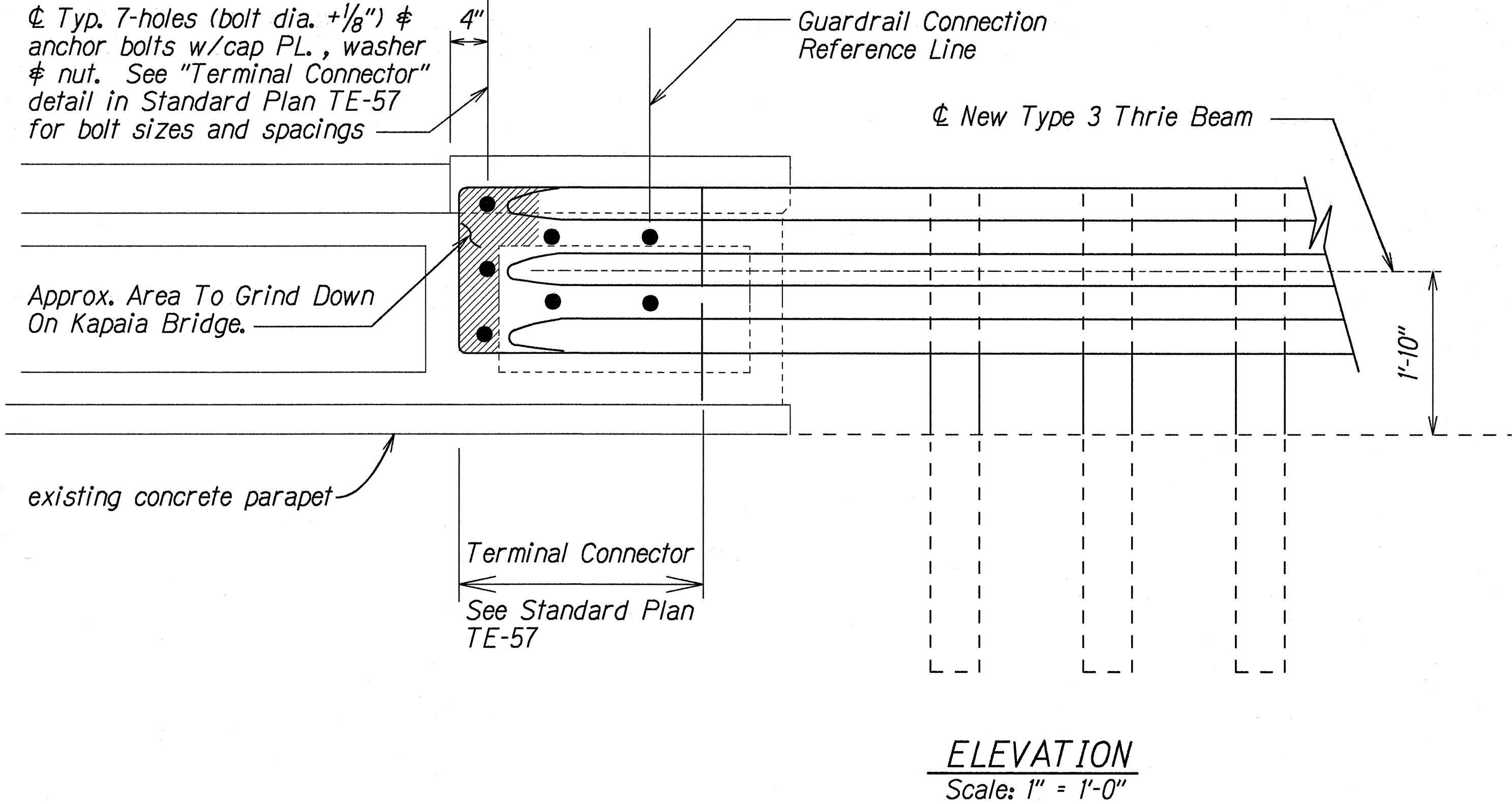
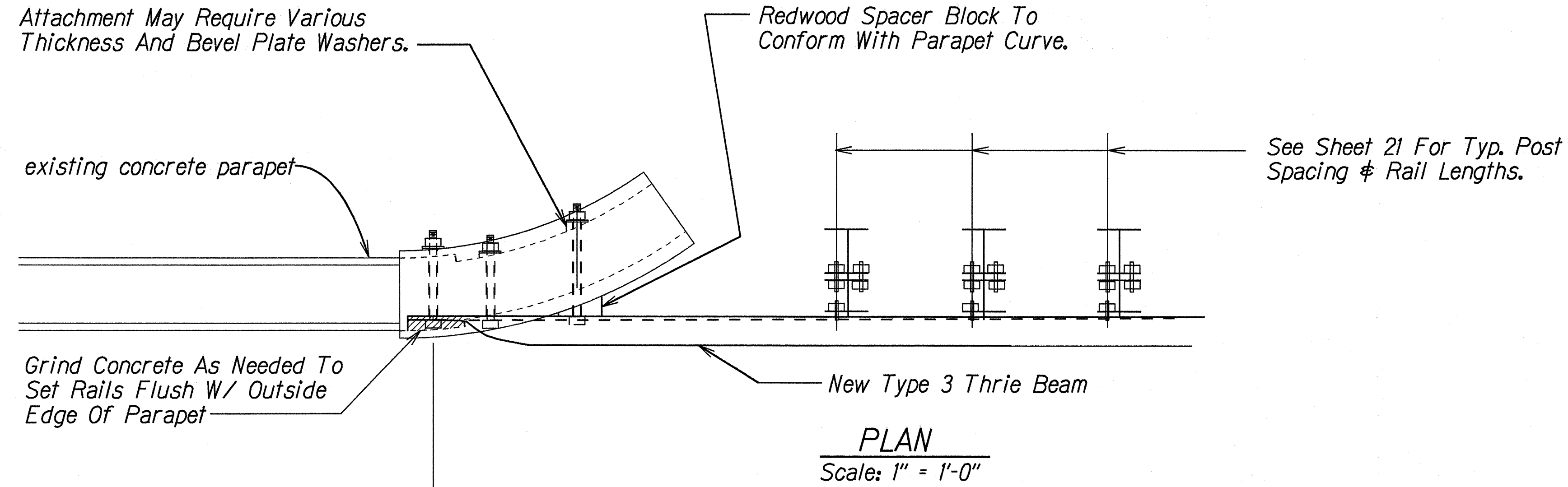
SECTION

Scale: 3/4" = 1'-0"

C
22/23

STATE OF HAWAII
DEPARTMENT OF TRANSPORTATION
HIGHWAYS DIVISION
END CONNECTIONS
RICE STREET, KUHIO HIGHWAY
AND KUAMOO ROAD
GUARDRAIL AND SHOULDER IMPROVEMENTS
AT VARIOUS LOCATIONS
FEDERAL AID PROJECT NO. STP-0700(38)
Scale: As Shown Date: May, 1997
SHEET No. 2 OF 3 SHEETS

FED. ROAD DIST. NO.	STATE	FED. AID PROJ. NO.	FISCAL YEAR	SHEET NO.	TOTAL SHEETS
HAWAII	HAW.	STP-0700(38)	1998	24	29



NOTES

- See plan for location of connections.
- Guardrail connections are typical for both Kapaia Bridge & Opaikaa Bridge. (Kapaia Bridge shown) See plan for location of connections.
- Connection of guardrail to bridge parapet shall be paid for under 606.9000 - CONNECT GUARDRAIL TO BRIDGE PARAPET OR CONCRETE END POST.
- See plan sheet no. 22 for notes and details not shown.

TYPE 3 THRIE BEAM CONNECTION DETAIL AT BRIDGES

ORIGINAL PLAN	SURVEY PLOTTED BY	DATE
NOTE BOOK	DRAWN BY J. Hurlbut	9/96
dd4/jason	CHECKED BY J. Hurlbut	
N. Brinkman	QUANTITIES BY	
	CHECKED BY	

STATE OF HAWAII
DEPARTMENT OF TRANSPORTATION
HIGHWAYS DIVISION

END CONNECTIONS
RICE STREET, KUHIO HIGHWAY
AND KUAMOO ROAD
GUARDRAIL AND SHOULDER IMPROVEMENTS
AT VARIOUS LOCATIONS
FEDERAL AID PROJECT NO. STP-0700(38)
Scale: As Shown Date: Sept, 1996
SHEET No. 3 OF 3 SHEETS