

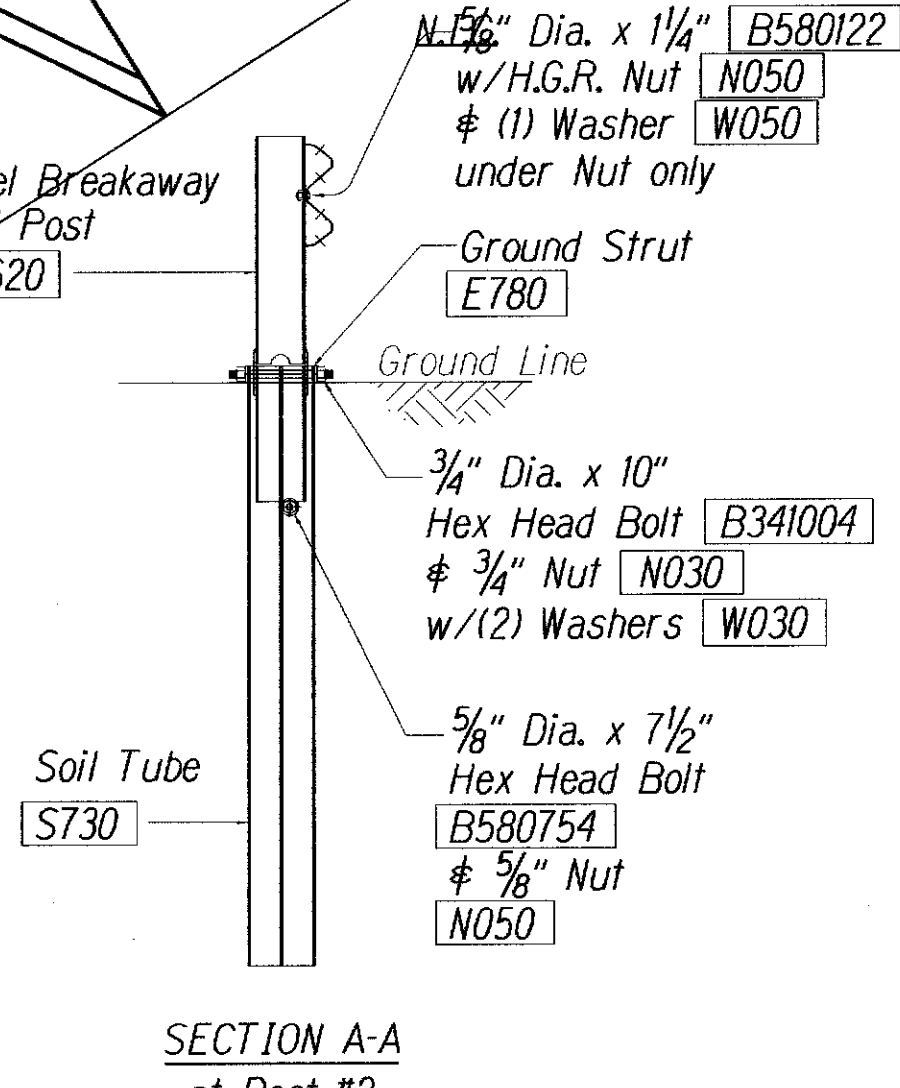
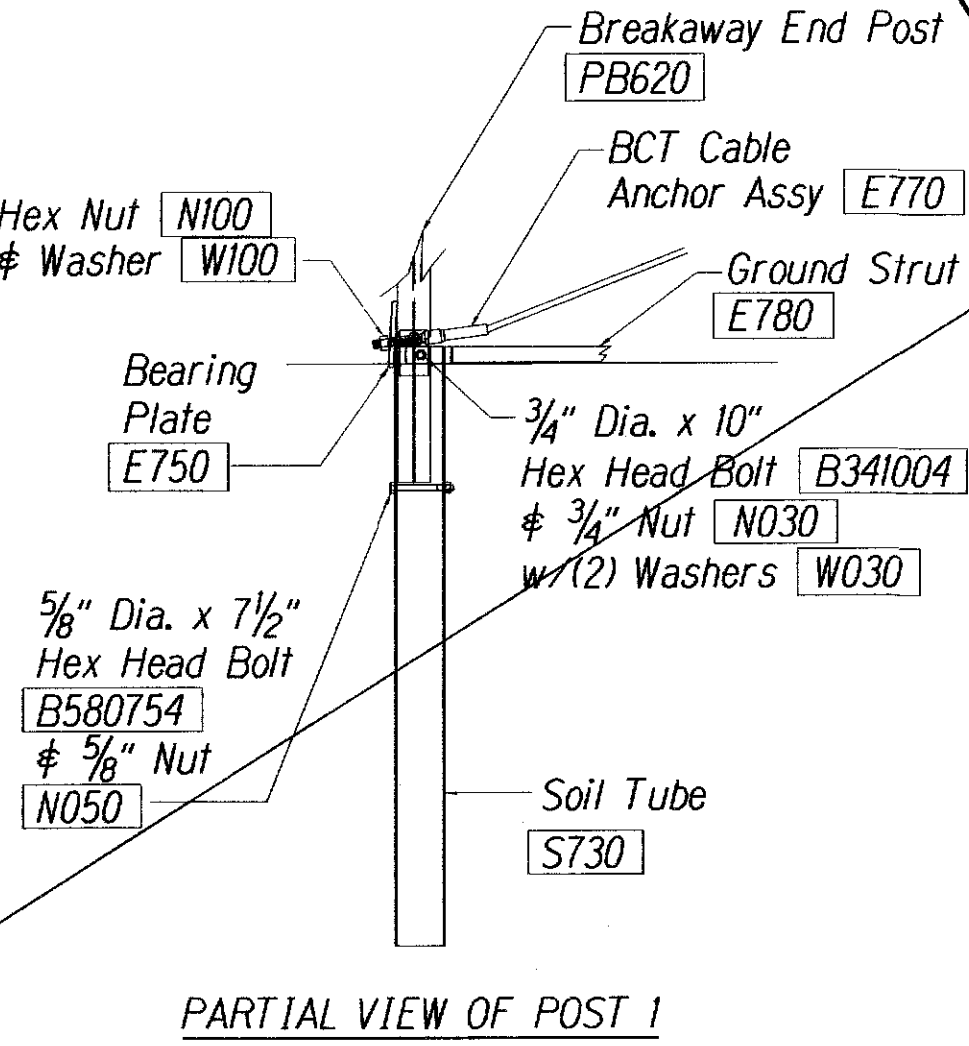
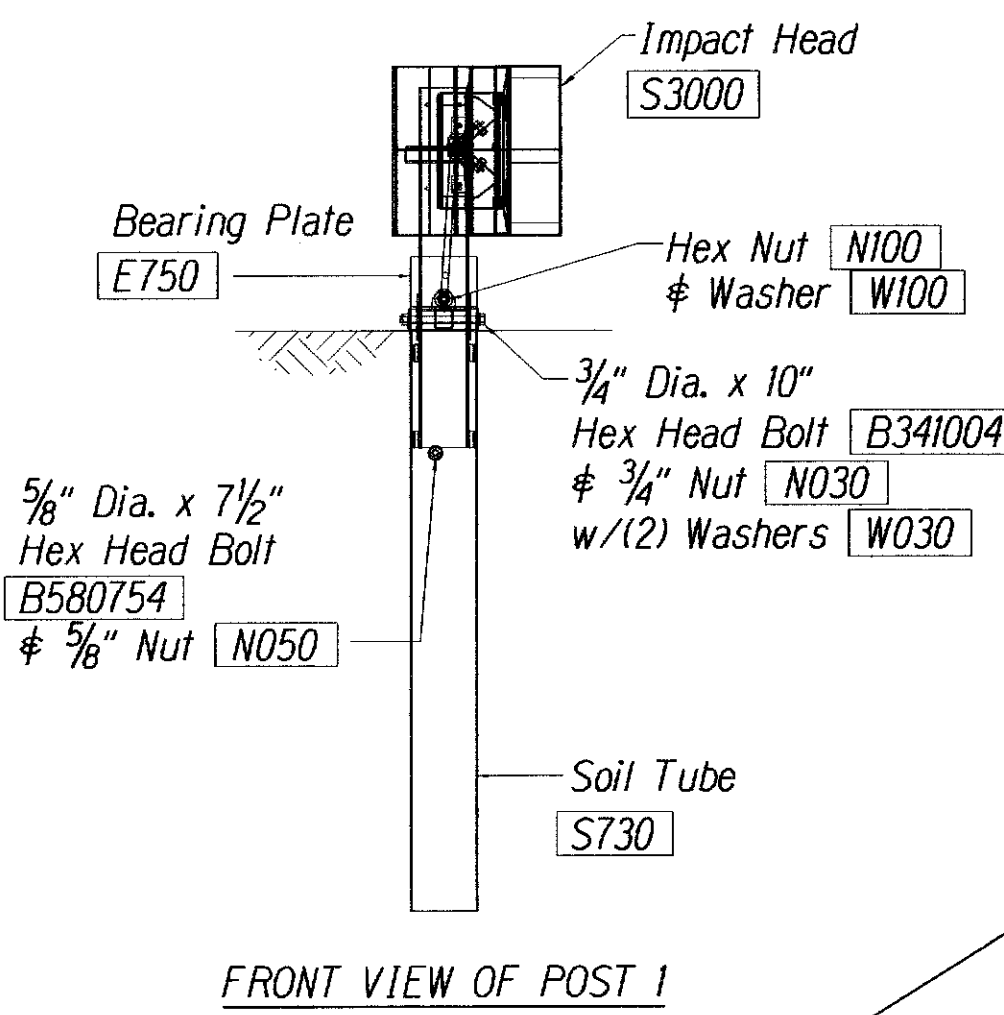
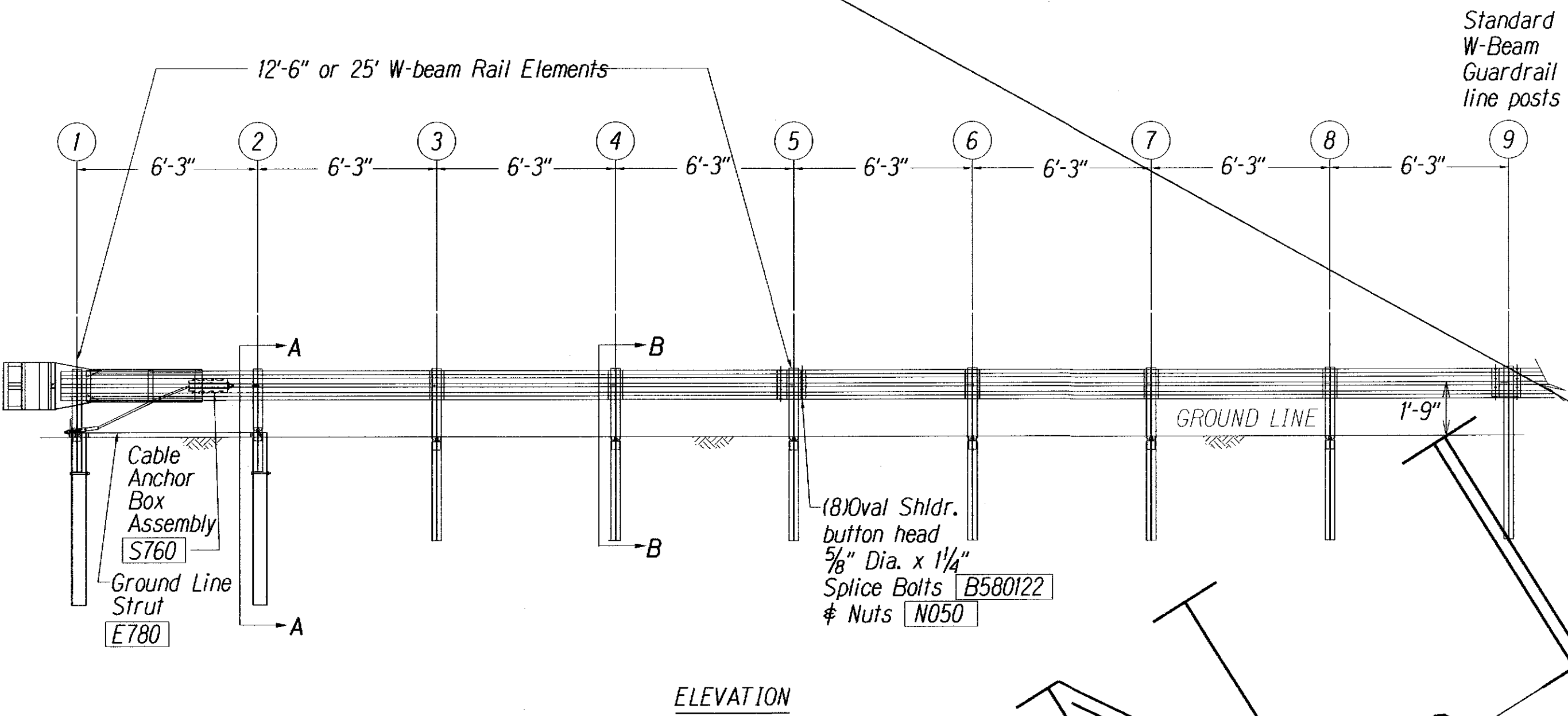
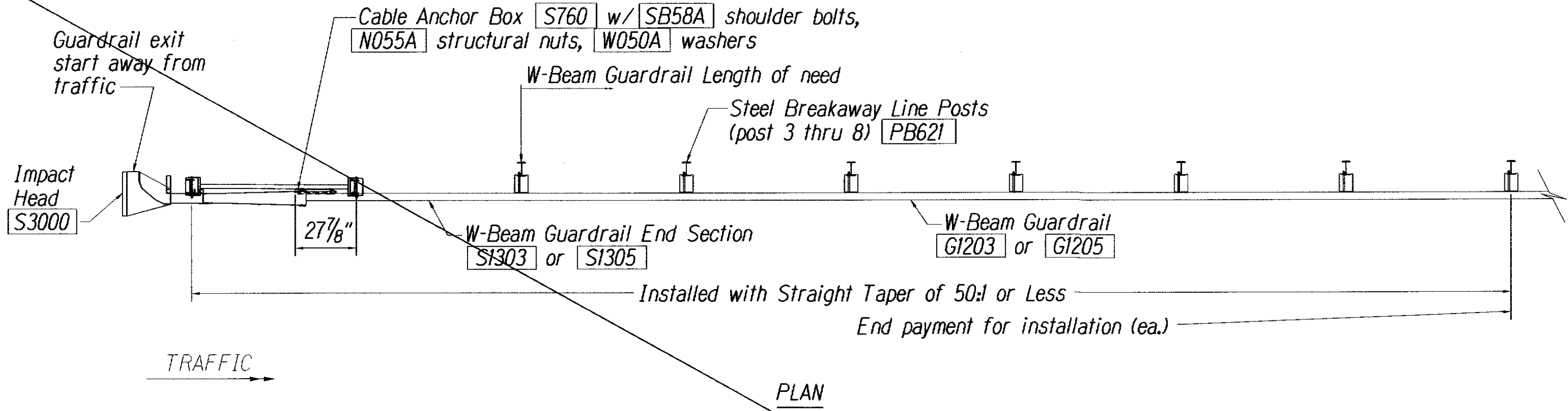
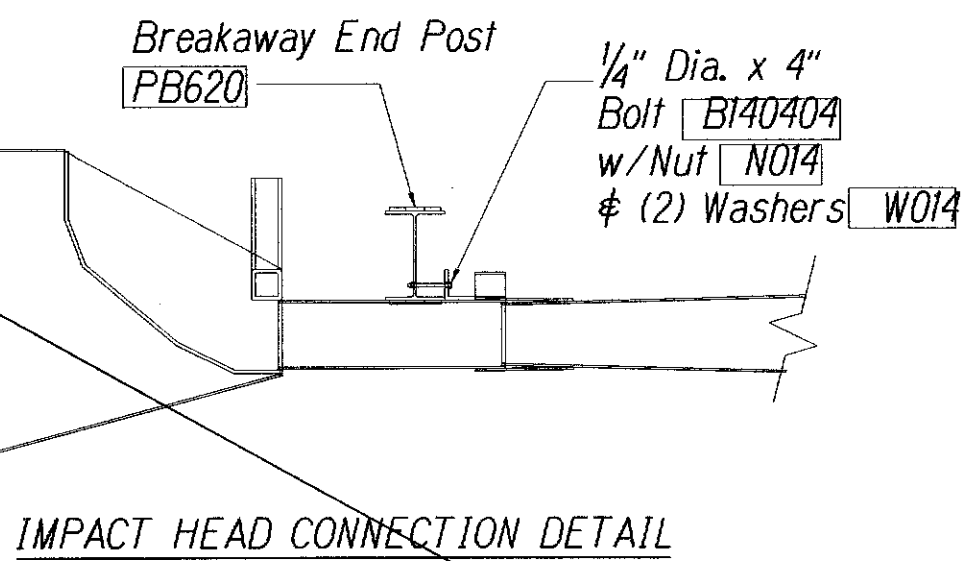
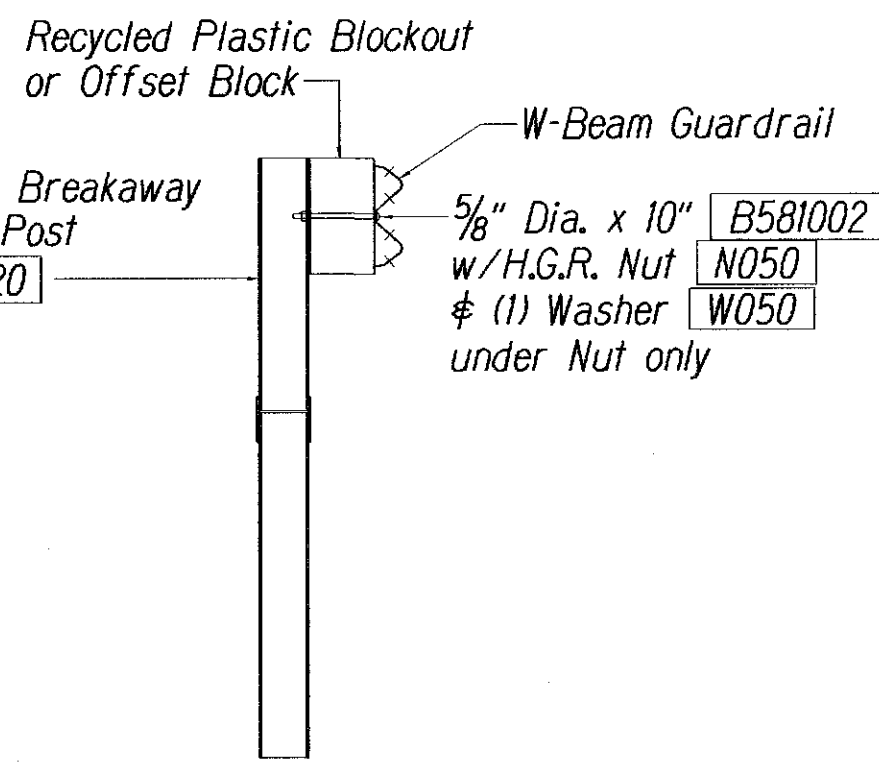
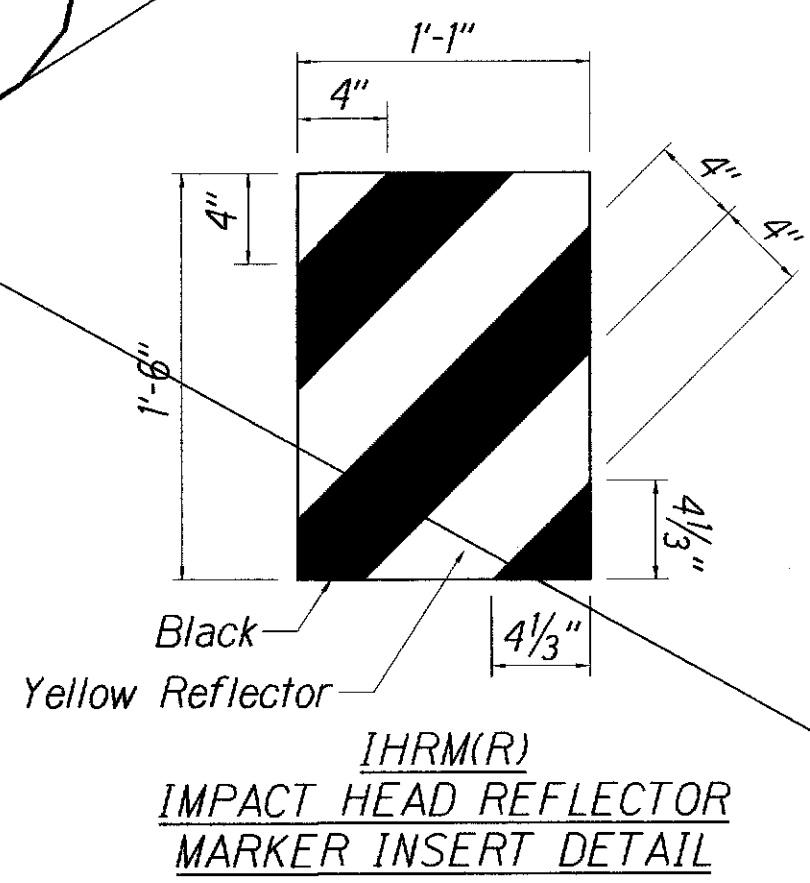
FED. ROAD DIST. NO.	STATE	FED. AID PROJ. NO.	FISCAL YEAR	SHEET NO.	TOTAL SHEETS
HAWAII	HAW.	STP-050-1(24)	2002	28	40

ITEM NO.	QTY.	BILL OF MATERIALS
S3000	1	IMPACT HEAD
S1303/S1305	1	W-BEAM GUARDRAIL END SECTION 12 GA. 12.5' or 25'
G1203/G1205	3/1	W-BEAM GUARDRAIL, 12 GA, 12.5' or 25'
S730	2	*FOUNDATION SOIL TUBE, 6" x 8" x 72"
E750	1	BEARING PLATE
S760	1	CABLE ANCHOR BOX
E770	1	BCT CABLE ANCHOR ASSEMBLY
E780	1	GROUND STRUT
PB620	2	STEEL BREAKAWAY END POSTS
PB621	6	STEEL BREAKAWAY LINE POSTS
	6	RECYCLED PLASTIC BLOCKOUTS OR OFFSET BLOCK
	1	IMPACT HEAD REFLECTOR MARKER - IHRM(R) OR (L)
HARDWARE		
B580122	17/33	5/8" Dia. x 1 1/4" SPLICE BOLTS, POST #2
B580754	2	5/8" Dia. x 7 1/2" HEX BOLTS
B341004	2	3/4" Dia. x 10" HEX BOLTS
B341002	6	5/8" Dia. x 10" H.G.R. BOLT (POST 2 ONLY)
B581802	6	5/8" Dia. x 18" H.G.R. BOLT (POST 3 THRU 8)
N050	26/42	5/8" Dia. H.G.R. NUT (SPLICE 17/33, SOIL TUBES 2, POST 2 THRU 8)
N030	2	3/4" Dia. HEX NUTS
W050	7	H.G.R. WASHER
W030	4	3/4" ID WASHER
N100	2	1" ANCHOR CABLE HEX NUT
W100	2	1" ANCHOR CABLE WASHER
B140404	2	1/4" x 4" HEX BOLT
N014	2	1/4" HEX NUT
W014	4	1/4" WASHER
SB58A	8	CABLE ANCHOR BOX SHOULDER BOLTS
N055A	8	1/2" A325 STRUCTURAL NUTS
W050A	16	1 1/16" OD x 3/16" ID A325 STR. WASHER

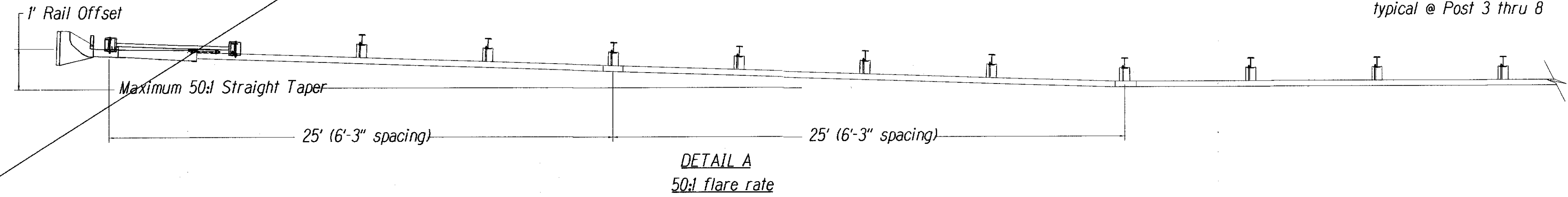
Foundation Tube Options For Posts 1 & 2  
 \*6'-0" Split Foundation Tubes S730  
 \*6'-0" Solid Foundation Tubes E731  
 \*5'-0" Foundation Tubes S735 W/Soil Plates SP600  
 \*4'-6" Foundation Tubes E735 W/Soil Plates SP600

# GENERAL NOTES:

- Breakaway steel posts are required with the Sequential Kinking Terminal.
- All bolts, nuts, cable assemblies, cable anchors and bearing plates shall be galvanized.
- When the Sequential Kinking Terminal is selected as the end treatment for W-Beam Guardrail installation, the W-Beam Guardrail will be flared at a rate of 50:1 to prevent the impact head from encroaching on the shoulder. The flare is not required and may be decreased or eliminated for specific installations.
- The soil tube shall not protrude more than 4" above ground (measured) along a 5' cord). Site grading may be necessary to meet this requirement.
- The soil tubes may be driven with an approved driving head. They shall not be driven with the post in the tube. If the soil tubes are placed in drilled holes, the backfill material must be satisfactorily compacted to prevent settlement.
- When rock is encountered during excavation, a 12" dia. post hole, 20" deep may be used if approved by the Engineer. Granular material will be placed in the bottom of the hole approx. 2 1/2" deep to provide drainage. The soil tubes will be field cut to length, placed in the hole and backfilled with adequately compacted material excavated from the hole.
- The breakaway cable assembly must be taut. A locking device, (vice grips or channel lock pliers) should be used to prevent the cable from twisting when tightening nuts.
- A special site evaluation should be considered prior to using the Sequential Kinking Terminal where there is less than 25' between the outer side of the Sequential Kinking Terminal and any adjacent driving lane.
- (R) or (L) indicates right or left Impact Head Reflector Marker (IHRM). Providing and installing of IHRM shall be considered incidental to end treatment.
- The stripes for IHRM shall slope downward at an angle of 45° towards the side of the end treatment that traffic is to pass.



## SECTION B-B typical @ Post 3 thru 8



LEGEND FOR AS-BUILT POSTINGS	
	Squiggly line for as-built deletion
	Double line for as-built deletion
	Text for as-built posting

STATE OF HAWAII  
 DEPARTMENT OF TRANSPORTATION  
 HIGHWAYS DIVISION  
**SKT-350**  
**SEQUENTIAL KINKING TERMINAL**  
 KAUMUALII HIGHWAY  
 Guardrail and Shoulder Improvements  
 Omao to Hanapepe  
 Fed. Aid Project No. STP-050-1(24)  
 Not to Scale Date: July 2001  
 SHEET No. 1 OF 1 SHEETS