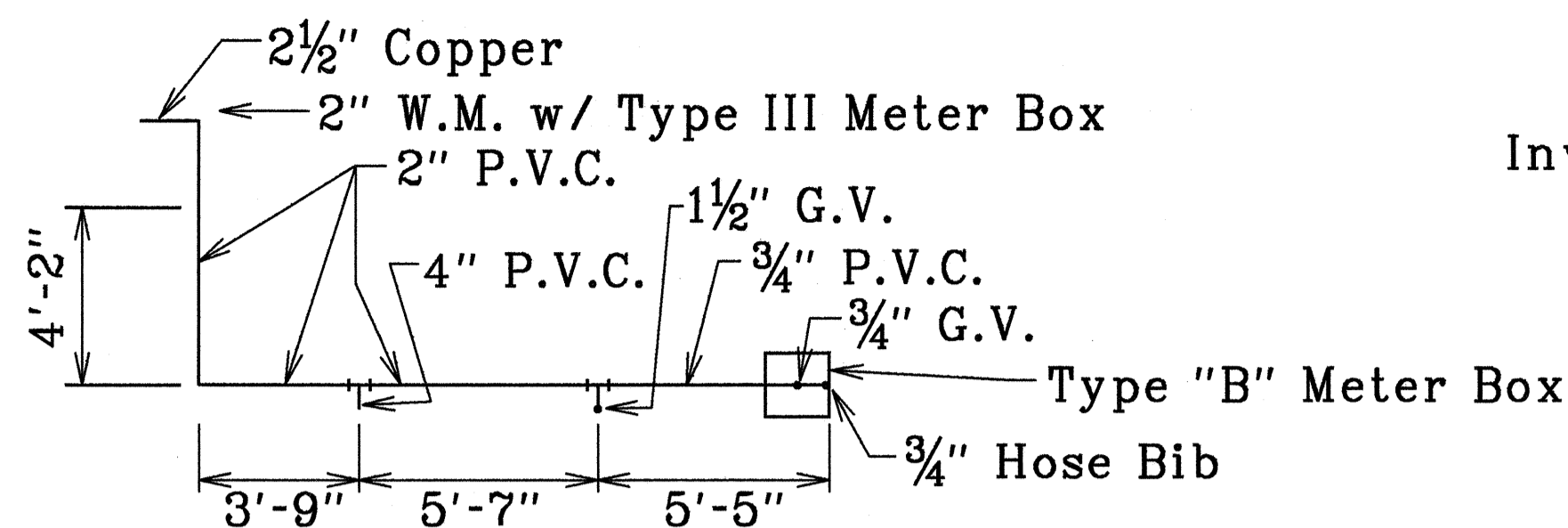
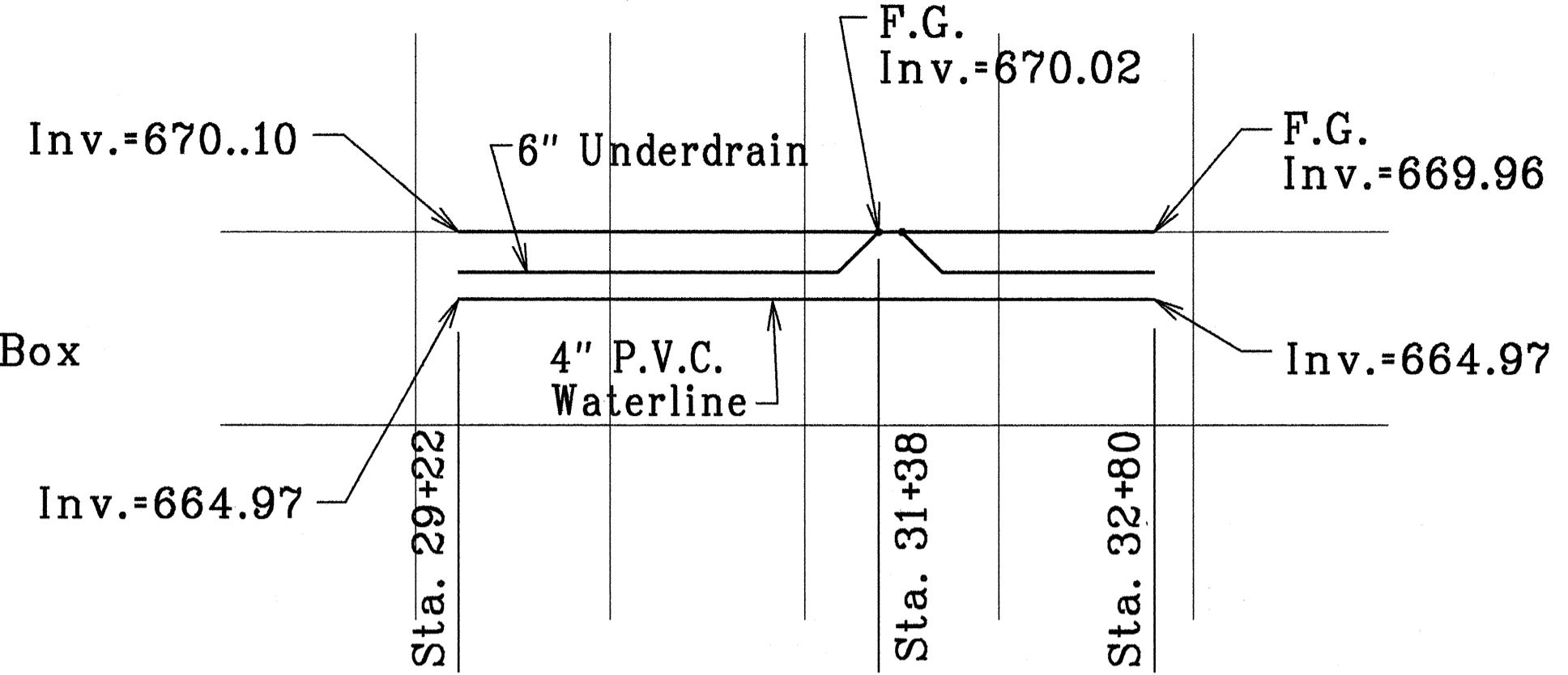


FED. ROAD DIST. NO.	STATE	FED. AID PROJ. NO.	FISCAL YEAR	SHEET NO.	TOTAL SHEETS
HAWAII	HAW.	STP-050-1(9)	1995	19	29

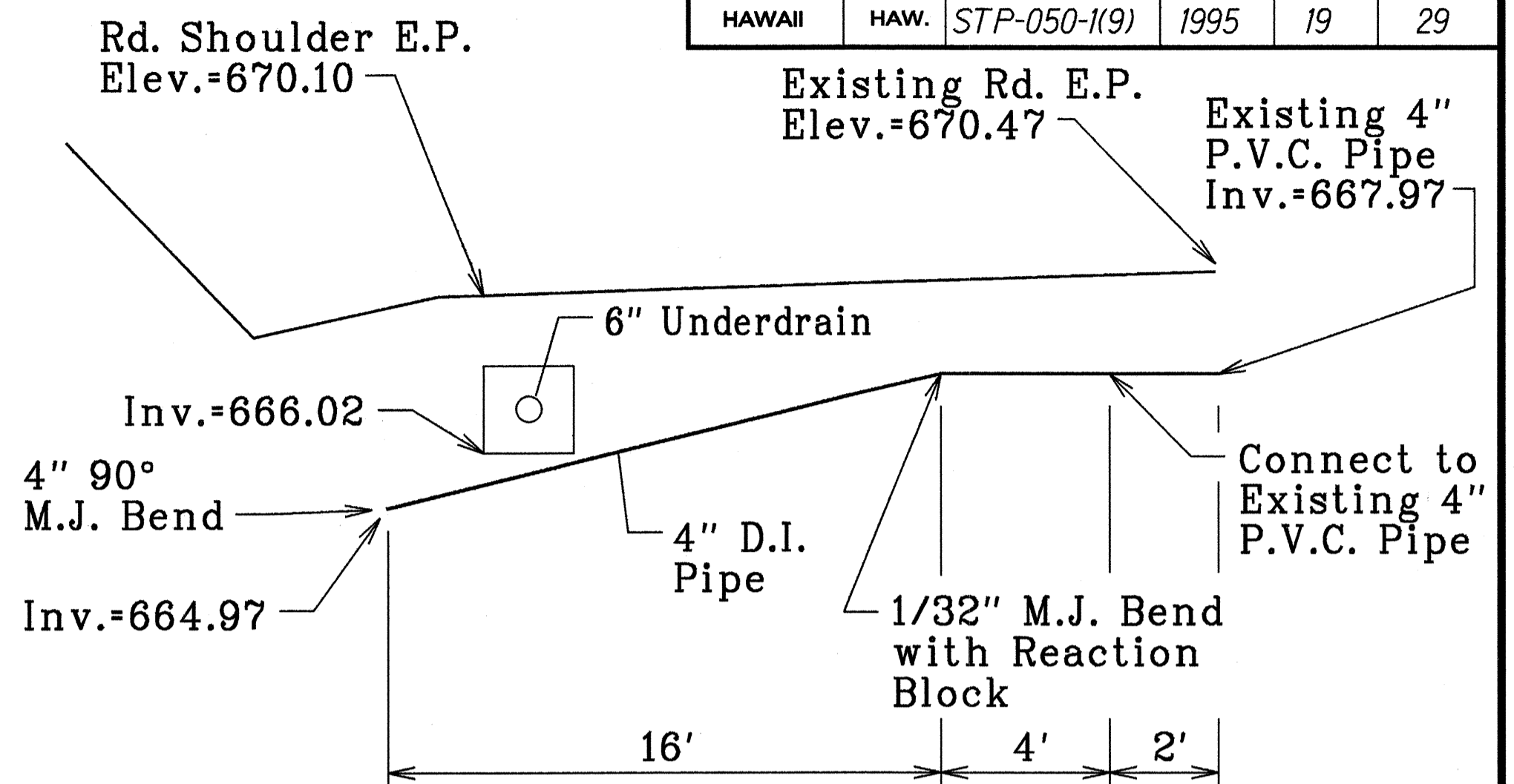


PROFILE
Not to Scale

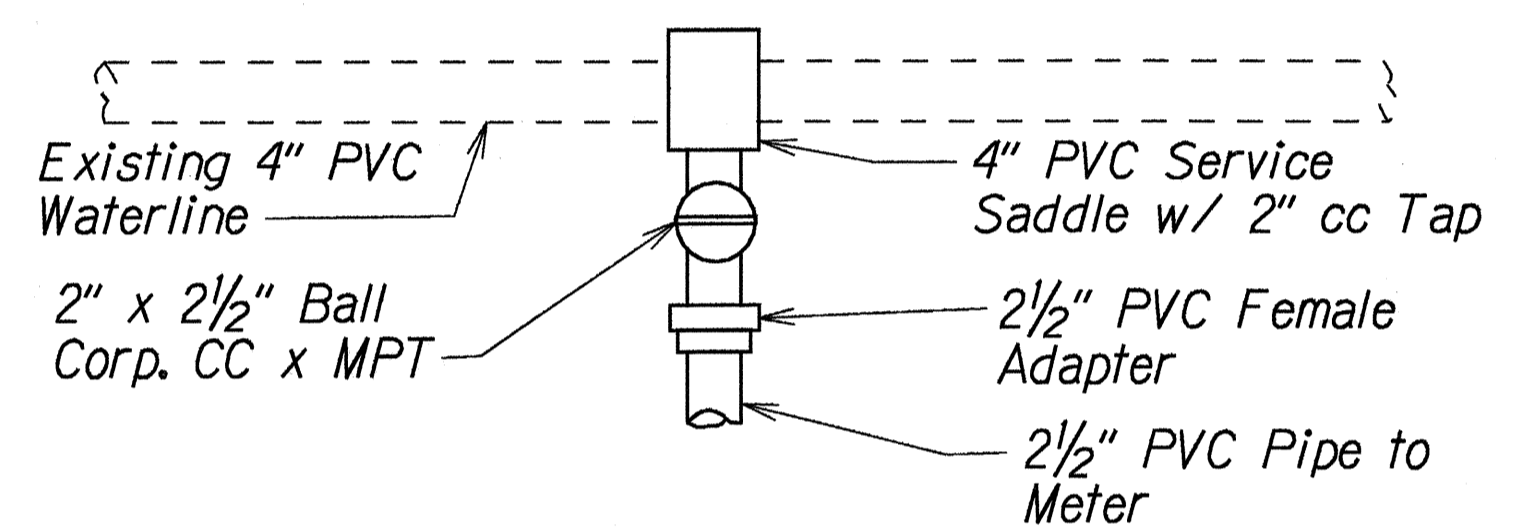


PROFILE
Not to Scale

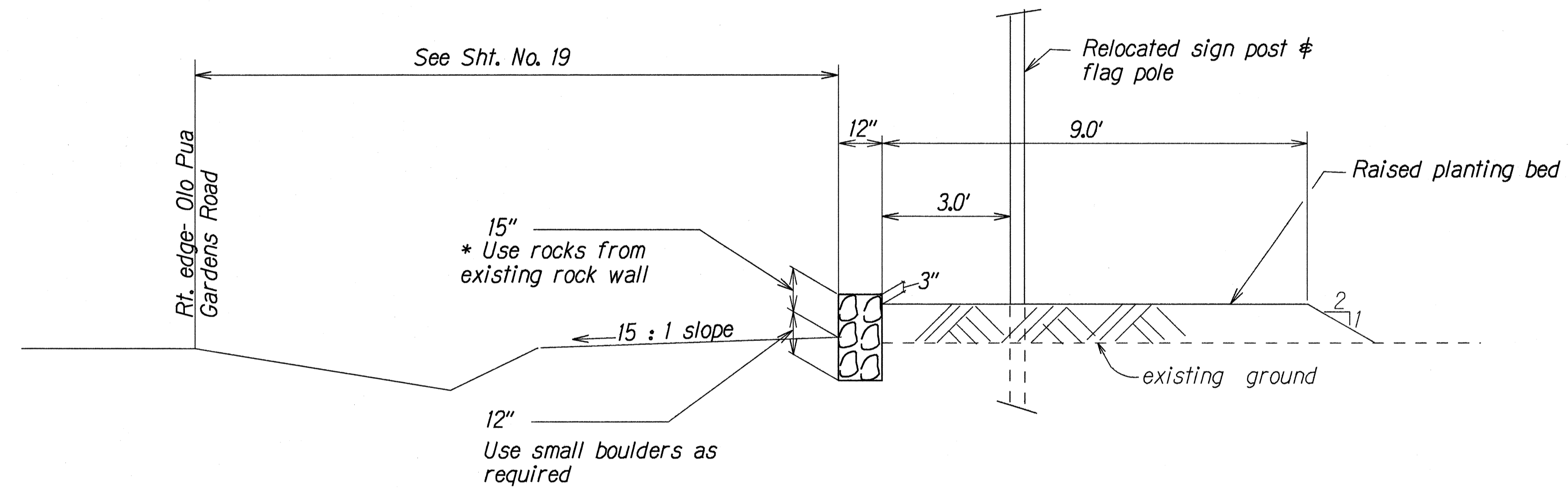
4" P.V.C. WATERLINE RELOCATION



PROFILE
Not to Scale

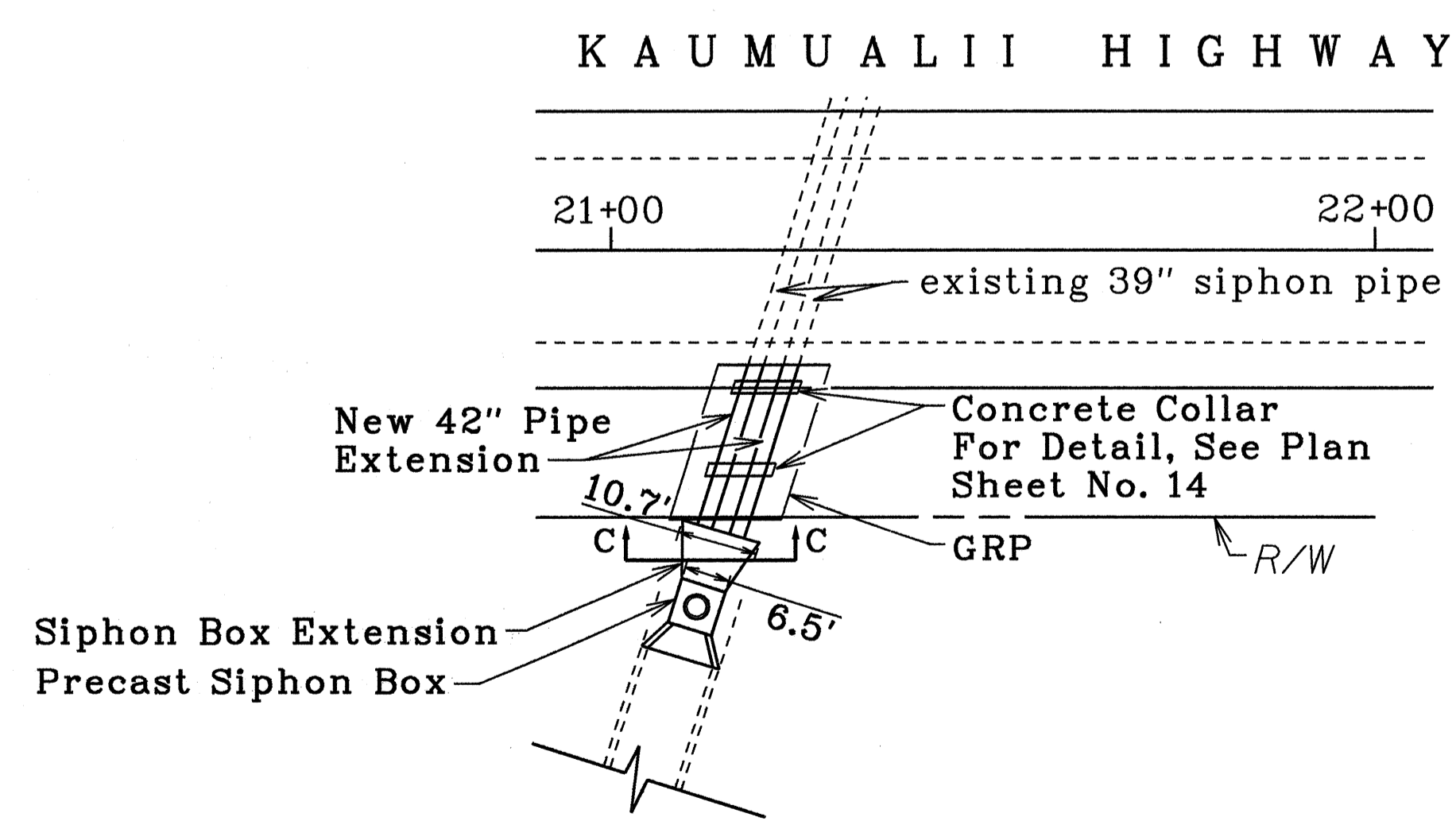


WATER METER CONNECTION
Not to Scale

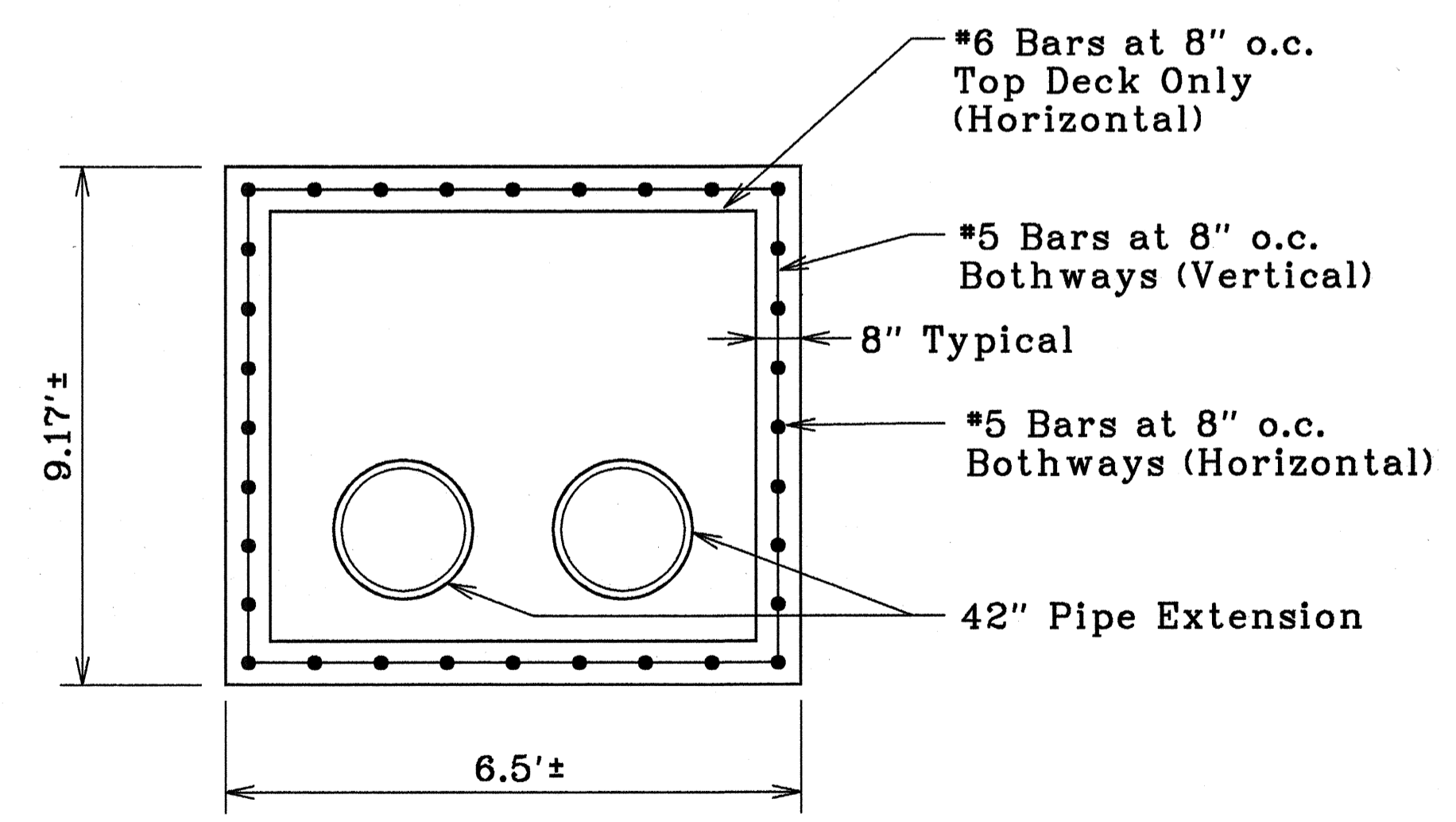


SECTION
Scale: 1/2" = 1'-0"

* Rockwall shall be constructed without having the grout being exposed on the exterior face of the wall. Grout shall be placed on interior of the wall only.



SIPHON INLET AT STA. 21+15 RT.
Not to Scale



SECTION C-C
Not to Scale

SURVEY PLOTTED BY	DATE
DRAWN BY Gary Montcastle	X
DESIGNED BY S. Mathews	
CHECKED BY J. Mathews	
ORIGINAL PLAN	
NOTE BOOK	
REL. COPY	
REL. COPY	

STATE OF HAWAII
DEPARTMENT OF TRANSPORTATION
HIGHWAYS DIVISION

WALL RECONSTRUCTION #
SIGN RELOCATION
KAUMUALII HIGHWAY IMPROVEMENTS
AT HALEWILI ROAD
Federal Aid Project No. STP-050-1(9)

Scale: As shown
Date: Feb., 1995

SHEET No. 2 OF 2 SHEETS