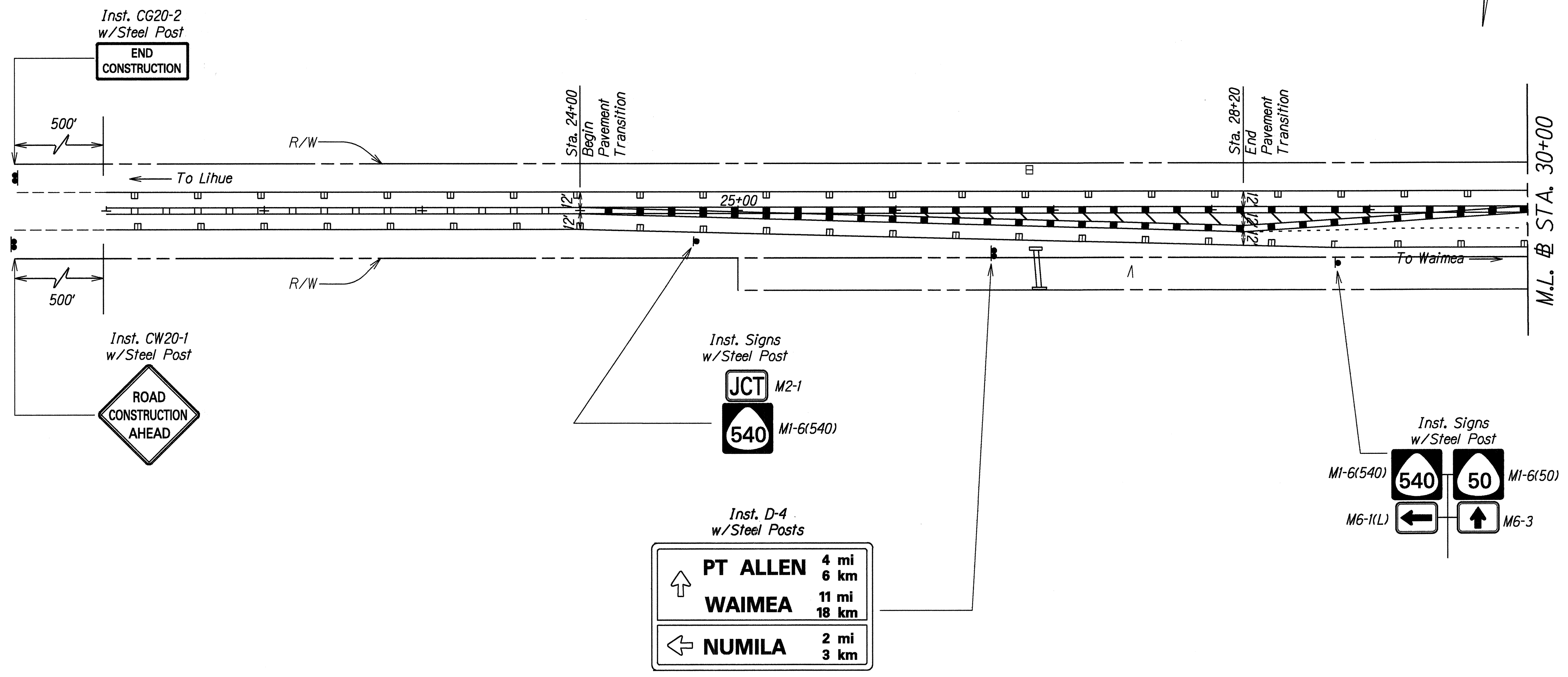


FED. ROAD DIST. NO.	STATE	FED. AID PROJ. NO.	FISCAL YEAR	SHEET NO.	TOTAL SHEETS
HAWAII	HAW.	STP-050-1(9)	1995	21	29

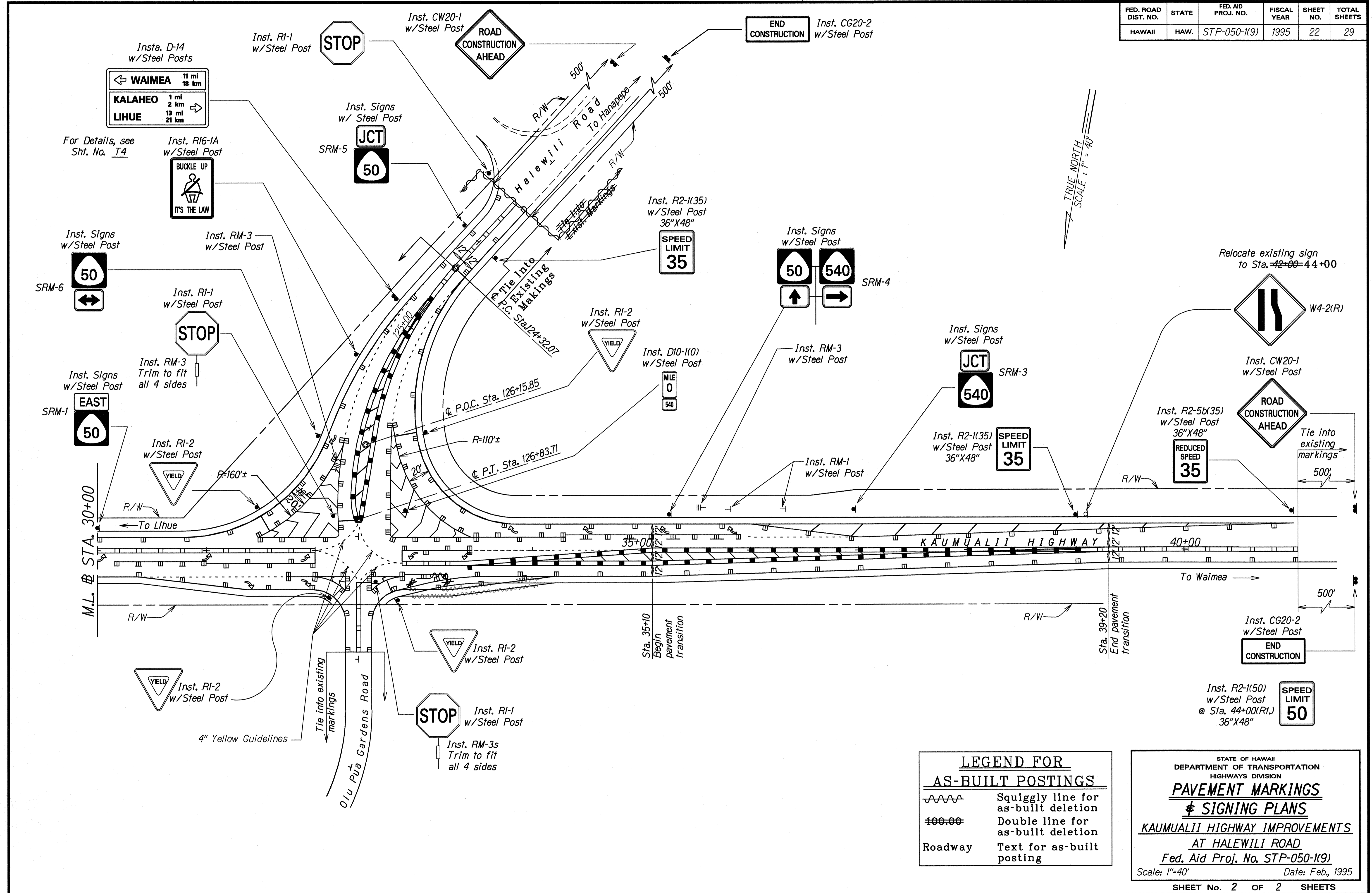
TRUE NORTH
SCALE: 1" = 40'



ORIGINAL PLAN
DATE: 12-21-95
DESIGNED BY: EHW-K
CHECKED BY: GJK
DRAWN BY: Gary Maniatis
NOTED BY: Ruby
SURVEY PLOTTED BY: DATE: 12-21-95

STATE OF HAWAII
DEPARTMENT OF TRANSPORTATION
HIGHWAYS DIVISION
PAVEMENT MARKINGS
☛ SIGNING PLANS
KAUMUALII HIGHWAY IMPROVEMENTS
AT HALEWILI ROAD
Fed. Aid Proj. No. STP-050-1(9)
Scale: 1"=40' Date: Feb, 1995
SHEET No. 1 OF 2 SHEETS

FED. ROAD DIST. NO.	STATE	FED. AID PROJ. NO.	FISCAL YEAR	SHEET NO.	TOTAL SHEETS
HAWAII	HAW.	STP-050-1(9)	1995	22	29



TRUE NORTH
SCALE: 1" = 40'

DATE	15-16-95
SURVEY PLOTTED BY	
DRAWN BY	Gary M. Manastala
DESIGNED BY	LMF/K
CHECKED BY	LMF/K
ORIGINAL PLAN	
NOTE BOOK	101, 102, 103
NO.	200/102

LEGEND FOR AS-BUILT POSTINGS

	Squiggly line for as-built deletion
	Double line for as-built deletion
Roadway	Text for as-built posting

STATE OF HAWAII
DEPARTMENT OF TRANSPORTATION
HIGHWAYS DIVISION
PAVEMENT MARKINGS
SIGNING PLANS
KAUMUALII HIGHWAY IMPROVEMENTS
AT HALEWILI ROAD
Fed. Aid Proj. No. STP-050-1(9)
Scale: 1"=40' Date: Feb., 1995