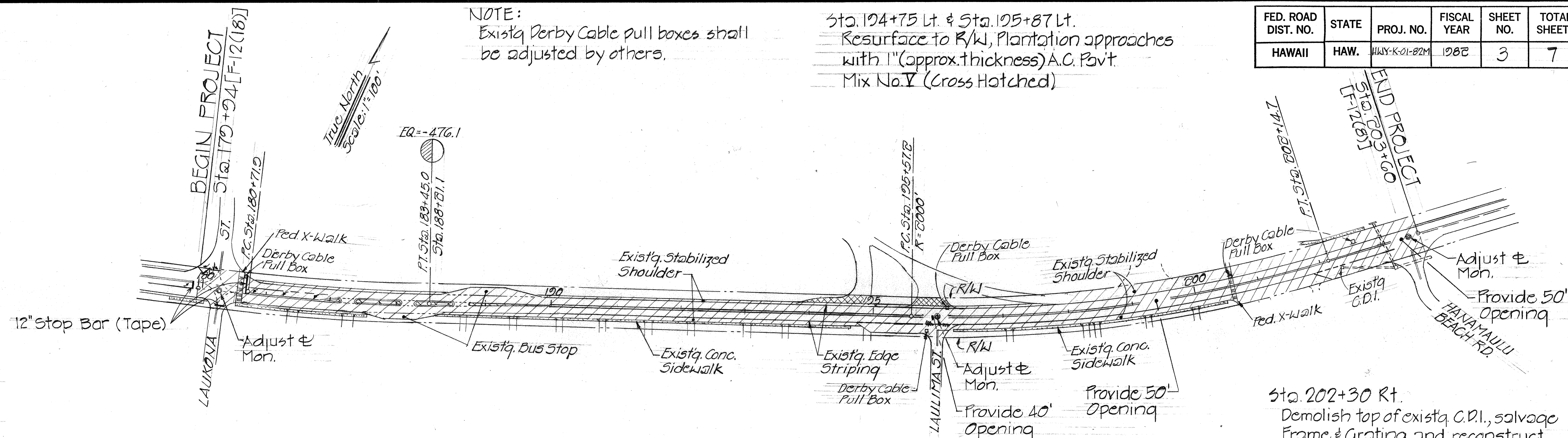


Sta. 170+24 to Sta. 203+60

Resurface existing pavement, Bus stops (Hatched). Adjust & Mon., Conc. Drop Intake and install Raised Pavement Markers and Striping as shown on Plan or indicated by the Engineer. See "Typical Section" Sheet No. 2

Est. Quant.

Brooming Off	=	2,240 S.Y.
55-l Tack Coat	=	1,300 Gal.
A.C. Pavt. Mix V	=	800 Tons
Striping (6000 L.F.)	=	20 Gal.
Cross Walk	=	4 Lanes
Pavement Arrows	=	3 Ea.
Type "A" Markers	=	8 Ea.
Type "C" Markers	=	11 Ea.
Type "D" Markers	=	23 Ea.
Type "H" Markers	=	16 Ea.
Removal of Portion of Exstg Inlet	=	Lump Sum
Class "A" Conc. for Drainage System	=	0.26 C.Y.
Installing Salvaged Frame	=	
& Grating	=	1 Ea.
Adjusting & Monument	=	3 Ea.



FED. ROAD DIST. NO.	STATE	PROJ. NO.	FISCAL YEAR	SHEET NO.	TOTAL SHEETS
HAWAII	HAW.	HWY-K-01-82M	1982	3	7

LAUKONA ST. TO HANAMAULU BEACH RD. scale: 1"=100'

SECTION 3

CONSTRUCTION NOTE:

Sta. 264+40 to Sta. 337+60

Resurface existing pavement and install Raised Pavement Markers and Striping. See "Typical Section" Sheet No. 2

Est. Quant.

Brooming Off	=	24,143 S.Y.
55-l Tack Coat	=	3,630 Gal.
A.C. Pavt. Mix V	=	2,240 Tons
Striping (15,140 L.F.)	=	52 Gal.
For Raised Pavement Markers and Striping, see Summary Table Right		

SUMMARY OF RAISED PAVEMENT MARKERS & STRIPING						
Sta. to Sta.	Type "D" Ea.	Type "H" Ea.	Type "J" Ea.	& Striping L.F.	Edge Striping L.F.	Zone
264+40 to 266+40	5	5	20	200	400	No Pass - Pass
266+40 to 266+90	3			50	100	No Pass
266+90 to 267+40	2					50' Opening - Rubbish Dump Rd.
267+40 to 267+90	3			50	100	No Pass
267+90 to 269+90	5	5	20	200	400	Pass - No Pass
269+90 to 337+60	170		672	200	13,540	Pass
TOTAL	188	10	712	500	14,540	

KEKAHA RUBBISH DUMP ROAD TO MANA BRIDGE No. 4

SECTION 1

CONSTRUCTION NOTE:

Sta. (-)3+85 to Sta. 51+00

Resurface existing pavement, Bus Stop (Sta. 49+00±). Adjust W.V.M.H. Cover (Sta. (-)3+72±) and install Raised Pavement Markers and Striping. See "Typical Section" Sheet No. 2

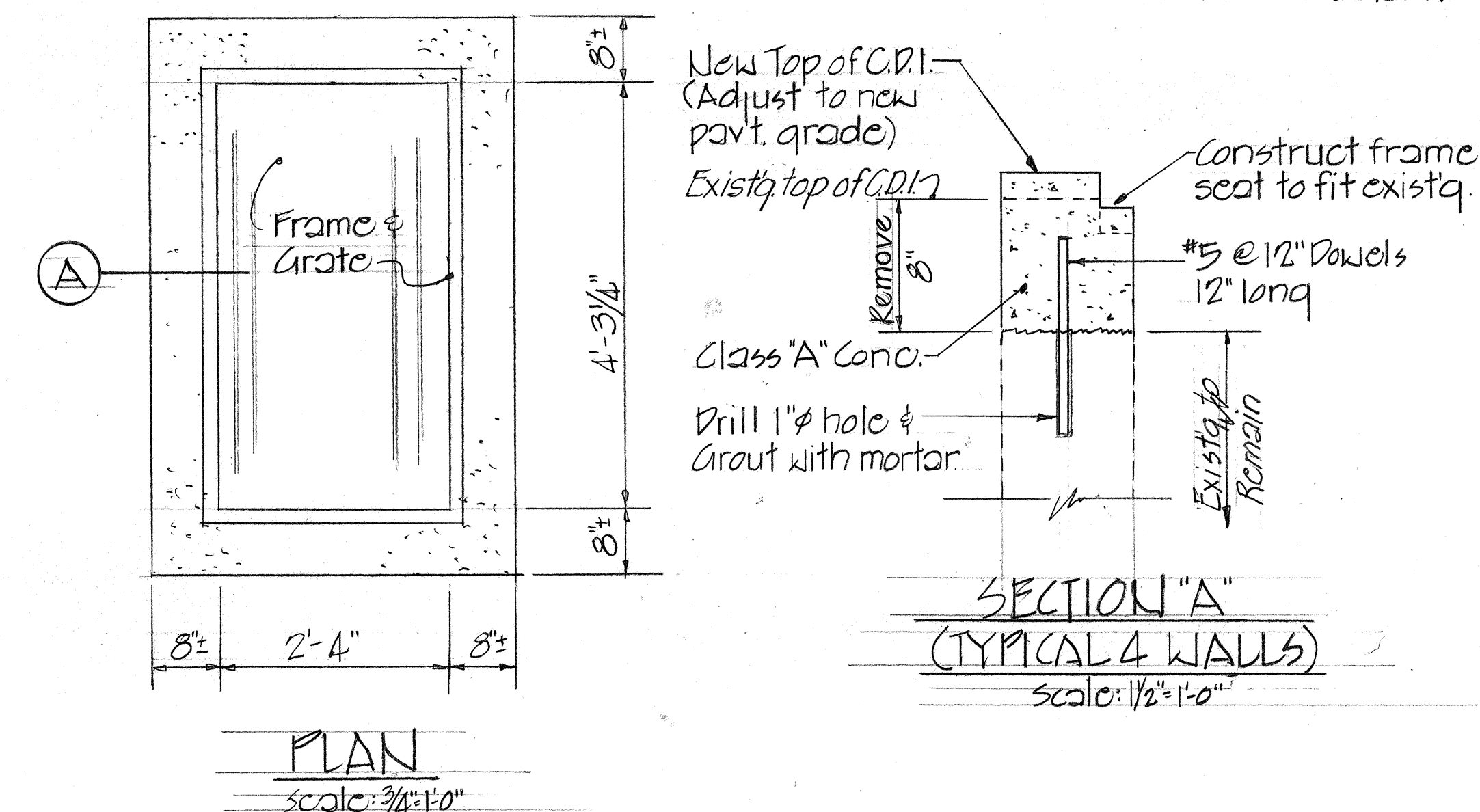
Est. Quant.

Brooming Off	=	12,474 S.Y.
55-l Tack Coat	=	1,871 Gal.
A.C. Pavt. Mix V	=	1,162 Tons
Adjust W.V.M.H. Cover = 1 Ea.		
Striping (15,605 L.F.)	=	60 Gal.
For Raised Pavement Markers and Striping, see Summary Table Right.		

SUMMARY OF RAISED PAVEMENT MARKERS & STRIPING					
Sta. to Sta.	Type "D" Ea.	& Striping L.F.	Edge Striping L.F.	Cross Walk - Lane	Zone
-3+75 to -0+50	17	325	700		No Pass
-0+50 to -0+10	2		40		40' Opening - Waena St.
-0+10 to 4+21.54 (EQ=-21.54)	18	340	680		No Pass
4+21.54 to 4+60	2				40' Opening - Huakai St.
4+60 to 9+00	23	440	880	2	No Pass
9+00 to 9+50	2		50		50' Opening - K.V.M. Hosp. Emerg. Entr.
9+50 to 14+70	27	520	1040		No Pass
14+70 to 15+20	2		50		50' Opening - Haina St.
15+20 to 18+20	16	300	600		No Pass
18+20 to 18+60	2		40		40' Opening - Maule St.
18+60 to 19+80	7	120	240		No Pass
19+80 to 20+30	2				50' Opening - Oioi St.
20+30 to 51+00 (EQ=+10.0)	155	3,080	6,160		No Pass
TOTAL	275	5,125	10,480	2	

WAIMEA CANYON DRIVE

SECTION 2

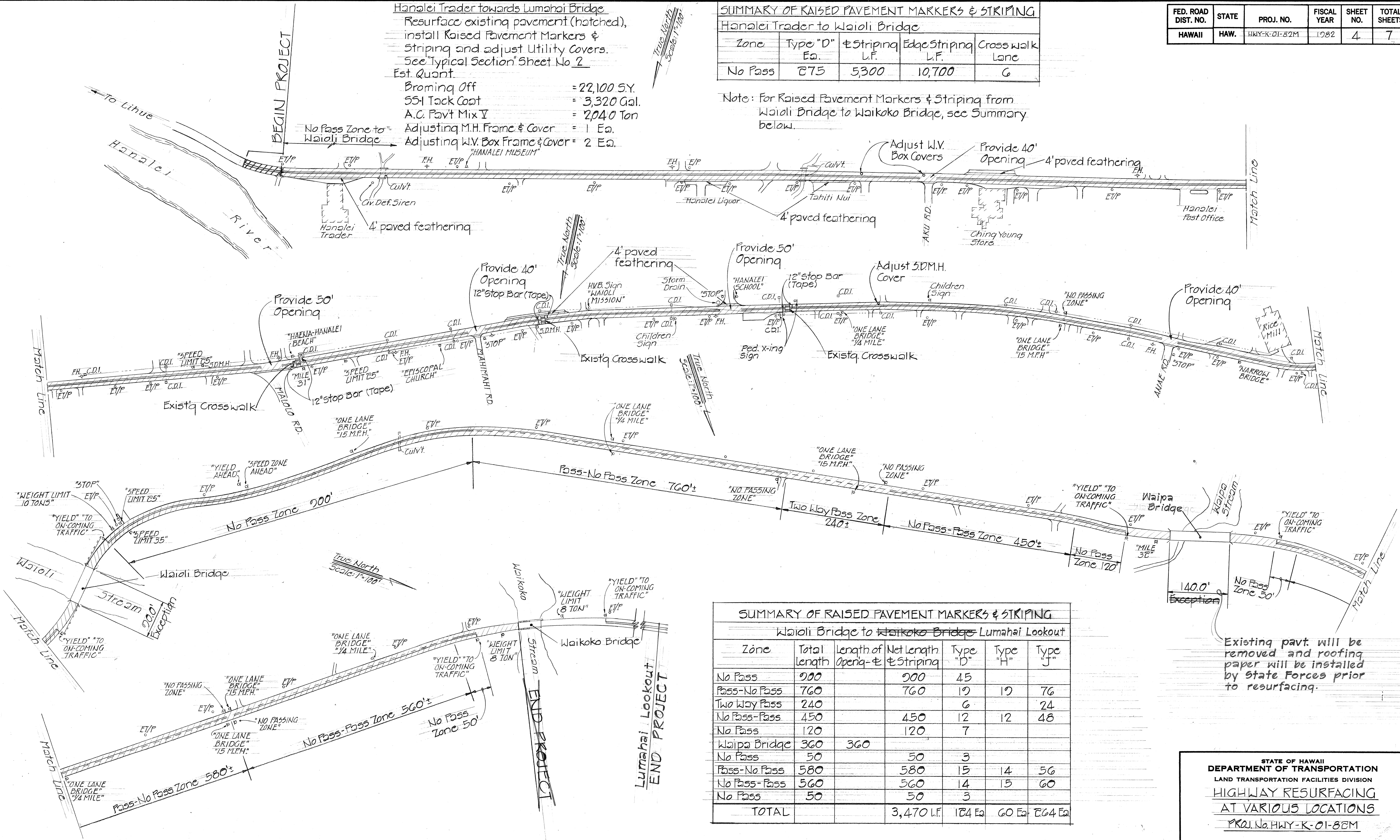


FED. ROAD DIST. NO.	STATE	PROJ. NO.	FISCAL YEAR	SHEET NO.	TOTAL SHEETS
HAWAII	HAW.	HWY-K-01-82M	1982	4	7

SUMMARY OF RAISED PAVEMENT MARKERS & STRIPING				
Hanalei Trader to Waioli Bridge				
Zone	Type "D" Eq.	Striping L.F.	Edge Striping L.F.	Crosswalk Lane
No Pass	275	5,300	10,700	6

Note: For Raised Pavement Markers & Striping from Waioli Bridge to Waikoko Bridge, see Summary below.

Hanalei Trader towards Lumahai Bridge
 Resurface existing pavement (hatched),
 install Raised Pavement Markers &
 Striping and adjust Utility Covers.
 See "Typical Section" Sheet No. 2
 Est. Quant.
 Broming Off = 22,100 S.Y.
 55-1 Tack Coat = 3,320 Gal.
 A.C. Pavt Mix V = 2,040 Ton
 Adjusting M.H. Frame & Cover = 1 Eq.
 Adjusting W.V. Box Frame & Cover = 2 Eq.



SUMMARY OF RAISED PAVEMENT MARKERS & STRIPING						
Waioli Bridge to Waikoko Bridge Lumahai Lookout						
Zone	Total Length	Length of Opening & Striping	Type "D"	Type "H"	Type "J"	
No Pass	200	200	45			
Pass-No Pass	760	760	12	12	76	
Two Way Pass	240		6		24	
No Pass-Pass	450	450	12	12	48	
No Pass	120	120	7			
Waipapa Bridge	360	360				
No Pass	50	50	3			
Pass-No Pass	580	580	15	14	56	
No Pass-Pass	560	560	14	15	60	
No Pass	50	50	3			
TOTAL		3,470 L.F.	124 Eq.	60 Eq.	264 Eq.	

Existing pavt. will be removed and roofing paper will be installed by State Forces prior to resurfacing.

STATE OF HAWAII

DEPARTMENT OF TRANSPORTATION

LAND TRANSPORTATION FACILITIES DIVISION

HIGHWAY RESURFACING

AT VARIOUS LOCATIONS

PROJ. No. HWY-K-01-82M

PLAN & SCHEDULES

Scale: 1"=100'

Jan. 1982

SHEET NO. 2 OF 2 SHEETS

SURVEY PLOTTED BY	DATE
DRAWN BY	
DESIGNED BY	
CHECKED BY	
ORIGINAL PLAN	
NOTE BOOK	
No.	

HANALEI TRADER TOWARDS LUMAHAI BRIDGE
 SECTION 4 Scale: 1"=100'