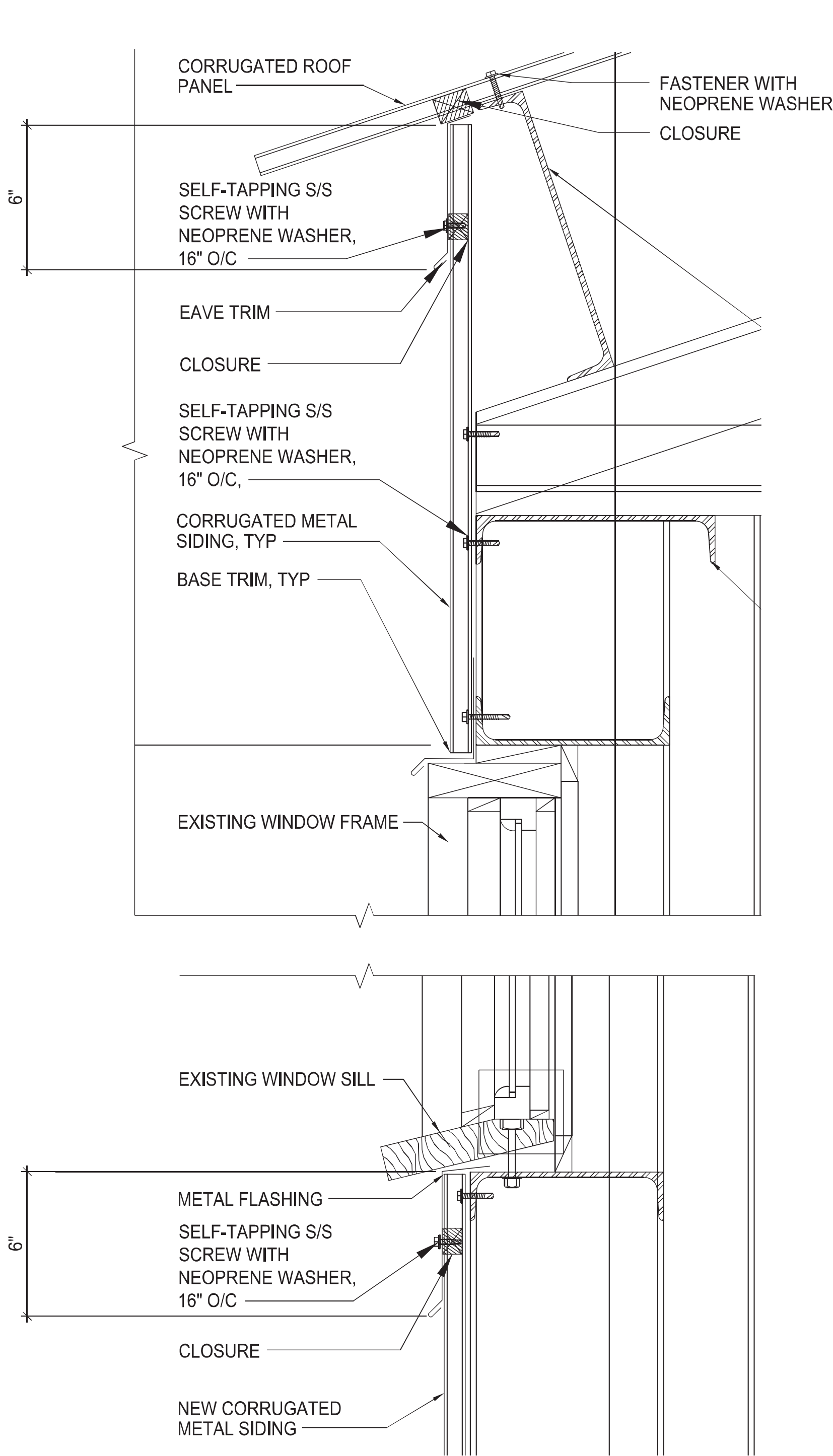


**NORTH WALL SECTION**

SCALE: 1/2" = 1'-0"



**SOUTH WALL SECTION**

SCALE: 1/2" = 1'-0"

**NOTES**

CONTRACTOR SHALL PROPERLY CLEAN POTENTIAL ASBESTOS-CONTAINING DUST ACCUMULATED ON ALL SPECIFIED AND READILY ACCESSIBLE INTERIOR SURFACES (I.E. HORIZONTAL SURFACES AND VERTICAL SURFACES) UP TO THIRTY (30) FEET IN HEIGHT. SEE SPECIFICATIONS FOR ADDITIONAL INFORMATION

1. HORIZONTAL SURFACES – GIRTS, WINDOWSILLS AND FRAMES, DOOR HEADS/JAMBS/GUIDES, BEAMS, PURLINS, DIAGONAL BRACES, STRUCTURE ROOFS, OFFICE ROOFS, HVAC SYSTEM, EXISTING UTILITIES ATTACHED TO STEEL BEAMS AND GIRTS (I.E., FIRE, ELECTRICAL, ETC.) AND STORAGE RACKS.
2. VERTICAL SURFACES – STEEL COLUMNS, WINDOW FRAMES, DOOR JAMBS/GUIDES, BEAMS, PURLINS, AND DIAGONAL BRACES.

REV	DATE	DESCRIPTION	BY	APPROVED
STATE OF HAWAII DEPARTMENT OF TRANSPORTATION HARBORS DIVISION				
JOB TITLE ASBESTOS CONTAINING DUST CLEANUP AND LIMITED VISUAL ASSESSMENT, PORT ALLEN HARBOR KAUAI, HAWAII				
SHEET TITLE SECTIONS				
DESIGNED BY: LY	JOB NUMBER S70150			SHEET 5 5 OF 5 SHTS.
DRAWN BY: EL				
CHECKED BY: YZ				
DATE: FEB 2023				
SCALE: AS SHOWN				