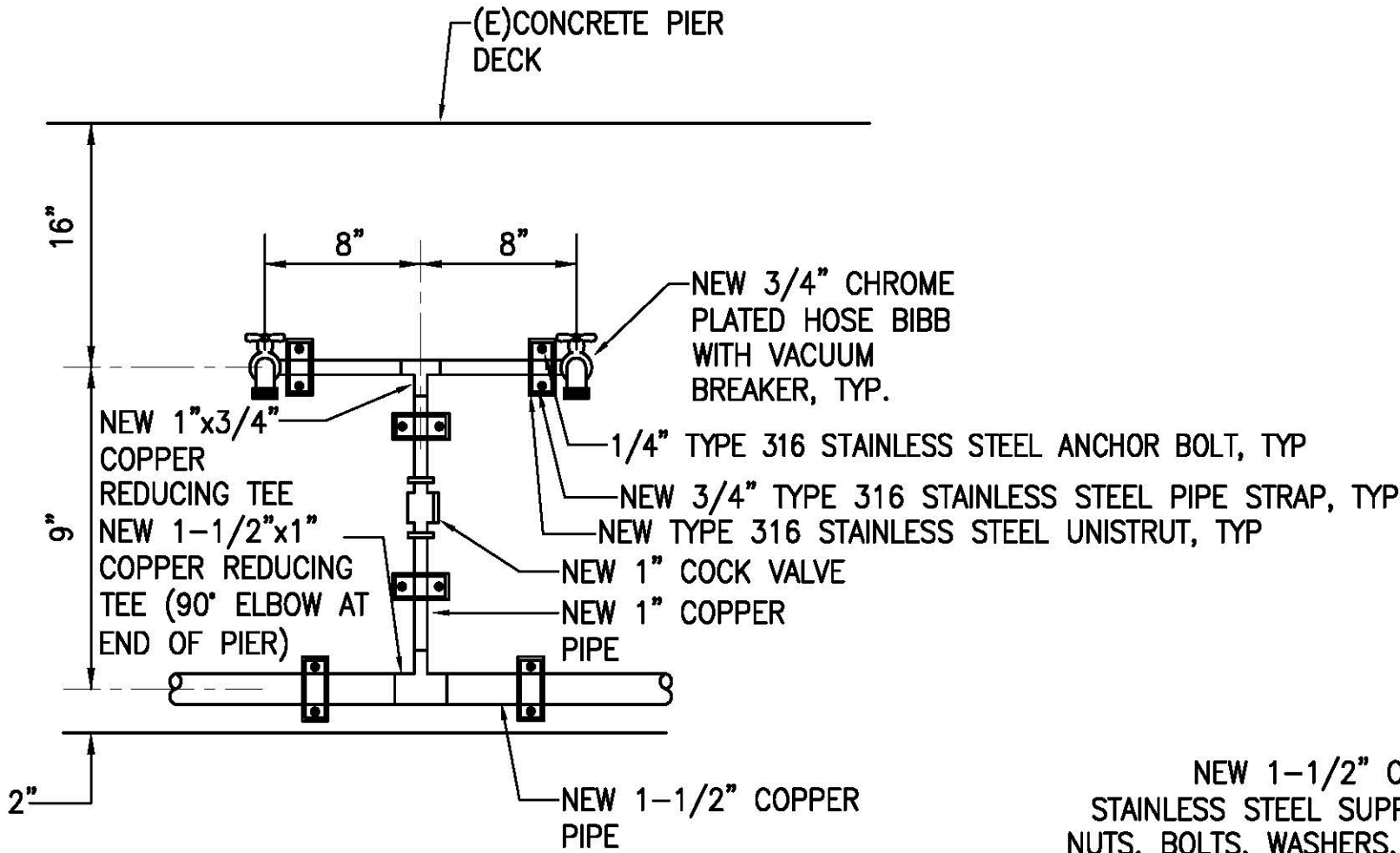


GENERAL NOTES:

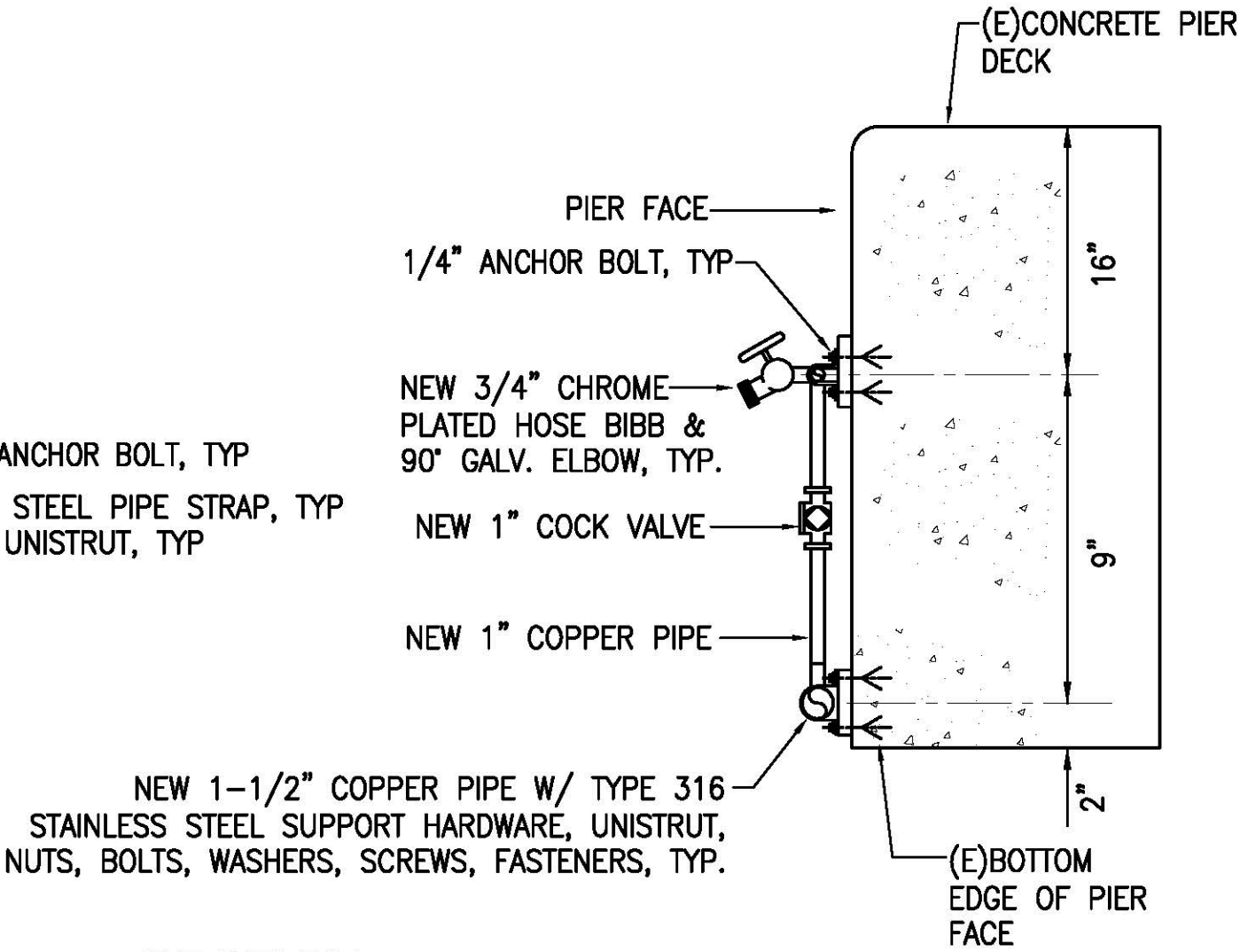
1. CONFORM TO ALL REQUIREMENTS OF THE 2018 IBC, 2018 UPC, 2018 IECC, AND 2018 NFPA 1 CODES OF THE STATE OF HAWAII, STATE OF HAWAII HEALTH REGULATIONS, FIRE DEPARTMENT REGULATIONS, MANUFACTURER'S RECOMMENDATIONS, AND OTHER APPLICABLE REGULATIONS.
2. EXAMINE ALL PROJECT PLANS AND BECOME FAMILIAR WITH ALL EXISTING CONDITIONS AND THE EXTENT OF REMOVAL, RELOCATION, AND/OR NEW WORK PRIOR TO BIDDING. NOTIFY AND COORDINATE WITH THE CONTRACTING OFFICER FOR ANY MAJOR DEVIATIONS OR DISCREPANCIES DISCOVERED IN THE PLANS AND SPECIFICATIONS DUE TO UNFORESEEN OR VARYING FIELD CONDITIONS.
3. INSTALLATION SHALL BE GUARANTEED TO BE FREE FROM DEFECTS FOR ONE YEAR FROM FINAL DATE OF ACCEPTANCE OF THE PROJECT AS A WHOLE.
4. CONTRACTOR SHALL VERIFY ALL FIELD CONDITIONS PRIOR TO BID AND CONSTRUCTION.
5. CONTRACTOR SHALL FIELD VERIFY ALL EXISTING LINE SIZES, CONDITIONS, AND INVERTS PRIOR TO BID AND CONSTRUCTION.
6. THE DRAWINGS AND SPECIFICATIONS ARE INTENDED TO COVER THE COMPLETE INSTALLATION OF SYSTEMS TO FUNCTION AS DESCRIBED AND SPECIFIED. THE OMISSION OF REFERENCE TO ANY NECESSARY ITEM OF LABOR OR MATERIAL SHALL NOT RELIEVE THE CONTRACTOR FROM PROVIDING SUCH LABOR AND MATERIAL AT NO ADDITIONAL COST TO THE STATE.
7. DRAWING FILES WILL NOT BE AVAILABLE TO CONTRACTORS FOR SHOP DRAWINGS OR ANY OTHER PURPOSE.
8. CAULK ALL PENETRATIONS WATERTIGHT. PROVIDE ALL CUTTING, PATCHING, AND RESTORING OF EXISTING SURFACES TO MATCH ORIGINAL SURFACE FINISHES. SPOT PAINT TO MATCH EXISTING SURFACES/COLOR.
9. PREPARE SHOP DRAWINGS, QUANTITY AS PER SPECS, SUBMITTED TO THE CONTRACTING OFFICER FOR APPROVAL PRIOR TO THE START OF WORK. NO REPRODUCTIONS OF ANY KIND OF THE CONTRACT DOCUMENTS SHALL BE ACCEPTABLE AS SHOP DRAWINGS. PROVIDE ONE SET OF REPRODUCIBLE AS-BUILT DRAWINGS SHOWING THE ACTUAL INSTALLED CONDITIONS AND SUBMIT TO THE STATE UPON COMPLETION OF WORK.
10. DRAWINGS ARE DIAGRAMMATIC IN NATURE AND DO NOT SHOW EVERY EXACT DETAIL OF PIPING. PROVIDE OFFSETS AS NECESSARY TO AVOID LOCAL OBSTRUCTIONS OR INTERFERENCES WITH OTHER TRADES. REVIEW ALL PIPING RUNS PRIOR TO FABRICATION AND IMMEDIATELY NOTIFY THE CONTRACTING OFFICER OF ANY INTERFERENCES AND/OR LACK OF ADEQUATE CLEARANCES.
11. SHOULD PROJECT CONDITIONS REQUIRE REARRANGEMENT OF WORK, MARK SUCH CHANGES ON THE AS-BUILT DRAWINGS. IF THESE CHANGES REQUIRE ALTERNATE METHODS TO THOSE APPROVED BY THE CONTRACT DOCUMENTS, SUBMIT SHOP DRAWINGS SHOWING THE PROPOSED ALTERNATE METHODS TO THE CONTRACTING OFFICER FOR REVIEW/APPROVAL PRIOR TO PROCEEDING WITH WORK.
12. CONTRACTOR SUBMITTALS ARE TO BE PROVIDED AS A COMPLETE PACKAGE. PIECEMEAL SUBMITTALS WILL NOT BE REVIEWED AND RETURNED.
13. COORDINATE ALL WORK WHICH WILL AFFECT AREAS NOT IN CONTRACT WITH THE CONSTRUCTION ENGINEER. SCHEDULE OFF-HOUR WORK WHEN REQUIRED TO MINIMIZE DISRUPTIONS.
14. ALL STEEL SHALL BE HOT DIPPED GALVANIZED. GALVANIZED STEEL EXPOSED TO WEATHER SHALL HAVE WEATHER PROOF PAINT TO MATCH SURFACES. PROVIDE TWO EXTRA COATS OF EPOXY PAINT.
15. PROVIDE ACCESS TO ALL ITEMS UNDER THIS SECTION REQUIRING SERVICING, INSPECTION, MAINTENANCE, AND ADJUSTMENT.
16. COORDINATE ALL WORK WITH OTHER TRADES TO AVOID INTERFERENCES AND DELAYS.
17. LOCATE ALL UTILITY LINES OR OTHER INTERFERENCES IN AREAS OF PROPOSED WORK PRIOR TO START OF WORK. REPAIR OR PAY FOR ALL DAMAGES TO EXISTING UTILITIES.
18. ALL PENETRATIONS THRU EXISTING WALLS, CEILINGS, FOUNDATIONS, AND FLOOR SLABS MUST BE IN TOTAL COMPLIANCE WITH ARCHITECTURAL/STRUCTURAL PROCEDURES AND DRAWINGS.
19. COORDINATE ALL SWITCH LOCATIONS WITH HARBOR OFFICE STAFF PRIOR TO INSTALLATION TO AVOID INTERFERENCES WITH PAINTING, BULLETIN BOARDS, FURNITURE, ETC. ANY ITEM NOT PROPERLY COORDINATED SHALL BE RELOCATED AT NO ADDITIONAL COST TO THE STATE.
20. ALL EXTERIOR NUTS, BOLTS, SCREWS, WASHERS, FASTENERS, SUPPORTS STRAPS, ETC. SHALL BE TYP 316 STAINLESS STEEL.
21. PROVIDE DIELECTRIC UNIONS OR SEPARATIONS AT ALL DISSIMILAR METALS AS REQUIRED. PROVIDE UNIONS AFTER ALL SHUTOFF VALVES.

MECHANICAL LEGEND		
SYMBOL	ABBRV	DESCRIPTION
----	CW	COLD WATER
	(E)	EXISTING
C+	HB	HOSE BIBB
	(N)	NEW
	POC	POINT OF CONNECTION
	POR	POINT OF REMOVAL
	(R)	REMOVE
⊗	SOV	SHUT OFF VALVE
┌		STUBOUT
	TYP	TYPICAL
	W/	WITH

NOTE: CONTRACTOR SHALL FIELD VERIFY AND ADJUST HOSE BIBB AND COPPER PIPING HEIGHT TO AVOID POTENTIAL DAMAGE FROM COMMERCIAL BOAT BOARDING RAMP WHEELS. PROVIDE DIELECTRIC UNIONS OR SEPARATIONS AT ALL DISSIMILAR METALS AS REQUIRED.



FRONT ELEVATION



SECTION

1 NEW TYPICAL HOSE BIBB DETAILS
M-1 SCALE: NOT TO SCALE

<div><div><div>ROSS R. TANAKA</div><div>LICENSED PROFESSIONAL ENGINEER</div><div>No. 9301-M</div><div>HAWAII, U.S.A.</div></div><div><div>THIS WORK WAS PREPARED BY ME OR UNDER MY SUPERVISION</div><div>EXP 4-30-24</div><div></div><div>MECHANICAL ENTERPRISE, INC.</div></div></div>					
	REVISION	DATE	DESCRIPTION	BY	APPROVED
	STATE OF HAWAII DEPARTMENT OF TRANSPORTATION HARBORS DIVISION				
	JOB TITLE FENDER AND WATERLINE REPAIRS AT PORT ALLEN, KAUAI, HAWAII				
	SHEET TITLE GENERAL NOTES AND DETAILED DRAWING				
	DESIGNED BY: MEI		JOB NUMBER S70145		SHEET M-1 14 of 19 SHTS.
	DRAWN BY: MEI				
	CHECKED BY: RRT				
	DATE: 04/2023				
	SCALE: AS SHOWN				