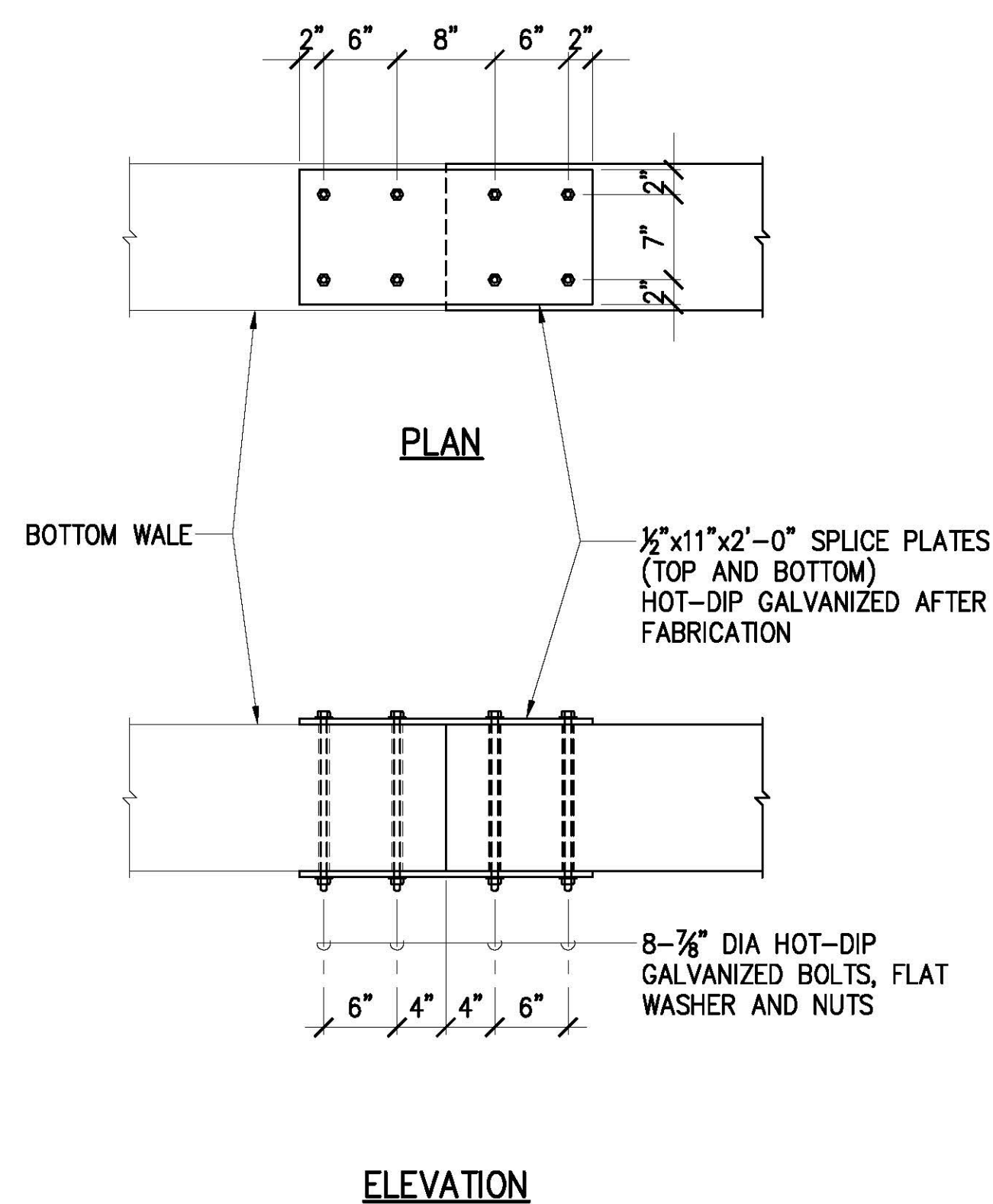


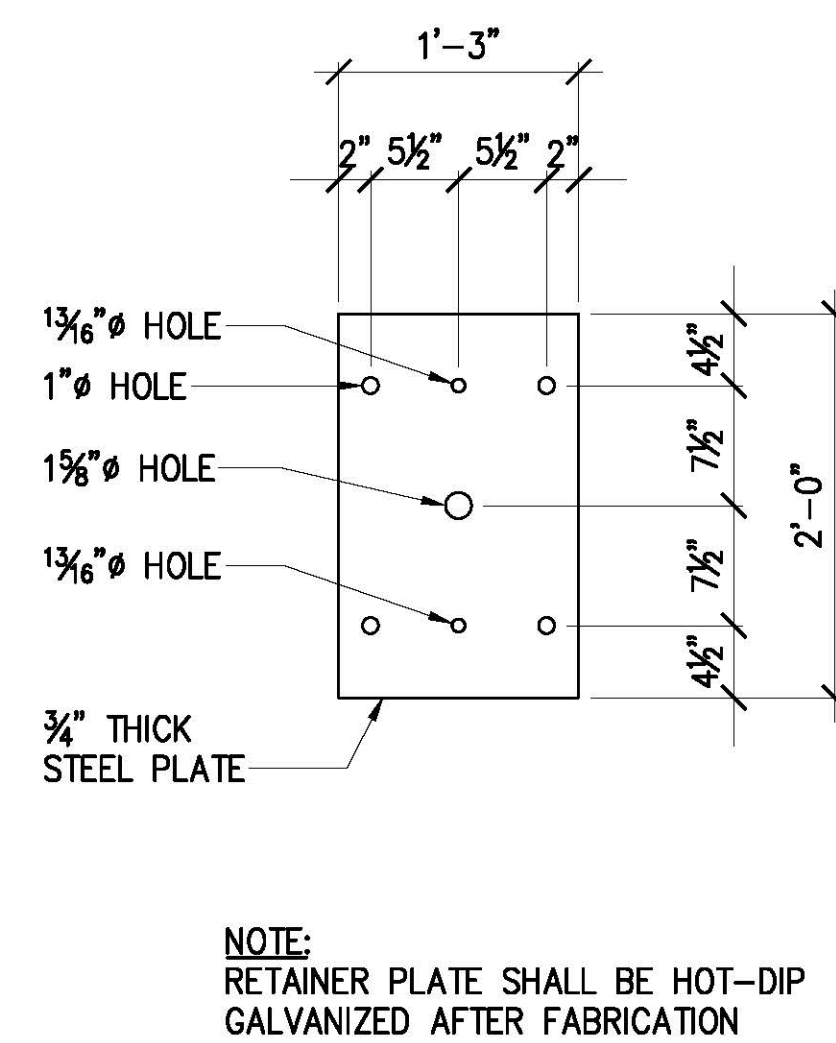
NOTES:

1. FOR CLARITY TIMBER MEMBERS OF FENDER SYSTEM NOT SHOWN.
2. CORBEL REPAIRS SHALL BE PERFORMED PRIOR TO INSTALLING BOTTOM WALE.
3. FRONT, TOP AND BOTTOM SURFACES SHALL BE BUILT UP TO THEIR ORIGINAL SURFACE. CONCRETE REPAIRS ON THE SIDES SHALL BE BUILT UP TO PROVIDE MIN 3" COVER AND TO FACILITATE REPAIR WORK.
4. MATCH ALL EXISTING CHAMFERS AND FINISHES.
5. PAY AREA SHALL BE THE TOTAL REPAIRED AREA ON ALL CORBEL FACES.
6. LOCATION OF CORBEL SPALLS ARE NOT SHOWN ON PLANS AND SHALL BE DETERMINED AFTER REMOVAL OF THE EXISTING FENDER SYSTEM.

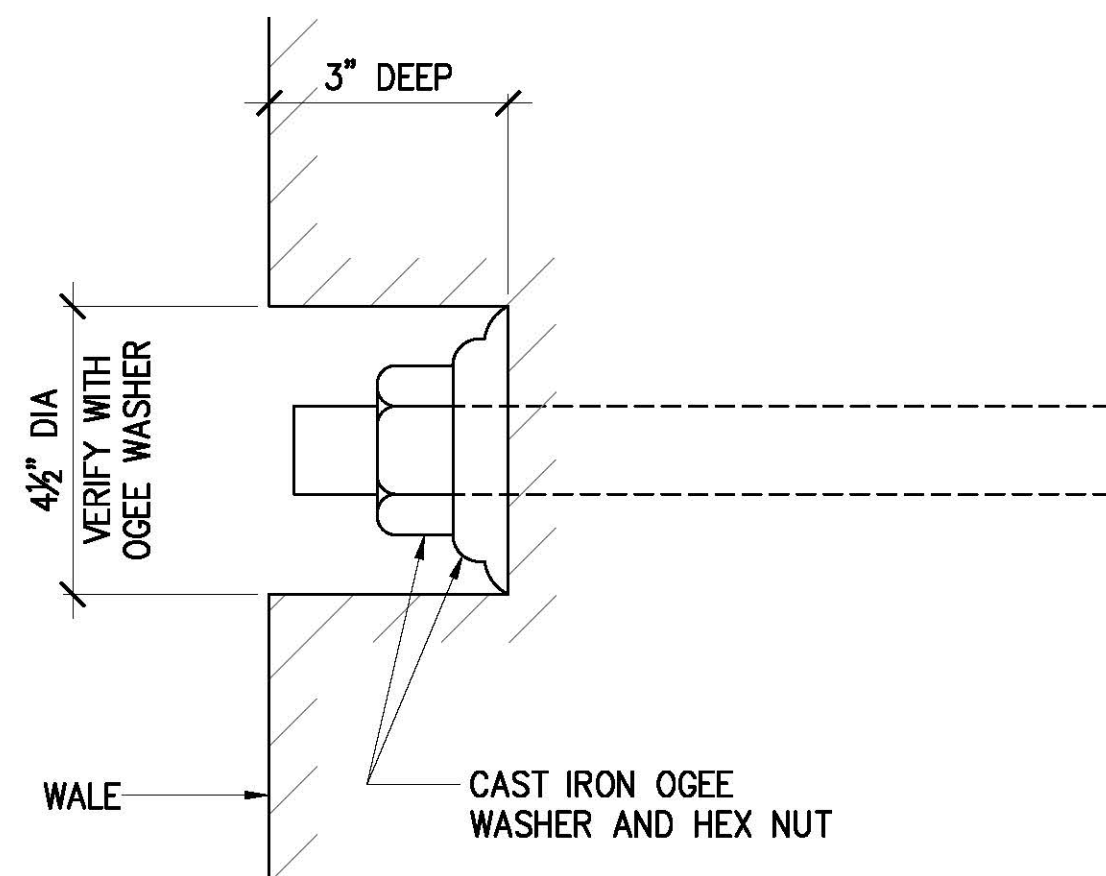
1 BENT CORBEL SPALL REPAIR DETAIL
S-8 SCALE: 1" = 1'-0"



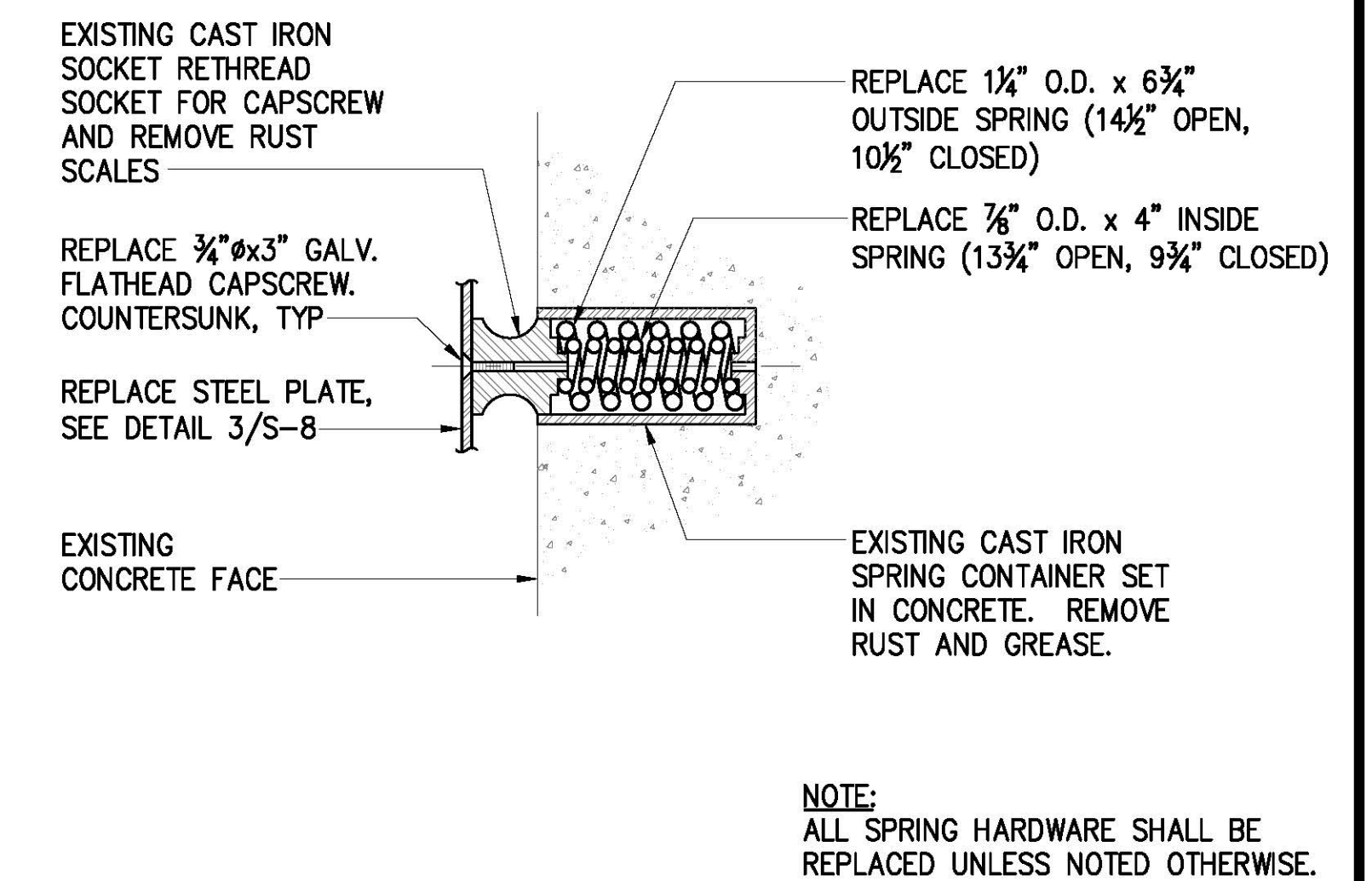
2 BOTTOM WALE SPLICE DETAIL
S-8 SCALE: 1" = 1'-0"



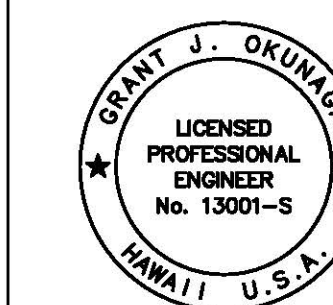
3 RETAINER PLATE DETAIL
S-8 SCALE: 1" = 1'-0"



4 TYPICAL COUNTERBORE DETAIL
S-8 NOT TO SCALE



5 SPRING ASSEMBLY DETAIL
S-8 SCALE: 1" = 1'-0"



THIS WORK WAS PREPARED BY ME
OR UNDER MY SUPERVISION
EXP. 4-30-24
MKE ASSOCIATES LLC

REVISION	DATE	DESCRIPTION	BY	APPROVED
STATE OF HAWAII DEPARTMENT OF TRANSPORTATION HARBORS DIVISION				
JOB TITLE FENDER AND WATERLINE REPAIRS AT PORT ALLEN, KAUAI, HAWAII				
SHEET TITLE CORBEL AND FENDER REPAIR DETAILS				
DESIGNED BY: GO		JOB NUMBER S70145		SHEET S-8 10 OF 19 SHTS.
DRAWN BY: DL				
CHECKED BY: GM				
DATE: 04/2023				
SCALE: AS SHOWN				