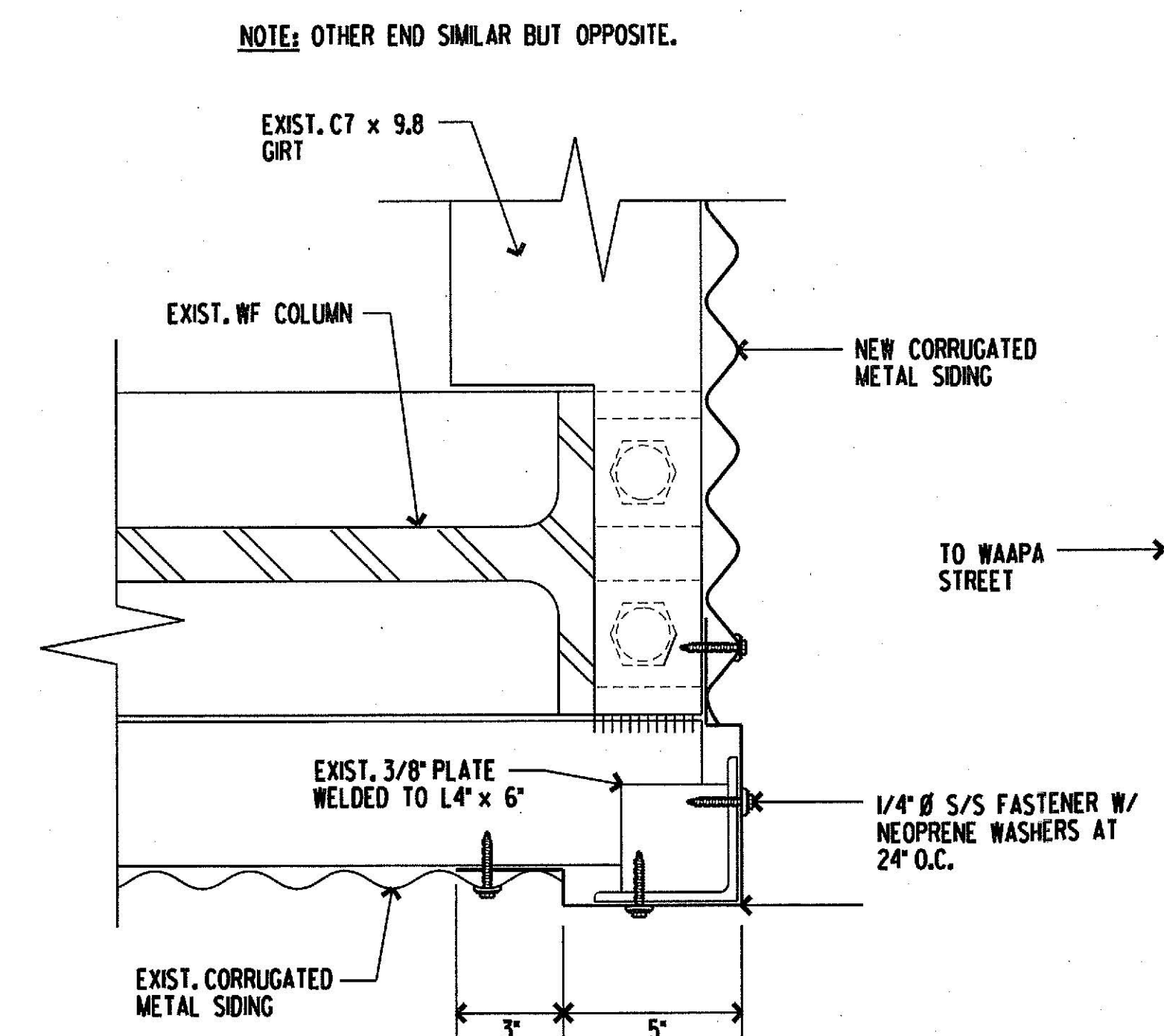


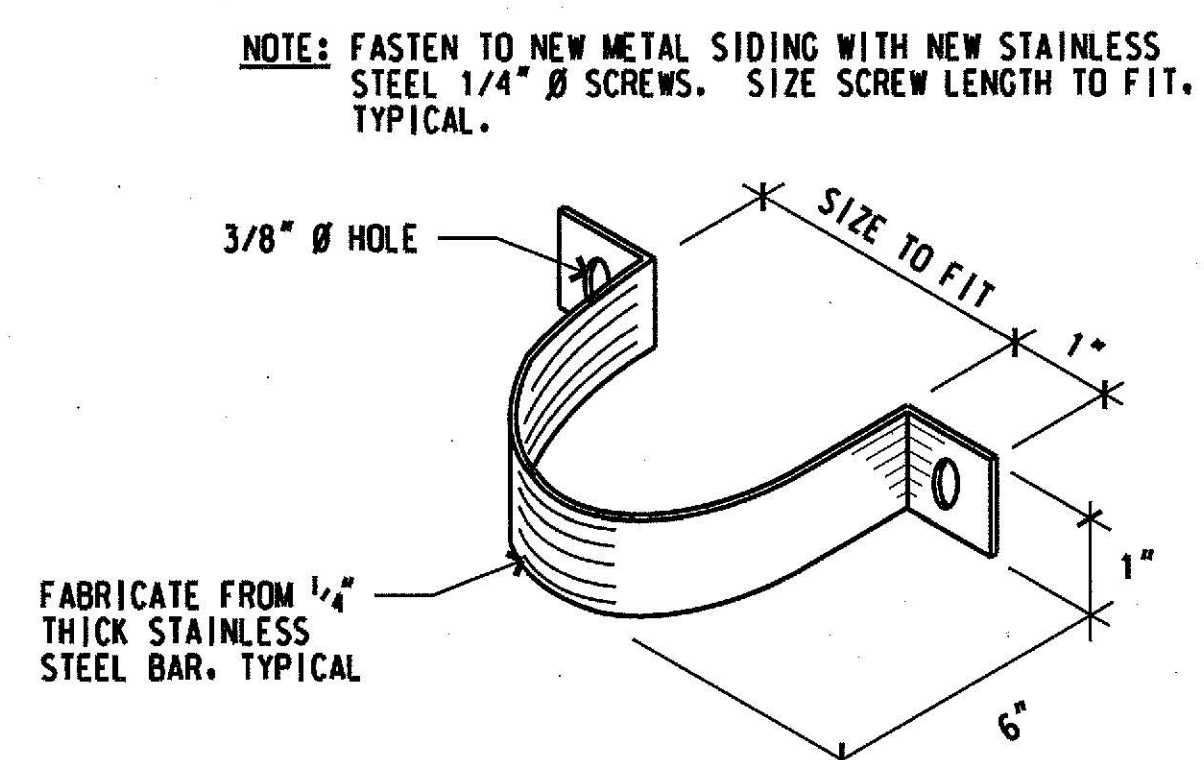
TYPICAL UPPER SHED WALL SECTION

SCALE: 1" = 1' - 0"



NEW CORNER FLASHING DETAIL

SCALE: 3" = 1' - 0"



NEW DOWNSPOUT STRAP DETAIL

NOT TO SCALE

REV	DATE	DESCRIPTION	BY	APPROVED
STATE OF HAWAII DEPARTMENT OF TRANSPORTATION HARBORS DIVISION				
JOB TITLE REPLACE SIDING AT PIER 2 SHED NAWILIWILI HARBOR, KAUAI, HAWAII				
SHEET TITLE UPPER WALL SECTION, NEW CORNER FLASHING AND DOWNSPOUT STRAP DETAILS				
SUBMITTED BY: <i>David M. M...</i>			RECOMMENDED BY: <i>[Signature]</i>	
SECTION HEAD			ENGINEERING PROGRAM MANAGER	
DESIGNED BY: DCA	APPROVED BY: <i>[Signature]</i>		SHEET	
DRAWN BY: DCA	for HARBORS ADMINISTRATOR		2	
CHECKED BY: AF	JOB NUMBER		2 OF 2 SHTS.	
DATE: JULY 2022	H.C. 70144			
SCALE: AS SHOWN				
FOR QUESTIONS, CONTACT HARBORS ENGINEERING MAINTENANCE AT 587-1877				

H.C. 70144 - REPLACE SIDING AT PIER 2 SHED, NAWILIWILI HARBOR, KAUAI, HAWAII