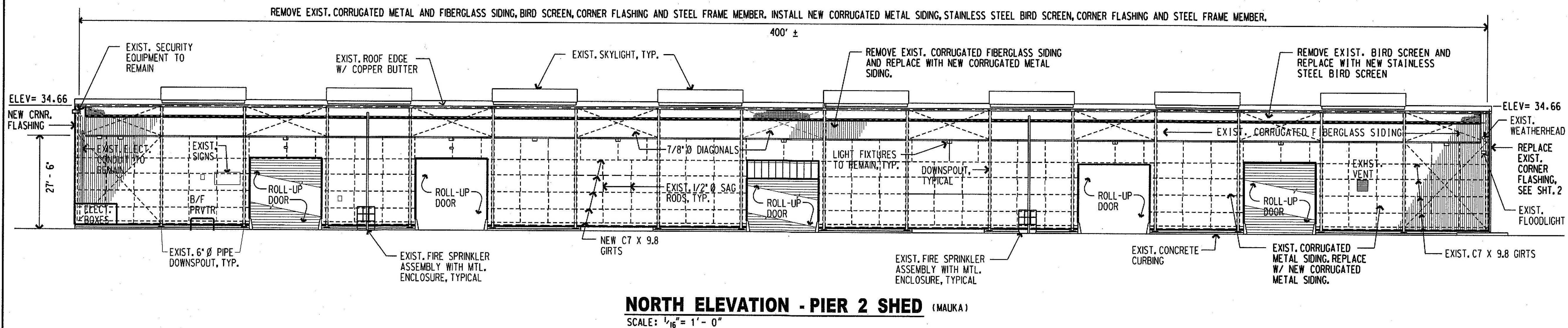
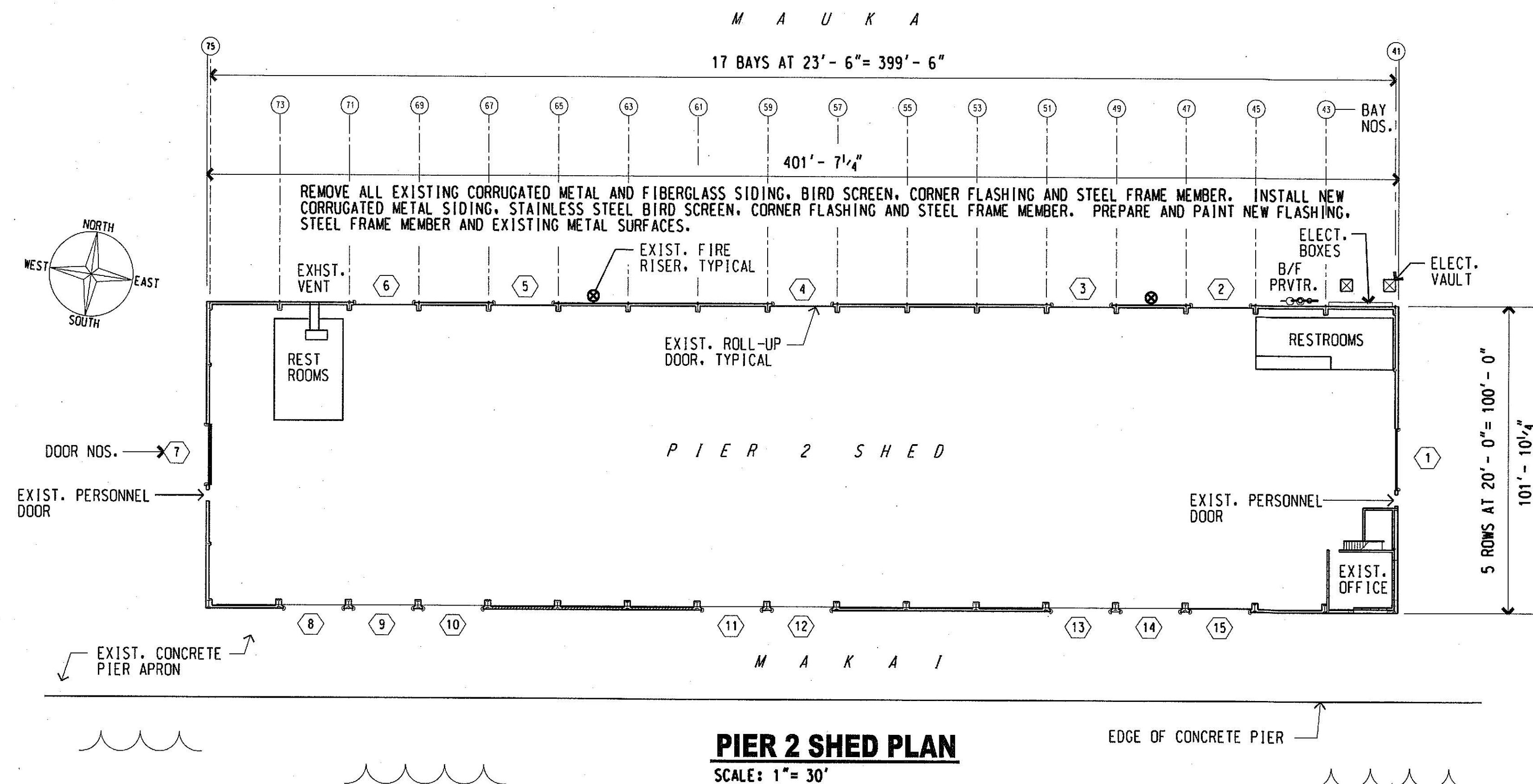
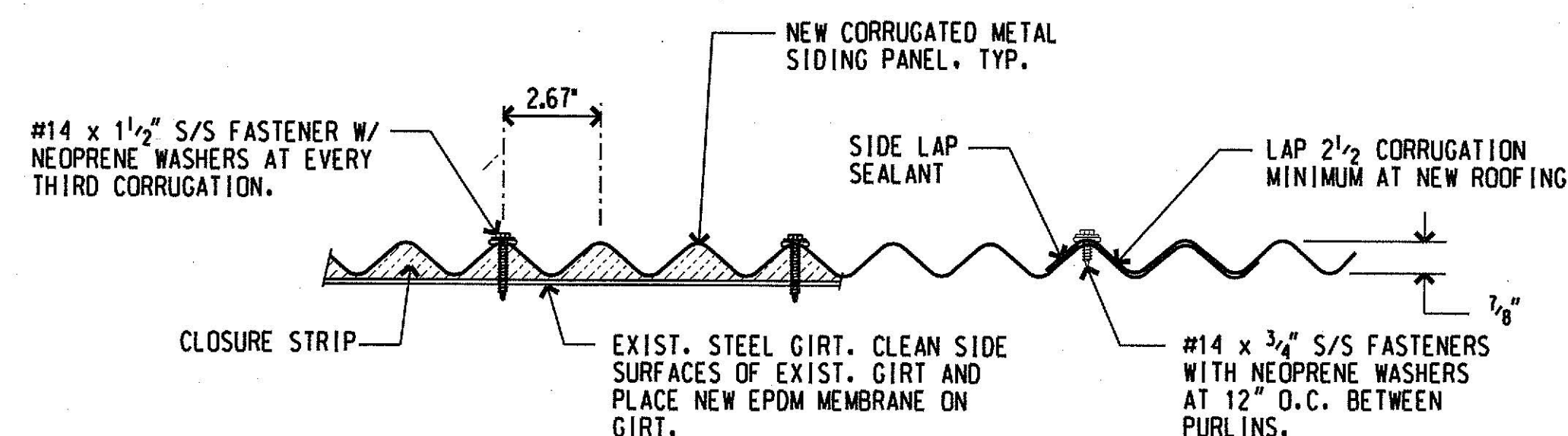


LOCATION MAP - NAWILIWILI HARBOR



NORTH ELEVATION - PIER 2 SHED (MAUKA)
SCALE: 1/16" = 1' - 0"

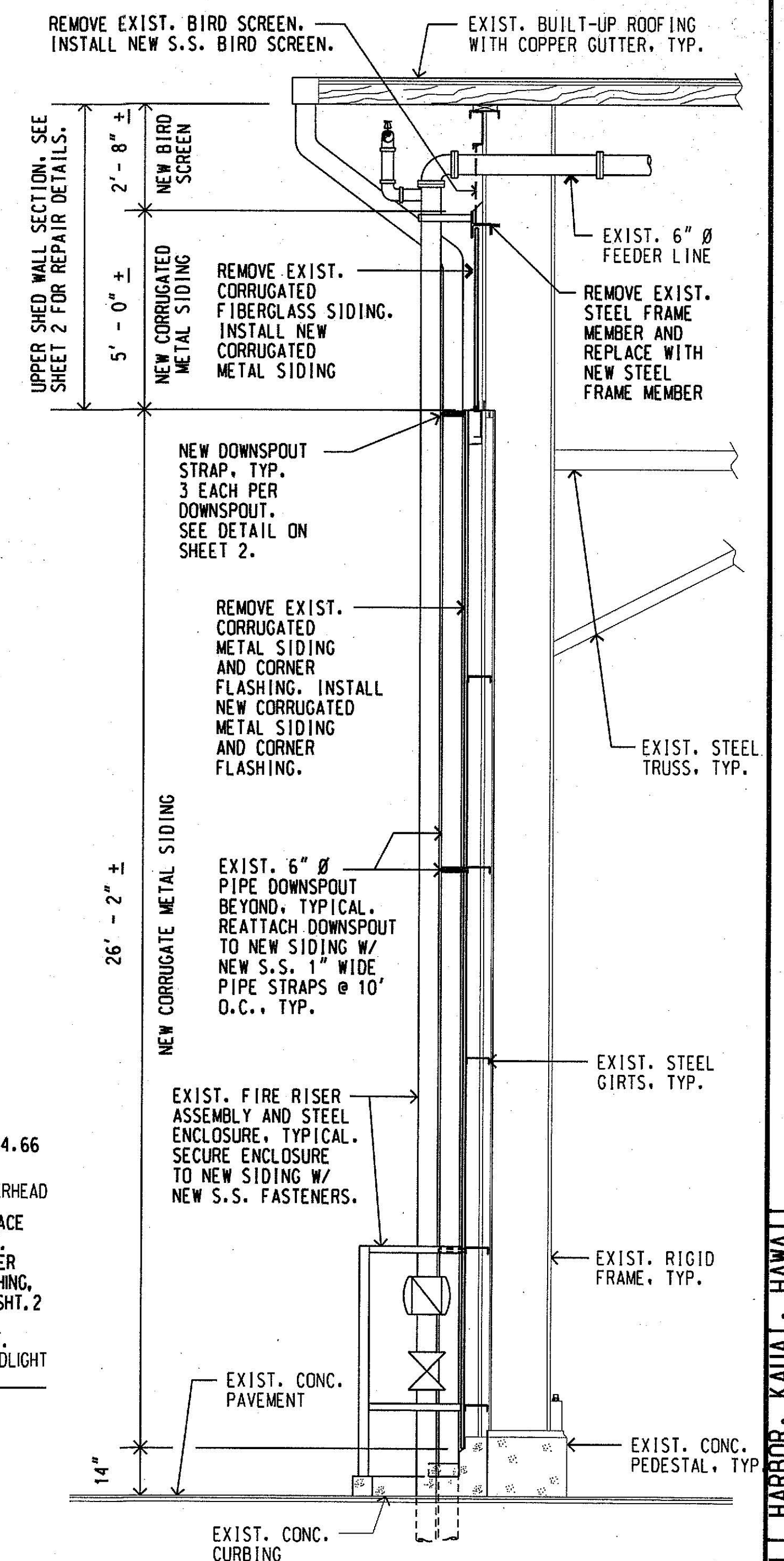
NOTE: PLACE NEW EPDM MEMBRANE ON NEW STEEL FRAME MEMBER PRIOR TO INSTALLING NEW SIDING PANEL.



NEW CORRUGATED SIDING DETAIL
SCALE: 3" = 1' - 0"

GENERAL NOTES:

1. CONTRACTOR SHALL VERIFY CONDITIONS AND DIMENSIONS IN THE FIELD PRIOR TO ORDERING MATERIALS.
2. CONTRACTOR SHALL EXERCISE CAUTION TO PREVENT DAMAGE TO EXISTING STRUCTURES, UTILITIES AND EQUIPMENT IN THE PROJECT AREA.
3. ALL WORK SHALL BE COORDINATED WITH THE HARBORS DIVISION KAUAI DISTRICT MANAGER AND THE CONSTRUCTION ENGINEER.
4. ALL STRUCTURES AND PORTIONS OF STRUCTURES SHOWN ON THE PLAN ARE EXISTING UNLESS SPECIFICALLY NOTED. EXISTING CONDITIONS ARE BASED ON THE BEST AVAILABLE INFORMATION. NO GUARANTEE IS GIVEN THAT THEY ARE MORE THAN APPROXIMATELY CORRECT.
5. THE CONTRACTOR WILL NOT BE ALLOWED TO WORK WHEN A PASSENGER CRUISE VESSEL OR FUEL BARGE ARE BERTHED AT THE PIER 2 SHED FACILITY. THE EXACT SCHEDULING OF THE WORK AND RESTRICTIONS ON THE CONTRACTOR'S ACTIVITIES WILL BE ESTABLISHED AT THE PRE-CONSTRUCTION MEETING.
6. THE CONTRACTOR SHALL COMPLY WITH THE CLEAN WATER ACT AND THE STATE HARBORS DIVISION STORMWATER MANAGEMENT PROGRAM. NO POLLUTANT IS ALLOWED TO BE DISCHARGED DIRECTLY OR INDIRECTLY THROUGH THE HARBORS SMALL MS4 OR OTHER POTENTIAL PATHWAYS INTO HARBOR WATERS.
7. THE CONTRACTOR SHALL SUBMIT A SITE-SPECIFIC BEST MANAGEMENT PRACTICES (BMPs) PLAN AND HEALTH & SAFETY PLAN TO HARBORS DIVISION CONSTRUCTION ENGINEER PRIOR TO THE START OF ANY CONSTRUCTION WORK.
8. IN CASE OF RELEASE OF HAZARDOUS SUBSTANCE, OIL OR ENCOUNTER OF CONTAMINATED SOIL, THE CONTRACTOR SHALL NOTIFY THE APPROPRIATE FACILITY PERSONNEL, EMERGENCY RESPONSE AGENCIES, AND REGULATORY AGENCIES FOLLOWING NOTIFICATION PROCEDURES, AND SHALL NOTIFY THE HARBORS DIVISION CONSTRUCTION ENGINEER IMMEDIATELY (i.e., WITHIN 24 HOURS). CONTACT INFORMATION MUST BE IN LOCATIONS THAT ARE READILY ACCESSIBLE AND AVAILABLE.
9. THE CONTRACTOR SHALL NOTE THAT THE EXISTING STEEL FRAME MEMBER IS SUSPECTED OF CONTAINING LEAD PAINT. ALL LEAD PAINT ABATEMENT WORK SHALL BE PERFORMED IN STRICT ACCORDANCE WITH APPLICABLE EPA, OSHA AND DOSH RULES AND REGULATIONS.



TYPICAL SHED WALL SECTION
SCALE: 3/8" = 1' - 0"

REV	DATE	DESCRIPTION	BY	APPROVED
STATE OF HAWAII DEPARTMENT OF TRANSPORTATION HARBORS DIVISION				
JOB TITLE REPLACE SIDING AT PIER 2 SHED NAWILIWILI HARBOR, KAUAI, HAWAII				
SHEET TITLE SHED PLAN, ELEVATION, WALL SECTION, NEW SIDING DETAIL				
SUBMITTED BY: David Schubert		RECOMMENDED BY: [Signature]		
DESIGNED BY: DCA	SECTION HEAD	APPROVED BY: [Signature]		SHEET 1
DRAWN BY: DCA	CHECKED BY: AF	FOR HARBORS ADMINISTRATOR		
DATE: JULY 2022	SCALE: AS SHOWN	H.C. 70144		1 OF 2 SHEETS
FOR QUESTIONS, CONTACT HARBORS ENGINEERING MAINTENANCE AT 587-1877				

H.C. 70144 - REPLACE SIDING AT PIER 2 SHED, NAWILIWILI HARBOR, KAUAI, HAWAII