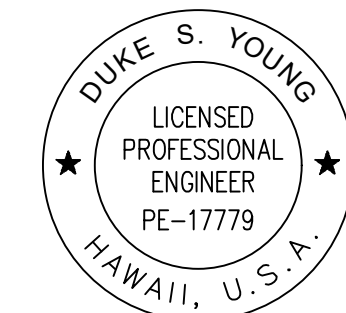


Airports Division
DEPARTMENT OF TRANSPORTATION
STATE OF HAWAII



Duke Young
DUKE YOUNG, PE
CIVIL ENGINEER

4/30/24
Expiration Date

DSGN.	DRWN.	CHKD.	APPD.
HF	HT	JB	DY

KEY PLAN / NOTES:

NO.	DATE	REVISIONS
-----	------	-----------

CONSTRUCTION DOCUMENTS

JULY 2022
DATE

PROJECT TITLE :

RELOCATE RUNWAY 3-21

AT
LIHUE AIRPORT
LIHUE, KAUAI, HAWAII

PROJECT NO.:

AK1031-14

SHEET TITLE:

TYPICAL PAVEMENT SECTIONS

DATE :

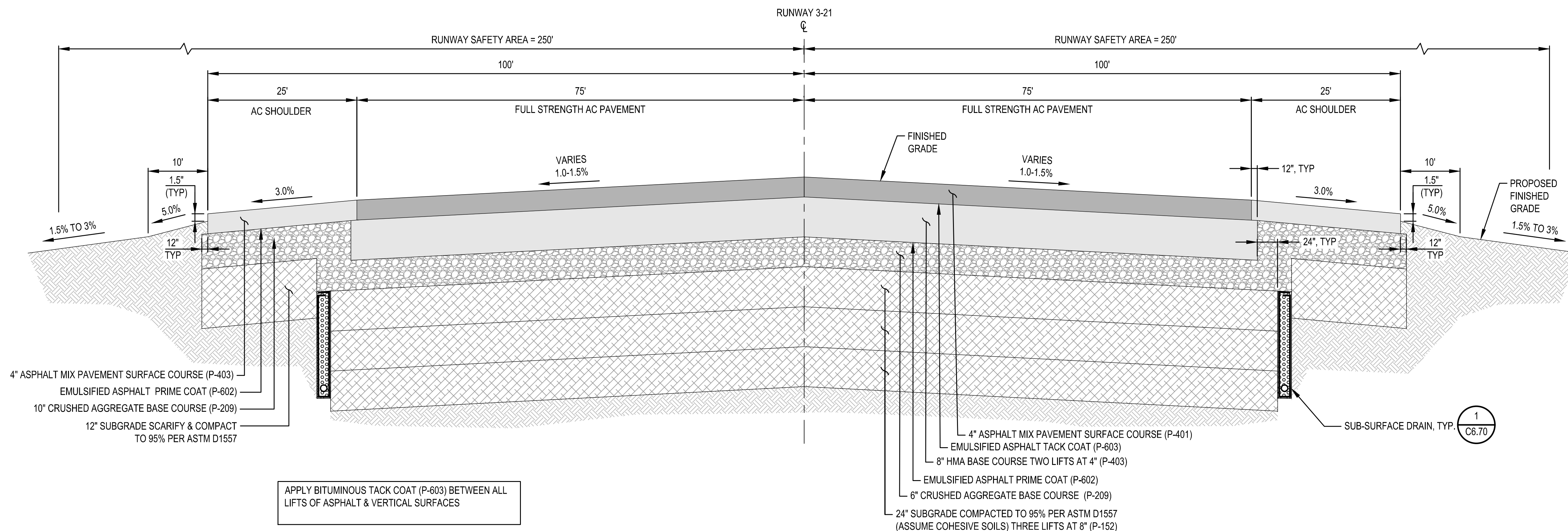
07/2022

SHEET :

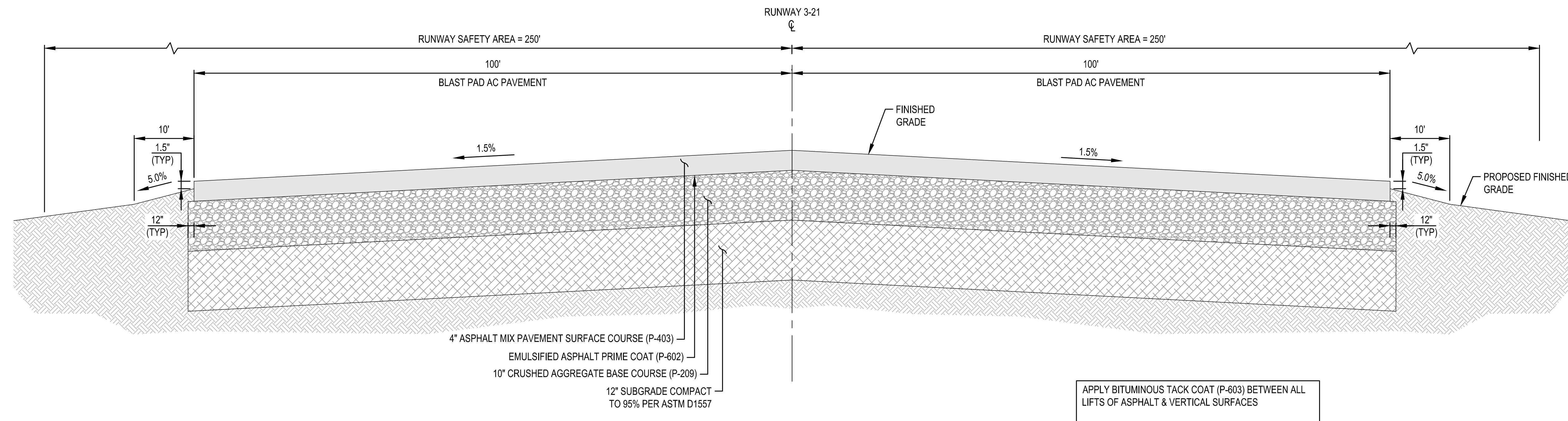
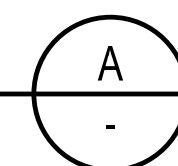
175 OF 376 SHEETS

DWG. NO.

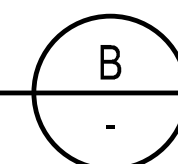
C4.50

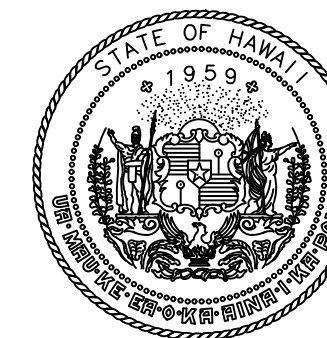
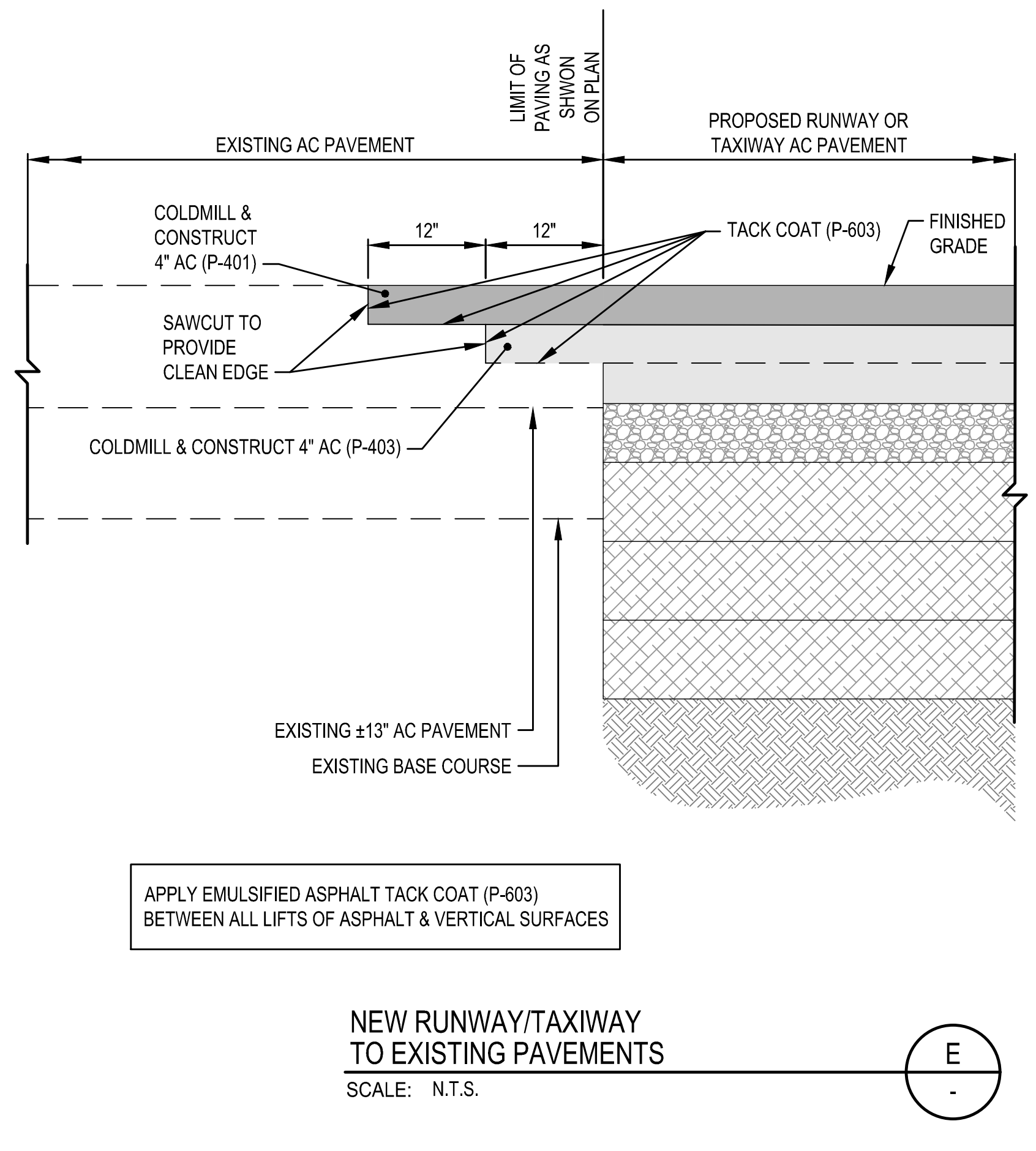
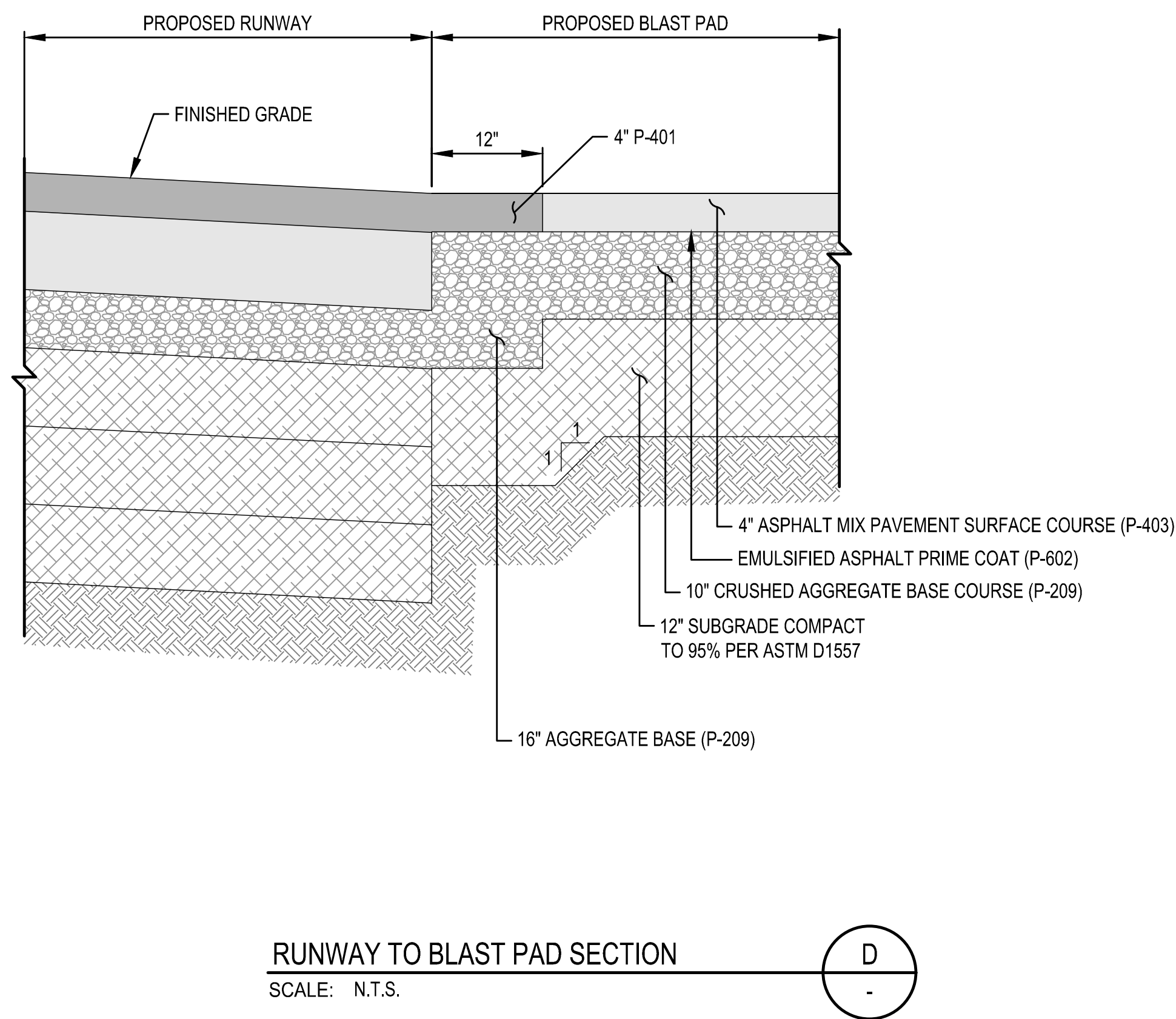
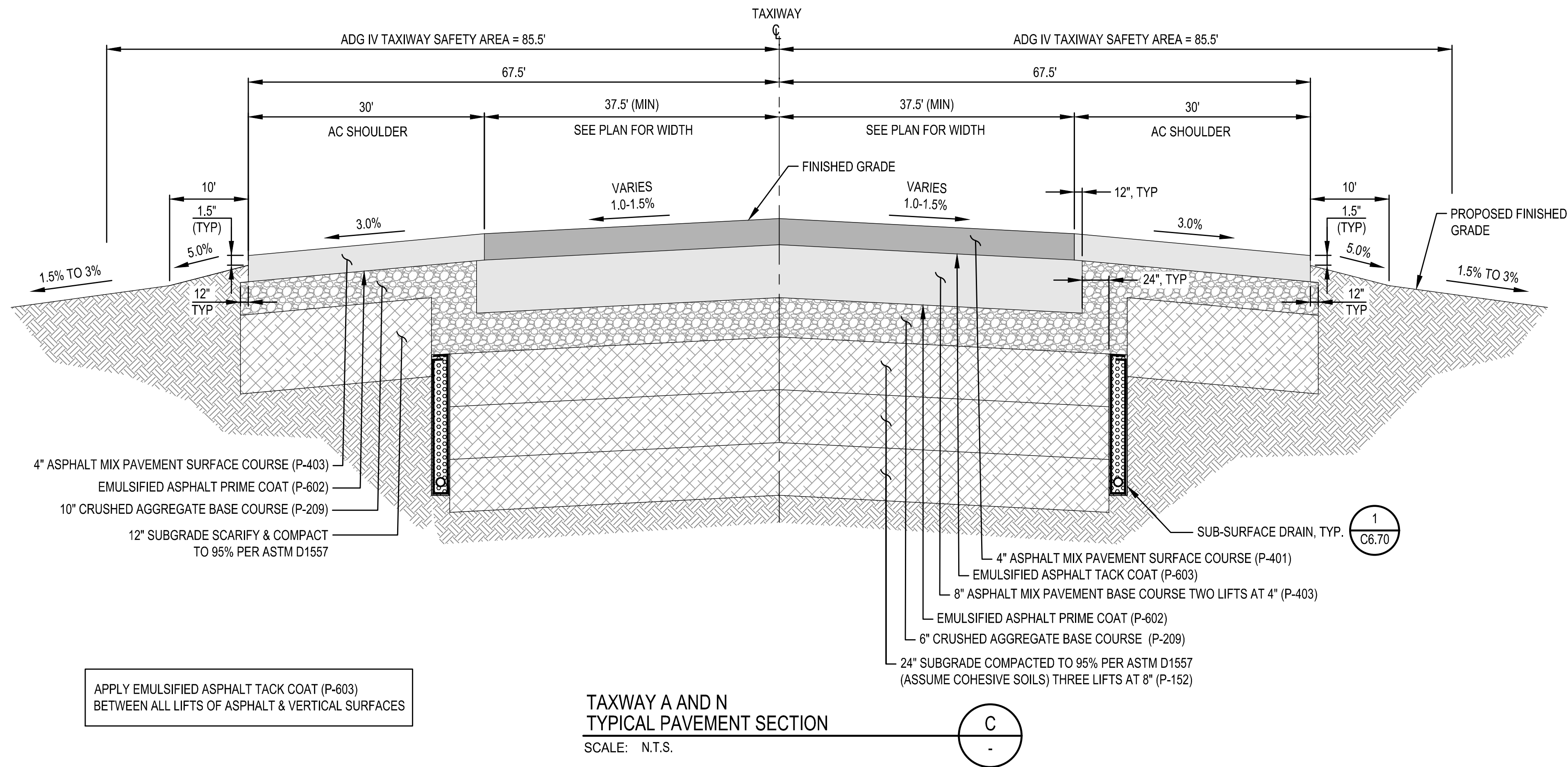


Runway 3-21
TYPICAL PAVEMENT SECTION
SCALE: N.T.S.

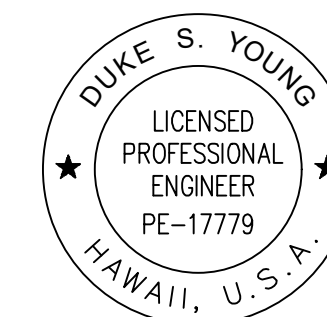


Blast Pad
TYPICAL PAVEMENT SECTION
SCALE: N.T.S.





Airports Division
DEPARTMENT OF TRANSPORTATION
STATE OF HAWAII



Duke Young
DUKE YOUNG, PE
CIVIL ENGINEER

4/30/24
Expiration Date

DSGN.	DRWN.	CHKD.	APPD.
HF	HT	JB	DY

KEY PLAN / NOTES:

NO.	DATE	REVISIONS
-----	------	-----------

CONSTRUCTION DOCUMENTS

JULY 2022
DATE

PROJECT TITLE :

RELOCATE
RUNWAY 3-21

AT
LIHUE AIRPORT
LIHUE, KAUAI, HAWAII

PROJECT NO.:

AK1031-14

SHEET TITLE:

TYPICAL PAVEMENT SECTIONS

DATE :	DWG. NO.
07/2022	C4.51
SHEET :	176 OF 376 SHEETS