

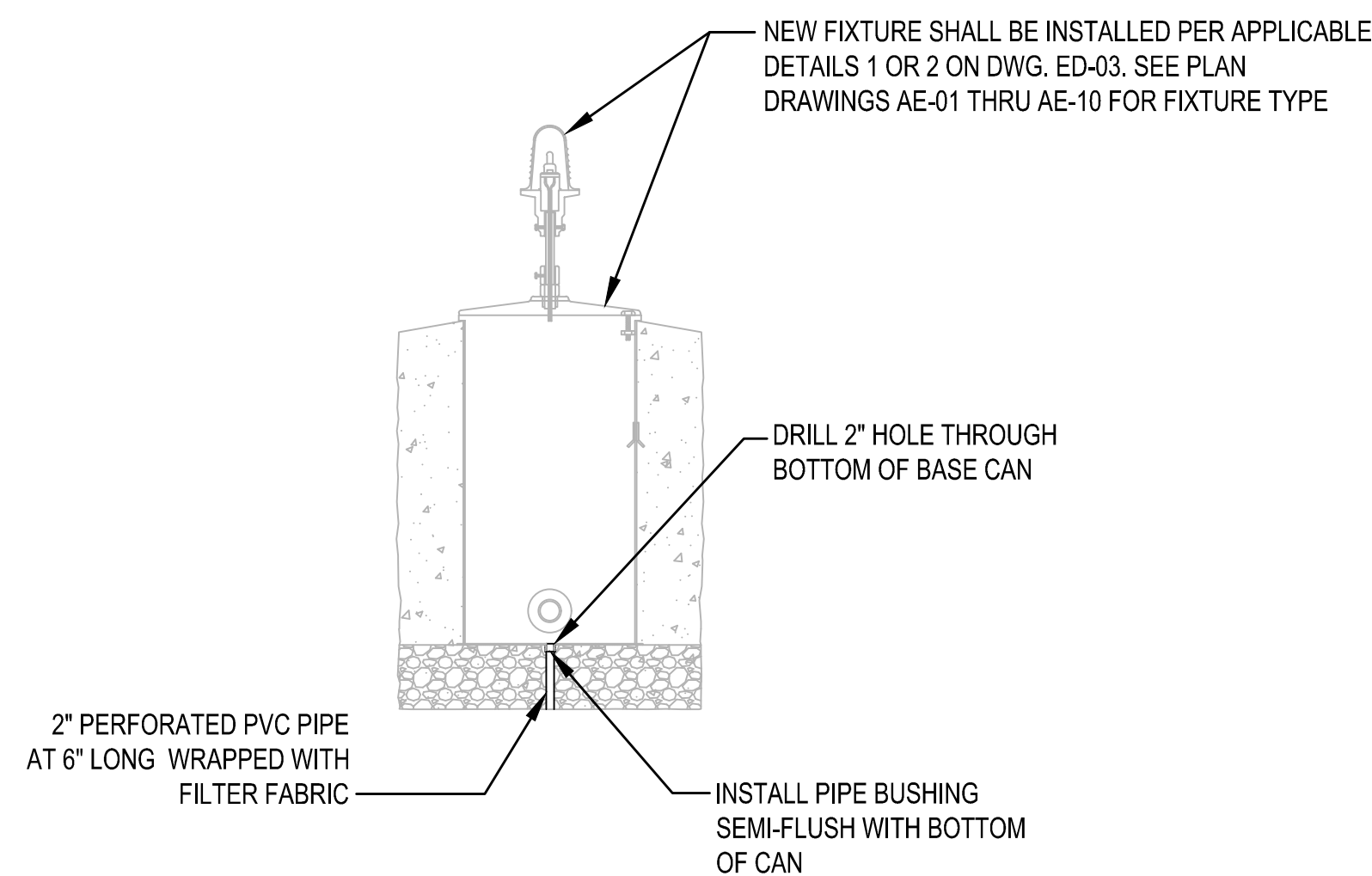
NOTES:

1. STANDARD HEIGHT IS 14" FOR ELEVATED EDGE LIGHTS.
2. NON-METALLIC BASE COVER SHALL BE ALUMINUM THREADED 1.5" DIAMETER FOR STANDARD ELEVATED EDGE LIGHT COUPLING.

**TYPICAL ELEVATED FIXTURE
ON EXISTING BASE CAN INSTALLATION**

SCALE: N.T.S.

1
E3.13



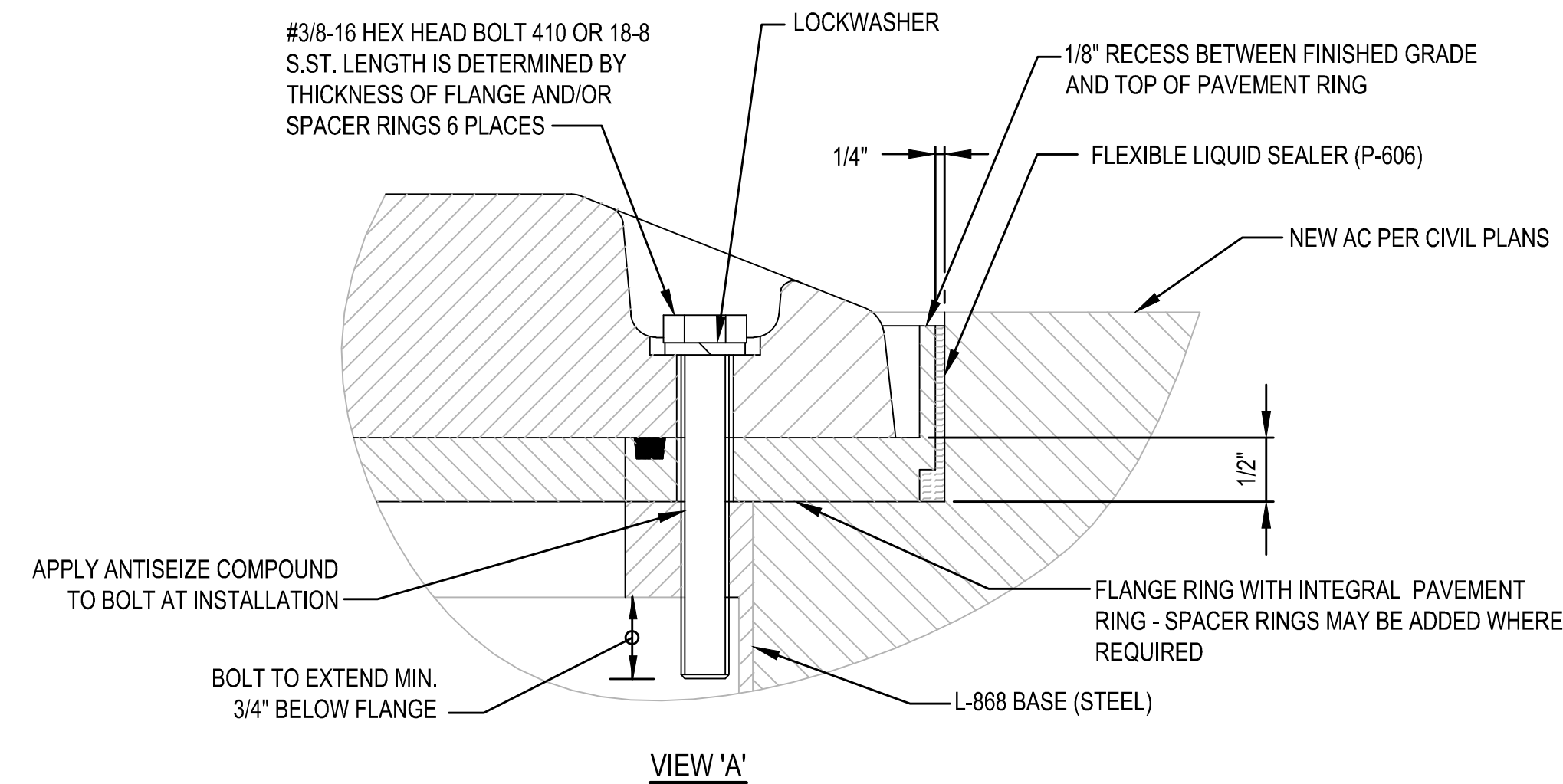
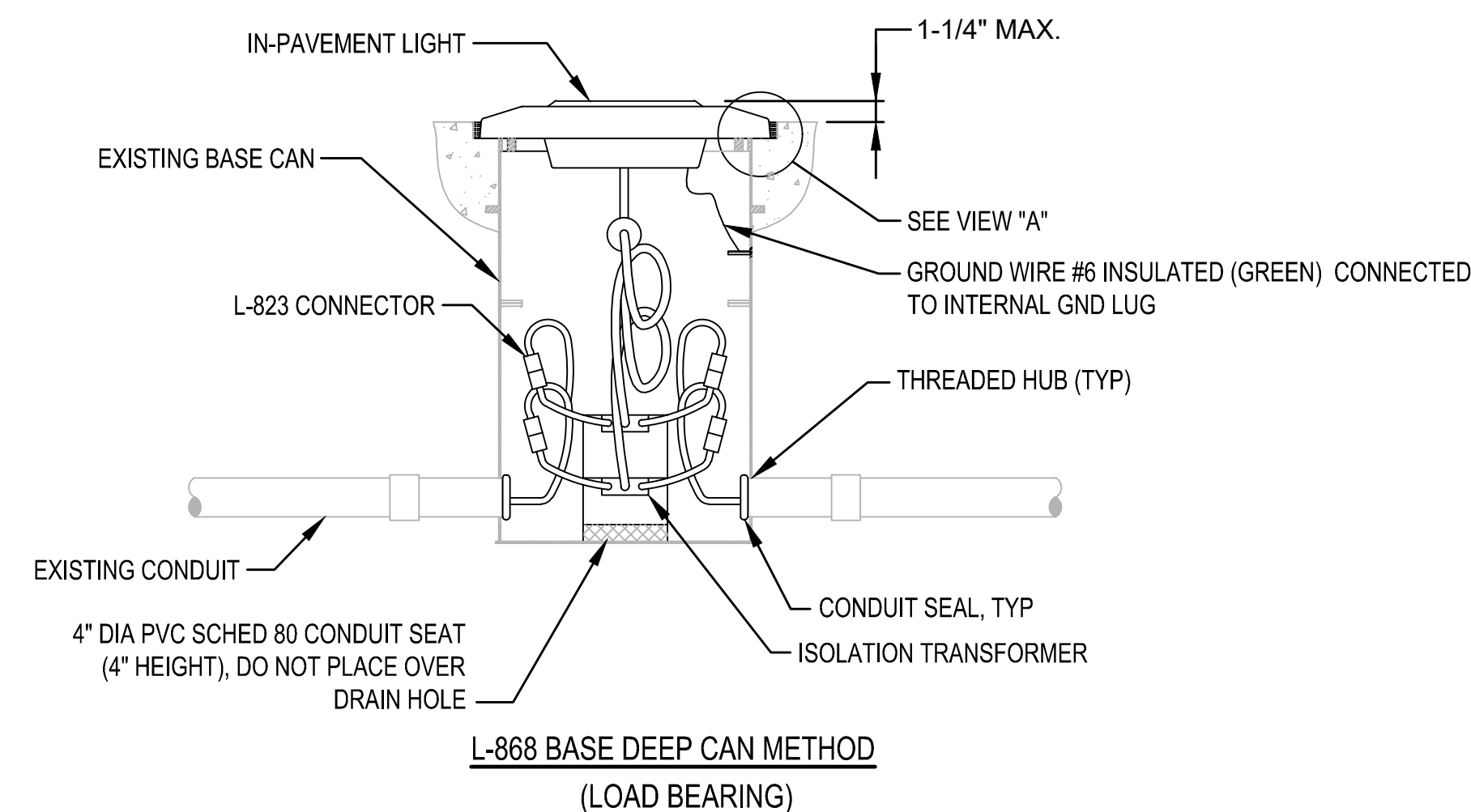
NOTE:

1. SEE SCHEDULE ON DRAWINGS E4.03 THRU E4.09 FOR DRAIN PIPE LOCATIONS.

DRAIN PIPE MODIFICATION

SCALE: N.T.S.

3
E3.13



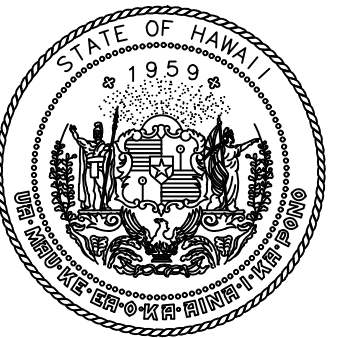
NOTES:

1. ACTUAL DIAMETER OF BASE SHALL BE COORDINATED WITH FIXTURE MANUFACTURER.

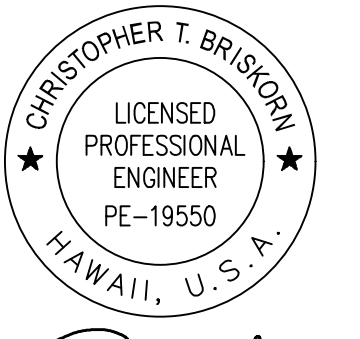
**TYPICAL IN-PAVEMENT FIXTURE
ON EXISTING BASE CAN INSTALLATION**

SCALE: N.T.S.

2
E3.13



Airports Division
DEPARTMENT OF TRANSPORTATION
STATE OF HAWAII



CHRIS BRISKORN, PE
ELECTRICAL ENGINEER
4/30/24
Expiration Date

DSGN.	DRWN.	CHKD.	APPD.
HF	HT	JB	DY

KEY PLAN / NOTES:

NO.	DATE	REVISIONS
-----	------	-----------

**CONSTRUCTION
DOCUMENTS**

JULY 2022
DATE

PROJECT TITLE :

**RELOCATE
RUNWAY 3-21**

AT
LIHUE AIRPORT
LIHUE, KAUAI, HAWAII

PROJECT NO.:

AK1031-14

SHEET TITLE:

**ELECTRICAL MISC
DETAILS**

DATE :	DWG. NO.
07/2022	E3.13
SHEET :	
357 OF 376 SHEETS	