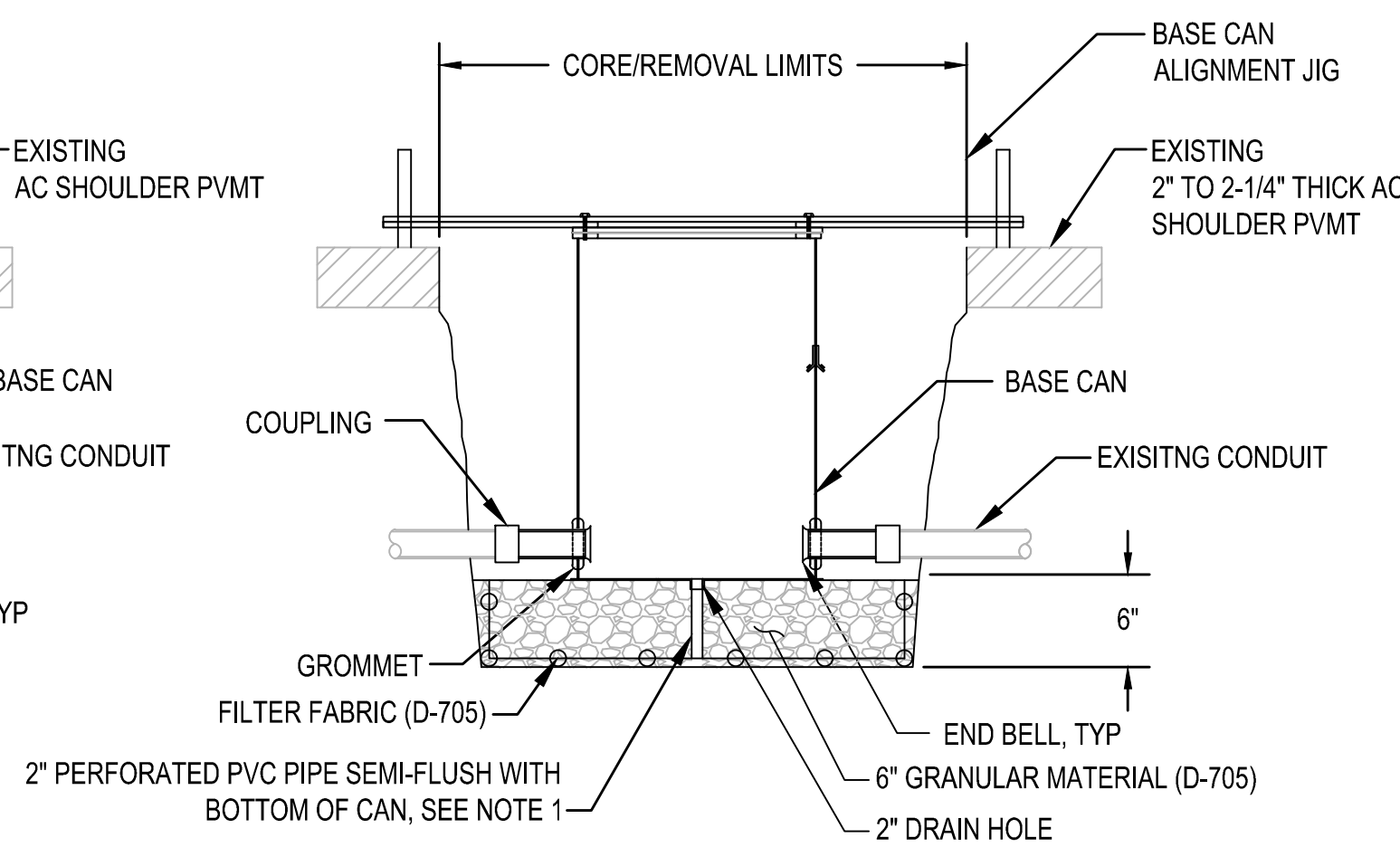


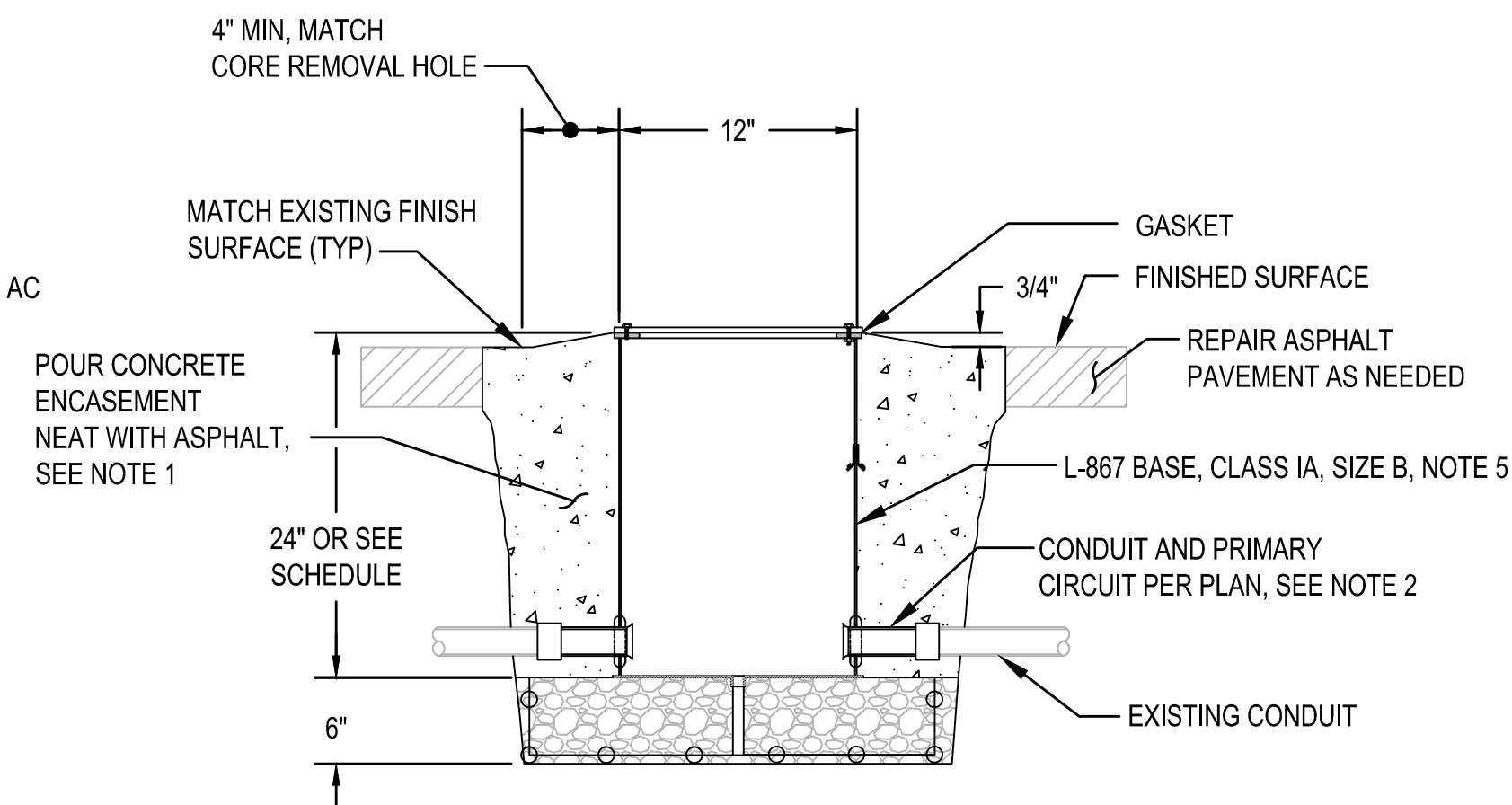
STEP 1 - REMOVAL



STEP 2 - INSTALLATION

NOTES: (STEP 2)

1. EXTEND PVC PIPE DRAIN THROUGH GRANULAR MATERIAL.
2. GROUND ROD NOT SHOWN FOR CLARITY.
3. AS REQUIRED, PROVIDE EXTENSION RINGS/SPACERS.



STEP 3 - FINISH

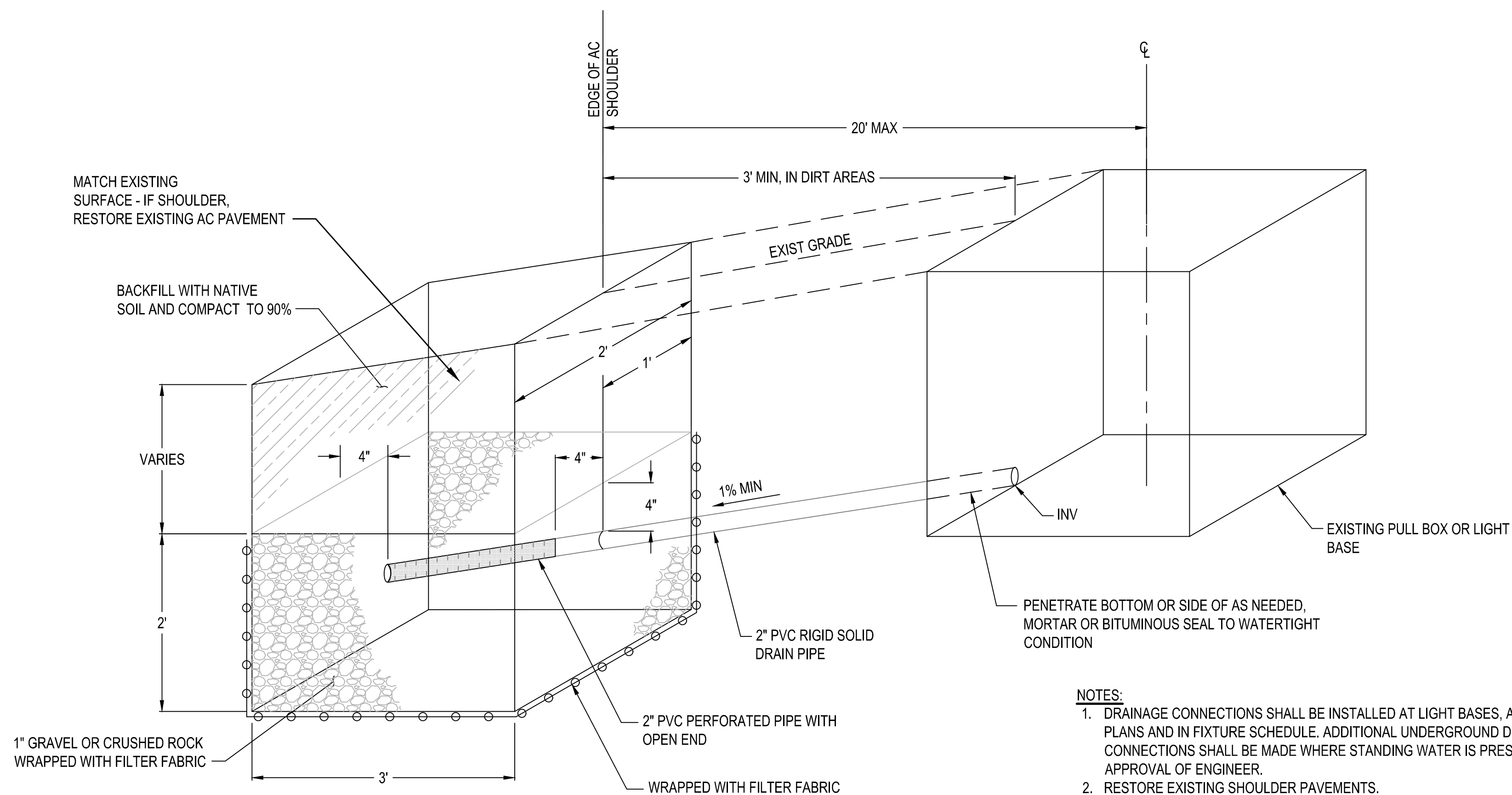
NOTES: (STEP 3)

1. FOR BASE CANS INSTALLED FOR EDGE LIGHTS, CONCRETE SHALL ACHIEVE 2,000 PSI MIN PRIOR TO REOPENING OF THE RUNWAY/TAXIWAY.
2. USE FLEXIBLE CONDUIT WHERE REQUIRED.
3. RESTORE ANY PAVEMENT AND STRIPING DAMAGED/REMOVED DURING BASE CAN REPLACEMENT.
4. FOR CLARITY, EXTENSION RINGS/SPACERS NOT SHOWN.
5. L-868 BASE CANS SHALL BE CLASS1A, SIZE B, NON-ADJUSTABLE.

TYPICAL LIGHT BASE CAN REPLACEMENT DETAIL

SCALE: N.T.S.

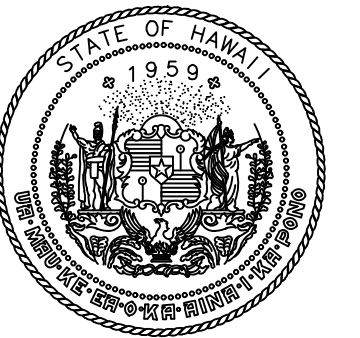
1
E3.15



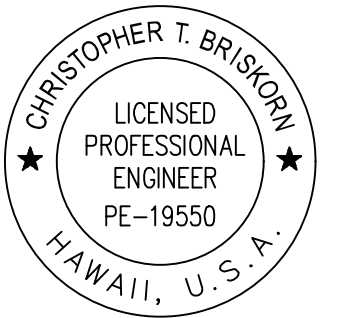
TYPICAL UNDERGROUND DRAINAGE PIT

SCALE: N.T.S.

2
E3.15



Airports Division
DEPARTMENT OF TRANSPORTATION
STATE OF HAWAII



CHRIS BRISKORN, PE
ELECTRICAL ENGINEER
4/30/24
Expiration Date

DSGN.	DRWN.	CHKD.	APPD.
HF	HT	JB	DY

KEY PLAN / NOTES:

NO.	DATE	REVISIONS
-----	------	-----------

CONSTRUCTION DOCUMENTS

JULY 2022
DATE

PROJECT TITLE :

RELOCATE
RUNWAY 3-21

AT
LIHUE AIRPORT
LIHUE, KAUAI, HAWAII

PROJECT NO.:

AK1031-14

SHEET TITLE:

BASE CAN
REPLACEMENT
DETAILS

DATE :	DWG. NO.
07/2022	E3.15
SHEET :	
359 OF 376 SHEETS	