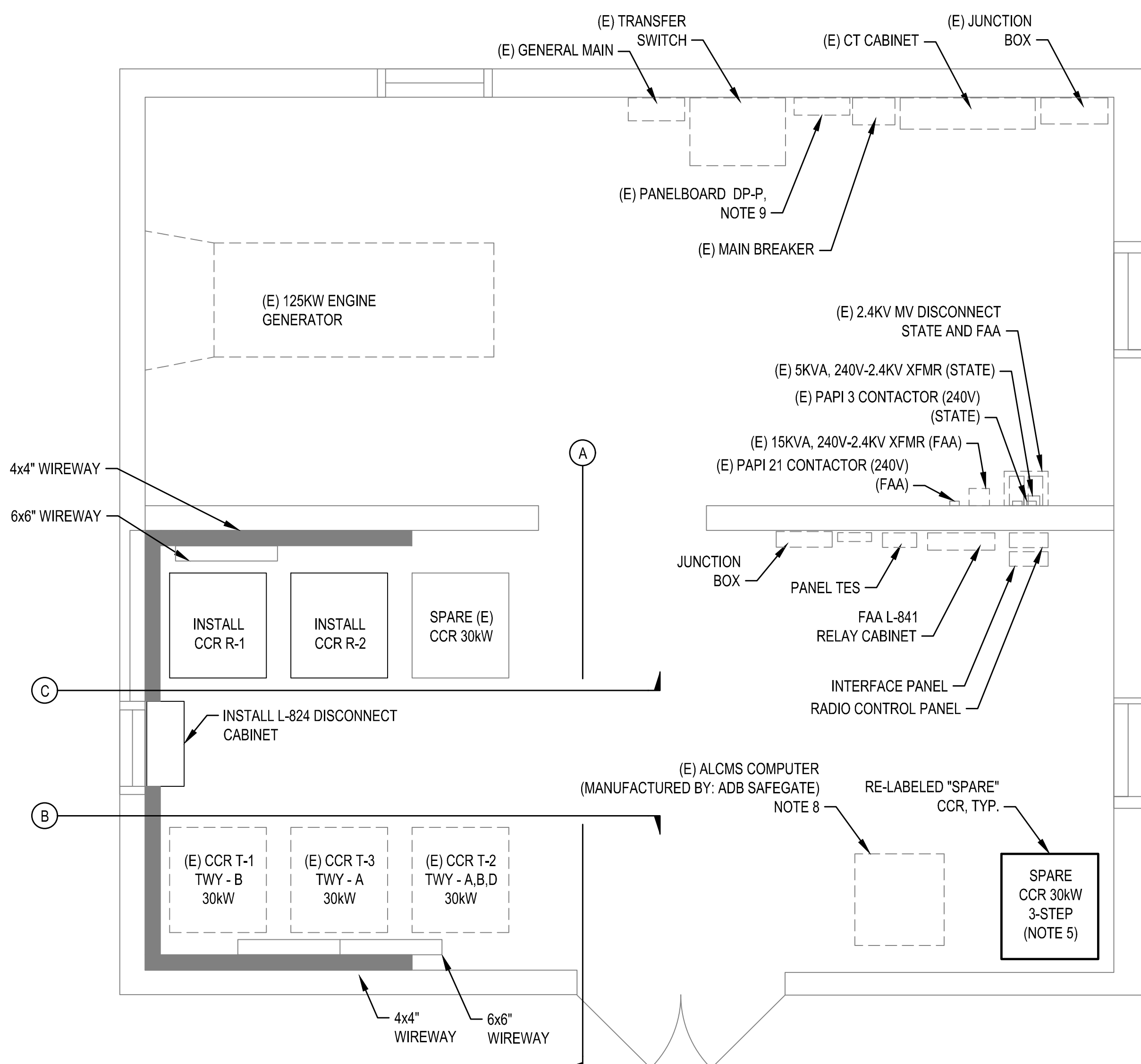


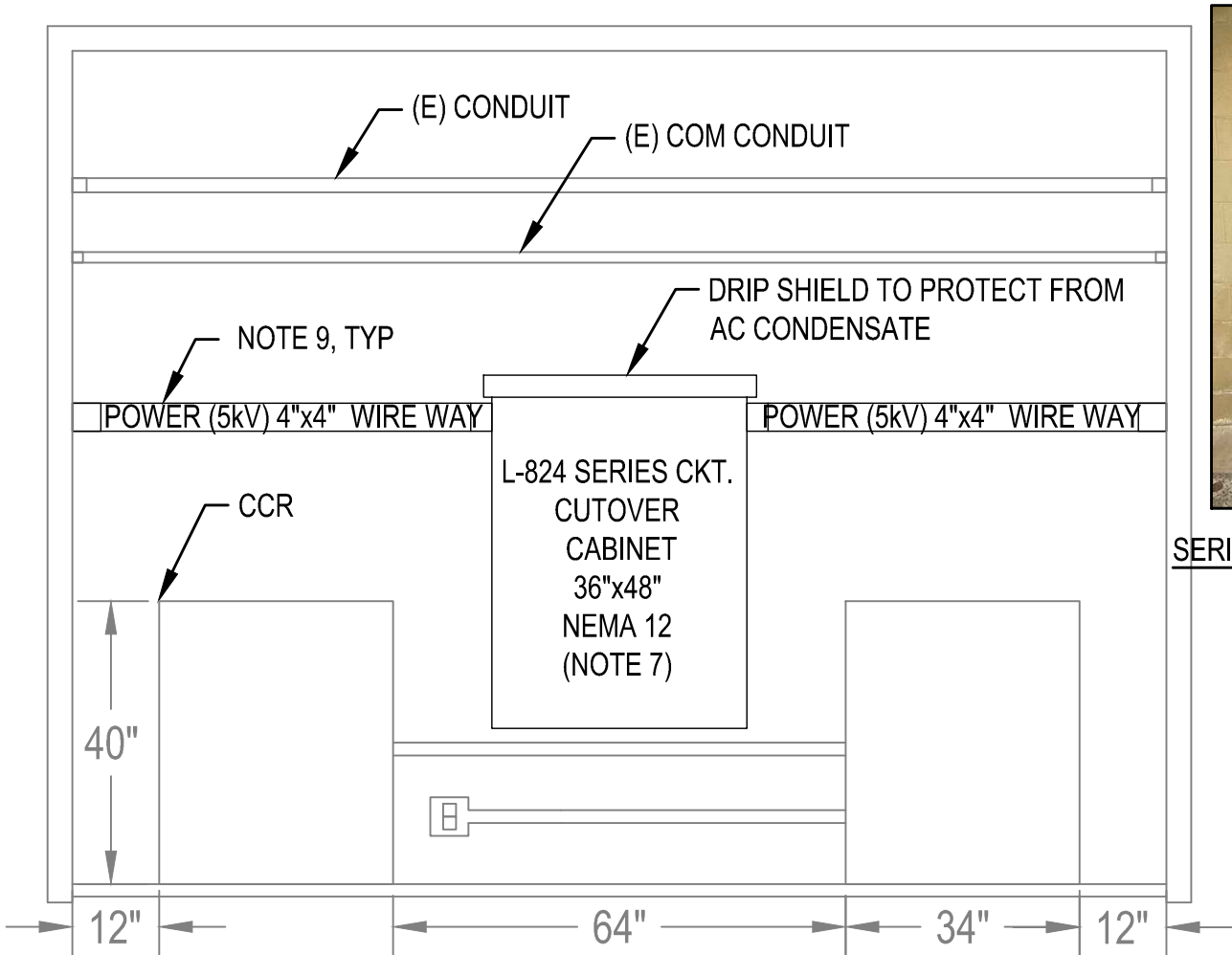
AIRFIELD LIGHTING VAULT
EQUIPMENT LAYOUT - EXISTING
SCALE: N.T.S.

1
E3.16



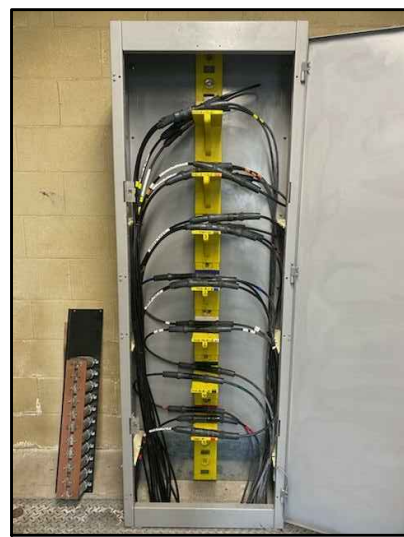
AIRFIELD LIGHTING VAULT
EQUIPMENT LAYOUT
SCALE: N.T.S.

2
E3.16

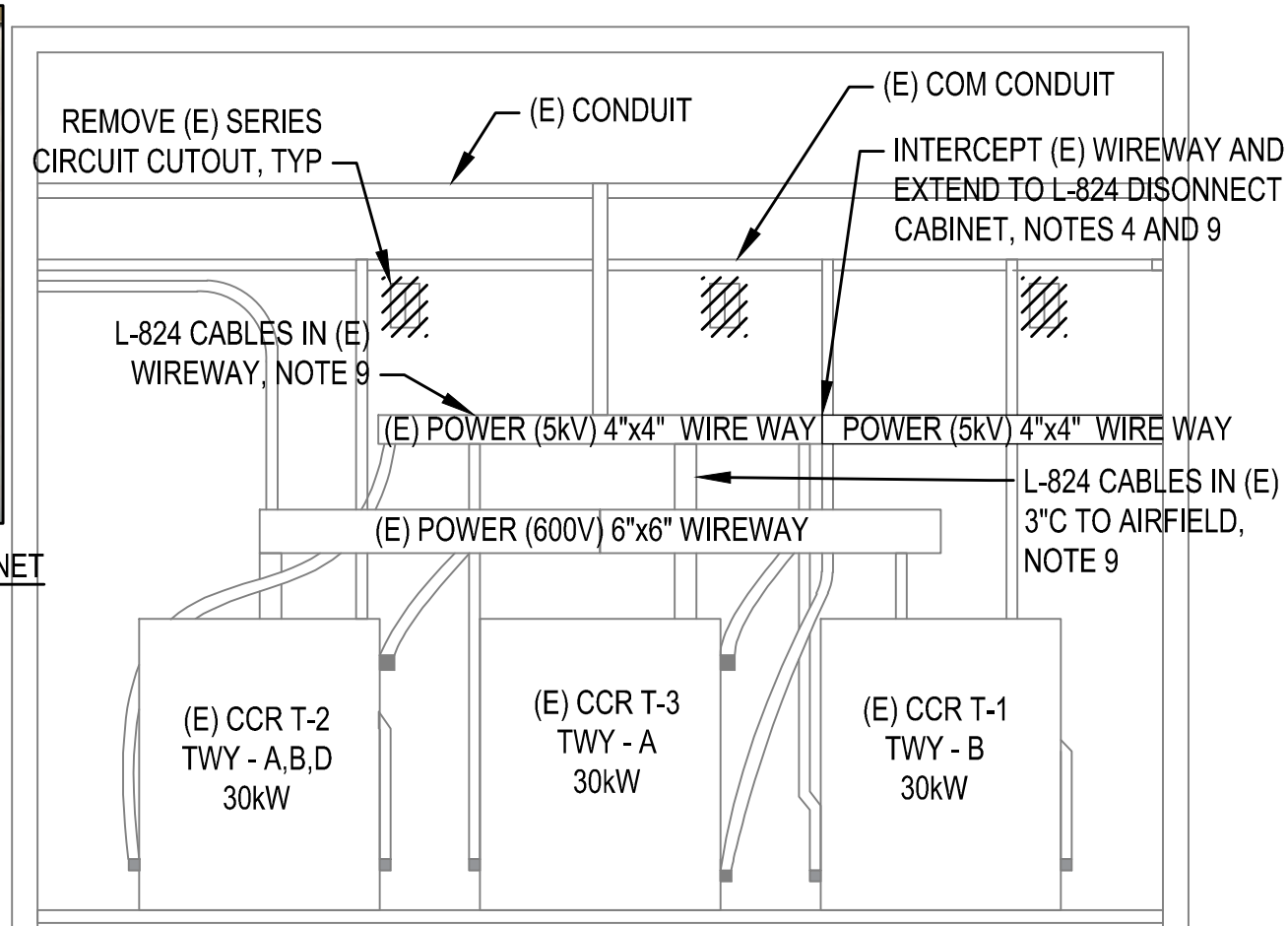


AIRFIELD LIGHTING VAULT
SECTION A ELEVATION
SCALE: N.T.S.

3
E3.16

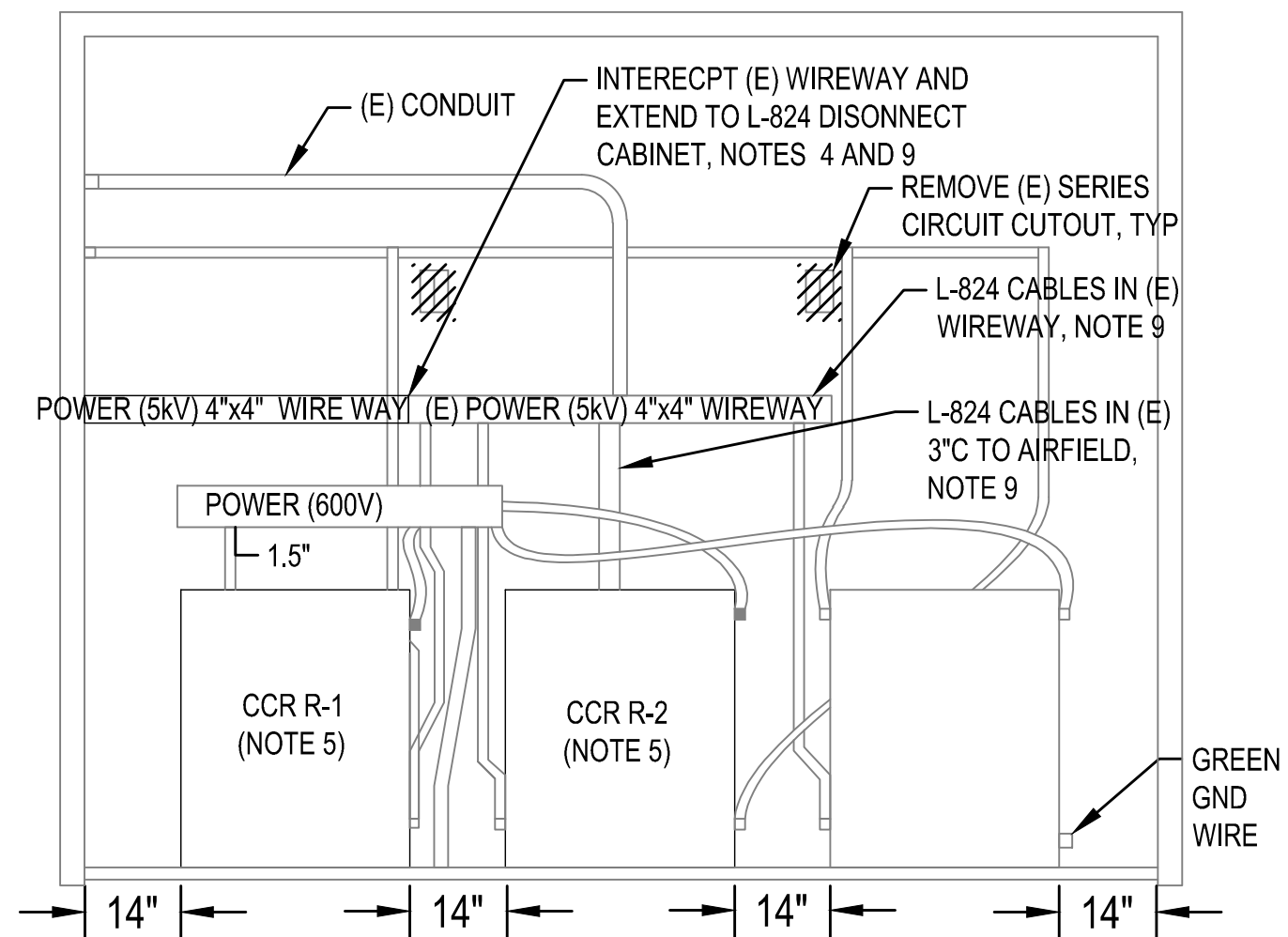


SERIES CIRCUIT CUTOVER CABINET
EXAMPLE PHOTO - A



AIRFIELD LIGHTING VAULT
SECTION B ELEVATION
SCALE: N.T.S.

4
E3.16

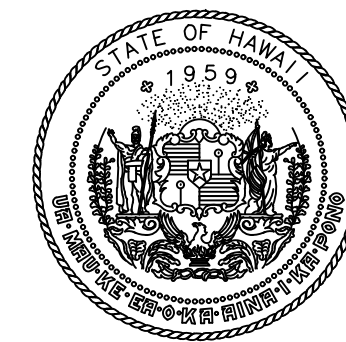


AIRFIELD LIGHTING VAULT
SECTION C ELEVATION
SCALE: N.T.S.

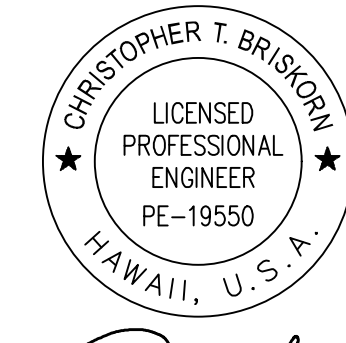
5
E3.16

SHEET NOTES:

- ALL CONDUIT SHALL BE 1" C MIN, UNLESS OTHERWISE NOTED.
- AIRFIELD LIGHTING CABLES IN CONDUIT/WIRE WAY TO MATCH SIZE AND TYPE OF EXISTING.
- EXACT LAYOUT OF EQUIPMENT SHALL BE VERIFIED IN THE FIELD PRIOR TO INSTALLATION AND AS INDICED BY MANUFACTURER'S RECOMMENDATION.
- EXTENDED WIREWAY SUPPORT AND ELEVATION SHALL MATCH EXISTING WIREWAY.
- CONTRACTOR SHALL ANCHOR CCRS TO FLOOR AND RE-ESTABLISH POWER, GROUNDING AND COMM CONNECTIONS TO CCR'S.
- CONTRACTOR SHALL COORDINATE EXACT EQUIPMENT LOCATIONS PRIOR TO INSTALLATION.
- SERIES CIRCUIT CUTOVER CABINET SHALL PROVIDE HORIZONTAL SUPPORT FOR CABLES AND L-823 CONNECTIONS, DRESSED TO ALLOW THE CROSS CONNECTIONS OF AIRFIELD LIGHTING CABLES. SEE EXAMPLE PHOTO A, THIS SHEET.
- CONTRACTOR SHALL PROVIDE REQUIRED UPDATES TO (E) ALCMS COMPUTERS AT ALV AND ATCT FOR INTEGRATION OF CCR'S.
- SEE SINGLE LINE DIAGRAM E5.02 ADDITIONAL REQUIREMENTS.



Airports Division
DEPARTMENT OF TRANSPORTATION
STATE OF HAWAII



CHRIS BRISKORN, PE
ELECTRICAL ENGINEER
4/30/24
Expiration Date

DSGN.	DRWN.	CHKD.	APPD.
HF	HT	JB	DY

KEY PLAN / NOTES:

NO.	DATE	REVISIONS
-----	------	-----------

CONSTRUCTION DOCUMENTS
JULY 2022
DATE

PROJECT TITLE :

**RELOCATE
RUNWAY 3-21**

AT
LIHUE AIRPORT
LIHUE, KAUAI, HAWAII

PROJECT NO.:

AK1031-14

SHEET TITLE:

**AIRPORT LIGHTING
VAULT PLAN**

DATE :	DWG. NO.
07/2022	E3.16
SHEET :	
360 OF 376 SHEETS	