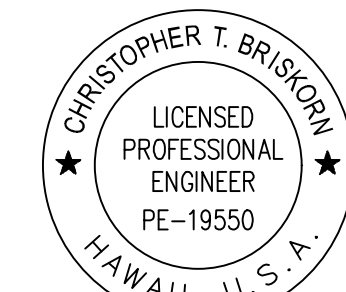


Airports Division
DEPARTMENT OF TRANSPORTATION
STATE OF HAWAII



CHRIS BRISKORN, PE
ELECTRICAL ENGINEER

4/30/24
Expiration Date

DSGN.	DRWN.	CHKD.	APPD.
HF	HT	JB	DY

KEY PLAN / NOTES:

NO.	DATE	REVISIONS
-----	------	-----------

CONSTRUCTION DOCUMENTS

JULY 2022
DATE

PROJECT TITLE :

RELOCATE RUNWAY 3-21

AT
LIHUE AIRPORT
LIHUE, KAUAI, HAWAII

PROJECT NO.:

AK1031-14

SHEET TITLE:

AIRFIELD LIGHTING DETAILS 1 OF 2

DATE :

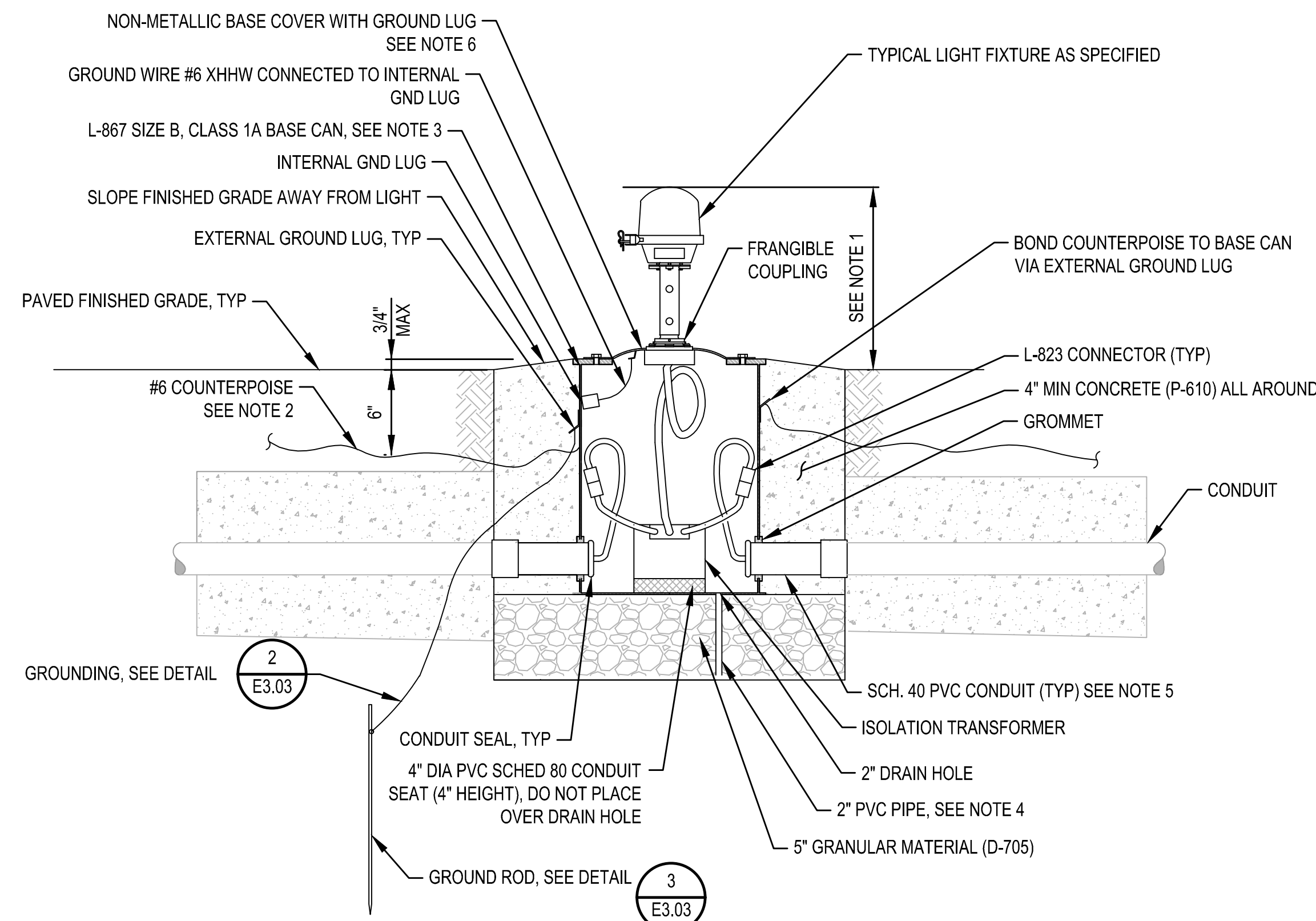
07/2022

SHEET :

346 OF 376 SHEETS

DWG. NO.

E3.02



NOTES:

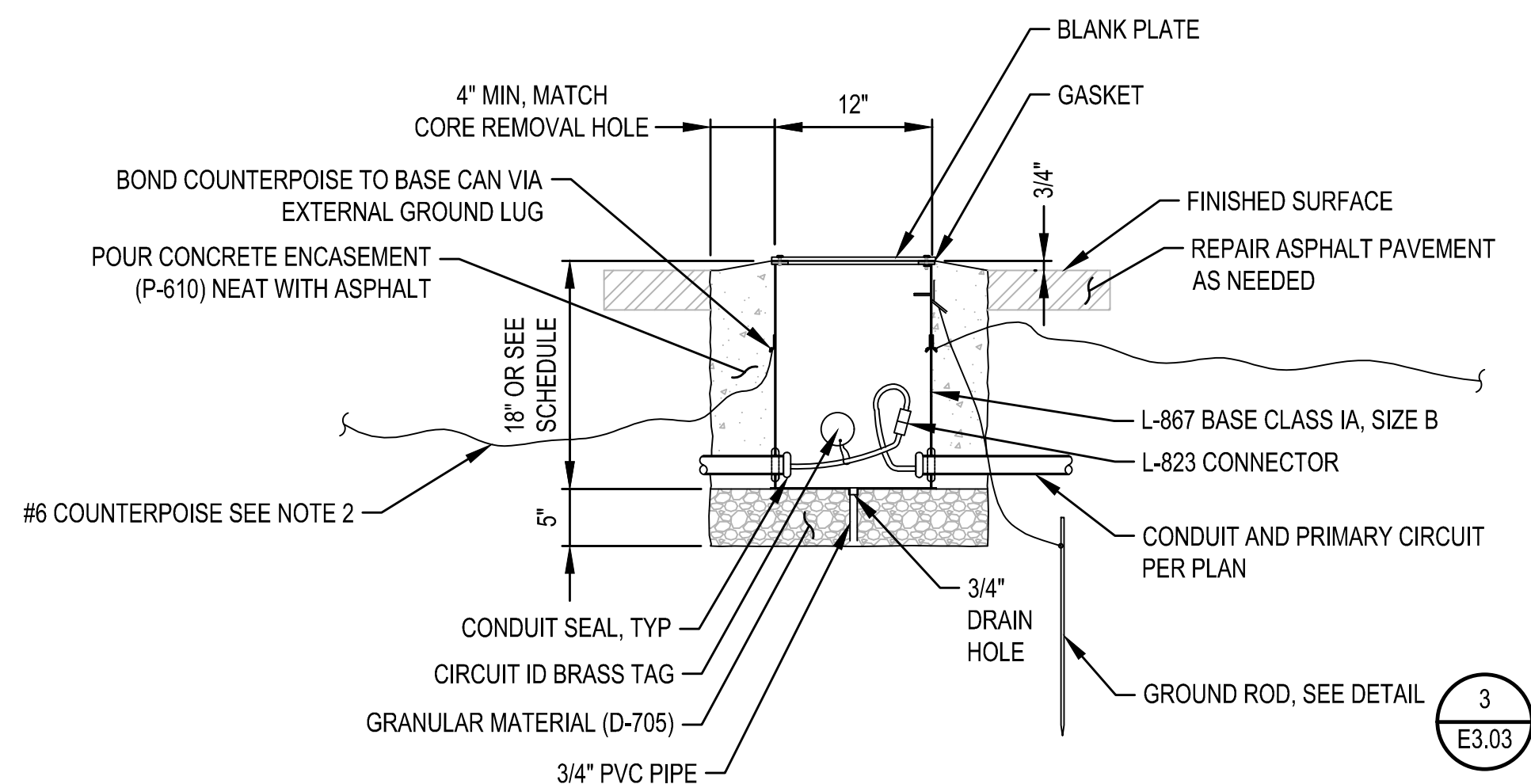
- STANDARD HEIGHT IS 14" FOR ELEVATED EDGE LIGHTS.
- ROUTE COUNTERPOISE THROUGH CONCRETE ENCASEMENT TOWARDS FULL STRENGTH PAVEMENT, CONNECT TO BASE SHALL BE ALUMINUM THREADED.
- AS REQUIRED, PROVIDE EXTENSION RINGS/SPACERS.
- EXTEND PVC PIPE DRAIN INTO THE SUBGRADE.
- LIQUID TIGHT NON-METALLIC FLEXIBLE CONDUIT AS REQUIRED.
- BASE COVER SHALL BE ALUMINUM THREADED TO ACCOMMODATE STANDARD 1.5" DIA. ELEVATED EDGE LIGHT COUPLING.

TYPICAL BASE CAN MOUNTED ELEVATED FIXTURE INSTALLATION

SCALE: N.T.S.

1

E3.02



NOTES:

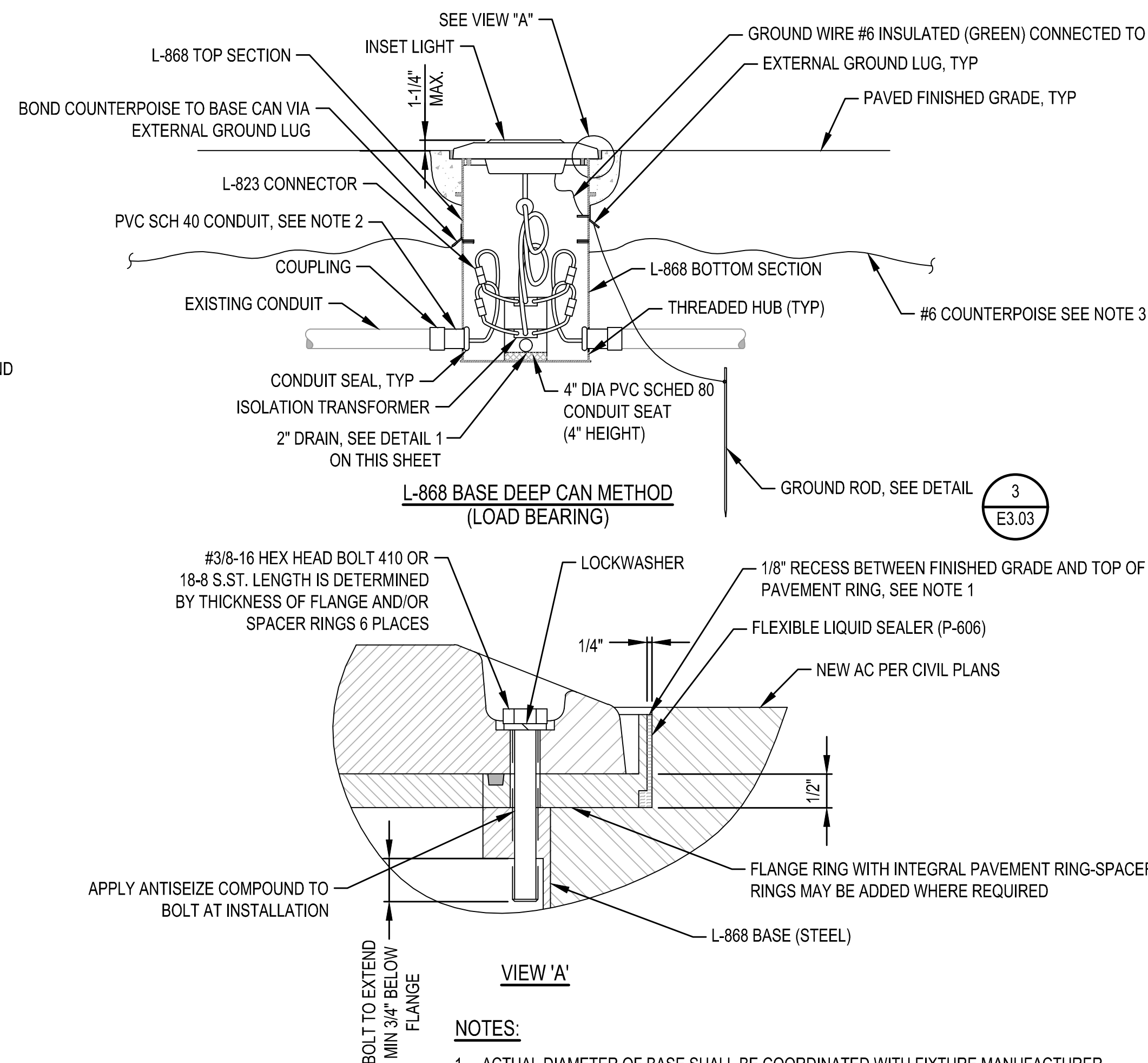
- FOR CLARITY, EXTENSION/SPACERS NOT SHOWN.
- ROUTE COUNTERPOISE THROUGH CONCRETE ENCASEMENT TOWARDS FULL STRENGTH PAVEMENT, CONNECT TO BASE.

TYPICAL JUNCTION CAN INSTALLATION DETAIL

SCALE: N.T.S.

3

E3.02



NOTES:

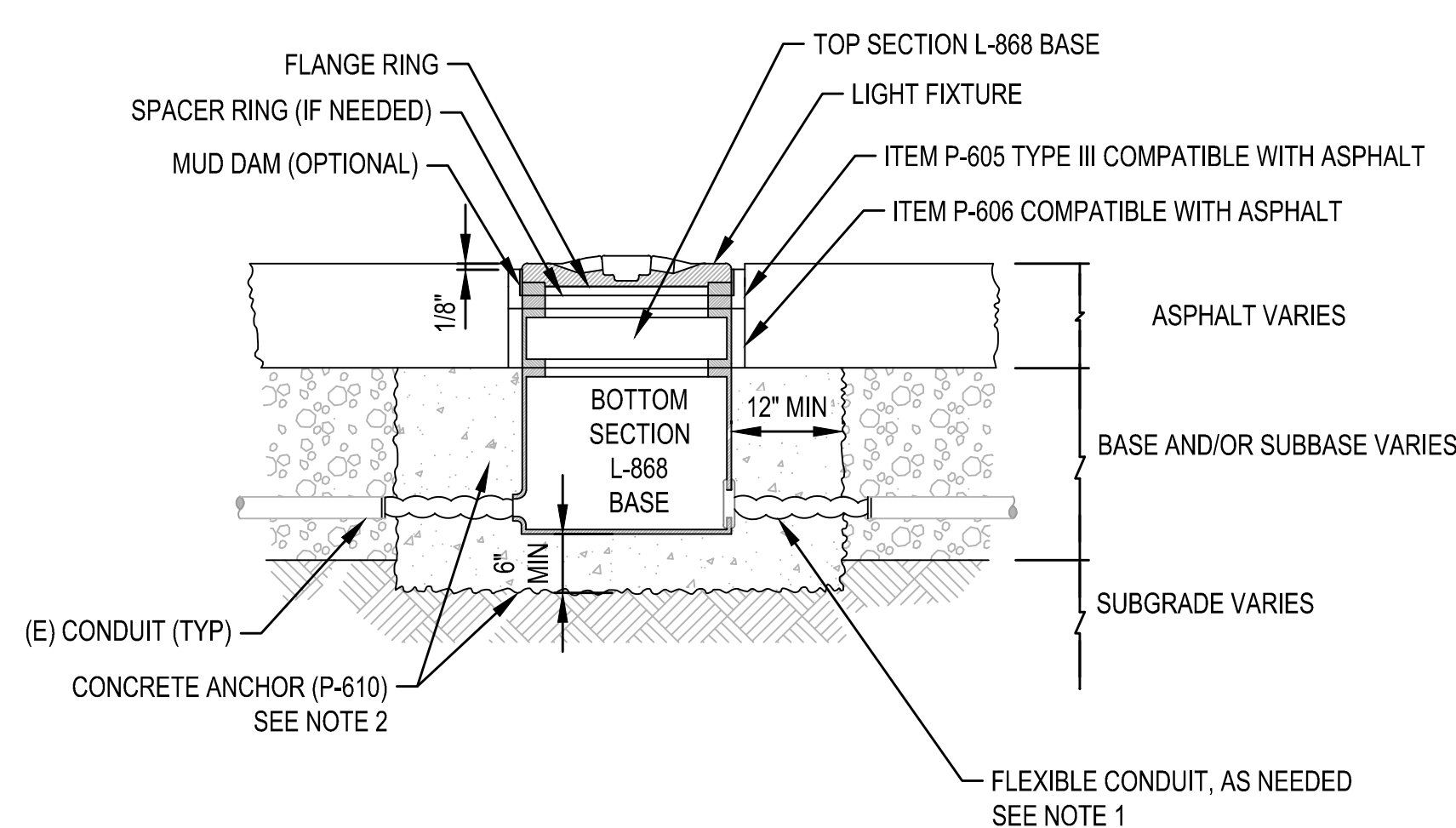
- ACTUAL DIAMETER OF BASE SHALL BE COORDINATED WITH FIXTURE MANUFACTURER.
- LIQUID TIGHT NON-METALLIC FLEXIBLE CONDUIT AS REQUIRED.
- ROUTE COUNTERPOISE THROUGH CONCRETE ENCASEMENT TOWARDS FULL STRENGTH PAVEMENT, CONNECT TO BASE.

TYPICAL BASE CAN BE MOUNTED IN-PAVEMENT FIXTURE INSTALLATION

SCALE: N.T.S.

2

E3.02



NOTES:

- FLEXIBLE CONDUIT MAY BE CONNECTED TO THE BASE EITHER THROUGH A HUB OR GROMMET.
- BASE CANS FOR IN-PAVEMENT LIGHTS WITHIN RUNWAY MAIN PAVEMENTS, CONCRETE SHALL ACHIEVE 4,000 PSI PRIOR TO REOPENING OF THE RUNWAY/TAXIWAY.

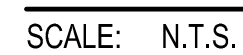
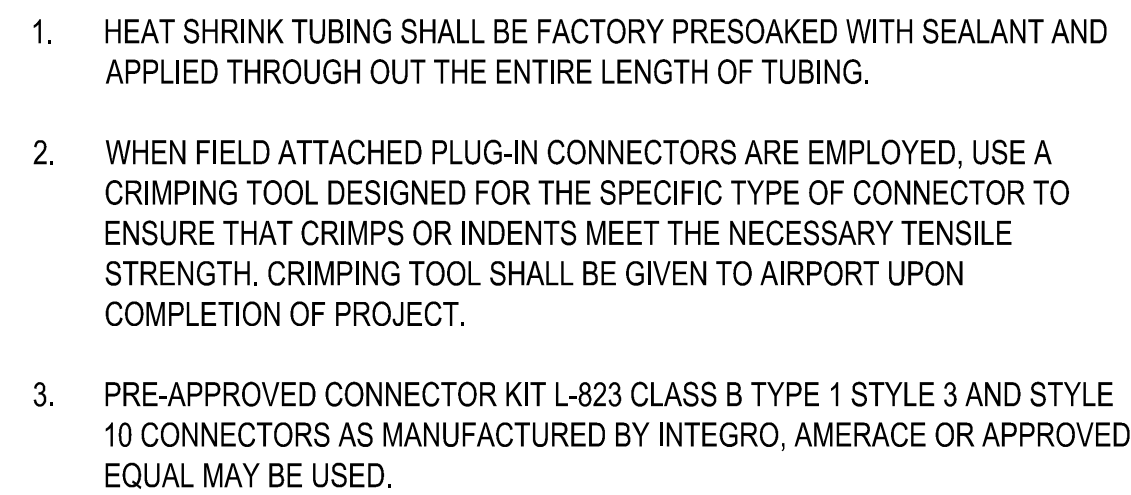
TYPICAL IN-PAVEMENT BASE CAN DETAIL

SCALE: N.T.S.

4

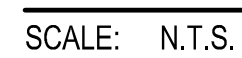
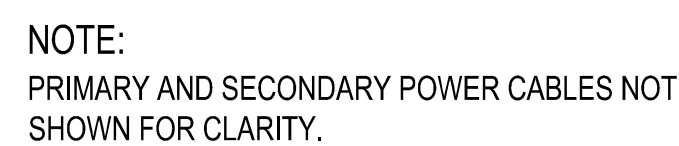
E3.02

C:\USERS\GALLARDO\BOX\LIHUE\RSA\900-CAD-GIS\900-CAD\20-SHEETS\E3.02.DWG

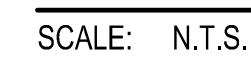


SCALE: N.T.S.

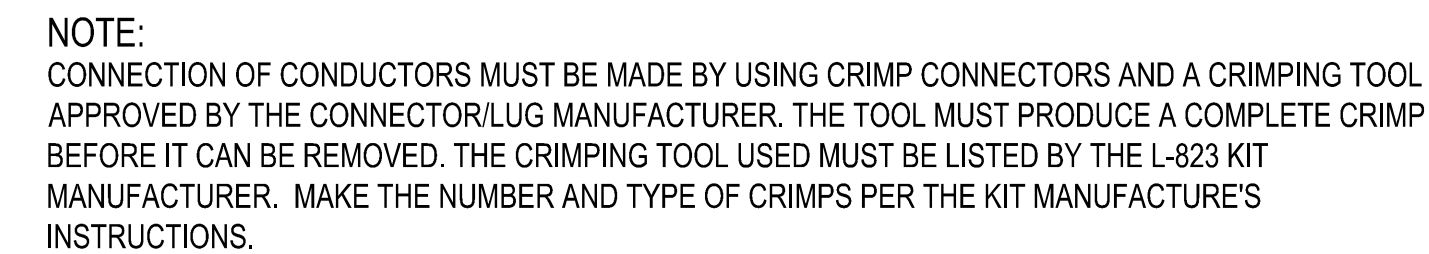
1
E3.03



4
E3.03



(5
E3.0

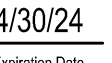


SCALE: N.T.S.

(6
E3.



(



KEY PLAN / NOTES:

KEY PLAN / NOTES:

CONSTRUCTION DOCUMENTS

JULY 2022

DATE

PROJECT TITLE :

AT
LIHUE AIRPORT
LIHUE, KAUAI, HAWAII

PROJECT NO.:

AK1031-14

SHEET TITLE:

20.00

20.00

C:\USERS\GALLARDO\BOX\LIHUE RSA\900-CAD-GIS\900-CAD\20-SHEETS\E3.03.DWG