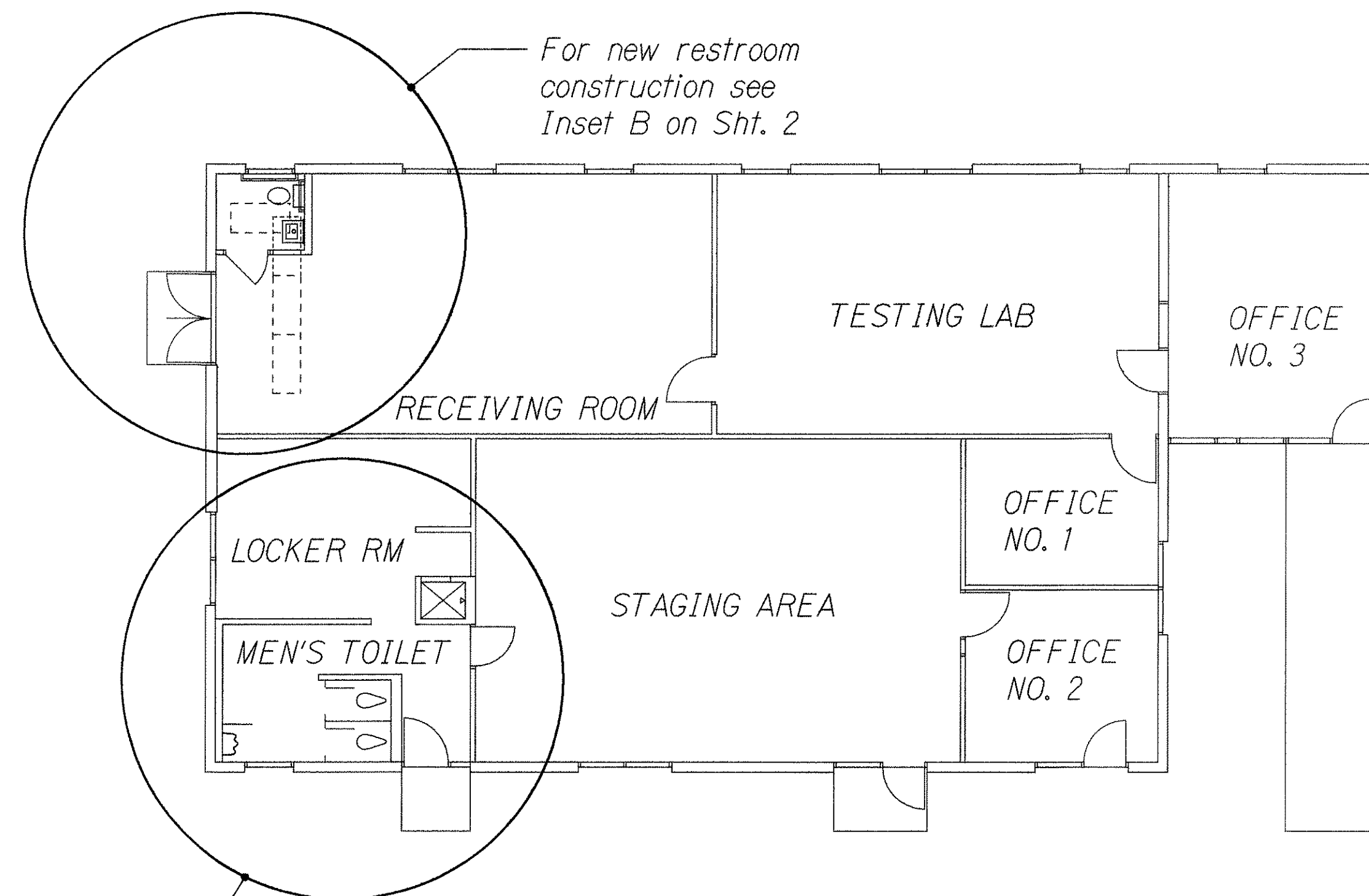
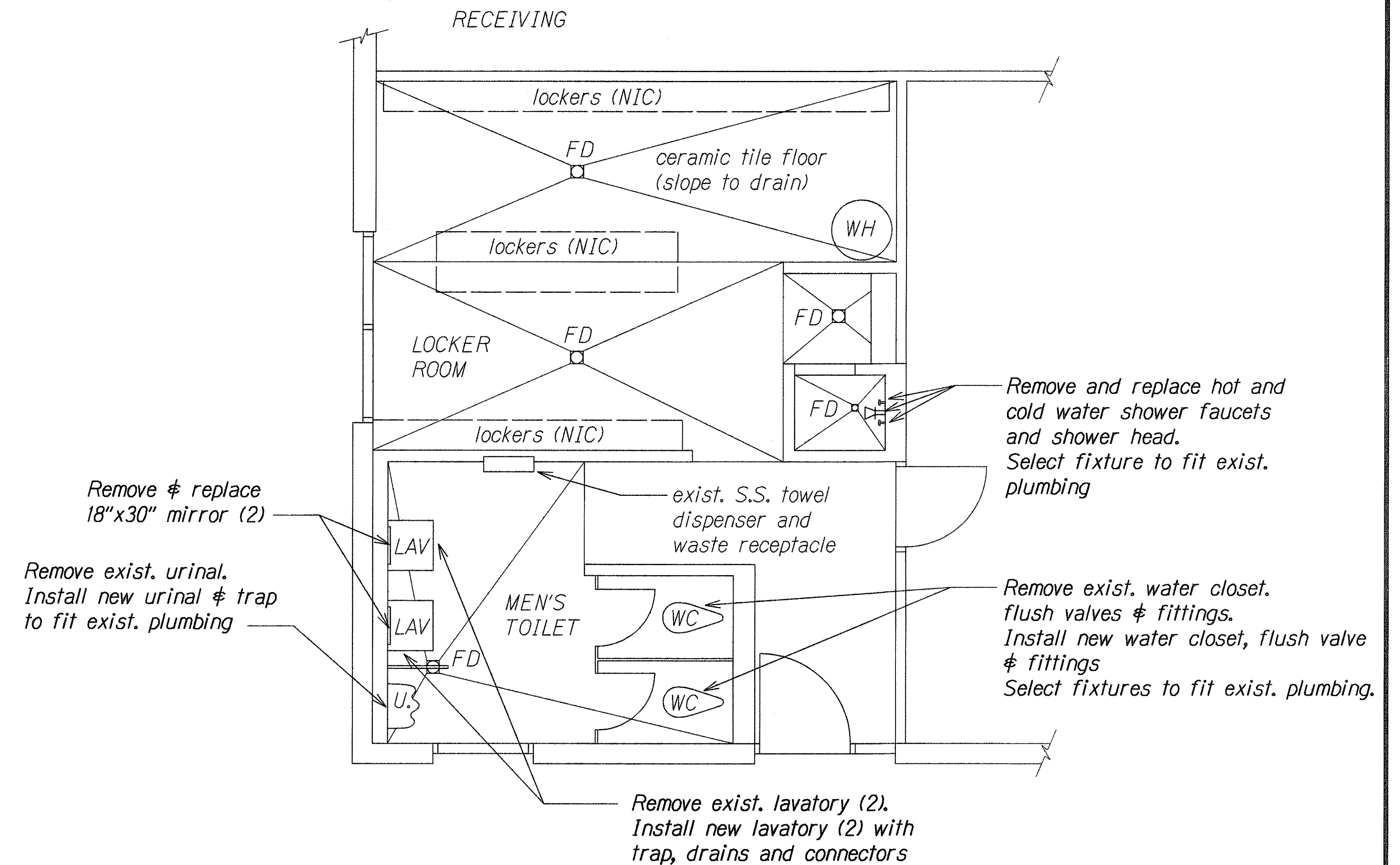


FED. ROAD DIST. NO.	STATE	PROJ. NO.	FISCAL YEAR	SHEET NO.	TOTAL SHEETS
HAWAII	HAW.	HWY-K-01-94M	1994	5	10



PLAN
(BLDG. C)
Scale: $\frac{3}{8}$ "=1'



INSET A
PLUMBING FIXTURE REPLACEMENT PLAN
EXISTING MEN'S TOILET AND LOCKER ROOM (BLDG. C)
Scale: $\frac{3}{8}$ "=1'

Note: See Special Provisions for new fixture requirements

DESIGNED BY	DATE
TRACED BY	
QUANTITIES BY	
CHECKED BY	
ORIGINAL PLAN	
NOTE BOOK	
N.	

STATE OF HAWAII DEPARTMENT OF TRANSPORTATION HIGHWAYS DIVISION
PLUMBING FIXTURE REPLACEMENT PLAN
BUILDING C
KAPAA BASEYARD RENOVATIONS
Project No. HWY-K-01-94M
Scale: As Shown Date: Sept., 1993
SHEET No. 1 OF 6 SHEETS