

FED. ROAD DIST. NO.	STATE	PROJ. NO.	FISCAL YEAR	SHEET NO.	TOTAL SHEETS
HAWAII	HAW.	2000E-01-00	2000	42	60

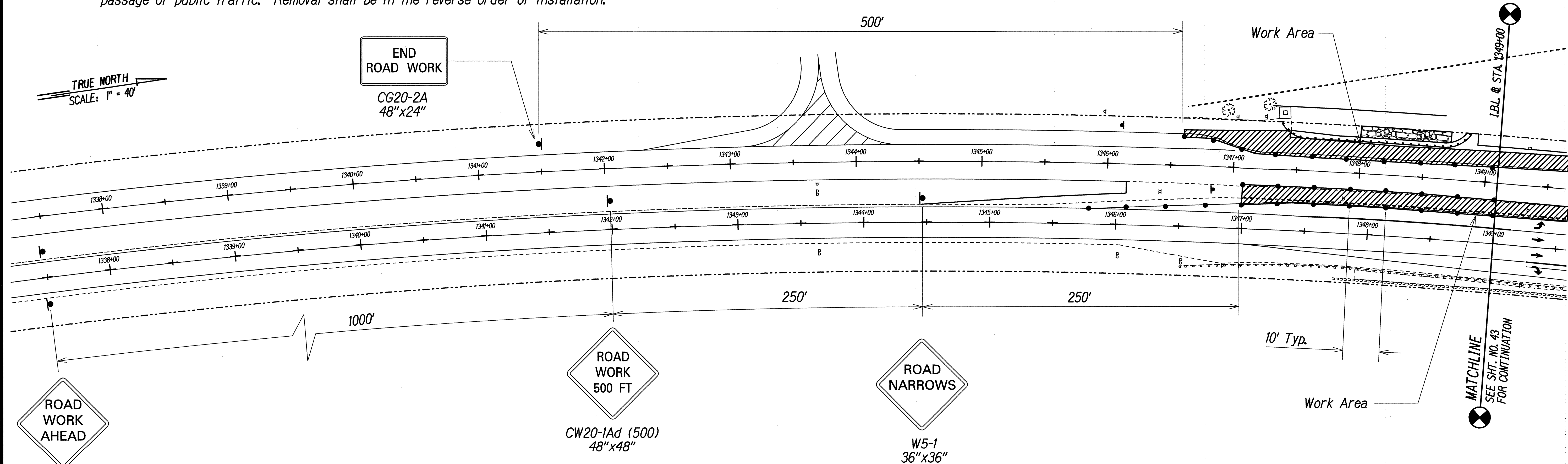
General Notes For Traffic Control Plans

- The permittee shall make minor adjustments at Intersections, Driveways, Structures, etc., to fit field conditions.
- Cones or delineators shall be extended to a point where they are visible to approaching traffic.
- Traffic control devices shall be installed such that the sign or device farthest from the work area shall be placed first. The others shall then be placed progressively toward the work area.
- Regulatory and warning signs within the construction zone that are in conflict with the traffic control plans shall be removed or covered. All signs shall be restored upon completion of the work.
- All traffic lanes shall be a minimum of 10 feet wide.
- All construction warning signs shall be promptly removed or covered whenever the message is not applicable or not in use.
- The backs of all signs used for traffic control shall be appropriately covered to preclude the display of inapplicable sign messages (i.e., when signs have messages on both faces).
- At the end of each day's work or as soon as the work is completed, the permittee shall remove all traffic control devices no longer needed to permit free and safe passage of public traffic. Removal shall be in the reverse order of installation.

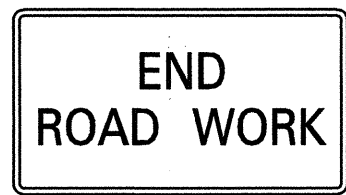
NOTES:

- Traffic control plan shall be in accordance with State of Hawaii, Department of Transportation "Standards for Road Construction" and U.S. Department of Transportation "Manual on Uniform Traffic Control Devices (MUTCD).
- Devices and Signs shall be in accordance with the U.S. Department of Transportation MUTCD.
- Quality of devices and signs shall be in accordance with American Traffic Safety Services Association (ATSSA) "Quality Standards for Work Zone Traffic Control Devices".
- Posted Speed Limit: 35 MPH

CONSTRUCTION SIGN SUMMARY			
SIGN NO.	MESSAGE	W/POST	W/O POST
CG20-2A	END ROAD WORK	4	
CW20-1Ad	ROAD WORK AHEAD	12	
W3-2a	YIELD AHEAD	2	
W5-1	ROAD NARROWS	2	
TOTAL		20	0



CW20-1Ad
48"x48"



CG20-2A
48"x24"



CW20-1Ad (500)
48"x48"



W5-1
36"x36"

LEGEND



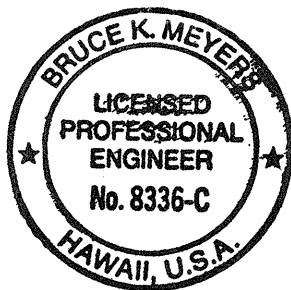
Leveling Areas



Traffic Cone or Delineator

SURVEY PLOTTED BY	DATE
DRAWN BY	
DESIGNED BY	
QUANTITIES BY	
CHECKED BY	
ORIGINAL PLAN	
NOTE BOOK	
No.	

99050/4/qaatcd.dgn

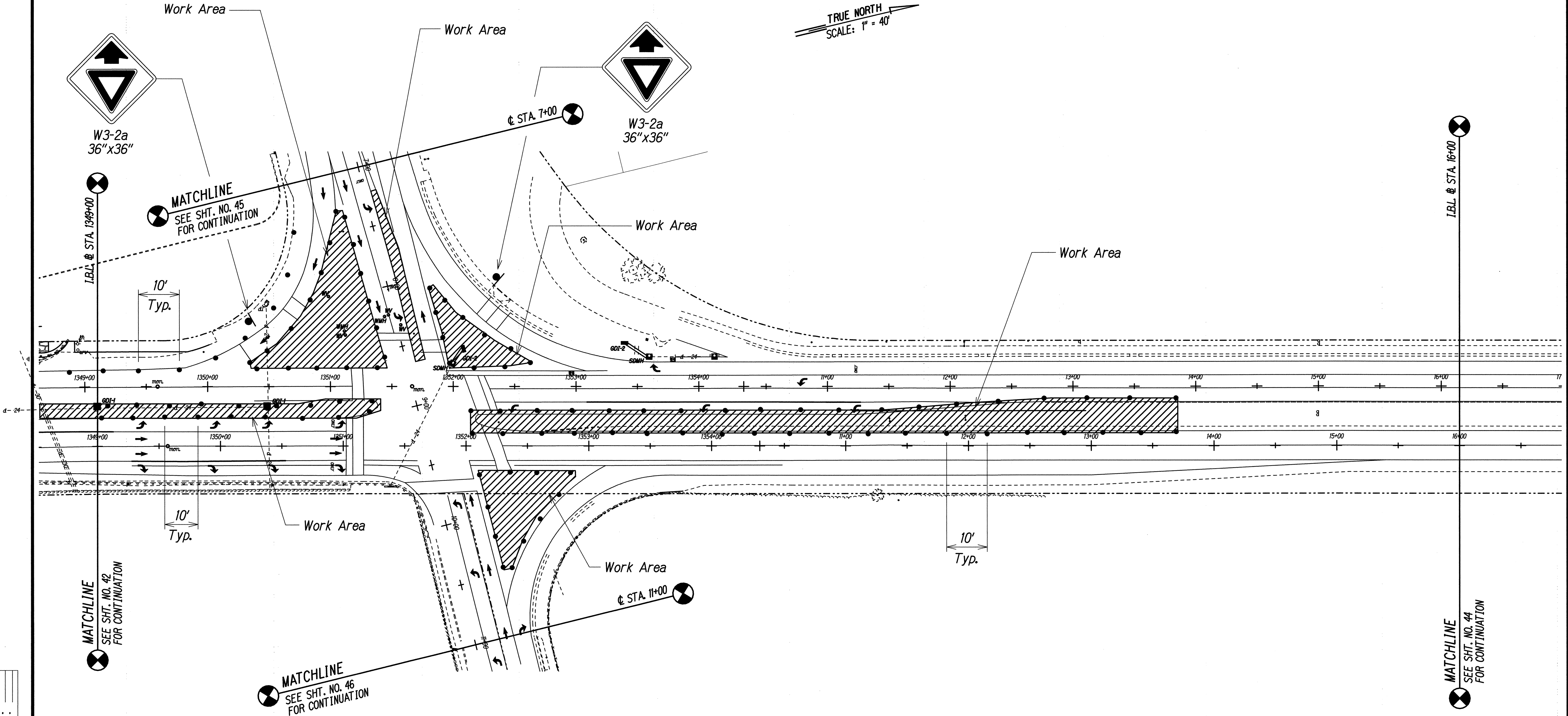


THIS WORK WAS PREPARED BY ME OR UNDER MY SUPERVISION AND CONSTRUCTION OF THIS PROJECT WILL BE UNDER MY OBSERVATION.

DATE: *May 2000*

STATE OF HAWAII
DEPARTMENT OF TRANSPORTATION
HIGHWAYS DIVISION
TRAFFIC CONTROL PLANS
PUAINAKO STREET IMPROVEMENTS, PHASE 1
Kilauea Ave. to Kanoelohua Ave.
Project No. 2000E-01-00
Scale: N.T.S. Date: May, 2000
SHEET No. 1 OF 5 SHEETS

FED. ROAD DIST. NO.	STATE	PROJ. NO.	FISCAL YEAR	SHEET NO.	TOTAL SHEETS
HAWAII	HAW.	2000E-01-00	2000	43	60



NOTES:

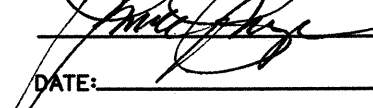
1. Traffic control plan shall be in accordance with State of Hawaii, Department of Transportation "Standards for Road Construction" and U.S. Department of Transportation "Manual on Uniform Traffic Control Devices (MUTCD).
2. Devices and Signs shall be in accordance with the U.S. Department of Transportation MUTCD.
3. Quality of devices and signs shall be in accordance with American Traffic Safety Services Association (ATSSA) "Quality Standards for Work Zone Traffic Control Devices".
4. Posted Speed Limit: 35 MPH

LEGEND

-  Leveling Areas
-  Traffic Cone or Delineator

BRUCE K. MEYERS
LICENSED PROFESSIONAL ENGINEER
No. 8336-C
HAWAII, U.S.A.

THIS WORK WAS PREPARED BY ME OR UNDER MY SUPERVISION AND CONSTRUCTION OF THIS PROJECT WILL BE UNDER MY OBSERVATION.

DATE: 

STATE OF HAWAII
DEPARTMENT OF TRANSPORTATION
HIGHWAYS DIVISION

TRAFFIC CONTROL PLANS

PUAINAKO STREET IMPROVEMENTS, PHASE 1
Kilauea Ave. to Kanoehua Ave.
Project No. 2000E-01-00
Scale: N.T.S. Date: May, 2000

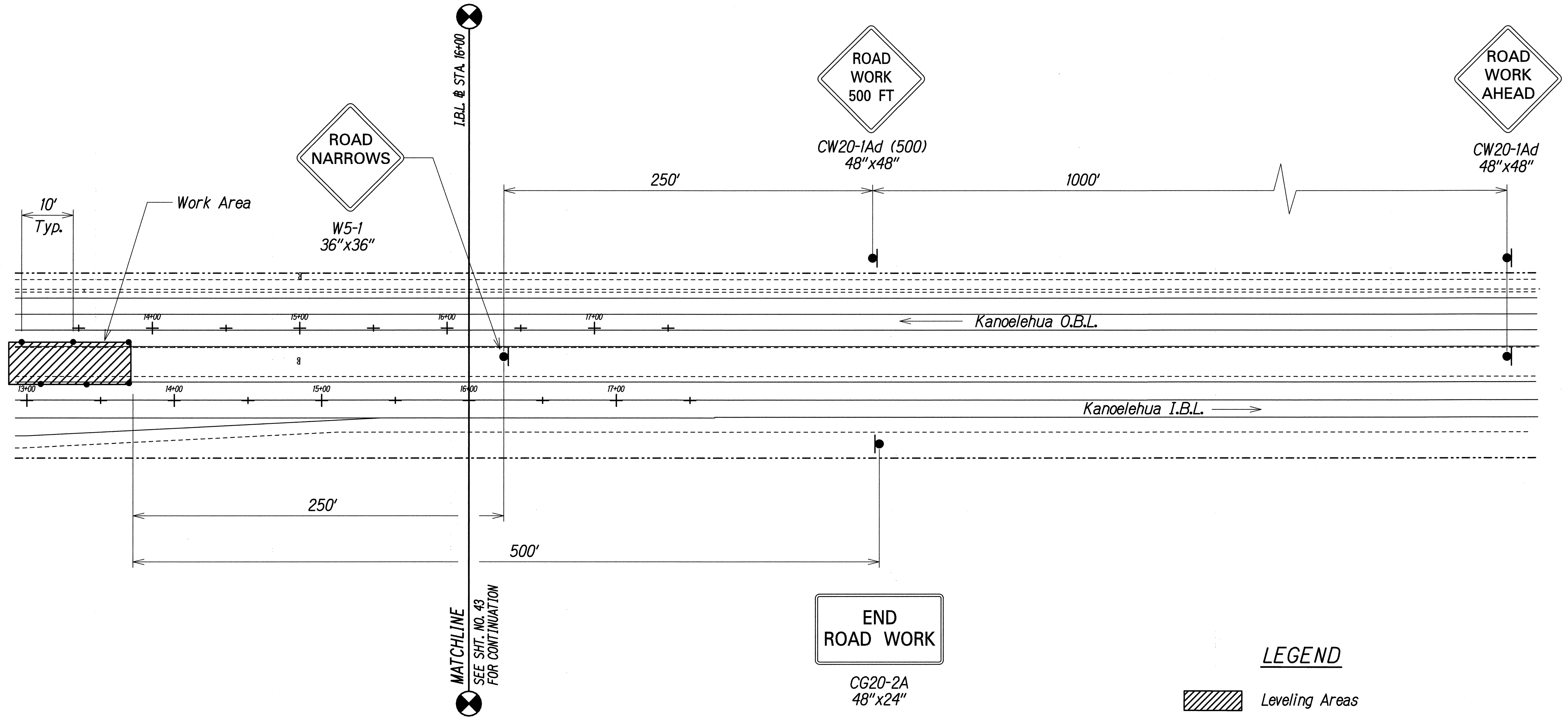
SHEET No. 2 OF 5 SHEETS

ORIGINAL PLAN	DATE
DESIGNED BY	
TRACED BY	
NOTE BOOK	
QUANTITIES BY	
CHECKED BY	

99050/49aen202.dgn

FED. ROAD DIST. NO.	STATE	PROJ. NO.	FISCAL YEAR	SHEET NO.	TOTAL SHEETS
HAWAII	HAW.	2000E-01-00	2000	44	60

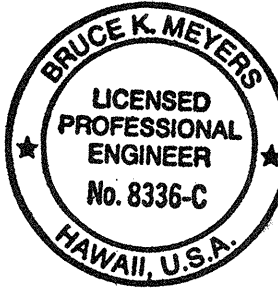
TRUE NORTH
SCALE: 1" = 40'



NOTES:

1. Traffic control plan shall be in accordance with State of Hawaii, Department of Transportation "Standards for Road Construction" and U.S. Department of Transportation "Manual on Uniform Traffic Control Devices (MUTCD).
2. Devices and Signs shall be in accordance with the U.S. Department of Transportation MUTCD.
3. Quality of devices and signs shall be in accordance with American Traffic Safety Services Association (ATSSA) "Quality Standards for Work Zone Traffic Control Devices".
4. Posted Speed Limit: 35 MPH

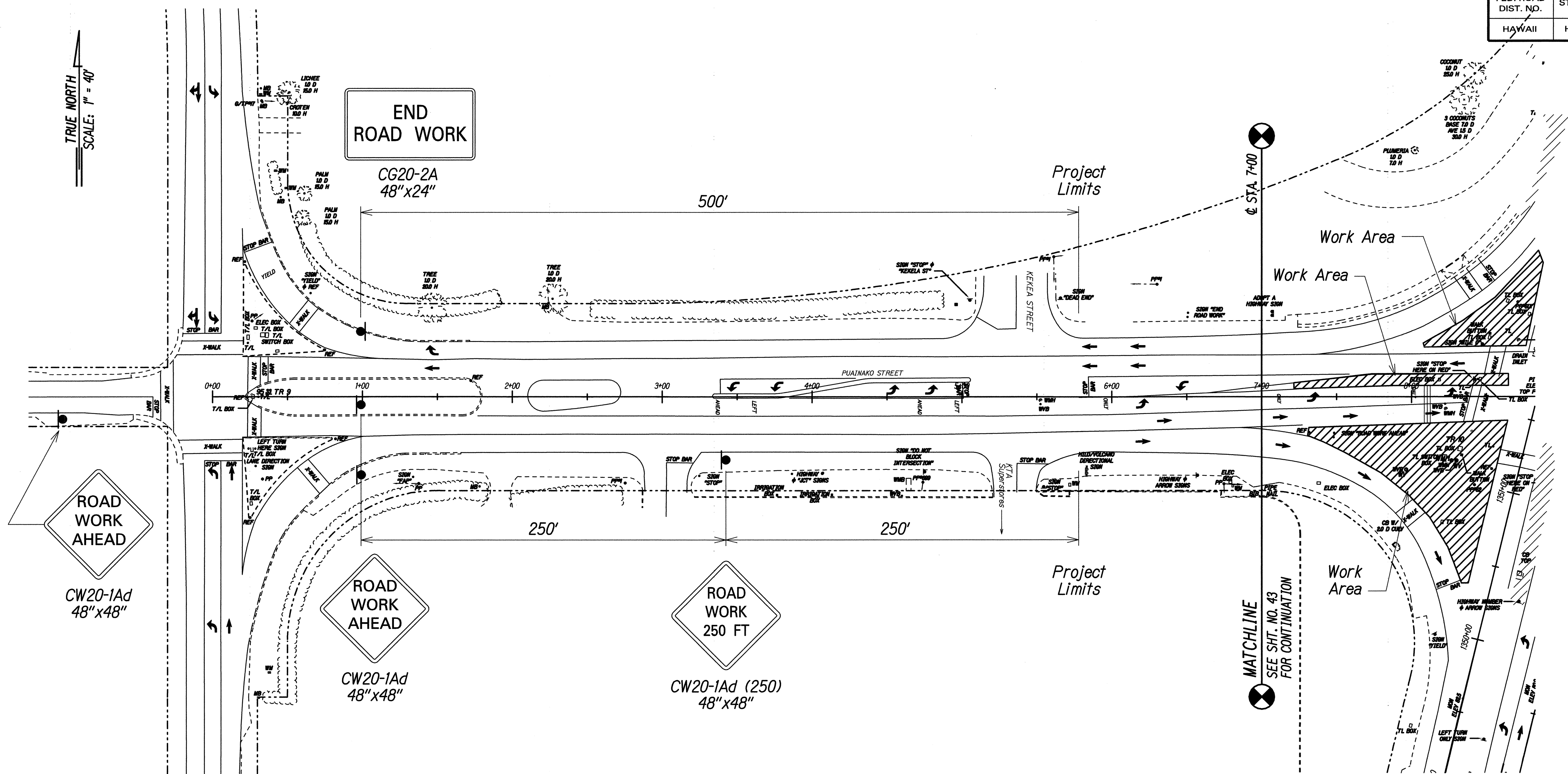
DATE	
SURVEY PLOTTED BY	
DRAWN BY	
DESIGNED BY	
CHECKED BY	
NOTE BOOK	
No.	X



THIS WORK WAS PREPARED BY ME OR UNDER MY SUPERVISION AND CONSTRUCTION OF THIS PROJECT WILL BE UNDER MY OBSERVATION.
DATE: *May 2000*

STATE OF HAWAII
DEPARTMENT OF TRANSPORTATION
HIGHWAYS DIVISION
TRAFFIC CONTROL PLANS
PUAINAKO STREET IMPROVEMENTS, PHASE 1
Kilauea Ave. to Kanoelehua Ave.
Project No. 2000E-01-00
Scale: N.T.S. Date: May, 2000
SHEET No. 3 OF 5 SHEETS

FED. ROAD DIST. NO.	STATE	PROJ. NO.	FISCAL YEAR	SHEET NO.	TOTAL SHEETS
HAWAII	HAW.	2000E-01-00	2000	45	60

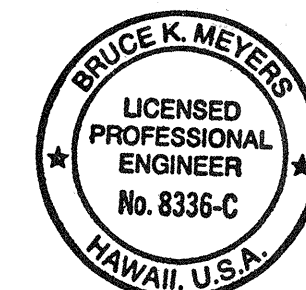


NOTES:

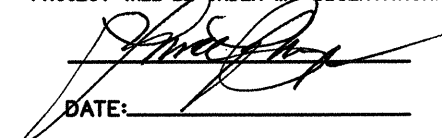
1. Traffic control plan shall be in accordance with State of Hawaii, Department of Transportation "Standards for Road Construction" and U.S. Department of Transportation "Manual on Uniform Traffic Control Devices (MUTCD).
2. Devices and Signs shall be in accordance with the U.S. Department of Transportation MUTCD.
3. Quality of devices and signs shall be in accordance with American Traffic Safety Services Association (ATSSA) "Quality Standards for Work Zone Traffic Control Devices".
4. Posted Speed Limit: 35 MPH

LEGEND

-  Leveling Areas
-  Traffic Cone or Delineator



THIS WORK WAS PREPARED BY ME OR UNDER MY SUPERVISION AND CONSTRUCTION OF THIS PROJECT WILL BE UNDER MY OBSERVATION.

DATE: 

STATE OF HAWAII
DEPARTMENT OF TRANSPORTATION
HIGHWAYS DIVISION

TRAFFIC CONTROL PLANS

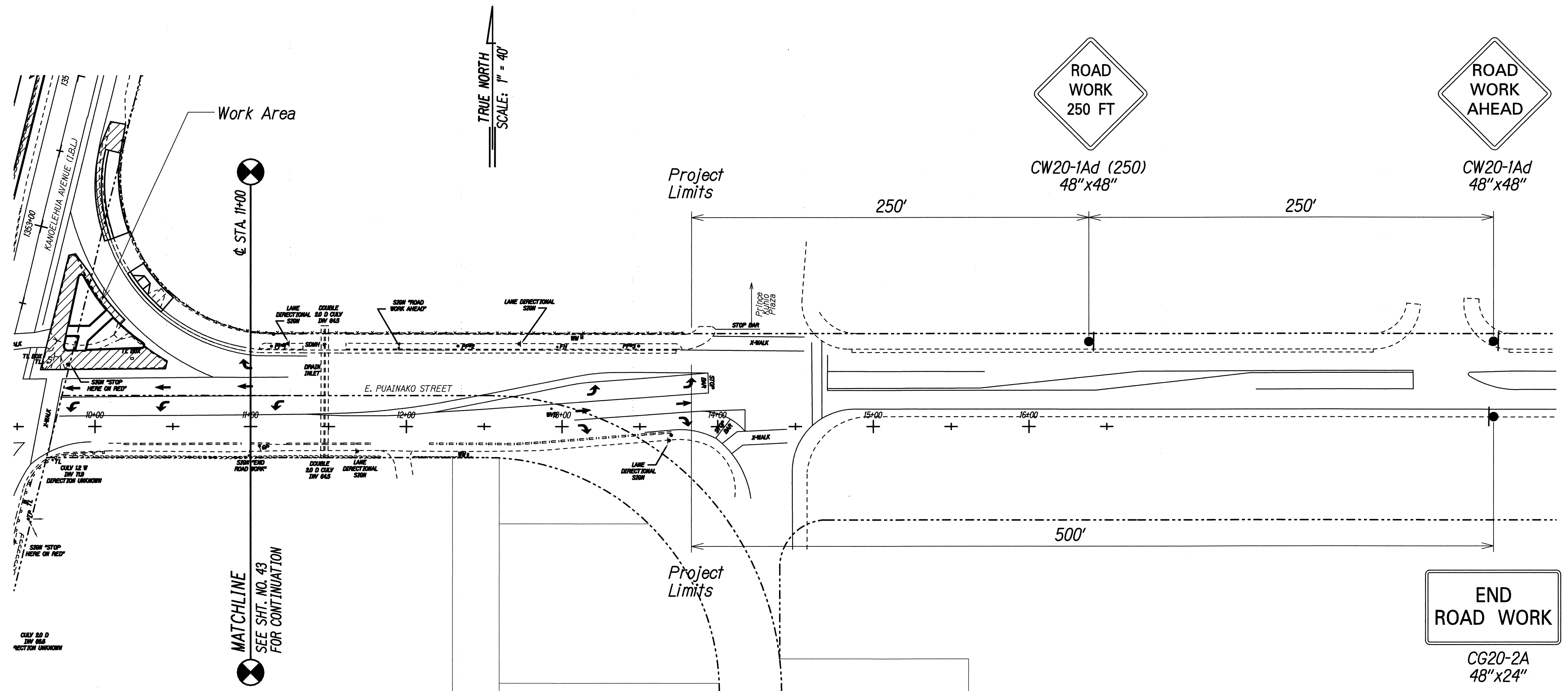
PUAINAKO STREET IMPROVEMENTS, PHASE 1
Kilauea Ave. to Kanoelohua Ave.
Project No. 2000E-01-00
Scale: N.T.S. Date: May, 2000

SHEET No. 4 OF 5 SHEETS

ORIGINAL PLAN	DATE
SURVEY PLOTTED BY	
DRAWN BY	
DESIGNED BY	
NOTED BY	
CHECKED BY	

99050/4/peate04.dgn

FED. ROAD DIST. NO.	STATE	PROJ. NO.	FISCAL YEAR	SHEET NO.	TOTAL SHEETS
HAWAII	HAW.	2000E-01-00	2000	46	60

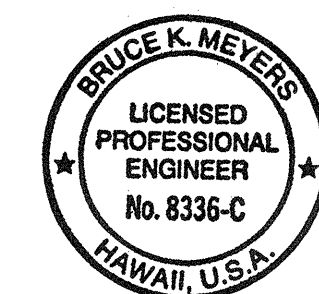


NOTES:

1. Traffic control plan shall be in accordance with State of Hawaii, Department of Transportation "Standards for Road Construction" and U.S. Department of Transportation "Manual on Uniform Traffic Control Devices (MUTCD).
2. Devices and Signs shall be in accordance with the U.S. Department of Transportation MUTCD.
3. Quality of devices and signs shall be in accordance with American Traffic Safety Services Association (ATSSA) "Quality Standards for Work Zone Traffic Control Devices".
4. Posted Speed Limit: 35 MPH

LEGEND

- Leveling Areas
- Traffic Cone or Delineator



THIS WORK WAS PREPARED BY ME OR UNDER MY SUPERVISION AND CONSTRUCTION OF THIS PROJECT WILL BE UNDER MY OBSERVATION.

DATE: *[Signature]*

STATE OF HAWAII
DEPARTMENT OF TRANSPORTATION
HIGHWAYS DIVISION

TRAFFIC CONTROL PLAN

PUAINAKO STREET IMPROVEMENTS, PHASE 1
Kilauea Ave. to Kanoiehua Ave.

Project No. 2000E-01-00
Scale: N.T.S. Date: May, 2000

SHEET No. 5 OF 5 SHEETS

ORIGINAL PLAN	DATE
SURVEY PLOTTED BY	
DRAWN BY	
DESIGNED BY	
QUANTITIES BY	
CHECKED BY	

99050/4pua05.dgn