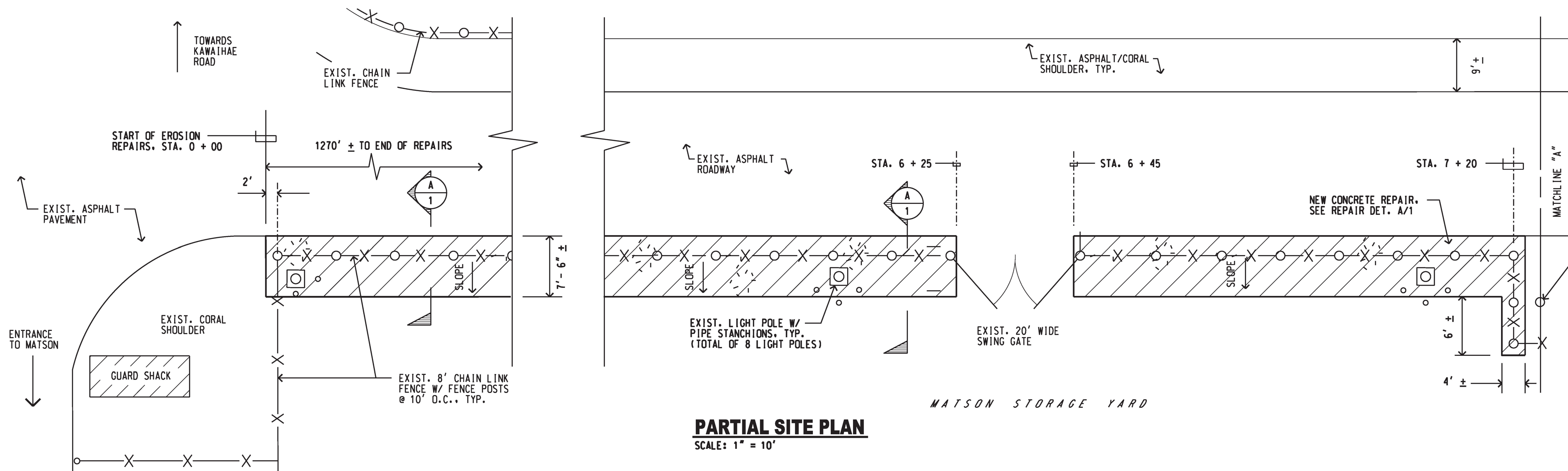


GENERAL SITE PLAN - KAWAIHAE HARBOR

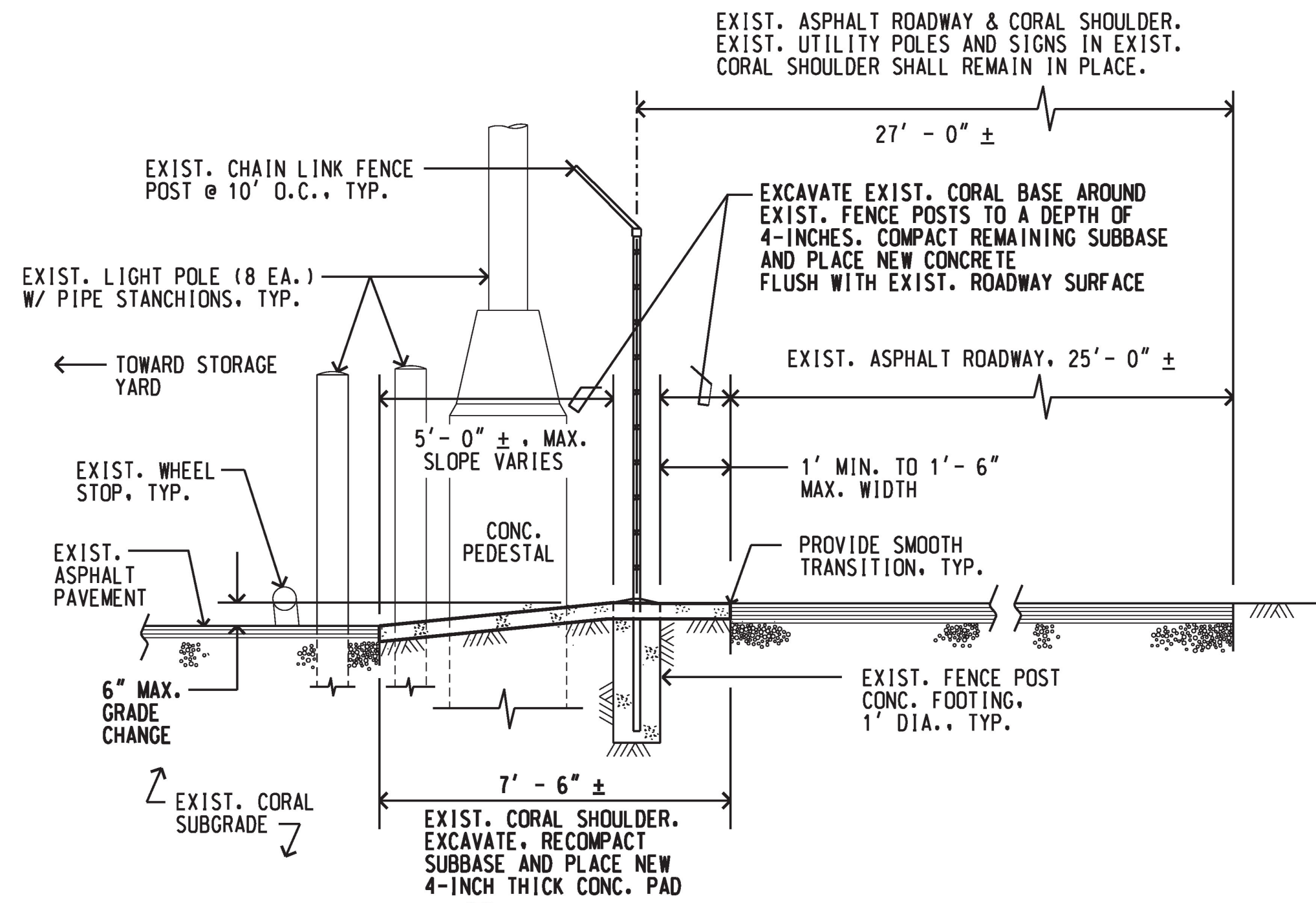
SCALE : 1" = 100'



PARTIAL SITE PLAN

SCALE: 1" = 10'

NOTE: NEW CONCRETE SHALL BE 3,000 PSI ~~WITH FIBERS~~. SLOPE CONCRETE TO AVOID PONDING. FENCE ALIGNMENT VARIES THROUGHOUT LENGTH OF FENCE.



**A
1** EROSION REPAIR DETAIL

GENERAL NOTES:

- CONTRACTOR SHALL VERIFY CONDITIONS AND DIMENSIONS IN THE FIELD PRIOR TO ORDERING MATERIALS. CONTRACTOR SHALL EXERCISE CAUTION TO PREVENT DAMAGE TO EXISTING STRUCTURES, UTILITIES AND EQUIPMENT IN THE PROJECT AREA.
- ALL WORK SHALL BE COORDINATED WITH THE HARBORS DIVISION HAWAII DISTRICT MANAGER AND THE CONSTRUCTION ENGINEER.
- ALL STRUCTURES AND PORTIONS OF STRUCTURES SHOWN ON THE PLAN ARE EXISTING UNLESS SPECIFICALLY NOTED. EXISTING CONDITIONS SHOWN ARE BASED ON THE BEST AVAILABLE INFORMATION. NO GUARANTEE IS GIVEN THAT THEY ARE MORE THAN APPROXIMATELY CORRECT. CLEAR WITH HAWAII ONE CALL CENTER (HOCC) BEFORE EXCAVATION (811) OR (866)-423-7287.
- THE CONTRACTOR SHALL COMPLY WITH THE CLEAN WATER ACT AND THE STATE HARBORS DIVISION STORMWATER MANAGEMENT PROGRAM. NO POLLUTANT IS ALLOWED TO BE DISCHARGED DIRECTLY OR INDIRECTLY THROUGH THE HARBORS SMALL MS4 OR OTHER POTENTIAL PATHWAYS IN TO HARBOR WATERS.
- THE CONTRACTOR SHALL SUBMIT A SITE-SPECIFIC MANAGEMENT PRACTICE (BMPs) PLAN AND HEALTH & SAFETY PLAN TO HARBORS DIVISION ENGINEERING BRANCH PRIOR TO THE START OF ANY CONSTRUCTION WORK.
- IN CASE OF HAZARDOUS SUBSTANCE, OIL OR ENCOUNTER OF CONTAMINATED SOIL, CONTRACTOR SHALL NOTIFY THE APPROPRIATE FACILITY PERSONNEL, EMERGENCY RESPONSE AND REGULATORY AGENCIES FOLLOWING NOTIFICATION PROCEDURES, AND SHALL NOTIFY THE HARBORS DIVISION CONSTRUCTION ENGINEER IMMEDIATELY (1-8-1 WITHIN 24 HOURS). CONTACT INFORMATION MUST BE IN A LOCATION THAT IS READILY ACCESSIBLE AND AVAILABLE. CONTRACTOR SHALL NOTIFY THE HDOH HARBORS DIVISION ENGINEERING BRANCH ENVIRONMENTAL HOTLINE (808-587-1962) AND DESIGNATED HARBORS PROJECT ENGINEER OF ANY ILLICIT DISCHARGE AND/OR SPILL/RELEASE THAT OCCURS ONSITE.

REV		DATE	DESCRIPTION	BY	APPROVED
STATE OF HAWAII DEPARTMENT OF TRANSPORTATION HARBORS DIVISION					
JOB TITLE EROSION REPAIRS & VEHICLE BARRIER INSTALLATIONS KAWAIHAE HARBOR, KAWAIHAE, HAWAII					
SHEET TITLE SITE PLAN, PARTIAL PLAN, EROSION REPAIR DETAIL					
SUBMITTED BY: <i>Carol Johnson</i>			RECOMMENDED BY: <i>W. S. Sato</i>		
SECTION HEAD			ENGINEERING PROGRAM MANAGER		
DESIGNED BY: DCA		APPROVED BY: <i>W. S. Sato</i>		SHEET 1 OF 4 SHTS.	
DRAWN BY: DCA		FOR HARBORS ADMINISTRATOR			
CHECKED BY: AF		JOB NUMBER			
DATE: OCTOBER 2022		S 50207			
SCALE: AS SHOWN					