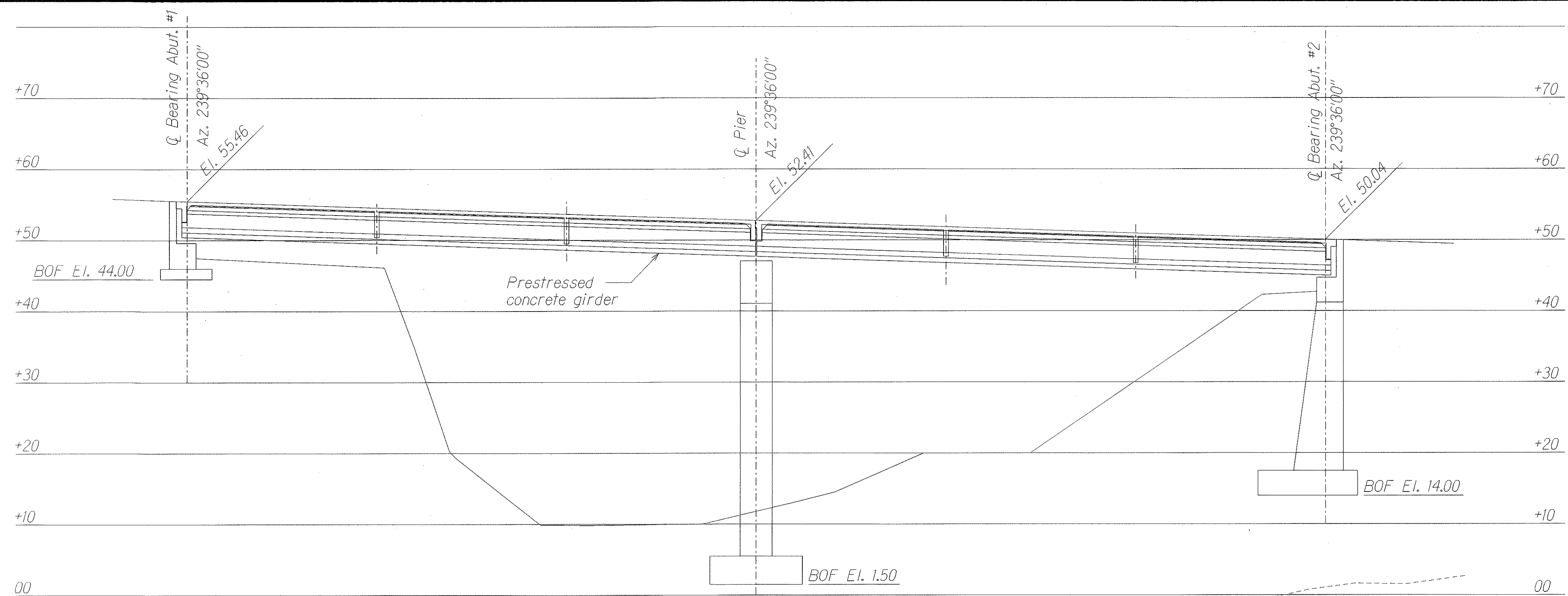
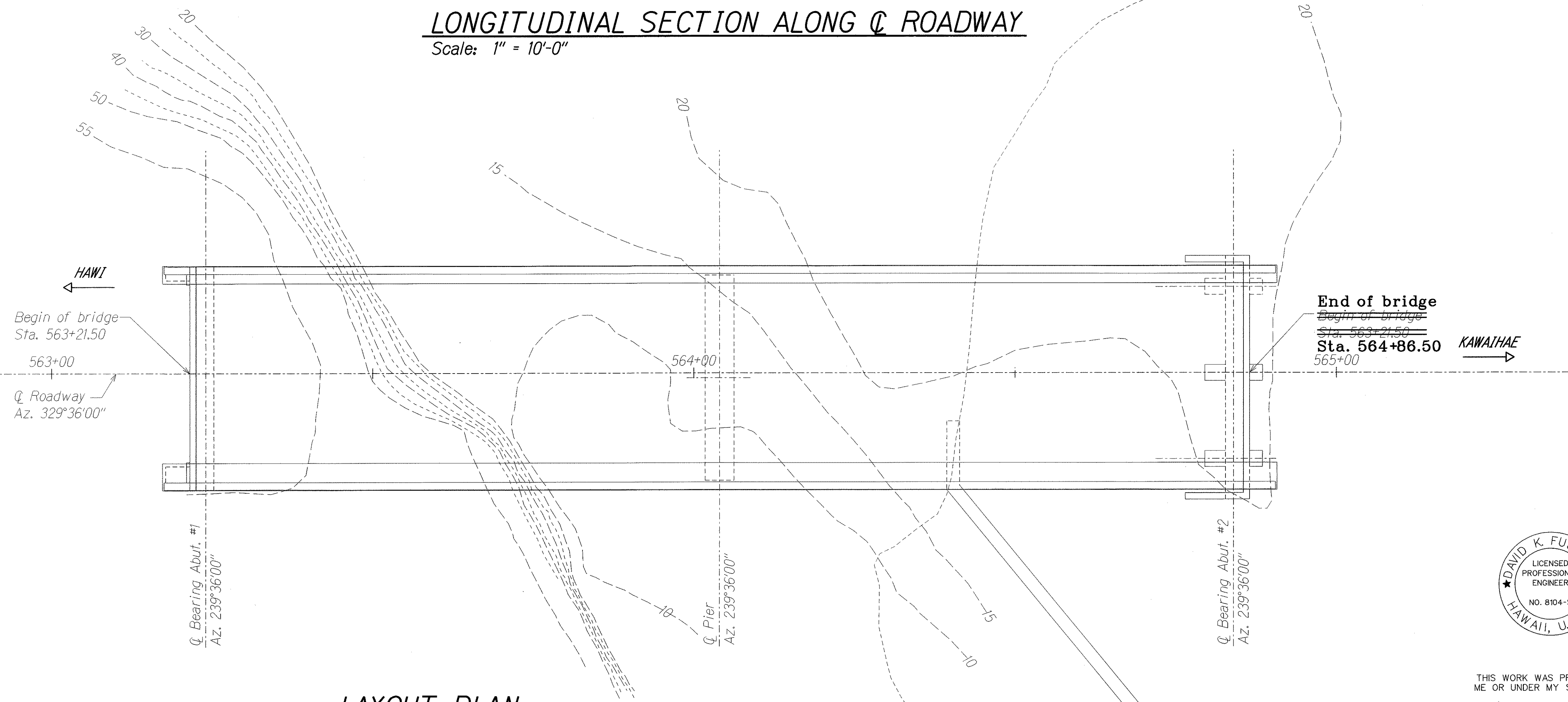


FED. ROAD DIST. NO.	STATE	FED. AID PROJ. NO.	FISCAL YEAR	SHEET NO.	TOTAL SHEETS
HAWAII	HAW.	ER-15(1)	2007	6	12



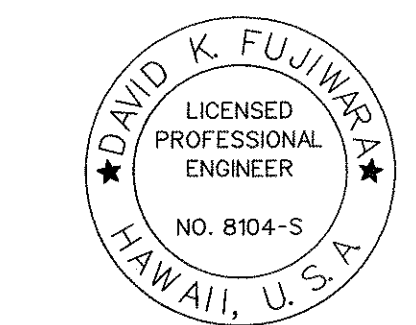
LONGITUDINAL SECTION ALONG Q ROADWAY
Scale: 1" = 10'-0"



LAYOUT PLAN
Scale: 1" = 10'-0"

LEGEND FOR AS-BUILT POSTINGS	
	Squiggly line for as-built deletion
	Double line for as-built deletion
Roadway	Text for as-built posting

SURVEY PLOTTED BY	DATE
DRAWN BY	
DESIGNED BY	
QUANTITIES BY	
CHECKED BY	

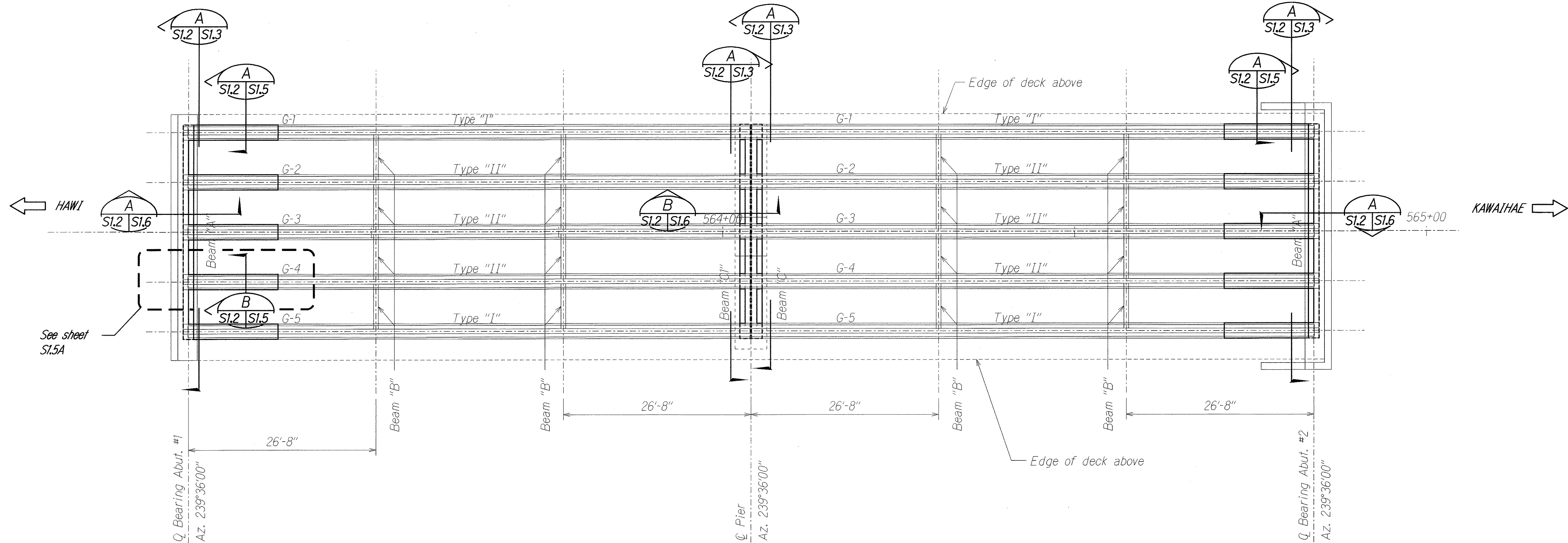


THIS WORK WAS PREPARED BY ME OR UNDER MY SUPERVISION.
David K. Fujiwara
SIGNATURE EXPIRATION DATE OF THE LICENSE 4-30-08

03-12-07	As Built - Modified Note
DATE	REVISION
STATE OF HAWAII DEPARTMENT OF TRANSPORTATION HIGHWAYS DIVISION LAYOUT PLAN AND LONGITUDINAL SECTION <i>Akoni Pule Highway</i> <i>Honokaa Bridge Repairs</i> <i>Federal-Aid Project No. ER-15(1)</i> Scale: As Noted Date: Dec. 8, 2006 SHEET No. 511 OF 8 SHEETS	

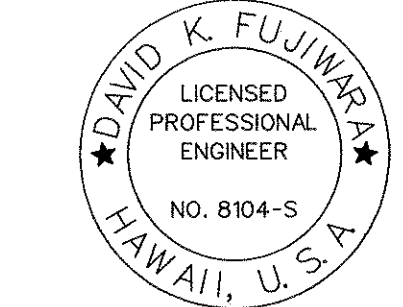
"AS-BUILT"

FED. ROAD DIST. NO.	STATE	FED. AID PROJ. NO.	FISCAL YEAR	SHEET NO.	TOTAL SHEETS
HAWAII	HAW.	ER-15(1)	2007	7	12



GIRDER FRAMING PLAN
 SCALE: 1/8" = 1'-0"

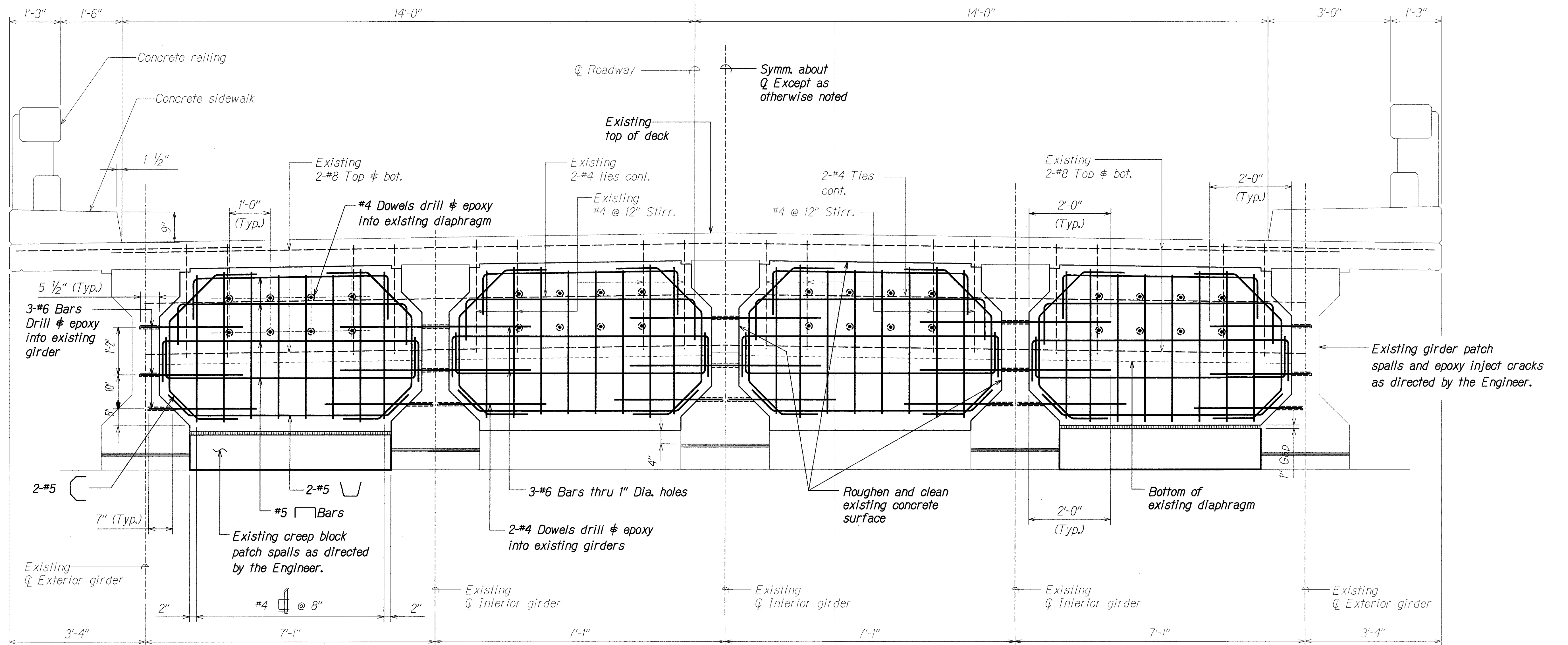
SURVEY PLOTTED BY	DATE
DRAWN BY	
DESIGNED BY	
QUANTITIES BY	
CHECKED BY	
ORIGINAL PLAN	
NOTE BOOK	
N.	



THIS WORK WAS PREPARED BY
 ME OR UNDER MY SUPERVISION.
 David K. Fujiwara
 SIGNATURE EXPIRATION DATE OF THE LICENSE 4-30-08

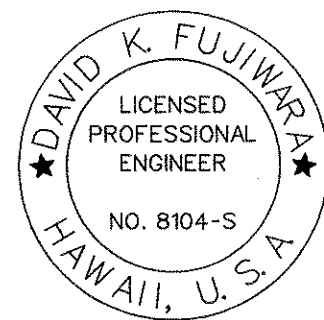
STATE OF HAWAII
 DEPARTMENT OF TRANSPORTATION
 HIGHWAYS DIVISION
GIRDER FRAMING PLAN
 Akoni Pule Highway
 Honokaa Bridge Repairs
 Federal-Aid Project No. ER-15(1)
 Scale: As Noted Date: Dec. 8, 2006
 SHEET No. SI.2 OF 8 SHEETS

FED. ROAD DIST. NO.	STATE	FED. AID PROJ. NO.	FISCAL YEAR	SHEET NO.	TOTAL SHEETS
HAWAII	HAW.	ER-15(1)	2007	8	12



TYPICAL BEAM SECTION A
 SCALE: $\frac{3}{4}" = 1'-0"$ S1.2 S1.3

DESIGNED BY	DATE
DRAWN BY	
CHECKED BY	
NOTED BY	
QUANTITIES BY	
CHECKED BY	



THIS WORK WAS PREPARED BY
 ME OR UNDER MY SUPERVISION.
David K. Fujiwara
 SIGNATURE EXPIRATION DATE OF THE LICENSE 4-30-08

STATE OF HAWAII
 DEPARTMENT OF TRANSPORTATION
 HIGHWAYS DIVISION

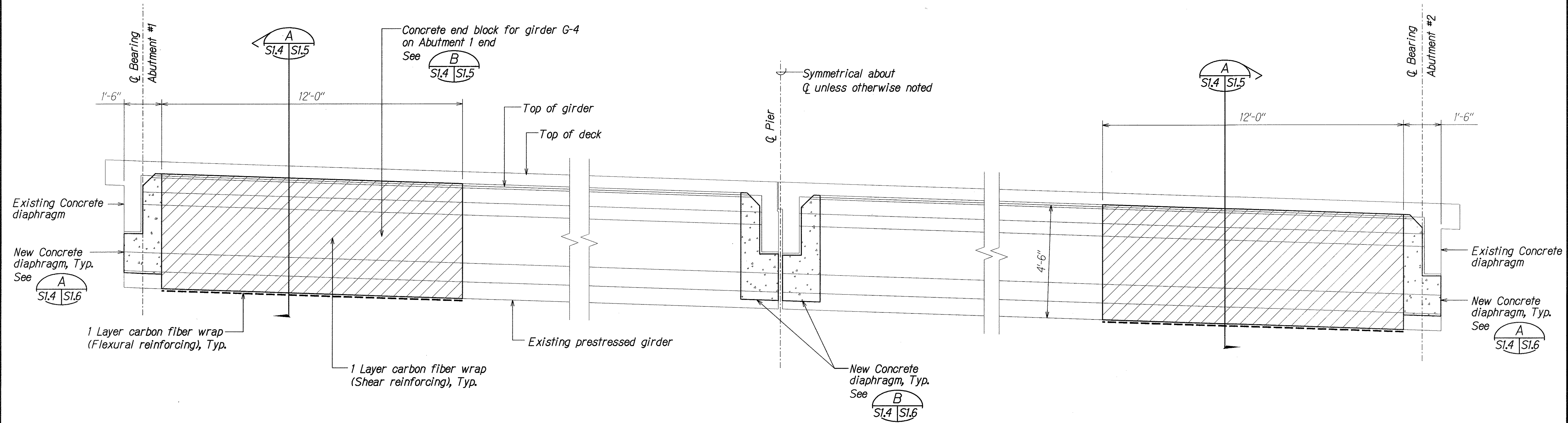
TYPICAL BEAM SECTION

*Akoni Pule Highway
 Honokaa Bridge Repairs
 Federal-Aid Project No. ER-15(1)*

Scale: As Noted Date: Dec. 8, 2006

SHEET No. S1.3 OF 8 SHEETS

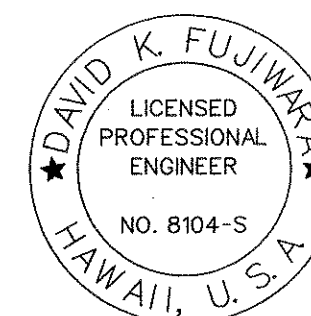
FED. ROAD DIST. NO.	STATE	FED. AID PROJ. NO.	FISCAL YEAR	SHEET NO.	TOTAL SHEETS
HAWAII	HAW.	ER-15(1)	2007	9	12



TYPICAL GIRDER DETAIL

Scale: 1/2" = 1'-0"

SURVEY PLOTTED BY	DATE
DRAWN BY	
DESIGNED BY	
QUANTITIES BY	
CHECKED BY	
ORIGINAL PLAN	
NOTE BOOK	
N.	



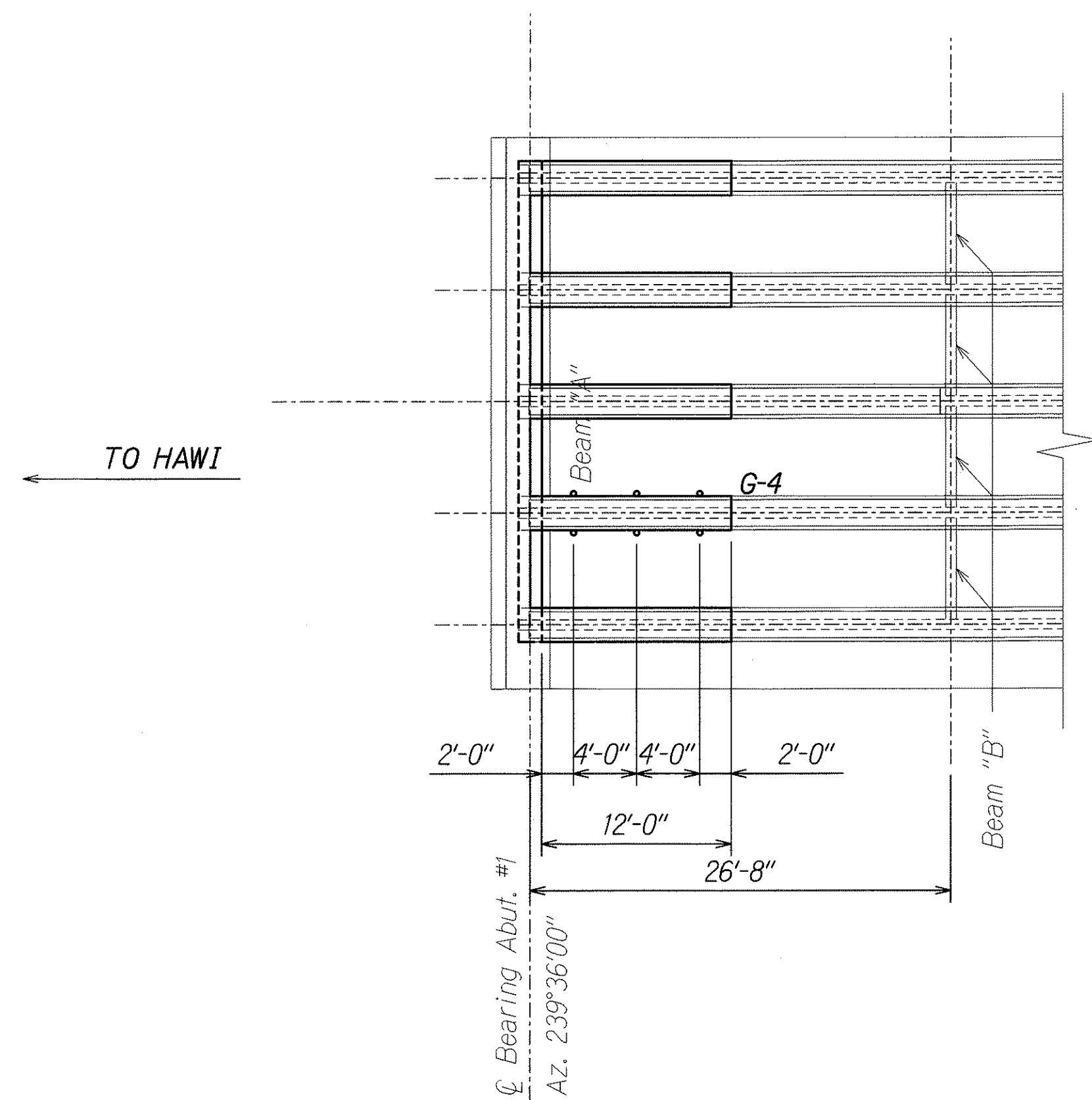
THIS WORK WAS PREPARED BY
ME OR UNDER MY SUPERVISION.
David K. Fujiwara
SIGNATURE EXPIRATION DATE OF THE LICENSE 4-30-08

STATE OF HAWAII
DEPARTMENT OF TRANSPORTATION
HIGHWAYS DIVISION

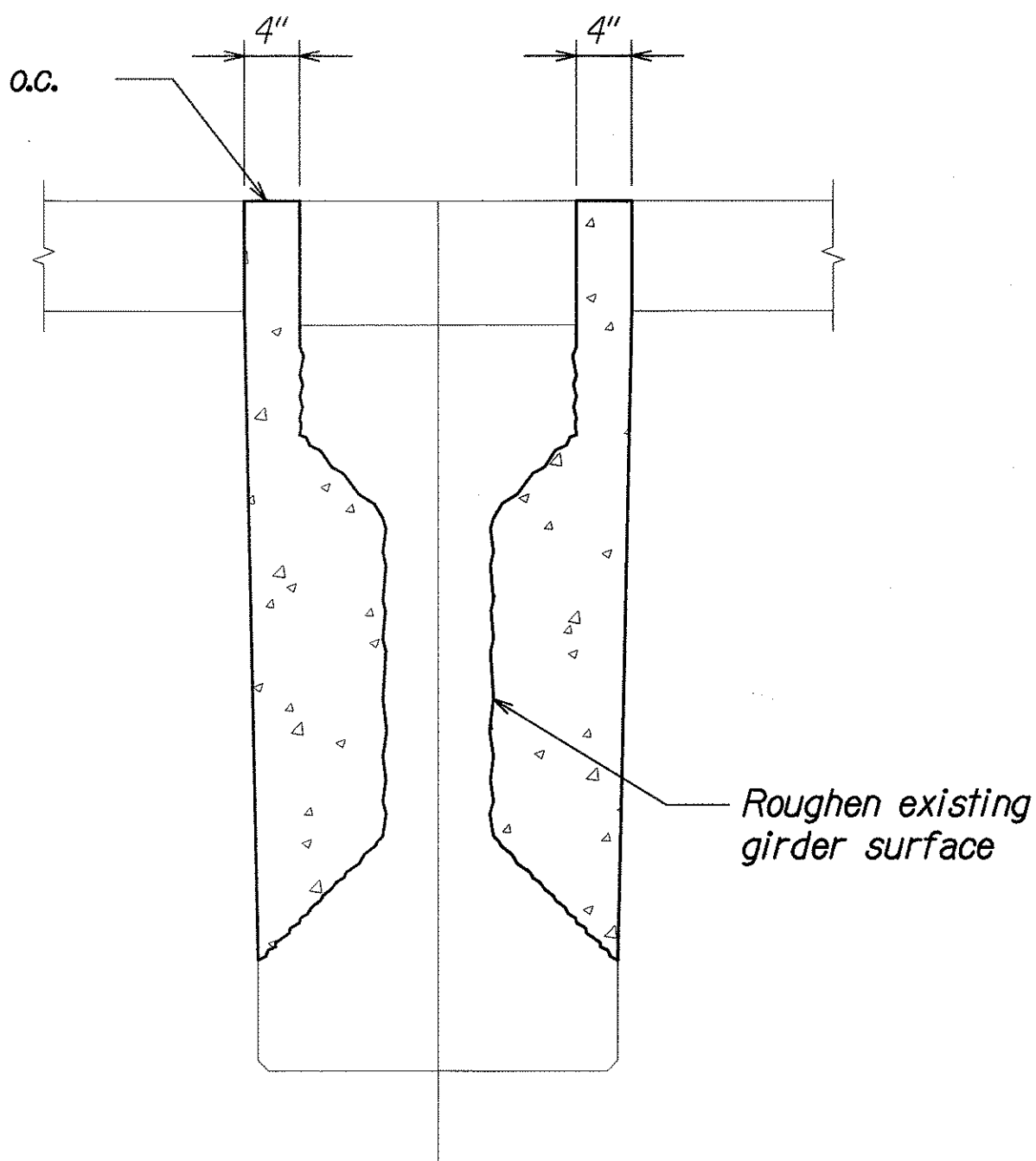
TYPICAL GIRDER DETAIL

Akoni Pule Highway
Honokoa Bridge Repairs
Federal-Aid Project No. ER-15(1)
Scale: **As Noted** Date: Dec. 8, 2006
SHEET No. **SI.4** OF **8** SHEETS

FED. ROAD DIST. NO.	STATE	FED. AID PROJ. NO.	FISCAL YEAR	SHEET NO.	TOTAL SHEETS
HAWAII	HAW.	ER-15(1)	2007	11	12



4" Dia. core hole @ 4'-0" o.c.
3 each / side
of G4 girder



Girder G4 Repair Notes: (Abutment #1, Hawi End Only)

1. Chip girder G4 to remove all loose concrete.
2. Roughen the surface of girder G4 which will be in contact with the repair grout by bush hammering. (Roughen each side of girder for a distance of 12' from the new diaphragm at Abutment #1)
3. Embed rebar dowels 4" into the web of girder G4 using a 2 component epoxy.
4. Brush on Tammsweld bonding agent onto the roughened girder surfaces.
5. Close forms and pour repair material from the bridge deck through 3 ea x 4" diameter cored holes spaced 4' apart on each side of the girder. The repair material shall be Tamms NC Grout extended with pea gravel. Add water and mix in accordance with the manufacturer's recommendations. A technical representative from Tamms shall be on site to assist.
6. Periodically tap the forms with a hammer during the pour to assure consolidation of the grout.
7. Both lanes may be opened to traffic 48 hours after completion of the grout pour.

G-4 GIRDER (ABUTMENT 1 END ONLY)

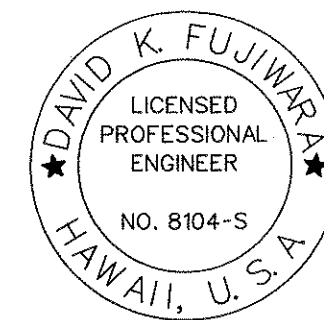
SCALE: 1" = 1'-0"

A
SI.5A SI.5A

PARTIAL GIRDER FRAMING PLAN

SCALE: 1/8" = 1'-0"

SURVEY PLOTTED BY	DATE
DRAWN BY	
DESIGNED BY	
QUANTITIES BY	
CHECKED BY	
ORIGINAL PLAN	
NOTE BOOK	
N.	



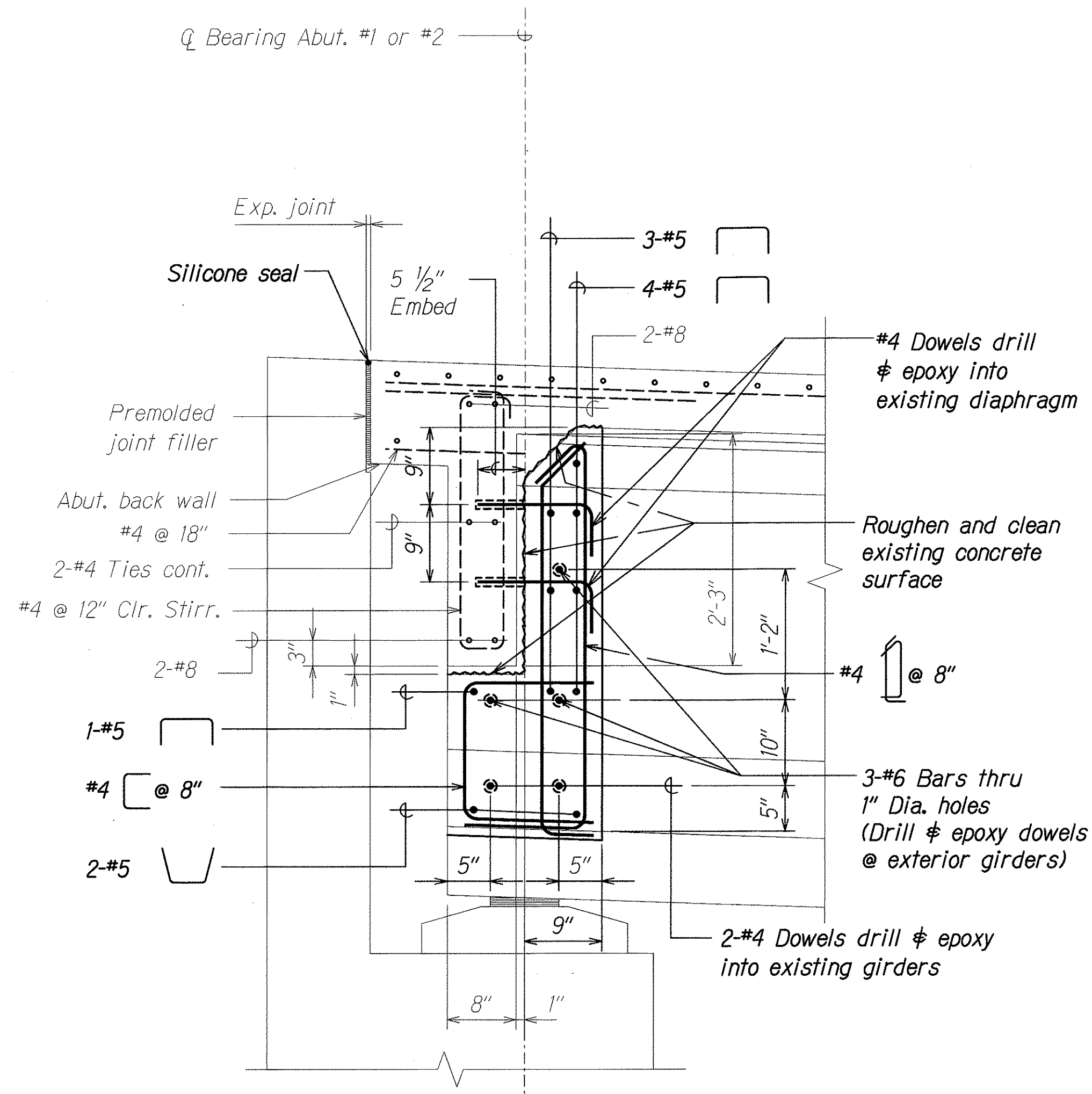
THIS WORK WAS PREPARED BY
ME OR UNDER MY SUPERVISION.

Signature: David K. Fujiwara
4-30-08
SIGNATURE EXPIRATION DATE OF THE LICENSE

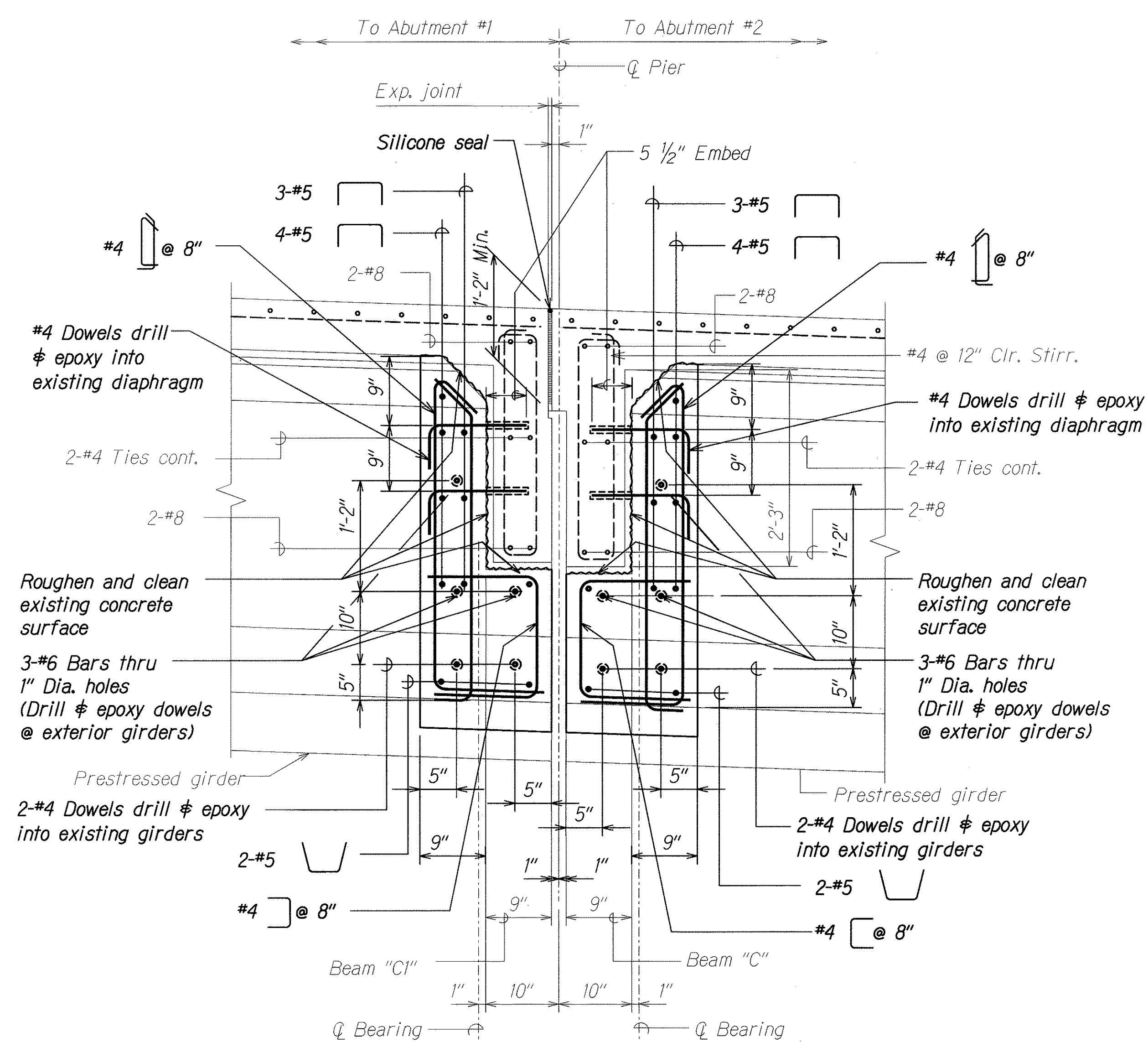
STATE OF HAWAII
DEPARTMENT OF TRANSPORTATION
HIGHWAYS DIVISION
GIRDER FRAMING PLAN
AND G4 REPAIR
Akoni Pule Highway
Honokaa Bridge Repairs
Federal-Aid Project No. ER-15(1)

Scale: As Noted Date: Dec. 8, 2006
SHEET No. SI.5A OF 8 SHEETS

FED. ROAD DIST. NO.	STATE	FED. AID PROJ. NO.	FISCAL YEAR	SHEET NO.	TOTAL SHEETS
HAWAII	HAW.	ER-15(1)	2007	12	12

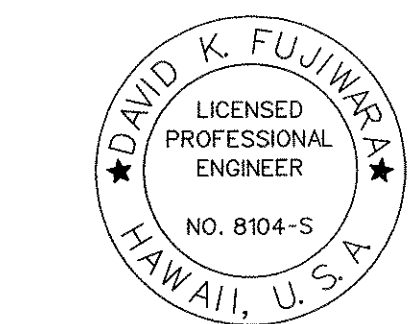


SECTION AT ABUTMENTS A
SCALE: 1" = 1'-0"



SECTION AT PIER B
SCALE: 1" = 1'-0"

ORIGINAL PLAN	SURVEY PLOTTED BY	DATE
NOTED BOOK	DRAWN BY	
	DESIGNED BY	
	CHECKED BY	



THIS WORK WAS PREPARED BY ME OR UNDER MY SUPERVISION.
Signature: David K. Fujiwara
EXPIRATION DATE OF THE LICENSE: 4-30-08

STATE OF HAWAII
DEPARTMENT OF TRANSPORTATION
HIGHWAYS DIVISION
DIAPHRAGM SECTIONS
Akoni Pule Highway
Honokaa Bridge Repairs
Federal-Aid Project No. ER-15(1)
Scale: As Noted Date: Dec. 8, 2006
SHEET No. **SL6** OF 8 SHEETS