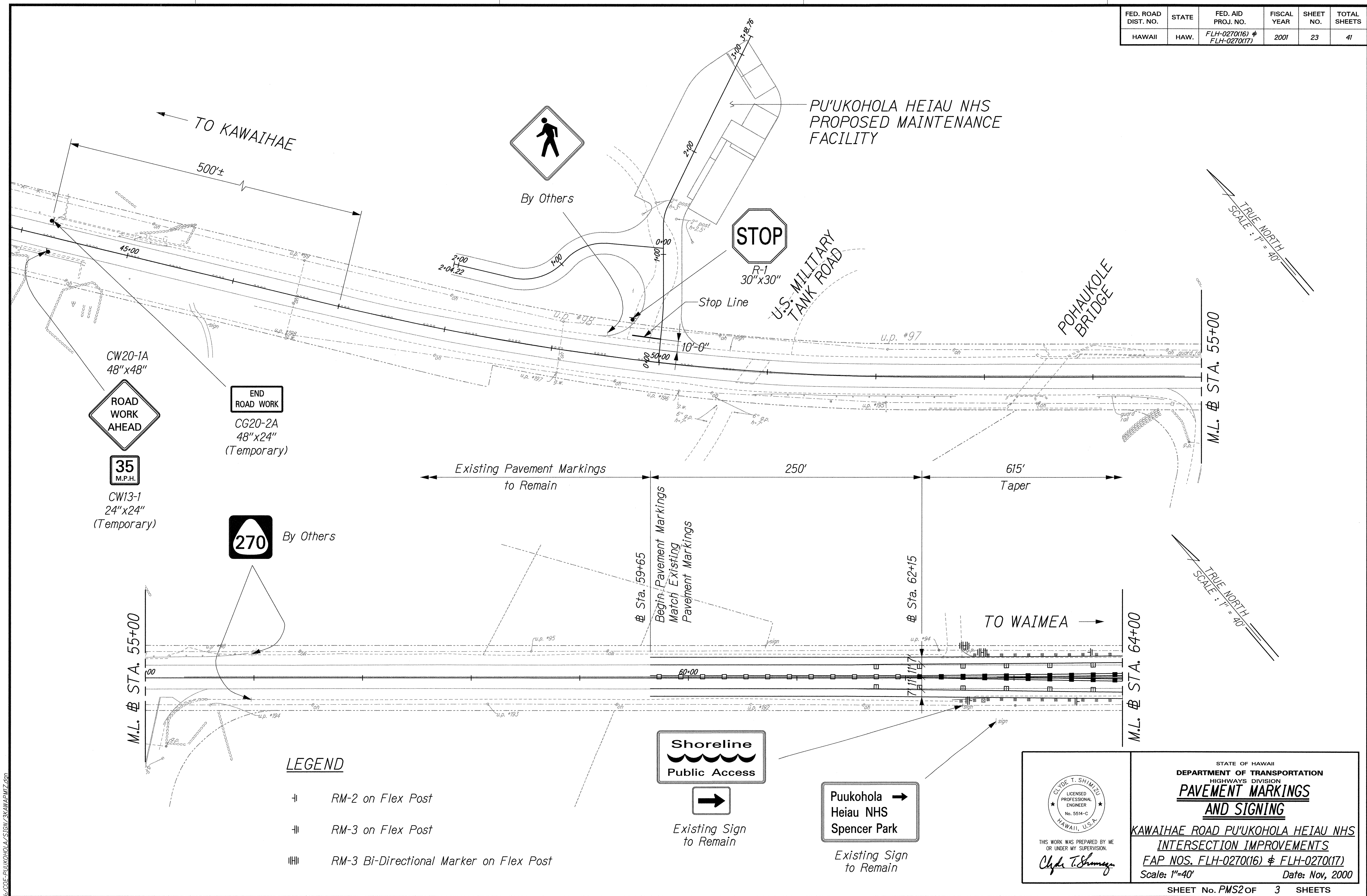


FED. ROAD DIST. NO.	STATE	FED. AID PROJ. NO.	FISCAL YEAR	SHEET NO.	TOTAL SHEETS
HAWAII	HAW.	FLH-0270(16) & FLH-0270(17)	2001	23	41



CW20-1A
48" x 48"

ROAD WORK AHEAD

CG20-2A
48" x 24"
(Temporary)

END ROAD WORK

CW13-1
24" x 24"
(Temporary)

35 M.P.H.

270 By Others

- LEGEND**
- ⊥ RM-2 on Flex Post
 - ⊥⊥ RM-3 on Flex Post
 - ⊥⊥⊥ RM-3 Bi-Directional Marker on Flex Post

Shoreline Public Access

Existing Sign to Remain

Puukohola Heiau NHS Spencer Park

Existing Sign to Remain

SURVEY PLOTTED BY	DATE
DESIGNED BY	
TRACED BY	
NOTE BOOK	
DESIGNED BY	
QUANTITIES BY	
CHECKED BY	
No.	

CLIVE T. SHIMIZU
LICENSED PROFESSIONAL ENGINEER
No. 5514-C
HAWAII, U.S.A.

THIS WORK WAS PREPARED BY ME OR UNDER MY SUPERVISION.
Clive T. Shimizu

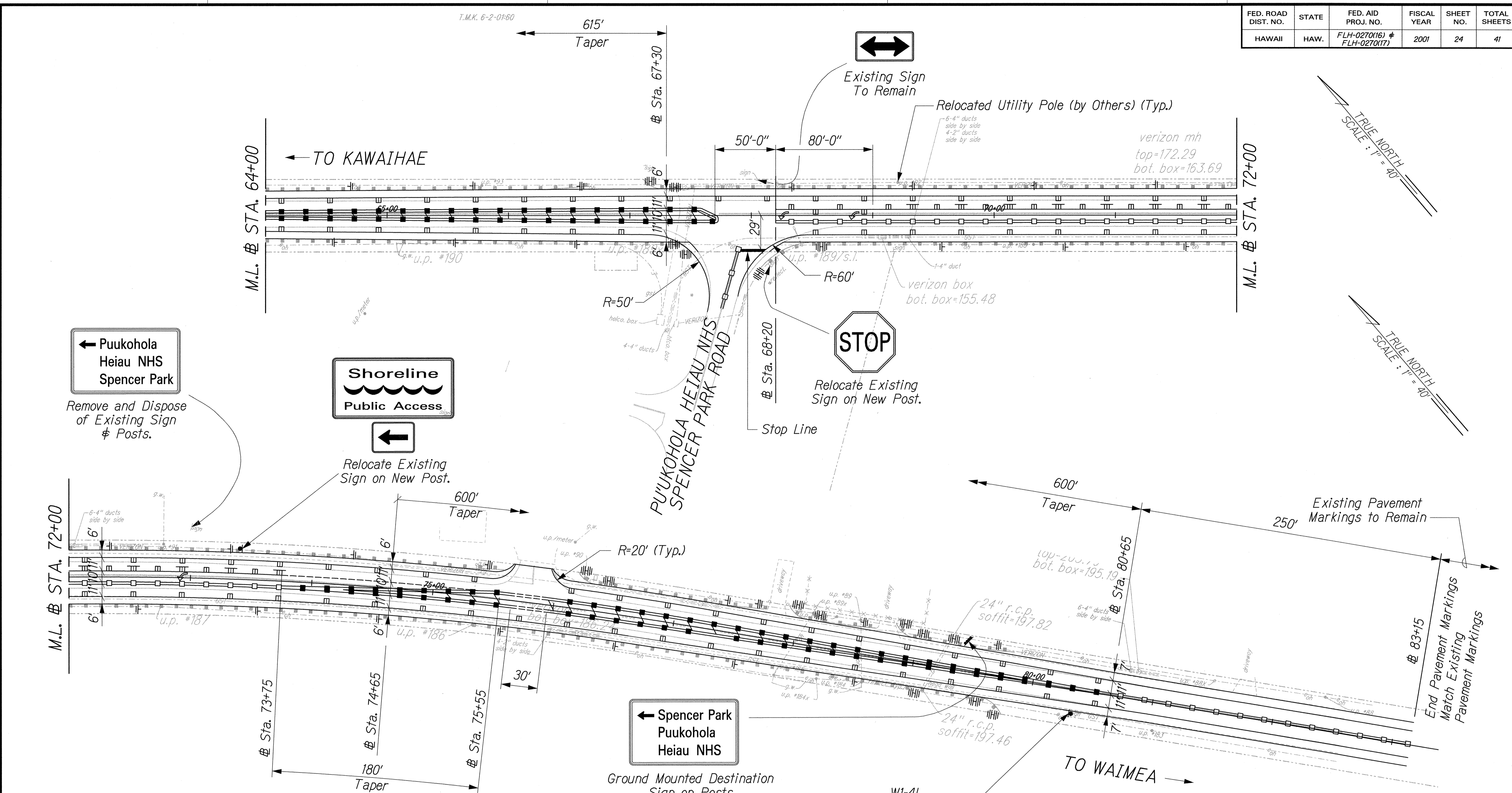
STATE OF HAWAII
DEPARTMENT OF TRANSPORTATION
HIGHWAYS DIVISION
PAVEMENT MARKINGS AND SIGNING

KAWAIHAE ROAD PU'UKOHOLA HEIAU NHS INTERSECTION IMPROVEMENTS

FAP NOS. FLH-0270(16) & FLH-0270(17)
Scale: 1"=40' Date: Nov, 2000

SHEET No. PMS2 OF 3 SHEETS

FED. ROAD DIST. NO.	STATE	FED. AID PROJ. NO.	FISCAL YEAR	SHEET NO.	TOTAL SHEETS
HAWAII	HAW.	FLH-0270(16) & FLH-0270(17)	2001	24	41



← Puukohola Heiau NHS Spencer Park

Remove and Dispose of Existing Sign & Posts.

Shoreline Public Access

Relocate Existing Sign on New Post.

← Spencer Park Puukohola Heiau NHS

Ground Mounted Destination Sign on Posts
For Detail, see Sheet PMS 1

LEGEND

- ⊥ RM-2 on Flex Post
- ⊥⊥ RM-3 on Flex Post
- ⊥⊥⊥ RM-3 Bi-Directional Marker on Flex Post

NOTE:

Locate existing electrical and telecommunication ductlines prior to installation of sign posts. Exercise caution when installing sign posts to prevent damage to existing ductlines.



DATE	
SURVEY PLOTTED BY	
TRACED BY	
DESIGNED BY	
QUANTITIES BY	
CHECKED BY	
ORIGINAL PLAN	
NOTE BOOK	
No.	

1/22/03	Revised RM-2 TO RM-3
Date	Revision

CLYDE T. SHIMIZU
LICENSED PROFESSIONAL ENGINEER
No. 5514-C
HAWAII, U.S.A.

THIS WORK WAS PREPARED BY ME OR UNDER MY SUPERVISION.
Clyde T. Shimizu

STATE OF HAWAII
DEPARTMENT OF TRANSPORTATION
HIGHWAYS DIVISION
PAVEMENT MARKINGS AND SIGNING

KAWAIHAE ROAD PU'UKOHOLA HEIAU NHS
INTERSECTION IMPROVEMENTS
FAP NOS. FLH-0270(16) & FLH-0270(17)
Scale: 1"=40' Date: Nov, 2000