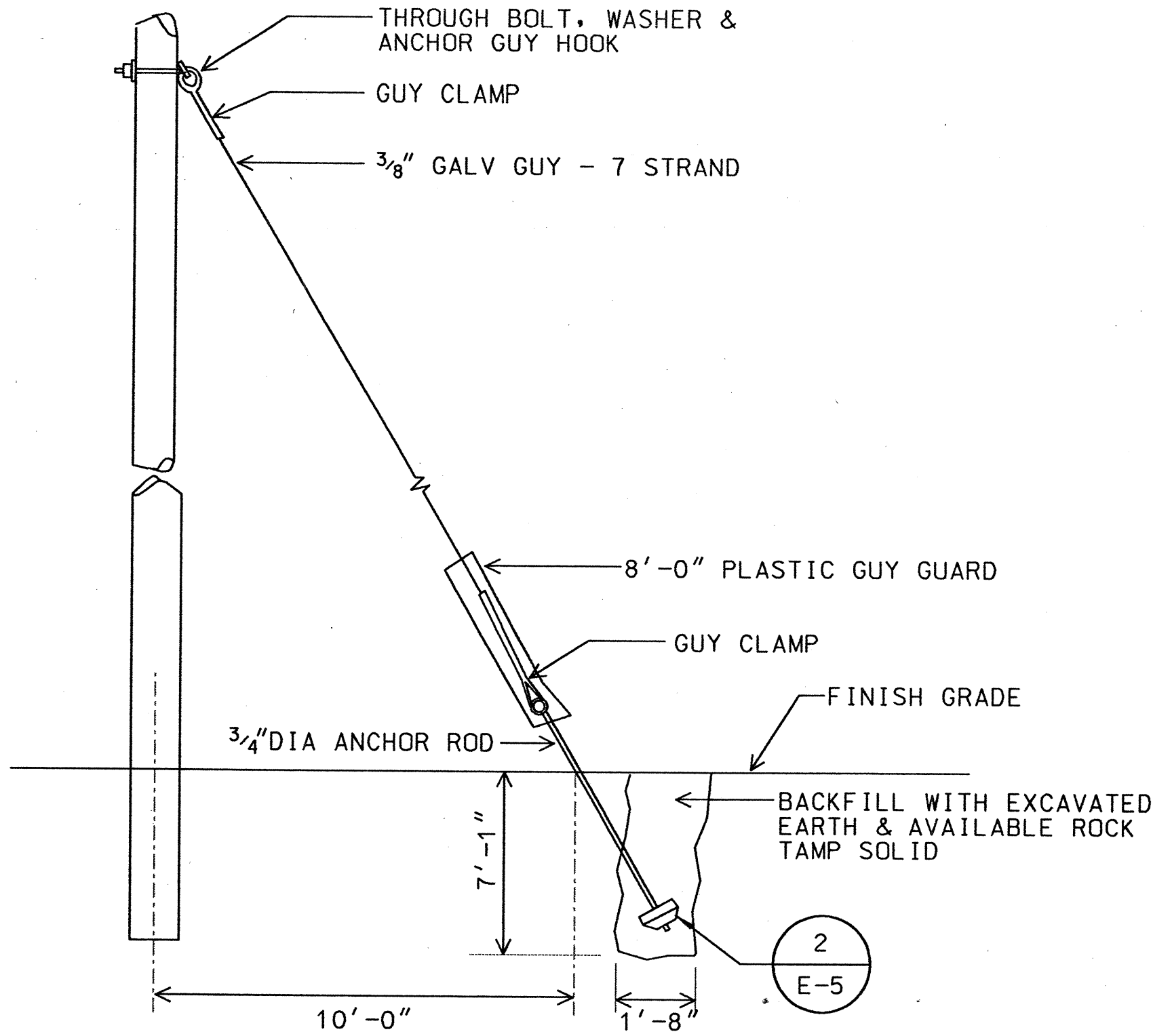
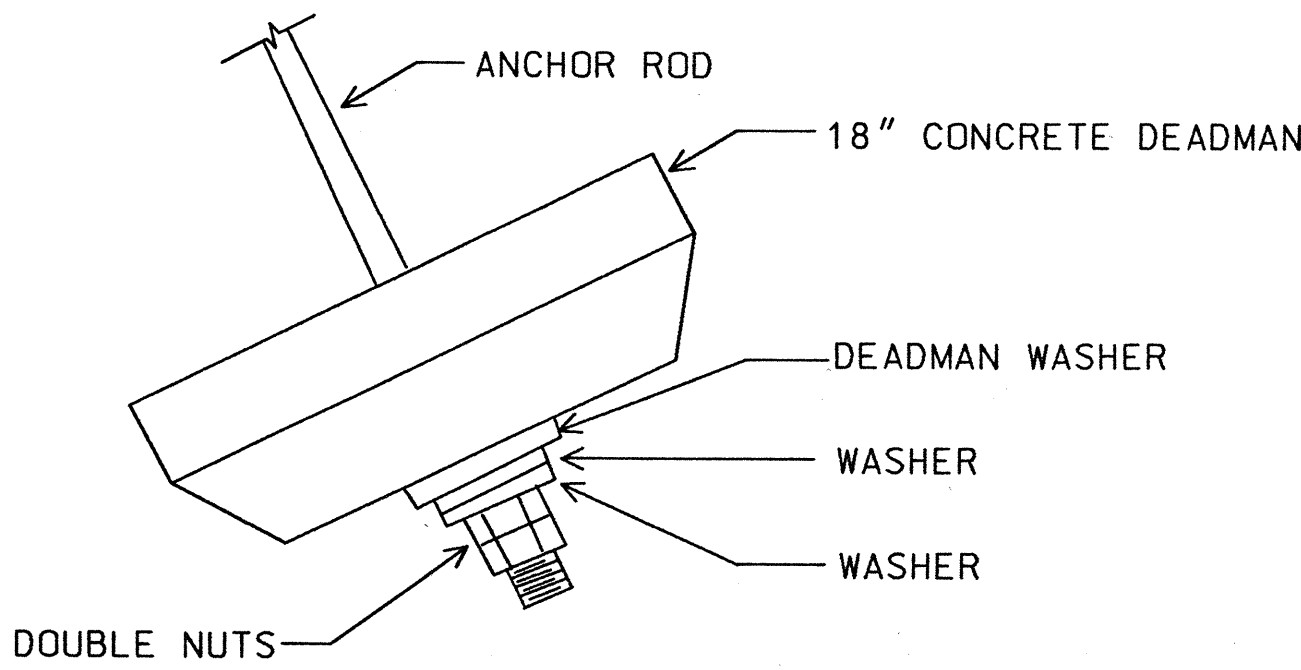




FED. ROAD DIST. NO.	STATE	FED. AID PROJ. NO.	FISCAL YEAR	SHEET NO.	TOTAL SHEETS
HAWAII	HAW.	FLH-0270(16) & FLH-0270(17)	2000	31	41

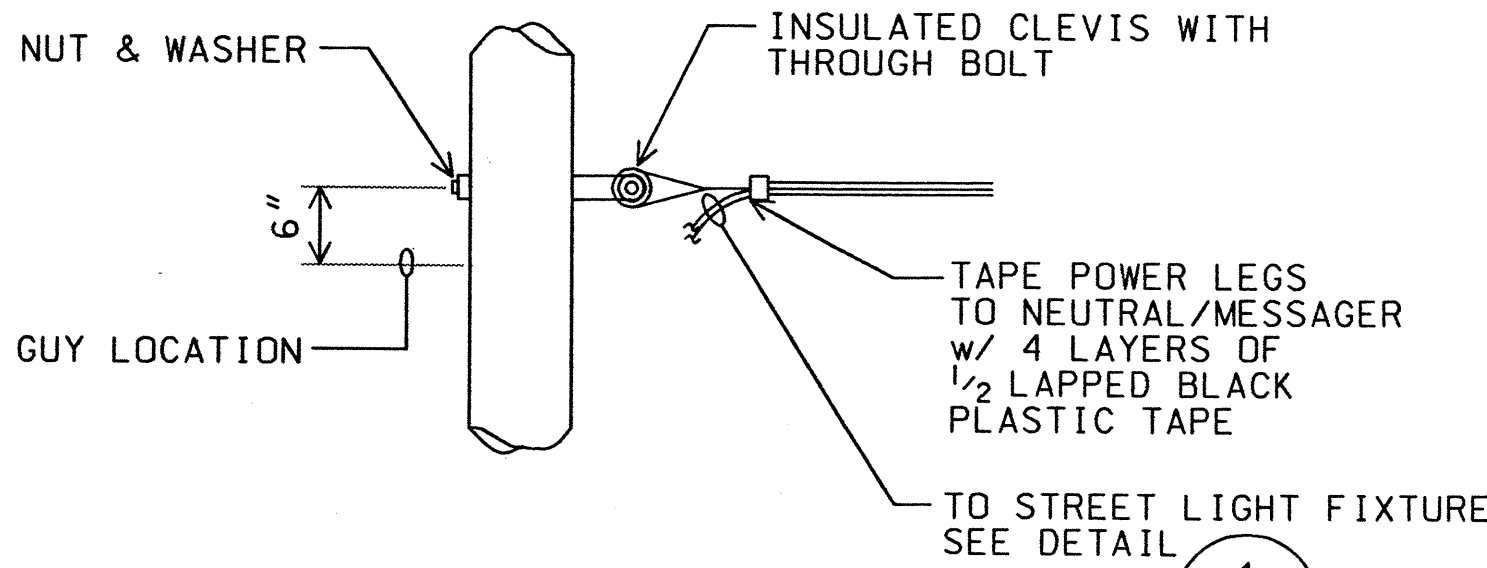


1 GUY ANCHOR DETAIL  
E-5 NTS

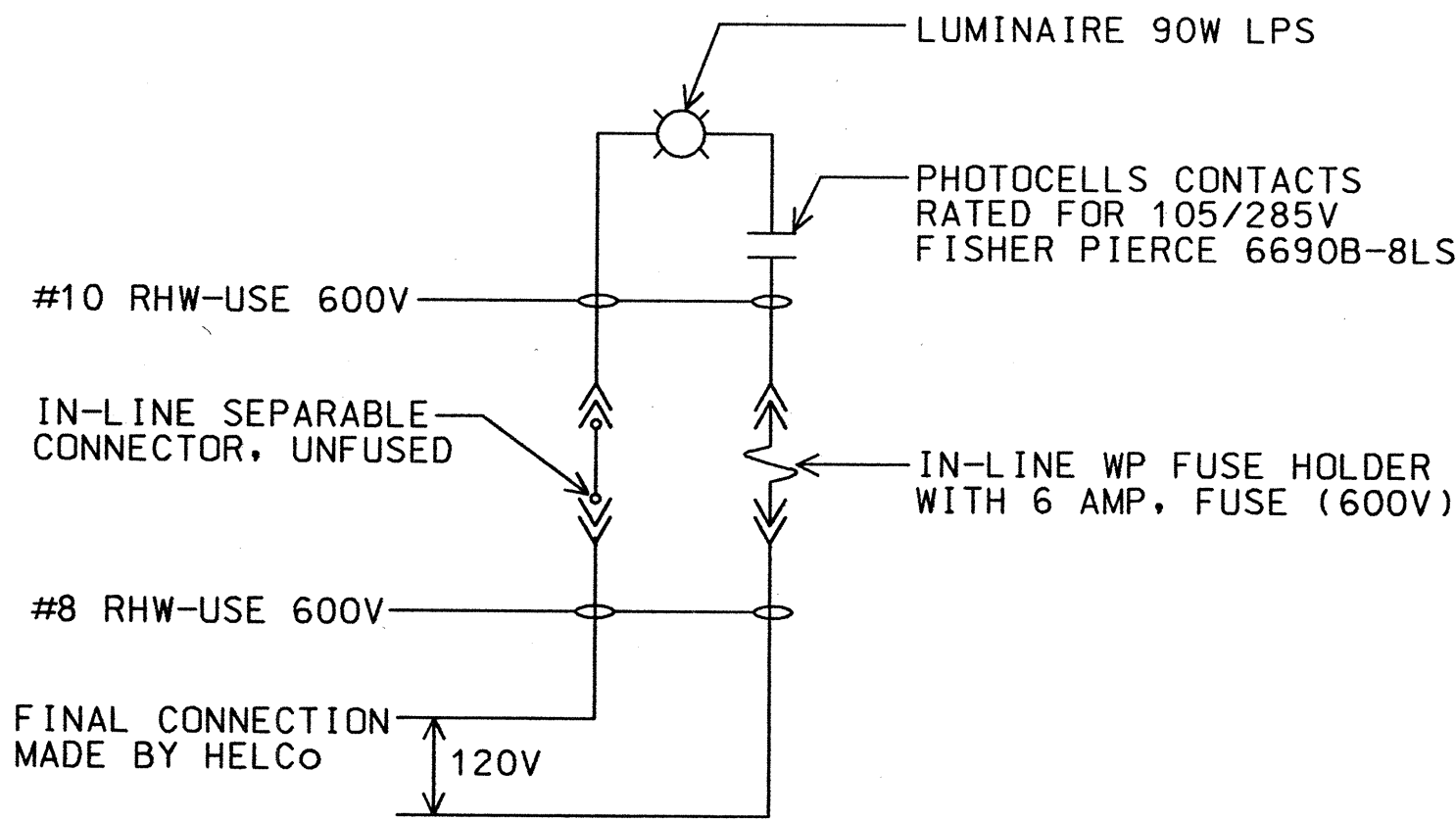


ALL STEEL SHALL BE HOT DIPPED GALVANIZED.  
STEEL INSTALLED BELOW GRADE SHALL BE  
COATED WITH 2 COATS ASPHALTIC BASED PAINT  
TO +12" ABOVE GRADE.

2 CONCRETE DEADMAN DETAIL  
E-5 NTS



3 AERIAL CABLE DEADEND  
E-5 NOT TO SCALE



NOTE:  
ALL NEUTRAL CONDUCTORS MUST HAVE WHITE INSULATION.  
ANY OTHER METHOD OF IDENTIFICATION IS UNACCEPTABLE.

STREET LIGHT ONE-LINE DIAGRAM  
NOT TO SCALE

SURVEY PLOTTED BY	DATE
DRAWN BY	
DESIGNED BY	
QUANTITIES BY	
CHECKED BY	
ORIGINAL PLAN	
NOTE BOOK	
N.	

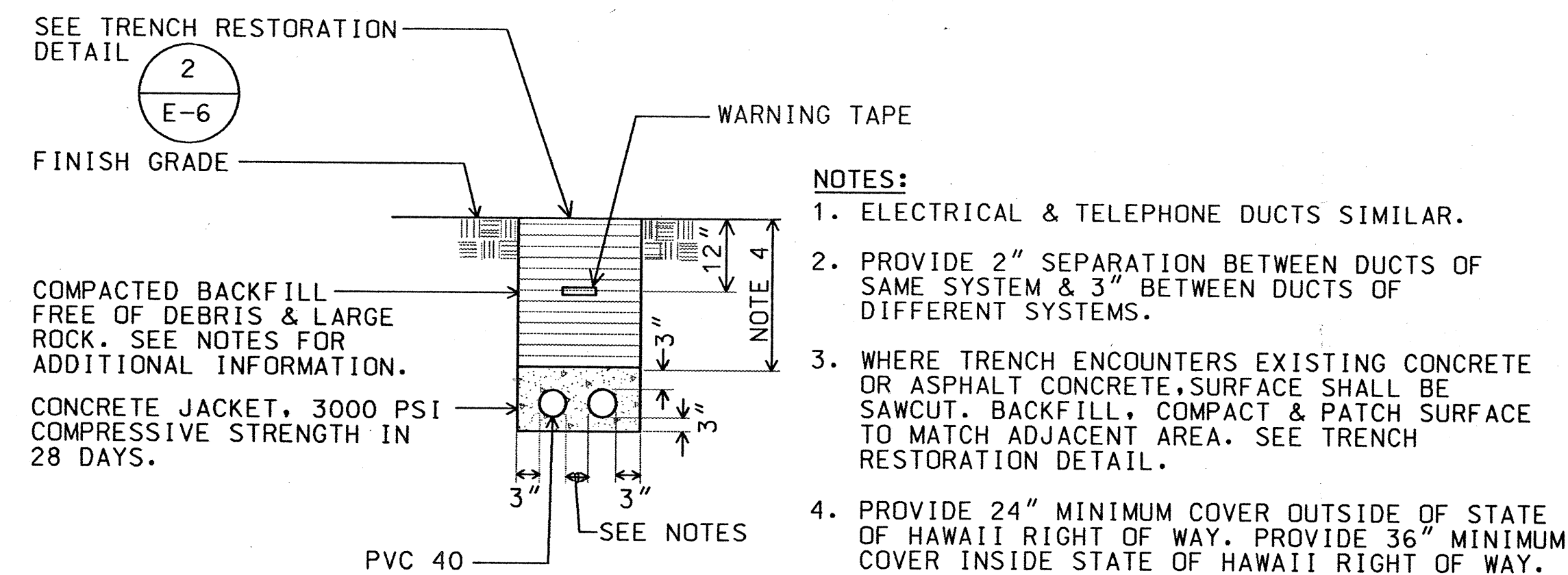
THIS WORK WAS PREPARED BY ME  
OR UNDER MY SUPERVISION.  
*R.C. KATAHARA* 3/5/01  
MK ENGINEERS, LTD.

STATE OF HAWAII  
DEPARTMENT OF TRANSPORTATION  
HIGHWAYS DIVISION

ELECTRICAL - DETAILS &  
STREET LIGHT ONE-LINE DIAGRAM

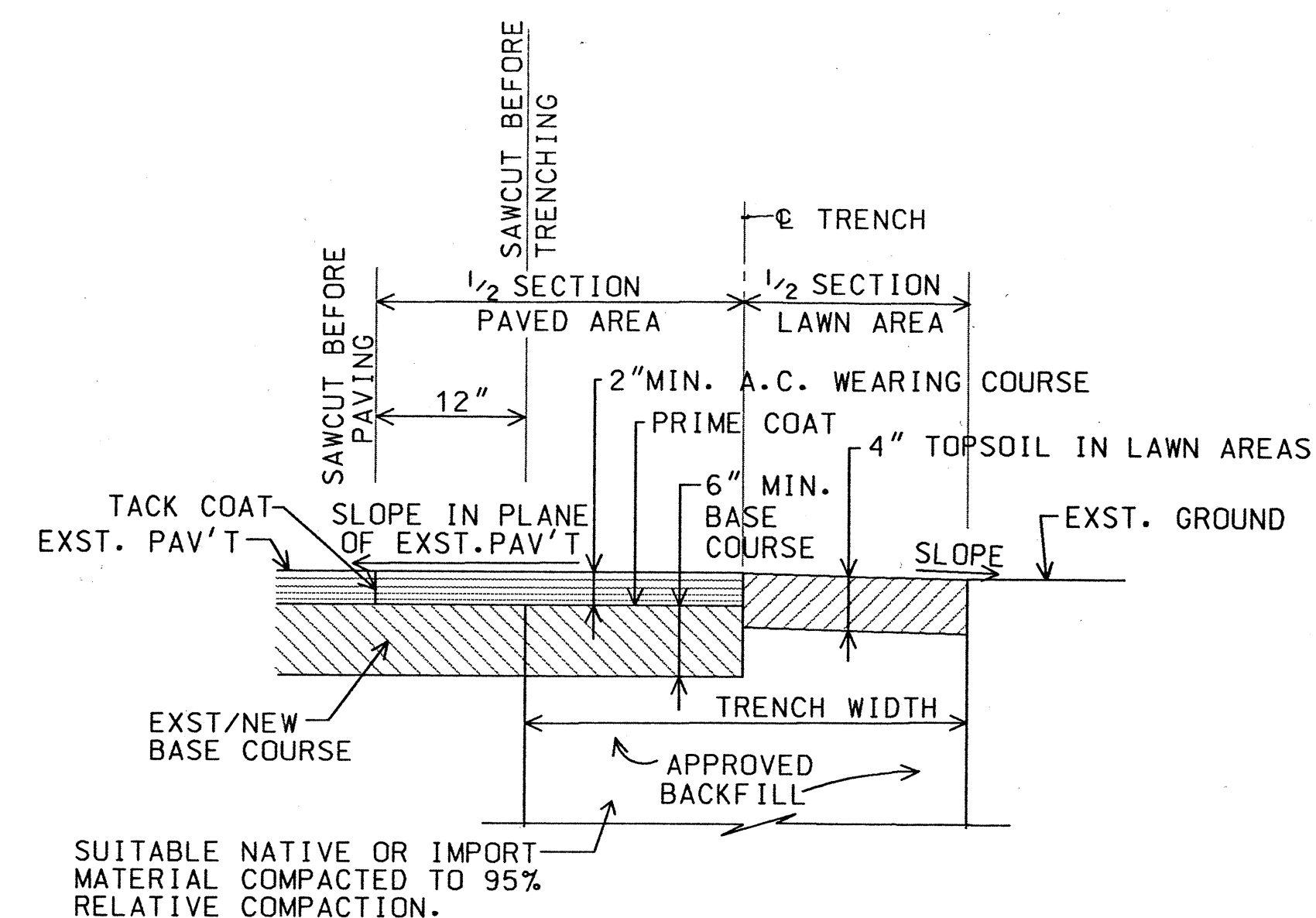
KAWAIHAE ROAD PU'UKOHOLA HEIAU NHS  
INTERSECTION IMPROVEMENTS  
FAP NOS. FLH-0270(16) & FLH-0270(17)  
Scale: AS NOTED Date: November 2000

FED. ROAD DIST. NO.	STATE	FED. AID PROJ. NO.	FISCAL YEAR	SHEET NO.	TOTAL SHEETS
HAWAII	HAW.	FLH-0270(16) & FLH-0270(17)	2000	32	41

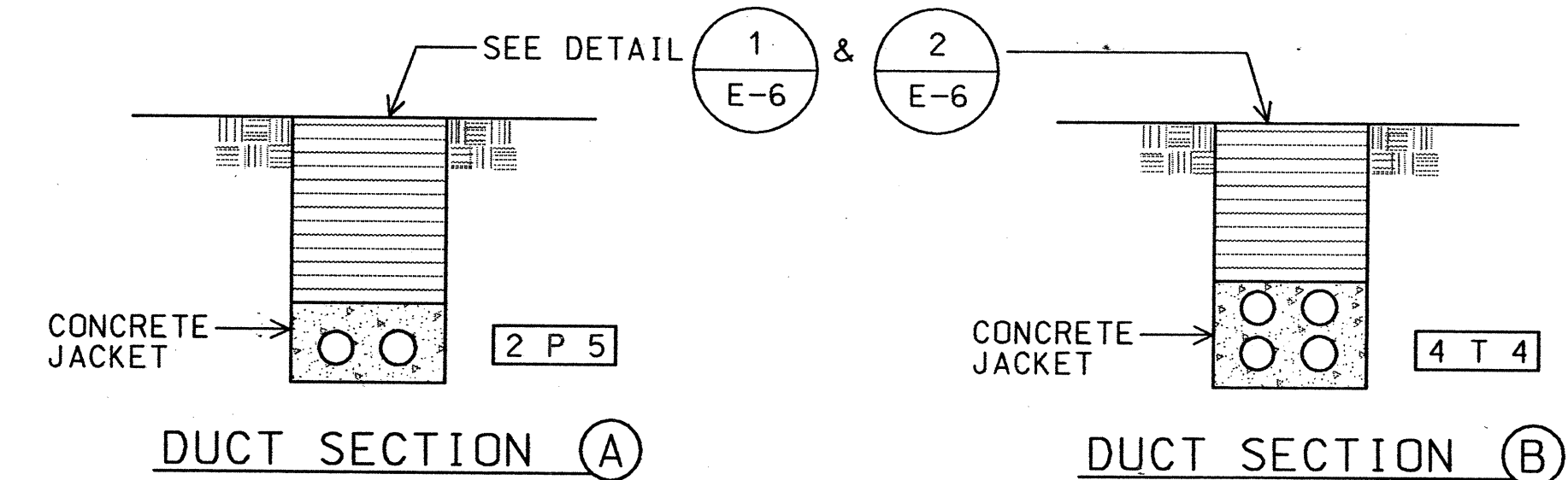


- NOTES:**
1. ELECTRICAL & TELEPHONE DUCTS SIMILAR.
  2. PROVIDE 2" SEPARATION BETWEEN DUCTS OF SAME SYSTEM & 3" BETWEEN DUCTS OF DIFFERENT SYSTEMS.
  3. WHERE TRENCH ENCOUNTERS EXISTING CONCRETE OR ASPHALT CONCRETE, SURFACE SHALL BE SAWCUT, BACKFILL, COMPACT & PATCH SURFACE TO MATCH ADJACENT AREA. SEE TRENCH RESTORATION DETAIL.
  4. PROVIDE 24" MINIMUM COVER OUTSIDE OF STATE OF HAWAII RIGHT OF WAY. PROVIDE 36" MINIMUM COVER INSIDE STATE OF HAWAII RIGHT OF WAY.

1 TYPICAL DUCT SECTION (CONCRETE ENCASED)  
E-6 NOT TO SCALE 00093-07



2 TRENCH RESTORATION DETAIL  
E-6 NOT TO SCALE 00093-08



3 DUCT SECTION DETAILS  
E-6 NOT TO SCALE 00093-09

SURVEY PLATTED BY	DATE
DRAWN BY	
TRACED BY	
NOTES BOOK	
QUANTITIES BY	
CHECKED BY	
ORIGINAL PLAN	
NOTES BOOK	
DATE	

THIS WORK WAS PREPARED BY ME OR UNDER MY SUPERVISION.  
*R.C. KATAHARA* 3/5/01  
MK ENGINEERS, LTD.

STATE OF HAWAII  
DEPARTMENT OF TRANSPORTATION  
HIGHWAYS DIVISION

ELECTRICAL – DUCT SECTIONS & DETAILS

KAWAIHAE ROAD PU'UKOHOLA HEIAU NHS  
INTERSECTION IMPROVEMENTS

FAP NOS. FLH-0270(16) & FLH-0270(17)

Scale: AS NOTED Date: November 2000

SHEET No. E-6 OF SHEETS