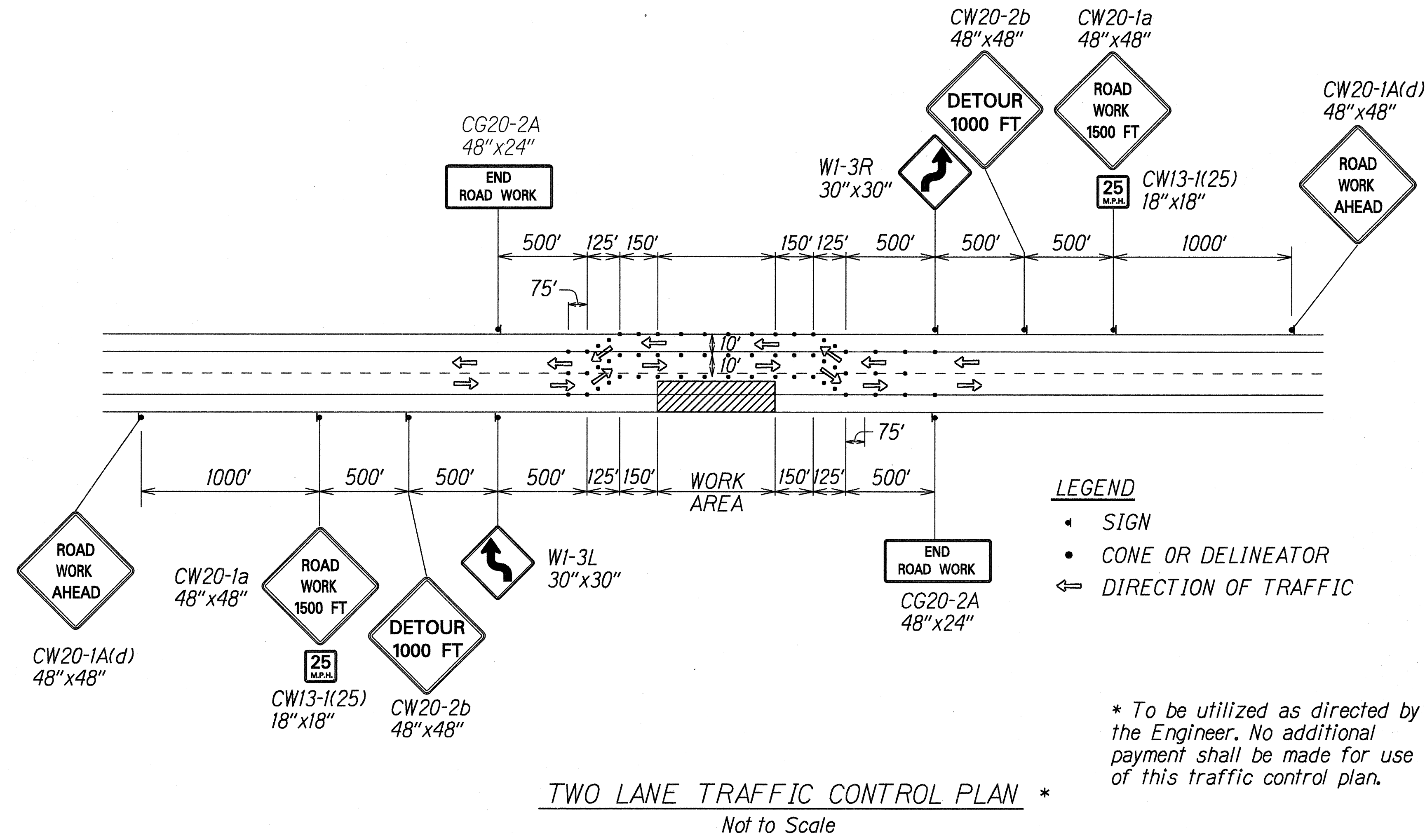


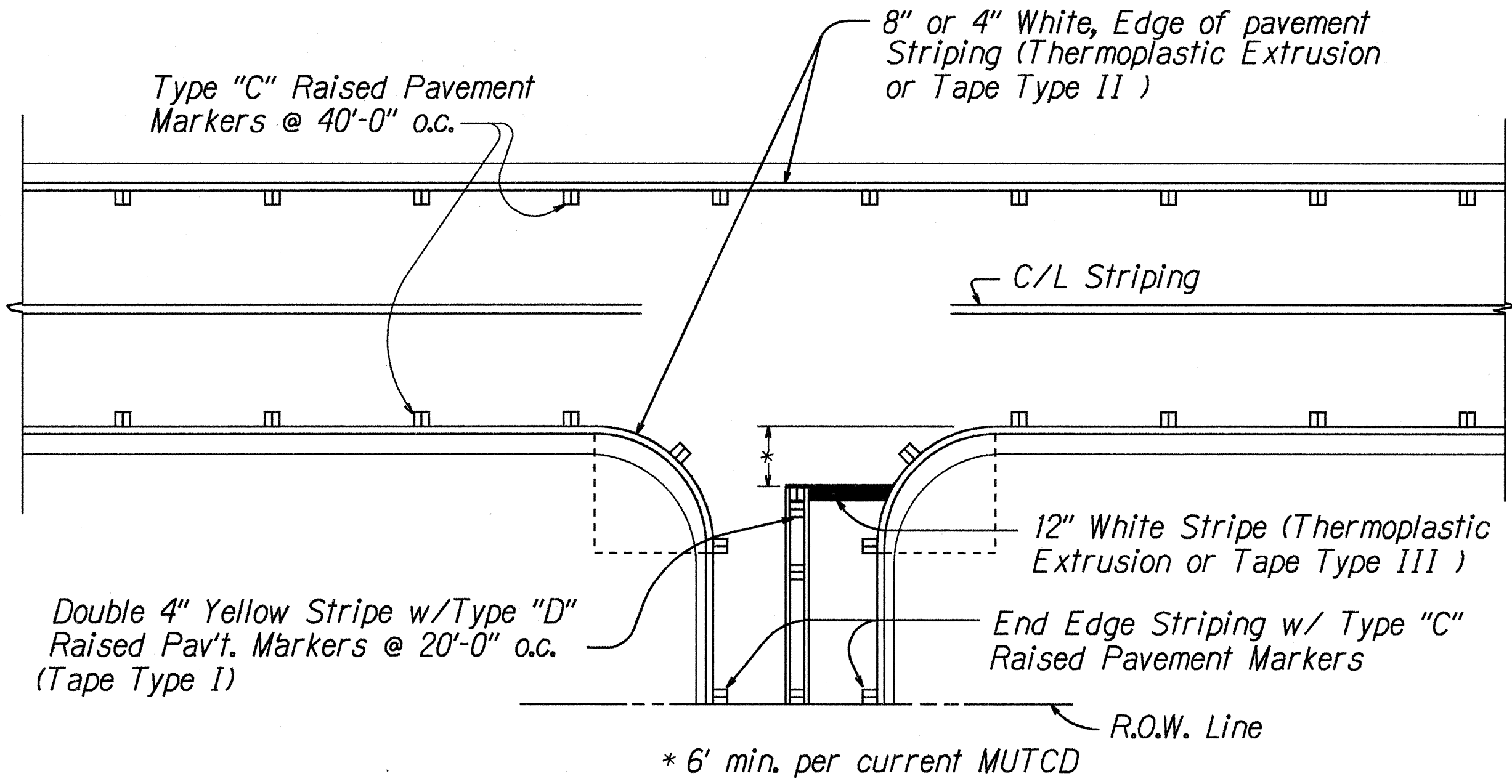
FED. ROAD DIST. NO.	STATE	FED. AID. PROJ. NO.	FISCAL YEAR	SHEET NO.	TOTAL SHEETS
HAWAII	HAW.	STP-0270(13)	1997	6	8



- NOTES**
- Layout of pavement markings and striping shall be done by the Contractor and approved by the Engineer prior to any installation work.
  - Existing pavement markings not incorporated in the final traffic pattern shall be removed as directed by the Engineer. Costs shall be incidental to the various pavement marking items.
  - Raised pavement markers shall not be installed within crosswalks.
  - Final locations of all Stop Lines shall be approved by the Engineer prior to installation.
  - All pavement striping shall be as noted on the Legend or plans, or as directed by the Engineer.
  - All preformed pavement marking tapes over existing pavement shall be applied with an approved primer as recommended by the tape manufacturer and as approved by the Engineer. The primer shall be allowed to dry to the tacky stage prior to tape application.
  - Contractor shall obtain blue raised pavement markers for locating fire hydrant from County of Hawaii Fire Department and install them at the direction of the Engineer. The cost of installing the markers shall be incidental to other Contract Items.

PAVEMENT MARKING SUMMARY	
DESCRIPTION	QUANTITY
PAVEMENT MARKERS	
Type C .....	2,600 each
THERMOPLASTIC EXTRUSION or TAPE, TYPE II	
4-Inch Pavement Stripe (White) .....	95,100 L.F.
* 8-Inch Pavement Stripe (White) .....	7,820 L.F.

\* M.P. 1.91 to 3.42 : Sta. 11+00 to 25+30 Lt. & Rt.  
Sta. 36+70 to 61+50 Lt. & Rt.



DATE	_____
SURVEY PLATTED BY	_____
DRAWN BY	_____
DESIGNED BY	_____
CHECKED BY	_____
ORIGINAL PLAN	_____
NOTE BOOK	_____
DATE	_____
BY	_____

STATE OF HAWAII  
DEPARTMENT OF TRANSPORTATION  
HIGHWAYS DIVISION

**PAVEMENT MARKING  
LEGEND AND NOTES**

AKONI PULE HIGHWAY  
SHOULDER IMPROVEMENTS  
MAHUKONA TOWARDS KAWAIIHAE  
F.A. PROJECT NO. STP-0270(13)

Scale: None Date: April, 1997

SHEET No. 1 OF 1 SHEETS