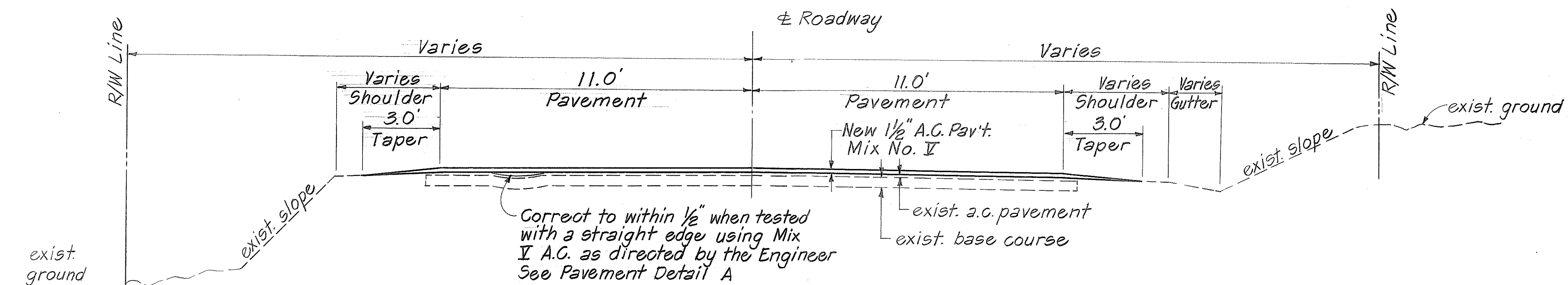
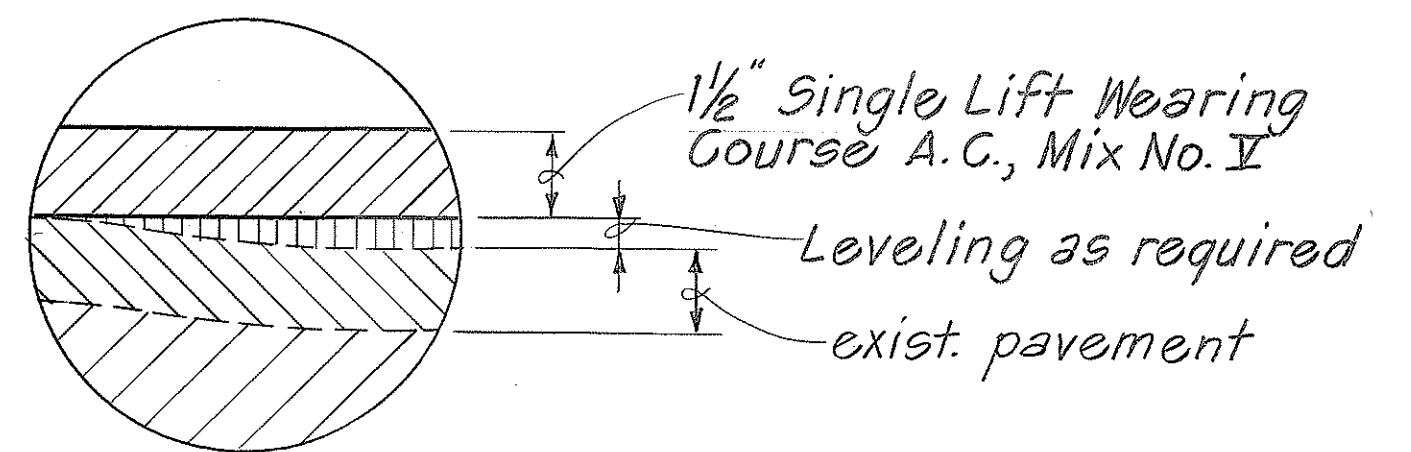


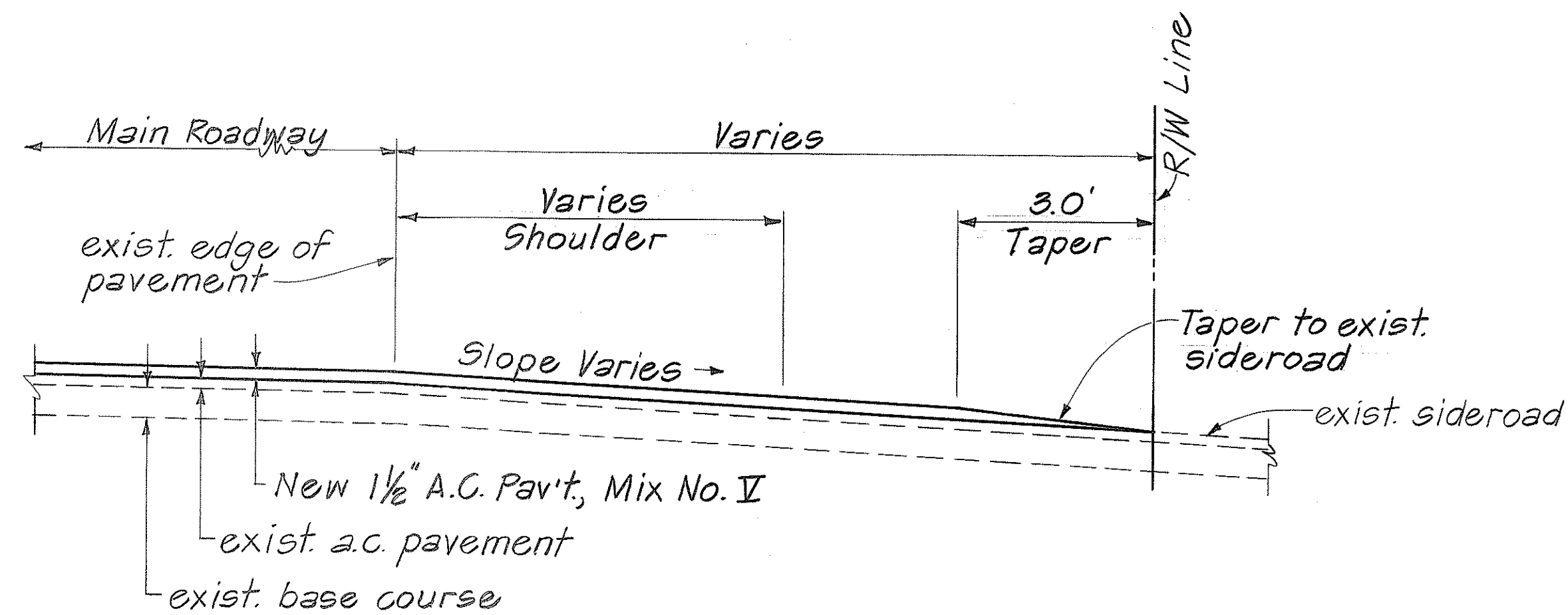
FED. ROAD DIST. NO.	STATE	PROJ. NO.	FISCAL YEAR	SHEET NO.	TOTAL SHEETS
HAWAII	HAW.	27A-01-88M	1988	3	7



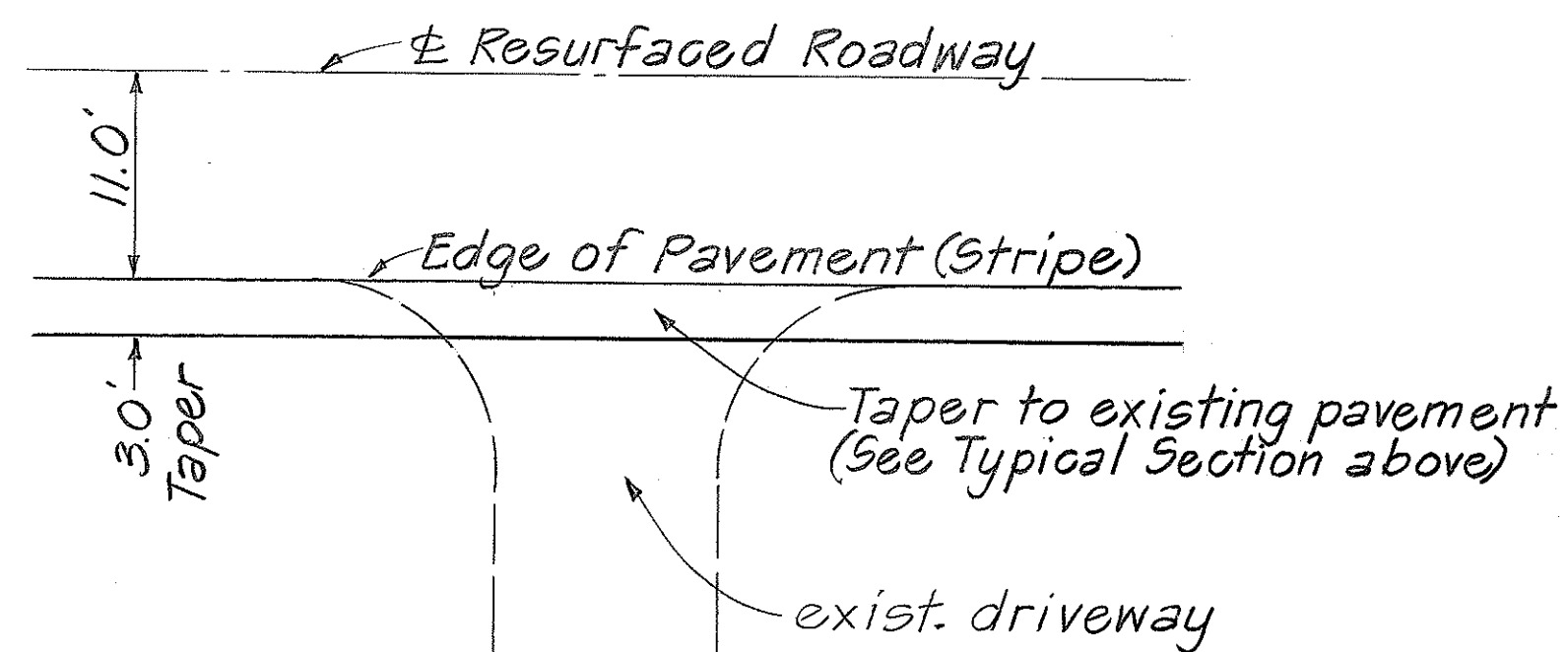
TYPICAL SECTION
Not To Scale



PAVEMENT DETAIL A
Not To Scale



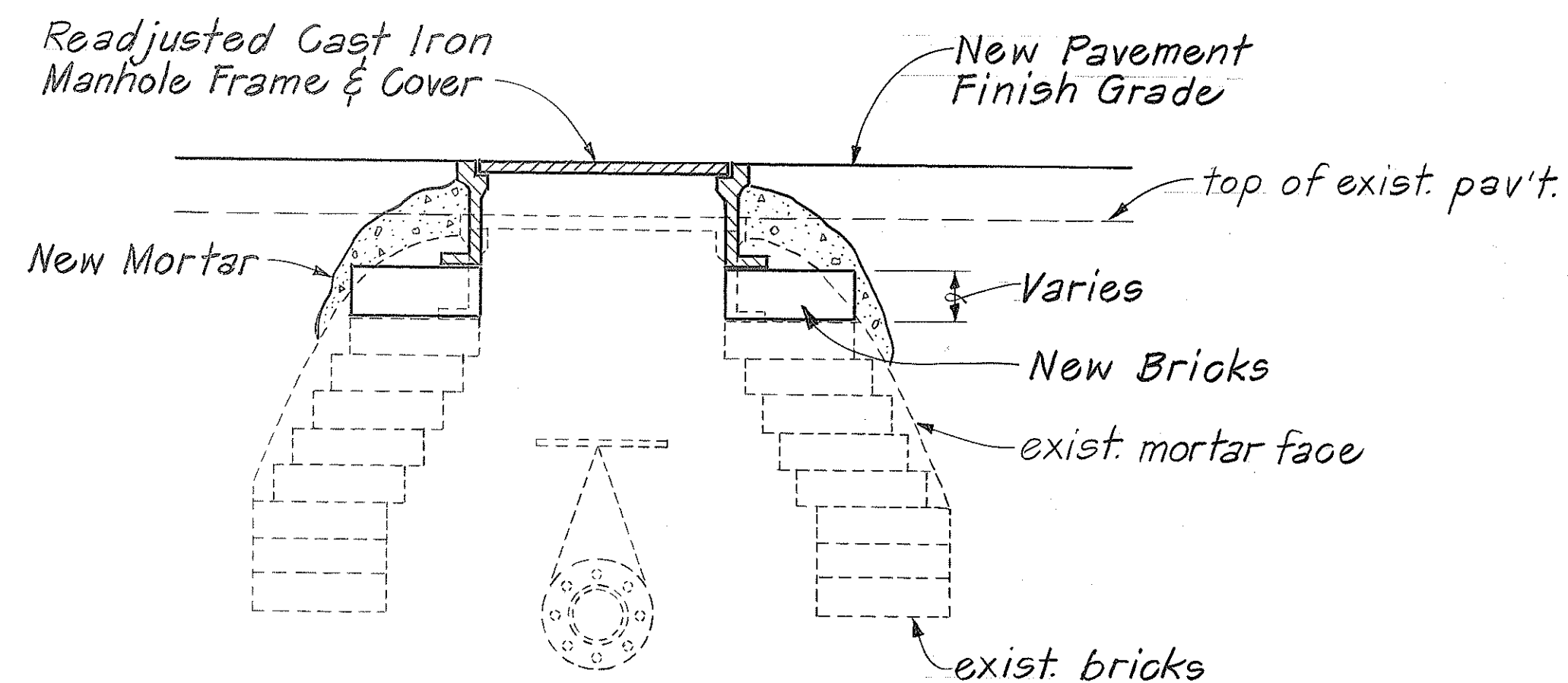
TYPICAL SECTION ~ SIDEROAD CONNECTION
Not To Scale



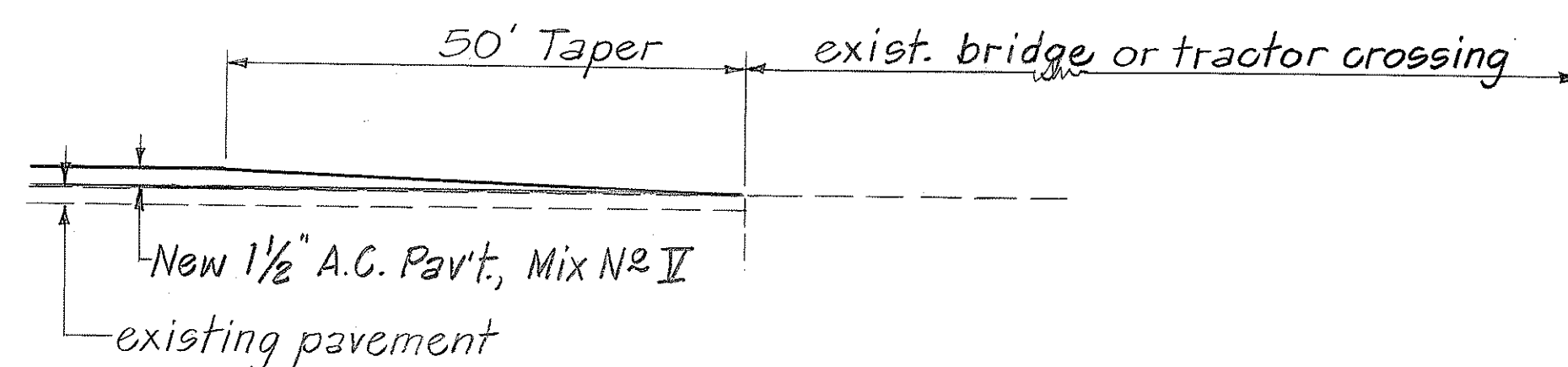
TYPICAL PLAN ~ DRIVEWAY CONNECTION
Not To Scale

GENERAL NOTES

- Improvements consist of reconstructing weakened pavement areas, resurfacing the existing pavement, installing pavement markers, adjusting water valve boxes, and adjusting centerline monuments.
- Improvements also include shoulder reconstruction and pavement for the truck Size-Weigh Station, see Sheet No. 6 for details.
- All construction signs shall be reflectorized with high intensity reflective sheeting.
- Pavement areas where striping is to be done shall be broomed off by contractor prior to striping by State Forces.
- Asphalt Concrete for leveling course shall be paid for under Item No. 401.0500 - 'Asphalt Concrete Pavement Mix No. II'.
- Tack Coat shall be incidental to Item No. 401.0500 - 'Asphalt Concrete Pavement Mix No. II'.
- Existing pavement surface variable. Surface indicated here is not intended to represent any specific location.
- Water valve boxes and manholes shall be adjusted to the finished roadway grade and shall be paid for under Item No. 604.4550 - 'Adjusting Water Valve Boxes, Frames and Covers'.
- Construct smooth and easy riding connection to existing roadway at beginning and end of project.



CAST IRON VALVE BOX FRAME AND COVER DETAIL
Not To Scale



RESURFACING DETAIL AT EXISTING BRIDGE & TRACTOR CROSSING
Not To Scale

STATE OF HAWAII DEPARTMENT OF TRANSPORTATION HIGHWAYS DIVISION	
<u>TYPICAL SECTIONS</u> <u>GENERAL NOTES</u>	
KAWAIHAE ROAD RESURFACING Queen Kaahumanu Jct to Doi Store	
PROJECT NO. 27A-01-88M	
Scale: As Shown Date: May 1987	
SHEET NO. 1 OF 1 SHEETS	