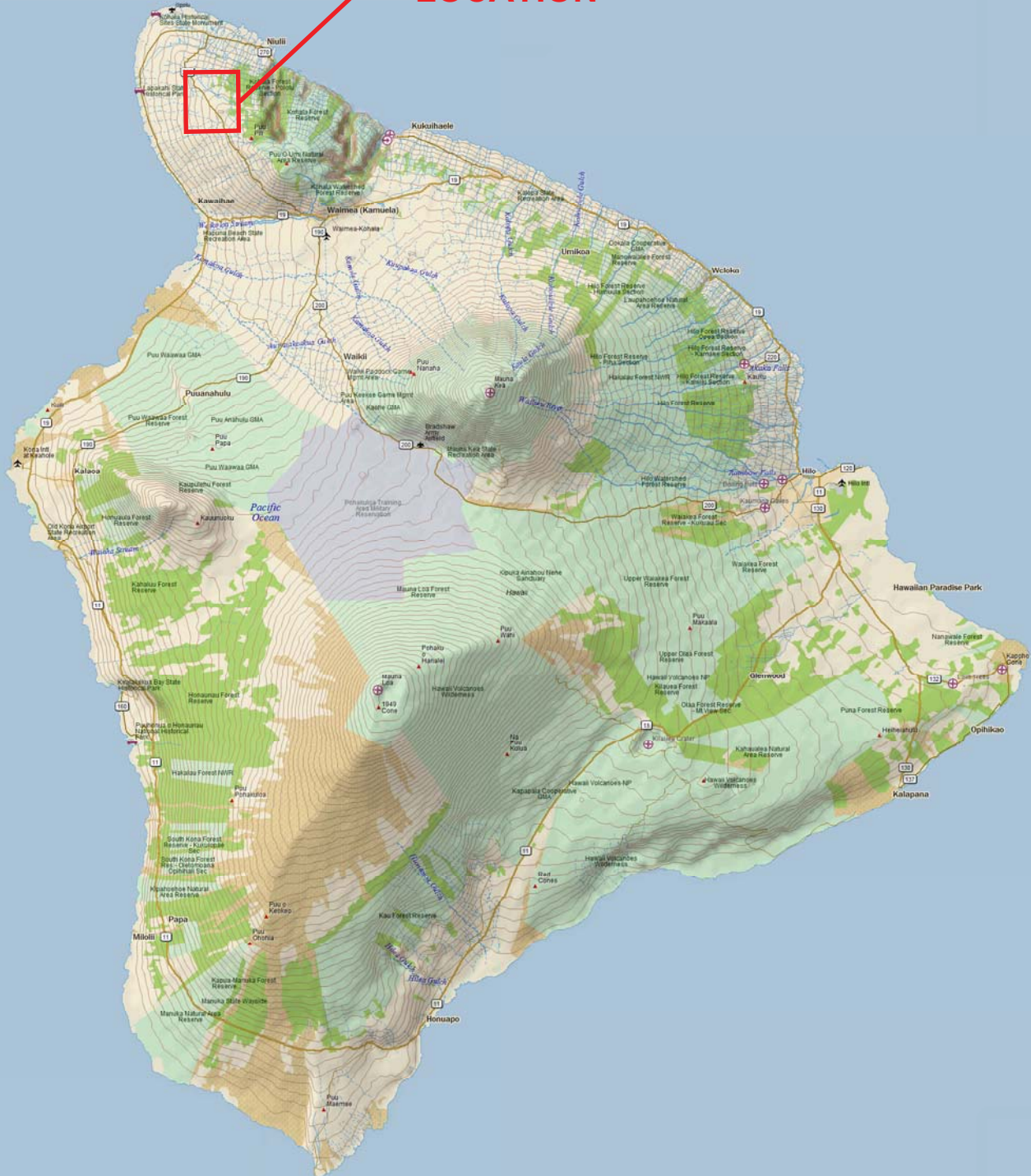


**PROJECT
LOCATION**

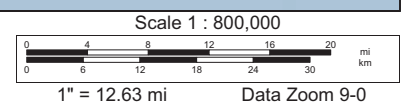
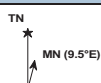


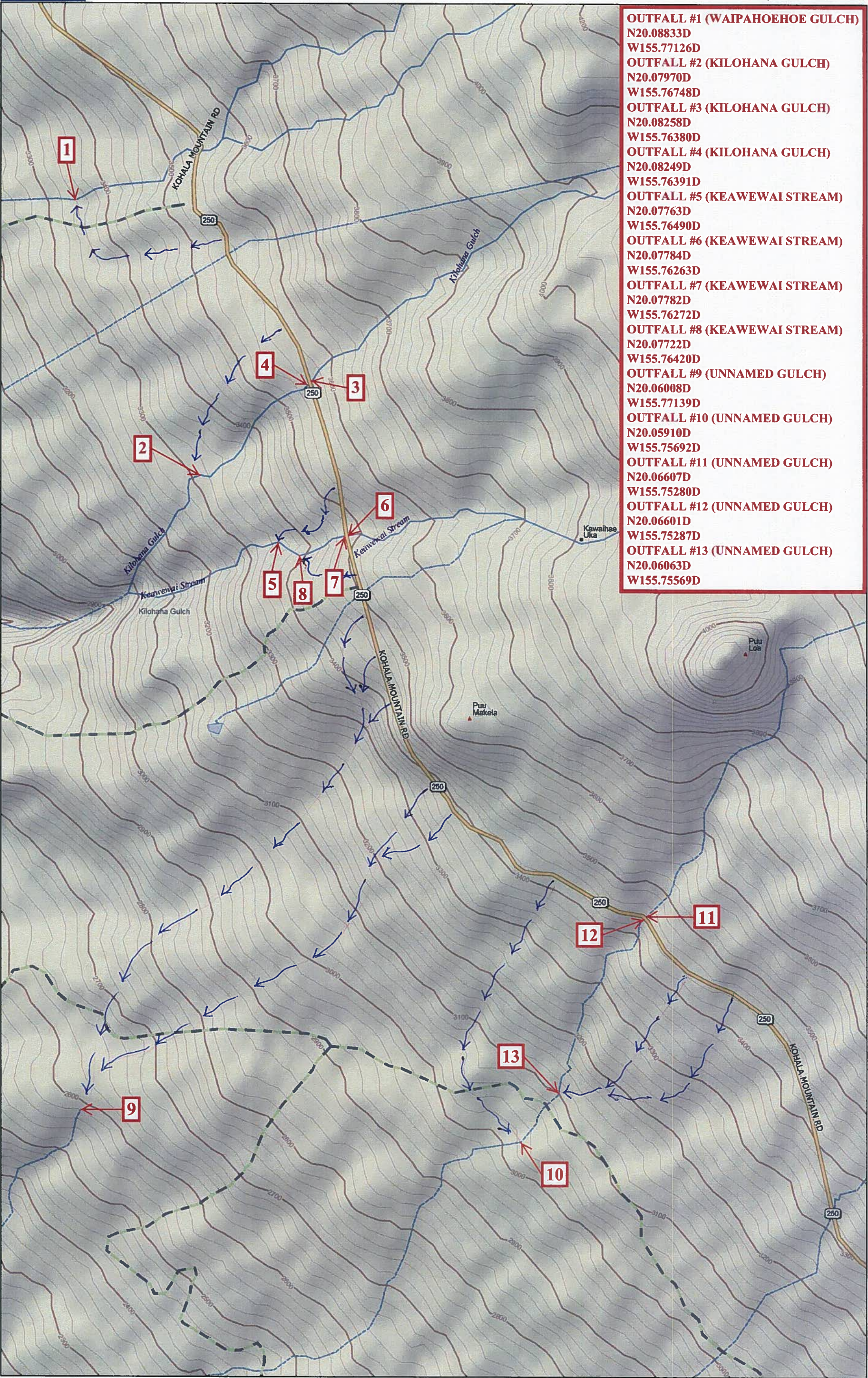
LOCATION MAP

Data use subject to license.

© DeLorme. Topo North America™ 9.

www.delorme.com



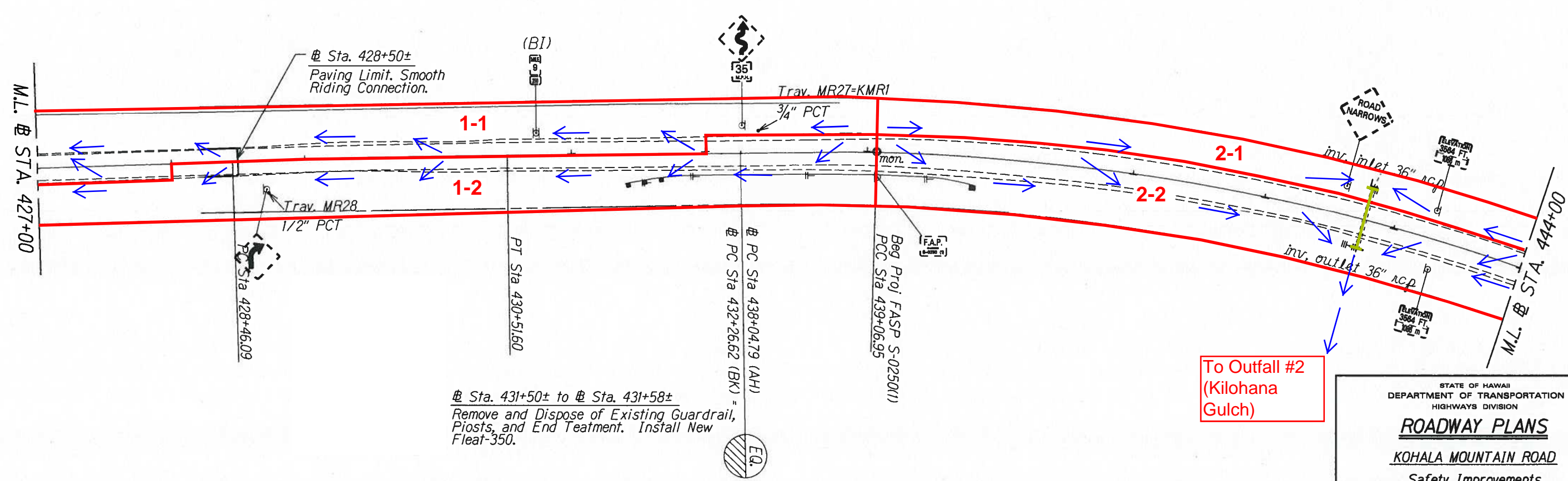
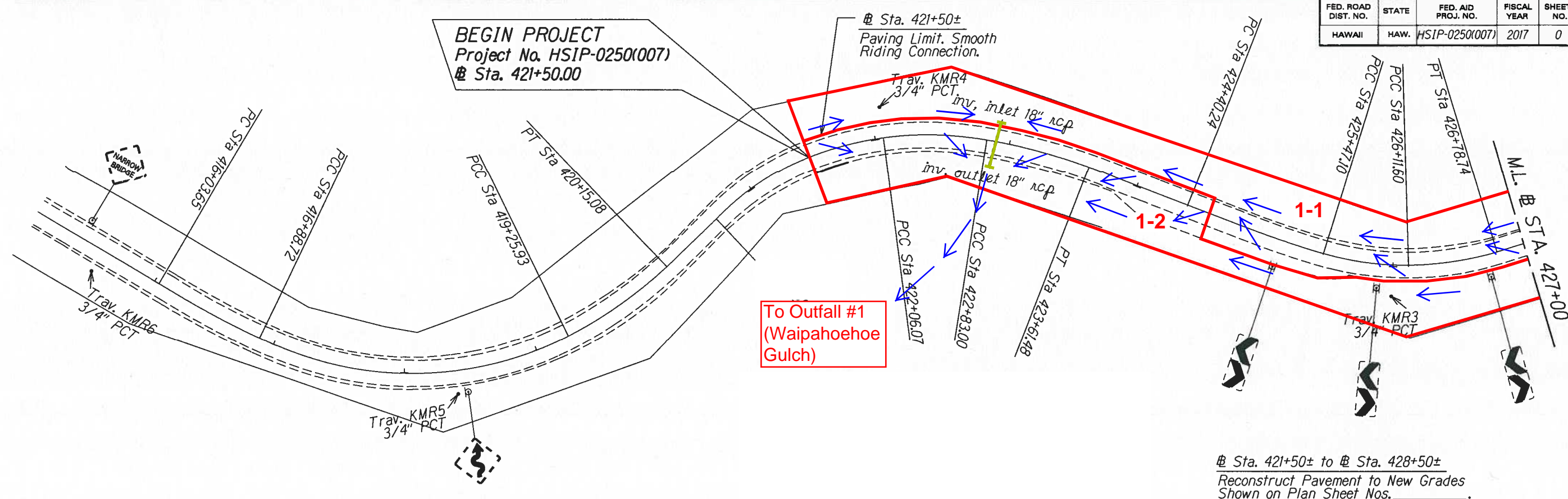


- OUTFALL #1 (WAIPAHOEHOE GULCH)
N20.08833D
W155.77126D
- OUTFALL #2 (KILOHANA GULCH)
N20.07970D
W155.76748D
- OUTFALL #3 (KILOHANA GULCH)
N20.08258D
W155.76380D
- OUTFALL #4 (KILOHANA GULCH)
N20.08249D
W155.76391D
- OUTFALL #5 (KEAWEWAI STREAM)
N20.07763D
W155.76490D
- OUTFALL #6 (KEAWEWAI STREAM)
N20.07784D
W155.76263D
- OUTFALL #7 (KEAWEWAI STREAM)
N20.07782D
W155.76272D
- OUTFALL #8 (KEAWEWAI STREAM)
N20.07722D
W155.76420D
- OUTFALL #9 (UNNAMED GULCH)
N20.06008D
W155.77139D
- OUTFALL #10 (UNNAMED GULCH)
N20.05910D
W155.75692D
- OUTFALL #11 (UNNAMED GULCH)
N20.06607D
W155.75280D
- OUTFALL #12 (UNNAMED GULCH)
N20.06601D
W155.75287D
- OUTFALL #13 (UNNAMED GULCH)
N20.06063D
W155.75569D

OUTFALL MAP



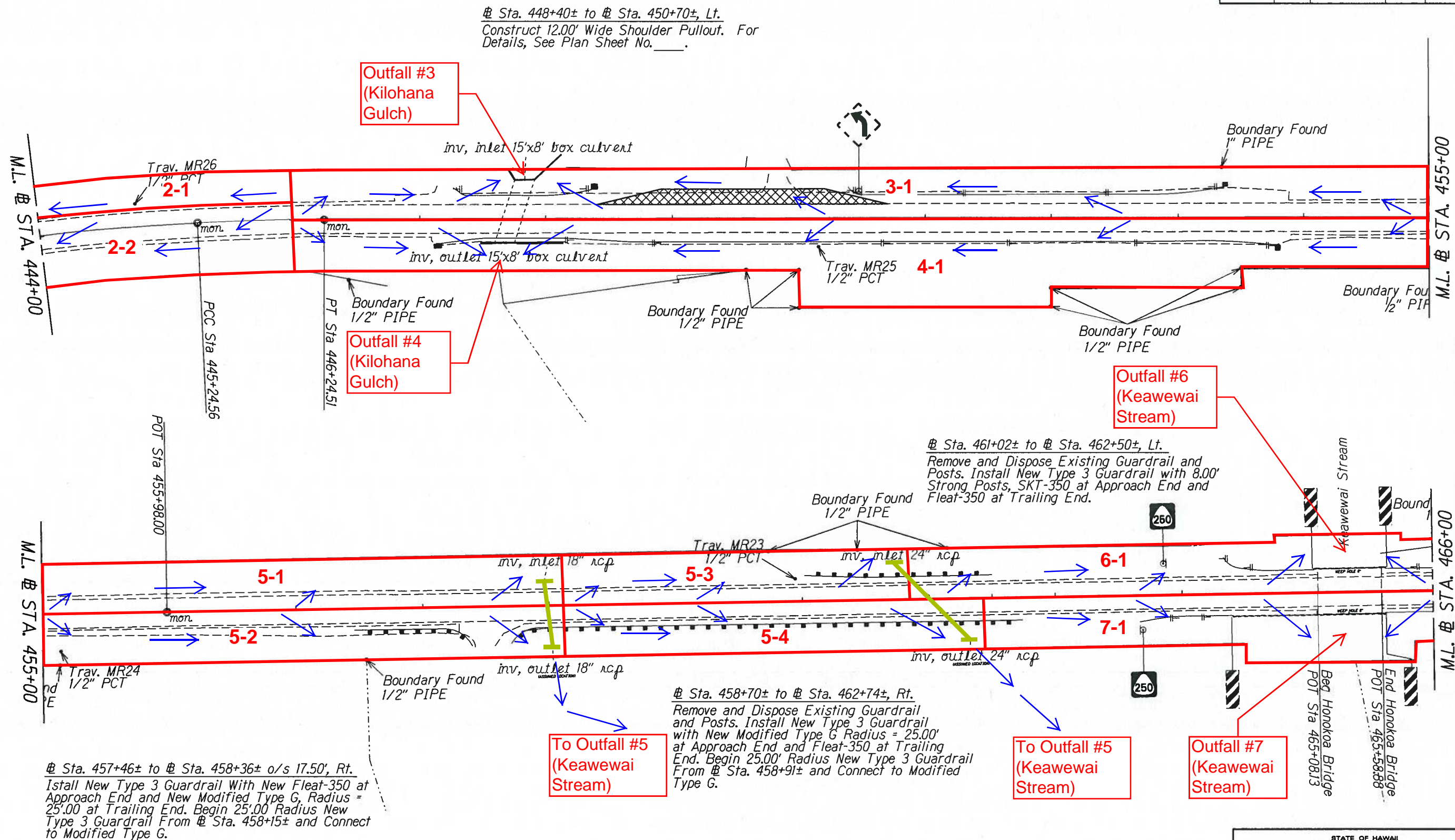
FED. ROAD DIST. NO.	STATE	FED. AID PROJ. NO.	FISCAL YEAR	SHEET NO.	TOTAL SHEETS
HAWAII	HAW.	HSIP-0250(007)	2017	0	0



DATE	BY
DESIGNED BY	NOTED BY
CHECKED BY	APPROVED BY
ORIGINAL	FILED

STATE OF HAWAII
DEPARTMENT OF TRANSPORTATION
HIGHWAYS DIVISION
ROADWAY PLANS
KOHALA MOUNTAIN ROAD
Safety Improvements
Federal Aid Project No. HSIP-0250(007)
Scale: 1" = 40' Date: March, 2017
SHEET No. 1 OF 6 SHEETS

FED. ROAD DIST. NO.	STATE	FED. AID PROJ. NO.	FISCAL YEAR	SHEET NO.	TOTAL SHEETS
HAWAII	HAW.	HSIP-0250(007)	2017	0	0

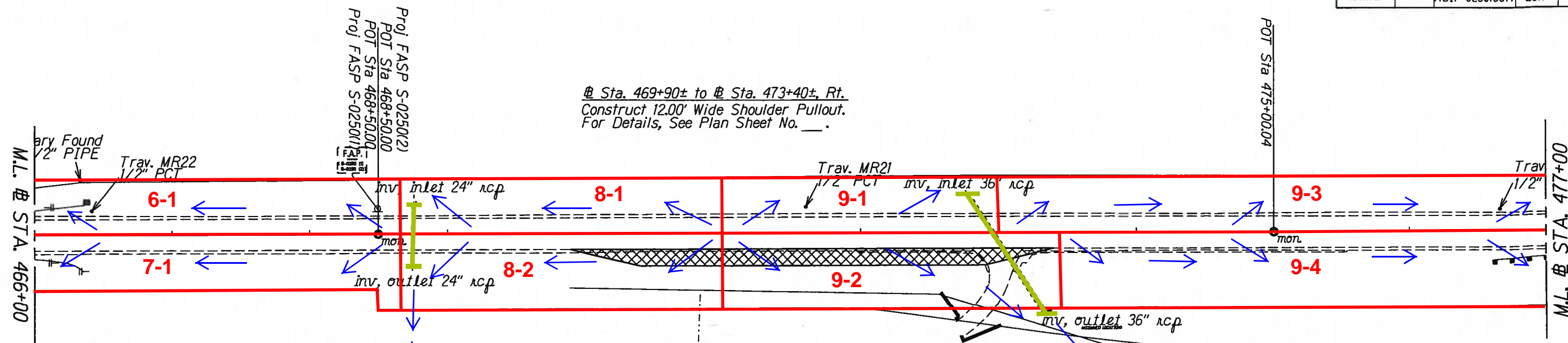


DATE	____
SURVEY PLOTTED BY	____
DESIGNED BY	____
QUANTITIES BY	____
CHECKED BY	____
ORIGINAL PLAN	____
NOTES BOOK	____
NO.	____

STATE OF HAWAII
DEPARTMENT OF TRANSPORTATION
HIGHWAYS DIVISION

ROADWAY PLANS
KOHALA MOUNTAIN ROAD
Safety Improvements
Federal Aid Project No. HSIP-0250(007)
Scale: 1" = 40'
Date: March, 2017
SHEET No. 2 OF 6 SHEETS

FED. ROAD DIST. NO.	STATE	FED. AID PROJ. NO.	FISCAL YEAR	SHEET NO.	TOTAL SHEETS
HAWAII	HAW.	HSIP-0250(007)	2017	0	0

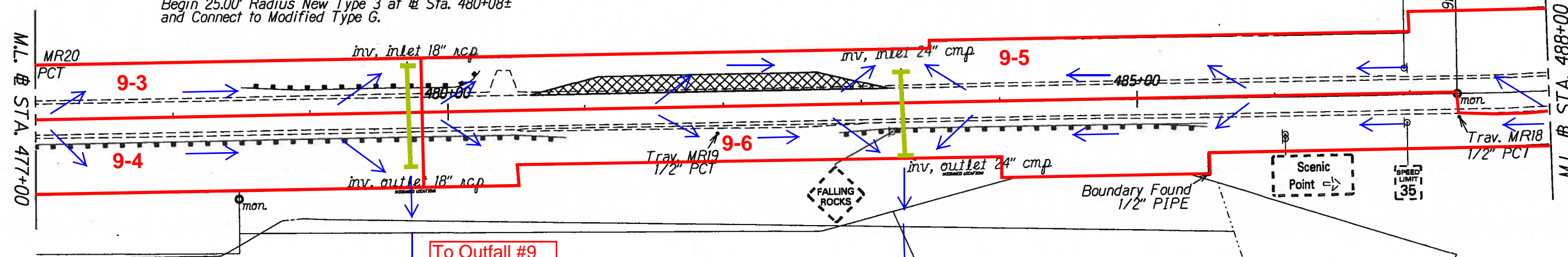


To Outfall #8
(Keawewai Stream)

To Outfall #9
(Unnamed Gulch)

@ Sta. 478+50± to @ Sta. 480+26±, Lt.
Remove and Dispose Existing Guardrail and Posts.
Install New Type 3 Guardrail with 8.00' Strong Posts, New Modified Type G Radius = 25.00' at Approach end, and New Fleet-350 at Trailing End. Begin 25.00' Radius New Type 3 at @ Sta. 480+08± and Connect to Modified Type G.

@ Sta. 480+60± to @ Sta. 483+20±, Lt.
Construct 12.00' Wide Shoulder Pullout.
For Details, See Plan Sheet No. ____.



To Outfall #9
(Unnamed Gulch)

To Outfall #9
(Unnamed Gulch)

@ Sta. 476+62± to @ Sta. 480+86±, Rt.
Remove and Dispose Existing Guardrail and Posts.
Install New Type 3 Guardrail with 8.00' Strong Posts, and New Fleet-350 at Both Approach and Trailing Ends.

@ Sta. 482+84± to @ Sta. 485+50±, Rt.
Remove and Dispose Existing Guardrail and Posts.
Install New Type 3 Guardrail and New Fleet-350 at Both Approach and Trailing Ends.

SURVEY PLOTTED BY	DATE
DRAWN BY	
TRACED BY	
QUANTIFIED BY	
CHECKED BY	
ORIGINAL PLAN	
NOTE BOOK	
No.	

STATE OF HAWAII
DEPARTMENT OF TRANSPORTATION
HIGHWAYS DIVISION

ROADWAY PLANS

HOHALA MOUNTAIN ROAD

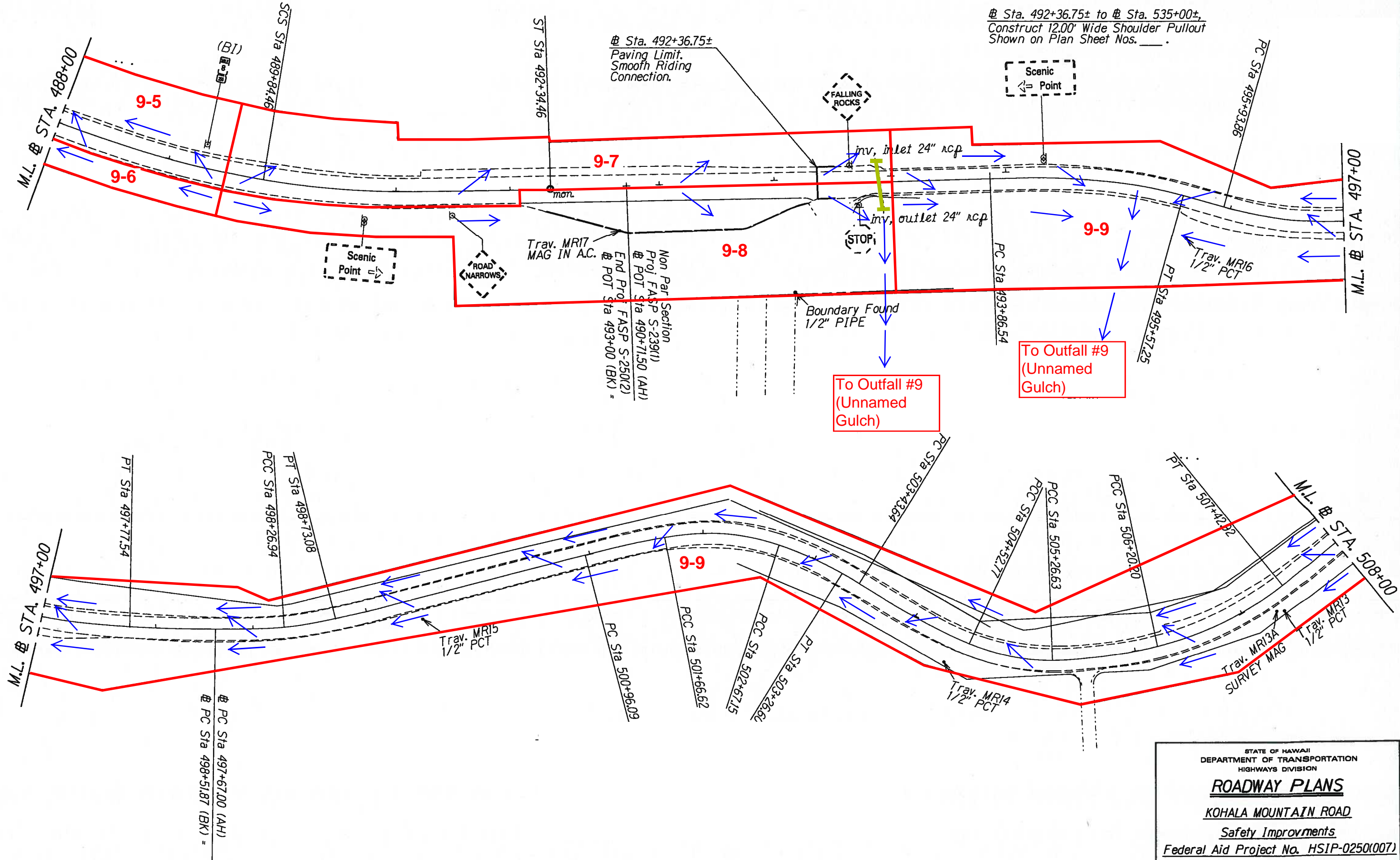
Safety Improvements

Federal Aid Project No. HSIP-0250(007)

Scale: 1" = 40' Date: January, 2013

SHEET No. 3 OF 6 SHEETS

FED. ROAD DIST. NO.	STATE	FED. AID PROJ. NO.	FISCAL YEAR	SHEET NO.	TOTAL SHEETS
HAWAII	HAW.	HSIP-0250(007)	2017	0	0



DATE	BY	CHECKED	BY
DESIGNED BY	AS	DESIGNED BY	AS
DRAWN BY	AS	DRAWN BY	AS
ORIGINAL PLAN	NO	ORIGINAL PLAN	NO

STATE OF HAWAII
DEPARTMENT OF TRANSPORTATION
HIGHWAYS DIVISION

ROADWAY PLANS

KOHALA MOUNTAIN ROAD

Safety Improvements

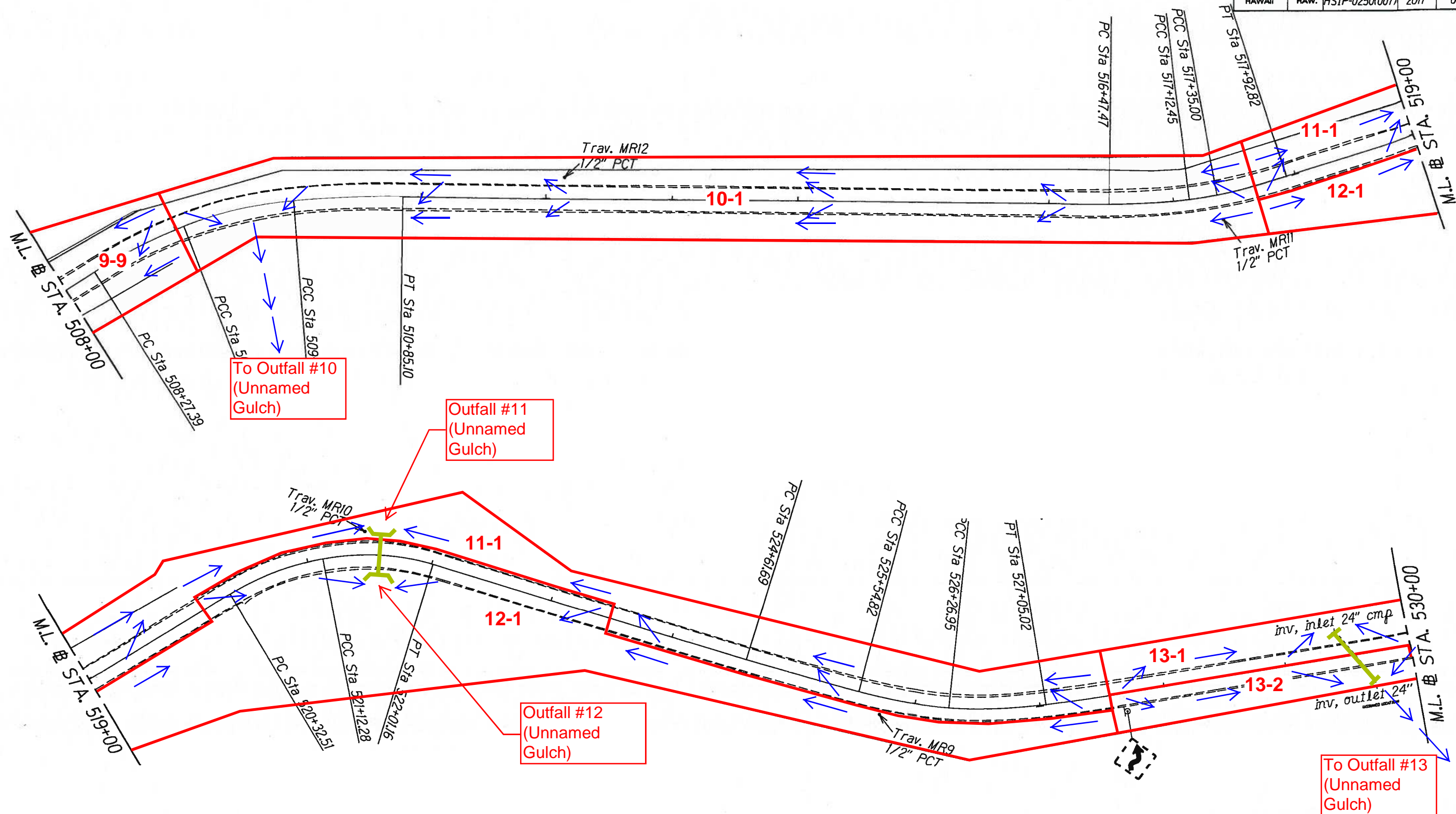
Federal Aid Project No. HSIP-0250(007)

Scale: 1" = 40'

Date: January, 2013

SHEET No. 4 OF 6 SHEETS

FED. ROAD DIST. NO.	STATE	FED. AID PROJ. NO.	FISCAL YEAR	SHEET NO.	TOTAL SHEETS
HAWAII	HAW.	HSIP-0250(007)	2017	0	0



DATE	_____
SURVEY PLOTTED BY	_____
DRAWN BY	_____
DESIGNED BY	_____
CHECKED BY	_____
ORIGINAL PLAN	_____
NOTE BOOK	_____
N.	_____

STATE OF HAWAII
DEPARTMENT OF TRANSPORTATION
HIGHWAYS DIVISION

ROADWAY PLANS

KOHALA MOUNTAIN ROAD

Safety Improvements

Federal Aid Project No. HSIP-0250(007)

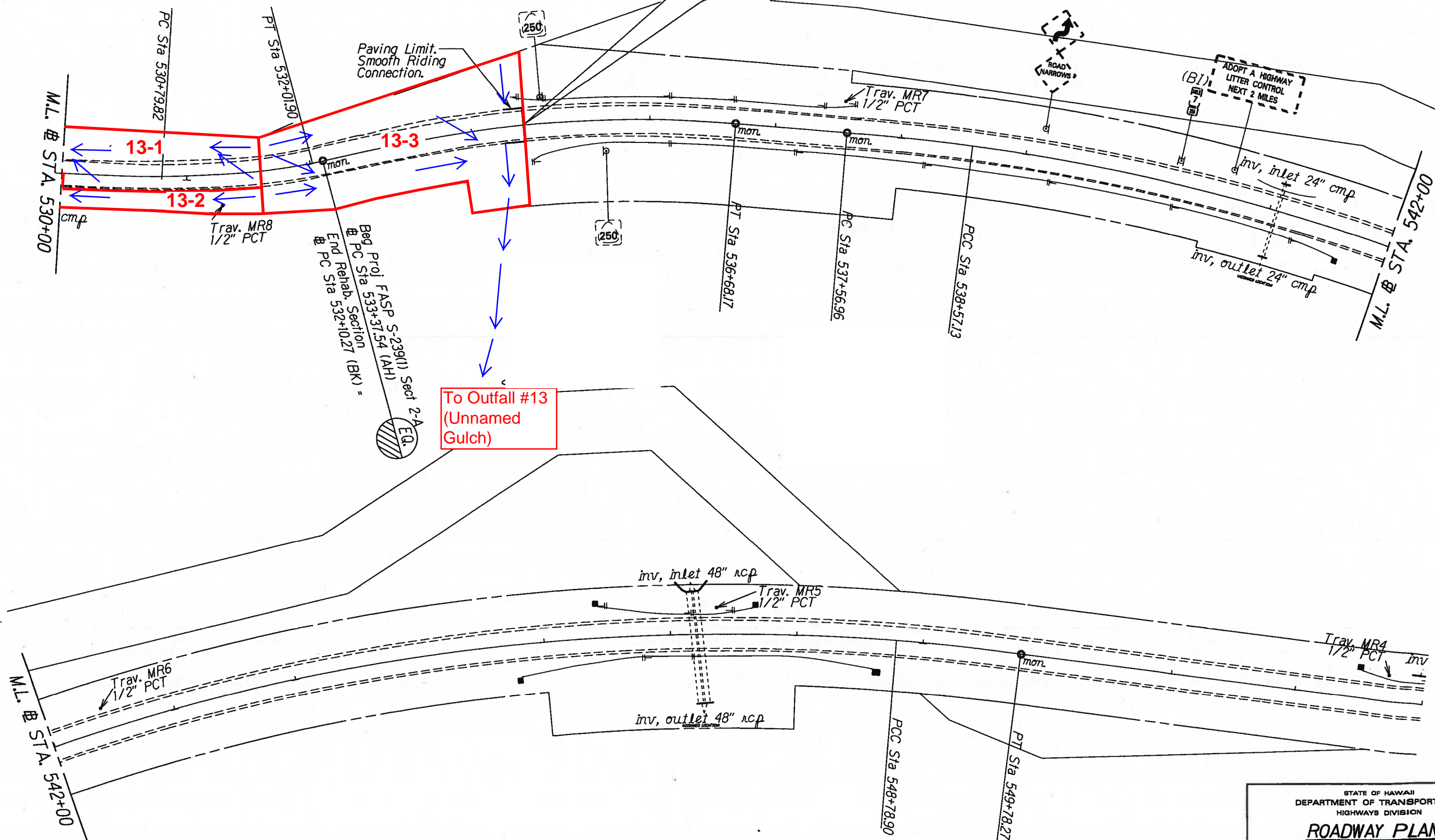
Scale: 1" = 40'

Date: January, 2013

SHEET No. 5 OF 6 SHEETS

FED. ROAD DIST. NO.	STATE	FED. AID PROJ. NO.	FISCAL YEAR	SHEET NO.	TOTAL SHEETS
HAWAII	HAW.	HSIP-0250(007)	2017	0	0

END OF PROJECT
Project No. HSIP-0250(007)
@ Sta. 535+00



DATE	_____
SURVEY PLOTTED BY	_____
DESIGNED BY	_____
TRACED BY	_____
QUANTITIES BY	_____
CHECKED BY	_____
ORIGINAL PLAN	_____
NOTE BOOK	_____
No.	_____

STATE OF HAWAII
DEPARTMENT OF TRANSPORTATION
HIGHWAYS DIVISION

ROADWAY PLANS

KOHALA MOUNTAIN ROAD

Safety Improvements

Federal Aid Project No. HSIP-0250(007)

Scale: 1" = 40' Date: January, 2013

SHEET No. 6 OF 6 SHEETS