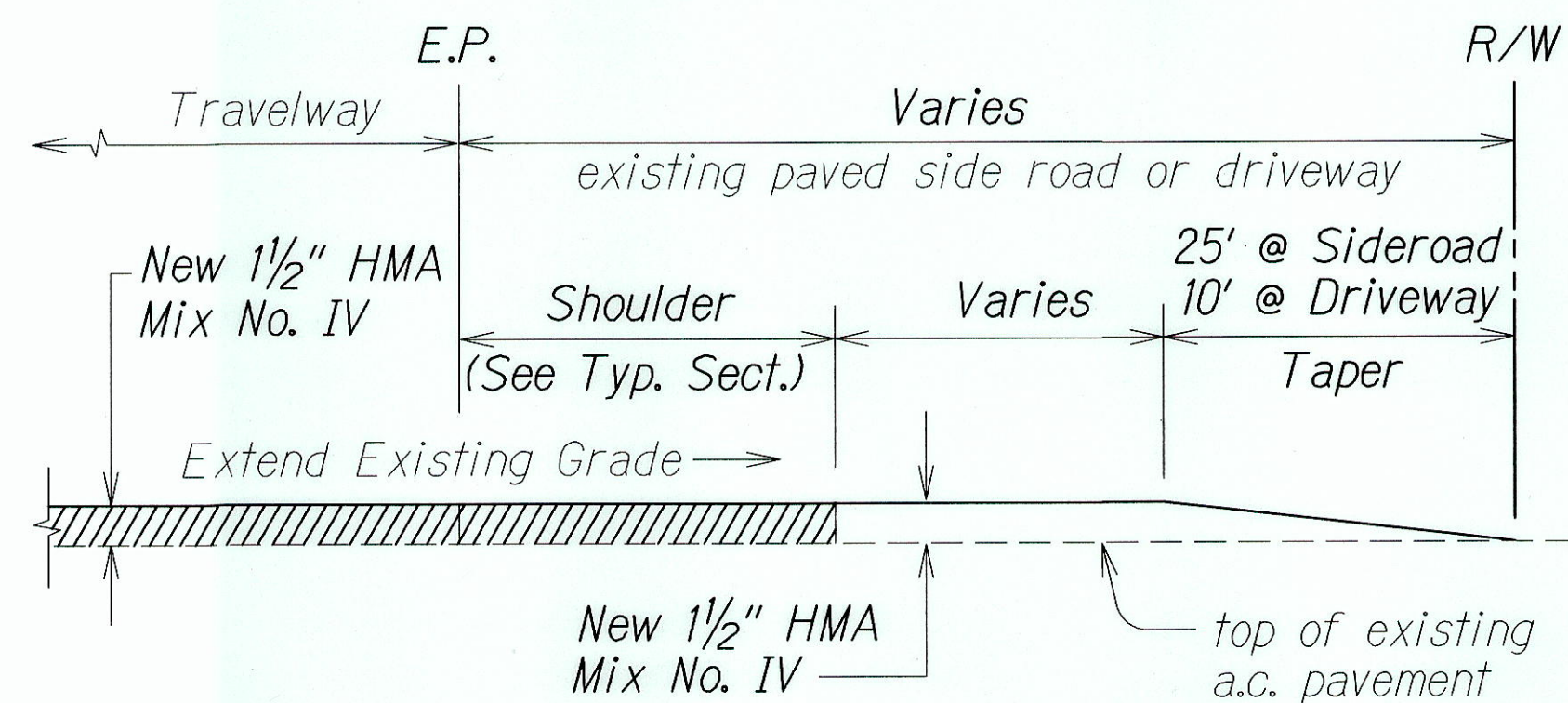
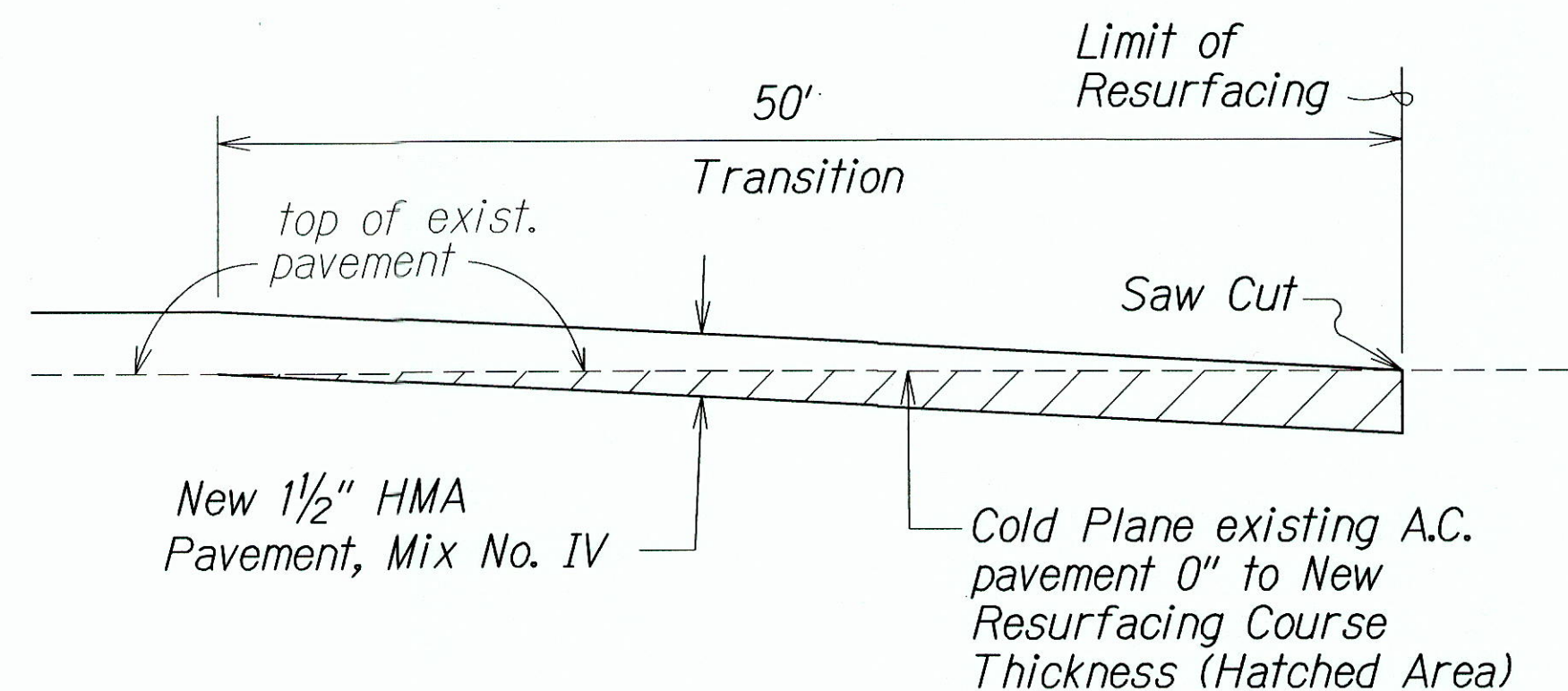


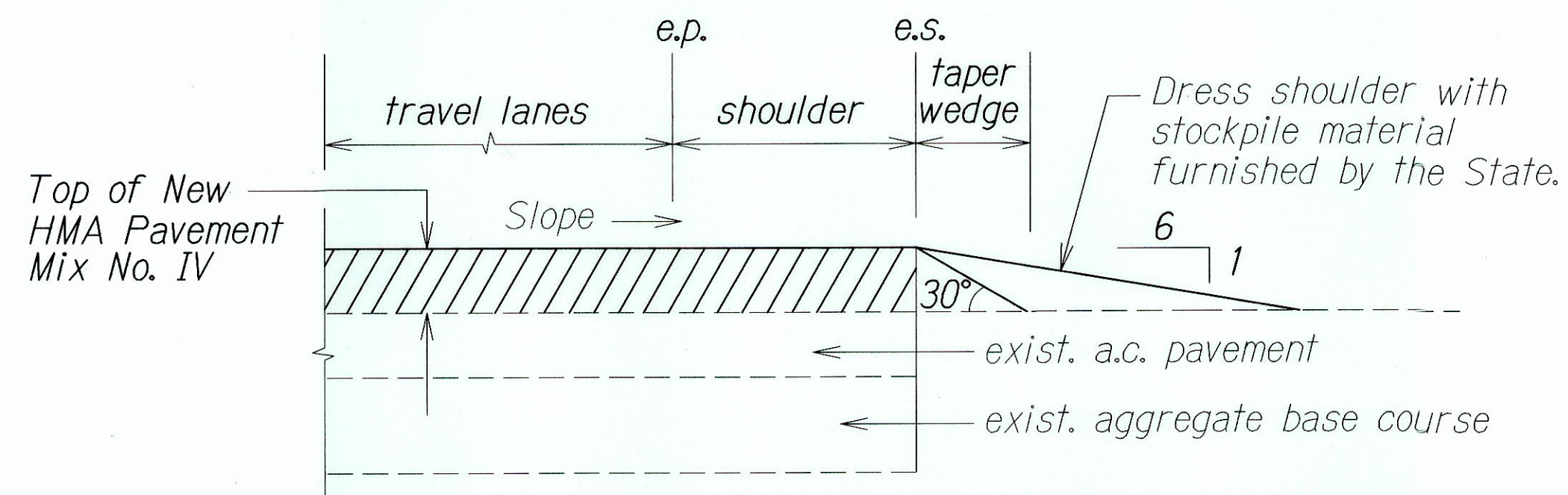
FED. ROAD DIST. NO.	STATE	FED.AID PROJ. NO.	FISCAL YEAR	SHEET NO.	TOTAL SHEETS
HAWAII	HAW.	STP-250(006)	2011	7	20



**A. C. RESURFACING AT PAVED SIDEROAD
OR PAVED DRIVEWAY DETAIL**
Not To Scale



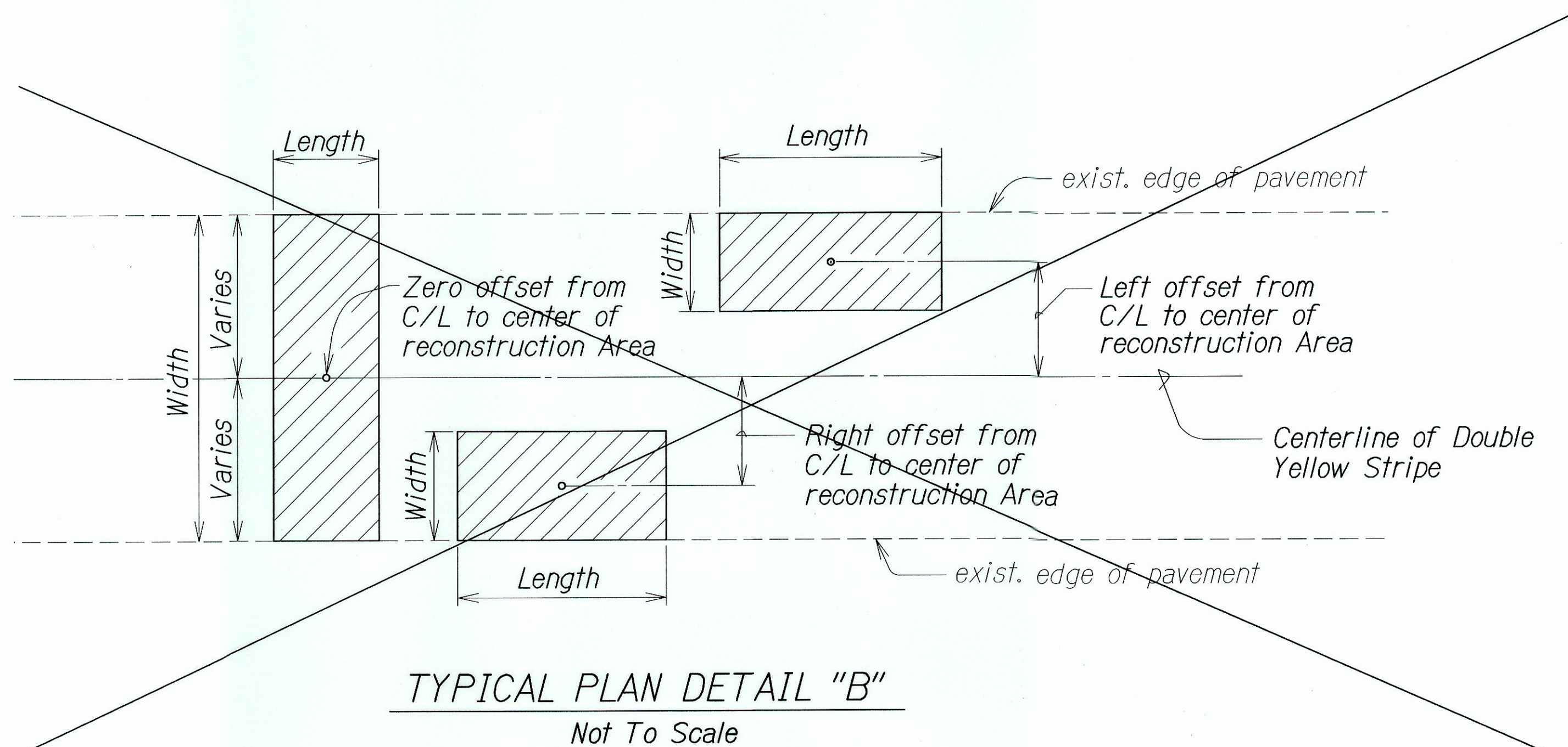
**COLD PLANED TRANSITION
AT BEGINNING AND END OF PROJECT**
Not To Scale



Note: Contractor shall mount a device directly on the paver screed extension to provide a 30° beveled shoulder edge.

Note:
The safety edge is not required behind guardrails (Edge Taper).

TYPICAL PAVEMENT EDGE DETAIL
Not To Scale



TYPICAL PLAN DETAIL "B"
Not To Scale

LEGEND FOR AS-BUILT POSTINGS	
	Squiggly line for as-built deletion
	Double line for as-built deletion
Roadway	Text for as-built posting

STATE OF HAWAII DEPARTMENT OF TRANSPORTATION HIGHWAYS DIVISION	
TYPICAL PAVEMENT DETAILS	
KOHALA MOUNTAIN ROAD PAVEMENT PREVENTIVE MAINTENANCE WAIKA JUNCTION TOWARD HAWI Federal Aid Project No. STP-250(006)	
Not To Scale	Date: April, 2011
SHEET No. 1 OF 1 SHEETS	