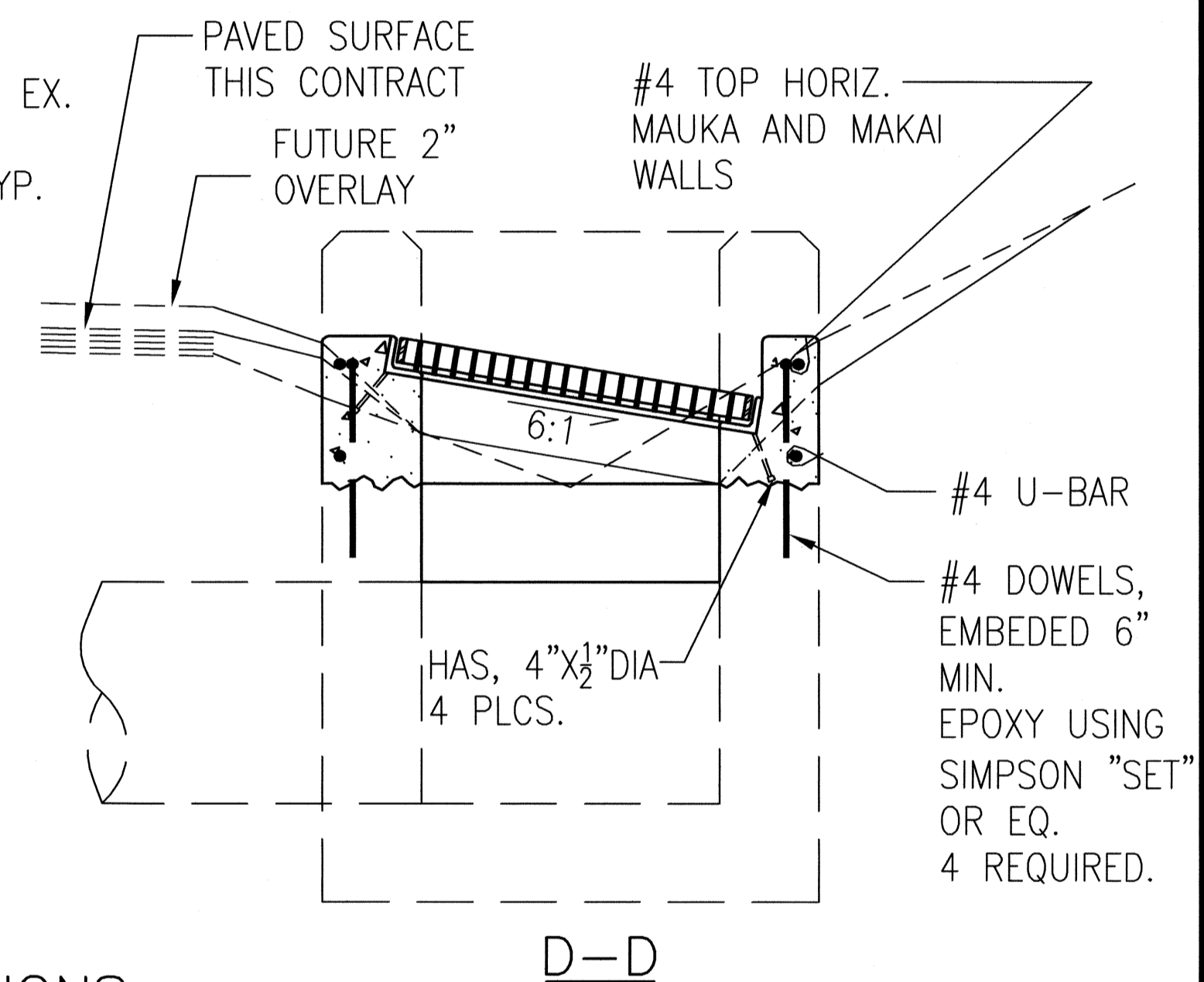
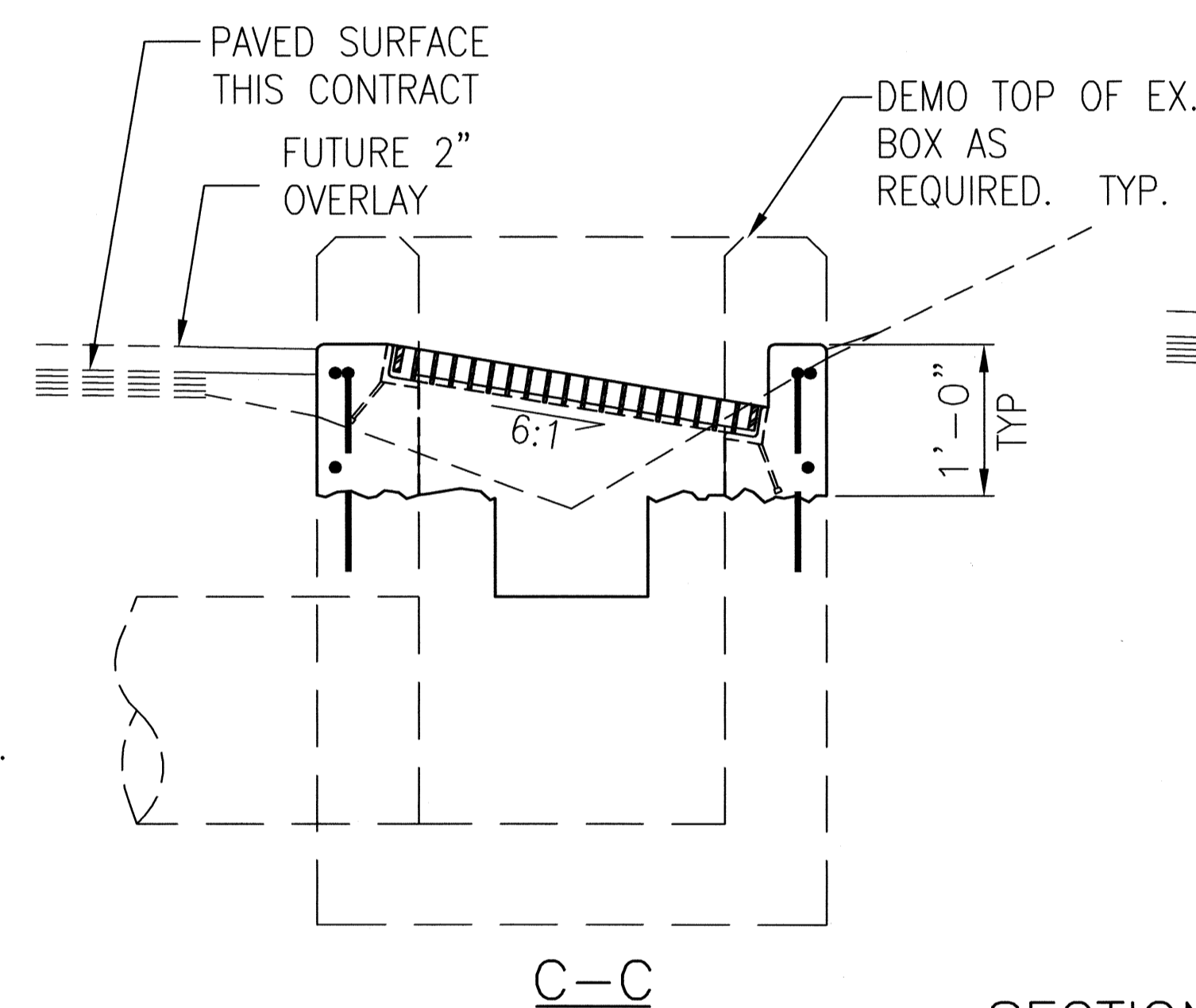
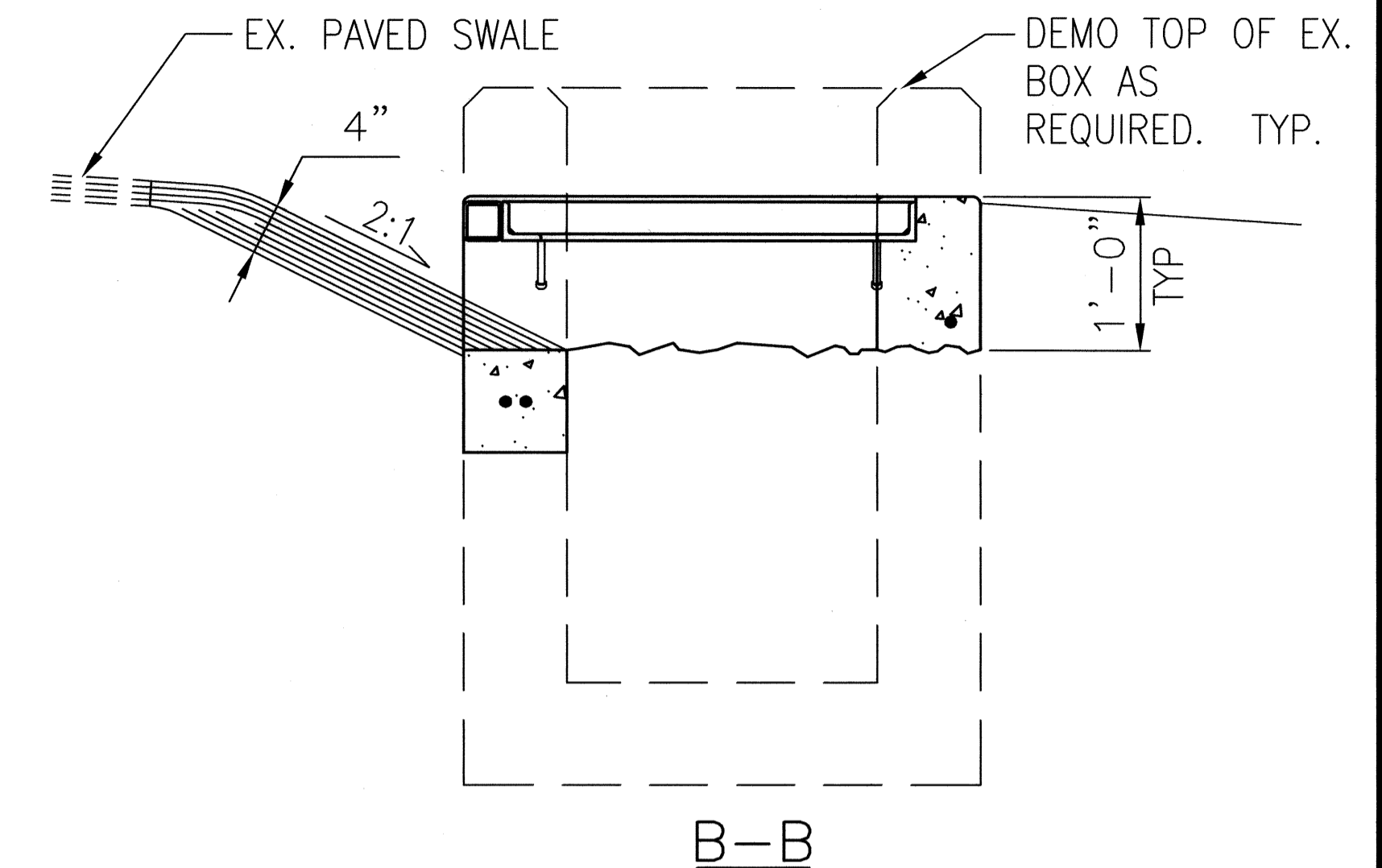
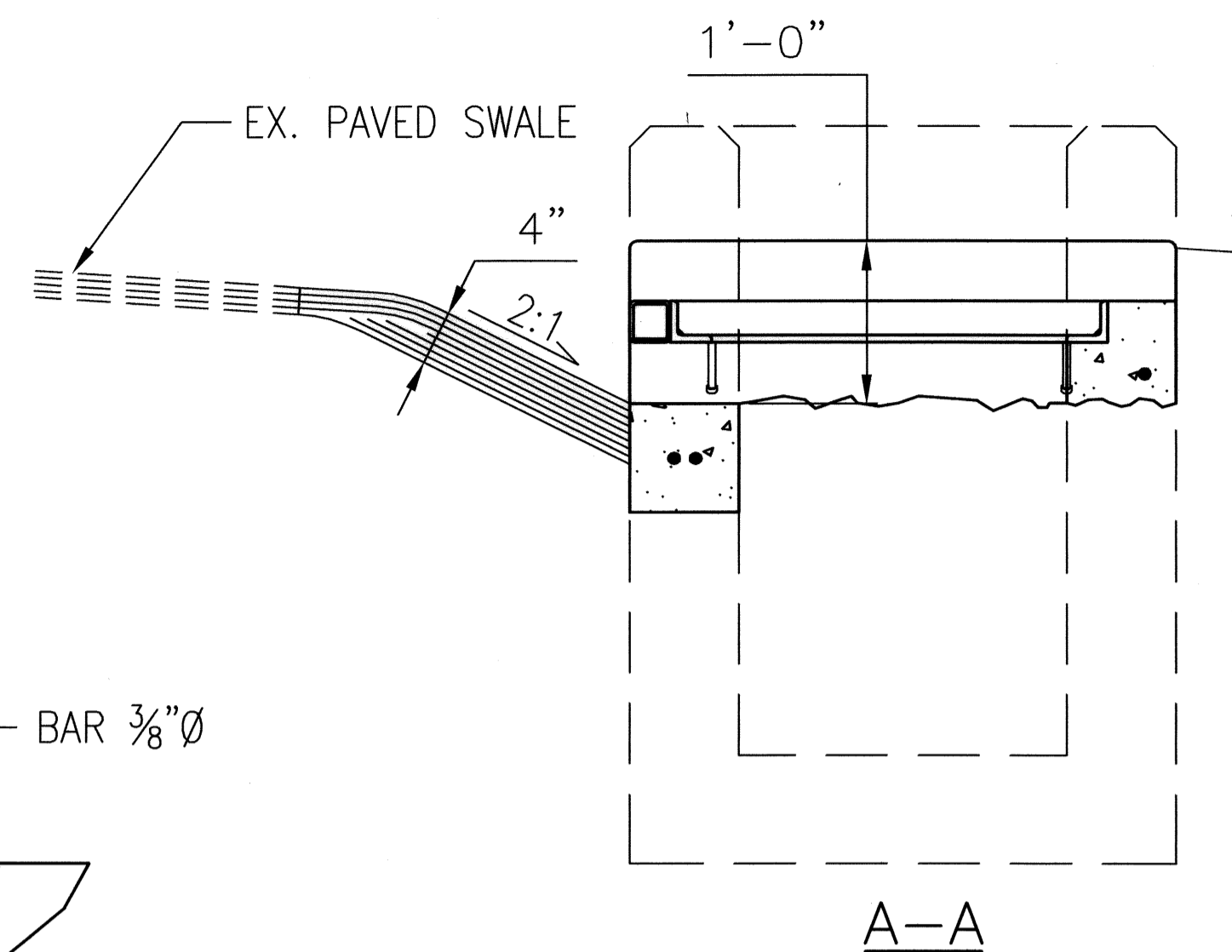
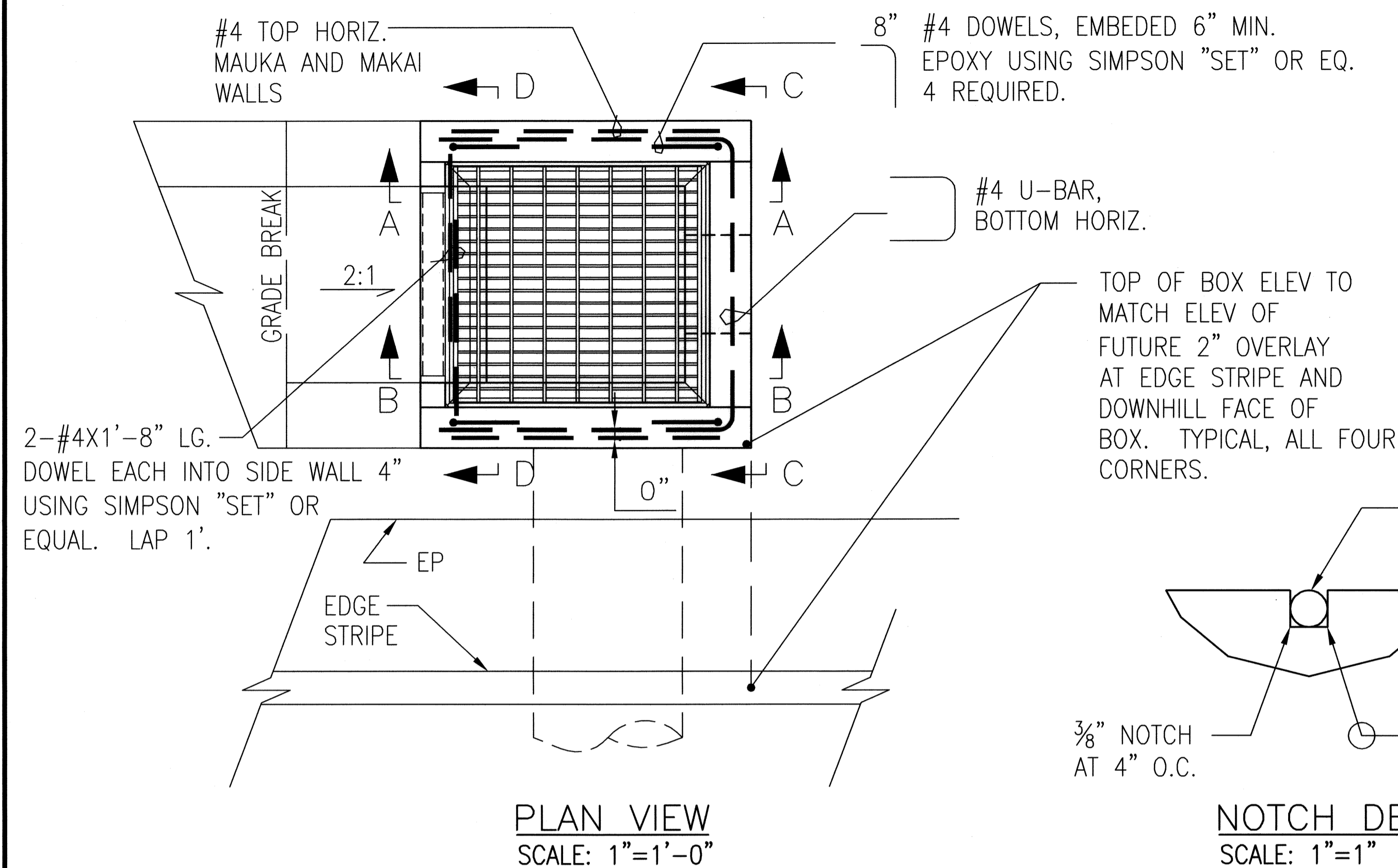
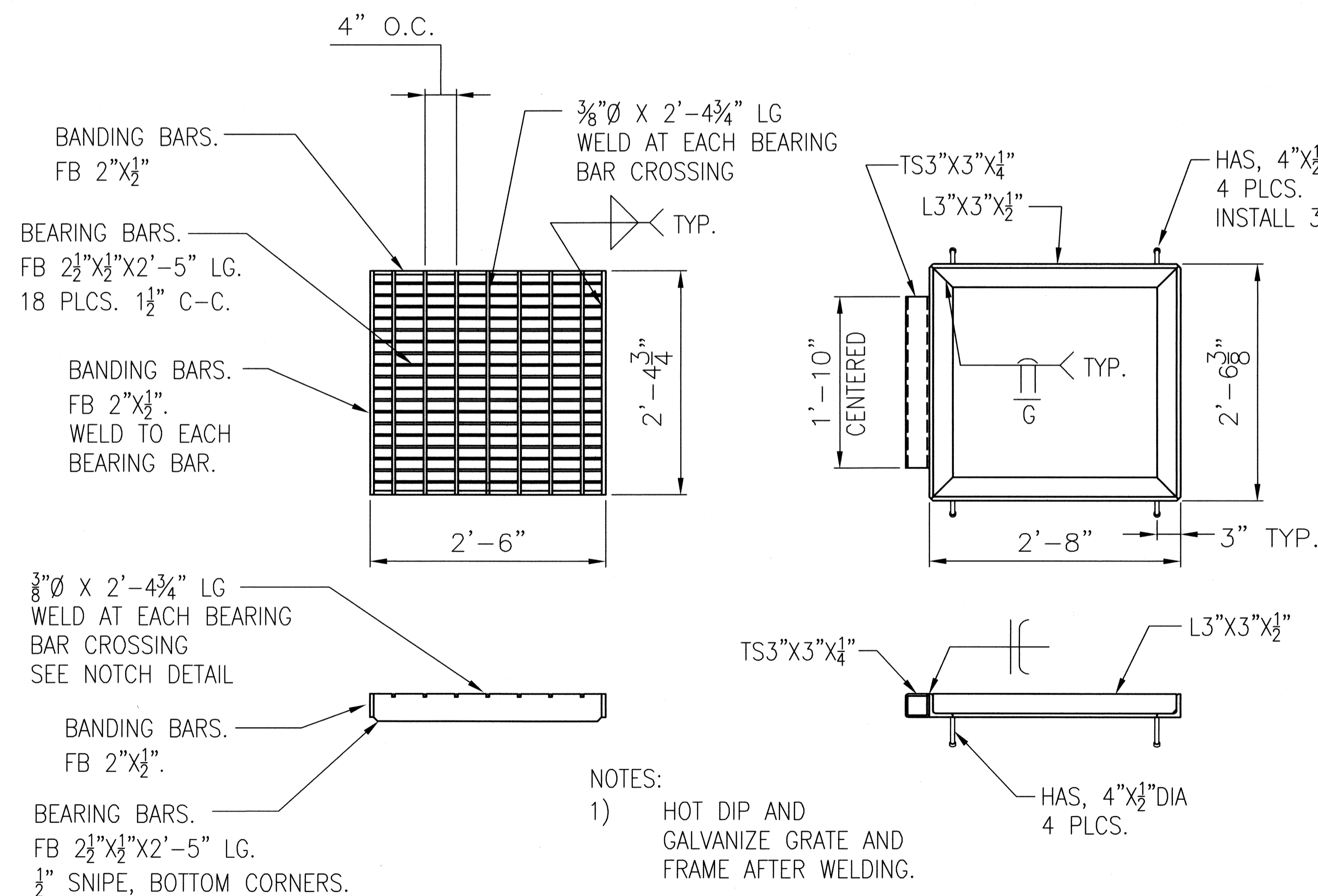


FED. ROAD DIST. NO.	STATE	PROJ. NO.	FISCAL YEAR	SHEET NO.	TOTAL SHEETS
HAWAII	HAW.	250A-01-06M	2009	46	55

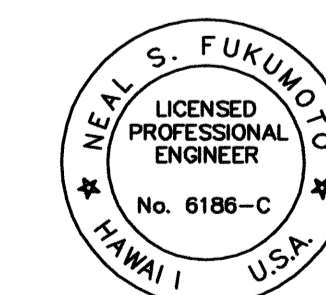


SECTIONS
SCALE: 1"=1'-0"



DRAIN INLET NOTES:

- ALL CONCRETE AND REINFORCED CONCRETE WORK SHALL BE DONE IN ACCORDANCE WITH THE APPLICABLE PROVISIONS OF THE "STANDARD SPECIFICATIONS FOR ROAD, BRIDGE, AND PUBLIC WORKS CONSTRUCTION, DTD 2005".
- CONCRETE SHALL BE PER SECTION 601, CLASS A.
- REINFORCING STEEL SHALL BE DEFORMED, CONFORMING TO SECTION 602.
- MINIMUM OF 3 DAYS SET TIME BEFORE REMOVAL OF FORMS. CONCRETE SHALL BE KEPT IN MOIST CONDITION FOR AT LEAST THE FIRST 3 DAYS. AFTER REMOVAL OF THE FORMS, ALL CONCRETE SURFACES SHALL BE INSPECTED FOR VOIDS, STONE POCKETS OR OTHER SUCH CONDITIONS, AND SUCH IMPERFECTIONS SHALL BE PATCHED IMMEDIATELY.



This work was prepared by me or under my supervision.
Exp. 04-30-10
Wesley R. Segawa & Associates, Inc.

STATE OF HAWAII
DEPARTMENT OF TRANSPORTATION
HIGHWAYS DIVISION
DRAIN INLET
RECONSTRUCTION DETAILS
KOHALA MOUNTAIN ROAD PAVEMENT REPAIRS
Waiaka Junction toward Hawi
Project No. 250A-01-06M
Date: April 2009

SHEET No. OF SHEETS