

STATE	FISCAL YEAR	SHEET NO.	TOTAL SHEETS
HAW.	1970	4	69

Sta. 181+50 to 183+50  
Construct smooth and easy riding connection to existing pavement.

Est. Quantities  
Pavt. Area = 533 S.Y.  
B.C. Area = 800 S.Y.  
Select Material = 402 tons

Sta. 198+20.12 to 198+87.88  
Construct Waipunahe Stream Bridge.  
For details, see Sht. Nos. 34 to 36.

E Curve Data  
Δ = 7° 30'  
Δ/2 = 3° 45'  
D = 1° 00'  
R = 5729.58'  
T = 375.54'  
Lc = 750.00'  
Cc = 749.46'  
Ec = 12.29'  
SE = 0.023'/ft.

DELETED

Access Permitted (Left side only)

R/W & Control of Access Line

Sta. 191+44

Construct Tractor Crossing, 50'x12'  
For Details See Sht. No. 3.

#### GENERAL NOTES

1. Azimuths and Coordinates are referred to KUILLEA, USC&GS 1952 Datum.
2. Install E Monuments as shown on the plans and as staked out by the Engineer.
3. Install Project Informational Signs at the beginning and end of project as directed by the Engineer. For Details, see Sheet No. 19.
4. Where the existing water lines are disturbed by the new construction, they shall be relocated and/or lowered as shown on the plans or as directed by the Engineer.
5. All Utility Poles to be relocated by others.
6. All Corrugated Metal Pipes shall be Bituminous Coated.
7. For Driveway and Sideroad Approaches see Table on Sheet No. 2.

BEG. OF PROJ. 240A-01-67

Sta. 183+50

Sta. 204+10

Install 120 Lin. Ft. of 84" Pipe Culvert. Install 2-CRM Structure.  
For details see Sheet No. 20.

Sta. 209+25

Construct Tractor Crossing, 48'x12'. For Details See Sht. No. 3.

Sta. 210+29  
Install 120 Lin. Ft. of 60" Dia. Galv. Cor. Metal Pipe Culvert, 10 Ga. Install 2-CRM Structure. For Detail See Sht. No. 21.

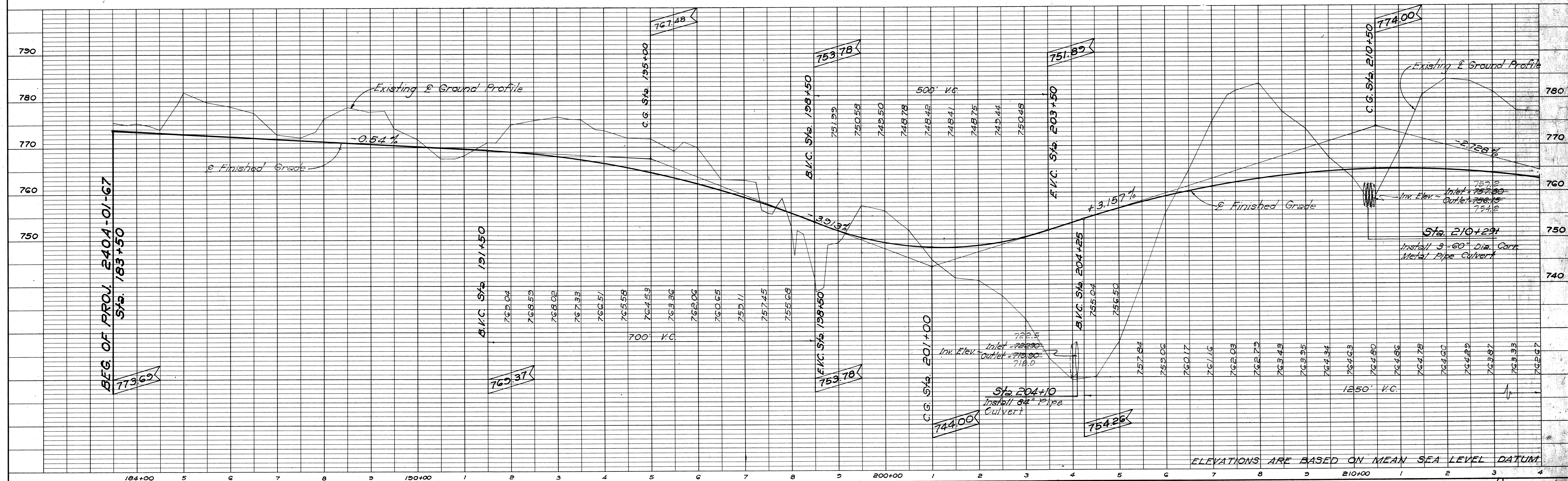
NOTE: For Guard Rail Schedule, See Sht. No. 3.

Regulatory and Warning Sign with Post

Sta. 172+75 Right, R2-5  
Sta. 176+00 Right, R2-1(35)  
Sta. 179+00 Right, W1-4R

Regulatory and Warning Sign

Sta. 172+75 Right, W13-1(35)



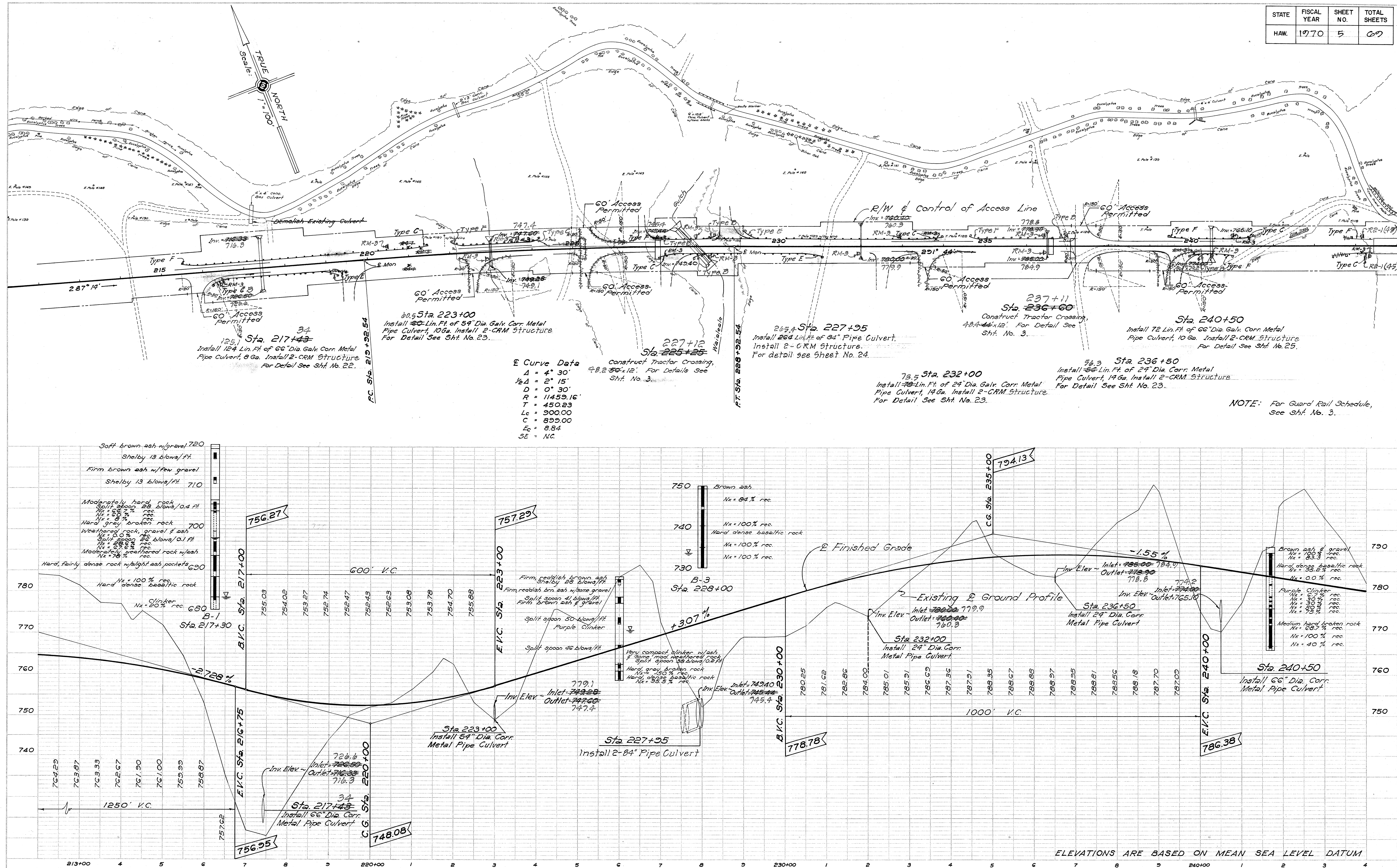
ELEVATIONS ARE BASED ON MEAN SEA LEVEL DATUM



STATE	FISCAL YEAR	SHEET NO.	TOTAL SHEETS
HAW.	1970	5	67

PLAN  
NOTES  
1. ALL WORK SHALL BE IN ACCORDANCE WITH THE STANDARD SPECIFICATIONS FOR HIGHWAY CONSTRUCTION, EDITION 1967, AS AMENDED.  
2. THE CONTRACTOR SHALL BE RESPONSIBLE FOR OBTAINING ALL NECESSARY PERMITS AND RIGHTS-OF-WAY.  
3. THE CONTRACTOR SHALL MAINTAIN ACCESS TO ALL ADJACENT PROPERTIES AT ALL TIMES.

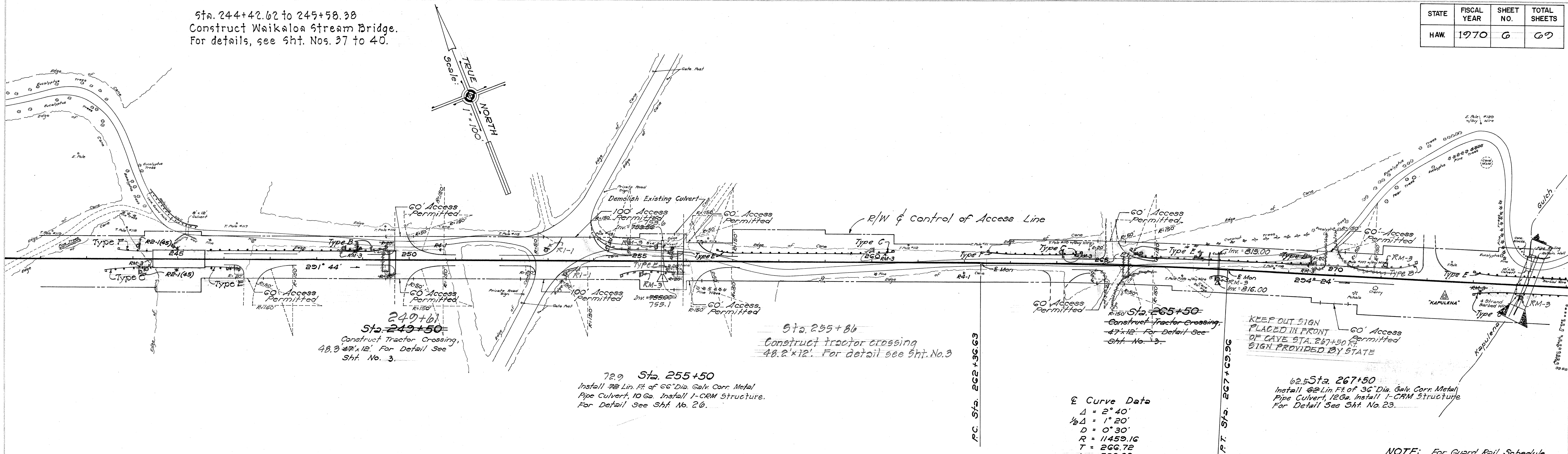
PROFILE  
NOTES  
1. ALL ELEVATIONS ARE BASED ON MEAN SEA LEVEL DATUM.  
2. THE CONTRACTOR SHALL MAINTAIN ACCESS TO ALL ADJACENT PROPERTIES AT ALL TIMES.  
3. THE CONTRACTOR SHALL BE RESPONSIBLE FOR OBTAINING ALL NECESSARY PERMITS AND RIGHTS-OF-WAY.





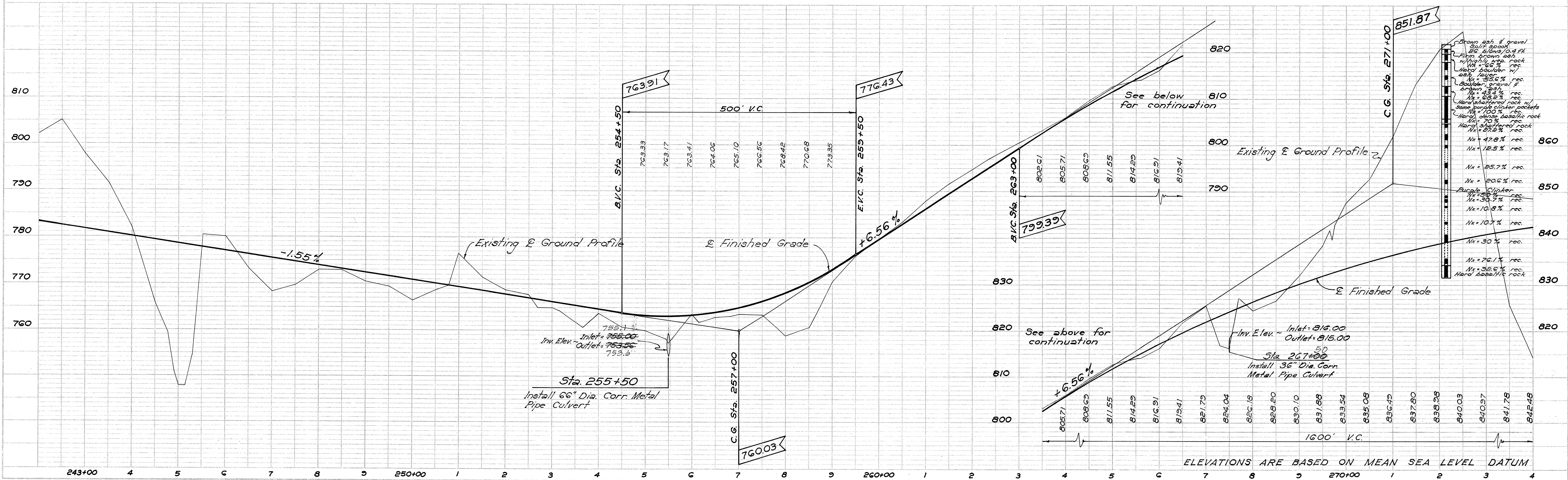
Sta. 244+42.62 to 245+58.38  
Construct Waikaloa Stream Bridge.  
For details, see Sht. Nos. 37 to 40.

STATE	FISCAL YEAR	SHEET NO.	TOTAL SHEETS
HAW.	1970	6	67



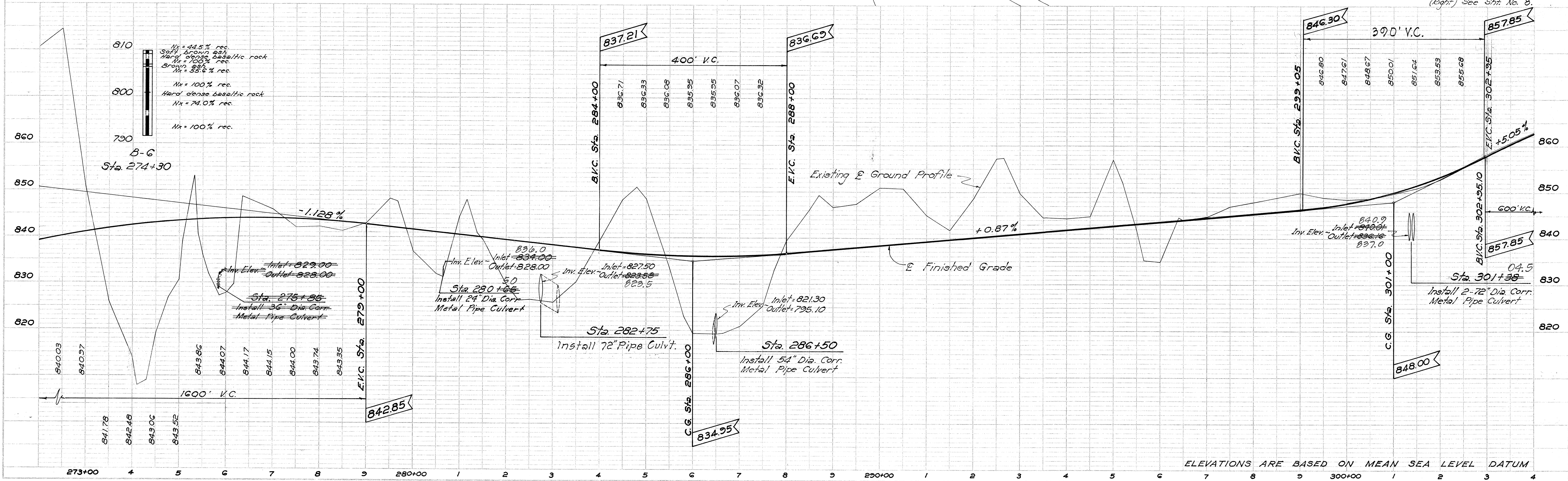
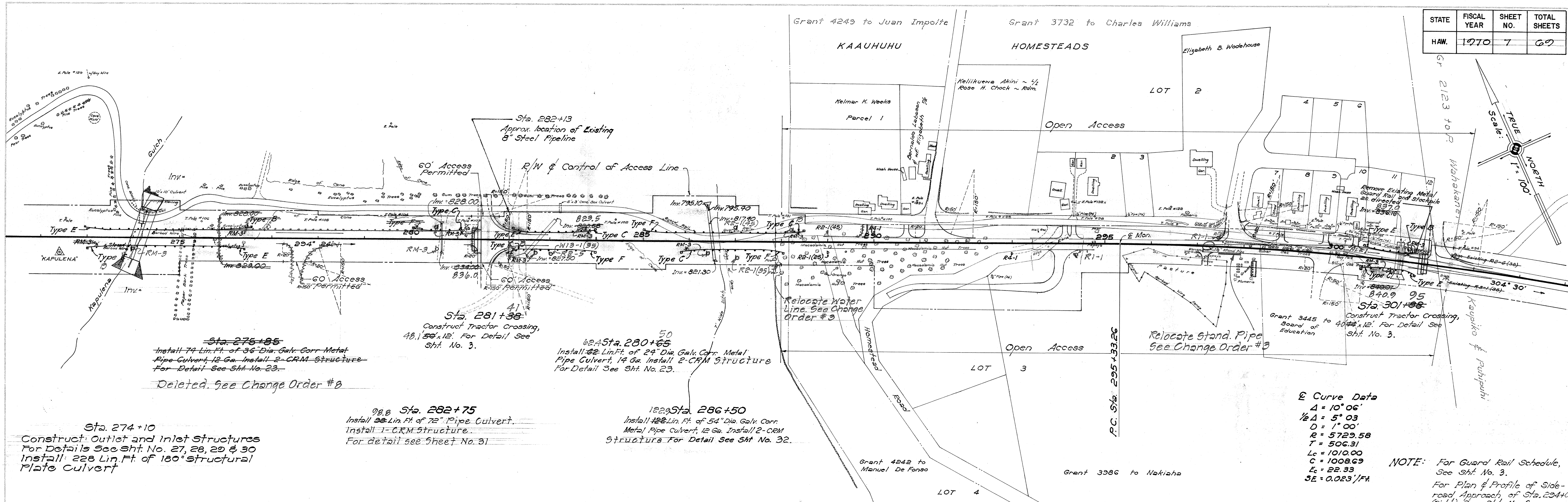
Curve Data  
 $\Delta = 2^\circ 40'$   
 $\frac{1}{2}\Delta = 1^\circ 20'$   
 $D = 0^\circ 30'$   
 $R = 11459.16$   
 $T = 266.72$   
 $L_c = 533.33$   
 $C = 533.23$   
 $E_c = 310$   
 $SE = NC$

NOTE: For Guard Rail Schedule, See Sht. No. 3.  
Relocation of "KAPULENA" Trig. Sta. by others.





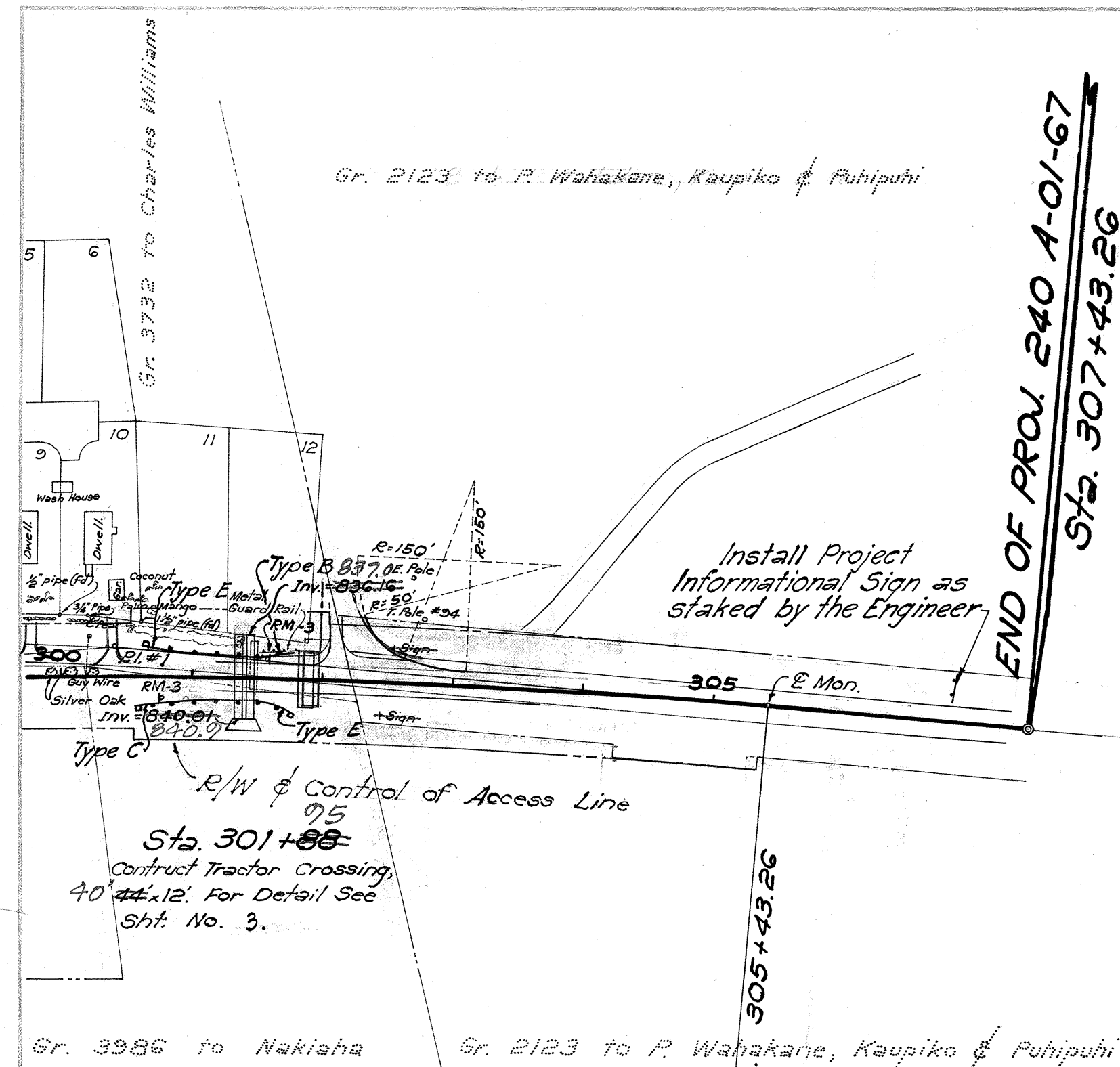
STATE	FISCAL YEAR	SHEET NO.	TOTAL SHEETS
HAW.	1970	7	69



ELEVATIONS ARE BASED ON MEAN SEA LEVEL DATUM

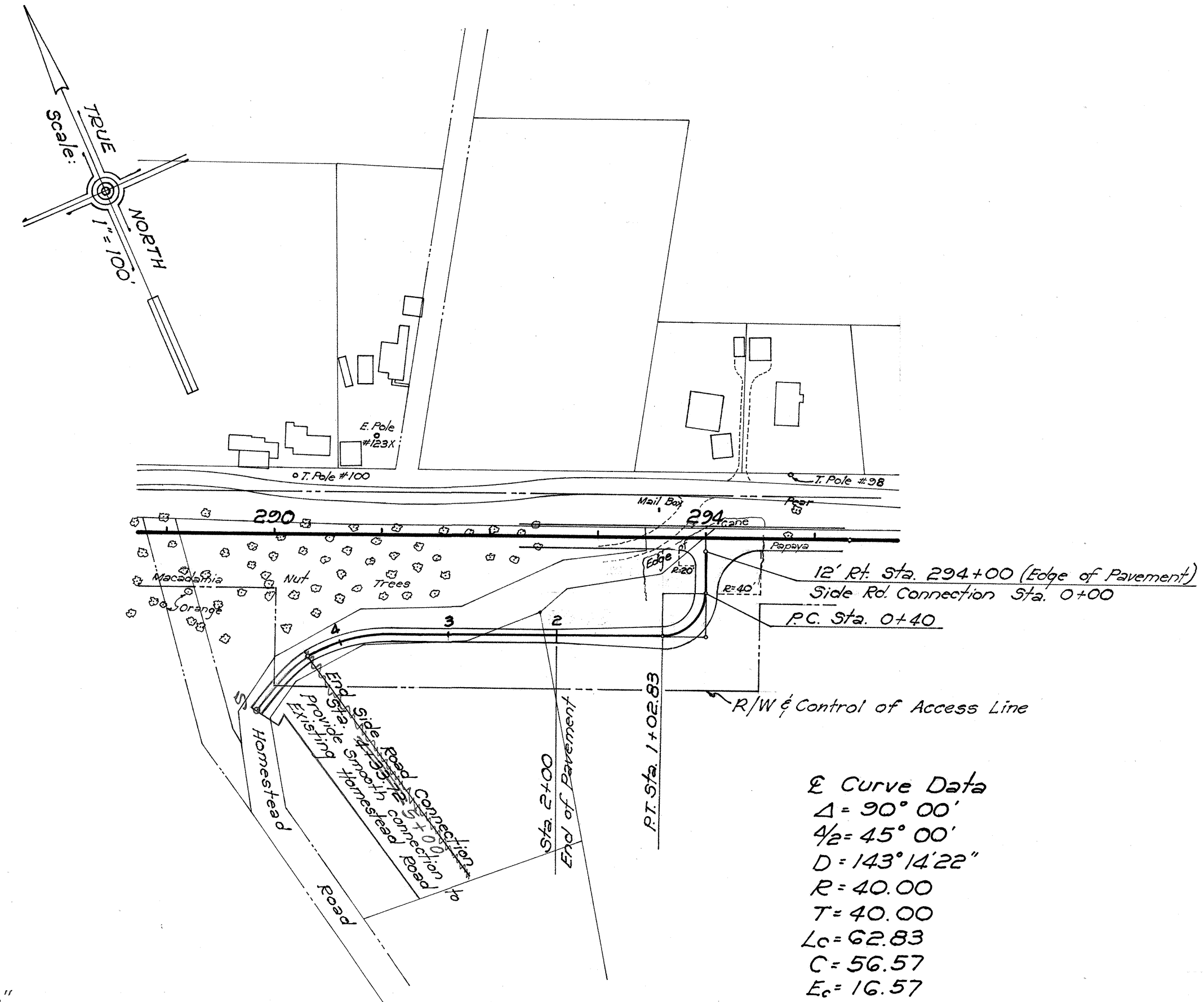


STATE	FISCAL YEAR	SHEET NO.	TOTAL SHEETS
HAW.	1970	8	69



A hand-drawn compass rose with 'NORTH' and 'TRUE' labels, a scale bar, and a north arrow. The rose is oriented with 'NORTH' pointing towards the upper right. A scale bar is located below the rose, labeled 'Scale: 1" = 10.0'.

Sta. 307+43.26  
Construct smooth and easy riding  
connection to existing pavement

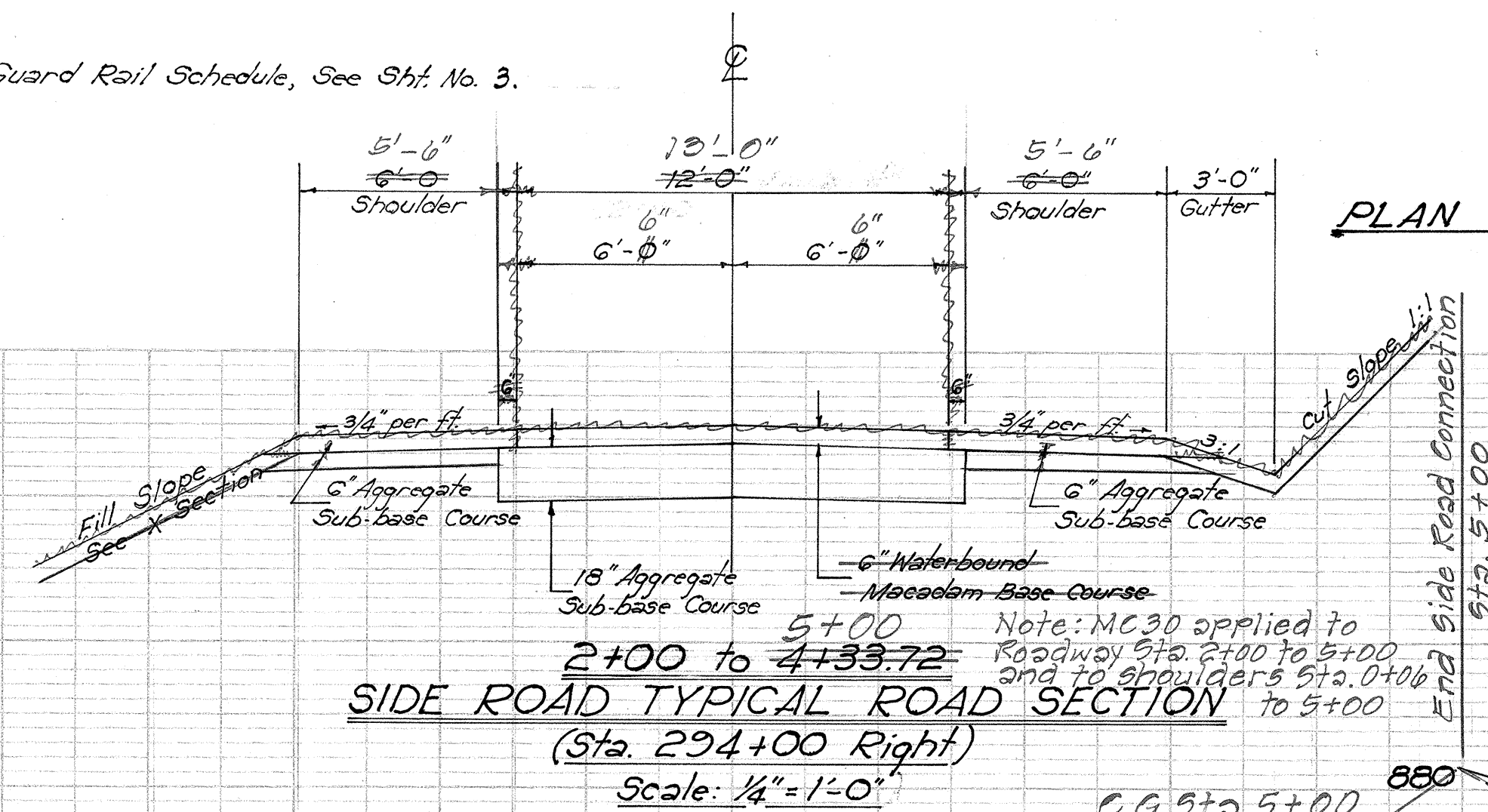


*ℰ Curve Data*  
 $\Delta = 90^\circ 00'$   
 $\frac{\Delta}{2} = 45^\circ 00'$   
 $D = 143^\circ 14' 22''$   
 $R = 40.00$   
 $T = 40.00$   
 $L_c = 62.83$   
 $C = 56.57$   
 $E_c = 16.57$

*E Curve Data*  
 $\Delta = 10^{\circ}06'$   
 $\frac{1}{2}\Delta = 5^{\circ}03'$   
 $D = 1^{\circ}00'$   
 $R = 5729.58$   
 $T = 506.31$   
 $L_c = 1010.00$   
 $C = 1008.69$   
 $E_c = 22.33$

1425 Sta. 301 + 38  
Install ~~48~~ Lin. Ft. of 72" Pipe Culvert.  
Install 1-CRM Structure.  
For detail see Sheet No. 33

NOTE: For Guard Rail Schedule, See Sht. No. 3.



PLAN OF SIDEROAD APPROACH AT  
Sta. 294+00 (R)

